

# NEW ZEALAND NOTICES TO MARINERS

## *Notices* **NZ 25 – 33**

© Crown Copyright 2015. All rights Reserved. Permission is not required to make analogue copies of these Notices but such copies are not to be sold.

---

### CONTENTS

- I [Explanatory Notes.](#)
  - II [New Zealand Notices to Mariners.](#)
  - III [Corrections to New Zealand Light List.](#)
  - IV [Corrections to Sailing Directions and New Zealand Publications.](#)
  - V [Navigational Warnings.](#)
  - VI [Corrections to Admiralty List of Radio Signals.](#)
- 

New Zealand Notices to Mariners are the authority for correcting New Zealand charts within the New Zealand area of charting responsibility as shown in [Annual Notice No. 1](#).

Mariners are requested to immediately inform New Zealand Hydrographic Authority, Land Information New Zealand, 155 The Terrace, PO Box 5501, Wellington 6145, New Zealand, Phone: 0800 665 463 or +64 (0)4 460 0110, Fax: +64 (0)4 460 0161, email: [ntm@linz.govt.nz](mailto:ntm@linz.govt.nz), of the discovery of new or suspected dangers to navigation, or shortcomings in charts and publications. A copy of a Hydrographic Note, a convenient form on which to send such information, is included at the end of Section VI of the Fortnightly Notices to Mariners.

Changes or defects in aids to navigation should be reported to the Rescue Coordination Centre New Zealand (RCCNZ) via the nearest New Zealand Coastal Maritime Radio Station Phone: +64 (0)4 577 8030, Fax: +64 (0)4 577 8038 or +64 (0)4 577 8041, email: [rccnz@maritimenz.govt.nz](mailto:rccnz@maritimenz.govt.nz).

Copies of these Notices can be obtained from Land Information New Zealand, Maritime New Zealand, Principal Chart Agents at the major ports of New Zealand and the Internet: [www.linz.govt.nz](http://www.linz.govt.nz).

## EXPLANATORY NOTES

**Charts.** The notices in Section II give instructions for the correction of charts. Geographical positions refer to the largest scale chart unless otherwise stated. They are normally given in degrees, minutes and decimals of a minute, but may occasionally quote seconds for convenience when plotting from the graduation of some older-style charts. Bearings are true reckoned clockwise from 000° to 359°; those relating to lights are given as seen by an observer from seaward. Symbols referred to are those shown in publication Chart 5011 (*INT 1*) Symbols and Abbreviations used on Admiralty Paper Charts, published by the United Kingdom Hydrographic Office.

Alterations to depth contours, deletion of depths to make way for new detail, etc. are not mentioned unless they have some navigational significance.

Block corrections or notes accompanying notices in Section II are placed after Section VI.

**Temporary and Preliminary Notices.** These are indicated by (T) or (P) after the notice number. A list of [\(T\) and \(P\) Notices in force](#) is published on the LINZ website and in the fortnightly Editions of Notices to Mariners. Charts are not corrected for them before issue; they should be corrected in pencil on receipt.

**Light Lists.** The detailed correction to the Light List is given in Section III and may not be published in the same edition as the chart correcting notice. The entire entry for each light is printed, and an asterisk (\*) is shown under the column which contains an amendment. In the case of a new light, an asterisk (\*) appears under all the columns. New and extensively altered entries are intended to be pasted in. It is recommended that a manuscript entry be made for all shorter corrections.

It is emphasized that the [List of Lights](#) is the authority for lights and that many alterations, especially those of a temporary but operational nature, may only be promulgated as corrections to the List of Lights.

**Sailing Directions.** Corrections to Sailing Directions are given in Section IV. It is recommended that such corrections be kept together in a file with the latest list of those in force on top. The file can then be consulted when using the Current Edition of the book to see if any notices affecting the area under consideration are extant. Corrections should not be pasted into the Current Edition of the book or Supplement.

**New Zealand Publications.** Corrections to New Zealand Publications are given in Section IV.

**Navigational Warnings.** NAVAREA XIV and NZ Coastal Navigational Warnings that are in force at the time of publication are given in Section V.

**Radio Signals.** When radio signals are affected by a notice the Admiralty List of Radio Signals reference number is quoted. The detailed correction to the List of Radio Signals is given in Section VI and may be published in a later edition than the chart correcting notice. It is recommended that such corrections be kept together in a file with the latest list of those in force on top. Corrections should not be pasted into the Current Edition of the book.

**Correction of Charts and Publications by the User.** New Zealand Notices to Mariners contain important information and should be used to keep the specified charts and books up to date.

## THE USE OF CHARTS AND ASSOCIATED PUBLICATIONS

**Reliance on Charts and Associated Publications.** While every effort is made to ensure the accuracy of the information on New Zealand charts and other publications, it should be appreciated that it may not always be complete and up to date. The mariner must be the final judge of the reliance to be placed on the information given, bearing in mind their particular circumstances, local pilotage guidance and the judicious use of available navigational aids.

**Charts.** Charts should be used with prudence: there are areas where the source data are old, incomplete or of poor quality. The mariner should use the largest scale appropriate for his particular purpose; apart from being the most detailed, the larger scales are usually corrected first. When extensive new information (such as a new hydrographic survey) is received, some months may elapse before it can be fully incorporated in published charts. On small scale charts of ocean areas where hydrographic information is, in many cases, still sparse, charted shoals may be in error as regards position, least depth and extent. Undiscovered dangers may exist, particularly away from well-established routes.

**Further guidance.** The Mariner's Handbook (NP 100) gives a fuller explanation of the limitations of charts. All users should study it in their own interest.

**ENC/ECDIS Data Presentation and Performance Check in Ships.** The International Maritime Organization (IMO) has recently indicated its concerns about operating anomalies identified in some ECDIS that fail to display important new chart features.

The International Hydrographic Organization (IHO) has produced an ENC Data Presentation and Performance Check dataset that allows mariners to check their ECDIS. The check dataset is available through ENC service providers and from the IHO website ([www.iho.int](http://www.iho.int)) which includes instructions.

Mariners are strongly recommended to use the dataset and report the results of their checks to help the IHO identify how the different brands of ECDIS display and handle chart information. Mariners are asked to also inform the IMO, national Hydrographic Offices, ECDIS manufacturers and others, so that they can take any corrective action that may be necessary.

In order to present the most comprehensive report possible to the IMO and to further assist in resolving the issues so far identified, the IHO is keen that as many ships as possible forward their results. Reports on the results can be sent via a form provided with the data or the results can be submitted on-line through a web-form.

All relevant documentation can be downloaded free from the IHO website at: [www.iho.int](http://www.iho.int).

II

**NUMERICAL INDEX OF CHARTS AFFECTED**  
*(NZ NTM Edition No. 2 dated 23 January 2015)*

NZ Chart No.	INT Chart No.	ENC No.	Notice to Mariners
NZ 21	INT 641	NZ200021	28(T)
NZ 23	INT 640	NZ300023	28(T), 32(T)
NZ 25	INT 648		32(T)
NZ 25	INT 648	NZ200025	30(T)
NZ 41		NZ300041	28(T)
NZ 42		NZ300042	28(T)
NZ 43		NZ300043	28(T)
NZ 45			32(T)
NZ 48			32(T)
NZ 63		NZ300063	33(T)
NZ 64		NZ300064	30(T)
NZ 82 (T 82)		NZ300082	31(T)
NZ 443		NZ300443	28(T), 32(T)
NZ 632		NZ400632	29(T), 33(T)
NZ 4111			28(T)
NZ 5321			26
NZ 5324			26
NZ 6321		NZ506321	29(T), 33(T)
NZ 14061	INT 61		28(T)
NZ 14600	INT 600	NZ14600E	28(T), 30(T)
NZ 14601	INT 601		28(T), 30(T)
NZ 14602	INT 602		28(T)
NZ 14605	INT 605		28(T)
NZ 14605	INT 605	NZ14605W	31(T)
NZ 14631	INT 631	NZ214631	31(T)
NZ 14638	INT 638		31(T)
		NZ404424	25
		NZ606321	29(T)

II

**NEW ZEALAND TEMPORARY AND PRELIMINARY NOTICES IN FORCE**

(NZ NTM Edition No. 2 dated 23 January 2015)

NZ Notice	T/P	Charts Affected	Locality and Subject
		NZ Chart, ENC Cell	
194/04	P	<b>NZ 46, NZ 48, NZ 61, NZ 463, NZ 614, NZ 6151, NZ 6152, NZ 6153, NZ 6154</b>	Marlborough Sounds: Use of Automated Navigation Systems
242/09	P	<b>NZ 42, NZ 4265</b>	Kaipara Hr. Entrance: Depths
222/10	P	<b>NZ 542</b>	Whakatane: Depths
20/11	P	<b>NZ 5411, NZ5412, NZ405411, NZ505412</b>	Tauranga Hr.: Lights
202/11	P	<b>NZ 6142, NZ606142</b>	Port Nelson: Light, Beacon, Works in Progress
211/12	P	<b>NZ 61, NZ 614, NZ300061, NZ300614, NZ506141</b>	North Coast, Golden Bay & Tasman Bay: Lights
85/13	P	<b>NZ 541, NZ 5411, NZ 5412, NZ 5413, NZ300541, NZ405411, NZ505412</b>	East Coast, Tauranga, Port of Tauranga: Works
140/13	P	<b>NZ 5314</b>	East Coast, Mercury Islands, Rocky Bay, Coralie Bay, Orauaki Point, Te Whanga Bay, Korapuki Islands: Rocks
147/13	P	<b>NZ 521, NZ300521</b>	East Coast, Poor Knights Islands: Depths
156/13	P	<b>NZ 541, NZ 5413, NZ300541, NZ405413</b>	East Coast, Tauranga, Motiti Island: Depths
169/13	P	<b>NZ 5411, NZ405411</b>	East Coast, Tauranga Harbour, Katikati Entrance: Buoy
172/13	P	<b>NZ 6152</b>	North Coast, Havelock: Lights, Beacons
194/13	P	<b>NZ 5124</b>	East Coast, Bay of Islands, Kerikeri Inlet: Light Beacons
220/13	T	<b>NZ 5612, NZ505612, NZ605612</b>	East Coast, Napier Inner Harbour and Approaches: Dredging
221/13	P	<b>NZ 4265</b>	West Coast, Kaipara Harbour: Lights, Beacons, Buoys
242/13	T	<b>NZ 53, NZ 532, NZ 5321, NZ 5324, NZ305322, NZ405321</b>	East Coast, Auckland, Rakino Island: Light Unlit
41/14	P	<b>NZ 268</b>	Chatham Islands: Depths and Rocks
42/14	P	<b>NZ 26, NZ 27, NZ 268</b>	Chatham Islands: Areas to be avoided
45/14	P	<b>NZ 632, NZ 6324, NZ406324</b>	East Coast, Akaroa Harbour: Area of Restricted Access
94/14	T	<b>NZ 6142, NZ406142, NZ606142</b>	North Coast, Nelson: Light, Beacon
132/14	T	<b>NZ 6321, NZ506321, NZ606321</b>	East Coast, Lyttelton Harbour: Light, Beacon
138/14	T	<b>NZ 23 (INT 640), NZ 26, NZ 55, NZ 56, NZ 14600 (INT 600), NZ200023, NZ300055, NZ300056, NZ14600E</b>	East Coast, Poverty Bay, Eastwards: Scientific Instruments
139/14	P	<b>NZ 5612</b>	East Coast, Approaches to Napier: Light Sectors
140/14	T	<b>NZ 23 (INT 640), NZ 26, NZ 58, NZ 14600 (INT 600), NZ200023, NZ300058, NZ14600E</b>	East Coast, Honeycomb Southeastwards: Scientific Instruments
141/14	T	<b>NZ 23 (INT 640), NZ 25 (INT 648), NZ 45, NZ 48, NZ200023, NZ300045</b>	West Coast, South Taranaki Bight: Seabed Obstructions
156/14	P	<b>NZ 82 (T 82), NZ 8238 (T 8238), NZ 8247 (T 8247), NZ 8248 (T 8248), NZ8259 (T 8259), NZ300082, NZ508238, NZ608238</b>	Kingdom of Tonga, Ha'apai Group: Navigation Aids
171/14	P	<b>NZ 521, NZ300521</b>	East Coast, Whangarei Harbour: Directional light
196/14	T	<b>NZ 5571, NZ405571, NZ505571</b>	East Coast, Poverty Bay, Gisborne: Scientific Instruments
210/14	P	<b>NZ 8215, NZ508215</b>	Kingdom of Tonga, Niuaotupapu: Navigation Aids
211/14	P	<b>NZ 82 (T 82), NZ 827 (T 827), NZ 8275 (T 8275), NZ 8277 (T 8277), NZ300827, NZ408275, NZ508277</b>	Kingdom of Tonga, Tongatapu: Navigation Aids
213/14	T	<b>NZ 8655, NZ508655</b>	Samoa, Approaches to Apia Harbour: Buoys
218/14	T	<b>NZ 4315, NZ504315, NZ604315</b>	West Coast, Onehunga Wharf: Berth Depths
224/14	P	<b>NZ 6422, NZ406422, NZ506422</b>	East Coast, Timaru Harbour: Works, Exclusion Zone and Buoy
238/14	P	<b>NZ 822 (T 822), NZ 8225 (T 8225), NZ400822, NZ508225</b>	Kingdom of Tonga, Vava'u Group, Neiafu Harbour: Prohibited Area
239/14	T	<b>NZ 521, NZ5215, NZ300521, NZ505215</b>	East Coast, Whangarei Harbour: Works
243/14	P	<b>NZ 5113</b>	East Coast, Houhora & Rangaunu Harbour: Aids to Navigation
244/14	P	<b>NZ 5315</b>	East Coast, Mercury Bay: Depths, Rocks
245/14	P	<b>NZ 531, NZ 534, NZ 5318, NZ300531</b>	East Coast, Mercury Islands, Mercury Bay: Depths, Rocks
246/14	T	<b>NZ 61, NZ 614, NZ 6144, NZ300614, NZ406144</b>	North Coast, Tasman Bay and Golden Bay: Spat Catching Areas
249/14	T	<b>NZ 5321, NZ 5322, NZ405321, NZ505322</b>	East Coast, Auckland Harbour, Takapuna Beach: Research Buoy
251/14	T	<b>NZ 54, NZ 541, NZ 542, NZ 5413, NZ300541, NZ405413</b>	East Coast, Tauranga, Astrolabe Reef: Exclusion Zone and Waverider Buoy
256/14	T	<b>NZ 14638 (INT 638)</b>	Fiji, Vitu Levu, Vanua Levu & Southern Lau Group: Lights
261/14	T	<b>NZ 522, NZ 532, NZ 5227, NZ305322</b>	East Coast, Kawau Bay, Matakana River: Works

II

NZ Notice	T/P	Charts Affected	Locality and Subject
		NZ Chart, ENC Cell	
262/14	T	<b>NZ 23 (INT 640), NZ 25 (INT 648), NZ 45, NZ 48, NZ200023, NZ300045</b>	in Progress West Coast, South Taranaki Bight: Drilling Operations
263/14	P	<b>NZ 62, NZ 63, NZ 6212, NZ300062, NZ462122</b>	East Coast, Kaikoura: Marine Reserve
264/14	P	<b>NZ 63, NZ 64, NZ 632, NZ 6324, NZ300063, NZ406324</b>	East Coast, Banks Peninsula, Akaroa Harbour: Marine Reserve
265/14	T	<b>NZ 7142, NZ407142, NZ507142</b>	West Coast, Greymouth Harbour: Depths
266/14	T	<b>NZ 6142, NZ606142</b>	North Coast, Port Nelson: Light, Beacon
270/14	P	<b>NZ 561, NZ 5612, NZ400561, NZ505612</b>	East Coast, Whirinaki Eastwards: Buoy
271/14	P	<b>NZ 46, NZ 463, NZ300463</b>	South Coast, Wellington: Rock, Wreck
273/14	P	<b>NZ 46, NZ 463, NZ300463</b>	South Coast, Pencarrow Head: Light
274/14	T	<b>NZ 4314, NZ404314</b>	West Coast, Manukau Harbour Entrance: Depths
275/14	P	<b>NZ 8655, NZ508655</b>	Samoa, Apia Harbour: Buoys and Breakwater
22/15	P	<b>NZ 45, NZ 48, NZ300045</b>	West Coast, Cape Egmont Westwards: Protected Area
23/15	T	<b>NZ 21 (INT 641), NZ 23 (INT 640), NZ 25 (INT 648), NZ 43, NZ 48, NZ 14060 (INT 60), NZ 14061 (INT 61), NZ 14600 (INT 600), NZ 14601 (INT 601), NZ14600E, NZ200023, NZ300043</b>	West Coast, North Taranaki Bight Westwards: Seismic Survey
24/15	P	<b>NZ 82 (T 82), NZ 822 (T 822), NZ 8225 (T 8225), NZ300082, NZ400822, NZ508225</b>	Kingdom of Tonga, Vava'u Group: Navigation Aids
27/15	T		Maritime Safety Broadcasts
28/15	T	<b>NZ 21 (INT 641), NZ 23 (INT 640), NZ 41, NZ 42, NZ 43, NZ 443, NZ 4111, NZ 14061 (INT 61), NZ 14600 (INT 600), NZ 14601 (INT 601), NZ 14602 (INT 602), NZ 14605 (INT 605), NZ14600E, NZ200021, NZ300023, NZ300041, NZ300042, NZ300043, NZ300443</b>	West Coast: Seismic Survey
29/15	T	<b>NZ 632, NZ 6321, NZ400632, NZ506321, NZ606321</b>	East Coast, Lyttelton Harbour, Sticking Point Eastwards: Exclusion Zone
30/15	T	<b>NZ 25 (INT 648), NZ 64, NZ 14600 (INT 600), NZ 14601 (INT 601), NZ14600E, NZ200025, NZ300064</b>	East Coast, Otago Peninsula Eastwards: Seismic Survey
31/15	T	<b>NZ 82 (T 82), NZ 14605 (INT 605), NZ 14631 (INT 631), NZ 14638 (INT 638), NZ14605W, NZ214631, NZ300082</b>	Kingdom of Tonga, Hunga Ha'apai Southeastwards: Volcanic Activity.

**NZ 25/15 NEW ZEALAND PUBLICATIONS – Electronic Navigational Charts.**

**New ENC to be Published Shortly**

*ENC Cell*      *Title*

**NZ404424**      NZ404424 - NZ4424 - North Island - West Coast - Taharoa Offshore Terminal

New Zealand Hydrographic Authority  
NI 19/2015

**NZ 26/15 NEW ZEALAND – North Island – East Coast – Auckland – Rangitoto Island – Islington Bay – Lit Mooring Buoy.**

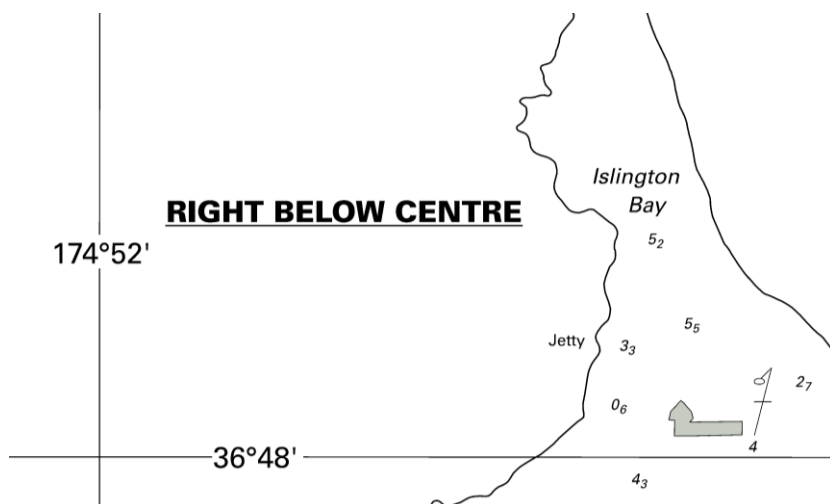
**Chart NZ 5321 [ 242/14 ]**

Delete  *Fl.R.2s* 36° 47'.89S., 174° 54'.07E.  
*R*

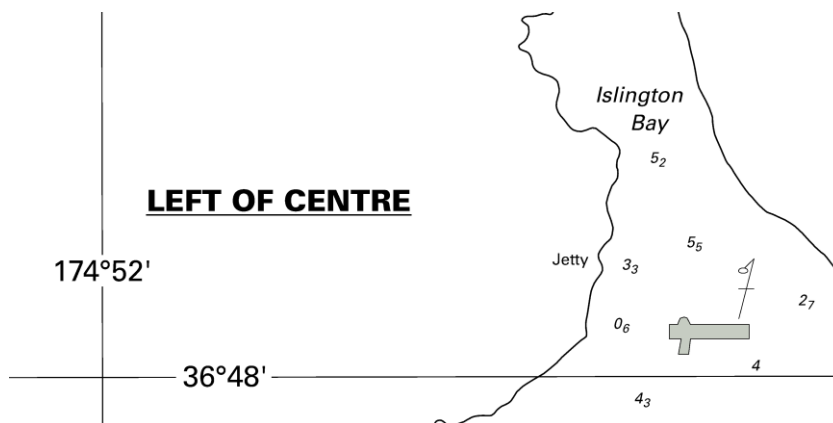
**Chart NZ 5324 [ 169/14 ]**

Delete  *Fl.R.2s* 36° 47'.89S., 174° 54'.07E.  
*R*

Coastguard Northern Region  
NI 8/2015



<i>Issued as a guide to chart correction.</i>		<i>Use in conjunction with the appropriate NZ Notice to Mariners.</i>	
<b>LAST CORRECTION</b>	<b>NZ NTM No.</b>	<b>CHART No.</b>	
<b>NZ 242/14</b>	<b>NZ 26/15</b>	<b>NZ 5321</b>	



<i>Issued as a guide to chart correction.</i>		<i>Use in conjunction with the appropriate NZ Notice to Mariners.</i>	
<b>LAST CORRECTION</b>	<b>NZ NTM No.</b>	<b>CHART No.</b>	
<b>NZ 169/14</b>	<b>NZ 26/15</b>	<b>NZ 5324</b>	



**NZ 27(T)/15 SOUTH PACIFIC OCEAN – Maritime Safety Broadcasts.**

*Former notice – NZ 232(T)/14 is cancelled.*

Optimum R/T frequencies within NAVAREA XIV

The accompanying diagrams show the optimum R/T calling and working frequency bands and times for navigational warnings broadcast within 1000 nautical miles of Taupo Maritime Radio (ZLM) (38° 50'S., 176° 00'E. approx.) for the period February to April 2015.

Australian Government IPS Radio and Space Services  
NI 9/2015

**NZ 28(T)/15 NEW ZEALAND – North Island – West Coast – Seismic Survey.**

*Former notice* – NZ 234(T)/14 is cancelled.

- \* 1. MV *Aquila Explorer* (call sign H3JN) is undertaking seismic survey activities in the area bounded by the coordinates given in paragraph 5.2 below until April 2015.
- \* 2. MV *Aquila Explorer* is deploying one streamer; 5.7NM long marked by a lit tailbuoy *F1* and is restricted in its ability to manoeuvre. All vessels are requested to pass at least 6NM from the vessel and towed equipment.
- \* 3. Support vessel MV *Ocean Pioneer* (call sign ZM2582) is in attendance.
- \* 4. All vessels are maintaining a listening watch on VHF channels 16 & 69.

***Non-interference Zone***

- \* 5. Pursuant to section 101B of the Crown Minerals Act 1991, the Chief Executive of the Ministry of Business, Innovation and Employment hereby gives notice of a non-interference zone in relation to the MV *Aquila Explorer* in Petroleum Prospecting Permit PEP 56377.
- \* 5.1 The non-interference zone relates to the following activities:
  - a) Acquiring seismic data within the permit,
  - b) Turning the ship (including turning outside the permit area),
  - c) Refueling by a support ship that occurs within the area given in 5.2, and
  - d) Repairs to the equipment by a support ship that occurs within the area given in 5.2.
- 5.2 The locality of the activities is bounded by the following positions:
  - a) 33° 30'.00S., 168° 10'.00E.
  - b) 33° 30'.00S., 171° 50'.00E.
  - c) 35° 02'.00S., 172° 38'.00E.
  - d) 37° 27'.00S., 174° 22'.00E.
  - e) 37° 48'.00S., 174° 22'.00E.
  - f) 38° 27'.00S., 174° 02'.00E.
  - g) 38° 30'.00S., 168° 10'.00E.
- 5.3 The area of the non-interference zone is 500m from any point on the outer edge of the MV *Aquila Explorer* and from any point on the outer edge of the equipment attached to the MV *Aquila Explorer* that is involved with any activity as set out above.
- \* 5.4 This notice has effect from 23 January 2015 to 22 April 2015 (both days inclusive).
- \* 5.5 Refer to Annual New Zealand Notices to Mariners, No.16A, which can be found in the New Zealand Nautical Almanac (NZ 204) and on the LINZ website [www.linz.govt.nz](http://www.linz.govt.nz).

\* *Indicates new or revised entry*

**Charts temporarily affected: NZ 21 (INT 641), NZ 23 (INT 640), NZ 41, NZ 42, NZ 43, NZ 443, NZ 4111, NZ 14061 (INT 61), NZ 14600 (INT 600), NZ 14601 (INT 601), NZ 14602 (INT 602), NZ 14605 (INT 605), NZ14600E, NZ200021, NZ300023, NZ300041, NZ300042, NZ300043, NZ300443**

*MV Aquila Explorer*

Chief Executive of the Ministry of Business, Innovation and Employment (in respect of the Non-interference Zones)

NI 11/2015

**NZ 29(T)/15 NEW ZEALAND – South Island – East Coast – Lyttelton Harbour – Sticking Point  
Eastwards – Exclusion Zone.**

1. Mariners are advised that reclamation works are being undertaken in vicinity of Sticking Point until early 2016.

2. An exclusion zone marked by unlit buoys and floats is in effect in the area bounded by the following positions:

- a) 43° 36'.565S., 172° 44'.004E.
- b) 43° 36'.510S., 172° 44'.458E.
- c) 43° 36'.262S., 172° 44'.401E.

3. No vessel is permitted to enter the exclusion zone without consent, and mariners are requested to exercise caution when navigating in the vicinity.

**Charts temporarily affected: NZ 632, NZ 6321, NZ400632, NZ506321, NZ606321**

Port of Lyttelton Ltd.  
NI 14/2015

**NZ 30(T)/15 NEW ZEALAND – South Island – East Coast – Otago Peninsula Eastwards – Seismic Survey.**

1. MV *Polarcus Naila* (call sign C6XK5) is undertaking seismic survey activities in the area bounded by the coordinates given in paragraph 5.2 below until April 2015.
2. MV *Polarcus Naila* is deploying 12 streamers in an array 5NM long, 0.8NM wide, marked by lit tailbuoys *Fl* and is restricted in its ability to manoeuvre. All vessels are requested to pass at least 5NM from the vessel and towed equipment.
3. Support vessels MV *Reef Spirit* (call sign ZMG2890), MV *Sea Pelican* (call sign ZMG2834) and MV *Sealink 161* (call sign 9WKQ3) are in attendance.
4. All vessels are maintaining a listening watch on VHF channel 16.

**Non-interference Zone**

5. Pursuant to section 101B of the Crown Minerals Act 1991, the Chief Executive of the Ministry of Business, Innovation, and Employment hereby gives notice of a non-interference zone in relation to the MV *Polarcus Naila* in Petroleum Exploration Permit PEP 38264.

5.1 The non-interference zone relates to the following activities:

- a) Acquiring seismic data within the permit and relevant authorisation under section 42A of the Crown Minerals Act 1991,
- b) Turning the ship (including turning outside the permit area and section 42A authorisation while not acquiring seismic data),
- c) Refueling by a support ship that occurs within the area given in 5.2 (including the permit area and any authorisation under section 42A of the Crown Minerals Act 1991), and
- d) Repairs to the equipment by a support ship that occurs within the area given in 5.2 (including the permit area and any authorisation under section 42A of the Crown Minerals Act 1991).

5.2 The locality of the activities is bounded by the following positions:

- a) 44° 45'.00S., 171° 40'.00E.
- b) 44° 45'.00S., 173° 45'.00E.
- c) 46° 10'.00S., 173° 45'.00E.
- d) 46° 10'.00S., 171° 12'.00E.
- e) 45° 20'.00S., 171° 12'.00E.
- f) 45° 20'.00S., 171° 40'.00E.

5.3 The area of the non-interference zone is 500m from any point on the outer edge of the MV *Polarcus Naila* and from any point on the outer edge of the equipment attached to the MV *Polarcus Naila* that is involved with any activity as set out above.

5.4 This notice has effect from 23 January 2015 to 22 April 2015 (both days inclusive).

5.5 Refer to Annual New Zealand Notices to Mariners, No.16A, which can be found in the New Zealand Nautical Almanac (NZ 204) and on the LINZ website [www.linz.govt.nz](http://www.linz.govt.nz).

**Charts temporarily affected: NZ 25 (INT 648), NZ 64, NZ 14600 (INT 600), NZ 14601 (INT 601), NZ14600E, NZ200025, NZ300064**

MV *Polarcus Naila*

Chief Executive of the Ministry of Business, Innovation and Employment (in respect of the Non-interference Zone)  
NI 12/2015

**NZ 31(T)/15 SOUTH WEST PACIFIC – Kingdom of Tonga – Hunga Ha’apai Southeastwards – Volcanic Activity.**

1. Underwater volcanic activity and associated gas plume 3.7km altitude reported in approximate position 20°34’S., 175°22’W.
2. Mariners are advised that discoloured water and floating pumice has been reported in the vicinity, and are requested to exercise caution when navigating in the area.

**Charts temporarily affected: NZ 82 (T 82), NZ 14605 (INT 605), NZ 14631 (INT 631), NZ 14638 (INT 638), NZ14605W, NZ214631, NZ300082**

Ministry of Infrastructure Tonga  
NI 10/2015

**NZ 32(T)/15 NEW ZEALAND – North Island – West Coast – Cape Egmont Westwards – Drilling  
Operations Complete.**

*Former notice – NZ 197(T)/14 is cancelled.*

Cancel this notice on receipt.

**Charts formerly affected: NZ 23 (INT 640), NZ 25 (INT 648), NZ 45, NZ 48, NZ 443, NZ200023, NZ300443**

OMV New Zealand Limited  
NI 18/2015

**NZ 33(T)/15 NEW ZEALAND – South Island – East Coast – Lyttelton Harbour – Maintained Depth Restored.**

*Former notice – NZ 130(T)/14 is cancelled.*

Cancel this notice on receipt.

**Charts formerly affected: NZ 63, NZ 632, NZ 6321, NZ300063, NZ400632, NZ506321**

Port of Lyttelton Ltd.  
NI 13/2015

### III

#### CORRECTIONS TO NEW ZEALAND LIGHT LIST

(NZ NTM Edition No.2 dated 23 January 2015)

#### NEW ZEALAND NAUTICAL ALMANAC 2014/15 LIGHT LIST SECTION

*Nil*

---

### IV

#### CORRECTIONS TO SAILING DIRECTIONS AND NEW ZEALAND PUBLICATIONS

(NZ NTM Edition No. 2 dated 23 January 2015)

##### Correction to New Zealand Nautical Almanac (NZ 204), 2014/15 Edition

Pages 198-201, Annual New Zealand Notice to Mariners 3A: Safety of British merchant ships in periods of peace, tension, crisis or conflict.

Delete and replace with:

Accompanying Annual New Zealand Notice to Mariners 3A: Safety of British merchant ships in periods of peace, tension or conflict.

##### NP13 Australia Pilot Volume 1 (2014 Edition)

##### Western Australia – Dampier approaches – Nickol Bay anchorages

240

After Paragraph 6.131 1 line 8 *Insert:*

- 2 **Nickol Bay Anchorage** consists of fourteen anchorages in an area centred 14 miles N of Delambre Island (20°27'·00S 117°04'·70E), as shown on the chart. These anchorages can be used by vessels that might need permission to immobilise their main engines. The depth of water is between 36 m and 40 m, and the diameter of each anchorage is 1 mile. Vessels up to Cape size can be accommodated.

Charts Aus 740, 741  
(SDD 2014000 200416)

[02/15]



## NP13 Australia Pilot Volume 1 (2014 Edition)

### Western Australia – South coast – King George Sound — Light

#### 322

After Paragraph 9.39 *3* line 3 *Insert*:

Breaksea Island Light (masonry tower, white lantern,  
16 m in height) (35°03'·87S 118°03'·45E).

#### 323

Paragraph 9.42 *1* lines 6–7 *Delete*

#### 324

After Paragraph 9.52 *3* line 3 *Insert*:

Breaksea Island Light (35°03'·87S 118°03'·45E)  
(9.39).

Paragraph 9.54 *1* lines 7–8 *For* (masonry tower, white  
lantern, 16 m in height) *Read* (9.39)

Australian Notice 22/1084(P)/2014  
(SDD 2014000 236688) [51/14]

## NP15 Australia Pilot Volume 3 (2012 Edition)

### Queensland – Gladstone – Jacobs Channel — Directions; berths

#### 185

After Paragraph 5.183 *Insert*:

#### Jacobs Channel

##### 5.183a

*1* Jacobs Channel (23°47'·00S 151°11'·90E) lies off  
the SW coast of Curtis Island, and gives access to  
three LNG export jetties, and other smaller facilities.  
The maintained depth throughout Jacobs Channel is  
13·0 m, except alongside the QCLNG jetty (23°46'·70S  
151°11'·75E), where it is 14·0 m.

*2* **Directions.** Jacobs Channel is marked by light  
beacons (lateral) and light buoys (special). The  
channel is entered on passing between T3 Light  
Beacon (special) (23°47'·97S 151°12'·81E) and JC1  
Light Beacon (starboard hand), 2 cables ENE.

##### *3* **Leading lights:**

Front light. JCAF Light Beacon (black tower, with red  
triangle topmark, apex up) (23°46'·32S  
151°11'·02E).

Rear light. JCAR Light Beacon (black tower, with red  
triangle topmark, apex down) (23°45'·84S  
151°10'·46E).

The alignment (312·9°) of the leading lights leads  
through the entrance and the S part of the channel.

##### *4* **Leading lights:**

Front light. APAF Light Beacon (red tower, with red  
triangle topmark, apex up) (23°45'·50S  
151°10'·58E).

Rear light. APAR Light Beacon (black tower, with red  
triangle topmark, apex down) (23°45'·18S  
151°10'·35E).

On passing JC14 Light Beacon (port hand)  
(23°46'·71S 151°11'·35E) the alignment (326·2°) of the  
leading lights leads into the N part of the channel.

##### *5* **Leading lights:**

Front light (23°45'·23S 151°10'·70E).

Rear light (23°45'·22S 151°10'·70E).

On passing JC 22 Light Buoy (port hand)  
(23°46'·00S 151°10'·90E) the alignment (345·3°) of the  
leading lights leads to APLNG MOF Berth.

##### *6* **Useful marks:**

Flare stack (23°46'·34S 151°12'·55E).

Flare stack (23°46'·83S 151°13'·10E).

#### 188

After Paragraph 5.194 *Insert*:

##### *2* **Jacobs Channel Berths:**

Berth GLNG (23°47'·03S 151°12'·12E), dredged to  
13·0 m.

Berth QCLNG (23°46'·70S 151°11'·77E), dredged to  
14·0 m.

Berth QCLNG MOF (23°46'·05S 151°11'·39E) for  
offloading materials; dredged to 7·5 m.

Berth APLNG (23°45'·80S 151°11'·12E), dredged to  
13·0 m.

Berth APLNG MOF (23°45'·40S 151°10'·80E) for  
offloading materials; dredged to 7·5 m.

Queensland Notice 246(P)/2014

Australian NM 18/844/2014

Australian ENC AU5244X5

(SDD 2014000 191420) [51/14]

**NP51 New Zealand Pilot (2010 Edition)**

**North Island –  
Wellington approaches — Major Light**

**94**

Paragraph 4.10 2 line 6 *Delete*

*After* Paragraph 4.11 5 line 8 *Insert:*

Pencarrow Head Light (41°21'·56S 174°50'·87E)  
(4.73).

**98**

Paragraph 4.42 2 line 5 *Delete*

**99**

*After* Paragraph 4.43 4 line 4 *Insert:*

**Useful mark:**

Pencarrow Head Light (41°21'·56S 174°50'·87E)  
(4.73).

**101**

Paragraph 4.71 2 lines 2–3 *Delete*

**103**

*After* Paragraph 4.73 6 line 4 *Insert:*

Pencarrow Head Light (white tower, concrete base,  
17 m in height) (41°21'·56S 174°50'·87E).

**107**

Paragraph 4.92 1 line 2 *Delete*

**108**

*After* Paragraph 4.93 3 line 5 *Insert:*

Pencarrow Head Light (41°21'·56S 174°50'·87E)  
(4.73).

New Zealand notice 273(P)/2014  
(SDD 2014000 272684)

[04/15]

**North Island – Wellington Harbour — Wreck**

**103**

*After* Paragraph 4.75 3 line 6 *Insert:*

**Caution.** A wreck with a depth over it of 14·0 m  
lies 8½ cables ENE of Point Haswell Light in position  
41°16'·72S 174°50'·60E.

New Zealand Notice 271(P)/2014  
(SDD 2014000 272684)

[04/15]

**NP62 Pacific Islands Pilot Volume 3  
(2013 Edition)**

**Hawaiian Islands – Kauai Island –  
Nawiliwili — Major light**

**326**

Paragraph 14.17 2 lines 4–6 *Delete*

*After* Paragraph 14.18 4 line 6 *Insert:*

Nawiliwili Harbour Light (beige round concrete  
tower, 22 m in height) (21°57'·30N 159°20'·15W).

**328**

Paragraph 14.41 1 lines 5–7 *Delete*

*After* Paragraph 14.43 4 line 1 *Insert:*

Nawiliwili Harbour Light (21°57'·30N 159°20'·15W)  
(14.18).

**329**

Paragraph 14.51 1 lines 5–7 *Delete*

*After* Paragraph 14.52 4 line 1 *Insert:*

Nawiliwili Harbour Light (21°57'·30N 159°20'·15W)  
(14.18).

USA Notice 50/19004/2014  
(SDD 2014000 255745)

[52/14]

## V

### NAVIGATIONAL WARNINGS

Warnings in force 21 January 2015

#### NAVAREA XIV

(South West Pacific)

- 96/14 FM NAVAREA XIV COORDINATOR 092000 UTC DEC 14  
NAVAREA XIV 96/14  
SOUTHERN OCEAN  
VOLUNTARY SHIP REPORTING SYSTEM IN THE NEW ZEALAND SEARCH AND RESCUE AREA SOUTH OF 60-00S  
1. THE NEW ZEALAND SEARCH AND RESCUE AUTHORITIES HAVE ESTABLISHED A VOLUNTARY SHIP REPORTING SYSTEM FOR ALL VESSELS OPERATING IN THE NZSAR REGION SOUTH OF 60-00S FOR THE PURPOSES OF ASSISTING THE SAR AUTHORITY IN COORDINATING SAR OPERATIONS IN THAT AREA.  
2. AREA COVERED: 60-00S TO THE SOUTHERN EDGE OF THE ROSS SEA BOUNDED BY 163-00E TO 131-00W.  
3. ALL VESSELS ARE REQUESTED TO NOTIFY TAUPU MARITIME RADIO ON ENTRY AND DEPARTURE INTO THE AREA AND ARE ALSO ENCOURAGED TO MAKE DAILY POSITION REPORTS. INFORMATION PROVIDED WILL BE USED FOR SAR PURPOSES ONLY.  
4. TAUPU MARITIME RADIO CAN BE CONTACTED ON INMARSAT C 582 451 200 067, HF, EMAIL MARITIME@KORDIA.CO.NZ OR 00 64 4 550 5280.
- 04/15 FM NAVAREA XIV COORDINATOR 122130 UTC JAN 15  
NAVAREA XIV 04/2015  
SOUTH PACIFIC OCEAN.  
CHART NZ22 (INT 639), NZ14638 (INT 638)  
1. UNDERWATER VOLCANIC ACTIVITY REPORTED IN VICINITY 25-53S 177-11W.  
2. MARINERS ARE ADVISED GAS MAY BE PRESENT AT THE SEA SURFACE AND TO KEEP WATCH FOR DISCOLOURED WATER.
- 05/15 FM NAVAREA XIV COORDINATOR 132100 UTC JAN 15  
NAVAREA XIV 5/15  
SOUTH PACIFIC OCEAN  
TONGA  
CHART NZ 82 (T 82)  
1. CANCEL NAVAREA XIV 02/15  
2. UNDERWATER VOLCANIC ACTIVITY REPORTED IN VICINITY 20-34S 175-22W.  
3. GAS PLUME 3.7KM ALTITUDE REPORTED AT SEA SURFACE.  
4. DISCOLOURED WATER AND FLOATING PUMICE REPORTED.

#### NZ Coastal Navigational Warnings

(Area Z)

- 03/15 FM: RCC NEW ZEALAND 150500 UTC JAN 15  
COASTAL NAVIGATION WARNING 3/15  
AREA COOK  
1. SURVEY IN PROGRESS BY MV SEASURVEYOUR IN AREA BOUNDED BY:  
A. 41-18.40S 174-14.30E  
B. 41-15.90S 174-35.80E  
C. 41-20.10S 174-39.20E  
D. 41-22.50S 174-10.00E  
VESSEL RESTRICTED IN HER ABILITY TO MANOEUVRE
- 04/15 FM: RCC NEW ZEALAND 151900 UTC JAN 2015  
COASTAL NAVIGATION WARNING 4/15  
AREA PLENTY AND COLVILLE  
CUVIER ISLAND (REPANGA ISLAND) BAY OF PLENTY.  
1. LIVE FIRING 201900 UNTIL 210730 AND 211900 UNTIL 220730 UTC JAN 15 IN DANGER AREA M204. ANNUAL NEW ZEALAND NOTICES TO MARINERS NUMBER 5 REFERS.  
2. CANCEL THIS MESSAGE 220830 UTC JAN 15.

- 07/15 FM: RCC NEW ZEALAND 191915 UTC JAN 15  
 COASTAL NAVIGATION WARNING 7/15  
 AREA MILFORD AND PUYSEGUR  
 FIORDLAND MARITIME RADIO VHF CHANNEL 16 UNAVAILABLE.  
 VESSELS TRANSITING AREA MILFORD AND PUYSEGUR ARE REQUESTED TO MAINTAIN  
 A LISTENING WATCH ON VHF 16. LIMITED COVERAGE MAY BE AVAILABLE VIA FOX  
 MARITIME RADIO OR PUYSEGUR MARITIME RADIO OR TAUPO MARITIME RADIO/ZLM VIA  
 SSB.
- 09/15 FM: RCC NEW ZEALAND 200045 UTC JAN 15  
 COASTAL NAVIGATION WARNING 9/15  
 AREA RAGLAN  
 SEMI SUBMERSIBLE RIG KAN TAN IV ANCHORED IN POSITION 38-53.50S 173-55.60E. ALL  
 VESSELS ARE ADVISED TO KEEP AT LEAST 2 NAUTICAL MILES FROM THE RIG TO AVOID  
 UNDERWATER OBSTRUCTIONS. A MARINE EXCLUSION ZONE OF 500METERS IS IN  
 EFFECT FOR ALL VESSELS OTHER THAN ATTENDING RIG SUPPORT VESSELS.





## VI

### CORRECTIONS TO ADMIRALTY LIST OF RADIO SIGNALS (NZ NTM Edition No. 2 dated 23 January 2015)

**VOLUME 1, PART 2, NP 281(2), 2014/15**  
 Published Wk 37/14  
 (Last Updates: Weekly Edition No. 47 dated 20 November 2014)

### MARITIME RADIO STATIONS

**PAGE 211, NEW ZEALAND, PRE-ARRIVAL QUARANTINE REPORTING.**  
 Delete entry and replace by:

MINISTRY OF PRIMARY INDUSTRIES (MPI) NEW ZEALAND			
<b>MPI Wellington (General Enquires)</b>	 +64 4 894 0100	 +64 4 894 0228	standards@mpi.govt.nz
<b>Approved Place of First Arrival (MPI Office Contacts)</b>			e-mail
Auckland Wharf	+64 9 909 3019 29 909 3046 (after hours)	+64 9 303 3037	mqsakw@mpi.govt.nz
Bluff (and Tiwai Point)	+64 3 214 3598 29 948 2105 (after hours)	+64 3 948 2109	mqsivc@mpi.govt.nz
Dunedin (and Port Chalmers)	+64 3 951 4707 29 951 4713 (after hours)	+64 3 951 4711	mqsud@mpi.govt.nz

*continued on next page*

Gisborne	+64 6 867 6888 29 894 4521 (after hours)	+64 6 867 9325	mqsngis@mpi.govt.nz
Lyttelton	+64 3 328 7166 29 943 1514 (after hours)	+64 3 328 7186	mqslyt@mpi.govt.nz
Marsden Point (near Whangarei)	+64 9 432 5010	+64 9 432 8749	
Napier	+64 6 835 4229	+64 6 835 9125	mqsnpa@mpi.govt.nz
Nelson	+64 3 545 7774	+64 3 545 7775	mqsnsn@mpi.govt.nz
New Plymouth	+64 6 759 1670 29 909 5501 (after hours)	+64 6 759 1671	mqsnpn@mpi.govt.nz
Opuia (Northland) (yachts only)	+64 9 402 5946 800 222 018 (after hours)	+64 9 402 5980	mqswnr@mpi.govt.nz
Picton	+64 3 545 7774	+64 3 545 7775	mqsnsn@mpi.govt.nz
Taharoa	+64 7 927 8328 29 957 8334 (after hours)	+64 7 957 8317	mqsstrg@mpi.govt.nz
Tauranga	+64 7 927 5709 & 5700 +64 29 927 5709 29 909 5017 (after hours)	+64 7 927 5701	mqsstrg@mpi.govt.nz
Timaru	+64 3 684 2615 29 943 1515 (after hours)	+64 3 684 7196	mqssti@mpi.govt.nz
Wellington	+64 4 894 4213		mqswwg@mpi.govt.nz

**PROCEDURE:**

All commercial vessels must apply in writing, 48 hours in advance of arrival of the vessel, to a number of New Zealand government agencies. The **Advance Notice of Arrival** form (NZCS344) has combined the appropriate government departments' information requirements for commercial vessels arriving in New Zealand from an overseas port. This form replaces all other methods of requesting radio pratique. Contact with **MPI** can be made at:

Fax: +64 9 909 3729  
e-mail: vessels@mpi.govt.nz

Or to the **NZ Customs Service** at:

e-mail: apicustodian@customs.govt.nz

All vessels must arrive at an **Approved Place of First Arrival** (listed above), unless there is an emergency or prior approval has been granted by **MPI** to enter at another location. Port specific questions can be directed to MPI inspectors at the intended arrival port.

On arrival in New Zealand, vessels must proceed to a nominated customs place, unless authorised by the Chief Executive of Customs, or compelled by navigation-related requirements or accident or stress of weather or other necessity, to arrive elsewhere. As the Notice is required by other NZ border agencies 48 hours prior to the ETA, a **"no change of status report"** relating to health information that may have been already provided on the Advance Notice of Arrival, is required at least 12 hours and not earlier than 24 hours prior to the ETA, to confirm that the health status of the crew has not changed. The "no change of status report" can be made by radio, phone, fax or e-mail depending on what suits the local situation.

**CRUISE SHIPS:** Cruise Ships wishing to arrive at Opuia, Milford Sound or other non-designated ports of arrival must apply to MPI at a port of arrival well ahead of the start of the cruise season.

**YACHTS AND SMALL VESSELS:**

Yachts and small vessels are required to give 48 hours notice to the NZ Customs Service and MPI Quarantine of the expected port of entry and time of arrival (**Advance Notice of Arrival (small craft)**) form (NZCS340). This information should be supplied electronically to:

Fax: +64 3 358 0069  
e-mail: yachts@customs.govt.nz

When not possible to use electronic means, telephone: +64 9 927 8036

To avoid delays in processing, and 12 hours prior to arrival, contact should be made to confirm or update ETA. This can be done via Taupo Maritime Radio Wellington on RT (MF) 2182 kHz, RT (HF) 4125, 6215, 8291 kHz, or VHF Ch 16.

**REMARKS:** This is a brief summary of the MPI (NZ) quarantine formalities. Further information, including copies of the Advance Notice of Arrival form can be found at: [www.biosecurity.govt.nz/enter/ships](http://www.biosecurity.govt.nz/enter/ships)

**NOTE:** A copy of the Maritime Declaration of Health form and radio quarantine reporting codes are listed at the end of the Maritime Radio Stations section.

**VOLUME 2, NP282, 2014/15**

Published Wk 13/14

(Last Updates: Weekly Edition No. 51 dated 18 December 2014)

**RADAR BEACONS**

**AUTOMATIC IDENTIFICATION SYSTEM (AIS)**

**PAGE 146, AUSTRALIA.**

**Cape Liptrap Lt**

Delete entry

Australian Notice 23/1125/14 (RSDRA2014000247014) 52/14

Wk52/14

**PAGE 148, AUSTRALIA, below Port of Dampier Sea Lt Buoy.**

Insert:

Prince of Wales Channel - OG Rock	10°29'87S 142°20'75E	995036100		Virtual	
-----------------------------------	----------------------	-----------	--	---------	--

Australian Notice 24/1185(P)/14 (RSDRA2014000255330) 1/15

Wk 01/15

**PAGE 148, AUSTRALIA, below Stybarrow Venture Storage Tanker.**

Insert:

Wongara North	32°02'44S 115°45'12E	995036101		Virtual	
Wongara South	32°02'50S 115°45'03E	995036102		Virtual	

Fremantle Port Notice 4/14 (RSDRA2015000000370) 4/15

Wk 04/15

VOLUME 3, PART 2, NP 283(2), 2014/15

Published Wk 52/14

First Updates to publication Wk 52/14

The 2013/14 edition is cancelled

PAGE ii, RECORD OF UPDATES, NEW EDITION, First Updates box.  
Insert:

This edition was published in week 52/14.  
The first Weekly Notice to Mariners was issued in week 52/14.

UKHO 52/14

RADIO WEATHER SERVICES AND NAVIGATIONAL WARNINGS

PAGE 85, AUSTRALIA, ADELAIDE.  
Delete entry and replace by:

ADELAIDE				34°56'00S 138°40'00E	
A	8176	RT (HF)			
B	Ch 67	VHF			
DIAGRAMS: pages 23 and 89					
Navigational Warnings					
A: On receipt 0325 0725		Navigational Warnings for Auscoast Sea Areas D, E and F.			
B: On receipt 0357 0757					

Australian Bureau of Meteorology correspondence (RSDRA2014000244516 & RSDRA2014000247541) 51/14

PAGE 92, AUSTRALIA, CAIRNS.  
Delete entry and replace by:

CAIRNS				16°53'61S 145°44'90E	
A	8176	RT (HF)			
B	Ch 67	VHF			
DIAGRAMS: pages 23 and 89					
Navigational Warnings					
A: On receipt 1225 2325		Navigational Warnings for Auscoast Sea Areas H, A and B.			
B: On receipt 1257 2357					

Australian Bureau of Meteorology correspondence (RSDRA2014000244516 & RSDRA2014000247541) 51/14

PAGE 92, AUSTRALIA, DARWIN.  
Delete entry and replace by:

DARWIN				12°27'00S 130°51'00E	
A	8176	RT (HF)		Darwin	
B	Ch 67	VHF		Gove	
C	Ch 28				
DIAGRAMS: pages 23, 87, 89 and 91					
Weather Bulletins					
B: 0833 2233		Weather forecast for Darwin Harbour and coastal waters between Daly River and Cape Don.			
C: 0903 2233		Local weather			
Navigational Warnings					
On receipt A: 0125 0925		Navigational Warnings for Auscoast Sea Areas G, H and A.			
On receipt B: 0157 0957					

Australian Bureau of Meteorology correspondence (RSDRA2014000244516 & RSDRA2014000247541) 51/14

**PAGE 93, AUSTRALIA, GLADSTONE.**

Delete entry and replace by:

<b>GLADSTONE</b>			23°52'·37S 151°17'·34E	
<b>A</b>	8176	RT (HF)		
<b>B</b>	Ch 67	VHF		
DIAGRAMS: pages 23 and 89				
<b>Navigational Warnings</b>				
<b>A:</b> On receipt 1125 2225	Navigational Warnings for Auscoast Sea Areas A, B and C.			
<b>B:</b> On receipt 1157 2257				

[Australian Bureau of Meteorology correspondence \(RSDRA2014000244516 & RSDRA2014000247541\) 51/14](#)

**PAGE 94, AUSTRALIA, MELBOURNE.**

Delete entry and replace by:

<b>MELBOURNE</b>			38°27'·55S 144°54'·72E	
<b>A</b>	8176	RT (HF)		
<b>B</b>	Ch 67	VHF	Port Philip	
			Western Port Bays	
DIAGRAMS: pages 23 and 89				
<b>Weather Bulletins</b>				
<b>B:</b> 0848 2048	Local forecasts.			
<b>Navigational Warnings</b>				
<b>A:</b> On receipt 0225 2125	Navigational Warnings for Auscoast Sea Areas C, D and E.			
<b>B:</b> On receipt 0257 2157				
<b>B:</b> 0848 2048 (after Weather Bulletin)	Local warnings.			
NOTE: Warnings preceded by an announcement on VHF Ch 16.				

[Australian Bureau of Meteorology correspondence \(RSDRA2014000244516 & RSDRA2014000247541\) 51/14](#)

**PAGE 94, AUSTRALIA, PERTH.**

Delete entry and replace by:

<b>PERTH</b>			31°51'·31S 115°49'·18E	
<b>A</b>	8176	RT (HF)		
<b>B</b>	Ch 67	VHF	Water Police	
DIAGRAMS: pages 23 and 89				
<b>Weather Bulletins</b>				
<b>B:</b> 1118 2318	Local weather forecasts.			
<b>Navigational Warnings</b>				
<b>A:</b> On receipt 0625 1025	Navigational Warnings for Auscoast Sea Areas E, F and G.			
<b>B:</b> On receipt 0657 1057				
<b>B:</b> 1118 2318	Local Navigational Warnings.			
<b>B:</b> Every 2 hours	Severe weather warnings			

[Australian Bureau of Meteorology correspondence \(RSDRA2014000244516 & RSDRA2014000247541\) 51/14](#)



**PAGE 94, AUSTRALIA, PORT HEDLAND.**

Delete entry and replace by:

<b>PORT HEDLAND</b>			20°22'·90S 118°37'·62E	
<b>A</b>	8176	RT (HF)		
<b>B</b>	Ch 67	VHF		
DIAGRAMS: pages 23 and 89				
<b>Navigational Warnings</b>				
<b>A:</b> On receipt 0425 0825	Navigational Warnings for Auscoast Sea Areas F, G and H.			
<b>B:</b> On receipt 0457 0857				

Australian Bureau of Meteorology correspondence (RSDRA2014000244516 & RSDRA2014000247541) 51/14

**PAGE 95, AUSTRALIA, SYDNEY.**

Delete entry and replace by:

<b>SYDNEY</b>			33°48'·00S 150°52'·00E	
<b>A</b>	8176	RT (HF)		
<b>B</b>	Ch 67	VHF		
DIAGRAMS: pages 23, 87 and 890				
<b>Weather Bulletins</b>				
<b>B:</b> 0733 2133	Local forecasts.			
<b>Navigational Warnings</b>				
<b>A:</b> On receipt 0025 1325	Navigational Warnings for Auscoast Sea Areas B, C and D.			
<b>B:</b> On receipt 0057 1357				
<b>B:</b> On receipt 0733 2133	Local Navigational Warnings.			
<b>B:</b> On receipt and then every hour	Local severe weather warnings			

Australian Bureau of Meteorology correspondence (RSDRA2014000244516 & RSDRA2014000247541) 51/14

**PAGE 98, AUSTRALIA, VMC AUSTRALIA WEATHER EAST (CHARLEVILLE).**

Delete entry and replace by:

<b>VMC AUSTRALIA WEATHER EAST (CHARLEVILLE)</b>			26°19'·00S 146°16'·00E	
	2201	RT (HF)		0800-2100
	4426			2100-0800
	6507			0800-2100
	8176			H24
	12365			
	16546			2100-0800
DIAGRAMS: pages 87, 88, 89, 90 and 91				
<b>Weather Bulletins</b>				
Every H+00	Warnings for Coastal Waters of Queensland, New South Wales, Victoria and Tasmania. Warnings for High Seas Areas Northern, North Eastern and South Eastern.			
Every H+25	Navigation MSI notices.			
0030 0430 0830 1230 1630 2030	Forecasts for coastal waters of Tasmania.			

continued on next page

0130 0530 0930 1330 1730 2130	Forecasts for coastal waters of Queensland and Northern Territory east of Cape Don.
0230 0630 1030 1430 1830 2230	Forecasts for High Seas Areas Northern, North Eastern and South Eastern.
0330 0730 1130 1530 1930 2330	Forecasts for coastal waters of New South Wales and Victoria.

Australian Bureau of Meteorology correspondence (RSDRA2014000244516 & RSDRA2014000247541) 51/14

**PAGE 98, AUSTRALIA, VMW AUSTRALIA WEATHER WEST (WILUNA).**

Delete entry and replace by:

<b>VMW AUSTRALIA WEATHER WEST (WILUNA)</b>		<b>26°21'·00S 120°34'·00E</b>	
	2056	RT (HF)	1000-2300
	4149		2300-1000
	6230		1000-2300
	8113		H24
	12362		
	16528		2300-1000
DIAGRAMS: pages 87, 88, 89, 90 and 91			
<b>Weather Bulletins</b>			
Every H+00	Warnings for Coastal Waters of Queensland (Gulf of Carpentaria), Northern Territory, Western Australia and South Australia Warnings for High Seas Areas Northern and Western.		
Every H+25	Navigation MSI notices.		
0030 0430 0830 1230 1630 2030	Forecasts for coastal waters of Western Australia south of North West Cape.		
0330 0730 1130 1530 1930 2330	Forecasts for coastal waters of Western Australia east of North West Cape, including all the Northern Territory waters.		
0230 0630 1030 1430 1830 2230	Forecasts for High Seas Areas Northern and Western. Forecasts for coastal waters of Queensland (Gulf of Carpentaria).		
0130 0530 0930 1330 1730 2130	Forecasts for coastal waters of South Australia.		

Australian Bureau of Meteorology correspondence (RSDRA2014000244516 & RSDRA2014000247541) 51/14

Wk52/14

(Last Updates: Weekly Edition No. 50 dated 11 December 2014)

**PAGE 94, AUSTRALIA, WEIPA, Queensland, Vessel Traffic Service.**

Delete and replace by:

**Vessel Traffic Service**

**DESCRIPTION:**

The Weipa Vessel Traffic Service provides the following levels of service within the VTS area:

- (1) **Information Service:** The VTS at the request of a vessel, will transmit essential and timely information to assist the on-board decision making process, which may include: position, identity and intentions of other traffic, hazards and other factors which may affect a vessel's transit.
- (2) **Traffic Organisation Service:** The VTS will forward plan vessel movements to prevent congestion and provide for safe and efficient movement of traffic. The VTS will identify and manage potentially dangerous traffic situations and provide essential and timely information to assist the on-board decision making process and may advise, instruct, or exercise the authority to direct movements.
- (3) Weipa VTS does not provide a Navigational Assistance Service.

**CONTACT DETAILS:**

Call: Weipa VTS (provided from Cairns VTS)  
VHF Channel: Ch 16; 08 12  
Telephone: +61(0)7 40527470  
Fax: +61(0)7 40527460  
E-mail: vtscairns@msq.qld.gov.au

**REPORTING POINTS:**

- (1) **Vessels inward-bound:** All vessels must call Weipa VTS via VHF Chs 16 or 12 at the following times:
  - (a) Two hours prior to arrival
  - (b) When entering South Channel on passing the Fairway Lt Bn
  - (c) When secure at a berth (naming the wharf)
- (2) **Vessels outward-bound or shifting berth:** All vessels departing from a wharf or anchorage within the Weipa Harbour Area must call Weipa VTS at the following times:
  - (a) On leaving a wharf
  - (b) On securing to another wharf (removal)
  - (c) On passing Fairway Lt Bn

[Maritime Safety Queensland Notice 595/14, \(RSDRA2014000238450, RSDRA2014000246761 & RSDRA2014000249601\), 51/14](#)

**PAGE 95, AUSTRALIA, WEIPA, Queensland, Port.**

Delete and replace by:

**Port**

**CONTACT DETAILS:**

**Harbour Control**

Call: Weipa VTS (provided by Cairns VTS)  
VHF Channel: Ch 16; 08 12  
Telephone: +61(0)7 40527470  
Fax: +61(0)7 40527460  
E-mail: vtscairns@msq.qld.gov.au

**Regional Hr Mr (Cairns)**

Telephone: +61(0)7 40527400  
Fax: +61(0)7 40527451  
E-mail: rhmcairns@msq.qld.gov.au

**Port Authority (North Queensland Bulk Ports Corporation)**

Telephone: +61(0)7 32247088 (Brisbane Office)  
+61(0)7 40697749 (Weipa Office)  
Fax: +61(0)7 32247234 (Brisbane Office)  
+61(0)7 40697518 (Weipa Office)  
E-mail: info@nqbp.com.au  
Website: www.nqbp.com.au

**Wilhelmsen Ship Services**

Telephone: +61(0)7 40697203 (Office hours)  
+61(0)7 40697938 (AOH)  
Telex: +71 48808 (Rio Tinto AA48808)

**Rio Tinto Emergency Services**

Telephone: +61(0)7 40698444

**Tugs**

VHF Channel: Ch 06 (outward-bound) 08 (inward-bound)

**HOURS: H24**

**PROCEDURE:**

- (1) Vessels can confirm ETA direct to Weipa VTS via VHF Chs 16 or 12 or Wilhelmsen Ship Services by telephone, fax or telex.
- (2) Vessels should contact Weipa VTS via VHF Ch 16 or 12, 2h and 1h before arrival at the Pilot boarding position to confirm ETA and to obtain Pilot boarding information. Weipa VTS should also be notified when a vessel anchors off the port.

**OIL SPILL:**

All pollution incidents occurring in the Weipa Region are to be reported to Weipa VTS by VHF or telephone.

**DANGEROUS GOODS:**

- (1) A manifest of dangerous goods must be received not less than 48h prior to the vessel's ETA at the pilotage area.
- (2) Permission must be obtained from the Port Authority in order to transport dangerous goods across any wharf and the onus is on the Master and/or owner of any vessel carrying dangerous goods to comply with all the necessary international and local authority regulations.

[Maritime Safety Queensland Notice 595/14, \(RSDRA2014000238450, RSDRA2014000246761 & RSDRA2014000249601\), 51/14](#)

**PAGE 95, AUSTRALIA, below WEIPA entry.**

Insert new diagram WEIPA VESSEL TRAFFIC SERVICE on page 6.16

[Maritime Safety Queensland Notice 595/14, \(RSDRA2014000238450, RSDRA2014000246761 & RSDRA2014000249601\), 51/14](#)

*continued on next column*



P:\11\102\1000 - SJ\Map\WV\WV.PRI

---

**VOLUME 6, PART 4, NP 286(4), 2014/15**

Published Wk 32/14

---

*(Last Updates: Weekly Edition No. 52 dated 25 December 2014)*

**PAGE 247, NEW ZEALAND, GISBORNE, Port, CONTACT DETAILS, Hr Mr.**

Delete and replace by:

**Hr Mr**

Telephone: +64(0)6 8685129

+64(0)6 9299924 (H24)

+64(0)21 860569 (Mobile)

Fax: +64(0)6 8678084

E-mail: rahul.doshi@eastland.co.nz

New Zealand Notice 25/14, (RSDRA2014000263432), 1/15

Wk01/15

---

(NI 16/2015)

## HYDROGRAPHIC NOTE

(For instructions, see next page)

New Zealand Hydrographic Authority  
Land Information New Zealand  
Radio New Zealand House  
155 The Terrace  
PO Box 5501  
Wellington 6145  
New Zealand

Tel: 0800 665 463 or +64 (0)4 460 0110

Fax: +64 (0)4 460 0161

Email: [ntm@linz.govt.nz](mailto:ntm@linz.govt.nz)

Date ..... Ref. No. ....

Name and address of ship or sender

.....  
.....

Tel/Fax/Telex/Email of sender .....

General locality .....

Subject .....

Position. Lat. .... Long. ....

Position fixing system used .....

Datum .....

Paper Chart/ENC affected ..... Edition .....

Dated .....

Latest Notice to Mariners held .....

Publications affected (Edition No. and date of latest supplement, page no., ID no. etc) .....

Details:

A replacement copy of Chart No. ....  
is required (see Instruction 4).

Signature of observer/reporter .....

# HYDROGRAPHIC NOTE

## Forwarding Information for Charts and Hydrographic Publications

**Note:** An acknowledgement of receipt will be sent and the information then used to the best advantage, which may mean immediate action or inclusion in a revision in due course. When a Notices to Mariners is issued, the sender's ship or name is quoted as authority unless (as sometimes happens) the information is also received in a foreign Notices to Mariners. An explanation of the use of contributions from all parts of the world would be too greater task and a further communication should only be expected when the information is of outstanding value or has unusual features.

### INSTRUCTIONS:

1. Mariners are requested to notify New Zealand Hydrographic Authority, Land Information New Zealand, 155 The Terrace, PO Box 5501, Wellington 6145, New Zealand, when new or suspected dangers to navigation are discovered, changes observed in aids to navigation, or corrections to publications seem to be necessary. The Admiralty publication, *The Mariner's Handbook* (NP 100), Chapter 4, gives general instructions.
2. This form and its instructions have been designed to help both the sender and the recipient. It should be used, or followed, closely, whenever appropriate. Copies of this form may be obtained gratis from the New Zealand Hydrographic Authority at the address above, or in PDF format directly from the LINZ website, [www.linz.govt.nz/hydro](http://www.linz.govt.nz/hydro). Hydrographic Notes can also be sent from mobile devices using the Hydrographic Notes Application available for [Android](#) and [Apple](#) devices.
3. When a position is defined by sextant angles or bearings (true or magnetic being specified) more than two should be used in order to provide a check. Distances observed by radar should be quoted. However, when there is a series of fixes along a ship's course, only the method of fixing and the objects used need to be indicated. Latitude and longitude should only be used specifically to position the details when they have been fixed by astronomical observations or GPS and a full description of the method, equipment and datum used should be given.
4. Paper Charts: A cutting from the largest scale paper chart is the best medium for forwarding details, the alterations and additions being shown thereon in red. When requested, a new copy will be sent in replacement of a chart that has been used to forward information, or when extensive observations have involved defacement of the observer's chart. If it is preferred to show the amendments on a tracing of the largest scale chart (rather than the chart itself) these should be in red as above, but adequate detail from the chart must be traced in black ink to enable the amendments to be fitted correctly.

Electronic Navigational Charts (ENCs): A screen dump of the largest scale usage band ENC with the alterations and additions being shown thereon in red.

5. When soundings are obtained, *The Mariners Handbook* (NP 100) should be consulted. The echo sounding trace should be marked with times, depths, etc., and forwarded with the report. It is important to state whether the echo sounder is set to register depths below the surface, or below the keel; in the latter case the vessel's draught should be given. Time and date should be given in order that corrections for the height of the tide may be made where necessary. The make, name, and type of echo sounder set should also be given.
6. Modern echo sounders frequently record greater depths than the set's nominal range, e.g. with a set whose maximum is 500m a trace appearing at 50m may in fact be 550m or even 1,050m. Erroneous deep soundings beyond the sets nominal range can usually be recognised by the following:
  - (a) The trace being weaker than normal for the depth registered
  - (b) The trace appearing to pass through the transmission line
  - (c) The "feathery" nature of the trace.
7. Reports which cannot be confirmed or are lacking in certain details should not be withheld. Shortcomings should be stressed and any firm expectation of being able to check the information on a succeeding voyage should be mentioned.
8. Reports of shoal soundings, uncharted dangers and navigational aids out of order should, at the mariner's discretion, also be made by radio to the nearest coast radio station. The draught of modern tankers is such that any uncharted depth under 30 metres or 15 fathoms may be of sufficient importance to justify a radio message.

IPS Radio and Space Services  
Local Area Mobile Predictions

March, 2015

# NAVAREA XIV

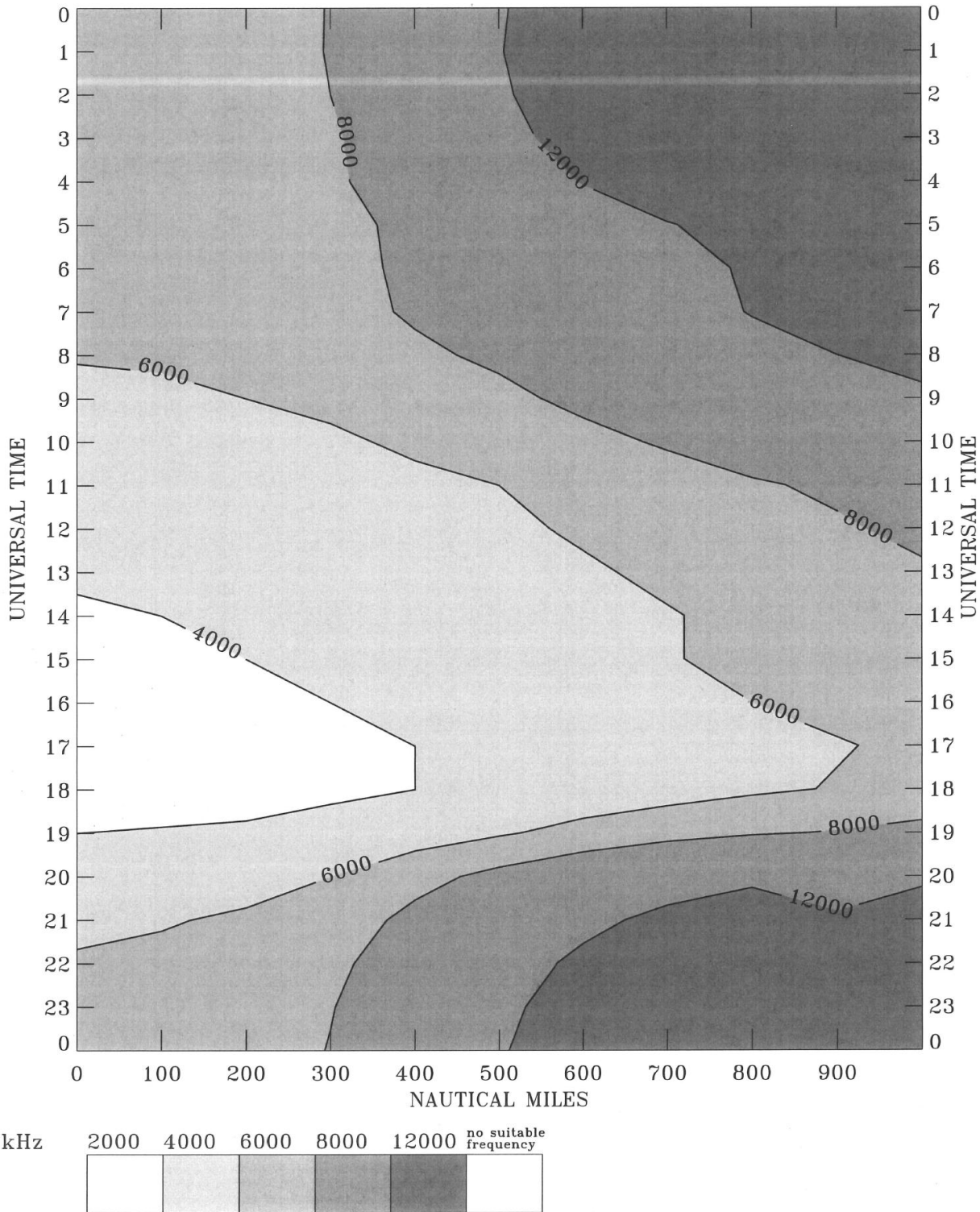
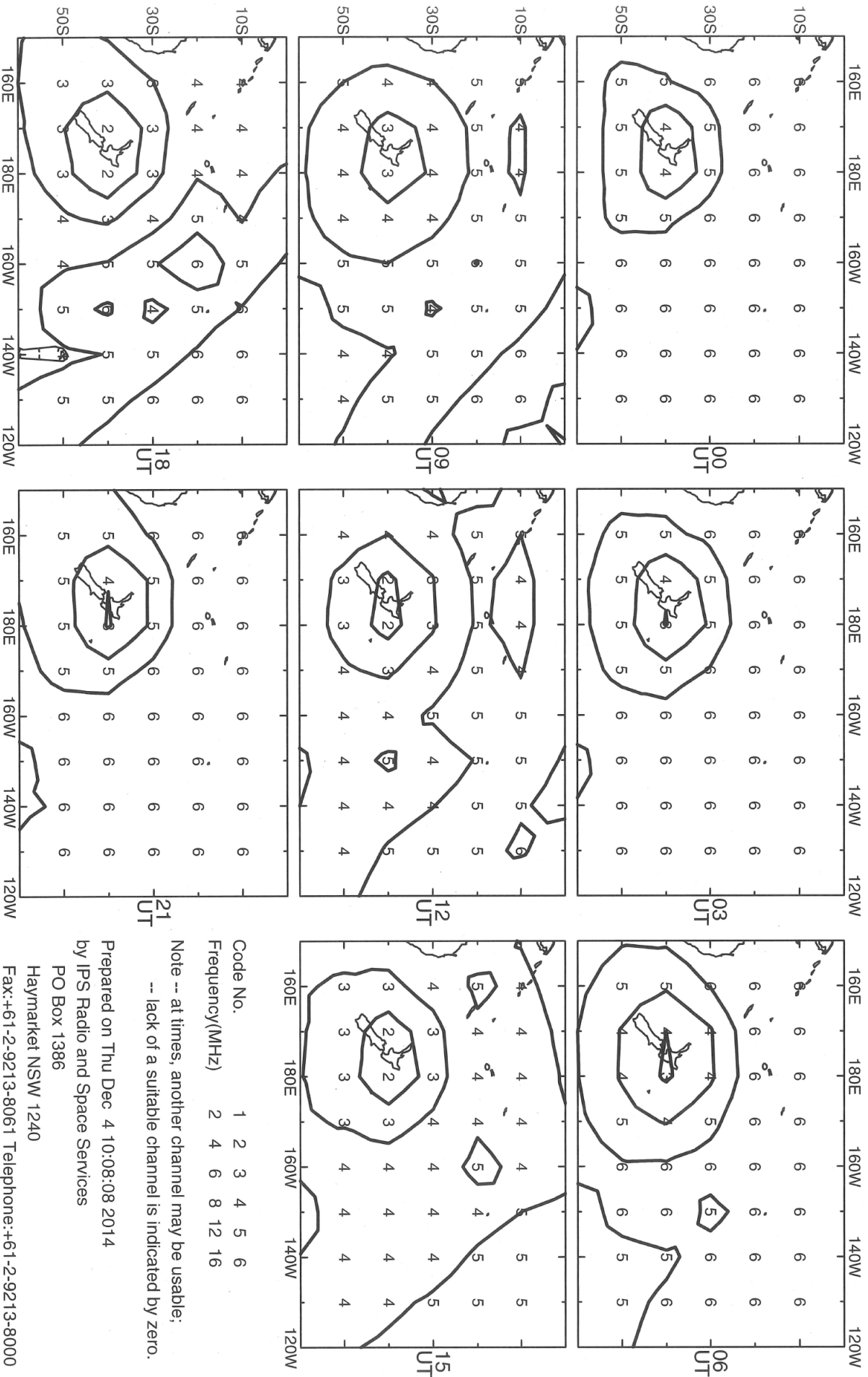


Chart: 1

Address No: 9038



**Recommended frequency bands for communication with Taupo**  
**February - April 2015**



The material in this notice has been reproduced from Admiralty Notices to Mariners, Annual Notice 3/15. Reproduced with the permission of the United Kingdom Hydrographic Office

Source: UK Ministry of Defence (NAVY).

## 1. GENERAL

1.1 This notice describes the organisation by which the Royal Navy communicates with merchant vessels in periods of peace, tension and conflict. Such messages will normally relate to the safety and security of vessels.

1.2 Participation in the procedures outlined in this Annual Notice is encouraged. Detailed reporting will be in accordance with Annex A.

## 2. UK MILITARY / CIVIL SHIPPING RELATIONS

2.1 Through the Shipping Defence Advisory Committee, the UK Ministry of Defence and its partners across Government (specifically the Foreign and Commonwealth Office (FCO) and the Department for Transport (DfT)) maintains regular and frequent dialogue with the UK Shipping Industry, particularly the UK Chamber of Shipping but also with individual companies and other groups. Within Government, the National Maritime Information Centre (NMIC) provides a cross-Government forum for sharing maritime security information.

2.2 The Royal Navy Maritime Trade Operations (MTO) organisation provides the operational liaison and interaction between military commanders and the merchant shipping community.

2.3 The Royal Navy's Maritime Trade Information Centre (MTIC), based in Portsmouth UK provides the hub for the worldwide provision of all information pertinent to merchant vessels operating in designated Operational Areas, in particular the Indian Ocean High Risk Area.

## 3. CURRENT OPERATIONS

3.1 In preserving maritime security, the Royal Navy maintains a Recognised Maritime Picture (RMP) of military and merchant vessels, and affords military commanders an understanding of all vessels passing through a particular area. This understanding allows military authorities to advise and assist merchant vessels when it is appropriate to do so.

3.2 In response to the threat of terrorism, regional instability and also the threat from piracy, the Royal Navy has established a deployed MTO team in Dubai to provide direct face-to-face liaison with masters and operators. The MTIC administers the Merchant Vessel Voluntary Reporting Scheme, on behalf of UKMTO Dubai, for vessels transiting the Indian Ocean High Risk Area and provides advice on current military operations in the region. For counter piracy operations, the MTIC is the primary point of contact for shipping in the area. Further details on the Voluntary Reporting Scheme are provided in BMP4. Contact details are provided at Annex A.

3.3 In addition to UK national activity, British forces frequently operate under NATO and European Union Naval Force (EUNAVFOR) commands. During a NATO operation, the NATO Shipping Centre (NSC), based in Northwood, is the focal point for liaison with merchant shipping. In the Gulf of Aden, the Maritime Security Centre (Horn of Africa) (MSCHOA) administers the Group Transit Scheme through the Internationally Recognised Transit Corridor (IRTC) and the protection of World Food Programme vessels on behalf of EUNAVFOR. Contact details for both these organisations are provided at Annex B.

3.4 Best Management Practice (BMP) 4, published by Witherby Seamanship International (ISBN 978 1 85609 505 1) and available from UKMTO Dubai, provides advice to masters and operators on methods to deter piracy and protect vessels against attack. Vessels are encouraged to implement BMP 4 and also to participate in voluntary reporting schemes and other dialogues with military authorities in the area through the MTIC.

3.5 The World-Wide Navigation Warning Service (WWNWS) may be used to alert vessels to an area of risk through the promulgation of a Navigation Warning.

## 4. PASSAGE REPORTING

4.1 During periods of tension or conflict and to assist UK authorities to determine the whereabouts of merchant vessels within a specific area of operations, vessels may be asked to pass information voluntarily using the passage report format at Annex A. In return, vessels will receive advice on the security status within the area.

4.2 The initiation of the passage report procedure will be by the promulgation of the following message, disseminated as a Navigation Warning:

Authority: United Kingdom Hydrographic Office

**SPECIAL NOTICE TO MERCHANT VESSELS – A risk to merchant vessels exists in [area]. Vessels within, or intending to enter this area should contact their owners or national shipping authorities. Merchant vessels are encouraged to submit a report in accordance with ADMIRALTY Annual Notice to Mariners 3 Annex A to [contact details of military authority] when passing [lat/long] and subsequent daily position report requirements if any.**

*Note: The text of the Special Notice to merchant vessels message issued by the UK will be amended to reflect the prevailing circumstances.*

## 5. ADDITIONAL SERVICES

5.1 The MTIC provides the primary liaison between military authorities and merchant vessels. This dialogue is supported by the UKHO range of Maritime Security Charts (the Q series of charts) and Security Related Information to Mariners (SRIM) which provides further details of High Risk Areas, Exclusion Zones, Voluntary Reporting Schemes and other advice.

5.2 Further details, including the UKHO range of Maritime Security Charts is available to order or download at the following webpage: <http://www.ukho.gov.uk/security>

**ANNEX A TO UK ANNUAL NOTICES TO MARINERS No. 3  
MERCHANT VESSEL VOLUNTARY REPORTING SCHEME**

During periods of tension or conflict and to assist UK authorities to determine the whereabouts of merchant vessels in a specific Area of Operations, vessels may be asked to pass information voluntarily using the passage report below. In return vessels will receive advice on the security status within the region.

**PASSAGE REPORT FORMAT (FORMAT ALPHA)**

**When sending a Passage Report to UK, NATO or EUNAVFOR Military authorities, the content and format is as follows, unless requested otherwise**

1. The initial report should contain the following:
  1. Vessel's name
  2. Flag
  3. Callsign and IMO number
  4. Inmarsat Telephone Number
  5. Time and position
  6. Course
  7. Passage speed
  8. Freeboard and Draft
  9. Cargo
  10. Destination and ETA
  11. Name and Contact Details of Company Security Officer
  12. Nationality and number of Master and Crew.
  
2. Subsequently vessels are requested to report the following daily at noon:
  1. Vessel's name
  2. Callsign and IMO number
  3. Time and position
  4. Course and speed
  5. Any other important information.
  
3. All timings are requested in UTC and the preferred method of communication is e-mail.
  
4. All information provided is treated in strictest commercial confidence.

**ANNEX B TO UK ANNUAL NOTICES TO MARINERS No. 3****CONTACT DETAILS FOR MILITARY OPERATIONS****Maritime Trade Information Centre (MTIC) / UKTMO Dubai:**

Tel: 00 971 50 552 3215 or +44 2392 212 193  
e-mail: ukmto@eim.ae

**NATO Shipping Centre (NSC):**

Tel: +44 1923 956 574  
Fax: +44 1923 956 575  
e-mail: info@shipping.nato.int  
NSC Website: <http://www.shipping.nato.int>

**European Union Naval Force (EUNAVFOR)/ MSCHOA:**

MSCHOA website: <http://www.mschoa.org>  
EUNAVFOR: <http://www.eunavfor.eu>