

NEW ZEALAND NOTICES TO MARINERS

Notices NZ 42 – 52

© Crown Copyright 2015. All rights Reserved. Permission is not required to make analogue copies of these Notices but such copies are not to be sold.

CONTENTS

- I [Explanatory Notes.](#)
 - II [New Zealand Notices to Mariners.](#)
 - III [Corrections to New Zealand Light List.](#)
 - IV [Corrections to Sailing Directions and New Zealand Publications.](#)
 - V [Navigational Warnings.](#)
 - VI [Corrections to Admiralty List of Radio Signals.](#)
-

New Zealand Notices to Mariners are the authority for correcting New Zealand charts within the New Zealand area of charting responsibility as shown in [Annual Notice No. 1](#).

Mariners are requested to immediately inform New Zealand Hydrographic Authority, Land Information New Zealand, 155 The Terrace, PO Box 5501, Wellington 6145, New Zealand, Phone: 0800 665 463 or +64 (0)4 460 0110, Fax: +64 (0)4 460 0161, email: ntm@linz.govt.nz, of the discovery of new or suspected dangers to navigation, or shortcomings in charts and publications. A copy of a Hydrographic Note, a convenient form on which to send such information, is included at the end of Section VI of the Fortnightly Notices to Mariners.

Changes or defects in aids to navigation should be reported to the Rescue Coordination Centre New Zealand (RCCNZ) via the nearest New Zealand Coastal Maritime Radio Station Phone: +64 (0)4 577 8030, Fax: +64 (0)4 577 8038 or +64 (0)4 577 8041, email: rccnz@maritimenz.govt.nz.

Copies of these Notices can be obtained from Land Information New Zealand, Maritime New Zealand, Principal Chart Agents at the major ports of New Zealand and the Internet: www.linz.govt.nz.

EXPLANATORY NOTES

Charts. The notices in Section II give instructions for the correction of charts. Geographical positions refer to the largest scale chart unless otherwise stated. They are normally given in degrees, minutes and decimals of a minute, but may occasionally quote seconds for convenience when plotting from the graduation of some older-style charts. Bearings are true reckoned clockwise from 000° to 359°; those relating to lights are given as seen by an observer from seaward. Symbols referred to are those shown in publication Chart 5011 (*INT 1*) Symbols and Abbreviations used on Admiralty Paper Charts, published by the United Kingdom Hydrographic Office.

Alterations to depth contours, deletion of depths to make way for new detail, etc. are not mentioned unless they have some navigational significance.

Block corrections or notes accompanying notices in Section II are placed after Section VI.

Temporary and Preliminary Notices. These are indicated by (T) or (P) after the notice number. A list of [\(T\) and \(P\) Notices in force](#) is published on the LINZ website and in the fortnightly Editions of Notices to Mariners. Charts are not corrected for them before issue; they should be corrected in pencil on receipt.

Light Lists. The detailed correction to the Light List is given in Section III and may not be published in the same edition as the chart correcting notice. The entire entry for each light is printed, and an asterisk (*) is shown under the column which contains an amendment. In the case of a new light, an asterisk (*) appears under all the columns. New and extensively altered entries are intended to be pasted in. It is recommended that a manuscript entry be made for all shorter corrections.

It is emphasized that the [List of Lights](#) is the authority for lights and that many alterations, especially those of a temporary but operational nature, may only be promulgated as corrections to the List of Lights.

Sailing Directions. Corrections to Sailing Directions are given in Section IV. It is recommended that such corrections be kept together in a file with the latest list of those in force on top. The file can then be consulted when using the Current Edition of the book to see if any notices affecting the area under consideration are extant. Corrections should not be pasted into the Current Edition of the book or Supplement.

New Zealand Publications. Corrections to New Zealand Publications are given in Section IV.

Navigational Warnings. NAVAREA XIV and NZ Coastal Navigational Warnings that are in force at the time of publication are given in Section V.

Radio Signals. When radio signals are affected by a notice the Admiralty List of Radio Signals reference number is quoted. The detailed correction to the List of Radio Signals is given in Section VI and may be published in a later edition than the chart correcting notice. It is recommended that such corrections be kept together in a file with the latest list of those in force on top. Corrections should not be pasted into the Current Edition of the book.

Correction of Charts and Publications by the User. New Zealand Notices to Mariners contain important information and should be used to keep the specified charts and books up to date.

THE USE OF CHARTS AND ASSOCIATED PUBLICATIONS

Reliance on Charts and Associated Publications. While every effort is made to ensure the accuracy of the information on New Zealand charts and other publications, it should be appreciated that it may not always be complete and up to date. The mariner must be the final judge of the reliance to be placed on the information given, bearing in mind their particular circumstances, local pilotage guidance and the judicious use of available navigational aids.

Charts. Charts should be used with prudence: there are areas where the source data are old, incomplete or of poor quality. The mariner should use the largest scale appropriate for his particular purpose; apart from being the most detailed, the larger scales are usually corrected first. When extensive new information (such as a new hydrographic survey) is received, some months may elapse before it can be fully incorporated in published charts. On small scale charts of ocean areas where hydrographic information is, in many cases, still sparse, charted shoals may be in error as regards position, least depth and extent. Undiscovered dangers may exist, particularly away from well-established routes.

Further guidance. The Mariner's Handbook (NP 100) gives a fuller explanation of the limitations of charts. All users should study it in their own interest.

ENC/ECDIS Data Presentation and Performance Check in Ships. The International Maritime Organization (IMO) has recently indicated its concerns about operating anomalies identified in some ECDIS that fail to display important new chart features.

The International Hydrographic Organization (IHO) has produced an ENC Data Presentation and Performance Check dataset that allows mariners to check their ECDIS. The check dataset is available through ENC service providers and from the IHO website (www.iho.int) which includes instructions.

Mariners are strongly recommended to use the dataset and report the results of their checks to help the IHO identify how the different brands of ECDIS display and handle chart information. Mariners are asked to also inform the IMO, national Hydrographic Offices, ECDIS manufacturers and others, so that they can take any corrective action that may be necessary.

In order to present the most comprehensive report possible to the IMO and to further assist in resolving the issues so far identified, the IHO is keen that as many ships as possible forward their results. Reports on the results can be sent via a form provided with the data or the results can be submitted on-line through a web-form.

All relevant documentation can be downloaded free from the IHO website at: www.iho.int.

II

NUMERICAL INDEX OF CHARTS AFFECTED
(NZ NTM Edition No. 4 dated 20 February 2015)

NZ Chart No.	INT Chart No.	ENC No.	Notice to Mariners
NZ 21	(INT 641)		47(T)
NZ 23	(INT 640)	NZ200023	47(T)
NZ 24			48(T)
NZ 25	(INT 648)		47(T), 48(T)
NZ 29			48(T)
NZ 43			47(T)
NZ 45		NZ300045	47(T)
NZ 48			47(T)
NZ 68		NZ300068	48(T)
NZ 82 (T82)		NZ300082	52(T)
NZ 286			50(T)
NZ 443		NZ300443	47(T)
NZ 463			42
NZ 822 (T 822)			45
NZ 2862			50(T)
NZ 5315			44
NZ 5571		NZ405571	46(T)
NZ 7142		NZ407142	49(T)
NZ 14060	(INT 60)		47(T), 48(T)
NZ 14061	(INT 61)		47(T), 48(T)
NZ 14065	(INT 65)		48(T)
NZ 14600	(INT 600)	NZ14600E	47(T), 48(T)
NZ 14601	(INT 601)		47(T), 48(T)
NZ 14605	(INT 605)	NZ14605W	52(T)
NZ 14631	(INT 631)	NZ214631	52(T)
NZ 14638	(INT 638)		51(T), 52(T)
		NZ200025	48(T)
		NZ505315	43
		NZ505571	46(T)
		NZ507142	49(T)

II

NEW ZEALAND TEMPORARY AND PRELIMINARY NOTICES IN FORCE

(NZ NTM Edition No. 4 dated 20 February 2015)

NZ Notice	T/P	Charts Affected	Locality and Subject
		NZ Chart, ENC Cell	
194/04	P	NZ 46, NZ 48, NZ 61, NZ 463, NZ 614, NZ 6151, NZ 6152, NZ 6153, NZ 6154	Marlborough Sounds: Use of Automated Navigation Systems
242/09	P	NZ 42, NZ 4265	Kaipara Hr. Entrance: Depths
222/10	P	NZ 542	Whakatane: Depths
20/11	P	NZ 5411, NZ5412, NZ405411, NZ505412	Tauranga Hr.: Lights
202/11	P	NZ 6142, NZ606142	Port Nelson: Light, Beacon, Works in Progress
211/12	P	NZ 61, NZ 614, NZ300061, NZ300614, NZ506141	North Coast, Golden Bay & Tasman Bay: Lights
85/13	P	NZ 541, NZ 5411, NZ 5412, NZ 5413, NZ300541, NZ405411, NZ505412	East Coast, Tauranga, Port of Tauranga: Works
140/13	P	NZ 5314	East Coast, Mercury Islands, Rocky Bay, Coralie Bay, Orauaki Point, Te Whanga Bay, Korapuki Islands: Rocks
147/13	P	NZ 521, NZ300521	East Coast, Poor Knights Islands: Depths
156/13	P	NZ 541, NZ 5413, NZ300541, NZ405413	East Coast, Tauranga, Motiti Island: Depths
169/13	P	NZ 5411, NZ405411	East Coast, Tauranga Harbour, Katikati Entrance: Buoy
172/13	P	NZ 6152	North Coast, Havelock: Lights, Beacons
194/13	P	NZ 5124	East Coast, Bay of Islands, Kerikeri Inlet: Light Beacons
220/13	T	NZ 5612, NZ505612, NZ605612	East Coast, Napier Inner Harbour and Approaches: Dredging
221/13	P	NZ 4265	West Coast, Kaipara Harbour: Lights, Beacons, Buoys
242/13	T	NZ 53, NZ 532, NZ 5321, NZ 5324, NZ305322, NZ405321	East Coast, Auckland, Rakino Island: Light Unlit
41/14	P	NZ 268	Chatham Islands: Depths and Rocks
42/14	P	NZ 26, NZ 27, NZ 268	Chatham Islands: Areas to be avoided
45/14	P	NZ 632, NZ 6324, NZ406324	East Coast, Akaroa Harbour: Area of Restricted Access
132/14	T	NZ 6321, NZ506321, NZ606321	East Coast, Lyttelton Harbour: Light, Beacon
138/14	T	NZ 23 (INT 640), NZ 26, NZ 55, NZ 56, NZ 14600 (INT 600), NZ200023, NZ300055, NZ300056, NZ14600E	East Coast, Poverty Bay, Eastwards: Scientific Instruments
139/14	P	NZ 5612	East Coast, Approaches to Napier: Light Sectors
140/14	T	NZ 23 (INT 640), NZ 26, NZ 58, NZ 14600 (INT 600), NZ200023, NZ300058, NZ14600E	East Coast, Honeycomb Southeastwards: Scientific Instruments
141/14	T	NZ 23 (INT 640), NZ 25 (INT 648), NZ 45, NZ 48, NZ200023, NZ300045	West Coast, South Taranaki Bight: Seabed Obstructions
156/14	P	NZ 82 (T 82), NZ 8238 (T 8238), NZ 8247 (T 8247), NZ 8248 (T 8248), NZ8259 (T 8259), NZ300082, NZ508238, NZ608238	Kingdom of Tonga, Ha'apai Group: Navigation Aids
171/14	P	NZ 521, NZ300521	East Coast, Whangarei Harbour: Directional light
210/14	P	NZ 8215, NZ508215	Kingdom of Tonga, Niuatoputapu: Navigation Aids
211/14	P	NZ 82 (T 82), NZ 827 (T 827), NZ 8275 (T 8275), NZ 8277 (T 8277), NZ300827, NZ408275, NZ508277	Kingdom of Tonga, Tongatapu: Navigation Aids
213/14	T	NZ 8655, NZ508655	Samoa, Approaches to Apia Harbour: Buoys
218/14	T	NZ 4315, NZ504315, NZ604315	West Coast, Onehunga Wharf: Berth Depths
224/14	P	NZ 6422, NZ406422, NZ506422	East Coast, Timaru Harbour: Works, Exclusion Zone and Buoy
238/14	P	NZ 822 (T 822), NZ 8225 (T 8225), NZ400822, NZ508225	Kingdom of Tonga, Vava'u Group, Neiafu Harbour: Prohibited Area
239/14	T	NZ 521, NZ5215, NZ300521, NZ505215	East Coast, Whangarei Harbour: Works
243/14	P	NZ 5113	East Coast, Houhora & Rangaunu Harbour: Aids to Navigation
245/14	P	NZ 531, NZ 534, NZ 5318, NZ300531	East Coast, Mercury Islands, Mercury Bay: Depths, Rocks
246/14	T	NZ 61, NZ 614, NZ 6144, NZ300614, NZ406144	North Coast, Tasman Bay and Golden Bay: Spat Catching Areas
249/14	T	NZ 5321, NZ 5322, NZ405321, NZ505322	East Coast, Auckland Harbour, Takapuna Beach: Research Buoy
251/14	T	NZ 54, NZ 541, NZ 542, NZ 5413, NZ300541, NZ405413	East Coast, Tauranga, Astrolabe Reef: Exclusion Zone and Waverider Buoy
261/14	T	NZ 522, NZ 532, NZ 5227, NZ305322	East Coast, Kawau Bay, Matakana River: Works in Progress
262/14	T	NZ 23 (INT 640), NZ 25 (INT 648), NZ 45, NZ 48, NZ200023, NZ300045	West Coast, South Taranaki Bight: Drilling Operations
263/14	P	NZ 62, NZ 63, NZ 6212, NZ300062, NZ462122	East Coast, Kaikoura: Marine Reserve

II

NZ Notice	T/P	Charts Affected	Locality and Subject
		NZ Chart, ENC Cell	
264/14	P	NZ 63, NZ 64, NZ 632, NZ 6324, NZ300063, NZ406324	East Coast, Banks Peninsula, Akaroa Harbour: Marine Reserve
270/14	P	NZ 561, NZ 5612, NZ400561, NZ505612	East Coast, Whirinaki Eastwards: Buoy
271/14	P	NZ 46, NZ 463, NZ300463	South Coast, Wellington: Rock, Wreck
273/14	P	NZ 46, NZ 463, NZ300463	South Coast, Pencarrow Head: Light
274/14	T	NZ 4314, NZ404314	West Coast, Manukau Harbour Entrance: Depths
275/14	P	NZ 8655, NZ508655	Samoa, Apia Harbour: Buoys and Breakwater
22/15	P	NZ 45, NZ 48, NZ300045	West Coast, Cape Egmont Westwards: Protected Area
23/15	T	NZ 21 (INT 641), NZ 23 (INT 640), NZ 25 (INT 648), NZ 43, NZ 48, NZ 14060 (INT 60), NZ 14061 (INT 61), NZ 14600 (INT 600), NZ 14601 (INT 601), NZ14600E, NZ200023, NZ300043	West Coast, North Taranaki Bight Westwards: Seismic Survey
24/15	P	NZ 82 (T 82), NZ 822 (T 822), NZ 8225 (T 8225), NZ300082, NZ400822, NZ508225	Kingdom of Tonga, Vava'u Group: Navigation Aids
27/15	T		Maritime Safety Broadcasts
28/15	T	NZ 21 (INT 641), NZ 23 (INT 640), NZ 41, NZ 42, NZ 43, NZ 443, NZ 4111, NZ 14061 (INT 61), NZ 14600 (INT 600), NZ 14601 (INT 601), NZ 14602 (INT 602), NZ 14605 (INT 605), NZ14600E, NZ200021, NZ300023, NZ300041, NZ300042, NZ300043, NZ300443	West Coast: Seismic Survey
29/15	T	NZ 632, NZ 6321, NZ400632, NZ506321, NZ606321	East Coast, Lyttelton Harbour, Sticking Point Eastwards: Exclusion Zone
30/15	T	NZ 25 (INT 648), NZ 64, NZ 14600 (INT 600), NZ 14601 (INT 601), NZ14600E, NZ200025, NZ300064	East Coast, Otago Peninsula Eastwards: Seismic Survey
37/15	T	NZ 21 (INT 641), NZ 23 (INT 640), NZ 25 (INT 648), NZ 43, NZ 45, NZ 48, NZ 443, NZ 14060 (INT 60), NZ 14061 (INT 61), NZ 14600 (INT 600), NZ 14601 (INT 601), NZ14600E, NZ200023, NZ300443	Cape Egmont, Westwards: Seismic Survey
38/15	T	NZ 615, NZ 6151, NZ 6152, NZ300615	North Coast, Marlborough Sounds, Port Ligar, Forsyth Bay, Beatrix Bay: Scientific Instruments
40/15	T	NZ 6142, NZ606142	North Coast, Port Nelson: Lights, Beacons.
47/15	T	NZ 21 (INT 641), NZ 23 (INT 640), NZ 25 (INT 648), NZ 43, NZ 45, NZ 48, NZ 443, NZ 14060 (INT 60), NZ 14061 (INT 61), NZ 14600 (INT 600), NZ 14601 (INT 601), NZ14600E, NZ200023, NZ300045, NZ300443	West Coast, Cape Egmont Westwards: Subsea Construction
48/15	T	NZ 24, NZ 25 (INT 648), NZ 29, NZ 68, NZ 14060 (INT 60), NZ 14061 (INT 61), NZ 14065 (INT 65), NZ 14600 (INT 600), NZ 14601 (INT 601), NZ14600E, NZ200025, NZ300068	South Island, Nugget Point Southward: Seismic Survey
49/15	T	NZ 7142, NZ407142, NZ507142	West Coast, Greymouth Harbour: Depths
50/15	T	NZ 286, NZ 2862	Auckland Islands: Scientific Instruments
51/15	T	NZ 14638 (INT 638)	Fiji, Viti Levu, Vanua Levu & Southern Lau Group: Lights
52/15	T	NZ 82 (T 82), NZ 14605 (INT 605), NZ 14631 (INT 631), NZ 14638 (INT 638), NZ14605W, NZ214631, NZ300082	Kingdom of Tonga, Hunga Ha'apai Southeastwards: Volcanic Activity

NZ 42/15 NEW ZEALAND PUBLICATIONS – Paper Charts.

New Edition to be Published Shortly.

Chart No. Title

NZ 463 Approaches to Wellington

New Zealand Hydrographic Authority
NI 27/2015

NZ 43/15 NEW ZEALAND PUBLICATIONS – Electronic Navigational Charts.

New ENC to be Published Shortly.

ENC Cell Title

NZ505315 NZ505315 - NZ5315 - North Island – East Coast – Mercury Bay

New Zealand Hydrographic Authority
NI 29/2015

**NZ 44/15 NEW ZEALAND – North Island – East Coast – Mercury Bay – Cooks Bluff to Te Karaka Island
– Depths, Rocks, Sources, Tidal Levels.**

Former notice – NZ 244(P)/14 is cancelled.

Chart NZ 5315 [259/14]

Insert the accompanying block showing changes to depths and rocks
centred on: 36° 49'.79S., 175° 47'.41E.

Replace the existing Source Data Diagram with the accompanying block below chart title

Replace the existing Tidal Levels Table with the accompanying block right of chart title

New Zealand Hydrographic Authority
NI 289/2014

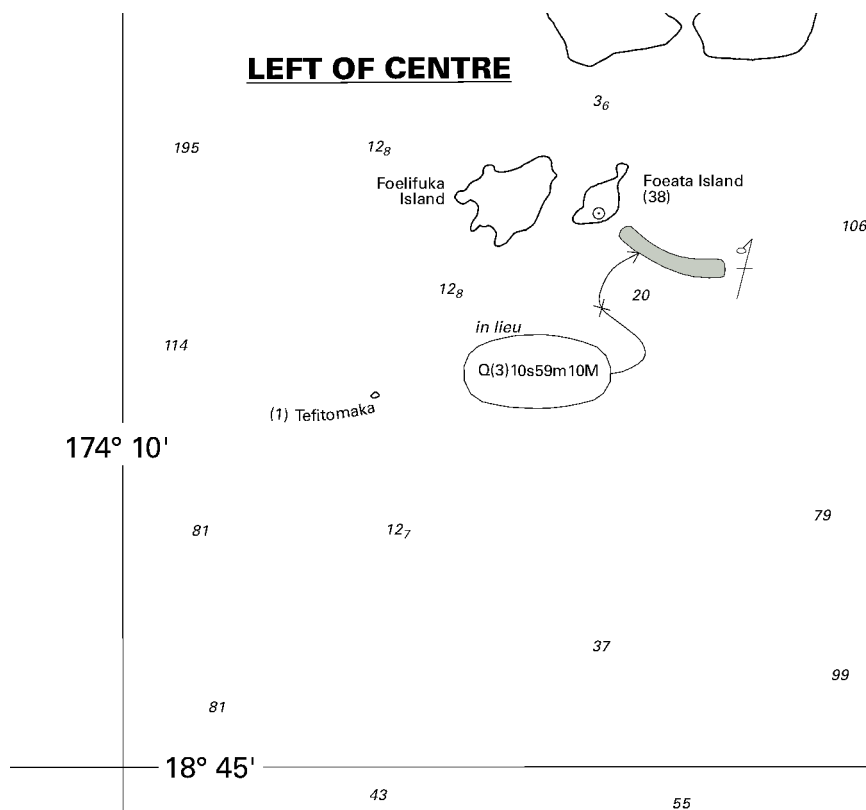
NZ 45/15 SOUTH PACIFIC OCEAN – Kingdom of Tonga – Vava’u Group – Foedata Island – Light.

Chart NZ 822 (T 822) [NE 04/11]

Amend light to Q(3)10s59m10M

18° 43'.02S., 174° 08'.21W.

New Zealand Hydrographic Authority
BA light List (Volume K): 4624
NI 28/2015



<i>Issued as a guide to chart correction.</i>		<i>Use in conjunction with the appropriate NZ Notice to Mariners.</i>
LAST CORRECTION	NZ NTM No.	CHART No.
NE 04/11	NZ 45/15	NZ 822 (T 822)

**NZ 46(T)/15 NEW ZEALAND – North Island – East Coast – Poverty Bay – Gisborne – Scientific
Instruments Recovered.**

Former notice – NZ 196(T)/14 is cancelled.

Cancel this notice on receipt.

Charts formerly affected: NZ 5571, NZ405571, NZ505571

Eastland Port Ltd.
NI 37/2015

NZ 47(T)/15 NEW ZEALAND – North Island – West Coast – Cape Egmont Westwards – Subsea Construction.

1. From 20 February subsea construction will be undertaken by MV *Skandi Singapore* (call sign LAEQ7) in the area bounded by coordinates in paragraph 4.2.
2. MV *Skandi Singapore* will be restricted in its ability to manoeuvre. All vessels are requested to pass at least 500m from the vessel and associated equipment.
3. MV *Skandi Singapore* will be maintaining a listening watch on VHF channel 16.

Non-interference Zone

4. Pursuant to section 101B of the Crown Minerals Act 1991, the Chief Executive of the Ministry of Business, Innovation and Employment hereby gives notice of a non-interference zone in relation to the MV *Skandi Singapore* in Petroleum Mining Permit PEP 38158.

4.1 The non-interference zone relates to the following activities:

- a) Installation of a gas lift manifold.
- b) Installation of a Subsea Distribution Unit (SDU).
- c) Installation of an umbilical termination assemble.
- d) Installation of a production flow line linking Pateke-4H production with the existing Pateke-3H flow line.
- e) Installation of an integrated umbilical comprising of a gas lift line and electrical and hydraulic lines, between the subsea distribution unit (SDU) and Pateke-4H.
- f) Installation of a gas lift jumper line installed between the gas lift manifold and SDU.
- g) Installation of a gas lift jumper line installed between the gas lift manifold and Pateke-3H.
- h) Inspection of the FPSO *Umuroa* and pipelines.

4.2 The locality of the activities is bounded by the following positions:

- a) 39° 19'.80S., 173° 17'.40E.
- b) 39° 26'.90S., 173° 17'.40E.
- c) 39° 26'.90S., 173° 08'.10E.
- d) 39° 19'.80S., 173° 08'.10E.

4.3 The area of the non-interference zone is 500m from any point on the outer edge of the MV *Skandi Singapore* and from any point on the outer edge of the equipment attached to the MV *Skandi Singapore* that is involved with any activity as set out above.

4.4 This notice has effect from 20 February 2015 to 1 May 2015 (both days inclusive).

4.5 Refer to Annual New Zealand Notices to Mariners, No.16A, which can be found in the New Zealand Nautical Almanac (NZ 204) and on the LINZ website www.linz.govt.nz.

Charts temporarily affected: NZ 21 (INT 641), NZ 23 (INT 640), NZ 25 (INT 648), NZ 43, NZ 45, NZ 48, NZ 443, NZ 14060 (INT 60), NZ 14061 (INT 61), NZ 14600 (INT 600), NZ 14601 (INT 601), NZ14600E, NZ200023, NZ300045, NZ300443

MV *Skandi Singapore*

Chief Executive of the Ministry of Business, Innovation and Employment (in respect of the Non-interference Zone)

NI 34/2015

NZ 48(T)/15 NEW ZEALAND – South Island – Nugget Point Southward – Seismic Survey.

1. Upon completion of activities outlined in NZ 23(T)/15 and/or 37(T)/15, MV *Polar Duke* (call sign 5BJL2) will conduct seismic survey activities in the area bounded by the coordinates given in paragraph 5.2 below.
2. MV *Polar Duke* will be deploying 12 streamers in an array 4.4NM long, 0.8NM wide, marked by lit tailbuoys and is restricted in its ability to manoeuvre. All vessels are requested to pass at least 6NM from the vessel and towed equipment.
3. Support vessels MV *Guru* (call sign VJN4499) and MV *Sanco Sky* (call sign ZDHW8) will be in attendance.
4. All vessels will maintain a listening watch on VHF channel 16.

Non-interference Zone

5. Pursuant to section 101B of the Crown Minerals Act 1991, the Chief Executive of the Ministry of Business, Innovation and Employment hereby gives notice of a non-interference zone in relation to the MV *Polar Duke* in Petroleum Exploration Permit PEP 55794.

5.1 The non-interference zone relates to the following activities:

- i) Acquiring seismic data within the permit and relevant authorisation under section 42A of the Crown Minerals Act 1991,
- j) Turning the ship (including turning outside the permit area and section 42A authorisation while not acquiring seismic data),
- k) Refueling by a support ship that occurs within the area given in 5.2 (including the permit area and any authorisation under section 42A of the Crown Minerals Act 1991), and
- l) Repairs to the equipment by a support ship that occurs within the area given in 5.2 (including the permit area and any authorisation under section 42A of the Crown Minerals Act 1991).

5.2 The locality of the activities is bounded by the following positions:

- e) 47° 22'.07S., 169° 34'.54E.
- f) 47° 50'.43S., 170° 44'.09E.
- g) 48° 18'.09S., 170° 18'.02E.
- h) 48° 09'.24S., 169° 57'.24E.
- i) 48° 34'.57S., 169° 34'.36E.
- j) 48° 23'.07S., 169° 06'.13E.
- k) 48° 02'.15S., 169° 25'.42E.
- l) 47° 53'.44S., 169° 05'.27E.

5.3 The area of the non-interference zone is 500m from any point on the outer edge of the MV *Polar Duke* and from any point on the outer edge of the equipment attached to the MV *Polar Duke* that is involved with any activity as set out above.

5.4 This notice has effect from 20 February 2015 to 19 May 2015 (both days inclusive).

5.5 Refer to Annual New Zealand Notices to Mariners, No.16A, which can be found in the New Zealand Nautical Almanac (NZ 204) and on the LINZ website www.linz.govt.nz.

Charts temporarily affected: NZ 24, NZ 25 (INT 648), NZ 29, NZ 68, NZ 14060 (INT 60), NZ 14061 (INT 61), NZ 14065 (INT 65), NZ 14600 (INT 600), NZ 14601 (INT 601), NZ14600E, NZ200025, NZ300068

MV *Polar Duke*

Chief Executive of the Ministry of Business, Innovation and Employment (in respect of the Non-interference Zone)
NI 33/2015

NZ 49(T)/15 NEW ZEALAND – South Island – West Coast – Greymouth Harbour – Depths.

Former notice – NZ 265(T)/14 is cancelled.

- * 1. A recent survey (10 Feb 2015) indicates the following depths below CD on the bar at the Grey River entrance:

North Transit Lead	3.2m	42° 26'.361S., 171° 11'.458E.
Central Transit Lead	4.0m	42° 26'.347S., 171° 11'.405E.
South Transit Lead	3.5m	42° 26'.300S., 171° 11'.294E.

- * 2. Reported obstruction (10 Feb 2015) 1.5m depth in approximate position 42° 26'.356S., 171° 11'.344E.

- 3. Mariners should be aware that depths in Greymouth Harbour entrance are constantly changing and should contact the Harbourmaster for the latest conditions on (027) 435 3424 or (03) 768 5666 or Greymouth Harbour Radio Ch14.

* *Indicates new or revised entry*

Charts temporarily affected: NZ 7142, NZ407142, NZ507142

Port of Greymouth
NI 38/2015

NZ 50(T)/15 NEW ZEALAND – Southern Ocean – Auckland Islands – Scientific Instruments.

1. A seabed current meter marked by a large orange float has been deployed in the following position until April 2015:

50° 30'.75S., 166° 18'.80E. (Port Ross)

2. Seabed tide gauge equipment marked by orange and white floats have been deployed in the following positions until April 2015:

- a) 50° 32'.32S., 166° 16'.46E. (Ranui Cove)
- b) 50° 36'.13S., 166° 12'.64E. (Haskell Bay)
- c) 50° 42'.18S., 166° 07'.93E. (Smith Harbour)
- d) 50° 49'.06S., 166° 12'.37E. (Waterfall Inlet)
- e) 50° 49'.76S., 166° 02'.66E. (Flagstaff Point)
- f) 50° 49'.67S., 165° 55'.72E. (Western Harbour)

3. Mariners are advised to exercise caution when navigating in the area.

Charts temporarily affected: NZ 286, NZ 2862

IX Survey Australia PTY LTD.
NI 32/2015

NZ 51(T)/15 SOUTH PACIFIC OCEAN – Fiji – Viti Levu, Vanua Levu & Southern Lau Group – Lights.

Former notice – NZ 41(T)/15 is cancelled.

1. The following lights are reported as unlit:

a) Vatulele Island NW side	18° 30'.48S., 177° 36'.46E.
b) Beqa South West Reef	18° 30'.89S., 177° 58'.77E.
c) Vatu-i-ra Channel West light	17° 16'.70S., 178° 28'.92E.
d) Naqelelevu Island. East End	16° 05'.40S., 179° 08'.80W.
e) Totoya Island. South West Point	19° 00'.00S., 179° 52'.00W.
f) Vatoa Island	19° 48'.44S., 178° 14'.45W.
g) Cakau Momo	17° 38'.08S., 179° 14'.64E.

* 2. Mariners are advised to exercise caution when navigating in the area.

* *Indicates new or revised entry*

Chart temporarily affected: NZ 14638 (INT 638)

Maritime Safety Authority of Fiji
BA Light List (Volume K): 4661, 4695, 4717, 4733, 4756, 4758, 4759
NI 35/2015

NZ 52(T)/15 SOUTH WEST PACIFIC – Kingdom of Tonga – Hunga Ha’apai Southeastwards & Vava’u Southwestwards – Volcanic Activity.

Former notice – NZ 31(T)/15 is cancelled.

- * 1. Volcanic activity reported in the vicinity of the following positions:
 - a) 20° 34’S., 175° 22’W.
 - b) 19° 00’S., 174° 47’W.
- * 2. Discoloured water, floating pumice and a 3.7km altitude gas plume has been reported in the vicinity of (a) above.
- * 3. Mariners are requested to exercise caution when navigating in both areas.

* *Indicates new or revised entry*

Charts temporarily affected: NZ 82 (T 82), NZ 14605 (INT 605), NZ 14631 (INT 631), NZ 14638 (INT 638), NZ14605W, NZ214631, NZ300082

Ministry of Infrastructure Tonga
NI 36/2015

III

CORRECTIONS TO NEW ZEALAND LIGHT LIST

(NZ NTM Edition No. 4 dated 20 February 2015)

Nil

IV

CORRECTIONS TO SAILING DIRECTIONS AND NEW ZEALAND PUBLICATIONS

(NZ NTM Edition No. 4 dated 20 February 2015)

NP14 Australia Pilot Volume 2 (2013 Edition)

New South Wales – Sydney Harbour — Directions; leading lights

349

Paragraph 12.193 4 lines 1-6 *Replace by:*

- 4 The track then leads in mid-channel, for a farther distance of about 7½ miles, to Parramatta. The sides of the channel are marked by light beacons and light buoys (lateral) and lights.

AA784011
(SDD 2015000 005134)

[06/15]

NP61 Pacific Islands Pilot Volume 2 (2011 Edition)

Nouvelle-Calédonie – East Coast – Baie de Poro — Anchorage

137

Paragraph 4.134 2 lines 1-5 *Replace by:*

- 2 An anchorage (21°17'·26S 165°44'·37E) in 30 m, has been established for ore carriers loading nickel ore from lighters.

French Notice 03/15 03 206/2015
(SDD 2015000 010460)

[06/15]

NP15 Australia Pilot Volume 3 (2012 Edition)

East Coast – Cape Weymouth — Kemp Rocks buoy

353

Paragraph 11.91 4 lines 1-5 *Replace by:*

- 4 ENE of Kemp Rocks, two pinnacles marked by an E cardinal buoy (12°26'·30S 143°21'·69E), thence:

AMSA ATH 2014/508 56,57,58
(SDD 2015000 005155)

[06/15]

(NI 31/2015)

V

NAVIGATIONAL WARNINGS *Warnings in force 18 February 2015*

NAVAREA XIV *(South West Pacific)*

- 96/14 FM NAVAREA XIV COORDINATOR 092000 UTC DEC 14
NAVAREA XIV 96/14
SOUTHERN OCEAN
VOLUNTARY SHIP REPORTING SYSTEM IN THE NEW ZEALAND SEARCH AND RESCUE
AREA SOUTH OF 60-00S
1. THE NEW ZEALAND SEARCH AND RESCUE AUTHORITIES HAVE ESTABLISHED A
VOLUNTARY SHIP REPORTING SYSTEM FOR ALL VESSELS OPERATING IN THE NZSAR
REGION SOUTH OF 60-00S FOR THE PURPOSES OF ASSISTING THE SAR AUTHORITY IN
COORDINATING SAR OPERATIONS IN THAT AREA.
2. AREA COVERED: 60-00S TO THE SOUTHERN EDGE OF THE ROSS SEA BOUNDED BY
163-00E TO 131-00W.
3. ALL VESSELS ARE REQUESTED TO NOTIFY TAUPO MARITIME RADIO ON ENTRY AND
DEPARTURE INTO THE AREA AND ARE ALSO ENCOURAGED TO MAKE DAILY POSITION
REPORTS. INFORMATION PROVIDED WILL BE USED FOR SAR PURPOSES ONLY.
4. TAUPO MARITIME RADIO CAN BE CONTACTED ON INMARSAT C 582 451 200 067, HF,
EMAIL MARITIME@KORDIA.CO.NZ OR 00 64 4 550 5280.
- 13/15 FM NAVAREA XIV COORDINATOR 100400 UTC FEB 15
NAVAREA XIV 13/15
SOUTH PACIFIC OCEAN
TONGA
HOME REEF
CHART NZ 82 (T 82)
1. VOLCANIC ACTIVITY REPORTED IN VICINITY 19-00S 174-47W.
2. MARINERS ARE ADVISED GAS MAY BE PRESENT AT THE SEA SURFACE
AND TO KEEP WATCH FOR DISCOLOURED WATER.
- 18/15 FM NAVAREA XIV COORDINATOR 162100 UTC FEB 15
NAVAREA XIV 18/15
SOUTH PACIFIC OCEAN
AVON ISLAND WESTWARDS TO AITUTAKI
1. UNDERWATER OPERATIONS BY VESSEL L'ATALANTE
BETWEEN 19 FEB AND 3 APR 15 ALONG TRACKLINE JOINING:
A: 19-00S 155-00E
B: 19-00S 176-19E
C: 19-00S 160-06W
2. CANCEL THIS MESSAGE 040100 UTC APR 15.
-

V

NZ Coastal Navigational Warnings

(Area Z)

- 09/15 FM: RCC NEW ZEALAND 200045 UTC JAN 15
COASTAL NAVIGATION WARNING 9/15
AREA RAGLAN
SEMI SUBMERSIBLE RIG KAN TAN IV ANCHORED IN POSITION
38-53.50S 173-55.60E. ALL VESSELS ARE ADVISED TO KEEP
AT LEAST 2 NAUTICAL MILES FROM THE RIG TO AVOID
UNDERWATER OBSTRUCTIONS. A MARINE EXCLUSION ZONE OF
500METERS IS IN EFFECT FOR ALL VESSELS OTHER THAN
ATTENDING RIG SUPPORT VESSELS.
- 20/15 FM: RCC NEW ZEALAND 310300 UTC JAN 15
COASTAL NAVIGATION WARNING 20/15
AREA RAGLAN
1. SEISMIC SURVEY IN PROGRESS BY MV POLAR DUKE IN AREA BOUNDED BY:
A. 38-04S 172-42E
B. 38-38S 173-02E
C. 38-46S 172-40E
D. 39-03S 172-50E
E. 39-08S 172-38E
F. 38-23S 172-11E
G. 38-18S 172-24E
H. 38-11S 172-20E
I. 38-04S 172-42E
MV POLAR DUKE TOWING TWELVE CABLES 7000 METRES LONG, END OF TOW MARKED
WITH YELLOW BUOYS LIT WITH WHITE LIGHTS FLASHING UNIFORM. MV POLAR DUKE
RESTRICTED IN ABILITY TO MANOEUVRE AND SUPPORTED BY VESSELS MV GURU AND
MV SANCO SKY.
3. MARINERS REQUESTED TO MAINTAIN SIX NAUTICAL MILE CLEARANCE FROM VESSEL
AND TOWED EQUIPMENT.
- 27/15 FM: RCC NEW ZEALAND 090430 UTC FEB 15
COASTAL NAVIGATION WARNING 27/15
AREAS KAIPARA AND RAGLAN
1. SEISMIC SURVEY IN PROGRESS BY MV AQUILA EXPLORER / H3JN
UNTIL APRIL 2015 IN AREA BOUNDED BY:
A. 33-30.00S 168-10.00E
B. 33-30.00S 171-50.00E
C. 35-02.00S 172-38.00E
D. 37-27.00S 174-22.00E
E. 37-48.00S 174-22.00E
F. 38-27.00S 174-02.00E
G. 38-30.00S 168-10.00E
2. AQUILA EXPLORER TOWING A STREAMER 5.7 MILES IN LENGTH.
THE END OF THE STREAMER IS MARKED BY A TAIL BUOY WITH
CONTINUOUS FLASHING LIGHT.
SUPPORT VESSEL MV OCEAN PIONEER / ZM2582 IN ATTENDANCE.
VESSELS MONITORING VHF 16 AND 69.
SIX MILE CLEARANCE FROM VESSEL AND TOWED EQUIPMENT REQUESTED.
- 33/15 FM: RCC NEW ZEALAND 152000 UTC FEB 15
COASTAL NAVIGATION WARNING 33/15
AREA KAIPARA
1. LIVE FIRING 162000 UTC TO 162200 UTC FEB 15
WITHIN 20 NM RADIUS OF 34-20S 171-50E
2. CANCEL THIS MESSAGE 162300 UTC FEB 15
-

VI

CORRECTIONS TO ADMIRALTY LIST OF RADIO SIGNALS (NZ NTM Edition No. 4 dated 20 February 2015)

VOLUME 2, NP282, 2014/15

Published Wk 13/14
(Last Updates: Weekly Edition No. 4 dated 22 January 2015)

AUTOMATIC IDENTIFICATION SYSTEM (AIS)

PAGE 148, AUSTRALIA, below Port of Dampier Sea Lt Buoy.

Insert:

Port Phillip South Channel Entrance Lt Buoy	38°17'71S 144°41'15E			Real	
Port Phillip South Channel Lt Bn No 24	38°17'93S 144°53'92E			Real	

[Australian Notice 25/1229/14 \(RSDRA2014000268147\)](#), 5/15

VOLUME 6, PART 4, NP 286(4), 2014/15

Published Wk 32/14

(Last Updates: Weekly Edition No. 1 dated 1 January 2015)

PAGE 31, AUSTRALIA, DEVONPORT, Tasmania, Port, CONTACT DETAILS, Call & VHF Channel.

Delete and replace by:

CONTACT DETAILS:

Call: Devonport VTS
VHF Channel: Ch 16; 14 67

[Marine and Safety Tasmania, \(RSDRA2014000262043 & RSDRA2015000009610\)](#), 6/15

PAGE 319, SOUTHERN OCEAN, TERRE ADELIE (France).

Delete and replace by:

TERRE ADELIE (France)

66° 40'S 140° 01'E

Port

CONTACT DETAILS:

Dumont d'Urville Base

VHF Channel: Ch 16; 26 27
RT Frequency (kHz): 8245
Telephone: +262(0)2 62002001
+870 764651922 (Inmarsat-F77)
+881 631413549 (Iridium)
Fax: +262(0)2 62002002
E-mail: dista@ta-taaf.fr
radio@ta-taaf.fr (Radio Communications Bureau)
Website: www.taaf.fr

NOTES:

- (1) Ch 26 relayed as far as Île des Pétréls, Ch 27 relay (installed on the highest point of Île des Pétréls) provides a range of approx 25 n miles.
- (2) VHF aeronautical frequencies are provided on 121.5 MHz and 129.7 MHz (communication with aircraft).

[French Notice 51/14, \(RSDRA2014000267889\)](#), 5/15

PAGE 23, AUSTRALIA, BURNIE, Tasmania, Port, CONTACT DETAILS, Call & VHF Channel.

Delete and replace by:

CONTACT DETAILS:

Call: Burnie VTS
VHF Channel: Ch 16; 14

[Marine and Safety Tasmania, \(RSDRA2014000262043 & RSDRA2015000009610\)](#), 6/15

PAGE 55, AUSTRALIA, HOBART, Tasmania, Port, CONTACT DETAILS, Call.

Delete and replace by:

CONTACT DETAILS:

Call: Hobart VTS

[Marine and Safety Tasmania, \(RSDRA2014000262043\)](#), 6/15

PAGE 58, AUSTRALIA, LAUNCESTON, Tasmania (BELL BAY), Port, CONTACT DETAILS, Call & VHF Channel.

Delete and replace by:

CONTACT DETAILS:

Call: Bell Bay VTS
VHF Channel: Ch 14 16; 06 08 14 16 67

(Former update 44/14)

[Marine and Safety Tasmania, \(RSDRA2014000262043 & RSDRA2015000009610\)](#), 6/15

PAGE 74, AUSTRALIA, PORT LATTA, Tasmania, Port, CONTACT DETAILS, above VHF Channel.

Insert:

Call: Port Latta VTS

[Marine and Safety Tasmania, \(RSDRA2014000262043\)](#), 6/15

HYDROGRAPHIC NOTE

(For instructions, see next page)

New Zealand Hydrographic Authority
Land Information New Zealand
Radio New Zealand House
155 The Terrace
PO Box 5501
Wellington 6145
New Zealand

Tel: 0800 665 463 or +64 (0)4 460 0110

Fax: +64 (0)4 460 0161

Email: ntm@linz.govt.nz

Date Ref. No.

Name and address of ship or sender

.....
.....

Tel/Fax/Telex/Email of sender

General locality

Subject

Position. Lat. Long.

Position fixing system used

Datum

Paper Chart/ENC affected Edition

Dated

Latest Notice to Mariners held

Publications affected (Edition No. and date of latest supplement, page no., ID no. etc)

Details:

A replacement copy of Chart No.
is required (see Instruction 4).

Signature of observer/reporter

HYDROGRAPHIC NOTE

Forwarding Information for Charts and Hydrographic Publications

Note: An acknowledgement of receipt will be sent and the information then used to the best advantage, which may mean immediate action or inclusion in a revision in due course. When a Notices to Mariners is issued, the sender's ship or name is quoted as authority unless (as sometimes happens) the information is also received in a foreign Notices to Mariners. An explanation of the use of contributions from all parts of the world would be too greater task and a further communication should only be expected when the information is of outstanding value or has unusual features.

INSTRUCTIONS:

1. Mariners are requested to notify New Zealand Hydrographic Authority, Land Information New Zealand, 155 The Terrace, PO Box 5501, Wellington 6145, New Zealand, when new or suspected dangers to navigation are discovered, changes observed in aids to navigation, or corrections to publications seem to be necessary. The Admiralty publication, *The Mariner's Handbook* (NP 100), Chapter 4, gives general instructions.
2. This form and its instructions have been designed to help both the sender and the recipient. It should be used, or followed, closely, whenever appropriate. Copies of this form may be obtained gratis from the New Zealand Hydrographic Authority at the address above, or in PDF format directly from the LINZ website, www.linz.govt.nz/hydro. Hydrographic Notes can also be sent from mobile devices using the Hydrographic Notes Application available for [Android](#) and [Apple](#) devices.
3. When a position is defined by sextant angles or bearings (true or magnetic being specified) more than two should be used in order to provide a check. Distances observed by radar should be quoted. However, when there is a series of fixes along a ship's course, only the method of fixing and the objects used need to be indicated. Latitude and longitude should only be used specifically to position the details when they have been fixed by astronomical observations or GPS and a full description of the method, equipment and datum used should be given.
4. Paper Charts: A cutting from the largest scale paper chart is the best medium for forwarding details, the alterations and additions being shown thereon in red. When requested, a new copy will be sent in replacement of a chart that has been used to forward information, or when extensive observations have involved defacement of the observer's chart. If it is preferred to show the amendments on a tracing of the largest scale chart (rather than the chart itself) these should be in red as above, but adequate detail from the chart must be traced in black ink to enable the amendments to be fitted correctly.

Electronic Navigational Charts (ENCs): A screen dump of the largest scale usage band ENC with the alterations and additions being shown thereon in red.

5. When soundings are obtained, *The Mariners Handbook* (NP 100) should be consulted. The echo sounding trace should be marked with times, depths, etc., and forwarded with the report. It is important to state whether the echo sounder is set to register depths below the surface, or below the keel; in the latter case the vessel's draught should be given. Time and date should be given in order that corrections for the height of the tide may be made where necessary. The make, name, and type of echo sounder set should also be given.
6. Modern echo sounders frequently record greater depths than the set's nominal range, e.g. with a set whose maximum is 500m a trace appearing at 50m may in fact be 550m or even 1,050m. Erroneous deep soundings beyond the sets nominal range can usually be recognised by the following:
 - (a) The trace being weaker than normal for the depth registered
 - (b) The trace appearing to pass through the transmission line
 - (c) The "feathery" nature of the trace.
7. Reports which cannot be confirmed or are lacking in certain details should not be withheld. Shortcomings should be stressed and any firm expectation of being able to check the information on a succeeding voyage should be mentioned.
8. Reports of shoal soundings, uncharted dangers and navigational aids out of order should, at the mariner's discretion, also be made by radio to the nearest coast radio station. The draught of modern tankers is such that any uncharted depth under 30 metres or 15 fathoms may be of sufficient importance to justify a radio message.

NZ 5315

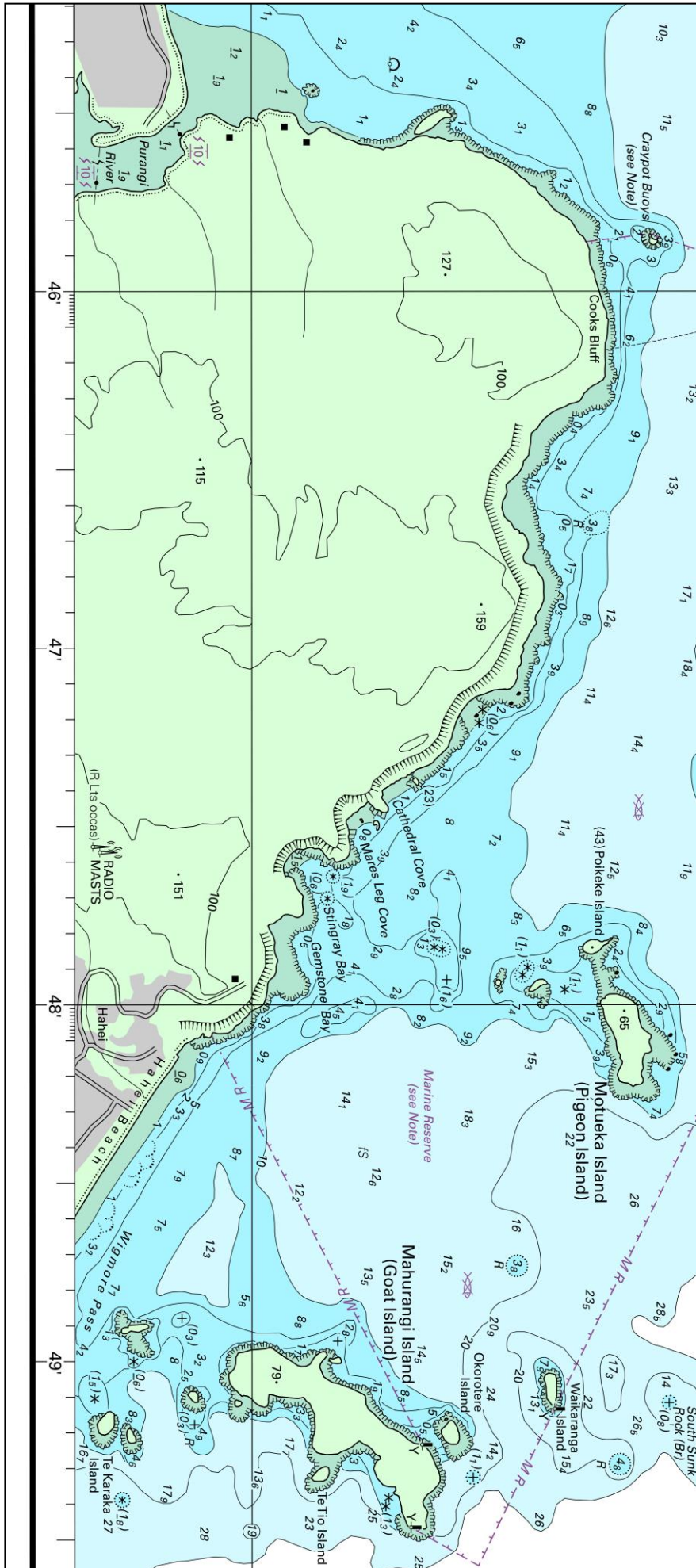


Image size (mm)
115.9 x 261.1

NZ5315

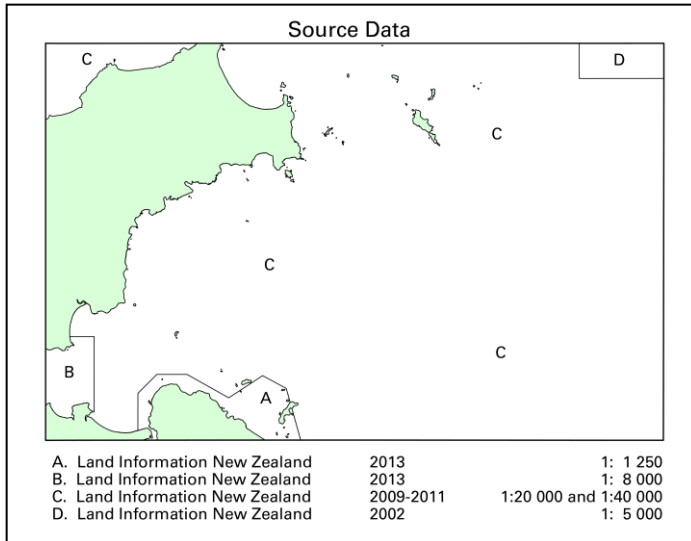


Image size (mm) 91.8 x 71.2

NZ5315

Tidal Levels referred to Datum of Soundings							
Place	Lat S	Long E	Heights in metres above Datum				Datum and Remarks
			MHWS	MHWN	MLWN	MLWS	
Whitianga	36°50'	175°42'	2.1	1.8	0.6	0.3	2.832 metres below LINZ mark code EEEY.

Image size (mm) 150.4 x 33.6