

NEW ZEALAND NOTICES TO MARINERS

Notices **NZ 62 – 75**

© Crown Copyright 2015. All rights Reserved. Permission is not required to make analogue copies of these Notices but such copies are not to be sold.

CONTENTS

- I [Explanatory Notes.](#)
 - II [New Zealand Notices to Mariners.](#)
 - III [Corrections to New Zealand Light List.](#)
 - IV [Corrections to Sailing Directions and New Zealand Publications.](#)
 - V [Navigational Warnings.](#)
 - VI [Corrections to Admiralty List of Radio Signals.](#)
-

New Zealand Notices to Mariners are the authority for correcting New Zealand charts within the New Zealand area of charting responsibility as shown in [Annual Notice No. 1](#).

Mariners are requested to immediately inform New Zealand Hydrographic Authority, Land Information New Zealand, 155 The Terrace, PO Box 5501, Wellington 6145, New Zealand, Phone: 0800 665 463 or +64 (0)4 460 0110, Fax: +64 (0)4 460 0161, email: ntm@linz.govt.nz, of the discovery of new or suspected dangers to navigation, or shortcomings in charts and publications. A copy of a Hydrographic Note, a convenient form on which to send such information, is included at the end of Section VI of the Fortnightly Notices to Mariners.

Changes or defects in aids to navigation should be reported to the Rescue Coordination Centre New Zealand (RCCNZ) via the nearest New Zealand Coastal Maritime Radio Station Phone: +64 (0)4 577 8030, Fax: +64 (0)4 577 8038 or +64 (0)4 577 8041, email: rccnz@maritimenz.govt.nz.

Copies of these Notices can be obtained from Land Information New Zealand, Maritime New Zealand, Principal Chart Agents at the major ports of New Zealand and the Internet: www.linz.govt.nz.

EXPLANATORY NOTES

Charts. The notices in Section II give instructions for the correction of charts. Geographical positions refer to the largest scale chart unless otherwise stated. They are normally given in degrees, minutes and decimals of a minute, but may occasionally quote seconds for convenience when plotting from the graduation of some older-style charts. Bearings are true reckoned clockwise from 000° to 359°; those relating to lights are given as seen by an observer from seaward. Symbols referred to are those shown in publication Chart 5011 (*INT 1*) Symbols and Abbreviations used on Admiralty Paper Charts, published by the United Kingdom Hydrographic Office.

Alterations to depth contours, deletion of depths to make way for new detail, etc. are not mentioned unless they have some navigational significance.

Block corrections or notes accompanying notices in Section II are placed after Section VI.

Temporary and Preliminary Notices. These are indicated by (T) or (P) after the notice number. A list of [\(T\) and \(P\) Notices in force](#) is published on the LINZ website and in the fortnightly Editions of Notices to Mariners. Charts are not corrected for them before issue; they should be corrected in pencil on receipt.

Light Lists. The detailed correction to the Light List is given in Section III and may not be published in the same edition as the chart correcting notice. The entire entry for each light is printed, and an asterisk (*) is shown under the column which contains an amendment. In the case of a new light, an asterisk (*) appears under all the columns. New and extensively altered entries are intended to be pasted in. It is recommended that a manuscript entry be made for all shorter corrections.

It is emphasized that the [List of Lights](#) is the authority for lights and that many alterations, especially those of a temporary but operational nature, may only be promulgated as corrections to the List of Lights.

Sailing Directions. Corrections to Sailing Directions are given in Section IV. It is recommended that such corrections be kept together in a file with the latest list of those in force on top. The file can then be consulted when using the Current Edition of the book to see if any notices affecting the area under consideration are extant. Corrections should not be pasted into the Current Edition of the book or Supplement.

New Zealand Publications. Corrections to New Zealand Publications are given in Section IV.

Navigational Warnings. NAVAREA XIV and NZ Coastal Navigational Warnings that are in force at the time of publication are given in Section V.

Radio Signals. When radio signals are affected by a notice the Admiralty List of Radio Signals reference number is quoted. The detailed correction to the List of Radio Signals is given in Section VI and may be published in a later edition than the chart correcting notice. It is recommended that such corrections be kept together in a file with the latest list of those in force on top. Corrections should not be pasted into the Current Edition of the book.

Correction of Charts and Publications by the User. New Zealand Notices to Mariners contain important information and should be used to keep the specified charts and books up to date.

THE USE OF CHARTS AND ASSOCIATED PUBLICATIONS

Reliance on Charts and Associated Publications. While every effort is made to ensure the accuracy of the information on New Zealand charts and other publications, it should be appreciated that it may not always be complete and up to date. The mariner must be the final judge of the reliance to be placed on the information given, bearing in mind their particular circumstances, local pilotage guidance and the judicious use of available navigational aids.

Charts. Charts should be used with prudence: there are areas where the source data are old, incomplete or of poor quality. The mariner should use the largest scale appropriate for his particular purpose; apart from being the most detailed, the larger scales are usually corrected first. When extensive new information (such as a new hydrographic survey) is received, some months may elapse before it can be fully incorporated in published charts. On small scale charts of ocean areas where hydrographic information is, in many cases, still sparse, charted shoals may be in error as regards position, least depth and extent. Undiscovered dangers may exist, particularly away from well-established routes.

Further guidance. The Mariner's Handbook (NP 100) gives a fuller explanation of the limitations of charts. All users should study it in their own interest.

ENC/ECDIS Data Presentation and Performance Check in Ships. The International Maritime Organization (IMO) has recently indicated its concerns about operating anomalies identified in some ECDIS that fail to display important new chart features.

The International Hydrographic Organization (IHO) has produced an ENC Data Presentation and Performance Check dataset that allows mariners to check their ECDIS. The check dataset is available through ENC service providers and from the IHO website (www.iho.int) which includes instructions.

Mariners are strongly recommended to use the dataset and report the results of their checks to help the IHO identify how the different brands of ECDIS display and handle chart information. Mariners are asked to also inform the IMO, national Hydrographic Offices, ECDIS manufacturers and others, so that they can take any corrective action that may be necessary.

In order to present the most comprehensive report possible to the IMO and to further assist in resolving the issues so far identified, the IHO is keen that as many ships as possible forward their results. Reports on the results can be sent via a form provided with the data or the results can be submitted on-line through a web-form.

All relevant documentation can be downloaded free from the IHO website at: www.iho.int.

II

NUMERICAL INDEX OF CHARTS AFFECTED
(NZ NTM Edition No. 6 dated 20 March 2015)

| NZ Chart No. | INT Chart No. | ENC No. | Notice to Mariners |
|--------------|---------------|----------|----------------------------|
| NZ 21 | INT 641 | NZ200023 | 69(T) |
| NZ 23 | INT 640 | | 69(T), 70(T) |
| NZ 25 | INT 648 | | 69(T), 70(T) |
| NZ 43 | | | 69(T) |
| NZ 45 | | | 69(T) |
| NZ 45 | | NZ300045 | 68(T), 70(T) |
| NZ 46 | | | 66, 72(T) |
| NZ 48 | | | 68(T), 69(T), 70(T), 72(T) |
| NZ 52 | | | 74(T) |
| NZ 53 | | | 74(T) |
| NZ 61 | | | 72(T) |
| NZ 443 | | NZ300443 | 69(T) |
| NZ 463 | | | 63, 72(T) |
| NZ 522 | | | 74(T) |
| NZ 532 | | NZ305322 | 74(T) |
| NZ 614 | | | 72(T) |
| NZ 614 | | NZ300614 | 73(P) |
| NZ 615 | | | 67 |
| NZ 615 | | NZ300615 | 73(P) |
| NZ 632 | | NZ400632 | 75(T) |
| NZ 4314 | | NZ404314 | 71(T) |
| NZ 4541 | | | 68(T) |
| NZ 5227 | | | 74(T) |
| NZ 5314 | | | 64 |
| NZ 6151 | | | 72(T), 73(P) |
| NZ 6152 | | | 72(T), 73(P) |
| NZ 6153 | | | 72(T) |
| NZ 6153 | | NZ461531 | 73(P) |
| NZ 6154 | | | 72(T) |
| NZ 6154 | | NZ561541 | 73(P) |
| NZ 6321 | | NZ506321 | 75(T) |
| NZ 14060 | INT 60 | | 69(T) |
| NZ 14061 | INT 61 | | 69(T) |
| NZ 14600 | INT 600 | NZ14600E | 69(T) |
| NZ 14601 | INT 601 | | 69(T) |
| | | NZ461532 | 73(P) |
| | | NZ505315 | 62 |
| | | NZ561542 | 73(P) |
| | | NZ661542 | 73(P) |

NEW ZEALAND TEMPORARY AND PRELIMINARY NOTICES IN FORCE

(NZ NTM Edition No. 6 dated 20 March 2015)

| NZ Notice | T/P | Charts Affected | Locality and Subject |
|-----------|-----|--|--|
| | | NZ Chart, ENC Cell | |
| 242/09 | P | NZ 42, NZ 4265 | Kaipara Hr. Entrance: Depths |
| 222/10 | P | NZ 542 | Whakatane: Depths |
| 20/11 | P | NZ 5411, NZ5412, NZ405411, NZ505412 | Tauranga Hr.: Lights |
| 202/11 | P | NZ 6142, NZ606142 | Port Nelson: Light, Beacon, Works in Progress |
| 211/12 | P | NZ 61, NZ 614, NZ300061, NZ300614, NZ506141 | North Coast, Golden Bay & Tasman Bay: Lights |
| 85/13 | P | NZ 541, NZ 5411, NZ 5412, NZ 5413, NZ300541, NZ405411, NZ505412 | East Coast, Tauranga, Port of Tauranga: Works |
| 140/13 | P | NZ 5314 | East Coast, Mercury Islands, Rocky Bay, Coralie Bay, Orauaki Point, Te Whanga Bay, Korapuki Islands: Rocks |
| 147/13 | P | NZ 521, NZ300521 | East Coast, Poor Knights Islands: Depths |
| 156/13 | P | NZ 541, NZ 5413, NZ300541, NZ405413 | East Coast, Tauranga, Motiti Island: Depths |
| 169/13 | P | NZ 5411, NZ405411 | East Coast, Tauranga Harbour, Katikati Entrance: Buoy |
| 172/13 | P | NZ 6152 | North Coast, Havelock: Lights, Beacons |
| 194/13 | P | NZ 5124 | East Coast, Bay of Islands, Kerikeri Inlet: Light Beacons |
| 220/13 | T | NZ 5612, NZ505612, NZ605612 | East Coast, Napier Inner Harbour and Approaches: Dredging |
| 221/13 | P | NZ 4265 | West Coast, Kaipara Harbour: Lights, Beacons, Buoys |
| 242/13 | T | NZ 53, NZ 532, NZ 5321, NZ 5324, NZ305322, NZ405321 | East Coast, Auckland, Rakino Island: Light Unlit |
| 41/14 | P | NZ 268 | Chatham Islands: Depths and Rocks |
| 42/14 | P | NZ 26, NZ 27, NZ 268 | Chatham Islands: Areas to be avoided |
| 45/14 | P | NZ 632, NZ 6324, NZ406324 | East Coast, Akaroa Harbour: Area of Restricted Access |
| 132/14 | T | NZ 6321, NZ506321, NZ606321 | East Coast, Lyttelton Harbour: Light, Beacon |
| 138/14 | T | NZ 23 (INT 640), NZ 26, NZ 55, NZ 56, NZ 14600 (INT 600), NZ200023, NZ300055, NZ300056, NZ14600E | East Coast, Poverty Bay, Eastwards: Scientific Instruments |
| 139/14 | P | NZ 5612 | East Coast, Approaches to Napier: Light Sectors |
| 140/14 | T | NZ 23 (INT 640), NZ 26, NZ 58, NZ 14600 (INT 600), NZ200023, NZ300058, NZ14600E | East Coast, Honeycomb Southeastwards: Scientific Instruments |
| 141/14 | T | NZ 23 (INT 640), NZ 25 (INT 648), NZ 45, NZ 48, NZ200023, NZ300045 | West Coast, South Taranaki Bight: Seabed Obstructions |
| 156/14 | P | NZ 82 (T 82), NZ 8238 (T 8238), NZ 8247 (T 8247), NZ 8248 (T 8248), NZ8259 (T 8259), NZ300082, NZ508238, NZ608238 | Kingdom of Tonga, Ha'apai Group: Navigation Aids |
| 171/14 | P | NZ 521, NZ300521 | East Coast, Whangarei Harbour: Directional light |
| 210/14 | P | NZ 8215, NZ508215 | Kingdom of Tonga, Niuatoputapu: Navigation Aids |
| 211/14 | P | NZ 82 (T 82), NZ 827 (T 827), NZ 8275 (T 8275), NZ 8277 (T 8277), NZ300827, NZ408275, NZ508277 | Kingdom of Tonga, Tongatapu: Navigation Aids |
| 213/14 | T | NZ 8655, NZ508655 | Samoa, Approaches to Apia Harbour: Buoys |
| 218/14 | T | NZ 4315, NZ504315, NZ604315 | West Coast, Onehunga Wharf: Berth Depths |
| 224/14 | P | NZ 6422, NZ406422, NZ506422 | East Coast; Timaru Harbour: Works, Exclusion Zone and Buoy |
| 238/14 | P | NZ 822 (T 822), NZ 8225 (T 8225), NZ400822, NZ508225 | Kingdom of Tonga, Vava'u Group, Neiafu Harbour: Prohibited Area |
| 239/14 | T | NZ 521, NZ5215, NZ300521, NZ505215 | East Coast, Whangarei Harbour: Works |
| 243/14 | P | NZ 5113 | East Coast, Houhora & Rangaunu Harbour: Aids to Navigation |
| 245/14 | P | NZ 531, NZ 534, NZ 5318, NZ300531 | East Coast, Mercury Islands, Mercury Bay: Depths, Rocks |
| 246/14 | T | NZ 61, NZ 614, NZ 6144, NZ300614, NZ406144 | North Coast, Tasman Bay and Golden Bay: Spat Catching Areas |
| 249/14 | T | NZ 5321, NZ 5322, NZ405321, NZ505322 | East Coast, Auckland Harbour, Takapuna Beach: Research Buoy |
| 251/14 | T | NZ 54, NZ 541, NZ 542, NZ 5413, NZ300541, NZ405413 | East Coast, Tauranga, Astrolabe Reef: Exclusion Zone and Waverider Buoy |
| 261/14 | T | NZ 522, NZ 532, NZ 5227, NZ305322 | East Coast, Kawau Bay, Matakana River: Works in Progress |
| 263/14 | P | NZ 62, NZ 63, NZ 6212, NZ300062, NZ462122 | East Coast, Kaikoura: Marine Reserve |
| 264/14 | P | NZ 63, NZ 64, NZ 632, NZ 6324, NZ300063, NZ406324 | East Coast, Banks Peninsula, Akaroa Harbour: Marine Reserve |
| 275/14 | P | NZ 8655, NZ508655 | Samoa, Apia Harbour: Buoys and Breakwater |
| 22/15 | P | NZ 45, NZ 48, NZ300045 | West Coast, Cape Egmont Westwards: Protected Area |
| 24/15 | P | NZ 82 (T 82), NZ 822 (T 822), NZ 8225 (T 8225), | Kingdom of Tonga, Vava'u Group: Navigation |

II

| NZ Notice | T/P | Charts Affected | Locality and Subject |
|-----------|-----|--|---|
| | | NZ Chart, ENC Cell | |
| | | NZ300082, NZ400822, NZ508225 | Aids |
| 27/15 | T | | Maritime Safety Broadcasts |
| 28/15 | T | NZ 21 (INT 641), NZ 23 (INT 640), NZ 41, NZ 42, NZ 43, NZ 443, NZ 4111, NZ 14061 (INT 61), NZ 14600 (INT 600), NZ 14601 (INT 601), NZ 14602 (INT 602), NZ 14605 (INT 605), NZ14600E, NZ200021, NZ300023, NZ300041, NZ300042, NZ300043, NZ300443 | West Coast: Seismic Survey |
| 29/15 | T | NZ 632, NZ 6321, NZ400632, NZ506321, NZ606321 | East Coast, Lyttelton Harbour, Sticking Point Eastwards: Exclusion Zone |
| 30/15 | T | NZ 25 (INT 648), NZ 64, NZ 14600 (INT 600), NZ 14601 (INT 601), NZ14600E, NZ200025, NZ300064 | East Coast, Otago Peninsula Eastwards: Seismic Survey |
| 38/15 | T | NZ 615, NZ 6151, NZ 6152, NZ300615 | North Coast, Marlborough Sounds, Port Ligar, Forsyth Bay, Beatrix Bay: Scientific Instruments |
| 47/15 | T | NZ 21 (INT 641), NZ 23 (INT 640), NZ 25 (INT 648), NZ 43, NZ 45, NZ 48, NZ 443, NZ 14060 (INT 60), NZ 14061 (INT 61), NZ 14600 (INT 600), NZ 14601 (INT 601), NZ14600E, NZ200023, NZ300045, NZ300443 | West Coast, Cape Egmont Westwards: Subsea Construction |
| 48/15 | T | NZ 24, NZ 25 (INT 648), NZ 29, NZ 68, NZ 14060 (INT 60), NZ 14061 (INT 61), NZ 14065 (INT 65), NZ 14600 (INT 600), NZ 14601 (INT 601), NZ14600E, NZ200025, NZ300068 | South Island, Nugget Point Southward: Seismic Survey |
| 49/15 | T | NZ 7142, NZ407142, NZ507142 | West Coast, Greymouth Harbour: Depths |
| 50/15 | T | NZ 286, NZ 2862 | Auckland Islands: Scientific Instruments |
| 51/15 | T | NZ 14638 (INT 638) | Fiji, Viti Levu, Vanua Levu & Southern Lau Group: Lights |
| 52/15 | T | NZ 82 (T 82), NZ 14605 (INT 605), NZ 14631 (INT 631), NZ 14638 (INT 638), NZ14605W, NZ214631, NZ300082 | Kindgom of Tonga, Hunga Ha'apai Southeastwards: Volcanic Activity |
| 56/15 | T | NZ 23 (INT 640), NZ 25 (INT 648), NZ 45, NZ 48, NZ200023, NZ300045 | West Coast, South Taranaki Bight: Drilling Operations |
| 58/15 | T | NZ 6422, NZ406422 | East Coast, Timaru: Seabed Obstruction |
| 59/15 | T | NZ 14065 (INT 65), NZ 14900 (INT 900), NZ14065E, NZ21490E | Ross Sea, Terra Nova Bay, Gerlache Inlet: Scientific Instrument |
| 68/15 | T | NZ 45, NZ 48, NZ 4541, NZ300045 | West Coast, Wanganui, South Mole Head: Light Unlit |
| 71/15 | T | NZ 4314, NZ404314 | West Coast, Manukau Harbour Entrance: Depths |
| 73/15 | P | NZ 614, NZ 615, NZ 6151, NZ 6152, NZ 6153, NZ 6154, NZ300614, NZ300615, NZ461531, NZ461532, NZ561541, NZ561542, NZ661542 | Marlborough Sounds: Use of Automated Navigation Systems |
| 74/15 | T | NZ 52, NZ 53, NZ 522, NZ 532, NZ 5227, NZ305322 | East Coast, Kawau Bay: Scientific Instruments |
| 75/15 | T | NZ 632, NZ 6321, NZ400632, NZ506321 | East Coast, Lyttelton Harbour: Unlit Buoy |

NZ 62/15 NEW ZEALAND PUBLICATIONS – Electronic Navigational Charts (ENCs).

New ENC Published

ENC Cell Published Title

NZ505315 Mar 15 NZ505315 - NZ5315 - North Island - East Coast - Mercury Bay

README.TXT File

The README.TXT file located within the ENC_ROOT folder of an ENC exchange set contains important safety related information. This file is updated on a regular basis and should be consulted to ensure that all related issues are taken into consideration. The latest README.TXT file is also located on the LINZ website <http://www.linz.govt.nz/sea/charts/electronic-navigational-charts-encs>.

Use of Electronic Navigational Charts

For compliance with New Zealand legal requirements for nautical charts and publications please refer to *Maritime Rules Part 25*, as supported by Maritime New Zealand's *Marine Guidance Notice Issue 8*, (July 2009), Use of Electronic Charts, ECDIS and ENCs in New Zealand, available from the Maritime New Zealand website www.maritimenz.govt.nz/Commercial/Shipping-safety/Safety-updates/Guidance-notices.asp.

New Zealand Hydrographic Authority
NI 55/2015

NZ 63/15 NEW ZEALAND PUBLICATIONS – Paper Chart.

Former notices – NZ 271(P)/14, NZ 273(P)/14 are cancelled.

(1) New Edition Published.

| <i>Chart</i> | <i>Published</i> | <i>Title and other remarks</i> | <i>Scale 1:</i> | <i>Page of 15th. Edition NZ 202</i> |
|---------------|------------------|---|-----------------|--|
| NZ 463 | Mar 15 | Approaches to Wellington <i>New edition incorporating updates from new survey data, changes to lights and light sectors, and general updating throughout.</i> 41° 03'.50S. – 41° 38'.40S. 174° 06'.80E. – 175° 18'.00E. | 100 000 | 23 |

(2) Chart Permanently Withdrawn.

| <i>Chart</i> | <i>On Publication of New Edition</i> | <i>Date</i> |
|---------------|--------------------------------------|-------------|
| NZ 463 | NZ 463 | Mar 15 |

New Zealand Hydrographic Authority
NI 45/2015

NZ 64/15 **NEW ZEALAND PUBLICATIONS – Paper Charts.**

New Edition to be Published Shortly.

Chart No. *Title*

NZ 5314 Mercury Islands

New Zealand Hydrographic Authority
NI 58/2015

NZ 65/15 BRITISH ADMIRALTY PUBLICATIONS – New Editions Published.

| <i>NP No.</i> | <i>Title</i> | <i>Date</i> | <i>Remarks</i> |
|-----------------|---|-------------|--|
| NP83 | Admiralty List of Lights and Fog Signals Volume K 2015/16 Indian and Pacific Oceans, South of the Equator. | 19/02/15 | Updated to BA NM Week 4/15 (22/01/15). First Amendments in BA NM Week 8/15. Volume K 2014/15 is cancelled. |
| NP100 & e-NP100 | The Mariner's Handbook (Tenth Edition 2015). | 12/03/15 | New edition correct to 18/12/14. This edition supersedes The Mariner's Handbook (Ninth Edition 2009) which is cancelled. |
| NP282 | Admiralty List of Radio Signals. Radio Aids to Navigation, Differential GPS (DGPS), Legal Time, Radio Time Signals and Electronic Position Fixing System. | 26/02/15 | Updated to BA NM Week 4/15 (22/1/15). First updates in BA NM Week 9/15. The 2014/15 Edition of NP282 is cancelled. |

UKHO Weekly Editions 08/15, 09/15, 11/15
NI 62/2015

NZ 66/15 NEW ZEALAND – North Island – South Coast – Wellington – Light, Rock, Wreck.

Former notices – NZ 271(P)/14, NZ 273(P)/14 are cancelled.

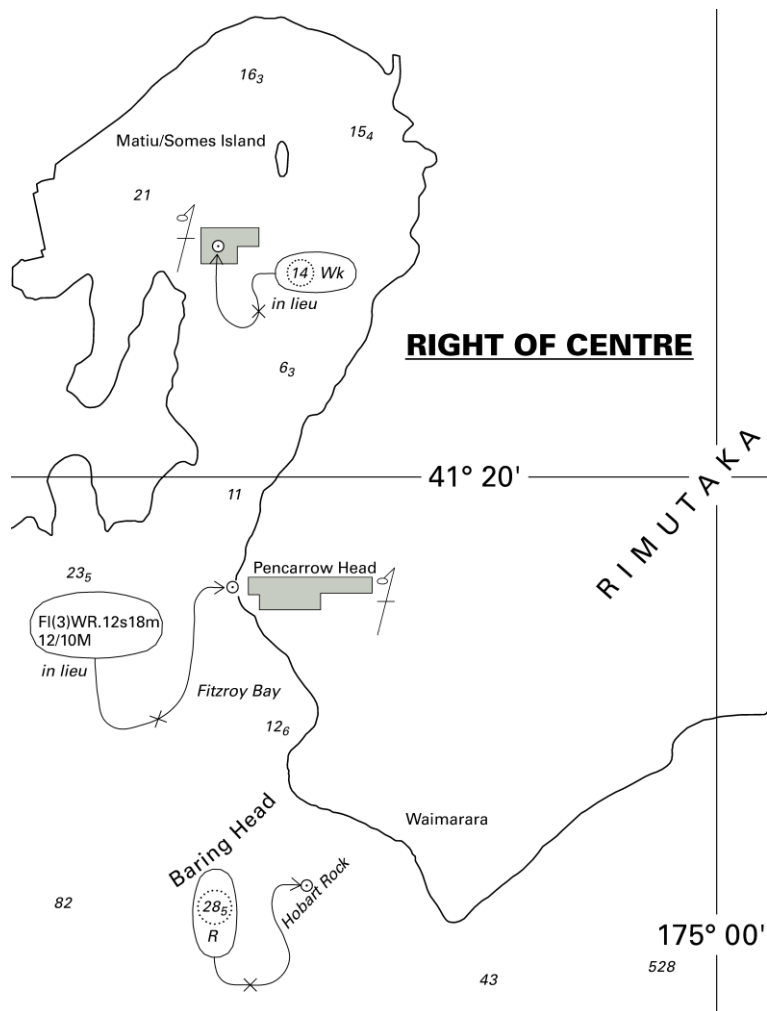
Chart NZ 46 [251/13]

Insert ~~28~~₅
R 41° 25'.80S., 174° 52'.27E.

Amend range of light to, 12/10M 41° 21'.56S., 174° 50'.87E.

Replace ~~14~~₆ Wk with ~~14~~₆ Wk 41° 16'.72S., 174° 50'.60E.

New Zealand Hydrographic Authority
NI 46/2015



| | | | |
|---|-------------------|---|--|
| <i>Issued as a guide to chart correction.</i> | | <i>Use in conjunction with the appropriate NZ Notice to Mariners.</i> | |
| LAST CORRECTION | NZ NTM No. | CHART No. | |
| NZ 251/13 | NZ 66/15 | NZ 46 | |

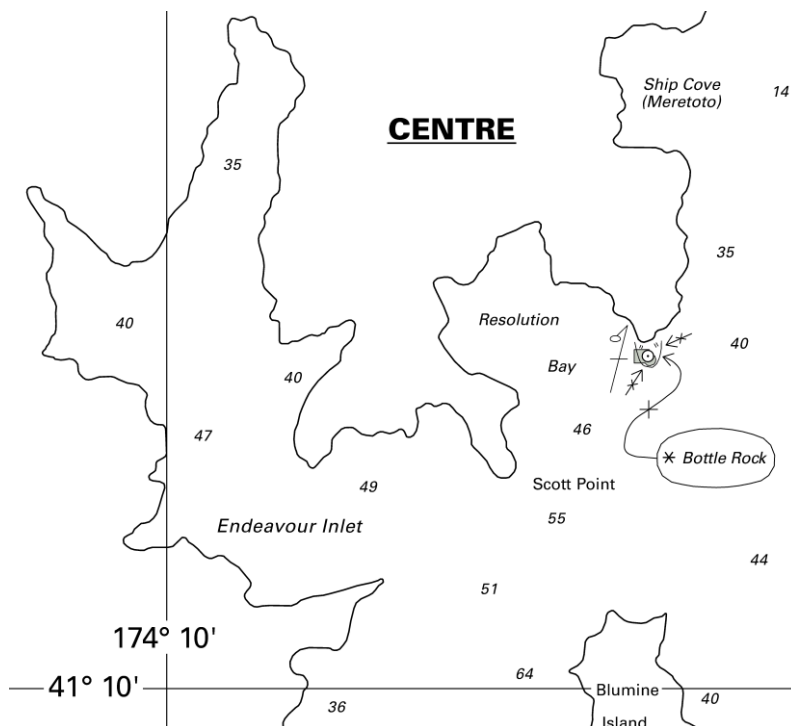
NZ 67/15 NEW ZEALAND – South Island – North Coast – Marlborough Sounds – Bottle Rock.

Chart NZ 615 [191/14]

Insert ✕, *Bottle Rock*, and extend 10m contour S to enclose (a) 41° 07'.63S., 174° 14'.53E.

Delete depth 11₉, close E of: (a) above

New Zealand Hydrographic Authority
NI 57/2015



| | | | |
|---|-------------------|---|--|
| <i>Issued as a guide to chart correction.</i> | | <i>Use in conjunction with the appropriate NZ Notice to Mariners.</i> | |
| LAST CORRECTION | NZ NTM No. | CHART No. | |
| NZ 191/14 | NZ 67/15 | NZ 615 | |

NZ 68(T)/15 NEW ZEALAND – North Island – West Coast – Wanganui – South Mole Head Light Unlit.

1. The South Mole Head Light, Fl.G.1.5s10m5M in position 39° 57'.001S., 174° 58'.897E. is temporarily extinguished until further notice.
2. Mariners are advised to exercise caution when navigating in the area.

Charts temporarily affected: NZ 45, NZ 48, NZ 4541, NZ300045

Wanganui Port
NZ Light List: 4074
NI 51/2015

NZ 69(T)/15 NEW ZEALAND – North Island – Cape Egmont, Westwards – Seismic Survey Complete.

Former notice – NZ 37(T)/15 is cancelled.

Cancel this notice on receipt.

**Charts formerly affected: NZ 21 (INT 641), NZ 23 (INT 640), NZ 25 (INT 648), NZ 43, NZ 45, NZ 48, NZ 443
NZ 14060 (INT 60), NZ 14061 (INT 61), NZ 14600 (INT 600), NZ 14601 (INT 601), NZ14600E, NZ200023,
NZ300443**

MV Polar Duke
NI 54/2015

NZ 70(T)/15 NEW ZEALAND – North Island – West Coast – South Taranaki Bight – Drilling Operations.

Former notice – NZ 262(T)/14 is cancelled.

Cancel this notice on receipt.

Charts formerly affected: NZ 23 (INT 640), NZ 25 (INT 648), NZ 45, NZ 48, NZ200023, NZ300045

ENSCO 107

NI 52/2015

NZ 71(T)/15 NEW ZEALAND – North Island – West Coast – Manukau Harbour Entrance – Depths.

Former notice – NZ 274(T)/14 is cancelled.

1. All vessels should contact the Signalman at South Head. Phone (09) 235-1013, for the latest conditions.
2. Mariners should be aware that depths in the approaches to Manukau Harbour and across the bar are constantly changing.

South West Channel

- * 3. A recent survey (4 March 2015) indicates that the deepest water was found to lie within the following sectors bearing Ninepin Rock Light:

075.5° - 076.5° True. Least depth of 5.1m below CD can be expected.
082.5° - 087.5° True. Least depth of 5.1m below CD can be expected.
084.0° - 087.0° True. Least depth of 5.4m below CD can be expected.
4. At a distance of 2.3 NM from Ninepin Rock Lt. mariners should alter southwards to enter Middle Deep to avoid shoaler water on North Bank.

** Indicates a new or revised entry*

Charts temporarily affected: NZ 4314, NZ404314

Ports of Auckland Ltd.
NI 53/2015

NZ 72(T)/15 NEW ZEALAND – South Island – North Coast – Marlborough Sounds – Use of Automated Navigation Systems – Superseded.

Former notice – NZ 194(P)/04 is cancelled.

Cancel this notice on receipt.

Charts formerly affected: NZ 46, NZ 48, NZ 61, NZ 463, NZ 614, NZ 6151, NZ 6152, NZ 6153, NZ 6154

New Zealand Hydrographic Authority
NI 58/2015

NZ 73(P)/15 NEW ZEALAND – South Island – North Coast – Marlborough Sounds – Use of Automated Navigation Systems.

1. Marlborough District Council, Navigational Bylaw 2009, prohibits the use of automated navigational systems on board commercial vessels when navigating within the Marlborough Harbour limits.
2. Further details are available on the Marlborough District Council website.
3. Charting action will take place in due course.

Charts affected: NZ 614, NZ 615, NZ 6151, NZ 6152, NZ 6153, NZ 6154, NZ300614, NZ300615, NZ461531, NZ461532, NZ561541, NZ561542, NZ661542

Marlborough District Council
NI 56/2015

NZ 74(T)/15 NEW ZEALAND – North Island – East Coast – Kawau Bay – Scientific Instruments.

Former notice – NZ 60(T)/15 is cancelled.

- * 1. From 18 March seabed mounted tide gauges, each marked by a lit buoy *Fl. Y* will be deployed in the following positions until May 2015:
- a) 36° 26'.7S., 174° 47'.0E.
 - b) 36° 23'.1S., 174° 48'.5E.
2. Mariners are advised to exercise caution when navigating in the area.

* *Indicates new or revised entry*

Charts temporarily affected: NZ 52, NZ 53, NZ 522, NZ 532, NZ 5227, NZ305322

Royal New Zealand Navy
NI 63/2015

NZ 75(T)/15 NEW ZEALAND – South Island – East Coast – Lyttelton Harbour – Unlit Buoy.

1. The lit buoy, *Fl. Y5s* in position 43° 36'.00S., 172° 47'.70E. is temporarily extinguished until further notice.
2. Mariners are advised to exercise caution when navigating in the area.

Charts temporarily affected: NZ 632, NZ 6321, NZ400632, NZ506321

Lyttelton Port of Christchurch
NI 65/2015

III

CORRECTIONS TO NEW ZEALAND LIGHT LIST (NZ NTM Edition No. 6 dated 20 March 2015)

NEW ZEALAND NAUTICAL ALMANAC 2014/15 LIGHT LIST SECTION

| | | | | | | | |
|------|---------------|-----------------------|-----------|----|---|----------------------------|---------------------|
| 4074 | - S Mole Head | 39 57.00 174 58.90 | Fl G 1.5s | 10 | 5 | Green steel structure 5 | fl 0.4 TE 2015 * |
|------|---------------|-----------------------|-----------|----|---|----------------------------|---------------------|

(NI 51/2015)

IV

CORRECTIONS TO SAILING DIRECTIONS AND NEW ZEALAND PUBLICATIONS (NZ NTM Edition No. 6 dated 20 March 2015)

New Zealand Chart Catalogue 15th Edition, NZ 202

Page /Chart No.

Page 23

COOK STRAIT ZONE

NZ 463

Amend New Edition to, 3/2015

NP9 Antarctic Pilot (2014 Edition)

Antarctica – Hope Bay — Grunden Rock Light

289

Paragraph 5.44 4 lines 7-8 *Delete*

Antarctica – Port Lockroy — Bills Island Light

320

Paragraph 5.168 3 lines 1-2 *Delete*

Navarea VI warning 24/15
(SDD 2015000 020439)

[09/15]

NP13 Australia Pilot Volume 1 (2014 Edition)

North coast – Barrow Island — LNG Terminal

253

Paragraph 6.227 2 lines 1-3 *Delete*

After Paragraph 6.229 1 line 6 *Insert*:

- 2 **LNG Terminal.** The newly developed LNG terminal (20°48'·85S 115°29'·53E) lies close SE of the Materials Offloading Facility (6.228). The terminal has two berths, each with 15·0 m depth alongside.

The approach channel to the berth is marked by light beacons, and is dredged to a depth of 13·5 m.

Australian Chart 66
(SDD 2015000 019705)

[08/15]

NP13 Australia Pilot Volume 1 (2014 Edition)

Australia – Darwin – East Arm — Directions

160

4.125 2 lines 1-7 *Replace by*:

- 2 The alignment (121·9°) of these lights leads ESE, into East Arm, passing No 14 Light Buoy, marking the coastal bank extending NW from East Arm Port. A wreck lies about 250 m SSW of Light Buoy No 14, close SW of the leading line.

Australian Notice to Mariners 05/251/14; 17/813/14
(SDD 2014000 056617; 184667) [10/15]

**Australia – Darwin – East Arm — Directions;
Bladin Point**

161

Paragraph 4.125 4 *Replace by*:

- 4 A light beacon (lateral) marks the S extremity of shoal ground extending $\frac{3}{4}$ cable SSW of South Shell Island (12°29'·75S 130°53'·16E), and a light beacon (lateral) lies approximately 1½ cables S of the Island marking the E side of the entrance to the channel between the island and the area of partially drying flats extending ESE, which gives access for small craft to the shallow waters E of South Shell Island. Elizabeth River discharges into the head of East Arm.

After Paragraph 4.125 5 *Insert*:

4.125a

- 1 **Bladin Point LNG Plant**, on the S side of East Arm, lies $2\frac{1}{4}$ ESE of South Shell Island (12°29'·75S 130°53'·16E), between Preston Point and the mouth of the Elizabeth River. The plant is served by two jetties, extending NW and NE from Bladin Point. The NW jetty consists of two berths, with depths alongside from 12·1 m to 14 m. The NE jetty has three berths available with depths alongside ranging from 7·0m to 8·5m. The LNG plant is expected to be in full operation from 2016.

2 **Leading Lights:**

Front light (12°30'·61S 130°53'·76E) (triangle apex up)

Rear light (12°30'·67S 130°53'·83E) (triangle apex down)

- 3 The alignment (128·7°) of these lights leads SE, passing SW of South Shell Island, to the alignment of the following leading lights:

Front light (12°30'·47S 130°55'·27) (triangle apex up)

Rear light (12°30'·47S 130°55'·17) (triangle apex down)

The alignment of these lights (090°) leads 1 mile E to the NW jetty at Bladin Point.

Australian Notice to Mariners 3/165/15
(SDD 2015000 035409) [11/15]

NP13 Australia Pilot Volume 1 (2014 Edition)

Western Australia – Freemantle — AIS

299

After Paragraph 8.39 1 line 9 Insert:

No 4 Light Buoy (special) (31°59'·99S 115°40'·83E)

After Paragraph 8.39 2 line 14 Including existing Section IV Notice Week 27/14 Insert:

| | |
|-------------|-------------------|
| 31°59'·81S | Starboard lateral |
| 115°41'·50E | |
| 32°00'·26S | Starboard lateral |
| 115°41'·51E | |
| 31°59'·80S | Port lateral |
| 115°41'·70E | |
| 32°00'·26S | Port lateral |
| 115°41'·71E | |

Australian Notice to Mariners 03/170/15
(SDD 2015000 035409)

[11/15]

NP14 Australia Pilot Volume 2 (2013 Edition)

**Australia – Sydney – Sydney Cove —
Basins and berths; depths**

344

Paragraph 12.165 2 line 3 *For* 10·5 m *Read* 10 m

Australian Notice to Mariners 4/218/15
(SDD 2015000 042140)

[12/15]

NP15 Australia Pilot Volume 3 (2012 Edition)

Australia – Queensland – Hay Point — Berths

228

Paragraph 6.173 1 *Replace by:*

1 **Hay Point Services (HPS) berths** are situated at the head of the S conveyor jetty. Berth No 1 to S is 397 m in length and Berth No 2 is 408 m, both measurements between outer mooring dolphins, a third berth extends SSW from Berth No 1. Depths alongside are 16·6 m at Berth No 1, 16·7 m at No 2 and 19 m at the S berth. Lights indicating 15° approach angles to the berths are displayed from the wharf.

Australian Notice to Mariners 4/221/15
(SDD 2015000 042140)

[12/15]

**NP61 Pacific Islands Pilot Volume 2
(2011 Edition)**

Fiji Islands – Lautoka – Tivua Island — Light

274

Paragraph 8.224 1 line 1 *Replace by:*

- 1 Tivua Island (17°36'85S 177°20'84E), from the SW end of which a light is exhibited.

**Fiji Islands – Mamanuca Islands – Vomo and
Vomolailai Islands — Lights**

276

Paragraph 8.253 1 lines 1–6 *Replace by:*

- 1 Vomo Island (17°29'58S 177°16'04E) is volcanic with a flat summit, covered with grass and scrub. The NW side is a low peninsula covered with palms, at the extremity of which stands Vomolailai Island (17°29'09S 177°14'95E), precipitous, and from which a light is exhibited.

S of Vomo Island lies Cakau-Ni-Ika-Bula-Ira reef, from which a light (17°34'60S 177°15'36E) is exhibited. Vomo Island is visited by tourists.

Fiji Islands – Yasawa Group — Lights

285

Paragraph 8.335 1 line 7 *Replace by:*

...of the islands. A light (17°15'50S 177°08'41E) is exhibited from Koromasoli Point, the N end of Waya Island.

Paragraph 8.336 1 lines 3–4 *Replace by:*

...summit, a remarkable thumb shaped peak, lies on the S side of the island. A light (17°20'73S 177°09'23E) is exhibited from the E side of the island.

Paragraph 8.336 1 line 8 *Replace by:*

...wide. SE of Kuata Island lies Mouva Reef, from which a light (17°23'81S 177°11'24E) is exhibited.

After Paragraph 8.337 1 line 9 Insert:

- 2 A light (17°12'73S 177°10'13E) is exhibited from Tavuniko Point, at the SW end of the island.

Fijian Notice 02/15
(SDD 2015000 020030)

[09/15]

**NP62 Pacific Islands Pilot Volume 3
(2013 Edition)**

Hawaiian Islands – Molokai — Light

299

Paragraph 12.200 and heading *Replace by:*

**Spare
12.200**

300

After Paragraph 12.201 4 line 1 Insert:

Molokai Light (white tower, 42 m high) (21°12'57N 156°58'18W).

USCG Notice 39/19347/14
(SDD 2014000 207229)

[11/15]

V

NAVIGATIONAL WARNINGS

Warnings in force 18 March 2015

NAVAREA XIV

(South West Pacific)

- 96/14 FM NAVAREA XIV COORDINATOR 092000 UTC DEC 14
NAVAREA XIV 96/14
SOUTHERN OCEAN
VOLUNTARY SHIP REPORTING SYSTEM IN THE NEW ZEALAND SEARCH AND RESCUE AREA SOUTH OF 60-00S
1. THE NEW ZEALAND SEARCH AND RESCUE AUTHORITIES HAVE ESTABLISHED A VOLUNTARY SHIP REPORTING SYSTEM FOR ALL VESSELS OPERATING IN THE NZSAR REGION SOUTH OF 60-00S FOR THE PURPOSES OF ASSISTING THE SAR AUTHORITY IN COORDINATING SAR OPERATIONS IN THAT AREA.
2. AREA COVERED: 60-00S TO THE SOUTHERN EDGE OF THE ROSS SEA BOUNDED BY 163-00E TO 131-00W.
3. ALL VESSELS ARE REQUESTED TO NOTIFY TAUPO MARITIME RADIO ON ENTRY AND DEPARTURE INTO THE AREA AND ARE ALSO ENCOURAGED TO MAKE DAILY POSITION REPORTS. INFORMATION PROVIDED WILL BE USED FOR SAR PURPOSES ONLY.
4. TAUPO MARITIME RADIO CAN BE CONTACTED ON INMARSAT C 582 451 200 067, HF, EMAIL MARITIME@KORDIA.CO.NZ OR 00 64 4 550 5280.
- 13/15 FM NAVAREA XIV COORDINATOR 100400 UTC FEB 15
NAVAREA XIV 13/15
SOUTH PACIFIC OCEAN
TONGA HOME REEF CHART NZ 82 (T 82)
1. VOLCANIC ACTIVITY REPORTED IN VICINITY 19-00S 174-47W.
2. MARINERS ARE ADVISED GAS MAY BE PRESENT AT THE SEA SURFACE AND TO KEEP WATCH FOR DISCOLOURED WATER.
- 18/15 FM NAVAREA XIV COORDINATOR 162100 UTC FEB 15
NAVAREA XIV 18/15
SOUTH PACIFIC OCEAN
AVON ISLAND WESTWARDS TO AITUTAKI
1. UNDERWATER OPERATIONS BY VESSEL L'ATALANTE BETWEEN 19 FEB AND 3 APR 15 ALONG TRACKLINE JOINING:
A: 19-00S 155-00E
B: 19-00S 176-19E
C: 19-00S 160-06W
2. CANCEL THIS MESSAGE 040100 UTC APR 15.
- 25/15 FM NAVAREA XIV COORDINATOR 082350 UTC MAR 15
NAVAREA XIV 25/15
SOUTH PACIFIC OCEAN
KERMADEC ISLANDS, RAOUL ISLAND NORTHWARDS CHART NZ22 (INT 639) NZ14638 (INT 638)
1. UNDERWATER VOLCANIC ACTIVITY REPORTED IN VICINITY 25-53S 177-11W.
2. MARINERS ARE ADVISED GAS MAY BE PRESENT AT THE SEA SURFACE AND TO KEEP WATCH FOR DISCOLOURED WATER.

NZ Coastal Navigational Warnings

(Area Z)

- 27/15 FM: RCC NEW ZEALAND 090430 UTC FEB 15
COASTAL NAVIGATION WARNING 27/15
AREAS KAIPARA AND RAGLAN
1. SEISMIC SURVEY IN PROGRESS BY MV AQUILA EXPLORER / H3JN UNTIL APRIL 2015
IN AREA BOUNDED BY:
A. 33-30.00S 168-10.00E
B. 33-30.00S 171-50.00E
C. 35-02.00S 172-38.00E
D. 37-27.00S 174-22.00E
E. 37-48.00S 174-22.00E
F. 38-27.00S 174-02.00E
G. 38-30.00S 168-10.00E
2. AQUILA EXPLORER TOWING A STREAMER 5.7 MILES IN LENGTH. THE END OF THE
STREAMER IS MARKED BY A TAIL BUOY WITH CONTINUOUS FLASHING LIGHT.
SUPPORT VESSEL MV OCEAN PIONEER / ZM2582 IN ATTENDANCE. VESSELS
MONITORING VHF 16 AND 69. SIX MILE CLEARANCE FROM VESSEL AND TOWED
EQUIPMENT REQUESTED.
- 39/15 FM: RCC NEW ZEALAND 250050 UTC FEB 15
COASTAL NAVIGATION WARNING 39/15
AREAS RAGLAN AND STEPHENS
1. SEISMIC SURVEY BY MV POLAR DUKE COMMENCING 1 MARCH 2015 IN AREA
BOUNDED BY:
A. 39-07.54S 173-21.02E
B. 39-07.54S 173-41.38E
C. 39-37.25S 173-41.38E
D. 39-37.25S 173-21.02E
MV POLAR DUKE WILL BE TOWING TWELVE CABLES 7000 METRES LONG, END OF TOW
MARKED WITH YELLOW BUOYS LIT WITH WHITE LIGHTS FLASHING UNIFORM.
MV POLAR DUKE RESTRICTED IN ABILITY TO MANOEUVRE AND SUPPORTED BY
VESSELS MV GURU AND MV SANCO SKY.
2. MARINERS REQUESTED TO MAINTAIN SIX NAUTICAL MILE CLEARANCE FROM VESSEL
AND TOWED EQUIPMENT.
-

VI

CORRECTIONS TO ADMIRALTY LIST OF RADIO SIGNALS (NZ NTM Edition No. 6 dated 20 March 2015)

VOLUME 2, NP282, 2015/16

Published Wk 9/15
First updates in Wk 9/15
The 2014/15 edition is cancelled

RECORD OF UPDATES

PAGE ii, NEW EDITION, First Updates.

Insert:

**This edition was published in Wk 9/15
First updates issued in Wk 9/15**

UKHO 9/15

AUTOMATIC IDENTIFICATION SYSTEM (AIS)

PAGE 146, AUSTRALIA, below Port of Dampier Sea Lt Buoy.

Insert:

| | | | | | |
|---|--------------------------|--|--|------|--|
| Port Phillip South Channel Entrance Lt Buoy | 38° 17' 71S 144° 41' 15E | | | Real | |
| Port Phillip South Channel Lt Bn No 24 | 38° 17' 93S 144° 53' 92E | | | Real | |

Australian Notice 25/1229/14 (RSDRA2014000268147) 9/15

PAGE 146, AUSTRALIA, below Fremantle Approach Channel Lt Buoy No 3.

Insert:

| | | | | | |
|--|--------------------------|-----------|--|---------|--|
| Fremantle Approach Channel Port Cut 1 | 31° 59' 80S 115° 41' 70E | 995036012 | | Virtual | |
| Fremantle Approach Channel Port Cut 2 | 32° 00' 26S 115° 41' 71E | 995036014 | | Virtual | |
| Fremantle Approach Channel Starboard Cut 1 | 31° 59' 81S 115° 41' 50E | 995036011 | | Virtual | |
| Fremantle Approach Channel Starboard Cut 2 | 32° 00' 26S 115° 41' 51E | 995036013 | | Virtual | |

Australian Notice 3/170/15 (RSDRA2015000035409) 10/15

PAGE 146, AUSTRALIA, below Goods Island Rear Ldg Lt.

Insert:

| | | | | | |
|--------------------------|--------------------------|-----------|--|---------|--|
| Jervoise Bay AMC Shoal A | 32° 09' 60S 115° 44' 18E | 995036040 | | Virtual | |
| Note: Isolated Danger | | | | | |
| Jervoise Bay AMS Shoal F | 32° 09' 68S 115° 44' 89E | 995036041 | | Virtual | |
| Note: Isolated Danger | | | | | |

Australian Notice 3/170/15 (RSDRA2015000035409) 10/15

HYDROGRAPHIC NOTE

(For instructions, see next page)

New Zealand Hydrographic Authority
Land Information New Zealand
Radio New Zealand House
155 The Terrace
PO Box 5501
Wellington 6145
New Zealand

Tel: 0800 665 463 or +64 (0)4 460 0110

Fax: +64 (0)4 460 0161

Email: ntm@linz.govt.nz

Date Ref. No.

Name and address of ship or sender

.....
.....

Tel/Fax/Telex/Email of sender

General locality

Subject

Position. Lat. Long.....

Position fixing system used

Datum

Paper Chart/ENC affected Edition.....

Dated

Latest Notice to Mariners held.....

Publications affected (Edition No. and date of latest supplement, page no., ID no. etc)

Details:

A replacement copy of Chart No.
is required (see Instruction 4).

Signature of observer/reporter.....

HYDROGRAPHIC NOTE

Forwarding Information for Charts and Hydrographic Publications

Note: An acknowledgement of receipt will be sent and the information then used to the best advantage, which may mean immediate action or inclusion in a revision in due course. When a Notices to Mariners is issued, the sender's ship or name is quoted as authority unless (as sometimes happens) the information is also received in a foreign Notices to Mariners. An explanation of the use of contributions from all parts of the world would be too greater task and a further communication should only be expected when the information is of outstanding value or has unusual features.

INSTRUCTIONS:

1. Mariners are requested to notify New Zealand Hydrographic Authority, Land Information New Zealand, 155 The Terrace, PO Box 5501, Wellington 6145, New Zealand, when new or suspected dangers to navigation are discovered, changes observed in aids to navigation, or corrections to publications seem to be necessary. The Admiralty publication, *The Mariner's Handbook* (NP 100), Chapter 4, gives general instructions.
2. This form and its instructions have been designed to help both the sender and the recipient. It should be used, or followed, closely, whenever appropriate. Copies of this form may be obtained gratis from the New Zealand Hydrographic Authority at the address above, or in PDF format directly from the LINZ website, www.linz.govt.nz/hydro. Hydrographic Notes can also be sent from mobile devices using the Hydrographic Notes Application available for [Android](#) and [Apple](#) devices.
3. When a position is defined by sextant angles or bearings (true or magnetic being specified) more than two should be used in order to provide a check. Distances observed by radar should be quoted. However, when there is a series of fixes along a ship's course, only the method of fixing and the objects used need to be indicated. Latitude and longitude should only be used specifically to position the details when they have been fixed by astronomical observations or GPS and a full description of the method, equipment and datum used should be given.
4. Paper Charts: A cutting from the largest scale paper chart is the best medium for forwarding details, the alterations and additions being shown thereon in red. When requested, a new copy will be sent in replacement of a chart that has been used to forward information, or when extensive observations have involved defacement of the observer's chart. If it is preferred to show the amendments on a tracing of the largest scale chart (rather than the chart itself) these should be in red as above, but adequate detail from the chart must be traced in black ink to enable the amendments to be fitted correctly.

Electronic Navigational Charts (ENCs): A screen dump of the largest scale usage band ENC with the alterations and additions being shown thereon in red.

5. When soundings are obtained, *The Mariners Handbook* (NP 100) should be consulted. The echo sounding trace should be marked with times, depths, etc., and forwarded with the report. It is important to state whether the echo sounder is set to register depths below the surface, or below the keel; in the latter case the vessel's draught should be given. Time and date should be given in order that corrections for the height of the tide may be made where necessary. The make, name, and type of echo sounder set should also be given.
6. Modern echo sounders frequently record greater depths than the set's nominal range, e.g. with a set whose maximum is 500m a trace appearing at 50m may in fact be 550m or even 1,050m. Erroneous deep soundings beyond the sets nominal range can usually be recognised by the following:
 - (a) The trace being weaker than normal for the depth registered
 - (b) The trace appearing to pass through the transmission line
 - (c) The "feathery" nature of the trace.
7. Reports which cannot be confirmed or are lacking in certain details should not be withheld. Shortcomings should be stressed and any firm expectation of being able to check the information on a succeeding voyage should be mentioned.
8. Reports of shoal soundings, uncharted dangers and navigational aids out of order should, at the mariner's discretion, also be made by radio to the nearest coast radio station. The draught of modern tankers is such that any uncharted depth under 30 metres or 15 fathoms may be of sufficient importance to justify a radio message.