

NEW ZEALAND NOTICES TO MARINERS

Notices **NZ 76 – 85**

© Crown Copyright 2015. All rights Reserved. Permission is not required to make analogue copies of these Notices but such copies are not to be sold.

CONTENTS

- I [Explanatory Notes.](#)
 - II [New Zealand Notices to Mariners.](#)
 - III [Corrections to New Zealand Light List.](#)
 - IV [Corrections to Sailing Directions and New Zealand Publications.](#)
 - V [Navigational Warnings.](#)
 - VI [Corrections to Admiralty List of Radio Signals.](#)
-

New Zealand Notices to Mariners are the authority for correcting New Zealand charts within the New Zealand area of charting responsibility as shown in [Annual Notice No. 1](#).

Mariners are requested to immediately inform New Zealand Hydrographic Authority, Land Information New Zealand, 155 The Terrace, PO Box 5501, Wellington 6145, New Zealand, Phone: 0800 665 463 or +64 (0)4 460 0110, Fax: +64 (0)4 460 0161, email: ntm@linz.govt.nz, of the discovery of new or suspected dangers to navigation, or shortcomings in charts and publications. A copy of a Hydrographic Note, a convenient form on which to send such information, is included at the end of Section VI of the Fortnightly Notices to Mariners.

Changes or defects in aids to navigation should be reported to the Rescue Coordination Centre New Zealand (RCCNZ) via the nearest New Zealand Coastal Maritime Radio Station Phone: +64 (0)4 577 8030, Fax: +64 (0)4 577 8038 or +64 (0)4 577 8041, email: rccnz@maritimenz.govt.nz.

Copies of these Notices can be obtained from Land Information New Zealand, Maritime New Zealand, Principal Chart Agents at the major ports of New Zealand and the Internet: www.linz.govt.nz.

EXPLANATORY NOTES

Charts. The notices in Section II give instructions for the correction of charts. Geographical positions refer to the largest scale chart unless otherwise stated. They are normally given in degrees, minutes and decimals of a minute, but may occasionally quote seconds for convenience when plotting from the graduation of some older-style charts. Bearings are true reckoned clockwise from 000° to 359°; those relating to lights are given as seen by an observer from seaward. Symbols referred to are those shown in publication Chart 5011 (*INT 1*) Symbols and Abbreviations used on Admiralty Paper Charts, published by the United Kingdom Hydrographic Office.

Alterations to depth contours, deletion of depths to make way for new detail, etc. are not mentioned unless they have some navigational significance.

Block corrections or notes accompanying notices in Section II are placed after Section VI.

Temporary and Preliminary Notices. These are indicated by (T) or (P) after the notice number. A list of [\(T\) and \(P\) Notices in force](#) is published on the LINZ website and in the fortnightly Editions of Notices to Mariners. Charts are not corrected for them before issue; they should be corrected in pencil on receipt.

Light Lists. The detailed correction to the Light List is given in Section III and may not be published in the same edition as the chart correcting notice. The entire entry for each light is printed, and an asterisk (*) is shown under the column which contains an amendment. In the case of a new light, an asterisk (*) appears under all the columns. New and extensively altered entries are intended to be pasted in. It is recommended that a manuscript entry be made for all shorter corrections.

It is emphasized that the [List of Lights](#) is the authority for lights and that many alterations, especially those of a temporary but operational nature, may only be promulgated as corrections to the List of Lights.

Sailing Directions. Corrections to Sailing Directions are given in Section IV. It is recommended that such corrections be kept together in a file with the latest list of those in force on top. The file can then be consulted when using the Current Edition of the book to see if any notices affecting the area under consideration are extant. Corrections should not be pasted into the Current Edition of the book or Supplement.

New Zealand Publications. Corrections to New Zealand Publications are given in Section IV.

Navigational Warnings. NAVAREA XIV and NZ Coastal Navigational Warnings that are in force at the time of publication are given in Section V.

Radio Signals. When radio signals are affected by a notice the Admiralty List of Radio Signals reference number is quoted. The detailed correction to the List of Radio Signals is given in Section VI and may be published in a later edition than the chart correcting notice. It is recommended that such corrections be kept together in a file with the latest list of those in force on top. Corrections should not be pasted into the Current Edition of the book.

Correction of Charts and Publications by the User. New Zealand Notices to Mariners contain important information and should be used to keep the specified charts and books up to date.

THE USE OF CHARTS AND ASSOCIATED PUBLICATIONS

Reliance on Charts and Associated Publications. While every effort is made to ensure the accuracy of the information on New Zealand charts and other publications, it should be appreciated that it may not always be complete and up to date. The mariner must be the final judge of the reliance to be placed on the information given, bearing in mind their particular circumstances, local pilotage guidance and the judicious use of available navigational aids.

Charts. Charts should be used with prudence: there are areas where the source data are old, incomplete or of poor quality. The mariner should use the largest scale appropriate for his particular purpose; apart from being the most detailed, the larger scales are usually corrected first. When extensive new information (such as a new hydrographic survey) is received, some months may elapse before it can be fully incorporated in published charts. On small scale charts of ocean areas where hydrographic information is, in many cases, still sparse, charted shoals may be in error as regards position, least depth and extent. Undiscovered dangers may exist, particularly away from well-established routes.

Further guidance. The Mariner's Handbook (NP 100) gives a fuller explanation of the limitations of charts. All users should study it in their own interest.

ENC/ECDIS Data Presentation and Performance Check in Ships. The International Maritime Organization (IMO) has recently indicated its concerns about operating anomalies identified in some ECDIS that fail to display important new chart features.

The International Hydrographic Organization (IHO) has produced an ENC Data Presentation and Performance Check dataset that allows mariners to check their ECDIS. The check dataset is available through ENC service providers and from the IHO website (www.iho.int) which includes instructions.

Mariners are strongly recommended to use the dataset and report the results of their checks to help the IHO identify how the different brands of ECDIS display and handle chart information. Mariners are asked to also inform the IMO, national Hydrographic Offices, ECDIS manufacturers and others, so that they can take any corrective action that may be necessary.

In order to present the most comprehensive report possible to the IMO and to further assist in resolving the issues so far identified, the IHO is keen that as many ships as possible forward their results. Reports on the results can be sent via a form provided with the data or the results can be submitted on-line through a web-form.

All relevant documentation can be downloaded free from the IHO website at: www.iho.int.

II

NUMERICAL INDEX OF CHARTS AFFECTED
(NZ NTM Edition No. 7 dated 3 April 2015)

NZ Chart No.	INT Chart No.	ENC No.	Notice to Mariners
NZ 53			80(T)
NZ 66			85(T)
NZ 82 (T 82)		NZ300082	83(T)
NZ 286			82(T)
NZ 531		NZ300531	80(T)
NZ 615		NZ300615	81(T)
NZ 632			78
NZ 661		NZ300661	85(T)
NZ 2862			82(T)
NZ 4314		NZ404314	84(T)
NZ 5315		NZ505315	80(T)
NZ 5318			80(T)
NZ 5322			77
NZ 6151			81(T)
NZ 6152			81(T)
NZ 6321			78
NZ 6612		NZ506612	85(T)
NZ 14605	INT 605	NZ14605W	83(T)
NZ 14631	INT 631	NZ214631	83(T)
NZ 14638	INT 638		83(T)

NEW ZEALAND TEMPORARY AND PRELIMINARY NOTICES IN FORCE

(NZ NTM Edition No. 7 dated 3 April 2015)

NZ Notice	T/P	Charts Affected	Locality and Subject
		NZ Chart, ENC Cell	
242/09	P	NZ 42, NZ 4265	Kaipara Hr. Entrance: Depths
222/10	P	NZ 542	Whakatane: Depths
20/11	P	NZ 5411, NZ5412, NZ405411, NZ505412	Tauranga Hr.: Lights
202/11	P	NZ 6142, NZ606142	Port Nelson: Light, Beacon, Works in Progress
211/12	P	NZ 61, NZ 614, NZ300061, NZ300614, NZ506141	North Coast, Golden Bay & Tasman Bay: Lights
85/13	P	NZ 541, NZ 5411, NZ 5412, NZ 5413, NZ300541, NZ405411, NZ505412	East Coast, Tauranga, Port of Tauranga: Works
140/13	P	NZ 5314	East Coast, Mercury Islands, Rocky Bay, Coralie Bay, Orauaki Point, Te Whanga Bay, Korapuki Islands: Rocks
147/13	P	NZ 521, NZ300521	East Coast, Poor Knights Islands: Depths
156/13	P	NZ 541, NZ 5413, NZ300541, NZ405413	East Coast, Tauranga, Motiti Island: Depths
169/13	P	NZ 5411, NZ405411	East Coast, Tauranga Harbour, Katikati Entrance: Buoy
172/13	P	NZ 6152	North Coast, Havelock: Lights, Beacons
194/13	P	NZ 5124	East Coast, Bay of Islands, Kerikeri Inlet: Light Beacons
220/13	T	NZ 5612, NZ505612, NZ605612	East Coast, Napier Inner Harbour and Approaches: Dredging
221/13	P	NZ 4265	West Coast, Kaipara Harbour: Lights, Beacons, Buoys
242/13	T	NZ 53, NZ 532, NZ 5321, NZ 5324, NZ305322, NZ405321	East Coast, Auckland, Rakino Island: Light Unlit
41/14	P	NZ 268	Chatham Islands: Depths and Rocks
42/14	P	NZ 26, NZ 27, NZ 268	Chatham Islands: Areas to be avoided
45/14	P	NZ 632, NZ 6324, NZ406324	East Coast, Akaroa Harbour: Area of Restricted Access
132/14	T	NZ 6321, NZ506321, NZ606321	East Coast, Lyttelton Harbour: Light, Beacon
138/14	T	NZ 23 (INT 640), NZ 26, NZ 55, NZ 56, NZ 14600 (INT 600), NZ200023, NZ300055, NZ300056, NZ14600E	East Coast, Poverty Bay, Eastwards: Scientific Instruments
139/14	P	NZ 5612	East Coast, Approaches to Napier: Light Sectors
140/14	T	NZ 23 (INT 640), NZ 26, NZ 58, NZ 14600 (INT 600), NZ200023, NZ300058, NZ14600E	East Coast, Honeycomb Southeastwards: Scientific Instruments
141/14	T	NZ 23 (INT 640), NZ 25 (INT 648), NZ 45, NZ 48, NZ200023, NZ300045	West Coast, South Taranaki Bight: Seabed Obstructions
156/14	P	NZ 82 (T 82), NZ 8238 (T 8238), NZ 8247 (T 8247), NZ 8248 (T 8248), NZ8259 (T 8259), NZ300082, NZ508238, NZ608238	Kingdom of Tonga, Ha'apai Group: Navigation Aids
171/14	P	NZ 521, NZ300521	East Coast, Whangarei Harbour: Directional light
210/14	P	NZ 8215, NZ508215	Kingdom of Tonga, Niuatoputapu: Navigation Aids
211/14	P	NZ 82 (T 82), NZ 827 (T 827), NZ 8275 (T 8275), NZ 8277 (T 8277), NZ300827, NZ408275, NZ508277	Kingdom of Tonga, Tongatapu: Navigation Aids
213/14	T	NZ 8655, NZ508655	Samoa, Approaches to Apia Harbour: Buoys
218/14	T	NZ 4315, NZ504315, NZ604315	West Coast, Onehunga Wharf: Berth Depths
224/14	P	NZ 6422, NZ406422, NZ506422	East Coast; Timaru Harbour: Works, Exclusion Zone and Buoy
238/14	P	NZ 822 (T 822), NZ 8225 (T 8225), NZ400822, NZ508225	Kingdom of Tonga, Vava'u Group, Neiafu Harbour: Prohibited Area
239/14	T	NZ 521, NZ5215, NZ300521, NZ505215	East Coast, Whangarei Harbour: Works
243/14	P	NZ 5113	East Coast, Houhora & Rangaunu Harbour: Aids to Navigation
245/14	P	NZ 531, NZ 534, NZ 5318, NZ300531	East Coast, Mercury Islands, Mercury Bay: Depths, Rocks
246/14	T	NZ 61, NZ 614, NZ 6144, NZ300614, NZ406144	North Coast, Tasman Bay and Golden Bay: Spat Catching Areas
249/14	T	NZ 5321, NZ 5322, NZ405321, NZ505322	East Coast, Auckland Harbour, Takapuna Beach: Research Buoy
251/14	T	NZ 54, NZ 541, NZ 542, NZ 5413, NZ300541, NZ405413	East Coast, Tauranga, Astrolabe Reef: Exclusion Zone and Waverider Buoy
261/14	T	NZ 522, NZ 532, NZ 5227, NZ305322	East Coast, Kawau Bay, Matakana River: Works in Progress
263/14	P	NZ 62, NZ 63, NZ 6212, NZ300062, NZ462122	East Coast, Kaikoura: Marine Reserve
264/14	P	NZ 63, NZ 64, NZ 632, NZ 6324, NZ300063, NZ406324	East Coast, Banks Peninsula, Akaroa Harbour: Marine Reserve
275/14	P	NZ 8655, NZ508655	Samoa, Apia Harbour: Buoys and Breakwater
22/15	P	NZ 45, NZ 48, NZ300045	West Coast, Cape Egmont Westwards: Protected Area

II

NZ Notice	T/P	Charts Affected	Locality and Subject
		NZ Chart, ENC Cell	
24/15	P	NZ 82 (T 82), NZ 822 (T 822), NZ 8225 (T 8225), NZ300082, NZ400822, NZ508225	Kingdom of Tonga, Vava'u Group: Navigation Aids
27/15	T		Maritime Safety Broadcasts
28/15	T	NZ 21 (INT 641), NZ 23 (INT 640), NZ 41, NZ 42, NZ 43, NZ 443, NZ 4111, NZ 14061 (INT 61), NZ 14600 (INT 600), NZ 14601 (INT 601), NZ 14602 (INT 602), NZ 14605 (INT 605), NZ14600E, NZ200021, NZ300023, NZ300041, NZ300042, NZ300043, NZ300443	West Coast: Seismic Survey
29/15	T	NZ 632, NZ 6321, NZ400632, NZ506321, NZ606321	East Coast, Lyttelton Harbour, Sticking Point Eastwards: Exclusion Zone
30/15	T	NZ 25 (INT 648), NZ 64, NZ 14600 (INT 600), NZ 14601 (INT 601), NZ14600E, NZ200025, NZ300064	East Coast, Otago Peninsula Eastwards: Seismic Survey
47/15	T	NZ 21 (INT 641), NZ 23 (INT 640), NZ 25 (INT 648), NZ 43, NZ 45, NZ 48, NZ 443, NZ 14060 (INT 60), NZ 14061 (INT 61), NZ 14600 (INT 600), NZ 14601 (INT 601), NZ14600E, NZ200023, NZ300045, NZ300443	West Coast, Cape Egmont Westwards: Subsea Construction
48/15	T	NZ 24, NZ 25 (INT 648), NZ 29, NZ 68, NZ 14060 (INT 60), NZ 14061 (INT 61), NZ 14065 (INT 65), NZ 14600 (INT 600), NZ 14601 (INT 601), NZ14600E, NZ200025, NZ300068	South Island, Nugget Point Southward: Seismic Survey
49/15	T	NZ 7142, NZ407142, NZ507142	West Coast, Greymouth Harbour: Depths
51/15	T	NZ 14638 (INT 638)	Fiji, Viti Levu, Vanua Levu & Southern Lau Group: Lights
56/15	T	NZ 23 (INT 640), NZ 25 (INT 648), NZ 45, NZ 48, NZ200023, NZ300045	West Coast, South Taranaki Bight: Drilling Operations
58/15	T	NZ 6422, NZ406422	East Coast, Timaru: Seabed Obstruction
59/15	T	NZ 14065 (INT 65), NZ 14900 (INT 900), NZ14065E, NZ21490E	Ross Sea, Terra Nova Bay, Gerlache Inlet: Scientific Instrument
68/15	T	NZ 45, NZ 48, NZ 4541, NZ300045	West Coast, Wanganui, South Mole Head: Light Unlit
71/15	T	NZ 4314, NZ404314	West Coast, Manukau Harbour Entrance: Depths
73/15	P	NZ 614, NZ 615, NZ 6151, NZ 6152, NZ 6153, NZ 6154, NZ300614, NZ300615, NZ461531, NZ461532, NZ561541, NZ561542, NZ661542	Marlborough Sounds: Use of Automated Navigation Systems
74/15	T	NZ 52, NZ 53, NZ 522, NZ 532, NZ 5227, NZ305322	East Coast, Kawau Bay: Scientific Instruments
75/15	T	NZ 632, NZ 6321, NZ400632, NZ506321	East Coast, Lyttelton Harbour: Unlit Buoy
80/15	T	NZ 53, NZ 531, NZ 5315, NZ 5318, NZ300531, NZ505315	East Coast, Mercury Bay: Scientific Instruments
84/15	T	NZ 4314, NZ404314	West Coast, Manukau Harbour, Huia Bank: Buoy
85/15	T	NZ 66, NZ 661, NZ 6612, NZ300661, NZ506612	East Coast, Approaches to Otago Harbour: Scientific Instruments

NZ 76/15 NEW ZEALAND PUBLICATIONS – Raster Navigational Charts (RNCs).

From 3 April 2015, the NZMariner BSB cumulative update file for March 2015 will be available from the LINZ website <http://www.linz.govt.nz/sea/charts/nzmariner-official-raster-navigational-charts-rncs>.

NZMariner Raster Navigational Charts (RNCs) can be used only in conjunction with compatible viewing software called Electronic Charting Systems (ECS).

For compliance with New Zealand legal requirements for nautical charts and publications please refer to Maritime Rules Part 25, as supported by Maritime New Zealand Marine Guidance Notice 8 'Use of Electronic Charts, ECDIS and ENC's in New Zealand' available from the Maritime New Zealand website www.maritimenz.govt.nz/Commercial/Shipping-safety/Safety-updates/Guidance-notices.asp.

Further details are included in the Annual New Zealand Notices to Mariners, No.1 which can be found in the New Zealand Nautical Almanac (NZ 204) and on the LINZ website www.linz.govt.nz.

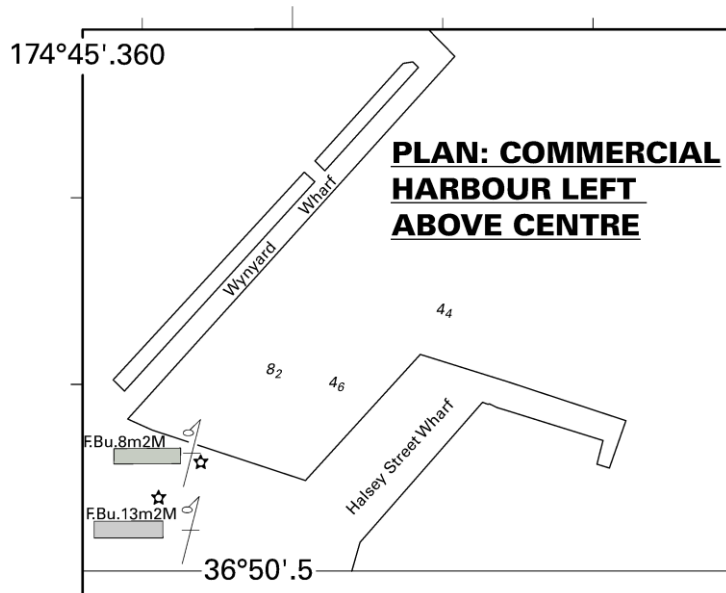
New Zealand Hydrographic Authority
NI 67/2015

NZ 77/15 NEW ZEALAND – North Island – East Coast – Auckland – Waitemata Harbour – Commercial Harbour – Light.

Chart NZ 5322 (Plan: Commercial Harbour) [231/14]

Delete legend, (Neon \triangle), at light 36° 50'.442S., 174° 45'.438E.
 legend, (Neon \square), at light 36° 50'.461S., 174° 45'.411E.

Ports of Auckland
 NZ Light List: 3798, 3798.1
 NI 69/2015



<i>Issued as a guide to chart correction.</i>		<i>Use in conjunction with the appropriate NZ Notice to Mariners.</i>	
LAST CORRECTION	NZ NTM No.	CHART No.	
NZ 231/14	NZ 77/15	NZ 5322	

NZ 78/15 NEW ZEALAND – South Island – East Coast – Banks Peninsula – Mussel Farms.

Chart NZ 632 [61/14]

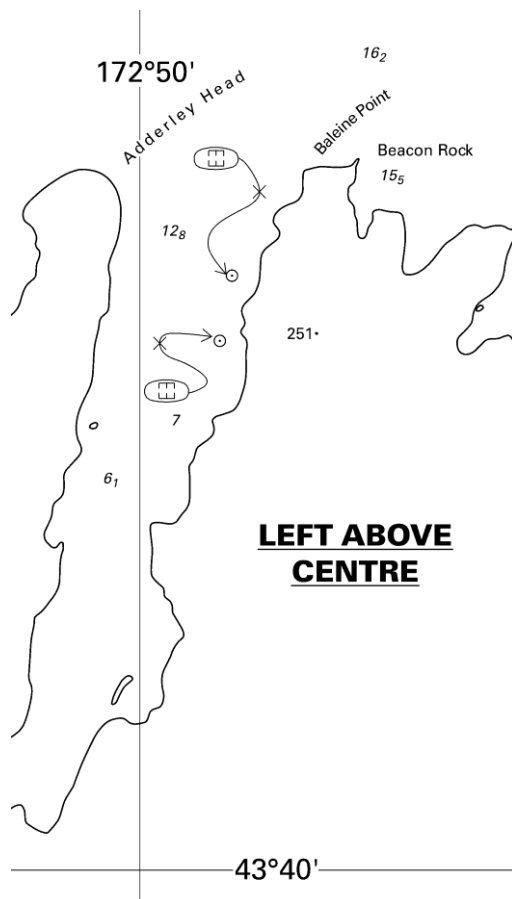
Insert  43° 36'.81S., 172° 50'.68E.
 43° 37'.16S., 172° 50'.59E.

Chart NZ 6321 [262/13]

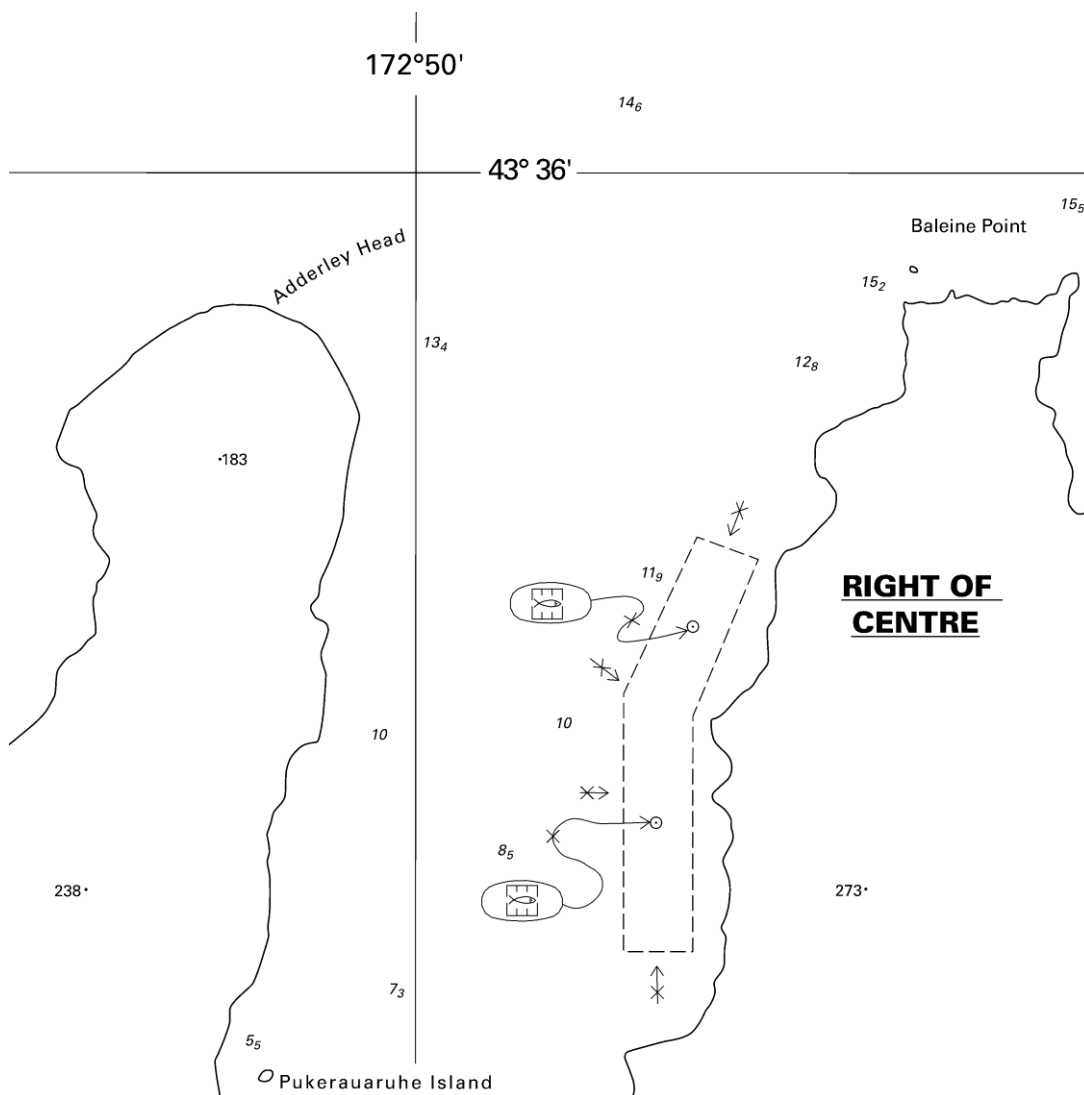
Insert Marine Farm, - - - - - , joining: 43° 36'.65S., 172° 50'.69E.
 43° 36'.69S., 172° 50'.84E.
 43° 36'.97S., 172° 50'.68E.
 43° 37'.39S., 172° 50'.68E.
 43° 37'.39S., 172° 50'.51E.
 43° 36'.93S., 172° 50'.51E.

 43° 36'.81S., 172° 50'.68E.
 43° 37'.16S., 172° 50'.59E.

New Zealand Hydrographic Authority
NI 50/2015



<i>Issued as a guide to chart correction.</i>		<i>Use in conjunction with the appropriate NZ Notice to Mariners.</i>	
LAST CORRECTION	NZ NTM No.	CHART No.	
NZ 61/14	NZ 78/15	NZ 632	



<i>Issued as a guide to chart correction.</i>		<i>Use in conjunction with the appropriate NZ Notice to Mariners.</i>	
LAST CORRECTION	NZ NTM No.	CHART No.	
NZ 262/13	NZ 78/15	NZ 6321	

NZ 79/15 NEW ZEALAND PUBLICATIONS – Cumulative List of New Zealand Notices to Mariners.

The Cumulative List of New Zealand Notices to Mariners, corrected up to Edition 7/15 dated 3 April 2015 is attached as an accompanying supplement to this Edition.

New Zealand Hydrographic Authority
NI 66/2015

NZ 80(T)/15 NEW ZEALAND – North Island – East Coast – Mercury Bay – Scientific Instruments.

1. On or about the 8th April 2015 scientific instruments will be deployed in the following approximate positions until May 2015:

<i>Position</i>	<i>Description</i>	<i>Remarks</i>
a) 36° 47'.91S., 175° 45'.72E.	Seabed mounted	Unmarked
b) 36° 48'.36S., 175° 44'.49E.	Seabed mounted	Unmarked
c) 36° 49'.37S., 175° 44'.49E.	Seabed mounted	Unmarked
d) 36° 48'.79S., 175° 43'.51E.	Seabed mounted	Unmarked

2. Mariners are advised to exercise caution when navigating in the area.

Charts temporarily affected: NZ 53, NZ 531, NZ 5315, NZ 5318, NZ300531, NZ505315

University of Waikato
NI 72/2015

NZ 81(T)/15 NEW ZEALAND – South Island – North Coast – Marlborough Sounds – Port Ligar, Forsyth Bay, Beatrix Bay – Scientific Instruments Recovered.

Former notice – NZ 38(T)/15 is cancelled.

Cancel this notice on receipt.

Charts formerly affected: NZ 615, NZ 6151, NZ 6152, NZ300615

Cawthron Institute
NI 68/2015

NZ 82(T)/15 NEW ZEALAND – Southern Ocean – Auckland Islands – Scientific Instruments Recovered.

Former notice – NZ 50(T)/15 is cancelled.

Cancel this notice on receipt.

Charts formerly affected: NZ 286, NZ 2862

IX Survey Australia PTY LTD.
NI 70/2015

NZ 83(T)/15 SOUTH WEST PACIFIC – Kingdom of Tonga – Hunga Ha’apai Southeastwards & Vava’u Southwestwards – Volcanic Activity Ceased.

Former notice – NZ 52(T)/15 is cancelled.

Cancel this notice on receipt.

Charts formerly affected: NZ 82 (T 82), NZ 14605 (INT 605), NZ 14631 (INT 631), NZ 14638 (INT 638), NZ14605W, NZ214631, NZ300082

Natural Resources Tonga
NI 75/2015

NZ 84(T)/15 NEW ZEALAND – North Island – West Coast – Manukau Harbour – Huia Bank – Buoy.

1. The Huia Bank port lateral buoy *F(2)R.6s* in position 37° 02'.11S., 174° 34'.11E. is missing.
2. Mariners are advised to exercise caution when navigating in the area.

Charts temporarily affected: NZ 4314, NZ404314

Ports of Auckland
NI 77/2015

NZ 85(T)/15 NEW ZEALAND – South Island – East Coast – Approaches to Otago Harbour – Scientific Instruments.

1. A seabed current meter marked by a lit yellow buoy, *F(5)Y.20s* has been deployed in the following position until further notice:

45° 45'.24S., 170° 42'.42E.

2. Lit yellow scientific buoys, *F(5).Y.20s* have been deployed in the following positions until further notice:

45° 44'.58S., 170° 47'.91E.

45° 43'.56S., 170° 47'.15E.

45° 37'.02S., 170° 42'.99E.

3. Mariners are advised to exercise caution when navigating in the area.

Charts temporarily affected: NZ 66, NZ 661, NZ 6612, NZ300661, NZ506612

Port Otago Ltd.
NI 76/2015

III

CORRECTIONS TO NEW ZEALAND LIGHT LIST

(NZ NTM Edition No. 7 dated 3 April 2015)

NEW ZEALAND NAUTICAL ALMANAC 2014/15 LIGHT LIST SECTION

3798	Wynyard Wharf Lts in line 229°45'. Front	36 50.44 174 45.44	F B	8	2	Yellow \triangle on building	LED
						*	
3798.1	- - - Rear. 55 m from front	36 50.46 174 45.41	F B	13	2	Yellow \square on building	LED
						*	

(NI 69/2015)

IV

CORRECTIONS TO SAILING DIRECTIONS AND NEW ZEALAND PUBLICATIONS

(NZ NTM Edition No. 7 dated 3 April 2015)

NP13 Australia Pilot Volume 1 (2014 Edition)

South West Australia – Fremantle Harbour —
AIS

299

After Paragraph 8.39 2 line 14 including existing Section IV
Notices Weeks 27/14 and 11/15 *Insert*:

Berthing areas

8.39a

- 1 To mark the southern extremity for ship manoeuvring and berthing, Virtual AIS (Special Purpose) have been established in the following positions:

32°02'44S 115°45'12E Wongara North
32°02'50N 115°45'03E Wongara South

Australian Notice 84(P)2015
(SDD 2015000 014259)

[13/15]

NP13 Australia Pilot Volume 1 (2014 Edition)

South Australia – Robe — Racon

411

Paragraph 13.11 1 line 2 *Delete*

414

Paragraph 13.29 1 line 2 *Delete*

Australian Notice to Mariners 05/280/15
(SDD 2015000 056333)

[14/15]

(NI 74/2015)

V

NAVIGATIONAL WARNINGS

Warnings in force 1 April 2015

NAVAREA XIV

(South West Pacific)

- 96/14 FM NAVAREA XIV COORDINATOR 092000 UTC DEC 14
NAVAREA XIV 96/14
SOUTHERN OCEAN
VOLUNTARY SHIP REPORTING SYSTEM IN THE NEW ZEALAND SEARCH AND RESCUE AREA SOUTH OF 60-00S
1. THE NEW ZEALAND SEARCH AND RESCUE AUTHORITIES HAVE ESTABLISHED A VOLUNTARY SHIP REPORTING SYSTEM FOR ALL VESSELS OPERATING IN THE NZSAR REGION SOUTH OF 60-00S FOR THE PURPOSES OF ASSISTING THE SAR AUTHORITY IN COORDINATING SAR OPERATIONS IN THAT AREA.
2. AREA COVERED: 60-00S TO THE SOUTHERN EDGE OF THE ROSS SEA BOUNDED BY 163-00E TO 131-00W.
3. ALL VESSELS ARE REQUESTED TO NOTIFY TAUPO MARITIME RADIO ON ENTRY AND DEPARTURE INTO THE AREA AND ARE ALSO ENCOURAGED TO MAKE DAILY POSITION REPORTS. INFORMATION PROVIDED WILL BE USED FOR SAR PURPOSES ONLY.
4. TAUPO MARITIME RADIO CAN BE CONTACTED ON INMARSAT C 582 451 200 067, HF, EMAIL MARITIME@KORDIA.CO.NZ OR 00 64 4 550 5280.
- 18/15 FM NAVAREA XIV COORDINATOR 162100 UTC FEB 15
NAVAREA XIV 18/15
SOUTH PACIFIC OCEAN
AVON ISLAND WESTWARDS TO AITUTAKI
1. UNDERWATER OPERATIONS BY VESSEL L'ATALANTE BETWEEN 19 FEB AND 3 APR 15 ALONG TRACKLINE JOINING:
A: 19-00S 155-00E
B: 19-00S 176-19E
C: 19-00S 160-06W
2. CANCEL THIS MESSAGE 040100 UTC APR 15.
- 36/15 FM NAVAREA XIV COORDINATOR 302300 UTC MAR 15
NAVAREA XIV 36/15
SOUTH PACIFIC OCEAN
FIJI, VITI LEVU, MAMANUCA GROUP CHART NZ 14638 (INT 638)
1. ABANDONED 25M FISHING VESSEL JULAMARI REPORTED ADRIFT IN VICINITY 17-31.98S 176-49.14E AT 290049 UTC MAR 15.
2. CANCEL THIS MESSAGE 022300 UTC APR 15.

NZ Coastal Navigational Warnings

(Area Z)

- 27/15 FM: RCC NEW ZEALAND 090430 UTC FEB 15
COASTAL NAVIGATION WARNING 27/15
AREAS KAIPARA AND RAGLAN
1. SEISMIC SURVEY IN PROGRESS BY MV AQUILA EXPLORER / H3JN UNTIL APRIL 2015 IN AREA BOUNDED BY:
A. 33-30.00S 168-10.00E
B. 33-30.00S 171-50.00E
C. 35-02.00S 172-38.00E
D. 37-27.00S 174-22.00E
E. 37-48.00S 174-22.00E
F. 38-27.00S 174-02.00E
G. 38-30.00S 168-10.00E
2. AQUILA EXPLORER TOWING A STREAMER 5.7 MILES IN LENGTH. THE END OF THE STREAMER IS MARKED BY A TAIL BUOY WITH CONTINUOUS FLASHING LIGHT. SUPPORT VESSEL MV OCEAN PIONEER / ZM2582 IN ATTENDANCE. VESSELS MONITORING VHF 16 AND 69. SIX MILE CLEARANCE FROM VESSEL AND TOWED EQUIPMENT REQUESTED.

55/15 FM: RCC NEW ZEALAND 270930 UTC MAR 15
 COASTAL NAVIGATION WARNING 55/15
 AREA PUYSEGUR / FOVEAUX
 1. LIVE FIRING 311700 UTC MAR 15 TO 010700 UTC APR 15. 20NM RADIUS BASED ON
 POSITION 51-03.00S 166-30.00E
 2. CANCEL THIS MESSAGE 010800 UTC APR 15

VI

CORRECTIONS TO ADMIRALTY LIST OF RADIO SIGNALS

(NZ NTM Edition No. 7 dated 3 April 2015)

AUTOMATIC IDENTIFICATION SYSTEM (AIS)

PAGE 146, AUSTRALIA, below Port of Dampier Sea Lt Buoy.

Insert:

Port Phillip South Channel East	38°19'49S 144°54'51E	995036007		Virtual	
---------------------------------	----------------------	-----------	--	---------	--

[Australian Notice 4/235/15 \(RSDRA2015000042140\) 13/15](#)

PAGE 146, AUSTRALIA, below Port Phillip South Channel Lt Bn No 24.

Insert:

Port Phillip South Channel West	38°17'40S 144°40'98E	995036006		Virtual	
---------------------------------	----------------------	-----------	--	---------	--

(former update 9/15)

[Australian Notice 4/235/15 \(RSDRA2015000042140\) 13/15](#)

PAGE 146, AUSTRALIA.

Darwin Lt Buoy No 5

Delete entry

[Australian Notice 4/224/15 \(RSDRA2015000042140\) 14/15](#)

PAGE 146, AUSTRALIA, below Darwin Lt Buoy No 5.

Insert:

Darwin Lt Buoy No 5 (West Point)	12°23'52S 130°44'68E	995031026		Real	
----------------------------------	----------------------	-----------	--	------	--

[Australian Notice 4/224/15 \(RSDRA2015000042140\) 14/15](#)

PAGE 146, AUSTRALIA.
Darwin Lt Buoy No 7 (West Point)
Delete entry

Australian Notice 4/224/15 (RSDRA2015000042140) 14/15

PAGE 146, AUSTRALIA.
Darwin Lt Buoy No 8 (Bennett Shoal)
Delete entry and replace by:

Darwin Lt Buoy No 8 (Bennett Shoal)	12°28'08S 130°49'25E	995031027		Real	
-------------------------------------	----------------------	-----------	--	------	--

Australian Notice 5/276/15 (RSDRA2015000056333) 14/15

PAGE 146, AUSTRALIA.
Darwin Lt Buoy No 12
Delete entry

Australian Notice 5/276/15 (RSDRA2015000056333) 14/15

(NI 73/2015)

HYDROGRAPHIC NOTE

(For instructions, see next page)

New Zealand Hydrographic Authority
Land Information New Zealand
Radio New Zealand House
155 The Terrace
PO Box 5501
Wellington 6145
New Zealand

Tel: 0800 665 463 or +64 (0)4 460 0110

Fax: +64 (0)4 460 0161

Email: ntm@linz.govt.nz

Date Ref. No.....

Name and address of ship or sender
.....
.....

Tel/Fax/Telex/Email of sender

General locality

Subject

Position. Lat. Long.

Position fixing system used

Datum

Paper Chart/ENC affected Edition.....

Dated

Latest Notice to Mariners held

Publications affected (Edition No. and date of latest supplement, page no., ID no. etc)

Details:

A replacement copy of Chart No.....
is required (see Instruction 4).

Signature of observer/reporter.....

HYDROGRAPHIC NOTE

Forwarding Information for Charts and Hydrographic Publications

Note: An acknowledgement of receipt will be sent and the information then used to the best advantage, which may mean immediate action or inclusion in a revision in due course. When a Notices to Mariners is issued, the sender's ship or name is quoted as authority unless (as sometimes happens) the information is also received in a foreign Notices to Mariners. An explanation of the use of contributions from all parts of the world would be too greater task and a further communication should only be expected when the information is of outstanding value or has unusual features.

INSTRUCTIONS:

1. Mariners are requested to notify New Zealand Hydrographic Authority, Land Information New Zealand, 155 The Terrace, PO Box 5501, Wellington 6145, New Zealand, when new or suspected dangers to navigation are discovered, changes observed in aids to navigation, or corrections to publications seem to be necessary. The Admiralty publication, *The Mariner's Handbook* (NP 100), Chapter 4, gives general instructions.
2. This form and its instructions have been designed to help both the sender and the recipient. It should be used, or followed, closely, whenever appropriate. Copies of this form may be obtained gratis from the New Zealand Hydrographic Authority at the address above, or in PDF format directly from the LINZ website, www.linz.govt.nz/hydro. Hydrographic Notes can also be sent from mobile devices using the Hydrographic Notes Application available for [Android](#) and [Apple](#) devices.
3. When a position is defined by sextant angles or bearings (true or magnetic being specified) more than two should be used in order to provide a check. Distances observed by radar should be quoted. However, when there is a series of fixes along a ship's course, only the method of fixing and the objects used need to be indicated. Latitude and longitude should only be used specifically to position the details when they have been fixed by astronomical observations or GPS and a full description of the method, equipment and datum used should be given.
4. Paper Charts: A cutting from the largest scale paper chart is the best medium for forwarding details, the alterations and additions being shown thereon in red. When requested, a new copy will be sent in replacement of a chart that has been used to forward information, or when extensive observations have involved defacement of the observer's chart. If it is preferred to show the amendments on a tracing of the largest scale chart (rather than the chart itself) these should be in red as above, but adequate detail from the chart must be traced in black ink to enable the amendments to be fitted correctly.

Electronic Navigational Charts (ENCs): A screen dump of the largest scale usage band ENC with the alterations and additions being shown thereon in red.
5. When soundings are obtained, *The Mariners Handbook* (NP 100) should be consulted. The echo sounding trace should be marked with times, depths, etc., and forwarded with the report. It is important to state whether the echo sounder is set to register depths below the surface, or below the keel; in the latter case the vessel's draught should be given. Time and date should be given in order that corrections for the height of the tide may be made where necessary. The make, name, and type of echo sounder set should also be given.
6. Modern echo sounders frequently record greater depths than the set's nominal range, e.g. with a set whose maximum is 500m a trace appearing at 50m may in fact be 550m or even 1,050m. Erroneous deep soundings beyond the sets nominal range can usually be recognised by the following:
 - (a) The trace being weaker than normal for the depth registered
 - (b) The trace appearing to pass through the transmission line
 - (c) The "feathery" nature of the trace.
7. Reports which cannot be confirmed or are lacking in certain details should not be withheld. Shortcomings should be stressed and any firm expectation of being able to check the information on a succeeding voyage should be mentioned.
8. Reports of shoal soundings, uncharted dangers and navigational aids out of order should, at the mariner's discretion, also be made by radio to the nearest coast radio station. The draught of modern tankers is such that any uncharted depth under 30 metres or 15 fathoms may be of sufficient importance to justify a radio message.

CUMULATIVE LIST OF NEW ZEALAND NOTICES TO MARINERS

3 April 2015

GENERAL INFORMATION

This list records the date of issue of the current edition of each chart and of subsequent relevant New Zealand Notices to Mariners up to and including **Edition No. 7 of 3 April 2015**. Users of this list are reminded that the authoritative source for information concerning current editions of New Zealand charts and the corrections that affect them are the Editions of New Zealand Notices to Mariners.

THE CURRENT EDITION OF A CHART

When a new chart or new edition is published the date of publication is shown in the bottom outside margin of the chart. A new edition of a chart, on being published and issued as notified by a Notice to Mariners, becomes the current edition and the previous edition is superseded. Withdrawn charts and superseded editions should not be used for navigation; nor should current editions that have not been corrected for relevant Notices to Mariners.

Published by Land Information New Zealand

For further information contact

New Zealand Hydrographic Authority
Land Information New Zealand
Radio New Zealand House
155 The Terrace
PO Box 5501
Wellington 6145
New Zealand

Phone: 0800 665 463 or +64 (0)4 460 0110
Fax: +64 (0)4 460 0161

E-mail: ntm@linz.govt.nz
Website: www.linz.govt.nz

NZ 21 (INT 641)	Apr 2005	2005-163-248, 2006-23, 2007-26-94-131-180, 2008-31-134, 2009-43-199, 2011-216
NZ 22 (INT 639)	Jun 2012	2012-151
NZ 23 (INT 640)	Jun 2012	2012-204, 2013-62-66
NZ 24	Apr 2005	2007-209, 2008-101, 2013-83, 2014-152
NZ 25 (INT 648)	Jun 2012	2012-214, 2013-62-66-83, 2014-152
NZ 26	Apr 2005	2005-163, 2006-32
NZ 27	Apr 2005	
NZ 28	Apr 2005	
NZ 29	Apr 2005	2005-206
NZ 31	Apr 2005	
NZ 41	Jan 2003	2003-119, 2004-219, 2005-135
NZ 42	Apr 2001	2003-119, 2004-219, 2005-135
NZ 43	Jun 1999	1999-326, 2000-201-208, 2002-118, 2003-143, 2004-101, 2007-69-94-119-120-131, 2008-134, 2009-43, 2010-130, 2011-216, 2012-73
NZ 45	Jul 2001	2003-114-149, 2004-100, 2006-128-160, 2007-26-94-105-124-180, 2008-31-240, 2012-66-73, 2013-62-66, 2014-247
NZ 46	Jul 2000	2000-365-417-420, 2001-153-204-205, 2002-104, 2003-57-131-149-175, 2004-29-53-80, 2005-49-127-245, 2009-186, 2010-123-174, 2012-145, 2013-50-251, 2015-66
NZ 48	Apr 2000	2000-417-420, 2001-167-195-241, 2003-29-114-131-143-149, 2004-108-109-126, 2006-128-160, 2007-26-53-94-119-124-131-180, 2008-31-240, 2011-25, 2012-66-73, 2013-50-62-66, 2014-77
NZ 51	Apr 2001	2003-119, 2004-219, 2005-135, 2007-45, 2008-64, 2014-32
NZ 52	Jul 2004	2005-167, 2006-23, 2008-77-248, 2009-199, 2010-53-205, 2011-115-199-207, 2012-36-46-98-172, 2014-32-48
NZ 53	Jun 2012	2012-178, 2013-177, 2014-48
NZ 54	Jul 1997	1997-333, 1998-109-122-123-233, 2000-220-338-402, 2002-25-94-135, 2003-142, 2005-95, 2007-83, 2013-44
NZ 55	Apr 1998	2000-176-253, 2002-94, 2004-47-88, 2010-26
NZ 56	Sep 2001	2006-32-79-227, 2007-25, 2013-78, 2014-87
NZ 57	Sep 2001	
NZ 58	Sep 2001	2012-72
NZ 61	Apr 1999	1999-452, 2000-420, 2001-153-195-241-248, 2002-143, 2003-29-120, 2004-89-109-207, 2006-43-161, 2007-53, 2008-100, 2011-25, 2012-53, 2013-36, 2014-77
NZ 62	Apr 1998	1998-255-355, 1999-90-284, 2001-204, 2002-104, 2003-175, 2004-29-53, 2007-178, 2011-246-252, 2014-60
NZ 63	Apr 1998	1998-255-355-402, 1999-90-200-284-302, 2000-275-296-403, 2002-104, 2010-158, 2011-246, 2012-204, 2013-193-262, 2014-60-101
NZ 64	Mar 2003	2006-34-53-145-229-240, 2010-158-196, 2012-204, 2013-193-262, 2014-101
NZ 66	Jan 2003	2006-34-53-114 -145
NZ 68	Aug 2009	2011-75-90, 2014-248
NZ 69	Aug 2009	2011-75-90, 2014-248
NZ 71	Mar 2002	2005-63-113, 2009-210, 2013-183
NZ 72	Mar 2002	2009-210, 2010-146, 2013-183
NZ 73	Mar 2002	2013-83, 2014-152
NZ 76	Aug 2009	2010-163
NZ 82 (T 82)	Oct 1993	1994-77-92-182-222-228-298-353, 1995-20-34-35-118-191-214-220-231-236, 1996-278, 1997-97, 1998-409, 1999-327-418, 2000-51, 2002-27, 2005-103, 2007-140, 2011-134, 2013-202
NZ 86	Jun 2010	2015-36
NZ 93	Oct 1997	2002-72-73
NZ 222	Jun 2008	2012-151
NZ 232	Jun 2006	2007-240, 2008-117, 2009-22, 2011-74, 2012-79, 2013-35
NZ 252	Oct 2006	
NZ 268	Oct 1995	1996-165-343, 1997-112-132-396, 1999-137-252, 2001-197, 2002-70, 2004-111, 2012-173, 2013-263, 2014-31
NZ 286	Apr 1992	1994-158-209-321, 2000-21
NZ 443	May 2010	2010-130-195, 2011-24, 2012-66
NZ 463	Mar 2015	
NZ 512	Aug 2013	2014-32-195
NZ 521	Oct 2010	2011-115-244, 2012-36-98-162, 2013-61, 2014-32
NZ 522	Apr 2011	2011-207, 2012-37-98, 2014-48-228

NZ 531	Apr 2011	2011-245, 2014-259
NZ 532	Jun 2012	2012-178-198, 2013-25-177, 2014-48-169
NZ 533	Dec 1999	2001-177, 2002-49-78-93, 2003-28, 2004-157, 2005-76-77-189, 2006-126-170-191, 2007-238, 2008-30-42-163-201, 2011-215-251, 2012-178-198, 2013-177
NZ 534	Dec 1999	1999-471, 2001-237, 2002-135, 2004-70, 2007-83, 2008-78-202, 2010-114, 2013-20, 2014-259
NZ 541	Jan 1998	1998-436, 2000-220-378, 2002-24-25, 2003-142, 2004-171-172, 2005-95, 2011-87-193, 2013-20, 2014-215
NZ 542	Apr 1997	1998-122-123-233, 1999-23, 2000-220-338-378, 2009-73-217, 2011-47-170-193, 2013-44, 2014-215
NZ 561	Oct 2006	2006-228, 2007-93-169, 2009-209, 2010-75, 2013-78, 2014-87-121
NZ 614	Apr 2009	2011-25-89-107-223, 2012-128, 2014-50-77
NZ 615	Mar 2011	2011-223-238, 2012-80-145-163, 2013-50-251-252, 2014-191, 2015-67
NZ 632	Jun 2000	2000-296-403, 2001-228, 2005-205-246, 2007-106, 2010-41, 2012-204, 2013-45-206, 2014-61, 2015-78
NZ 661	Jun 2000	2002-128, 2003-101, 2004-23, 2006-145, 2009-92, 2011-151
NZ 681	Aug 2009	2011-75-90-100, 2014-248
NZ 822 (T 822)	Apr 2011	2015-45
NZ 827 (T 827)	Oct 1998	1999-327, 2000-51, 2003-177, 2005-103, 2013-202
NZ 845	Apr 2009	2014-260
NZ 861	Jun 2010	
NZ 864	Jun 2010	
NZ 865	Jun 2010	2010-185
NZ 885	Apr 2009	2012-129
NZ 945	Oct 1995	2001-84, 2002-71
NZ 955	Oct 1993	1994-209, 1995-284, 1997-397, 2001-85, 2002-73
NZ 1414	Oct 1980	1983-165-174, 1990-87-192, 1991-23, 2001-242
NZ 2225	Jun 2008	
NZ 2325	Jun 2006	2006-144, 2007-70, 2013-35
NZ 2411	Jul 2000	2004-71, 2011-147
NZ 2683	Dec 2013	2014-135
NZ 2685	Dec 2013	2014-135
NZ 2687	Dec 2013	2014-135
NZ 2862	Apr 1992	1993-37, 1994-158-209
NZ 3111	Jun 2008	
NZ 4111	Jan 2003	
NZ 4212	Apr 2001	2001-226, 2006-216
NZ 4265	Jul 2008	2009-55, 2010-40
NZ 4314	May 2012	2012-127-141, 2013-26, 2014-34-183
NZ 4315	Aug 2011	2012-99, 2014-88-100
NZ 4421	Jul 2001	2003-143, 2010-157
NZ 4423	Jul 2001	
NZ 4424	Feb 2013	
NZ 4432	Jul 2008	2009-32-67, 2010-130-195
NZ 4541	Apr 1995	2001-110, 2003-114-149
NZ 4631	Jan 2000	2003-131-149
NZ 4632	Jul 2000	2003-131
NZ 4633	Dec 2014	
NZ 4634	Dec 2014	
NZ 5111	Apr 2001	2003-51, 2004-26-87, 2008-64, 2012-177, 2013-201
NZ 5113	Feb 2013	2014-203
NZ 5114	Apr 2001	2008-64-219, 2009-180, 2012-35, 2013-136, 2014-195
NZ 5121	Oct 1994	2013-43, 2013-136
NZ 5124	Jul 1994	1994-287-314, 1995-240-290-317, 1996-80-144-182-285-291-407, 1997-145-206-214, 1998-108-394, 2000-346-398, 2001-107-214, 2003-153, 2004-56-189, 2005-117-137-175, 2007-33-51, 2008-170, 2009-90, 2010-211, 2011-48, 2012-171, 2013-99, 2014-160-204
NZ 5125	Jul 1994	1995-30, 1996-80, 1997-20-206, 1998-296-403, 2000-346, 2001-214, 2005-117-118, 2006-66, 2007-45-51-229, 2008-80-170-229, 2009-146, 2011-48-144, 2012-171, 2013-228, 2014-160
NZ 5212	Sep 1999	2003-154, 2005-167

NZ 5214	Jun 2014	
NZ 5215	Jun 2014	2014-268
NZ 5216	Jun 2013	2014-32
NZ 5219	Sep 2013	2014-32
NZ 5221	Mar 2011	2011-116, 2013-24-100, 2014-228
NZ 5222	Mar 2011	2013-24-100, 2014-228
NZ 5223	Oct 2010	2011-37-145, 2013-100, 2014-228
NZ 5224	Oct 2010	2011-37
NZ 5227	Apr 2008	2009-121-191, 2011-207, 2013-34-164, 2014-48
NZ 5314	Nov 2012	2014-170
NZ 5315	Jun 2014	2014-259, 2015-44
NZ 5318	Sep 2001	2002-135, 2004-70, 2005-190, 2006-208, 2008-78-200, 2010-114-115-217, 2012-213, 2014-170-259
NZ 5321	Apr 2008	2008-155-179-193, 2009-191, 2010-67, 2011-59-214, 2013-25-164, 2014-161-169-242, 2015-26
NZ 5322	Jun 2012	2012-197, 2014-76-161-231, 2015-77
NZ 5323	Jun 2012	2012-197, 2014-76-231
NZ 5324	Jun 2012	2013-146-177, 2014-161-169, 2015-26
NZ 5325	Jan 2008	2008-127-164, 2009-192, 2011-23-60-214, 2012-140, 2013-146
NZ 5327	Mar 2005	2005-77, 2006-126, 2007-82-238, 2008-41-42, 2011- 251, 2012-178, 2013-177
NZ 5328	Mar 2005	2006-126, 2007-82-231-238, 2008-41-42
NZ 5411	Jul 2004	2005-78-95, 2007-239, 2009-42-66, 2010-62, 2011-87, 2013-20-165
NZ 5412	Oct 2004	2005-78-95, 2007-239, 2008-58, 2009-42-66, 2012-90, 2013-112-153
NZ 5413	Jan 1998	1998-362, 2000-220-425, 2002-24-25, 2003-142-185, 2004-171-172, 2005-95, 2011-87-193, 2013-20, 2014-215
NZ 5423	Jul 2001	2009-217
NZ 5551	Apr 1997	
NZ 5571	Jun 2008	2010-81, 2012-126
NZ 5612	Apr 2011	2012-42, 2013-78, 2014-33-87-121-182-221
NZ 6142	Jun 2008	2010-140-154-218, 2012-30-47-115
NZ 6144	Apr 2009	2009-228, 2011-107-108, 2013-241, 2014-49-184
NZ 6151	Sept 2011	2012-80
NZ 6152	Apr 1998	1998-303-334, 1999-120-185-276-452, 2001-62-76, 2002-62, 2004-49-53-173, 2005-146, 2011-89-223
NZ 6153	Mar 2011	2011-238, 2012-145-163, 2013-50-252, 2014-190-191
NZ 6154	Mar 2011	2012-145, 2013-50, 2014-65-191
NZ 6212	May 1999	1999-293, 2000-356, 2002-104, 2003-57, 2004-53-60, 2009-176-186, 2013-215, 2014-60
NZ 6321	Jun 2000	2000-379-403, 2001-154-228, 2002-55-63, 2004-81-174, 2005-178, 2006-33, 2012-54-204, 2013-45-262, 2015-78
NZ 6324	Apr 2009	2012-48, 2013-206
NZ 6422	Apr 2009	2011-109
NZ 6433	Apr 2003	
NZ 6612	Jul 2004	2005-102-157, 2008-135, 2009-153, 2011-132-151, 2013-178, 2014-109
NZ 6821	Aug 2009	2010-175, 2012-91, 2014-51
NZ 6825	Mar 2011	2011-133
NZ 6912	Jul 2001	2003-91, 2004 -82
NZ 7132	Mar 2005	2013-183
NZ 7142	Oct 1994	1997-263, 2009-111-210, 2010-155, 2013-184, 2014-67
NZ 7621	Aug 2009	2011- 253
NZ 7622	Aug 2009	2013-83
NZ 7623	Apr 1999	2005-64, 2006-54
NZ 7624	Aug 2009	2011-38
NZ 7625	Aug 2009	2011-38-146
NZ 7653	Aug 2009	2011-152
NZ 7654	Mar 2002	2002-108, 2005-90, 2006-54-89, 2013-125, 2014-66
NZ 7655	Aug 2009	
NZ 7656	Aug 2009	2011-152
NZ 8215 (T 8215)	Jan 1996	2012-31
NZ 8225 (T 8225)	May 2010	

NZ 8235 (T 8235)	Oct 1993	2004-31, 2010-109
NZ 8238 (T 8238)	Apr 2005	
NZ 8247 (T 8247)	Oct 1993	1994-182-266, 1998 -180-378, 2005-97-129
NZ 8248 (T 8248)	Oct 1993	1994-182-266, 1995-262, 1998-180-378, 2005-97-129
NZ 8259 (T 8259)	Jul 1993	
NZ 8266 (T 8266)	Jul 1993	1993-304, 1994-87-106-346, 1995-181,1997-298, 1998-409
NZ 8275 (T 8275)	Apr 2010	2013-101-202
NZ 8277 (T 8277)	Apr 2010	2013-101-202
NZ 8645	Jun 2010	
NZ 8655	Jul 2007	2007-232, 2010-185
NZ 8685	Oct 1993	1995-203-224, 1996-30-280, 1997-154-169, 1998-32, 2004-166, 2009-76, 2015-36
NZ 9558	Oct 1992	1994-209, 1995-126-269-357, 2002-72-95, 2003-160, 2007-191, 2013-137-185, 2014-78
NZ 14051 (INT 51)	Jan 1997	1997-370, 2000-43-44 -92-357-426, 2001-124, 2004-94-135, 2005-140-158-183, 2006-137-151, 2007-171-210
NZ 14052 (INT 52)	Apr 1997	1997 -264-340-377, 1998-134-181-220, 1999-80-219, 2000 -74-102-163-178-244-276-277-357-410-427, 2001-51-57, 2002-58-59-96, 2004-73-93, 2005-28-80-81-158-182-199-201-214-215-251-252, 2006-35-55-60-98-99-116-164-165-166-174-181-221, 2007-36
NZ 14060 (INT 60)	Oct 2008	2009-56, 2012-151
NZ 14061 (INT 61)	Oct 2008	2009-56-161, 2012-151
NZ 14065 (INT 65)	Jan 1997	1997-162-178, 1998 -152-195-392, 1999-137-320-338, 2002-74, 2004-103, 2005-235, 2012-189
NZ 14600 (INT 600)	Jul 2007	2008-52-134-249, 2012-157-214
NZ 14601 (INT 601)	Jul 2007	2007-209, 2008-52-101-134-249, 2012-214
NZ 14602 (INT 602)	Jul 2007	2013-207
NZ 14604 (INT 604)	Oct 1996	1997-21-144-163-277, 1998-125-220, 1999-81, 2000-94-95-129-190-300-302, 2001-86-168-2002-34-42-56-57-58, 2003-133-150, 2004-40-50-63-67-91-92, 2005-27-37-81-179-180-198-214-223-250, 2006-100-150-164, 2007-36-201, 2013-207
NZ 14605 (INT 605)	Jul 2007	2008-143, 2009-218, 2012-151, 2013-37-207
NZ 14606 (INT 606)	Jul 2007	2007-233, 2008-88-143, 2009-161, 2013-207
NZ 14607 (INT 607)	Apr 1997	1997-278, 1999-201-213, 2000-65-311-374-380-391, 2001-124-135-169, 2002-113, 2003-128, 2004-64-127-135-142-167-178-179, 2005-148, 2006-131-181, 2009-161
NZ 14612	Apr 1999	
NZ 14613	Apr 1999	2000-154, 2001-135, 2004-74
NZ 14629 (INT 629)	Apr 1997	1998-212, 2000-161, 2001-51, 2002-120, 2005-28
NZ 14630 (INT 630)	Apr 1997	1997-283, 2000-169, 2001-51, 2002-72-73-120, 2014-260
NZ 14631 (INT 631)	Apr 1997	1997-283, 1998-132-234, 1999-327, 2000-74-175, 2001-51, 2002-27-120, 2004-41, 2005-28, 2007-140, 2008-143, 2009-218, 2013-37, 2014-260
NZ 14638 (INT 638)	Oct 1996	1997-196,1998 -132-234-290-316-317, 1999-81-327-367, 2000-22-23-129-320,2002-34, 2003-127-156, 2004-41, 2005-223,2007-47, 2008-143, 2009-218, 2010-27-213, 2012-38, 2013-207, 2015-54
NZ 14900 (INT 900)	Apr 1998	2002-74, 2003-126, 2012-92-189
NZ 14901 (INT 9001)	Jul 2007	
NZ 14902 (INT 9002)	Jul 2007	
NZ 14903 (INT 9003)	Aug 2008	
NZ 14906 (INT 9006)	Aug 2006	
NZ 14907 (INT 9007)	Aug 2006	
NZ 14908 (INT 9008)	Aug 2006	2013-113
NZ 14909 (INT 909)	Jun 2004	2011-233, 2013-113
NZ 14912 (INT 9012)	Aug 2006	