

# NEW ZEALAND NOTICES TO MARINERS

*Notices*

**NZ 92 – 107**

© Crown Copyright 2015. All rights Reserved. Permission is not required to make analogue copies of these Notices but such copies are not to be sold.

---

## CONTENTS

- I [Explanatory Notes.](#)
  - II [New Zealand Notices to Mariners.](#)
  - III [Corrections to New Zealand Light List.](#)
  - IV [Corrections to Sailing Directions and New Zealand Publications.](#)
  - V [Navigational Warnings.](#)
  - VI [Corrections to Admiralty List of Radio Signals.](#)
- 

New Zealand Notices to Mariners are the authority for correcting New Zealand charts within the New Zealand area of charting responsibility as shown in [Annual Notice No. 1](#).

Mariners are requested to immediately inform New Zealand Hydrographic Authority, Land Information New Zealand, 155 The Terrace, PO Box 5501, Wellington 6145, New Zealand, Phone: 0800 665 463 or +64 (0)4 460 0110, Fax: +64 (0)4 460 0161, email: [ntm@linz.govt.nz](mailto:ntm@linz.govt.nz), of the discovery of new or suspected dangers to navigation, or shortcomings in charts and publications. A copy of a Hydrographic Note, a convenient form on which to send such information, is included at the end of Section VI of the Fortnightly Notices to Mariners.

Changes or defects in aids to navigation should be reported to the Rescue Coordination Centre New Zealand (RCCNZ) via the nearest New Zealand Coastal Maritime Radio Station Phone: +64 (0)4 577 8030, Fax: +64 (0)4 577 8038 or +64 (0)4 577 8041, email: [rccnz@maritimenz.govt.nz](mailto:rccnz@maritimenz.govt.nz).

Copies of these Notices can be obtained from Land Information New Zealand, Maritime New Zealand, Principal Chart Agents at the major ports of New Zealand and the Internet: [www.linz.govt.nz](http://www.linz.govt.nz).

## EXPLANATORY NOTES

**Charts.** The notices in Section II give instructions for the correction of charts. Geographical positions refer to the largest scale chart unless otherwise stated. They are normally given in degrees, minutes and decimals of a minute, but may occasionally quote seconds for convenience when plotting from the graduation of some older-style charts. Bearings are true reckoned clockwise from 000° to 359°; those relating to lights are given as seen by an observer from seaward. Symbols referred to are those shown in publication Chart 5011 (*INT 1*) Symbols and Abbreviations used on Admiralty Paper Charts, published by the United Kingdom Hydrographic Office.

Alterations to depth contours, deletion of depths to make way for new detail, etc. are not mentioned unless they have some navigational significance.

Block corrections or notes accompanying notices in Section II are placed after Section VI.

**Temporary and Preliminary Notices.** These are indicated by (T) or (P) after the notice number. A list of [\(T\) and \(P\) Notices in force](#) is published on the LINZ website and in the fortnightly Editions of Notices to Mariners. Charts are not corrected for them before issue; they should be corrected in pencil on receipt.

**Light Lists.** The detailed correction to the Light List is given in Section III and may not be published in the same edition as the chart correcting notice. The entire entry for each light is printed, and an asterisk (\*) is shown under the column which contains an amendment. In the case of a new light, an asterisk (\*) appears under all the columns. New and extensively altered entries are intended to be pasted in. It is recommended that a manuscript entry be made for all shorter corrections.

It is emphasized that the [List of Lights](#) is the authority for lights and that many alterations, especially those of a temporary but operational nature, may only be promulgated as corrections to the List of Lights.

**Sailing Directions.** Corrections to Sailing Directions are given in Section IV. It is recommended that such corrections be kept together in a file with the latest list of those in force on top. The file can then be consulted when using the Current Edition of the book to see if any notices affecting the area under consideration are extant. Corrections should not be pasted into the Current Edition of the book or Supplement.

**New Zealand Publications.** Corrections to New Zealand Publications are given in Section IV.

**Navigational Warnings.** NAVAREA XIV and NZ Coastal Navigational Warnings that are in force at the time of publication are given in Section V.

**Radio Signals.** When radio signals are affected by a notice the Admiralty List of Radio Signals reference number is quoted. The detailed correction to the List of Radio Signals is given in Section VI and may be published in a later edition than the chart correcting notice. It is recommended that such corrections be kept together in a file with the latest list of those in force on top. Corrections should not be pasted into the Current Edition of the book.

**Correction of Charts and Publications by the User.** New Zealand Notices to Mariners contain important information and should be used to keep the specified charts and books up to date.

## THE USE OF CHARTS AND ASSOCIATED PUBLICATIONS

**Reliance on Charts and Associated Publications.** While every effort is made to ensure the accuracy of the information on New Zealand charts and other publications, it should be appreciated that it may not always be complete and up to date. The mariner must be the final judge of the reliance to be placed on the information given, bearing in mind their particular circumstances, local pilotage guidance and the judicious use of available navigational aids.

**Charts.** Charts should be used with prudence: there are areas where the source data are old, incomplete or of poor quality. The mariner should use the largest scale appropriate for his particular purpose; apart from being the most detailed, the larger scales are usually corrected first. When extensive new information (such as a new hydrographic survey) is received, some months may elapse before it can be fully incorporated in published charts. On small scale charts of ocean areas where hydrographic information is, in many cases, still sparse, charted shoals may be in error as regards position, least depth and extent. Undiscovered dangers may exist, particularly away from well-established routes.

**Further guidance.** The Mariner's Handbook (NP 100) gives a fuller explanation of the limitations of charts. All users should study it in their own interest.

**ENC/ECDIS Data Presentation and Performance Check in Ships.** The International Maritime Organization (IMO) has recently indicated its concerns about operating anomalies identified in some ECDIS that fail to display important new chart features.

The International Hydrographic Organization (IHO) has produced an ENC Data Presentation and Performance Check dataset that allows mariners to check their ECDIS. The check dataset is available through ENC service providers and from the IHO website ([www.iho.int](http://www.iho.int)) which includes instructions.

Mariners are strongly recommended to use the dataset and report the results of their checks to help the IHO identify how the different brands of ECDIS display and handle chart information. Mariners are asked to also inform the IMO, national Hydrographic Offices, ECDIS manufacturers and others, so that they can take any corrective action that may be necessary.

In order to present the most comprehensive report possible to the IMO and to further assist in resolving the issues so far identified, the IHO is keen that as many ships as possible forward their results. Reports on the results can be sent via a form provided with the data or the results can be submitted on-line through a web-form.

All relevant documentation can be downloaded free from the IHO website at: [www.iho.int](http://www.iho.int).

II

**NUMERICAL INDEX OF CHARTS AFFECTED**  
*(NZ NTM Edition No. 9 dated 1 May 2015)*

NZ Chart No.	INT Chart No.	ENC No.	Notice to Mariners
NZ 21	INT 641		105(T)
NZ 23	INT 640	NZ200023	98(T), 99(T), 105(T)
NZ 24			104(T)
NZ 25	INT 648		105(T)
NZ 25	INT 648	NZ200025	104(T), 106(T)
NZ 26			98(T), 99(T)
NZ 29			104(T)
NZ 43			105(T)
NZ 45		NZ300045	105(T)
NZ 48			105(T)
NZ 55		NZ300055	98(T)
NZ 56		NZ300056	98(T)
NZ 58		NZ300058	99(T)
NZ 61			101(T)
NZ 64		NZ300064	106(T)
NZ 68		NZ300068	104(T)
NZ 443		NZ300443	105(T)
NZ 521		NZ300521	103(T)
NZ 614		NZ300614	101(T)
NZ 4315		NZ504315	100(T)
NZ 5215		NZ505215	103(T)
NZ 5113			97(P)
NZ 5314			92
NZ 5323			95
NZ 5612		NZ505612	107(T)
NZ 6144		NZ406144	101(T)
NZ 6422		NZ406422	102(T)
NZ 14060	INT 60		104(T), 105(T)
NZ 14061	INT 61		104(T), 105(T)
NZ 14065	INT 65		104(T)
NZ 14600	INT 600	NZ14600E	98(T), 99(T), 104(T), 105(T), 106(T)
NZ 14601	INT 601		104(T), 105(T), 106(T)
		NZ604315	100(T)
		NZ605612	107(T)

## NEW ZEALAND TEMPORARY AND PRELIMINARY NOTICES IN FORCE

(NZ NTM Edition No. 9 dated 1 May 2015)

NZ Notice	T/P	Charts Affected	Locality and Subject
		NZ Chart, ENC Cell	
242/09	P	<b>NZ 42, NZ 4265</b>	Kaipara Hr. Entrance: Depths
222/10	P	<b>NZ 542</b>	Whakatane: Depths
20/11	P	<b>NZ 5411, NZ5412, NZ405411, NZ505412</b>	Tauranga Hr.: Lights
202/11	P	<b>NZ 6142, NZ606142</b>	Port Nelson: Light, Beacon, Works in Progress
211/12	P	<b>NZ 61, NZ 614, NZ300061, NZ300614, NZ506141</b>	North Coast, Golden Bay & Tasman Bay: Lights
85/13	P	<b>NZ 541, NZ 5411, NZ 5412, NZ 5413, NZ300541, NZ405411, NZ505412</b>	East Coast, Tauranga, Port of Tauranga: Works
147/13	P	<b>NZ 521, NZ300521</b>	East Coast, Poor Knights Islands: Depths
156/13	P	<b>NZ 541, NZ 5413, NZ300541, NZ405413</b>	East Coast, Tauranga, Motiti Island: Depths
169/13	P	<b>NZ 5411, NZ405411</b>	East Coast, Tauranga Harbour, Katikati Entrance: Buoy
172/13	P	<b>NZ 6152</b>	North Coast, Havelock: Lights, Beacons
194/13	P	<b>NZ 5124</b>	East Coast, Bay of Islands, Kerikeri Inlet: Light Beacons
221/13	P	<b>NZ 4265</b>	West Coast, Kaipara Harbour: Lights, Beacons, Buoys
41/14	P	<b>NZ 268</b>	Chatham Islands: Depths and Rocks
42/14	P	<b>NZ 26, NZ 27, NZ 268</b>	Chatham Islands: Areas to be avoided
45/14	P	<b>NZ 632, NZ 6324, NZ406324</b>	East Coast, Akaroa Harbour: Area of Restricted Access
132/14	T	<b>NZ 6321, NZ506321, NZ606321</b>	East Coast, Lyttelton Harbour: Light, Beacon
139/14	P	<b>NZ 5612</b>	East Coast, Approaches to Napier: Light Sectors
141/14	T	<b>NZ 23 (INT 640), NZ 25 (INT 648), NZ 45, NZ 48, NZ200023, NZ300045</b>	West Coast, South Taranaki Bight: Seabed Obstructions
156/14	P	<b>NZ 82 (T 82), NZ 8238 (T 8238), NZ 8247 (T 8247), NZ 8248 (T 8248), NZ8259 (T 8259), NZ300082, NZ508238, NZ608238</b>	Kingdom of Tonga, Ha'apai Group: Navigation Aids
171/14	P	<b>NZ 521, NZ300521</b>	East Coast, Whangarei Harbour: Directional light
210/14	P	<b>NZ 8215, NZ508215</b>	Kingdom of Tonga, Niuaotupapu: Navigation Aids
211/14	P	<b>NZ 82 (T 82), NZ 827 (T 827), NZ 8275 (T 8275), NZ 8277 (T 8277), NZ300827, NZ408275, NZ508277</b>	Kingdom of Tonga, Tongatapu: Navigation Aids
213/14	T	<b>NZ 8655, NZ508655</b>	Samoa, Approaches to Apia Harbour: Buoys
224/14	P	<b>NZ 6422, NZ406422, NZ506422</b>	East Coast, Timaru Harbour: Works, Exclusion Zone and Buoy
238/14	P	<b>NZ 822 (T 822), NZ 8225 (T 8225), NZ400822, NZ508225</b>	Kingdom of Tonga, Vava'u Group, Neiafu Harbour: Prohibited Area
245/14	P	<b>NZ 531, NZ 534, NZ 5318, NZ300531</b>	East Coast, Mercury Islands, Mercury Bay: Depths, Rocks
249/14	T	<b>NZ 5321, NZ 5322, NZ405321, NZ505322</b>	East Coast, Auckland Harbour, Takapuna Beach: Research Buoy
251/14	T	<b>NZ 54, NZ 541, NZ 542, NZ 5413, NZ300541, NZ405413</b>	East Coast, Tauranga, Astrolabe Reef: Exclusion Zone and Waverider Buoy
261/14	T	<b>NZ 522, NZ 532, NZ 5227, NZ305322</b>	East Coast, Kawau Bay, Matakana River: Works in Progress
263/14	P	<b>NZ 62, NZ 63, NZ 6212, NZ300062, NZ462122</b>	East Coast, Kaikoura: Marine Reserve
264/14	P	<b>NZ 63, NZ 64, NZ 632, NZ 6324, NZ300063, NZ406324</b>	East Coast, Banks Peninsula, Akaroa Harbour: Marine Reserve
275/14	P	<b>NZ 8655, NZ508655</b>	Samoa, Apia Harbour: Buoys and Breakwater
22/15	P	<b>NZ 45, NZ 48, NZ300045</b>	West Coast, Cape Egmont Westwards: Protected Area
24/15	P	<b>NZ 82 (T 82), NZ 822 (T 822), NZ 8225 (T 8225), NZ300082, NZ400822, NZ508225</b>	Kingdom of Tonga, Vava'u Group: Navigation Aids
29/15	T	<b>NZ 632, NZ 6321, NZ400632, NZ506321, NZ606321</b>	East Coast, Lyttelton Harbour, Sticking Point Eastwards: Exclusion Zone
51/15	T	<b>NZ 14638 (INT 638)</b>	Fiji, Viti Levu, Vanua Levu & Southern Lau Group: Lights
56/15	T	<b>NZ 23 (INT 640), NZ 25 (INT 648), NZ 45, NZ 48, NZ200023, NZ300045</b>	West Coast, South Taranaki Bight: Drilling Operations
59/15	T	<b>NZ 14065 (INT 65), NZ 14900 (INT 900), NZ14065E, NZ21490E</b>	Ross Sea, Terra Nova Bay, Gerlache Inlet: Scientific Instrument
68/15	T	<b>NZ 45, NZ 48, NZ 4541, NZ300045</b>	West Coast, Wanganui, South Mole Head: Light Unlit
71/15	T	<b>NZ 4314, NZ404314</b>	West Coast, Manukau Harbour Entrance: Depths
73/15	P	<b>NZ 614, NZ 615, NZ 6151, NZ 6152, NZ 6153, NZ 6154, NZ300614, NZ300615, NZ461531, NZ461532, NZ561541, NZ561542, NZ661542</b>	Marlborough Sounds: Use of Automated Navigation Systems
74/15	T	<b>NZ 52, NZ 53, NZ 522, NZ 532, NZ 5227, NZ305322</b>	East Coast, Kawau Bay: Scientific Instruments
75/15	T	<b>NZ 632, NZ 6321, NZ400632, NZ506321</b>	East Coast, Lyttelton Harbour: Unlit Buoy

II

NZ Notice	T/P	Charts Affected	Locality and Subject
		NZ Chart, ENC Cell	
80/15	T	<b>NZ 53, NZ 531, NZ 5315, NZ 5318, NZ300531, NZ505315</b>	East Coast, Mercury Bay: Scientific Instruments
85/15	T	<b>NZ 66, NZ 661, NZ 6612, NZ300661, NZ506612</b>	East Coast, Approaches to Otago Harbour: Scientific Instruments
90/15	T	<b>NZ 7142, NZ407142, NZ507142</b>	West Coast, Greymouth Harbour: Depths
96/15	T		Maritime Safety Broadcasts
97/15	P	<b>NZ 5113</b>	East Coast, Houhora & Rangaunu Harbour: Aids to Navigation
98/15	T	<b>NZ 23 (INT 640), NZ 26, NZ 55, NZ 56, NZ 14600 (INT 600), NZ200023, NZ300055, NZ300056, NZ14600E</b>	East Coast, Poverty Bay, Eastwards: Scientific Instruments
99/15	T	<b>NZ 23 (INT 640), NZ 26, NZ 58, NZ 14600 (INT 600), NZ200023, NZ300058, NZ14600E</b>	East Coast, Honeycomb Southeastwards: Scientific Instruments
101/15	T	<b>NZ 61, NZ 614, NZ 6144, NZ300614, NZ406144</b>	North Coast, Tasman Bay and Golden Bay: Spat Catching Areas
107/15	T	<b>NZ 5612, NZ505612, NZ605612</b>	East Coast, Napier: Dredging

**NZ 92/15 NEW ZEALAND PUBLICATIONS – Paper Chart.**

*Former notice – NZ 140(P)/13 is cancelled.*

**(1) Limited New Edition.**

<i>Chart</i>	<i>Published</i>	<i>Title and other remarks</i>	<i>Scale 1:</i>	<i>Page of 15<sup>th</sup>. Edition NZ 202</i>
<b>NZ 5314</b>	May 15	<b>Mercury Islands</b>	25 000	21
		<i>Limited new edition incorporating updates from new survey data in small areas.</i>		
		36° 33'.90S. – 36° 42'.65S. 175° 42'.75E. – 175° 59'.20E.		

**(2) Chart Permanently Withdrawn.**

<i>Chart</i>	<i>On Publication of Limited New Edition</i>	<i>Date</i>
<b>NZ 5314</b>	<b>NZ 5314</b>	May 15

New Zealand Hydrographic Authority  
NI 64/2015

**NZ 93/15 NEW ZEALAND PUBLICATIONS – Electronic Navigational Charts.**

**New ENC to be Published Shortly.**

*ENC Cell Title*

**NZ505314** NZ505314 - NZ5314 - North Island – East Coast – Mercury Islands.

New Zealand Hydrographic Authority  
NI 95/2015



**NZ 94/15 NEW ZEALAND PUBLICATIONS – Raster Navigational Charts (RNCs).**

From 1 May 2015, the NZMariner BSB cumulative update file for April 2015 will be available from the LINZ website <http://www.linz.govt.nz/sea/charts/nzmariner-official-raster-navigational-charts-rncs>.

NZMariner Raster Navigational Charts (RNCs) can be used only in conjunction with compatible viewing software called Electronic Charting Systems (ECS).


For compliance with New Zealand legal requirements for nautical charts and publications please refer to Maritime Rules Part 25, as supported by Maritime New Zealand Marine Guidance Notice 8 'Use of Electronic Charts, ECDIS and ENC's in New Zealand' available from the Maritime New Zealand website [www.maritimenz.govt.nz/Commercial/Shipping-safety/Safety-updates/Guidance-notices.asp](http://www.maritimenz.govt.nz/Commercial/Shipping-safety/Safety-updates/Guidance-notices.asp).

Further details are included in the Annual New Zealand Notices to Mariners, No.1 which can be found in the New Zealand Nautical Almanac (NZ 204) and on the LINZ website [www.linz.govt.nz](http://www.linz.govt.nz).

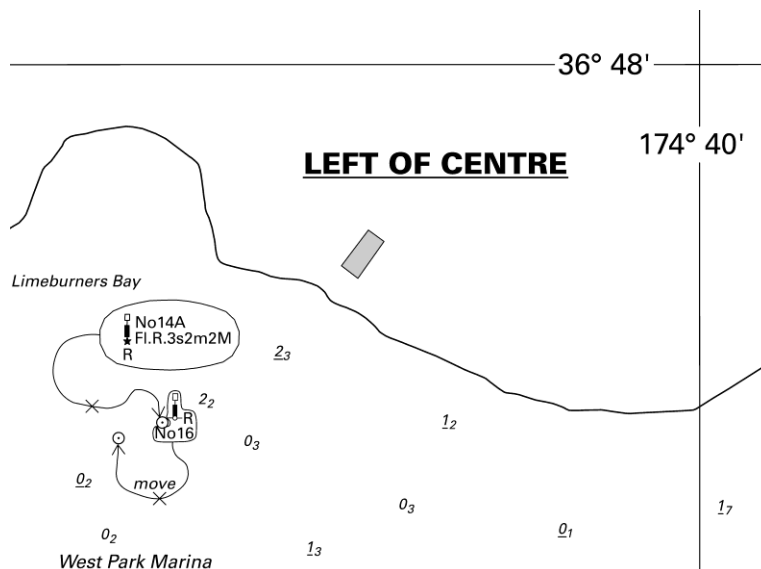
New Zealand Hydrographic Authority  
NI 87/2015

NZ 95/15      **NEW ZEALAND – North Island – East Coast – Auckland – Waitemata Harbour – Henderson Creek – Beacons, Light.**

Chart NZ 5323 [231/14]

Insert	  	No14A Fl.R.3s2m2M R	36° 48'.46S., 174° 39'.14E.
Move	  to:	No16 from: R	36° 48'.45S., 174° 39'.16E.  36° 48'.48S., 174° 39'.07E.

Hobsonville Marina  
NZ Light List: 3838.35  
NI 78/2015



<i>Issued as a guide to chart correction.</i>		<i>Use in conjunction with the appropriate NZ Notice to Mariners.</i>	
<b>LAST CORRECTION</b>	<b>NZ NTM No.</b>	<b>CHART No.</b>	
<b>NZ 231/14</b>	<b>NZ 95/15</b>	<b>NZ 5323</b>	

**NZ 96(T)/15 SOUTH PACIFIC OCEAN – Maritime Safety Broadcasts.**

*Former notice* – NZ 27(T)/15 is cancelled.

Optimum R/T frequencies within NAVAREA XIV

The accompanying diagrams show the optimum R/T calling and working frequency bands and times for navigational warnings broadcast within 1000 nautical miles of Taupo Maritime Radio (ZLM) (38° 50'S., 176° 00'E. approx.) for the period May to July 2015.

Australian Government IPS Radio and Space Services  
NI 88/2015

**NZ 97(P)/15 NEW ZEALAND – North Island – East Coast – Houhora Harbour and Rangaunu Harbour – Aids to Navigation.**

Former notice – NZ 243(P)/14 is cancelled.

1. The following aids to navigation have been established in Houhora Harbour:

Name	Position	Characteristic	Type
HH5	34° 48'.95S., 173° 07'.28E.	Q.G.3m2M	Starboard lateral mark, green cone topmark
Ripiri	34° 49'.26S., 173° 08'.75E.	Q.R.1m2M	Port lateral buoy

2. The following aids to navigation have been removed from Houhora Harbour:

Name	Position	Characteristic	Type
Ripiripi, P2-	34° 49'.26S., 173° 08'.75E.	Q.R.3m1M	Port lateral mark, red can topmark
S1	34° 49'.27S., 173° 08'.60E.	Q.G.3m1M	Starboard lateral mark, green cone topmark
S4	34° 49'.41S., 173° 08'.26E.	Q.G.3m1M	Starboard lateral mark, green cone topmark
-	34° 49'.23S., 173° 07'.74E.	unlit	Starboard lateral mark, green cone topmark

3. The following lit beacons have been established in Rangaunu Harbour:

Name	Position	Characteristic	Type
AC2	34° 56'.26S., 173° 16'.98E.	Fl.R.3s3m2M	Port lateral mark, red can topmark
AC4	34° 57'.42S., 173° 15'.64E.	Fl.R.3s3m2M	Port lateral mark, red can topmark
Home Creek	34° 57'.90S., 173° 15'.23E.	Fl.G.2.5s3m2M	Starboard lateral mark, green cone topmark
J6	34° 59'.35S., 173° 14'.96E.	Q.R.3m2M	Port lateral mark, red can topmark
* Prices	34° 59'.33S., 173° 15'.29E.	Q.G.3m2M	Starboard lateral mark, green cone topmark

4. The following aids to navigation have been removed from Rangaunu Harbour:

Name	Position	Characteristic	Type
-	34° 54'.37S., 173° 18'.37E.	unlit	Port lateral mark, red can topmark
A2	34° 56'.25S., 173° 16'.99E.	Fl.R.3s2M	Port lateral buoy
A4	34° 57'.42S., 173° 15'.64E.	Fl.R.3s2M	Port lateral buoy
Home Creek	34° 57'.89S., 173° 15'.26E.	Fl.G.2.5s2M	Starboard lateral buoy
Junction	34° 59'.35S., 173° 14'.95E.	Q.R.2M	Port lateral buoy
* Prices	34° 59'.33S., 173° 15'.29E.	Q.G.2M	Starboard lateral buoy

5. Charting action will take place in due course.

\* Indicates new entry

**Chart affected: NZ 5113**

Northland Regional Council

NZ Light List: 3690.89, 3691.45, 3691.52, 3691.55, 3691.595, 3690.72, 3690.74, 3690.78, 3691.598

NI 84/2015

**NZ 98(T)/15 NEW ZEALAND – North Island – East Coast – Poverty Bay, Eastwards – Scientific Instruments.**

*Former notice* – NZ 138(T)/14 is cancelled.

\* 1. Scientific ocean bottom instruments have been deployed in the following positions until July 2015:

- a) 39° 08'.00S., 178° 18'.79E.
- b) 39° 04'.29S., 178° 31'.29E.
- c) 38° 56'.87S., 178° 34'.33E.
- d) 38° 59'.67S., 178° 19'.55E.
- e) 38° 46'.62S., 178° 35'.01E.
- f) 38° 46'.57S., 178° 34'.97E.
- g) 38° 43'.78S., 178° 37'.13E.
- h) 38° 41'.64S., 178° 39'.08E.
- i) 38° 41'.68S., 178° 39'.04E.
- j) 38° 48'.30S., 178° 16'.97E.
- k) 38° 52'.00S., 178° 12'.42E.
- l) 38° 50'.51S., 178° 40'.27E.
- m) 38° 50'.85S., 178° 52'.52E.
- n) 38° 54'.47S., 178° 58'.96E.
- o) 38° 53'.60S., 178° 45'.31E.
- p) 38° 53'.54S., 178° 45'.39E.
- q) 38° 56'.11S., 178° 10'.22E.
- r) 38° 40'.92S., 178° 22'.60E.
- s) 38° 34'.53S., 178° 25'.08E.
- t) 38° 44'.77S., 178° 40'.83E.
- u) 38° 44'.76S., 178° 40'.73E.
- v) 38° 41'.33S., 178° 49'.20E.
- w) 38° 43'.26S., 178° 53'.59E.
- x) 39° 07'.50S., 178° 58'.51E.
- y) 38° 50'.59S., 178° 27'.57E.
- z) 38° 58'.67S., 178° 47'.75E.
- aa) 38° 35'.52S., 178° 49'.12E.
- bb) 39° 07'.16S., 178° 41'.90E.
- cc) 38° 42'.69S., 178° 34'.09E.
- dd) 38° 37'.26S., 179° 02'.76E.
- ee) 38° 45'.39S., 178° 59'.84E.
- ff) 38° 47'.53S., 179° 08'.84E.
- gg) 39° 07'.21S., 178° 58'.89E.
- hh) 38° 42'.81S., 178° 34'.12E.

2. Mariners engaged in seabed trawling activities are requested to remain 2.5NM clear at all times.

\* *Indicates revised entry*

**Charts temporarily affected: NZ 23 (INT 640), NZ 26, NZ 55, NZ 56, NZ 14600 (INT 600), NZ200023, NZ300055, NZ300056, NZ14600E**

GNS Science  
NI 93/2015

**NZ 99(T)/15 NEW ZEALAND – North Island – East Coast – Honeycomb Southeastwards – Scientific Instruments.**

*Former notice* – NZ 140(T)/14 is cancelled.

\* 1. Scientific ocean bottom instruments have been deployed in the following positions until September 2015:

- a) 41° 38'.29S., 176° 05'.03'E.
- b) 41° 46'.88S., 176° 17'.30'E.

2. Mariners engaged in seabed trawling activities are requested to remain 2.5NM clear at all times.

\* *Indicates revised entry*

**Charts temporarily affected: NZ 23 (INT 640), NZ 26, NZ 58, NZ 14600 (INT 600), NZ200023, NZ300058, NZ14600E**

GNS Science  
NI 94/2015

**NZ 100(T)/15 NEW ZEALAND – North Island – West Coast – Manukau Harbour – Onehunga Wharf –  
Onehunga Cement Berth – Dredged Depths Restored.**

*Former notice – NZ 218(T)/14 is cancelled.*

Cancel this notice on receipt.

**Charts formerly affected: NZ 4315, NZ504315, NZ604315**

Ports of Auckland  
NI 91/2015

**NZ 101(T)/15 NEW ZEALAND – South Island – North Coast – Tasman Bay and Golden Bay – Spat  
Catching Areas.**

*Former notice – NZ 246(T)/14 is cancelled.*

- \* 1. Seasonal spat catching areas have been established in Tasman Bay and Golden Bay until June 2015. The perimeter corners are identified by cardinal marks at the following positions:

Tasman Bay	41° 03'.32S., 173° 07'.21E. 41° 04'.55S., 173° 08'.24E. 41° 05'.60S., 173° 05'.91E. 41° 04'.38S., 173° 04'.89E.
Golden Bay	40° 45'.11S., 172° 50'.88E. 40° 46'.03S., 172° 52'.88E. 40° 47'.61S., 172° 51'.33E. 40° 46'.66S., 172° 49'.33E.

2. Mariners are requested to exercise caution when navigating in the area.

- \* *Indicates revised entry*

**Charts temporarily affected: NZ 61, NZ 614, NZ 6144, NZ300614, NZ406144**

Tasman Bay Ring Road Spat Catching Ltd & Golden Bay Ring Road Spat Catching Ltd  
NI 92/2015



**NZ 102(T)/15 NEW ZEALAND – South Island – East Coast – Timaru – Seabed Obstruction Removed.**

*Former notice – NZ 58(T)/15 is cancelled.*

Cancel this notice on receipt.

**Charts formerly affected: NZ 6422, NZ406422**

Primeport Timaru Ltd.  
NI 89/2015

**NZ 103(T)/15 NEW ZEALAND – North Island – East Coast – Whangarei Harbour – Portland Reach –  
Works Complete.**

*Former notice – NZ 239(T)/14 is cancelled.*

Cancel this notice on receipt.

**Charts formerly affected: NZ 521, NZ 5215, NZ300521, NZ505215**

Northland Regional Council  
NI 96/2015

**NZ 104(T)/15 NEW ZEALAND – South Island – Nugget Point Southward – Seismic Survey Complete.**

*Former notice – NZ 48(T)/15 is cancelled.*

Cancel this notice on receipt.

**Charts formerly affected: NZ 24, NZ 25 (INT 648), NZ 29, NZ 68, NZ 14060 (INT 60), NZ 14061 (INT 61), NZ 14065 (INT 65), NZ 14600 (INT 600), NZ 14601 (INT 601), NZ14600E, NZ200025, NZ300068**

*MV Polar Duke*  
NI 98/2015

**NZ 105(T)/15 NEW ZEALAND – North Island – West Coast – Cape Egmont Westwards – Subsea  
Construction Complete.**

*Former notice – NZ 47(T)/15 is cancelled.*

Cancel this notice on receipt.

**Charts formerly affected: NZ 21 (INT 641), NZ 23 (INT 640), NZ 25 (INT 648), NZ 43, NZ 45, NZ 48, NZ  
443, NZ 14060 (INT 60), NZ 14061 (INT 61), NZ 14600 (INT 600), NZ 14601 (INT 601), NZ14600E, NZ200023,  
NZ300045, NZ300443**

*MV Skandi Singapore*  
NI 99/2015

**NZ 106(T)/15 NEW ZEALAND – South Island – East Coast – Otago Peninsula Eastwards – Seismic  
Survey Complete.**

*Former notice – NZ 91(T)/15 is cancelled.*

Cancel this notice on receipt.

**Charts formerly affected: NZ 25 (INT 648), NZ 64, NZ 14600 (INT 600), NZ 14601 (INT 601), NZ14600E,  
NZ200025, NZ300064**

*MV Polarcus Naila*  
NI 97/2015

**NZ 107(T)/15 NEW ZEALAND – North Island – East Coast – Approaches to Napier – Dredging.**

*Former notice* – NZ 220(T)/13 is cancelled.

- \* 1. From May 2015 until further notice dredging of Napier Port and Approaches will be undertaken by suction dredge MV *Pelican* (call sign ZMNL).
- \* 2. MV *Pelican* can be contacted on VHF channels 12 & 16.
- 3. Vessels to keep clear of the dredge at all times.
- \* *Indicates new or revised entry*

**Charts temporarily affected: NZ 5612, NZ505612, NZ605612**

Hawkes Bay Regional Council  
NI 100/2015

### III

#### CORRECTIONS TO NEW ZEALAND LIGHT LIST

(NZ NTM Edition No. 9 dated 1 May 2015)

#### NEW ZEALAND NAUTICAL ALMANAC 2014/15 LIGHT LIST SECTION

3691.598	-- Prices	34 59.33 173 15.29	Q G	3	2	Green $\Delta$ on wooden pile 3	<i>fl 0.3, ec 0.7</i>
*	*	*	*	*	*	*	*
3838.35	-- No. 14A	36 48.46 174 39.14	Fl R 3s	2	2	Red $\square$ on red wooden pile beacon	
*	*	*	*	*	*	*	*

(NI 78, 84/2015)

### IV

#### CORRECTIONS TO SAILING DIRECTIONS AND NEW ZEALAND PUBLICATIONS

(NZ NTM Edition No. 9 dated 1 May 2015)

#### New Zealand Chart Catalogue 15<sup>th</sup> Edition, NZ 202

Page /Chart No.

Page 21

#### AUCKLAND ZONE

NZ 5314

Amend New Edition to, 5/2015

(NI 64/2015)

### V

#### NAVIGATIONAL WARNINGS

Warnings in force 29 April 2015

#### NAVAREA XIV

(South West Pacific)

- 40/15 SECURITE  
FM NAVAREA XIV COORDINATOR 162145 UTC APR 15  
NAVAREA XIV 40/15  
SOUTH PACIFIC OCEAN  
ARCHIPEL DES TUAMOTU
1. UNDERWATER OPERATIONS BY VESSEL L'ATALANTE  
BETWEEN 22 APR AND 5 MAY 15 IN AREA BOUNDED BY THE  
FOLLOWING POSITIONS:  
A: 17-00S 131-00W  
B: 23-00S 131-00W  
C: 23-00S 138-00W  
D: 17-00S 138-00W  
2. CANCEL THIS MESSAGE 060100 UTC MAY 15.
- 42/15 SECURITE  
FM NAVAREA XIV COORDINATOR 202245 UTC APR 15  
NAVAREA XIV 42/15  
SOUTH PACIFIC OCEAN  
NEW ZEALAND  
THE RCC NEW ZEALAND/TAUPO MARITIME RADIO INMARSAT C  
SES 451200067 IS UNAVAILABLE.  
INMARSAT MESSAGES SHOULD BE ADDRESSED TO EMAIL MARITIME [AT]  
KORDIA.CO.NZ  
THE OUTAGE DOES NOT AFFECT THE RECEPTION OF DISTRESS  
ALERTS, SAC MESSAGES OR TRANSMISSION OF MSI.

**V**

**NZ Coastal Navigational Warnings**  
(Area Z)

*Nil*

**VI**

**CORRECTIONS TO ADMIRALTY LIST OF RADIO SIGNALS**  
(NZ NTM Edition No. 9 dated 1 May 2015)

*Nil*



## HYDROGRAPHIC NOTE

(For instructions, see next page)

New Zealand Hydrographic Authority  
Land Information New Zealand  
Radio New Zealand House  
155 The Terrace  
PO Box 5501  
Wellington 6145  
New Zealand

Tel: 0800 665 463 or +64 (0)4 460 0110

Fax: +64 (0)4 460 0161

Email: [ntm@linz.govt.nz](mailto:ntm@linz.govt.nz)

Date ..... Ref. No. ....

Name and address of ship or sender

.....  
.....

Tel/Fax/Telex/Email of sender .....

General locality .....

Subject .....

Position. Lat. .... Long.....

Position fixing system used .....

Datum .....

Paper Chart/ENC affected ..... Edition.....

Dated .....

Latest Notice to Mariners held.....

Publications affected (Edition No. and date of latest supplement, page no., ID no. etc) .....

Details:

A replacement copy of Chart No. ....  
is required (see Instruction 4).

Signature of observer/reporter.....

# HYDROGRAPHIC NOTE

## Forwarding Information for Charts and Hydrographic Publications

**Note:** An acknowledgement of receipt will be sent and the information then used to the best advantage, which may mean immediate action or inclusion in a revision in due course. When a Notices to Mariners is issued, the sender's ship or name is quoted as authority unless (as sometimes happens) the information is also received in a foreign Notices to Mariners. An explanation of the use of contributions from all parts of the world would be too greater task and a further communication should only be expected when the information is of outstanding value or has unusual features.

### INSTRUCTIONS:

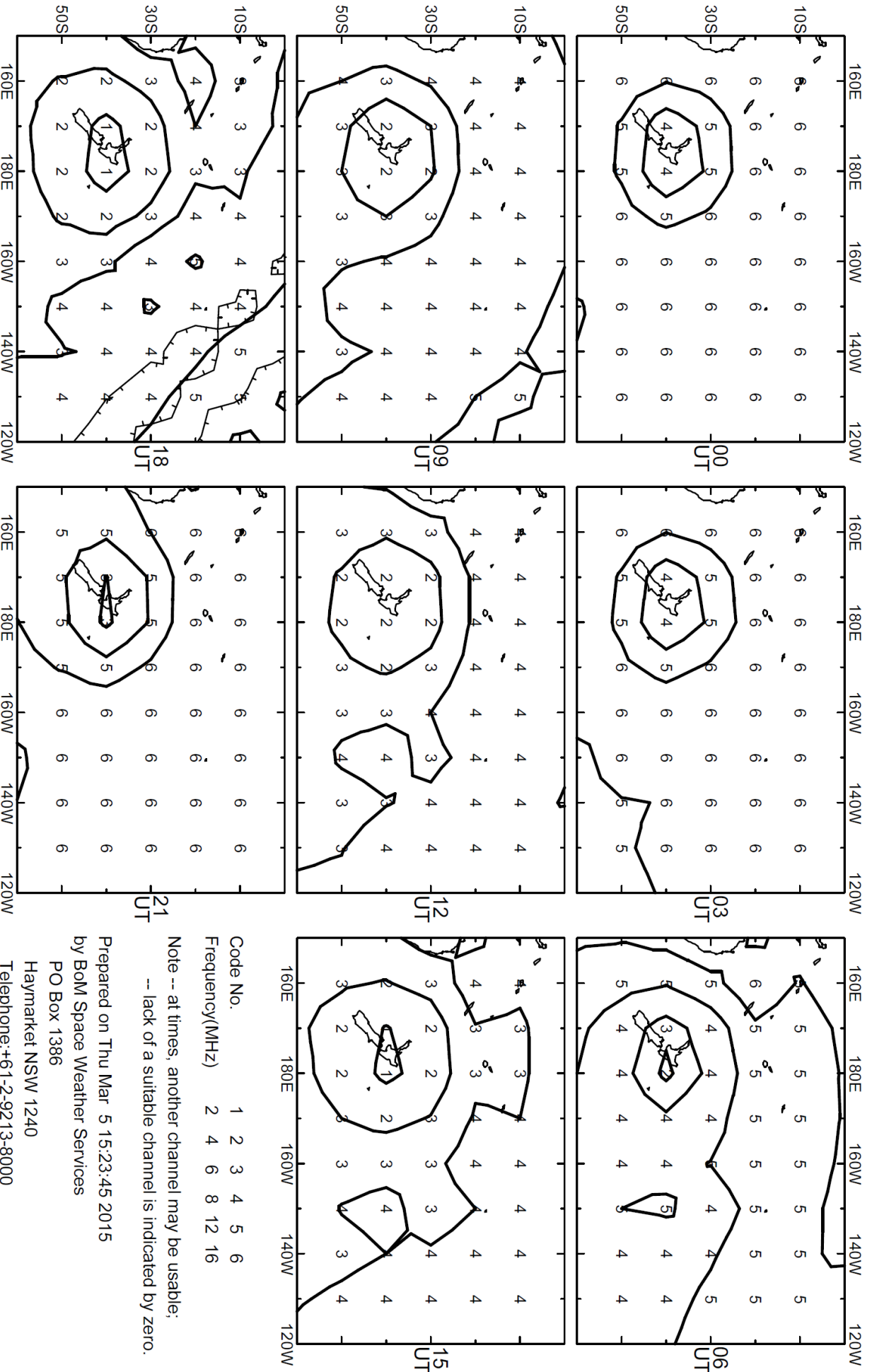
1. Mariners are requested to notify New Zealand Hydrographic Authority, Land Information New Zealand, 155 The Terrace, PO Box 5501, Wellington 6145, New Zealand, when new or suspected dangers to navigation are discovered, changes observed in aids to navigation, or corrections to publications seem to be necessary. The Admiralty publication, *The Mariner's Handbook* (NP 100), Chapter 4, gives general instructions.
2. This form and its instructions have been designed to help both the sender and the recipient. It should be used, or followed, closely, whenever appropriate. Copies of this form may be obtained gratis from the New Zealand Hydrographic Authority at the address above, or in PDF format directly from the LINZ website, [www.linz.govt.nz/hydro](http://www.linz.govt.nz/hydro). Hydrographic Notes can also be sent from mobile devices using the Hydrographic Notes Application available for [Android](#) and [Apple](#) devices.
3. When a position is defined by sextant angles or bearings (true or magnetic being specified) more than two should be used in order to provide a check. Distances observed by radar should be quoted. However, when there is a series of fixes along a ship's course, only the method of fixing and the objects used need to be indicated. Latitude and longitude should only be used specifically to position the details when they have been fixed by astronomical observations or GPS and a full description of the method, equipment and datum used should be given.
4. Paper Charts: A cutting from the largest scale paper chart is the best medium for forwarding details, the alterations and additions being shown thereon in red. When requested, a new copy will be sent in replacement of a chart that has been used to forward information, or when extensive observations have involved defacement of the observer's chart. If it is preferred to show the amendments on a tracing of the largest scale chart (rather than the chart itself) these should be in red as above, but adequate detail from the chart must be traced in black ink to enable the amendments to be fitted correctly.

Electronic Navigational Charts (ENCs): A screen dump of the largest scale usage band ENC with the alterations and additions being shown thereon in red.

5. When soundings are obtained, *The Mariners Handbook* (NP 100) should be consulted. The echo sounding trace should be marked with times, depths, etc., and forwarded with the report. It is important to state whether the echo sounder is set to register depths below the surface, or below the keel; in the latter case the vessel's draught should be given. Time and date should be given in order that corrections for the height of the tide may be made where necessary. The make, name, and type of echo sounder set should also be given.
6. Modern echo sounders frequently record greater depths than the set's nominal range, e.g. with a set whose maximum is 500m a trace appearing at 50m may in fact be 550m or even 1,050m. Erroneous deep soundings beyond the sets nominal range can usually be recognised by the following:
  - (a) The trace being weaker than normal for the depth registered
  - (b) The trace appearing to pass through the transmission line
  - (c) The "feathery" nature of the trace.
7. Reports which cannot be confirmed or are lacking in certain details should not be withheld. Shortcomings should be stressed and any firm expectation of being able to check the information on a succeeding voyage should be mentioned.
8. Reports of shoal soundings, uncharted dangers and navigational aids out of order should, at the mariner's discretion, also be made by radio to the nearest coast radio station. The draught of modern tankers is such that any uncharted depth under 30 metres or 15 fathoms may be of sufficient importance to justify a radio message.

# Recommended frequency bands for communication with Taupo May 2015 July 2015

To accompany New Zealand Notice to Mariners No. 96/15



# NAVXREA XIV

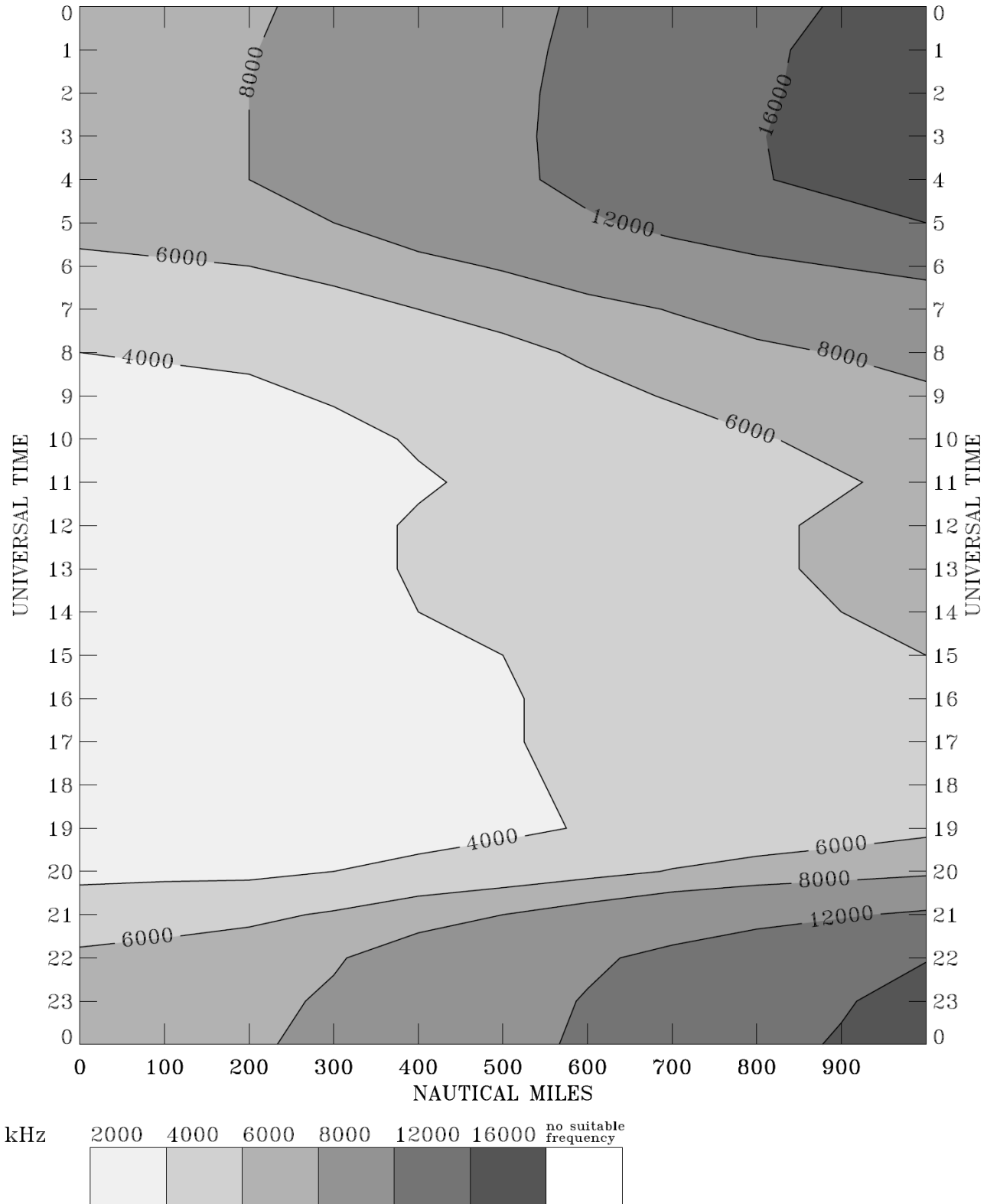


Chart: 1

Address No: 9038