

NEW ZEALAND NOTICES TO MARINERS

Notices
NZ 113 – 125

© Crown Copyright 2015. All rights Reserved. Permission is not required to make analogue copies of these Notices but such copies are not to be sold.

CONTENTS

- I [Explanatory Notes.](#)
 - II [New Zealand Notices to Mariners.](#)
 - III [Corrections to New Zealand Light List.](#)
 - IV [Corrections to Sailing Directions and New Zealand Publications.](#)
 - V [Navigational Warnings.](#)
 - VI [Corrections to Admiralty List of Radio Signals.](#)
-

New Zealand Notices to Mariners are the authority for correcting New Zealand charts within the New Zealand area of charting responsibility as shown in [Annual Notice No. 1](#).

Mariners are requested to immediately inform New Zealand Hydrographic Authority, Land Information New Zealand, 155 The Terrace, PO Box 5501, Wellington 6145, New Zealand, Phone: 0800 665 463 or +64 (0)4 460 0110, Fax: +64 (0)4 460 0161, email: ntm@linz.govt.nz, of the discovery of new or suspected dangers to navigation, or shortcomings in charts and publications. A copy of a Hydrographic Note, a convenient form on which to send such information, is included at the end of Section VI of the Fortnightly Notices to Mariners.

Changes or defects in aids to navigation should be reported to the Rescue Coordination Centre New Zealand (RCCNZ) via the nearest New Zealand Coastal Maritime Radio Station Phone: +64 (0)4 577 8030, Fax: +64 (0)4 577 8038 or +64 (0)4 577 8041, email: rccnz@maritimenz.govt.nz.

Copies of these Notices can be obtained from Land Information New Zealand, Maritime New Zealand, Principal Chart Agents at the major ports of New Zealand and the Internet: www.linz.govt.nz.

EXPLANATORY NOTES

Charts. The notices in Section II give instructions for the correction of charts. Geographical positions refer to the largest scale chart unless otherwise stated. They are normally given in degrees, minutes and decimals of a minute, but may occasionally quote seconds for convenience when plotting from the graduation of some older-style charts. Bearings are true reckoned clockwise from 000° to 359°; those relating to lights are given as seen by an observer from seaward. Symbols referred to are those shown in publication Chart 5011 (*INT 1*) Symbols and Abbreviations used on Admiralty Paper Charts, published by the United Kingdom Hydrographic Office.

Alterations to depth contours, deletion of depths to make way for new detail, etc. are not mentioned unless they have some navigational significance.

Block corrections or notes accompanying notices in Section II are placed after Section VI.

Temporary and Preliminary Notices. These are indicated by (T) or (P) after the notice number. A list of [\(T\) and \(P\) Notices in force](#) is published on the LINZ website and in the fortnightly Editions of Notices to Mariners. Charts are not corrected for them before issue; they should be corrected in pencil on receipt.

Light Lists. The detailed correction to the Light List is given in Section III and may not be published in the same edition as the chart correcting notice. The entire entry for each light is printed, and an asterisk (*) is shown under the column which contains an amendment. In the case of a new light, an asterisk (*) appears under all the columns. New and extensively altered entries are intended to be pasted in. It is recommended that a manuscript entry be made for all shorter corrections.

It is emphasized that the [List of Lights](#) is the authority for lights and that many alterations, especially those of a temporary but operational nature, may only be promulgated as corrections to the List of Lights.

Sailing Directions. Corrections to Sailing Directions are given in Section IV. It is recommended that such corrections be kept together in a file with the latest list of those in force on top. The file can then be consulted when using the Current Edition of the book to see if any notices affecting the area under consideration are extant. Corrections should not be pasted into the Current Edition of the book or Supplement.

New Zealand Publications. Corrections to New Zealand Publications are given in Section IV.

Navigational Warnings. NAVAREA XIV and NZ Coastal Navigational Warnings that are in force at the time of publication are given in Section V.

Radio Signals. When radio signals are affected by a notice the Admiralty List of Radio Signals reference number is quoted. The detailed correction to the List of Radio Signals is given in Section VI and may be published in a later edition than the chart correcting notice. It is recommended that such corrections be kept together in a file with the latest list of those in force on top. Corrections should not be pasted into the Current Edition of the book.

Correction of Charts and Publications by the User. New Zealand Notices to Mariners contain important information and should be used to keep the specified charts and books up to date.

THE USE OF CHARTS AND ASSOCIATED PUBLICATIONS

Reliance on Charts and Associated Publications. While every effort is made to ensure the accuracy of the information on New Zealand charts and other publications, it should be appreciated that it may not always be complete and up to date. The mariner must be the final judge of the reliance to be placed on the information given, bearing in mind their particular circumstances, local pilotage guidance and the judicious use of available navigational aids.

Charts. Charts should be used with prudence: there are areas where the source data are old, incomplete or of poor quality. The mariner should use the largest scale appropriate for his particular purpose; apart from being the most detailed, the larger scales are usually corrected first. When extensive new information (such as a new hydrographic survey) is received, some months may elapse before it can be fully incorporated in published charts. On small scale charts of ocean areas where hydrographic information is, in many cases, still sparse, charted shoals may be in error as regards position, least depth and extent. Undiscovered dangers may exist, particularly away from well-established routes.

Further guidance. The Mariner's Handbook (NP 100) gives a fuller explanation of the limitations of charts. All users should study it in their own interest.

ENC/ECDIS Data Presentation and Performance Check in Ships. The International Maritime Organization (IMO) has recently indicated its concerns about operating anomalies identified in some ECDIS that fail to display important new chart features.

The International Hydrographic Organization (IHO) has produced an ENC Data Presentation and Performance Check dataset that allows mariners to check their ECDIS. The check dataset is available through ENC service providers and from the IHO website (www.iho.int) which includes instructions.

Mariners are strongly recommended to use the dataset and report the results of their checks to help the IHO identify how the different brands of ECDIS display and handle chart information. Mariners are asked to also inform the IMO, national Hydrographic Offices, ECDIS manufacturers and others, so that they can take any corrective action that may be necessary.

In order to present the most comprehensive report possible to the IMO and to further assist in resolving the issues so far identified, the IHO is keen that as many ships as possible forward their results. Reports on the results can be sent via a form provided with the data or the results can be submitted on-line through a web-form.

All relevant documentation can be downloaded free from the IHO website at: www.iho.int.

II

NUMERICAL INDEX OF CHARTS AFFECTED
(NZ NTM Edition No. 11 dated 29 May 2015)

NZ Chart No.	INT Chart No.	ENC No.	Notice to Mariners
NZ 23	INT 640	NZ200023	122(T)
NZ 25	INT 648		122(T)
NZ 45		NZ300045	122(T)
NZ 48			122(T)
NZ 51			115
NZ 52			116
NZ 53			116, 117(T)
NZ 66			124(T)
NZ 522			116
NZ 531		NZ300531	117(T)
NZ 532			116
NZ 541		NZ300541	118(T), 119(P)
NZ 632		NZ400632	123(T)
NZ 661		NZ300661	124(T)
NZ 4633		NZ404633	125(T)
NZ 5113			115
NZ 5315		NZ505315	117(T)
NZ 5316			114
NZ 5318			117(T)
NZ 5411			114
NZ 5411		NZ405411	118(T), 119(P), 120(T), 121(P)
NZ 5412			113
NZ 5412		NZ505412	118(T), 120(T)
NZ 5413		NZ405413	118(T), 119(P)
NZ 6321		NZ506321	123(T)
NZ 6612		NZ506612	124(T)

II

NEW ZEALAND TEMPORARY AND PRELIMINARY NOTICES IN FORCE

(NZ NTM Edition No. 11 dated 29 May 2015)

NZ Notice	T/P	Charts Affected	Locality and Subject
		NZ Chart, ENC Cell	
242/09	P	NZ 42, NZ 4265	Kaipara Hr. Entrance: Depths
222/10	P	NZ 542	Whakatane: Depths
202/11	P	NZ 6142, NZ606142	Port Nelson: Light, Beacon, Works in Progress
211/12	P	NZ 61, NZ 614, NZ300061, NZ300614, NZ506141	North Coast, Golden Bay & Tasman Bay: Lights
147/13	P	NZ 521, NZ300521	East Coast, Poor Knights Islands: Depths
156/13	P	NZ 541, NZ 5413, NZ300541, NZ405413	East Coast, Tauranga, Motiti Island: Depths
169/13	P	NZ 5411, NZ405411	East Coast, Tauranga Harbour, Katikati Entrance: Buoy
172/13	P	NZ 6152	North Coast, Havelock: Lights, Beacons
194/13	P	NZ 5124	East Coast, Bay of Islands, Kerikeri Inlet: Light Beacons
221/13	P	NZ 4265	West Coast, Kaipara Harbour: Lights, Beacons, Buoys
41/14	P	NZ 268	Chatham Islands: Depths and Rocks
42/14	P	NZ 26, NZ 27, NZ 268	Chatham Islands: Areas to be avoided
45/14	P	NZ 632, NZ 6324, NZ406324	East Coast, Akaroa Harbour: Area of Restricted Access
132/14	T	NZ 6321, NZ506321, NZ606321	East Coast, Lyttelton Harbour: Light, Beacon
139/14	P	NZ 5612	East Coast, Approaches to Napier: Light Sectors
141/14	T	NZ 23 (INT 640), NZ 25 (INT 648), NZ 45, NZ 48, NZ200023, NZ300045	West Coast, South Taranaki Bight: Seabed Obstructions
156/14	P	NZ 82 (T 82), NZ 8238 (T 8238), NZ 8247 (T 8247), NZ 8248 (T 8248), NZ8259 (T 8259), NZ300082, NZ508238, NZ608238	Kingdom of Tonga, Ha'apai Group: Navigation Aids
171/14	P	NZ 521, NZ300521	East Coast, Whangarei Harbour: Directional light
210/14	P	NZ 8215, NZ508215	Kingdom of Tonga, Niuatoputapu: Navigation Aids
211/14	P	NZ 82 (T 82), NZ 827 (T 827), NZ 8275 (T 8275), NZ 8277 (T 8277), NZ300827, NZ408275, NZ508277	Kingdom of Tonga, Tongatapu: Navigation Aids
213/14	T	NZ 8655, NZ508655	Samoa, Approaches to Apia Harbour: Buoys
224/14	P	NZ 6422, NZ406422, NZ506422	East Coast; Timaru Harbour: Works, Exclusion Zone and Buoy
238/14	P	NZ 822 (T 822), NZ 8225 (T 8225), NZ400822, NZ508225	Kingdom of Tonga, Vava'u Group, Neiafu Harbour: Prohibited Area
245/14	P	NZ 531, NZ 534, NZ 5318, NZ300531	East Coast, Mercury Islands, Mercury Bay: Depths, Rocks
251/14	T	NZ 54, NZ 541, NZ 542, NZ 5413, NZ300541, NZ405413	East Coast, Tauranga, Astrolabe Reef: Exclusion Zone and Waverider Buoy
261/14	T	NZ 522, NZ 532, NZ 5227, NZ305322	East Coast, Kawau Bay, Matakana River: Works in Progress
263/14	P	NZ 62, NZ 63, NZ 6212, NZ300062, NZ462122	East Coast, Kaikoura: Marine Reserve
264/14	P	NZ 63, NZ 64, NZ 632, NZ 6324, NZ300063, NZ406324	East Coast, Banks Peninsula, Akaroa Harbour: Marine Reserve
275/14	P	NZ 8655, NZ508655	Samoa, Apia Harbour: Buoys and Breakwater
22/15	P	NZ 45, NZ 48, NZ300045	West Coast, Cape Egmont Westwards: Protected Area
24/15	P	NZ 82 (T 82), NZ 822 (T 822), NZ 8225 (T 8225), NZ300082, NZ400822, NZ508225	Kingdom of Tonga, Vava'u Group: Navigation Aids
29/15	T	NZ 632, NZ 6321, NZ400632, NZ506321, NZ606321	East Coast, Lyttelton Harbour, Sticking Point Eastwards: Exclusion Zone
51/15	T	NZ 14638 (INT 638)	Fiji, Viti Levu, Vanua Levu & Southern Lau Group: Lights
59/15	T	NZ 14065 (INT 65), NZ 14900 (INT 900), NZ14065E, NZ21490E	Ross Sea, Terra Nova Bay, Gerlache Inlet: Scientific Instrument
68/15	T	NZ 45, NZ 48, NZ 4541, NZ300045	West Coast, Wanganui, South Mole Head: Light Unlit
71/15	T	NZ 4314, NZ404314	West Coast, Manukau Harbour Entrance: Depths
73/15	P	NZ 614, NZ 615, NZ 6151, NZ 6152, NZ 6153, NZ 6154, NZ300614, NZ300615, NZ461531, NZ461532, NZ561541, NZ561542, NZ661542	Marlborough Sounds: Use of Automated Navigation Systems
90/15	T	NZ 7142, NZ407142, NZ507142	West Coast, Greymouth Harbour: Depths
96/15	T		Maritime Safety Broadcasts
97/15	P	NZ 5113	East Coast, Houhora & Rangaunu Harbour: Aids to Navigation
98/15	T	NZ 23 (INT 640), NZ 26, NZ 55, NZ 56, NZ 14600 (INT 600), NZ200023, NZ300055, NZ300056, NZ14600E	East Coast, Poverty Bay, Eastwards: Scientific Instruments
99/15	T	NZ 23 (INT 640), NZ 26, NZ 58, NZ 14600 (INT 600), NZ200023, NZ300058, NZ14600E	East Coast, Honeycomb Southeastwards: Scientific Instruments
101/15	T	NZ 61, NZ 614, NZ 6144, NZ300614, NZ406144	North Coast, Tasman Bay and Golden Bay: Spat

II

NZ Notice	T/P	Charts Affected	Locality and Subject
		NZ Chart, ENC Cell	
107/15	T	NZ 5612, NZ505612, NZ605612	Catching Areas East Coast, Napier: Dredging
119/15	P	NZ 541, NZ 5411, NZ 5413, NZ300541, NZ405411, NZ405413	East Coast, Tauranga, Port of Tauranga: Works
121/15	P	NZ 5411, NZ405411	East Coast, Tauranga: Lights
122/15	T	NZ 23 (INT 640), NZ 25 (INT 648), NZ 45, NZ 48, NZ200023, NZ300045	West Coast, South Taranaki Bight: Drilling Operations
124/15	T	NZ 66, NZ 661, NZ 6612, NZ300661, NZ506612	East Coast, Approaches to Otago Harbour: Scientific Instruments
125/15	T	NZ 4633, NZ404633	South Coast, Wellington, Lyall Bay, Lit Buoy Removed

NZ 113/15 NEW ZEALAND PUBLICATIONS – Paper Chart.

(1) New Edition Published.

<i>Chart</i>	<i>Published</i>	<i>Title and other remarks</i>	<i>Scale 1:</i>	<i>Page of 15th. Edition NZ 202</i>
NZ 5412	May 15	Port of Tauranga		
		<i>New edition incorporating new survey data, changes to aids to navigation, new coastline of Matakana Island and general updating throughout.</i>	10 000	18 & 19
		37° 36'.000S. – 37° 41'.444S. 176° 07'.310E. – 176° 11'.690E.		
		Western Channel (Continuation)		
		37° 38'.093S. – 37° 39'.144S. 176° 05'.511E. – 176° 07'.713E.		

(2) Chart Permanently Withdrawn.

<i>Chart</i>	<i>On Publication of New Edition</i>	<i>Date</i>
NZ 5412 (2004)	NZ 5412	May 15

New Zealand Hydrographic Authority
NI 108/2015

NZ 114/15 NEW ZEALAND PUBLICATIONS – Paper Charts.

New Chart to be Published Shortly.

Chart No. Title

NZ 5316 Whitianga Harbour

New Edition to be Published Shortly.

Chart No. Title

NZ 5411 Tauranga Harbour Katikati Entrance to Mount Maunganui

New Zealand Hydrographic Authority
NI 118/2015

NZ 115/15 NEW ZEALAND – North Island – East Coast – Rangaunu Bay – Depths.

Chart NZ 51 [32/14]

Replace depth 7₃ Rep (1992) with depth 12₅ (a) 34° 48'.53S., 173° 12'.02E.

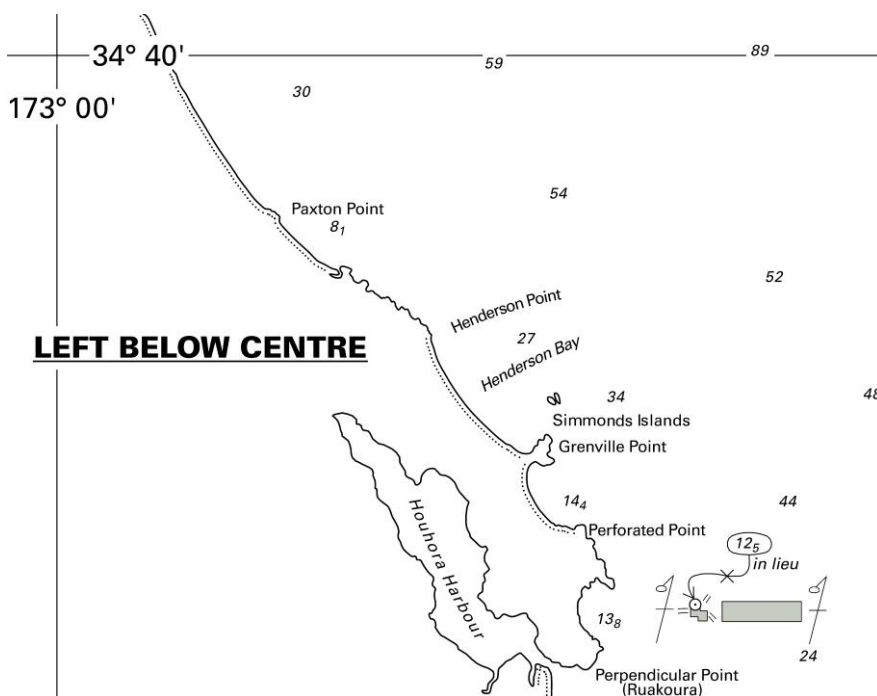
Delete 10m contour centred on: (a) above

Chart NZ 5113 (plan, Rangaunu Bay and Awanui River Approaches) [203/14]

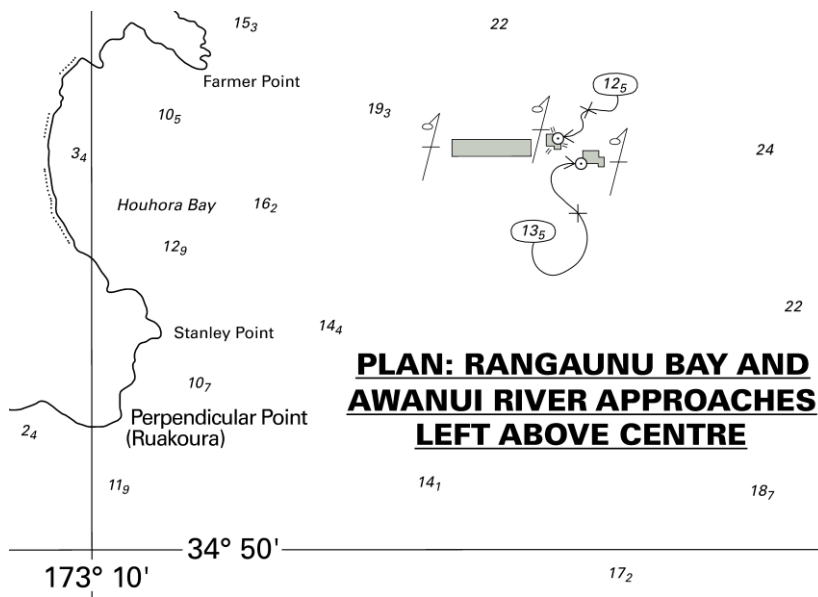
Insert depth 12₅ (a) 34° 48'.53S., 173° 12'.02E.
depth 13₅ (b) 34° 48'.62S., 173° 12'.12E.

Delete depth 7₃ Rep (1992) and associated 10m contour: close (a) above
depth 18₁: close NE of (b) above

Discovery Marine Ltd.
NI 123/2015



<i>Issued as a guide to chart correction.</i>		<i>Use in conjunction with the appropriate NZ Notice to Mariners.</i>	
LAST CORRECTION	NZ NTM No.	CHART No.	
NZ 32/14	NZ 115/15	NZ 51	



**PLAN: RANGAUNU BAY AND
AWANUI RIVER APPROACHES
LEFT ABOVE CENTRE**

<i>Issued as a guide to chart correction.</i>		<i>Use in conjunction with the appropriate NZ Notice to Mariners.</i>	
LAST CORRECTION	NZ NTM No.	CHART No.	
NZ 203/14	NZ 115/15	NZ 5113	

NZ 116/15 NEW ZEALAND – North Island – East Coast – Hauraki Gulf – Anchorite Rock – Lit Buoy.

Chart NZ 52 [48/14]

Insert  ODAS FI(5)Y.20s 36° 25'.87S., 175° 07'.74E.
Y

Chart NZ 53 [87/15]

Insert  ODAS FI(5)Y.20s 36° 25'.87S., 175° 07'.74E.
Y

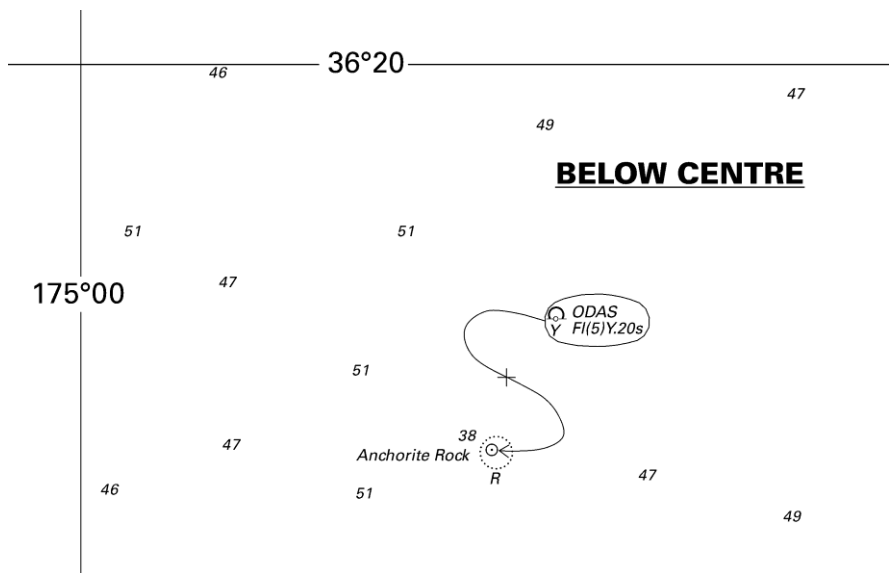
Chart NZ 522 [228/14]

Insert  ODAS FI(5)Y.20s 36° 25'.87S., 175° 07'.74E.
Y

Chart NZ 532 [87/15]

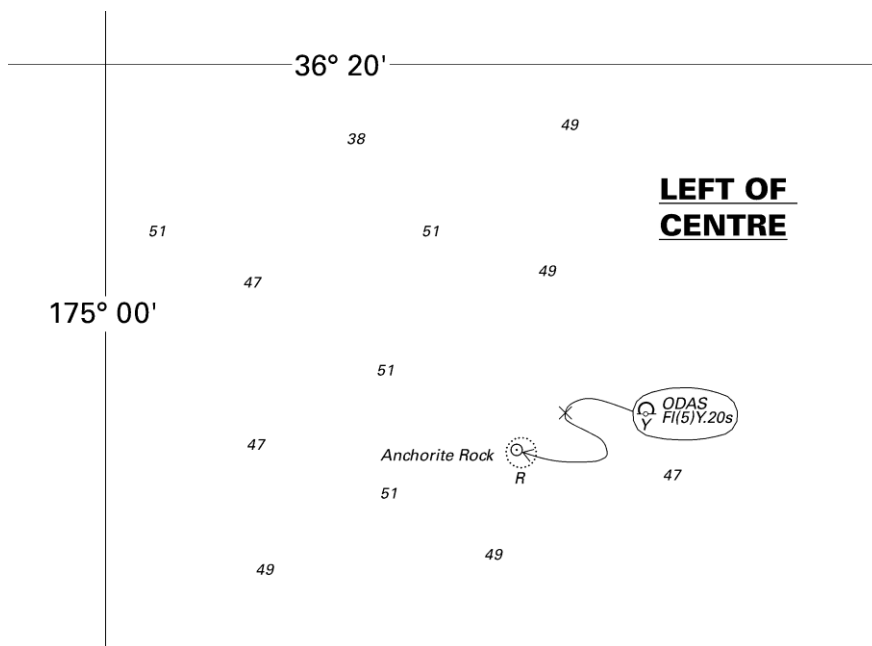
Insert  ODAS FI(5)Y.20s 36° 25'.87S., 175° 07'.74E.
Y

Auckland Council
NI 116/2015

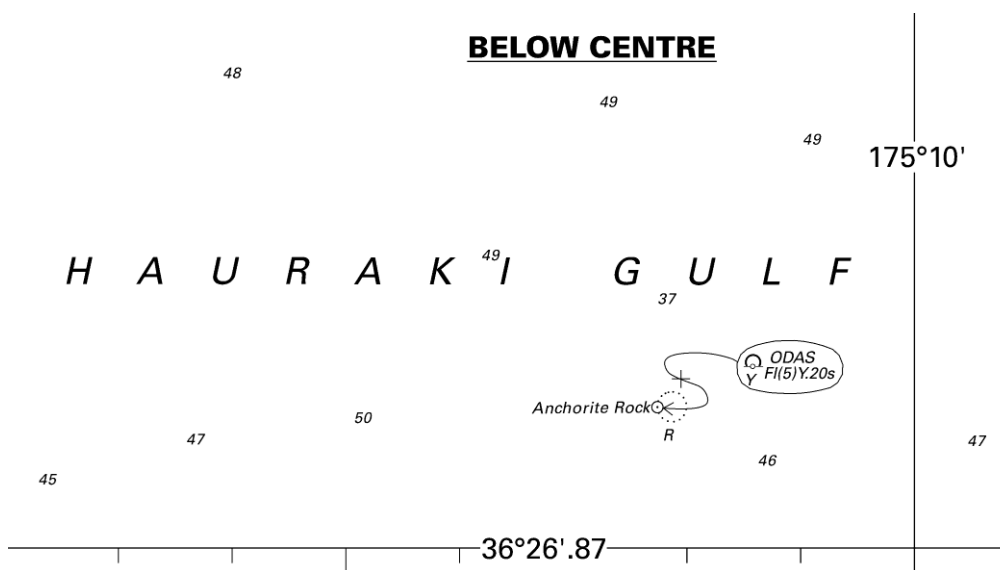


<i>Issued as a guide to chart correction.</i>		<i>Use in conjunction with the appropriate NZ Notice to Mariners.</i>	
LAST CORRECTION	NZ NTM No.	CHART No.	
NZ 48/14	NZ 116/15	NZ 52	

Continued

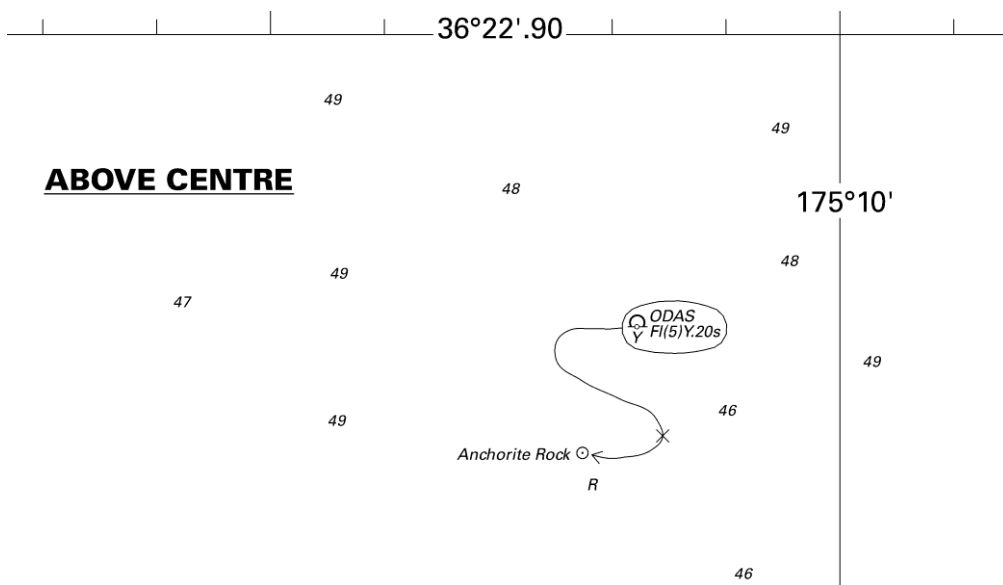


<i>Issued as a guide to chart correction.</i>		<i>Use in conjunction with the appropriate NZ Notice to Mariners.</i>	
LAST CORRECTION	NZ NTM No.	CHART No.	
NZ 87/15	NZ 116/15	NZ 53	



<i>Issued as a guide to chart correction.</i>		<i>Use in conjunction with the appropriate NZ Notice to Mariners.</i>	
LAST CORRECTION	NZ NTM No.	CHART No.	
NZ 228/14	NZ 116/15	NZ 522	

Continued



<i>Issued as a guide to chart correction.</i>		<i>Use in conjunction with the appropriate NZ Notice to Mariners.</i>	
LAST CORRECTION	NZ NTM No.	CHART No.	
NZ 87/15	NZ 116/15	NZ 532	

**NZ 117(T)/15 NEW ZEALAND – North Island – East Coast – Mercury Bay – Scientific Instruments
Recovered.**

Former notice – NZ 80(T)/15 is cancelled.

Cancel this notice on receipt.

Charts formerly affected: NZ 53, NZ 531, NZ 5315, NZ 5318, NZ300531, NZ505315

University of Waikato
NI 121/2015

NZ 118(T)/15 NEW ZEALAND – North Island – East Coast – Tauranga Harbour – Port of Tauranga – Works.

Former notice – NZ 85(P)/13 is cancelled.

Cancel this notice on receipt.

Charts formerly affected: NZ 541, NZ 5411, NZ 5412, NZ 5413, NZ300541, NZ405411, NZ405413, NZ505412

Port of Tauranga
NI 104/2015

NZ 119(P)/15 NEW ZEALAND – North Island – Tauranga – Port of Tauranga – Works.

1. Port development has taken place in Tauranga Harbour. Sulphur Point Wharf has been extended to approximate position 37°39'.49S., 176°10'.55E.
2. Mariners are advised to exercise caution when navigating in the area.
3. Charting action will take place in due course.

Charts affected: NZ 541, NZ 5411, NZ 5413, NZ300541, NZ405411, NZ405413

Port of Tauranga
NI 105/2015

NZ 120(T)/15 NEW ZEALAND – North Island – East Coast – Tauranga – Lights.

Former notice – NZ 20(P)/11 is cancelled.

Cancel this notice on receipt.

Charts formerly affected: NZ 5411, NZ 5412, NZ405411, NZ505412

Bay of Plenty Regional Council
NI 102/2015

NZ 121(P)/15 NEW ZEALAND – North Island – East Coast – Tauranga – Lights.

1. Lights have been established on the following beacons:

<i>Name</i>	<i>Characteristics</i>	<i>Position</i>	<i>Type</i>
Western 'E'	Fl.R.3s	37°37'.27S., 176°03'.18E.	Port lateral mark, red can topmark
OP	Fl.R.3s	37°38'.00S., 176°03'.32E.	Starboard lateral mark, green cone topmark
Motuhoa	Fl.R.3s	37°37'.93S., 176°04'.46E.	Starboard lateral mark, green cone topmark

2. Charting action will take place in due course.

Chart affected: NZ 5411, NZ405411

Bay of Plenty Regional Council
NI 103/2015

NZ 122(T)/15 NEW ZEALAND – North Island – West Coast – South Taranaki Bight – Drilling Operations.

Former notice – NZ 56(T)/15 is cancelled.

1. Drilling operations are being performed by jack-up drilling rig *ENSCO 107* (call sign A8GS5) in the Maari Field.
2. Vessels MV *Pacific Ranger* (call sign S6GS3) and MV *Pacific Worker* (call sign 9V6086) are in support.
3. Listening watch is being maintained on VHF channel 16.
4. All vessels are requested to pass 2NM clear of the locality specified in paragraph 5.2 below.

Non-interference Zone

5. Pursuant to section 101B of the Crown Minerals Act 1991, the Chief Executive of the Ministry of Business, Innovation, and Employment hereby gives notice of a non-interference zone in relation to the *ENSCO 107* in Petroleum Mining Permit 38160.

5.1 The non-interference zone relates to the following activities:

- a) Drilling operations and well evaluation undertaken by the *ENSCO 107*.
- b) The recovery of the anchors and removal of the *ENSCO 107* from the cantilevering position over the Maari production platform, on completion of the activities in (a) above.

5.2 The locality of the activities is bounded by the following positions:

- a) 39° 58'.34S., 173° 16'.61E.
- b) 39° 58'.34S., 173° 18'.61E.
- c) 39° 59'.96S., 173° 18'.61E.
- d) 39° 59'.96S., 173° 16'.61E.

5.3 The area of the non-interference zone is 500m from any point on the outer edge of the *ENSCO 107* and from any point on the outer edge of the equipment attached to the *ENSCO 107* that is involved with any activity as set out above.

* 5.4 This notice has effect from 30 May 2015 to 29 August 2015 (both days inclusive).

5.5 Refer to Annual New Zealand Notices to Mariners, No.16A, which can be found in the New Zealand Nautical Almanac (NZ 204) and on the LINZ website www.linz.govt.nz.

* *Indicates revised entry.*

Charts temporarily affected: NZ 23 (INT 640), NZ 25 (INT 648), NZ 45, NZ 48, NZ200023, NZ300045

ENSCO 107

Chief Executive of the Ministry of Business, Innovation and Employment (in respect of the Non-interference Zone)
NI 119/2015

NZ 123(T)/15 NEW ZEALAND – South Island – East Coast – Lyttelton Harbour – Lit Buoy Reinstated.

Former notice – NZ 75(T)/15 is cancelled.

Cancel this notice on receipt.

Charts formerly affected: NZ 632, NZ 6321, NZ400632, NZ506321

Lyttelton Port of Christchurch
NI 115/2015

NZ 124(T)/15 NEW ZEALAND – South Island – East Coast – Approaches to Otago Harbour – Scientific Instruments.

Former notice – NZ 85(T)/15 is cancelled.

1. A seabed current meter marked by a lit yellow buoy, *FI(5)Y.20s* has been deployed in the following position until further notice:

45° 45'.24S., 170° 42'.42E.

2. Lit yellow scientific buoys, *FI(5)Y.20s* have been deployed in the following positions until further notice:

* 45° 44'.94S., 170° 47'.91E.
45° 43'.56S., 170° 47'.15E.
45° 37'.02S., 170° 42'.99E.

3. Mariners are advised to exercise caution when navigating in the area.

* Indicates revised entry.

Charts temporarily affected: NZ 66, NZ 661, NZ 6612, NZ300661, NZ506612

Port Otago Ltd.
NI 122/2015

NZ 125(T)/15 NEW ZEALAND – North Island – North Island – South Coast – Wellington – Lyall Bay – Lit Buoy Removed.

1. Lit yellow buoy in position 41°20'.34S., 174°48'.27E. has been removed until further notice.
2. Mariners are advised to exercise caution when navigating in the area.

Charts temporarily affected: NZ 4633, NZ404633

Wellington Airport
NI 126/2015

III

CORRECTIONS TO NEW ZEALAND LIGHT LIST
(NZ NTM Edition No.11 dated 29 May 2015)

NEW ZEALAND NAUTICAL ALMANAC 2014/15
LIGHT LIST SECTION

3899.4	No. 1 Reach Ldg Lts. Front	37 38.03 176 09.48	F G	11		White ◻ daymark black stripe 13	Neon ◻
	- Dir Lt 209°		Dir WRG	12	W6 R4 G4	Same structure	AI WG 207.25°-208.125° (0.875°) F W 208.125°-209.875° (1.75°) AI WR 209.875°-210.75° (0.875°) Occas on request to Port of Tauranga
	Cutter Channel. Outbound. Dir Lt 298.25°		Dir WRG	12		Same structure	F G 292.5°-293° (0.5°) AI WG 293°-298° (5°) W phase increasing with bearing F W 298°-298.5°(0.5°) AI W R 298.5°-303.5° (5°) R phase increasing with bearing F R 303.5°-305.5° (2°) Iso R 3s 305.5°-307.5° (2°) Intens by day on request to Port of Tauranga
3904.29	Cutter Channel	37 38.65 176 10.94	F W	35		◻ on orange and white tower 35	Neon ◻
*	*	*	*	*		*	*
3912	Delete from list						
3913	Town Reach. No. 8	37 40.12 176 10.60	Q R	3	2	Red ◻ on red beacon	
3916	Delete from list						
3917	Delete from list						
3919	Hunters Creek	37 38.44 176 08.08	Q(2+1)G 6s	7	5	Green △ on green concrete pile beacon, with red band	<i>fl 0.3, ec 0.7, fl 0.3, ec 1.7, fl 0.3, ec 2.7</i>
3919.01	- HC1	37 38.44 176 08.18	FI G 3s	2	1	Green pile beacon 2	
*	*	*	*	*	*	*	*
3919.02	- HC2	37 38.33 176 07.89	FI R 3s	2	1	Red pile beacon 2	
*	*	*	*	*	*	*	*
3919.03	- HC3	37 38.34 176 08.07	FI G 3s	2	1	Green pile beacon 2	
*	*	*	*	*	*	*	*
3919.035	- HC3A	37 38.32 176 07.95	FI G	2	1	Green △ on green pile beacon 2	
*	*	*	*	*	*	*	*
3919.04	- HC5	37 38.21 176 07.82	FI G 3s	2	1	Green △ on green pile beacon 2	
*	*	*	*	*	*	*	*
3919.05	- HC7	37 38.14 176 07.72	FI G 3s	2	1	Green pile beacon 2	
*	*	*	*	*	*	*	*
3919.303	- WC14	37 38.84 176 06.90	Q R	3	2	Red ◻ on red beacon 3	
*	*	*	*	*	*	*	*
3919.305	- WC16	37 38.88 176 06.37	FI R 3s	2	1	Red ◻ on red beacon 2	<i>fl 0.3, ec 2.7</i>
*	*	*	*	*	*	*	*

3919.306	- WC18	37 38.98 176 05.93	FI R 3s	2	2	Red □ on red beacon 2	<i>fl 0.3, ec 2.7</i>
			*			*	*
3919.307	- WC18B	37 39.14 176 05.57	FI R 3s	2	2	Red □ on red beacon 2	<i>fl 1, ec 2</i>
			*			*	*
3919.325	Rangiwaera A	37 38.40 176 06.23	Q(2+1)R 10s		2	Red □ on red beacon with green band	
			*			*	
3919.327	Rangiwaera B	37 38.26 176 06.04	FI R 3s	2	1	Red □ on red beacon 2	<i>fl 0.3, ec 2.7</i>
			*	*	*	*	*
3920.351	Waikareao Estuary. WK1	37 39.73 176 09.84	Q G	2	1	Green beacon 2	
			*	*	*	*	*
3920.352	- WK2	37 39.83 176 09.91	FI R 3s	2	1	Red □ on red beacon 2	<i>fl 0.3, ec 2.7</i>
			*	*	*	*	*
3920.353	- WK3	37 39.85 176 09.88	FI G 3s	2	1	Green beacon 2	<i>fl 0.3, ec 2.7</i>
			*	*	*	*	*
3920.354	- WK4	37 39.97 176 09.95	FI R 3s	2	1	Red beacon 2	<i>fl 0.3, ec 2.7</i>
			*	*	*	*	*
3920.355	- WK5	37 39.96 176 09.91	FI G 3s	2	1	Green beacon 2	<i>fl 0.3, ec 2.7</i>
			*	*	*	*	*
3920.356	- WK7	37 40.05 176 09.90	FI G 3s	2	1	Green beacon 2	<i>fl 0.3, ec 2.7</i>
			*	*	*	*	*
3920.357	- WK9	37 40.17 176 09.89	FI G 3s	2	1	Green △ on green beacon 2	<i>fl 0.3, ec 2.7</i>
			*	*	*	*	*
3920.4	Otumoetai Channel. Otumoetai 'B'	37 39.32 176 09.48	Q G			Green △ on green pile beacon	<i>Vis 260°-111° (211°)</i>
			*				*

(NI 108/2015)

IV

CORRECTIONS TO SAILING DIRECTIONS AND NEW ZEALAND PUBLICATIONS (NZ NTM Edition No. 11 dated 29 May 2015)

New Zealand Chart Catalogue 15th Edition, NZ 202

Page / Chart No.

Page 19

NORTHERN ZONE

NZ 5412

Amend New Edition date to 5/2015

(NI 108/2015)

V

NAVIGATIONAL WARNINGS

Warnings in force 27 May 2015

NAVAREA XIV

(South West Pacific)

42/15 FM NAVAREA XIV COORDINATOR 202245 UTC APR 15
NAVAREA XIV 42/15
SOUTH PACIFIC OCEAN
NEW ZEALAND
THE RCC NEW ZEALAND/TAUPO MARITIME RADIO INMARSAT C SES 451200067 IS
UNAVAILABLE.
INMARSAT MESSAGES SHOULD BE ADDRESSED TO EMAIL MARITIME [AT]
KORDIA.CO.NZ
THE OUTAGE DOES NOT AFFECT THE RECEPTION OF DISTRESS ALERTS, SAC
MESSAGES OR TRANSMISSION OF MSI.

NZ Coastal Navigational Warnings

(Area Z)

92/15 FM: RCC NEW ZEALAND 170010 UTC MAY 15
COASTAL NAVIGATION WARNING 92/15
AREA RAGLAN AND TASMAN SEA
1. SURVEY IN PROGRESS BY RV GEO RESOLUTION V7IE2 ACROSS THE TASMAN SEA
FROM 37-43S 174-33E TO NARRABEEN AUSTRALIA 33-43S 151-18E. A 1.0 NAUTICAL MILE
CLEARANCE IS REQUESTED.
2. A NAVAREA X WARNING WILL BE ISSUED ONCE OPERATIONS LEAVE THE NEW
ZEALAND COASTAL WARNING AREA.

97/15 FM: RCC NEW ZEALAND 212300 UTC MAY 15
COASTAL NAVIGATION WARNING 97/15
AREA COLVILLE
CUVIER ISLAND, BAY OF PLENTY
1. LIVE FIRING 272000 UTC TO 280000 UTC MAY 15 IN DANGER AREA M204.
ANNUAL NEW ZEALAND NOTICES TO MARINERS NUMBER 5 REFERS.
2. CANCEL THIS MESSAGE 280100 UTC MAY 15

VI

CORRECTIONS TO ADMIRALTY LIST OF RADIO SIGNALS

(NZ NTM Edition No. 11 dated 29 May 2015)

Nil

HYDROGRAPHIC NOTE

(For instructions, see next page)

New Zealand Hydrographic Authority
Land Information New Zealand
Radio New Zealand House
155 The Terrace
PO Box 5501
Wellington 6145
New Zealand

Tel: 0800 665 463 or +64 (0)4 460 0110

Fax: +64 (0)4 460 0161

Email: ntm@linz.govt.nz

Date Ref. No.

Name and address of ship or sender

.....
.....

Tel/Fax/Telex/Email of sender

General locality

Subject

Position. Lat. Long.

Position fixing system used

Datum

Paper Chart/ENC affected Edition

Dated

Latest Notice to Mariners held

Publications affected (Edition No. and date of latest supplement, page no., ID no. etc)

Details:

A replacement copy of Chart No.
is required (see Instruction 4).

Signature of observer/reporter

HYDROGRAPHIC NOTE

Forwarding Information for Charts and Hydrographic Publications

Note: An acknowledgement of receipt will be sent and the information then used to the best advantage, which may mean immediate action or inclusion in a revision in due course. When a Notices to Mariners is issued, the sender's ship or name is quoted as authority unless (as sometimes happens) the information is also received in a foreign Notices to Mariners. An explanation of the use of contributions from all parts of the world would be too greater task and a further communication should only be expected when the information is of outstanding value or has unusual features.

INSTRUCTIONS:

1. Mariners are requested to notify New Zealand Hydrographic Authority, Land Information New Zealand, 155 The Terrace, PO Box 5501, Wellington 6145, New Zealand, when new or suspected dangers to navigation are discovered, changes observed in aids to navigation, or corrections to publications seem to be necessary. The Admiralty publication, *The Mariner's Handbook* (NP 100), Chapter 4, gives general instructions.
2. This form and its instructions have been designed to help both the sender and the recipient. It should be used, or followed, closely, whenever appropriate. Copies of this form may be obtained gratis from the New Zealand Hydrographic Authority at the address above, or in PDF format directly from the LINZ website, www.linz.govt.nz/hydro. Hydrographic Notes can also be sent from mobile devices using the Hydrographic Notes Application available for [Android](#) and [Apple](#) devices.
3. When a position is defined by sextant angles or bearings (true or magnetic being specified) more than two should be used in order to provide a check. Distances observed by radar should be quoted. However, when there is a series of fixes along a ship's course, only the method of fixing and the objects used need to be indicated. Latitude and longitude should only be used specifically to position the details when they have been fixed by astronomical observations or GPS and a full description of the method, equipment and datum used should be given.
4. Paper Charts: A cutting from the largest scale paper chart is the best medium for forwarding details, the alterations and additions being shown thereon in red. When requested, a new copy will be sent in replacement of a chart that has been used to forward information, or when extensive observations have involved defacement of the observer's chart. If it is preferred to show the amendments on a tracing of the largest scale chart (rather than the chart itself) these should be in red as above, but adequate detail from the chart must be traced in black ink to enable the amendments to be fitted correctly.

Electronic Navigational Charts (ENCs): A screen dump of the largest scale usage band ENC with the alterations and additions being shown thereon in red.

5. When soundings are obtained, *The Mariners Handbook* (NP 100) should be consulted. The echo sounding trace should be marked with times, depths, etc., and forwarded with the report. It is important to state whether the echo sounder is set to register depths below the surface, or below the keel; in the latter case the vessel's draught should be given. Time and date should be given in order that corrections for the height of the tide may be made where necessary. The make, name, and type of echo sounder set should also be given.
6. Modern echo sounders frequently record greater depths than the set's nominal range, e.g. with a set whose maximum is 500m a trace appearing at 50m may in fact be 550m or even 1,050m. Erroneous deep soundings beyond the sets nominal range can usually be recognised by the following:
 - (a) The trace being weaker than normal for the depth registered
 - (b) The trace appearing to pass through the transmission line
 - (c) The "feathery" nature of the trace.
7. Reports which cannot be confirmed or are lacking in certain details should not be withheld. Shortcomings should be stressed and any firm expectation of being able to check the information on a succeeding voyage should be mentioned.
8. Reports of shoal soundings, uncharted dangers and navigational aids out of order should, at the mariner's discretion, also be made by radio to the nearest coast radio station. The draught of modern tankers is such that any uncharted depth under 30 metres or 15 fathoms may be of sufficient importance to justify a radio message.