

# NEW ZEALAND NOTICES TO MARINERS

*Notices*  
**NZ 126 – 134**

© Crown Copyright 2015. All rights Reserved. Permission is not required to make analogue copies of these Notices but such copies are not to be sold.

---

## CONTENTS

- I [Explanatory Notes.](#)
  - II [New Zealand Notices to Mariners.](#)
  - III [Corrections to New Zealand Light List.](#)
  - IV [Corrections to Sailing Directions and New Zealand Publications.](#)
  - V [Navigational Warnings.](#)
  - VI [Corrections to Admiralty List of Radio Signals.](#)
- 

New Zealand Notices to Mariners are the authority for correcting New Zealand charts within the New Zealand area of charting responsibility as shown in [Annual Notice No. 1](#).

Mariners are requested to immediately inform New Zealand Hydrographic Authority, Land Information New Zealand, 155 The Terrace, PO Box 5501, Wellington 6145, New Zealand, Phone: 0800 665 463 or +64 (0)4 460 0110, Fax: +64 (0)4 460 0161, email: [ntm@linz.govt.nz](mailto:ntm@linz.govt.nz), of the discovery of new or suspected dangers to navigation, or shortcomings in charts and publications. A copy of a Hydrographic Note, a convenient form on which to send such information, is included at the end of Section VI of the Fortnightly Notices to Mariners.

Changes or defects in aids to navigation should be reported to the Rescue Coordination Centre New Zealand (RCCNZ) via the nearest New Zealand Coastal Maritime Radio Station Phone: +64 (0)4 577 8030, Fax: +64 (0)4 577 8038 or +64 (0)4 577 8041, email: [rccnz@maritimenz.govt.nz](mailto:rccnz@maritimenz.govt.nz).

Copies of these Notices can be obtained from Land Information New Zealand, Maritime New Zealand, Principal Chart Agents at the major ports of New Zealand and the Internet: [www.linz.govt.nz](http://www.linz.govt.nz).

## EXPLANATORY NOTES

**Charts.** The notices in Section II give instructions for the correction of charts. Geographical positions refer to the largest scale chart unless otherwise stated. They are normally given in degrees, minutes and decimals of a minute, but may occasionally quote seconds for convenience when plotting from the graduation of some older-style charts. Bearings are true reckoned clockwise from 000° to 359°; those relating to lights are given as seen by an observer from seaward. Symbols referred to are those shown in publication Chart 5011 (*INT 1*) Symbols and Abbreviations used on Admiralty Paper Charts, published by the United Kingdom Hydrographic Office.

Alterations to depth contours, deletion of depths to make way for new detail, etc. are not mentioned unless they have some navigational significance.

Block corrections or notes accompanying notices in Section II are placed after Section VI.

**Temporary and Preliminary Notices.** These are indicated by (T) or (P) after the notice number. A list of [\(T\) and \(P\) Notices in force](#) is published on the LINZ website and in the fortnightly Editions of Notices to Mariners. Charts are not corrected for them before issue; they should be corrected in pencil on receipt.

**Light Lists.** The detailed correction to the Light List is given in Section III and may not be published in the same edition as the chart correcting notice. The entire entry for each light is printed, and an asterisk (\*) is shown under the column which contains an amendment. In the case of a new light, an asterisk (\*) appears under all the columns. New and extensively altered entries are intended to be pasted in. It is recommended that a manuscript entry be made for all shorter corrections.

It is emphasized that the [List of Lights](#) is the authority for lights and that many alterations, especially those of a temporary but operational nature, may only be promulgated as corrections to the List of Lights.

**Sailing Directions.** Corrections to Sailing Directions are given in Section IV. It is recommended that such corrections be kept together in a file with the latest list of those in force on top. The file can then be consulted when using the Current Edition of the book to see if any notices affecting the area under consideration are extant. Corrections should not be pasted into the Current Edition of the book or Supplement.

**New Zealand Publications.** Corrections to New Zealand Publications are given in Section IV.

**Navigational Warnings.** NAVAREA XIV and NZ Coastal Navigational Warnings that are in force at the time of publication are given in Section V.

**Radio Signals.** When radio signals are affected by a notice the Admiralty List of Radio Signals reference number is quoted. The detailed correction to the List of Radio Signals is given in Section VI and may be published in a later edition than the chart correcting notice. It is recommended that such corrections be kept together in a file with the latest list of those in force on top. Corrections should not be pasted into the Current Edition of the book.

**Correction of Charts and Publications by the User.** New Zealand Notices to Mariners contain important information and should be used to keep the specified charts and books up to date.

## THE USE OF CHARTS AND ASSOCIATED PUBLICATIONS

**Reliance on Charts and Associated Publications.** While every effort is made to ensure the accuracy of the information on New Zealand charts and other publications, it should be appreciated that it may not always be complete and up to date. The mariner must be the final judge of the reliance to be placed on the information given, bearing in mind their particular circumstances, local pilotage guidance and the judicious use of available navigational aids.

**Charts.** Charts should be used with prudence: there are areas where the source data are old, incomplete or of poor quality. The mariner should use the largest scale appropriate for his particular purpose; apart from being the most detailed, the larger scales are usually corrected first. When extensive new information (such as a new hydrographic survey) is received, some months may elapse before it can be fully incorporated in published charts. On small scale charts of ocean areas where hydrographic information is, in many cases, still sparse, charted shoals may be in error as regards position, least depth and extent. Undiscovered dangers may exist, particularly away from well-established routes.

**Further guidance.** The Mariner's Handbook (NP 100) gives a fuller explanation of the limitations of charts. All users should study it in their own interest.

**ENC/ECDIS Data Presentation and Performance Check in Ships.** The International Maritime Organization (IMO) has recently indicated its concerns about operating anomalies identified in some ECDIS that fail to display important new chart features.

The International Hydrographic Organization (IHO) has produced an ENC Data Presentation and Performance Check dataset that allows mariners to check their ECDIS. The check dataset is available through ENC service providers and from the IHO website ([www.iho.int](http://www.iho.int)) which includes instructions.

Mariners are strongly recommended to use the dataset and report the results of their checks to help the IHO identify how the different brands of ECDIS display and handle chart information. Mariners are asked to also inform the IMO, national Hydrographic Offices, ECDIS manufacturers and others, so that they can take any corrective action that may be necessary.

In order to present the most comprehensive report possible to the IMO and to further assist in resolving the issues so far identified, the IHO is keen that as many ships as possible forward their results. Reports on the results can be sent via a form provided with the data or the results can be submitted on-line through a web-form.

All relevant documentation can be downloaded free from the IHO website at: [www.iho.int](http://www.iho.int).

II

**NUMERICAL INDEX OF CHARTS AFFECTED**  
*(NZ NTM Edition No. 12 dated 12 June 2015)*

NZ Chart No.	INT Chart No.	ENC No.	Notice to Mariners
NZ 23 NZ 45 NZ 48 NZ 52 NZ 53 NZ 61 NZ 522 NZ 614 NZ 5314 NZ 5324 NZ 5411 NZ 6144 NZ 7142	INT 640	      NZ300614 NZ505314  NZ405411 NZ406144 NZ407142 NZ505316 NZ507142	128 130 130 128 128 133(T) 128 133(T) 131(P) 129 132(P) 133(T) 134(T) 127 134(T)

## NEW ZEALAND TEMPORARY AND PRELIMINARY NOTICES IN FORCE

(NZ NTM Edition No. 12 dated 12 June 2015)

NZ Notice	T/P	Charts Affected	Locality and Subject
		NZ Chart, ENC Cell	
242/09	P	<b>NZ 42, NZ 4265</b>	Kaipara Hr. Entrance: Depths
222/10	P	<b>NZ 542</b>	Whakatane: Depths
202/11	P	<b>NZ 6142, NZ606142</b>	Port Nelson: Light, Beacon, Works in Progress
211/12	P	<b>NZ 61, NZ 614, NZ300061, NZ300614, NZ506141</b>	North Coast, Golden Bay & Tasman Bay: Lights
147/13	P	<b>NZ 521, NZ300521</b>	East Coast, Poor Knights Islands: Depths
156/13	P	<b>NZ 541, NZ 5413, NZ300541, NZ405413</b>	East Coast, Tauranga, Motiti Island: Depths
169/13	P	<b>NZ 5411, NZ405411</b>	East Coast, Tauranga Harbour, Katikati Entrance: Buoy
172/13	P	<b>NZ 6152</b>	North Coast, Havelock: Lights, Beacons
194/13	P	<b>NZ 5124</b>	East Coast, Bay of Islands, Kerikeri Inlet: Light Beacons
221/13	P	<b>NZ 4265</b>	West Coast, Kaipara Harbour: Lights, Beacons, Buoys
41/14	P	<b>NZ 268</b>	Chatham Islands: Depths and Rocks
42/14	P	<b>NZ 26, NZ 27, NZ 268</b>	Chatham Islands: Areas to be avoided
45/14	P	<b>NZ 632, NZ 6324, NZ406324</b>	East Coast, Akaroa Harbour: Area of Restricted Access
132/14	T	<b>NZ 6321, NZ506321, NZ606321</b>	East Coast, Lyttelton Harbour: Light, Beacon
139/14	P	<b>NZ 5612</b>	East Coast, Approaches to Napier: Light Sectors
141/14	T	<b>NZ 23 (INT 640), NZ 25 (INT 648), NZ 45, NZ 48, NZ200023, NZ300045</b>	West Coast, South Taranaki Bight: Seabed Obstructions
156/14	P	<b>NZ 82 (T 82), NZ 8238 (T 8238), NZ 8247 (T 8247), NZ 8248 (T 8248), NZ8259 (T 8259), NZ300082, NZ508238, NZ608238</b>	Kingdom of Tonga, Ha'apai Group: Navigation Aids
171/14	P	<b>NZ 521, NZ300521</b>	East Coast, Whangarei Harbour: Directional light
210/14	P	<b>NZ 8215, NZ508215</b>	Kingdom of Tonga, Niuatoputapu: Navigation Aids
211/14	P	<b>NZ 82 (T 82), NZ 827 (T 827), NZ 8275 (T 8275), NZ 8277 (T 8277), NZ300827, NZ408275, NZ508277</b>	Kingdom of Tonga, Tongatapu: Navigation Aids
213/14	T	<b>NZ 8655, NZ508655</b>	Samoa, Approaches to Apia Harbour: Buoys
224/14	P	<b>NZ 6422, NZ406422, NZ506422</b>	East Coast; Timaru Harbour: Works, Exclusion Zone and Buoy
238/14	P	<b>NZ 822 (T 822), NZ 8225 (T 8225), NZ400822, NZ508225</b>	Kingdom of Tonga, Vava'u Group, Neiafu Harbour: Prohibited Area
245/14	P	<b>NZ 531, NZ 534, NZ 5318, NZ300531</b>	East Coast, Mercury Islands, Mercury Bay: Depths, Rocks
251/14	T	<b>NZ 54, NZ 541, NZ 542, NZ 5413, NZ300541, NZ405413</b>	East Coast, Tauranga, Astrolabe Reef: Exclusion Zone and Waverider Buoy
261/14	T	<b>NZ 522, NZ 532, NZ 5227, NZ305322</b>	East Coast, Kawau Bay, Matakana River: Works in Progress
263/14	P	<b>NZ 62, NZ 63, NZ 6212, NZ300062, NZ462122</b>	East Coast, Kaikoura: Marine Reserve
264/14	P	<b>NZ 63, NZ 64, NZ 632, NZ 6324, NZ300063, NZ406324</b>	East Coast, Banks Peninsula, Akaroa Harbour: Marine Reserve
275/14	P	<b>NZ 8655, NZ508655</b>	Samoa, Apia Harbour: Buoys and Breakwater
24/15	P	<b>NZ 82 (T 82), NZ 822 (T 822), NZ 8225 (T 8225), NZ300082, NZ400822, NZ508225</b>	Kingdom of Tonga, Vava'u Group: Navigation Aids
29/15	T	<b>NZ 632, NZ 6321, NZ400632, NZ506321, NZ606321</b>	East Coast, Lyttelton Harbour, Sticking Point Eastwards: Exclusion Zone
51/15	T	<b>NZ 14638 (INT 638)</b>	Fiji, Viti Levu, Vanua Levu & Southern Lau Group: Lights
59/15	T	<b>NZ 14065 (INT 65), NZ 14900 (INT 900), NZ14065E, NZ21490E</b>	Ross Sea, Terra Nova Bay, Gerlache Inlet: Scientific Instrument
68/15	T	<b>NZ 45, NZ 48, NZ 4541, NZ300045</b>	West Coast, Wanganui, South Mole Head: Light Unlit
71/15	T	<b>NZ 4314, NZ404314</b>	West Coast, Manukau Harbour Entrance: Depths
73/15	P	<b>NZ 614, NZ 615, NZ 6151, NZ 6152, NZ 6153, NZ 6154, NZ300614, NZ300615, NZ461531, NZ461532, NZ561541, NZ561542, NZ661542</b>	Marlborough Sounds: Use of Automated Navigation Systems
96/15	T		Maritime Safety Broadcasts
97/15	P	<b>NZ 5113</b>	East Coast, Houhora & Rangaunu Harbour: Aids to Navigation
98/15	T	<b>NZ 23 (INT 640), NZ 26, NZ 55, NZ 56, NZ 14600 (INT 600), NZ200023, NZ300055, NZ300056, NZ14600E</b>	East Coast, Poverty Bay, Eastwards: Scientific Instruments
99/15	T	<b>NZ 23 (INT 640), NZ 26, NZ 58, NZ 14600 (INT 600), NZ200023, NZ300058, NZ14600E</b>	East Coast, Honeycomb Southeastwards: Scientific Instruments
107/15	T	<b>NZ 5612, NZ505612, NZ605612</b>	East Coast, Napier: Dredging
119/15	P	<b>NZ 541, NZ 5411, NZ 5413, NZ300541, NZ405411, NZ405413</b>	East Coast, Tauranga, Port of Tauranga: Works
122/15	T	<b>NZ 23 (INT 640), NZ 25 (INT 648), NZ 45, NZ 48,</b>	West Coast, South Taranaki Bight: Drilling

II

NZ Notice	T/P	Charts Affected	Locality and Subject
		NZ Chart, ENC Cell	
124/15	T	<b>NZ200023, NZ300045 NZ 66, NZ 661, NZ 6612, NZ300661, NZ506612</b>	Operations East Coast, Approaches to Otago Harbour: Scientific Instruments
125/15	T	<b>NZ 4633, NZ404633</b>	South Coast, Wellington, Lyall Bay, Lit Buoy Removed
131/15	P	<b>NZ 5314, NZ505314</b>	East Coast, Mercury Islands, Red Mercury Islands (Whakau) Northeastwards: Rocks
132/15	P	<b>NZ 5411, NZ405411</b>	East Coast, Tauranga: Lights
134/15	T	<b>NZ 7142, NZ407142, NZ507142</b>	West Coast, Greymouth Harbour: Depths

**NZ 126/15 NEW ZEALAND PUBLICATIONS – Raster Navigational Charts (RNCs).**

From 12 June 2015, the NZ*Mariner* BSB cumulative update file for May 2015 will be available from the LINZ website [www.linz.govt.nz/hydro/nzmariner](http://www.linz.govt.nz/hydro/nzmariner).

NZ*Mariner* Raster Navigational Charts (RNCs) can be used only in conjunction with compatible viewing software called Electronic Charting Systems (ECS).

For compliance with New Zealand legal requirements for nautical charts and publications please refer to Maritime Rules Part 25, as supported by Maritime New Zealand Marine Guidance Notice 8 'Use of Electronic Charts, ECDIS and ENC's in New Zealand' available from the Maritime New Zealand website [www.maritimenz.govt.nz/Commercial/Shipping-safety/Safety-updates/Guidance-notices.asp](http://www.maritimenz.govt.nz/Commercial/Shipping-safety/Safety-updates/Guidance-notices.asp).

Further details are included in the Annual New Zealand Notices to Mariners, No.1 which can be found in the New Zealand Nautical Almanac (NZ 204) and on the LINZ website [www.linz.govt.nz](http://www.linz.govt.nz).

New Zealand Hydrographic Authority  
NI 131/2015

**NZ 127/15 NEW ZEALAND PUBLICATIONS – Electronic Navigational Charts.**

**New ENC to be Published Shortly.**

*ENC Cell Title*

**NZ505316** NZ505316 - NZ5316 - North Island – East Coast – Whitianga Harbour.

New Zealand Hydrographic Authority  
NI 130/2015



**NZ 128/15 NEW ZEALAND – North Island – East Coast – Great Barrier Island North and Westwards – Scientific Instruments.**

**Chart NZ 23 (INT 640) [ 66/13 ]**

Insert	○ 2 ODAS	34° 49'.5S., 175° 45'.4E.
	○ 2 ODAS	35° 14'.2S., 175° 30'.7E.
	○ ODAS	35° 32'.1S., 175° 18'.7E.
	○ 2 ODAS	35° 48'.6S., 175° 09'.1E.

**Chart NZ 52 [ 116/15 ]**

Insert	○ ODAS	35° 13'.71S., 175° 30'.10E.
	○ ODAS	35° 14'.69S., 175° 31'.23E.
	○ ODAS	35° 32'.15S., 175° 18'.73E.
	○ 2 ODAS	35° 48'.58S., 175° 09'.07E.
	○ ODAS	36° 10'.86S., 174° 54'.80E.

**Chart NZ 53 [ 116/15 ]**

	○ ODAS	36° 10'.86S., 174° 54'.80E.
--	--------	-----------------------------

**Chart NZ 522 [ 116/15 ]**

	○ ODAS	36° 10'.86S., 174° 54'.80E.
--	--------	-----------------------------

Note: No Tracings are included for this notice.

NIWA  
NI 125/2015

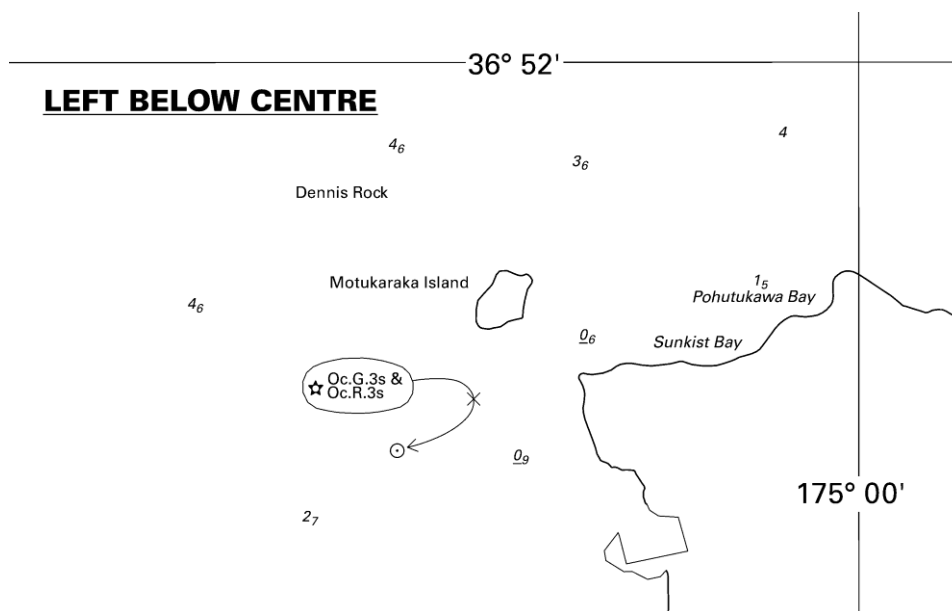
NZ 129/15 NEW ZEALAND – North Island – East Coast – Auckland – Tamaki Strait – Lights.

Chart NZ 5324 [ 87/15 ]

Insert ★ Oc.G.3s & Oc.R.3s

36° 53'.11S., 174° 58'.36E.

Pine Harbour Holdings Ltd.  
NZ Light List: 3850.101, 3850.102  
NI 114/2015



<i>Issued as a guide to chart correction.</i>		<i>Use in conjunction with the appropriate NZ Notice to Mariners.</i>	
<b>LAST CORRECTION</b>	<b>NZ NTM No.</b>	<b>CHART No.</b>	
<b>NZ 87/15</b>	<b>NZ 129/15</b>	<b>NZ 5324</b>	

**NZ 130/15      NEW ZEALAND – North Island – West Coast – Cape Egmont Westwards – Protected Area.**

*Former notice – NZ 22(P)/15 is cancelled.*

**Chart NZ 45 [ 247/14 ]**

Insert            the accompanying block showing amendments to Safety Zone & Protected Area, centered on:            39° 24'.43S., 173° 13'.87E.

**Chart NZ 48 [ 77/14 ]**

Insert            the accompanying block showing amendments to Safety Zone & Protected Area, centered on:            39° 26'.41S., 173° 16'.23E.

AWE Limited  
NI 120/2015

**NZ 131(P)/15 NEW ZEALAND – North Island – East Coast – Mercury Islands – Red Mercury Island  
(Whakau) Northeastwards – Rocks.**

1. The following rocks, covers and uncovers, are reported in the following approximate positions:

36° 37'.15S., 175° 56'.85E.  
36° 37'.26S., 175° 56'.84E.

2. Mariners are advised to exercise caution when navigating in the area.
3. Charting action will take place in due course.

**Charts affected: NZ 5314, NZ505314**

New Zealand Hydrographic Authority  
NI 139/2015

**NZ 132(P)/15 NEW ZEALAND – North Island – East Coast – Tauranga – Lights.**

*Former notice – NZ 121(P)/15 is cancelled.*

1. Lights have been established on the following beacons:

	Western 'E'	Fl.R.3s	37° 37'.27S., 176° 03'.18E.	Port lateral mark, red can topmark
*	OP	Fl.G.3s	37° 38'.00S., 176° 03'.32E.	Starboard lateral mark, green cone topmark
*	Motuhoa	Fl.G.3s	37° 37'.93S., 176° 04'.46E.	Starboard lateral mark, green cone topmark

2. Charting action will take place in due course.

*\* Indicates new or revised entry*

**Chart affected: NZ 5411, NZ405411**

Bay of Plenty Regional Council  
NI 133/2015

**NZ 133(T)/15 NEW ZEALAND – South Island – North Coast – Tasman Bay and Golden Bay – Seasonal  
Spat Catching Areas Removed.**

*Former notice* – NZ 101(T)/15 is cancelled.

Cancel this notice on receipt.

**Charts formerly affected: NZ 61, NZ 614, NZ 6144, NZ300614, NZ406144**

Tasman Bay Ring Road Spat Catching Ltd & Golden Bay Ring Road Spat Catching Ltd.  
NI 129/2015

**NZ 134(T)/15 NEW ZEALAND – South Island – West Coast – Greymouth Harbour – Depths.**

*Former notice – NZ 90(T)/15 is cancelled.*

- \* 1. A recent survey (29 May 2015) indicates the following depths below CD on the bar at the Grey River entrance:
- |                      |      |                               |
|----------------------|------|-------------------------------|
| North Transit Lead   | 2.7m | 42° 26'.343S., 171° 11'.429E. |
| Central Transit Lead | 3.0m | 42° 26'.354S., 171° 11'.416E. |
| South Transit Lead   | 3.6m | 42° 26'.362S., 171° 11'.404E. |
2. Mariners should be aware that depths in Greymouth Harbour entrance are constantly changing and should contact the Harbourmaster for the latest conditions on (027) 435 3424 or (03) 768 5666 or Greymouth Harbour Radio Ch14.

\* *Indicates new or revised entry*

**Charts temporarily affected: NZ 7142, NZ407142, NZ507142**

Port of Greymouth  
NI 132/2015

### III

#### CORRECTIONS TO NEW ZEALAND LIGHT LIST (NZ NTM Edition No. 12 dated 12 June 2015)

#### NEW ZEALAND NAUTICAL ALMANAC 2014/15 LIGHT LIST SECTION

3850.101	-- No. 3A	36 53.12 174 58.36	Oc G 3s	2	2	Green $\triangle$ on wooden pile beacon	ec 0.5
*	*	*	*	*	*	*	*
3850.102	-- No. 4A	36 53.11 174 58.36	Oc R 3s	2	2	Red $\square$ on wooden pile beacon	ec 0.5
*	*	*	*	*	*	*	*

---

(NI 114/2015)

### IV

#### CORRECTIONS TO SAILING DIRECTIONS AND NEW ZEALAND PUBLICATIONS (NZ NTM Edition No. 12 dated 12 June 2015)

#### NP13 Australia Pilot Volume 1 (2014 Edition)

#### Northern Territory – Port Darwin — Anchorages

158

Paragraph 4.101 and heading *Replace by*:

#### Anchorages

#### 4.101

#### 1 Outer anchorages:

Anchorages A1 to A14, centred on position 12°19'30S 130°43'65E, close ENE of the outer pilot boarding position (4.103).

Anchorages B1 to B7, centred on position 12°22'90S 130°45'47E, close N of the inner pilot boarding position (4.103).

**Caution.** A historic wreck, marked by a light buoy, lies close N of anchorage B6, in position 12°23'38S 130°46'28E.

#### 2 Inner anchorages:

Anchorages C1 to C9 lie to the ESE and E of anchorage C1 (12°28'90S 130°49'42E), which lies 2.6 miles NW of Wickham Point (4.107).

Anchorages D1 to D3, centred on position 12°28'25S 130°50'10E, SE of Bennett Shoal (4.115).

Anchorages E1 to E3, centred on position 12°29'50S 130°48'63E, close E of Weed Reef (4.129).

Australian Chart 26  
(SDD 2015000 105418)

[22/15]



**Western Australia – Dirk Hartog Island –  
Cape Inscription — Light**

**271**

*After Paragraph 7.47 1 line 4 Insert:*

Cape Inscription Light (grey concrete tower, white cupola, 15 m in height) (25°28'91S 112°58'31E).

*Paragraph 7.48 2 lines 5-9 Replace by:*

To a position NW of Cape Inscription, the N extremity of Dirk Hartog Island.

Australian Notice 09/527/2015  
(SDD 2015000 100515)

[22/15]

**Fremantle — Approach channels**

**296**

*Paragraph 8.11 1 line 4 For 14.9 m Read 14.7 m.*

Australian Chart Aus 113  
(SDD 2015000104104)

[22/15]

**NP14 Australia Pilot Volume 2 (2013 Edition)**

**Tasmania – King Island — Light**

**62**

*Paragraph 2.48 6 lines 1-6 Replace by:*

- 1* The track continues to a position SE of Cumberland (39°58'59S 144°07'57E). Between Cumberland and Bold Head, Cumberland and Fraser Bluff (39°55'97S 144°08'22E), the coast is indented and almost steep-to.

Australian Notice 09/535/2015  
(SDD 2015000 100515)

[22/15]

**South Australia – Victoria – Ninety Mile Beach —  
Radio Mast**

**171**

*Paragraph 6.87 1 lines 2-3 Delete*

Australian Notice 09/533/2015  
(SDD 2015000 100515)

[22/15]

**NP13 Australia Pilot Volume 1 (2014 Edition)**

**Beagle Gulf – Port Darwin —  
Wickham Point LNG berth**

161

Paragraph 4.127 *1* lines 9-10 *Replace by:*

Depth alongside (2015) the T-head was 14.2 m with a least depth of 12.7 m in the turning basin.

Australian Chart AUS 27  
(SDD 2015000 105344) [23/15]

**NP15 Australia Pilot Volume 3 (2012 Edition)**

**Queensland – Thursday Island — Leading Lights**

432

Paragraph 13.119 *1* lines 1-11 *Replace by:*

- 1* From a position SSE of Quoin Point the track leads E, in the white sector (093.8°-094.7°) of Thursday Island Directional Light (10°34'·70S 142°12'·47E), which stands between two hillocks known as Alpin Hills. The route passes (with positions relative to Kate Point (10°34'·50S 142°11'·70E)):

Queensland Notice 155/15  
(SDD 2015000 110855) [24/15]

## V

### NAVIGATIONAL WARNINGS

*Warnings in force 10 June 2015*

#### NAVAREA XIV (South West Pacific)

NIL IN FORCE

### NZ Coastal Navigational Warnings (Area Z)

92/15 FM: RCC NEW ZEALAND 170010 UTC MAY 15  
COASTAL NAVIGATION WARNING 92/15  
AREA RAGLAN AND TASMAN SEA  
1. SURVEY IN PROGRESS BY RV GEO RESOLUTION V7IE2 ACROSS THE TASMAN SEA FROM 37-43S 174-33E TO NARRABEEN AUSTRALIA 33-43S 151-18E. A 1.0 NAUTICAL MILE CLEARANCE IS REQUESTED.  
2. A NAVAREA X WARNING WILL BE ISSUED ONCE OPERATIONS LEAVE THE NEW ZEALAND COASTAL WARNING AREA.

---

## VI

### CORRECTIONS TO ADMIRALTY LIST OF RADIO SIGNALS

*(NZ NTM Edition No. 12 dated 12 June 2015)*

## VI

### VOLUME 2, NP282, 2015/16

Published Wk 9/15

(Last Updates: Weekly Edition No. 22 dated 28 May 2015)

### AUTOMATIC IDENTIFICATION SYSTEM (AIS)

**PAGE 146, AUSTRALIA, below Goods Island Rear Ldg Lt.**

Insert:

Hay Point V.04	21°15'33S 149°23'18E	995031021		Virtual	
Hay Point V.07	21°15'96S 149°19'70E	995036068		Virtual	
Hay Point V.08	21°16'22S 149°19'78E	995036069		Virtual	
Hay Point V.R	21°15'61S 149°19'54E	995036067		Virtual	

Maritime Safety Queensland Notice 139/15 (RSDRA2015000101597) 23/15

**HYDROGRAPHIC NOTE**

(For instructions, see next page)

New Zealand Hydrographic Authority  
Land Information New Zealand  
Radio New Zealand House  
155 The Terrace  
PO Box 5501  
Wellington 6145  
New Zealand

Tel: 0800 665 463 or +64 (0)4 460 0110  
Fax: +64 (0)4 460 0161  
Email: [ntm@linz.govt.nz](mailto:ntm@linz.govt.nz)

Date ..... Ref. No. ....

Name and address of ship or sender  
.....  
.....

Tel/Fax/Telex/Email of sender .....

General locality .....

Subject .....

Position. Lat. .... Long.....

Position fixing system used .....

Datum .....

Paper Chart/ENC affected ..... Edition.....

Dated .....

Latest Notice to Mariners held.....

Publications affected (Edition No. and date of latest supplement, page no., ID no. etc) .....

Details:

A replacement copy of Chart No. ....  
is required (see Instruction 4).

Signature of observer/reporter.....

# HYDROGRAPHIC NOTE

## Forwarding Information for Charts and Hydrographic Publications

**Note:** An acknowledgement of receipt will be sent and the information then used to the best advantage, which may mean immediate action or inclusion in a revision in due course. When a Notices to Mariners is issued, the sender's ship or name is quoted as authority unless (as sometimes happens) the information is also received in a foreign Notices to Mariners. An explanation of the use of contributions from all parts of the world would be too greater task and a further communication should only be expected when the information is of outstanding value or has unusual features.

### INSTRUCTIONS:

1. Mariners are requested to notify New Zealand Hydrographic Authority, Land Information New Zealand, 155 The Terrace, PO Box 5501, Wellington 6145, New Zealand, when new or suspected dangers to navigation are discovered, changes observed in aids to navigation, or corrections to publications seem to be necessary. The Admiralty publication, *The Mariner's Handbook* (NP 100), Chapter 4, gives general instructions.
2. This form and its instructions have been designed to help both the sender and the recipient. It should be used, or followed, closely, whenever appropriate. Copies of this form may be obtained gratis from the New Zealand Hydrographic Authority at the address above, or in PDF format directly from the LINZ website, [www.linz.govt.nz/hydro](http://www.linz.govt.nz/hydro). Hydrographic Notes can also be sent from mobile devices using the Hydrographic Notes Application available for [Android](#) and [Apple](#) devices.
3. When a position is defined by sextant angles or bearings (true or magnetic being specified) more than two should be used in order to provide a check. Distances observed by radar should be quoted. However, when there is a series of fixes along a ship's course, only the method of fixing and the objects used need to be indicated. Latitude and longitude should only be used specifically to position the details when they have been fixed by astronomical observations or GPS and a full description of the method, equipment and datum used should be given.
4. Paper Charts: A cutting from the largest scale paper chart is the best medium for forwarding details, the alterations and additions being shown thereon in red. When requested, a new copy will be sent in replacement of a chart that has been used to forward information, or when extensive observations have involved defacement of the observer's chart. If it is preferred to show the amendments on a tracing of the largest scale chart (rather than the chart itself) these should be in red as above, but adequate detail from the chart must be traced in black ink to enable the amendments to be fitted correctly.

Electronic Navigational Charts (ENCs): A screen dump of the largest scale usage band ENC with the alterations and additions being shown thereon in red.

5. When soundings are obtained, *The Mariners Handbook* (NP 100) should be consulted. The echo sounding trace should be marked with times, depths, etc., and forwarded with the report. It is important to state whether the echo sounder is set to register depths below the surface, or below the keel; in the latter case the vessel's draught should be given. Time and date should be given in order that corrections for the height of the tide may be made where necessary. The make, name, and type of echo sounder set should also be given.
6. Modern echo sounders frequently record greater depths than the set's nominal range, e.g. with a set whose maximum is 500m a trace appearing at 50m may in fact be 550m or even 1,050m. Erroneous deep soundings beyond the sets nominal range can usually be recognised by the following:
  - (a) The trace being weaker than normal for the depth registered
  - (b) The trace appearing to pass through the transmission line
  - (c) The "feathery" nature of the trace.
7. Reports which cannot be confirmed or are lacking in certain details should not be withheld. Shortcomings should be stressed and any firm expectation of being able to check the information on a succeeding voyage should be mentioned.
8. Reports of shoal soundings, uncharted dangers and navigational aids out of order should, at the mariner's discretion, also be made by radio to the nearest coast radio station. The draught of modern tankers is such that any uncharted depth under 30 metres or 15 fathoms may be of sufficient importance to justify a radio message.

To accompany New Zealand Notice to Mariners No. 130/15

NZ 45

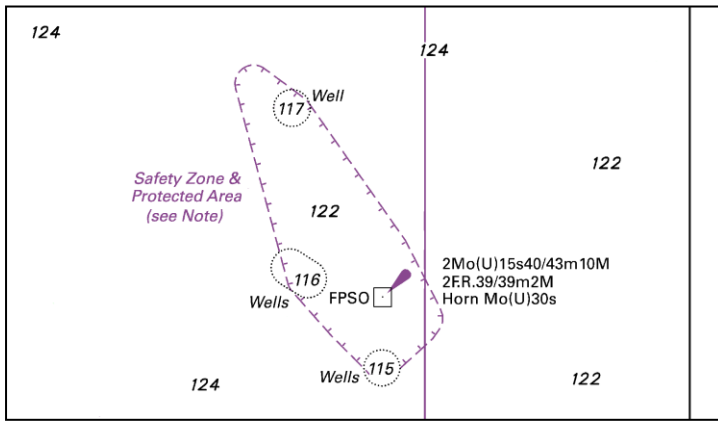


Image size (mm) 95 x 54

To accompany New Zealand Notice to Mariners No. 130/15

NZ 48

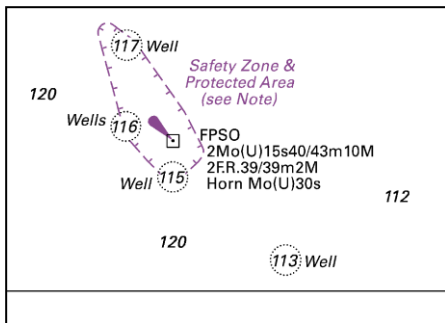


Image size (mm) 58 x 42