


**NZ 113/13 ANTARCTICA – Ross Sea – Adare Peninsula – Reported Shoal.**

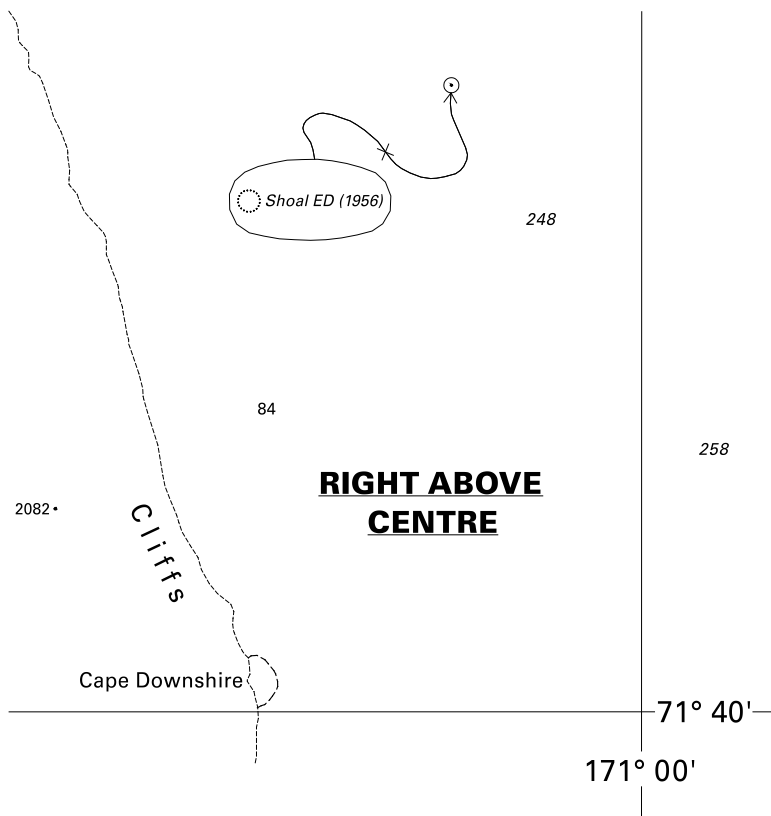
**Chart NZ 14908 (INT 9008) [ NE Aug 06 ]**

Insert  Shoal ED (1956) 71° 30'.99S., 170° 51'.03E.

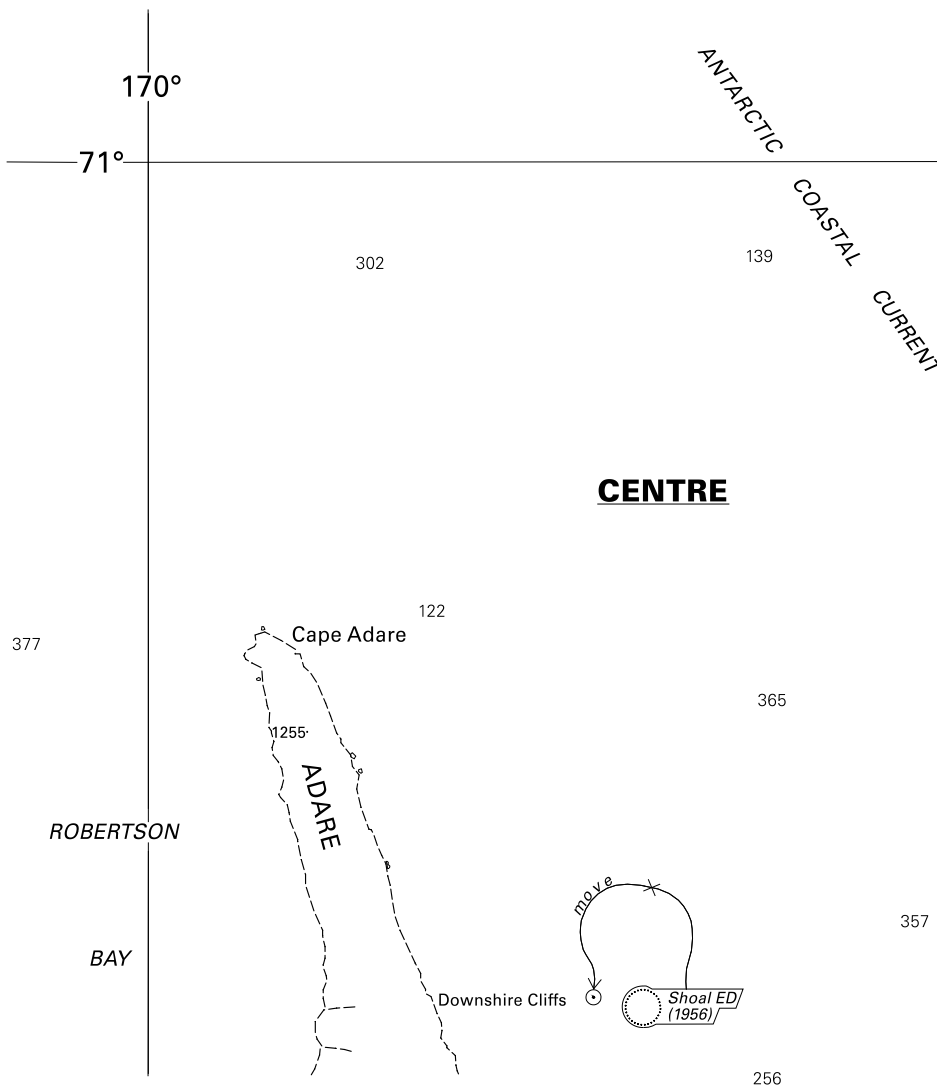
**Chart NZ 14909 (INT 9009) [ 233/11 ]**

Move  Shoal ED (1956), from:  
to: 71° 31'.2S., 170° 57'.0E.  
71° 30'.9S., 170° 51'.0E.

New Zealand Hydrographic Authority  
NI 113/2013



<i>Issued as a guide to chart correction.</i>		<i>Use in conjunction with the appropriate NZ Notice to Mariners.</i>	
<b>LAST CORRECTION</b>	<b>NZ NTM No.</b>	<b>CHART No.</b>	
<b>NE Aug 06</b>	<b>NZ 113/13</b>	<b>NZ 14908 (INT 9008)</b>	



<i>Issued as a guide to chart correction.</i>		<i>Use in conjunction with the appropriate NZ Notice to Mariners.</i>
<b>LAST CORRECTION</b>	<b>NZ NTM No.</b>	<b>CHART No.</b>
<b>233/11</b>	<b>NZ 113/13</b>	<b>NZ 14909 (INT 9009)</b>