

NZ 136/17 NEW ZEALAND – North Island – East Coast – Marsden Point. Depths, Dredged Area and Anchorages.

1. Former notices – NZ 98(T)/17 and NZ 111(P)/17 are cancelled.

2. **Chart NZ 5219 [192/16]**

Insert	the accompanying block showing amendments to anchorage areas, centered on:	35° 52'.90S., 174° 35'.22E.
	the accompanying block showing amendments to anchorage areas, centered on:	35° 56'.90S., 174° 33'.61E.

3. **Chart NZ 5214 [192/16]**

Insert	the accompanying block showing amendments to dredged areas and depths, centered on:	35° 49'.86S., 174° 29'.75E.
	the accompanying block showing amendments to anchorages, centered on:	35° 52'.88S., 174° 35'.27E.
Delete	Chart note 'DREDGED AREAS'	Below chart title

4. **Chart NZ 5215 [89/17]**

Insert	the accompanying block showing amendments to dredged areas and depths, centered on:	35° 49'.81S., 174° 29'.66E.
Delete	Chart note 'DREDGED AREAS'	Below chart title

NZ Light List: 3719

Northport Ltd.
HITS 5214/147

Note: No tracings are included for this notice.

NZ 5214

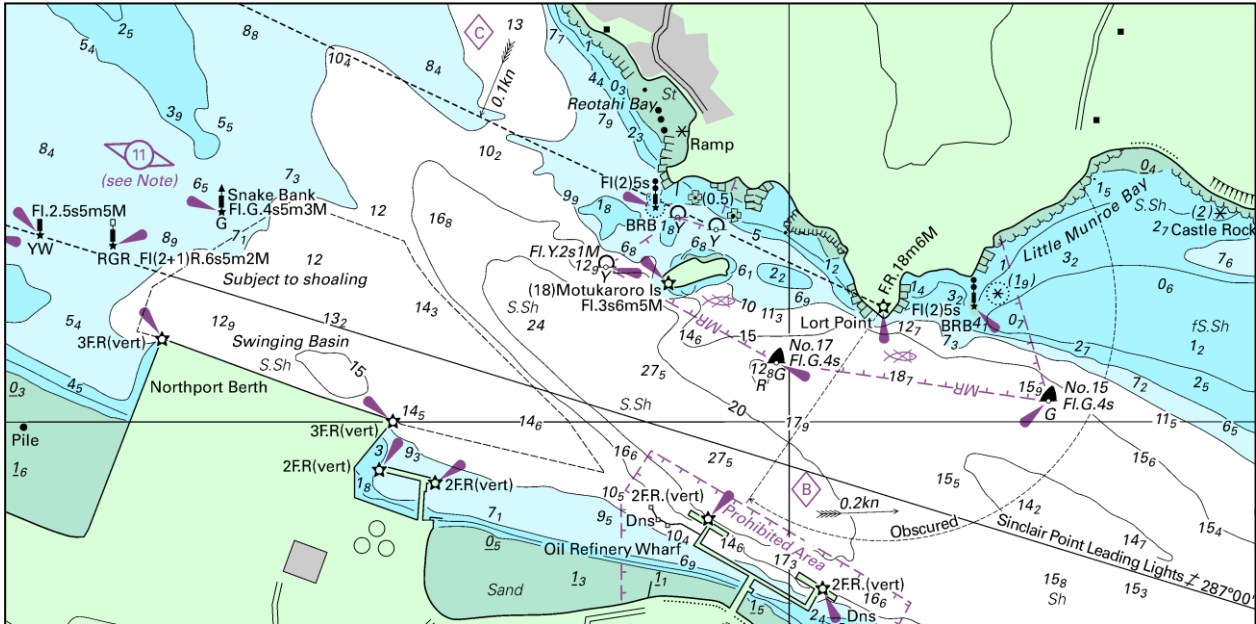


Image Size (mm) 165 x 82

NZ5214

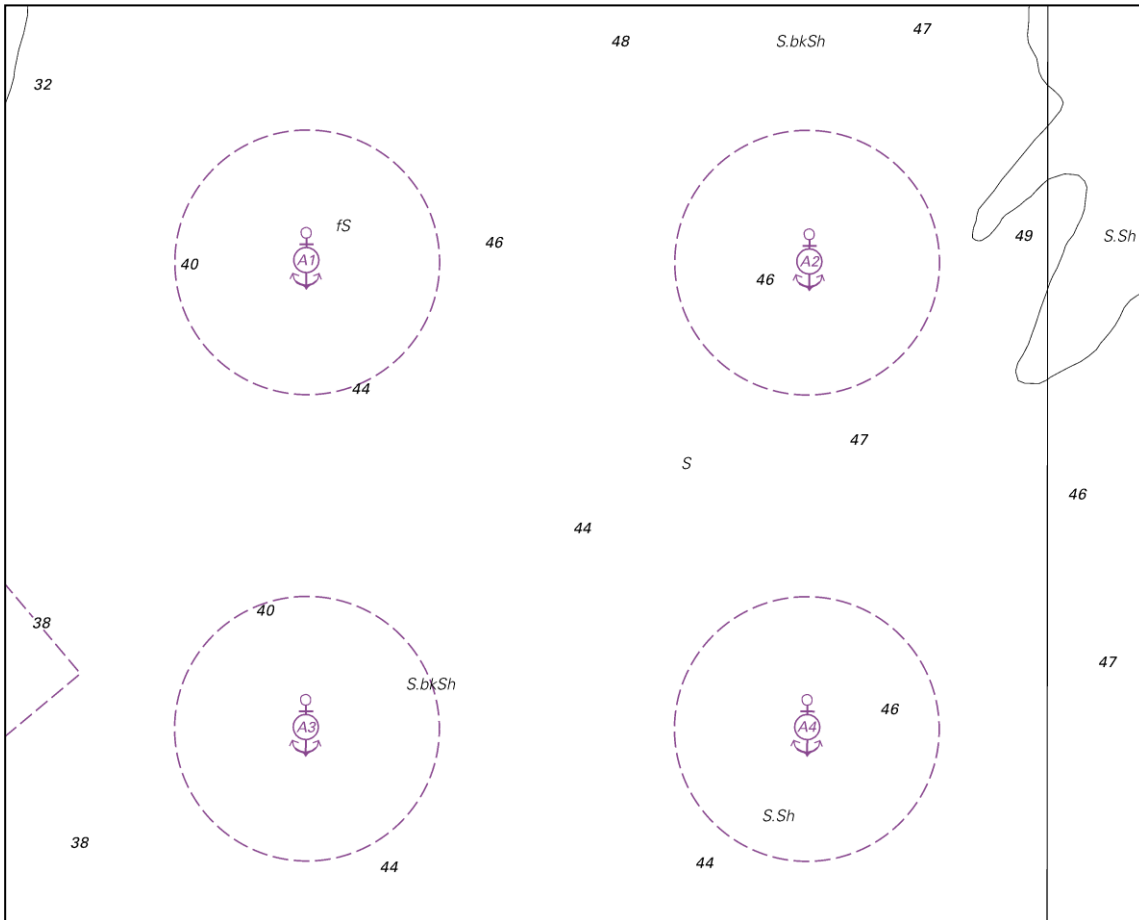


Image Size (mm) 151 x 122

NZ 5215

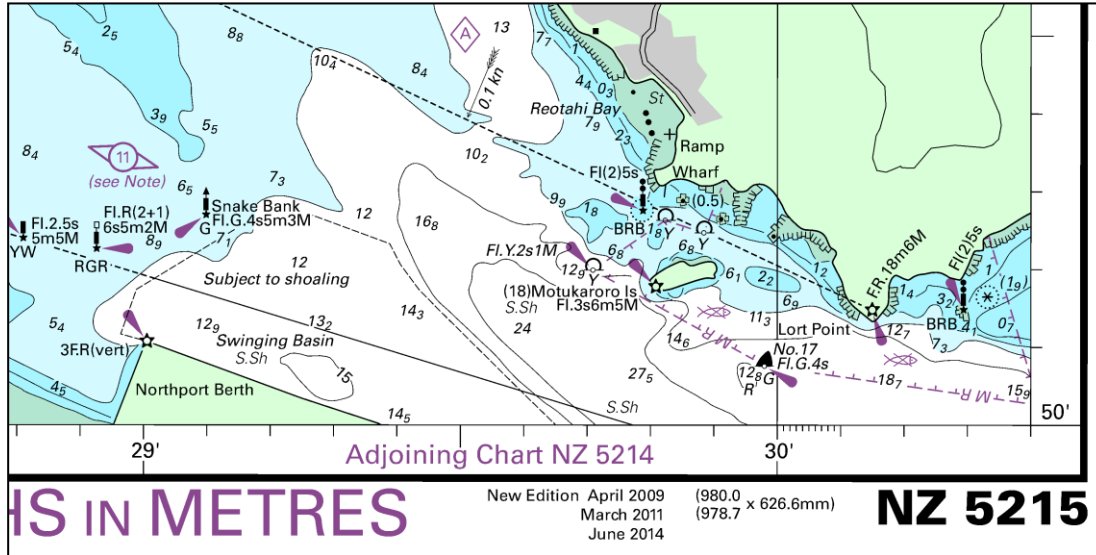


Image Size (mm) 146 x 74

NZ 5219

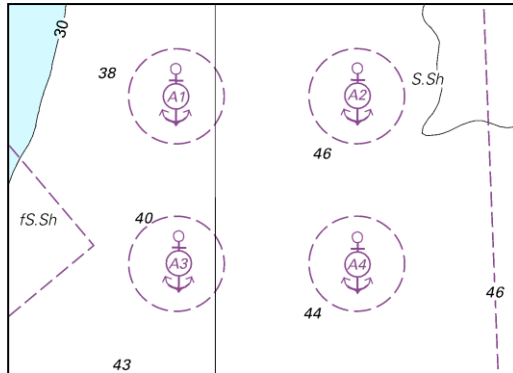


Image Size (mm) 68 x 49

NZ 5219

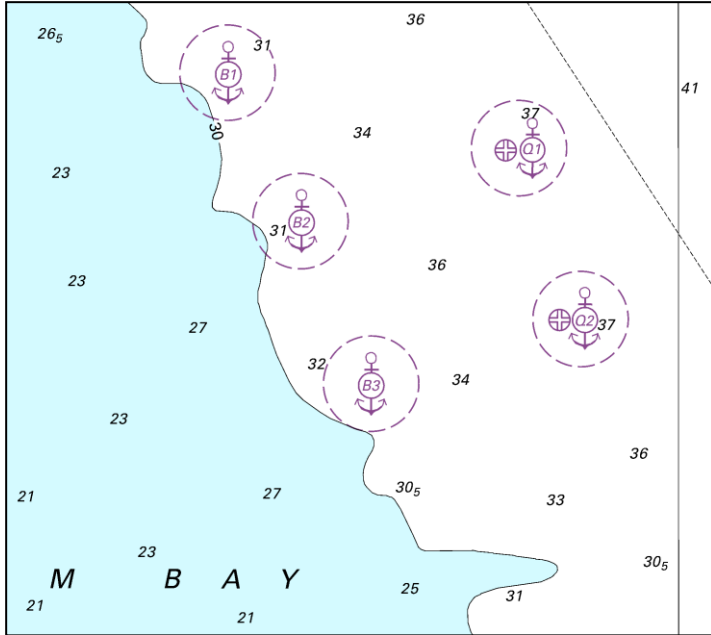


Image Size (mm) 94 x 84