

NZ 148/17 NEW ZEALAND – North Island – West Coast – Manukau Harbour – Wairopa Channel and Onehunga Wharf. Lit Buoys, Depths, Shoal Areas & Offshore Foul Grounds

1. Former notice – NZ 178(T)/16 is cancelled.






2. Chart NZ 42 [101/16]

Insert	#	37° 08'.88S., 174° 33'.84E.
	#	37° 08'.94S., 174° 33'.12E.
	#	37° 09'.66S., 174° 28'.98E.
	#	37° 09'.90S., 174° 27'.54E.
	#	37° 10'.14S., 174° 26'.16E.
	#	37° 10'.38S., 174° 24'.78E.
	#	37° 10'.62S., 174° 23'.40E.
	#	37° 10'.86S., 174° 21'.96E.
	#	37° 11'.10S., 174° 20'.58E.

3. Chart NZ 43 [70/17]

Insert	#	37° 08'.88S., 174° 33'.84E.
	#	37° 08'.94S., 174° 33'.12E.
	#	37° 09'.66S., 174° 28'.98E.
	#	37° 09'.90S., 174° 27'.54E.
	#	37° 10'.14S., 174° 26'.16E.
	#	37° 10'.38S., 174° 24'.78E.
	#	37° 10'.62S., 174° 23'.40E.
	#	37° 10'.86S., 174° 21'.96E.
	#	37° 11'.10S., 174° 20'.58E.

4. Chart NZ 4314 [183/14]

Insert	#	37° 08'.88S., 174° 33'.84E.
	#	37° 08'.94S., 174° 33'.12E.
	#	37° 09'.66S., 174° 28'.98E.
	#	37° 09'.89S., 174° 27'.54E.
Replace	 No.1 Q(2)G.3s with  No.1 Q(2)G.3s G	37° 00'.93S., 174° 36'.77E.
	 Spit Fl.G.3s with  Spit Fl.G.3s G	37° 01'.12S., 174° 36'.98E.
Delete	 Fl(2)R.6s R	37° 02'.11S., 174° 34'.11E.

5. Chart NZ 4315 (Plan, Onehunga Wharf) [100/14]

Insert	the accompanying block showing amendments to depths, contours and aid to navigation, centred on:	36° 56'.033S., 174° 46'.966E.
--------	--	-------------------------------

(continued)

NZ 148/17 NEW ZEALAND – North Island – West Coast – Manukau Harbour – Wairopa Channel and Onehunga Wharf. Lit Buoys, Depths, Shoal Areas & Offshore Foul Grounds (continued)

6. Chart NZ 4315 [100/14]

Insert the accompanying block showing amendments to depths, contours and aid to navigations, centred on: 36° 56'.03S., 174° 46'.77E.

Replace  No.1 Q(2)G.3s with  No.1 Q(2)G.3s 37° 00'.93S., 174° 36'.77E.

 Spit Fl.G.3s 2m2M with  Spit Fl.G.3s 37° 01'.12S., 174° 36'.98E.

NZ Light List: 4116, 4116.1

New Zealand Hydrographic Authority
HITS 4315/114 & 43/69

Note: No tracings are included for this notice.

NZ 4315

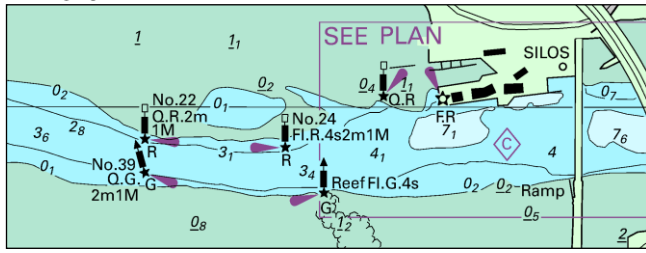


Image Size (mm) 31.9 x 85.1

