

NEW ZEALAND NOTICES TO MARINERS

Notices
NZ 51 – 58

© Crown Copyright 2007. All rights Reserved. Permission is not required to make analogue copies of these Notices but such copies are not to be sold.

CONTENTS

- I [Explanatory Notes.](#)
 - II [New Zealand Notices to Mariners.](#)
 - III [Corrections to New Zealand Light List.](#)
 - IV [Corrections to Sailing Directions and New Zealand Publications.](#)
 - V [Navigational Warnings. \(NAVAREA XIV\)](#)
 - VI [Corrections to Admiralty List of Radio Signals.](#)
-

New Zealand Notices to Mariners are the authority for correcting New Zealand charts within the New Zealand area of charting responsibility as shown in Notice No. 1.

Mariners are requested to immediately inform Land Information New Zealand, Private Box 5501 Wellington 6145, New Zealand Phone : 0800 665 463 or (04) 460-0110 Fax: (04) 460-0161 or e-mail: info@linz.govt.nz, of the discovery of new or suspected dangers to navigation, or shortcomings in charts and publications.

Changes or defects in aids to navigation should be reported to the Rescue Coordination Centre New Zealand (RCCNZ) via the nearest New Zealand Coastal Maritime Radio Station Phone : (04) 914-8380 Fax : (04) 914-8388 e-mail: rccnz@maritimenz.govt.nz.

Copies of these Notices can be obtained from Land Information New Zealand, Maritime New Zealand, Principal Chart Agents at the major ports of New Zealand and the Internet: <http://www.linz.govt.nz>

EXPLANATORY NOTES

Charts. The notices in Section II give instructions for the correction of charts. Geographical positions refer to the largest scale chart unless otherwise stated. They are normally given in degrees, minutes and decimals of a minute, but may occasionally quote seconds for convenience when plotting from the graduation of some older-style charts. Bearings are true reckoned clockwise from 000° to 359°; those relating to lights are given as seen by an observer from seaward. Symbols referred are those shown in publication *NZ 201*.

Alterations to depth contours, deletion of depths to make way for new detail, etc. are not mentioned unless they have some navigational significance.

Blocks or notes accompanying notices in Section II are placed after Section VI.

Temporary and Preliminary Notices. These are indicated by (T) or (P) after the notice number. A list of (T) and (P) Notices in force is published in the fortnightly Editions of Notices to Mariners. Charts are not corrected for them before issue; they should be corrected in pencil on receipt.

Light Lists. The detailed correction to the Light List is given in Section III and may not be published in the same edition as the chart correcting notice. The entire entry for each light is printed, and an asterisk (*) is shown under the column which contains an amendment. In the case of a new light, an asterisk (*) appears under all the columns. New and extensively altered entries are intended to be pasted in. It is recommended that a manuscript entry be made for all shorter corrections.

It is emphasized that the List of Lights is the authority for lights and that many alterations, especially those of a temporary but operational nature, may only be promulgated as corrections to the List of Lights.

Radio Signals. When radio signals are affected by a notice the Admiralty List of Radio Signals reference number is quoted. The detailed correction to the List of Radio Signals is given in Section VI and may be published in a later edition than the chart correcting notice.

Sailing Directions Corrections to Sailing Directions are given in Section IV. It is recommended that such corrections be kept together in a file with the latest list of those in force on top. The file can then be consulted when using the parent book to see if any notices affecting the area under consideration are extant.

Corrections should not be pasted into the parent book or Supplement as corrections may be issued between closing date and issue of a new Supplement. These will be embodied in the text of the following Supplement. A summary of corrections in force will be issued in Section IV of the Fortnightly Edition at monthly intervals.

New Zealand Publications. Corrections to New Zealand Publications are given in Section IV.

Correction of Charts and Publications by the User. New Zealand Notices to Mariners contain important information and should be used to keep the specified charts and books up to date.

THE USE OF CHARTS AND ASSOCIATED PUBLICATIONS

Reliance on Charts and Associated Publications. While every effort is made to ensure the accuracy of the information on New Zealand charts and other publications, it should be appreciated that it may not always be complete and up to date. The mariner must be the final judge of the reliance to be placed on the information given, bearing in mind their particular circumstances, local pilotage guidance and the judicious use of available navigational aids.

Charts. Charts should be used with prudence: there are areas where the source data are old, incomplete or of poor quality. The mariner should use the largest scale appropriate for his particular purpose; apart from being the most detailed, the larger scales are usually corrected first. When extensive new information (such as a new hydrographic survey) is received, some months may elapse before it can be fully incorporated in published charts. On small scale charts of ocean areas where hydrographic information is, in many cases, still sparse, charted shoals may be in error as regards position, least depth and extent. Undiscovered dangers may exist, particularly away from well-established routes.

Further guidance. The Mariner's Handbook (NP 100) gives a fuller explanation of the limitations of charts. All users should study it in their own interest.

II

NUMERICAL INDEX OF CHARTS AFFECTED
(NZ NTM Edition No.5 dated 2 March 2007)

NZ Chart No.	NZ Notices	INT Chart No.	Notices
NZ 21	NZ 55(P)	INT 641	NZ 55(P)
NZ 23	NZ 55(P), 57(T)	INT 640	NZ 55(P), 57(T)
NZ 25	NZ 55(P)	INT 648	NZ 55(P)
NZ 26	NZ 57(T)		
NZ 45	NZ 55(P)		
NZ 46	NZ 57(T)		
NZ 48	NZ 53, 55(P)		
NZ 56	NZ 57(T)		
NZ 57	NZ 57(T)		
NZ 58	NZ 57(T)		
NZ 61	NZ 53		
NZ 62	NZ 57(T)		
NZ 73	NZ 56(T)		
NZ 512	NZ 54(T)		
NZ 614	NZ 53		
NZ 5124	NZ 51, 54(T)		
NZ 5125	NZ 51		
NZ 5612	NZ 52		
NZ 6142	NZ 53		
NZ 6821	NZ 58(T)		

NEW ZEALAND TEMPORARY AND PRELIMINARY NOTICES IN FORCE

(NZ NTM Edition No.5 dated 2 March 2007)

NZ Notice	T/P	Charts Affected		Locality and Subject
		NZ	INT	
133/01	T	6612		Otago Hr.: Shoaling
154/02	T	534		Aldermen Islands: Shoal
180/03	T	6154		Picton Hr.: Shoal Depths.
129/04	T	52, 53, 522, 5227		Hauraki Gulf: Dredging Operations
194/04	P	46, 48, 61, 463, 614, 6151, 6152, 6153, 6154		Marlborough Sounds – Use of Automated Navigation Systems.
39/05	P	52, 53, 522, 531, 5225		Gt. Barrier Is.: Isolated Danger Buoy.
54/05	T	5322		Auckland Hr. : Works in Progress
110/05	T	8248		Tonga : Light Unlit
159/05	T	5322		Auckland Hr. Bridge: Precautionary Area.
161/05	P	4633, 4634		Wellington Hr.: Navigation Safety Bylaw
173/05	T	53, 54, 531, 534, 5318		Whitianga Hr. : Sandbar
208/05	T	53, 522, 5321		Mahurangi Hr.: Scientific Instruments.
219/05	T	614		Motueka River : Current Meter
237/05	T	5214, 5215		Whangarei Hr.: Light : Works in Progress
240/05	T	6821		Bluff Hr. : Depths
25/06	P	5214, 5215		Whangarei Hr.: Lights
36/06	T	5215		Whangarei Hr.: Shoaling
46/06	P	43, 443		Taranaki Bight: Works in Progress
69/06	T	43, 443		Taranaki Bight: Wave Recorder, Mooring Buoy
104/06	T	4314, 4315		Manukau Hr.: Light Destroyed, Light Buoy
123/06	T	5214, 5215		Whangarei Hr.: Works in Progress
141/06	T	42, 4212		Hokianga Hr. Entrance: Waverider Buoy
147/06	T	845, 14630, 14631	630, 631	Niue Is.: Navigational Aids, Lights
149/06	P	827, 8275		Tonga: Fishing & Anchoring Prohibited Areas
156/06	P			Australia: Torres Strait: Revised Pilotage
162/06	T	42, 43, 4314		Manukau Hr.: Ninepin Rock Light
167/06	T	5322		Waitemata Hr., Devonport: Works in Progress
176/06	T	23, 26, 56, 14060, 14600	60, 600, 640	N. Island, E. Coast: Scientific Instruments
177/06	T			Indian Ocean: Operation 'Enduring Freedom'
185/06	T	4633, 4634		Wellington Hr.: Racing Buoys
186/06	T	661		Approaches to Otago Hr.: Works in Progress
192/06	T	23, 43, 4424	640	Taharoa Offshore Terminal.: Light-Buoy
202/06	P	53, 532, 5321, 5322, 5324, 5325		Auckland Hr.: Rangitoto Channel.: Buoys
204/06	T	5322		Auckland Hr.: Calliope Wharves.: Buoys
205/06	T	532, 5324		Tamaki Strait: Motuihe Is.: E. Cardinal Lt Beacon
206/06	P	4265		Kaipara Hr.: Lights, Buoys and Beacons
213/06	P	6153, 6154		Picton Hr.: Lights
218/06	P	48, 61, 614		Tasman, Golden Bays: Spat Catching Areas
219/06	T	14051, 14052, 14060, 14061, 14604, 14605, 14606, 14607, 14629	51, 52, 60, 61, 604, 605, 606, 607, 629 640, 641, 648	North, South Pacific Ocean: Buoys
223/06	T	21, 23, 25, 45, 48, 443		Taranaki Westwards: Drilling Operations
224/06	T	4432		Port Taranaki: Dredging Operations
225/06	T	4432		Port Taranaki: Dredging Operations
230/06	P	52, 521, 5214, 5215		Whangarei Hr.: Deepwater Port Extension
232/06	T	54, 542		N. Island, E. Coast, Opotiki: Current Meter
234/06	T	56, 561		Hawke Bay: Research Light-Buoy
237/06	T	48, 61, 614		S. Island, N. Coast, Tasman Bay: Buoys
243/06	T	48, 61, 614		S. Island, N. Coast, Golden Bay: Buoys
244/06	T	23, 25, 63, 64	640, 648	Lyttelton Hr.: Waverider Buoy
245/06	T	5322, 5324		Auckland Hr., Rangitoto Channel: Buoys
21/07	T	21, 23, 25, 42, 43, 45, 48	640, 641 648	S. Taranaki Bight., Manukau to Kawhia: Seismic Surveys
22/07	P	43, 443		N. Taranaki Bight, Waitara Northwards: Drilling and pipelaying operations
27/07	T			Maritime Safety Broadcasts
30/07	T	54, 542		Bay of Plenty: Research Instruments.
37/07	T	53, 532, 533, 5327		Firth of Thames: Moorings, Research Instruments
40/07	T	23, 26, 46, 58, 62	640	Cape Palliser SE: Scientific Instruments
42/07	T	4314		Manukau Hr. Entrance: South West Channel
49/07	T	21, 23, 25, 45, 48	640, 641, 648	Taranaki Westwards: Buoys
55/07	P	21, 23, 25, 45, 48	640, 641, 648	Cape Egmont Westwards: Seabed Installation
56/07	T	73		S. Island, W. Coast, Jackson Bay: Dolphin Monitoring Sensors
57/07	T	23, 26, 46, 56, 57, 58, 62	640	Mahia Peninsula to Cape Palliser: Research Survey Work
58/07	T	6821		Bluff Hr.: South Davey Buoy Removed

NZ 51/07 NEW ZEALAND – North Island – East Coast – Bay of Islands – The Brothers – Light.

Chart NZ 5124 (plan, Kerikeri Inlet and Te Puna Inlet) [33/07]

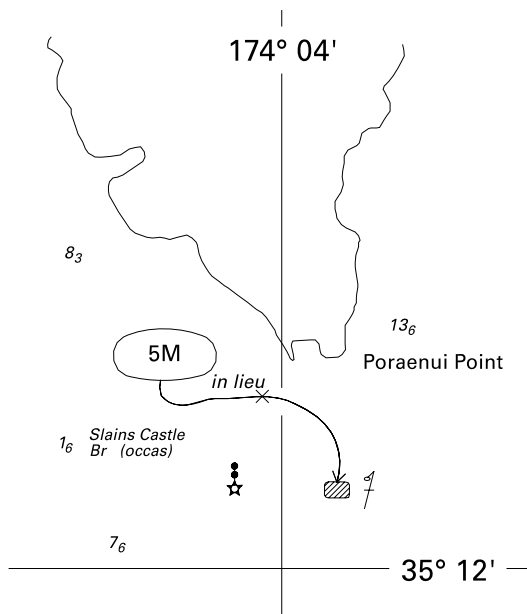
Amend range of light to, 5M 35° 11'.86S., 174° 03'.90E.

Chart NZ 5125 [45/07]

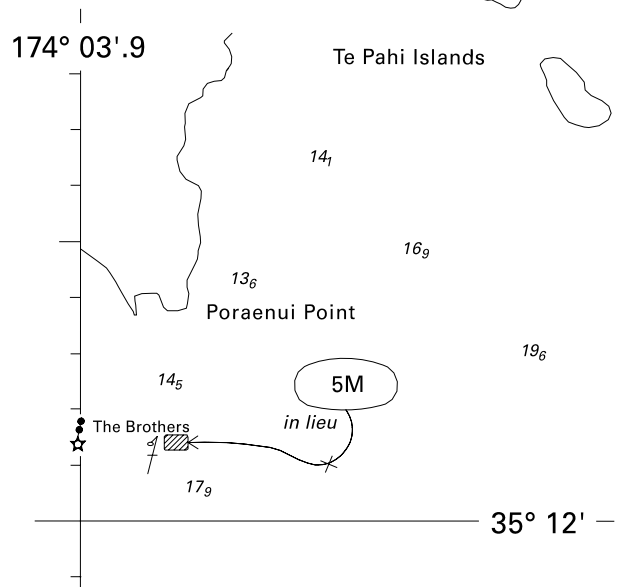
Amend range of light to, 5M 35° 11'.86S., 174° 03'.90E.

Northland Regional Council
 NZ Light List K3700.5
 NI 38/2007

**PLAN: KERIKERI INLET
 AND TE PUNA INLET
 RIGHT OF CENTRE**



LEFT ABOVE CENTRE



<i>Issued as a guide to chart correction. Use in conjunction with the appropriate NZ Notice to Mariners.</i>			<i>Issued as a guide to chart correction. Use in conjunction with the appropriate NZ Notice to Mariners.</i>		
LAST CORRECTION	NZ NTM No.	CHART No.	LAST CORRECTION	NZ NTM No.	CHART No.
NZ 33/07	NZ 51/07	NZ 5124	NZ 45/07	NZ 51/07	NZ 5125

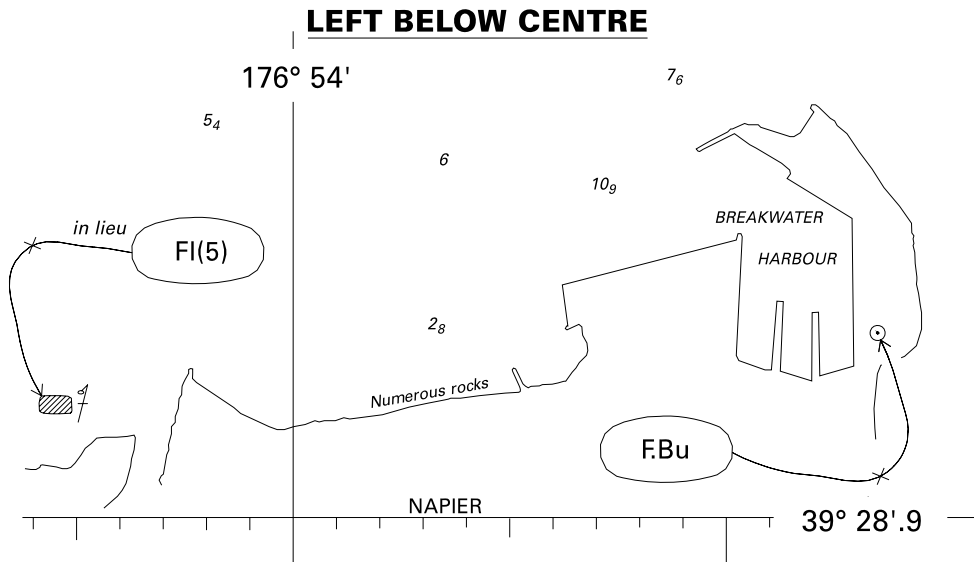
NZ 52/07 NEW ZEALAND – North Island – East Coast – Napier Roads – Lights.

Chart NZ 5612 [46/07]

Insert legend F.Bu 39° 28'.57S., 176° 55'.40E.

Amend character of light to, FI(5) 39° 28'.69S., 176° 53'.66E.

UKHO
 NZ Light List K3983.25, 3984.1
 NI 37/2007



<i>Issued as a guide to chart correction.</i>		<i>Use in conjunction with the appropriate NZ Notice to Mariners.</i>	
LAST CORRECTION	NZ NTM No.	CHART No.	
NZ 46/07	NZ 52/07	NZ 5612	

NZ 53/07 NEW ZEALAND – South Island – North Coast – Nelson – Schnapper Light.

Former Notice – NZ 228(P)/05 is cancelled.

Chart NZ 48 [26/07]

Amend character of light to, Fl(4) 41° 12'.19S., 173° 19'.42E.

Chart NZ 61 [161/06]

Amend character of light to, Fl(4) 41° 12'.19S., 173° 19'.42E.

Chart NZ 614 [161/06]

Insert sector at light, as follows (a) 41° 12'.19S., 173° 19'.42E.
W 047° - 225° (178°)

Amend sector at light, as follows (a) above
R 031° - 047° (16°)

Amend character of light to, Fl(4) (a) above

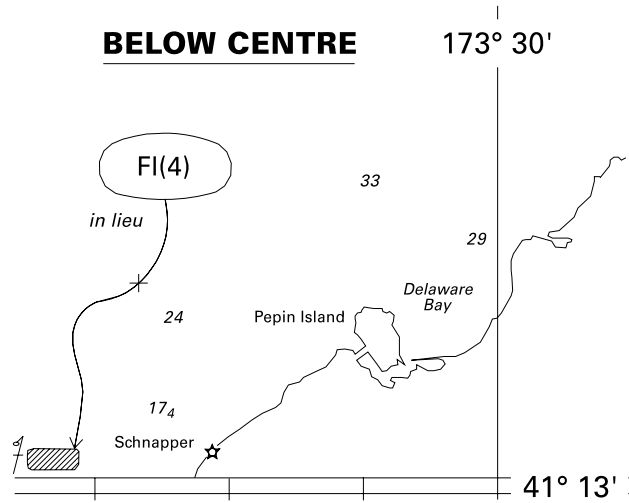
Chart NZ 6142 [161/06]

Insert sector at light, as follows (b) 41° 12'.19S., 173° 19'.42E.
W 047° - 225° (178°)

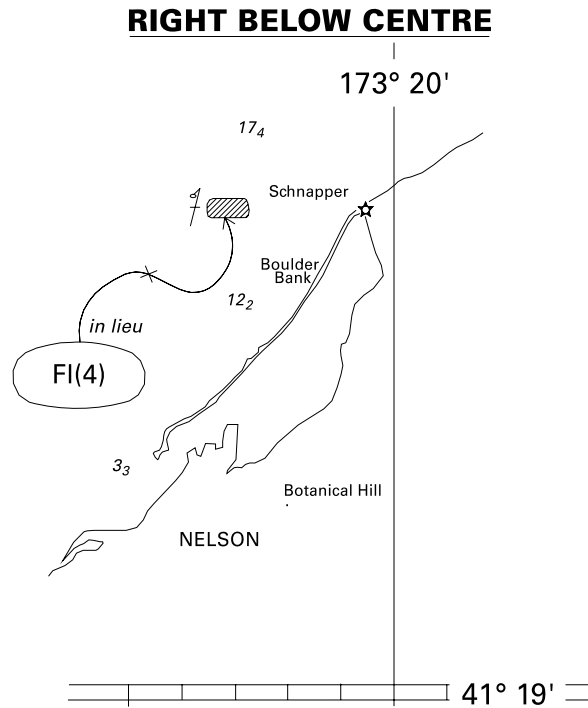
Amend sector at light, as follows (b) above
R 031° - 047° (16°)

Amend character of light to, Fl(4) (b) above

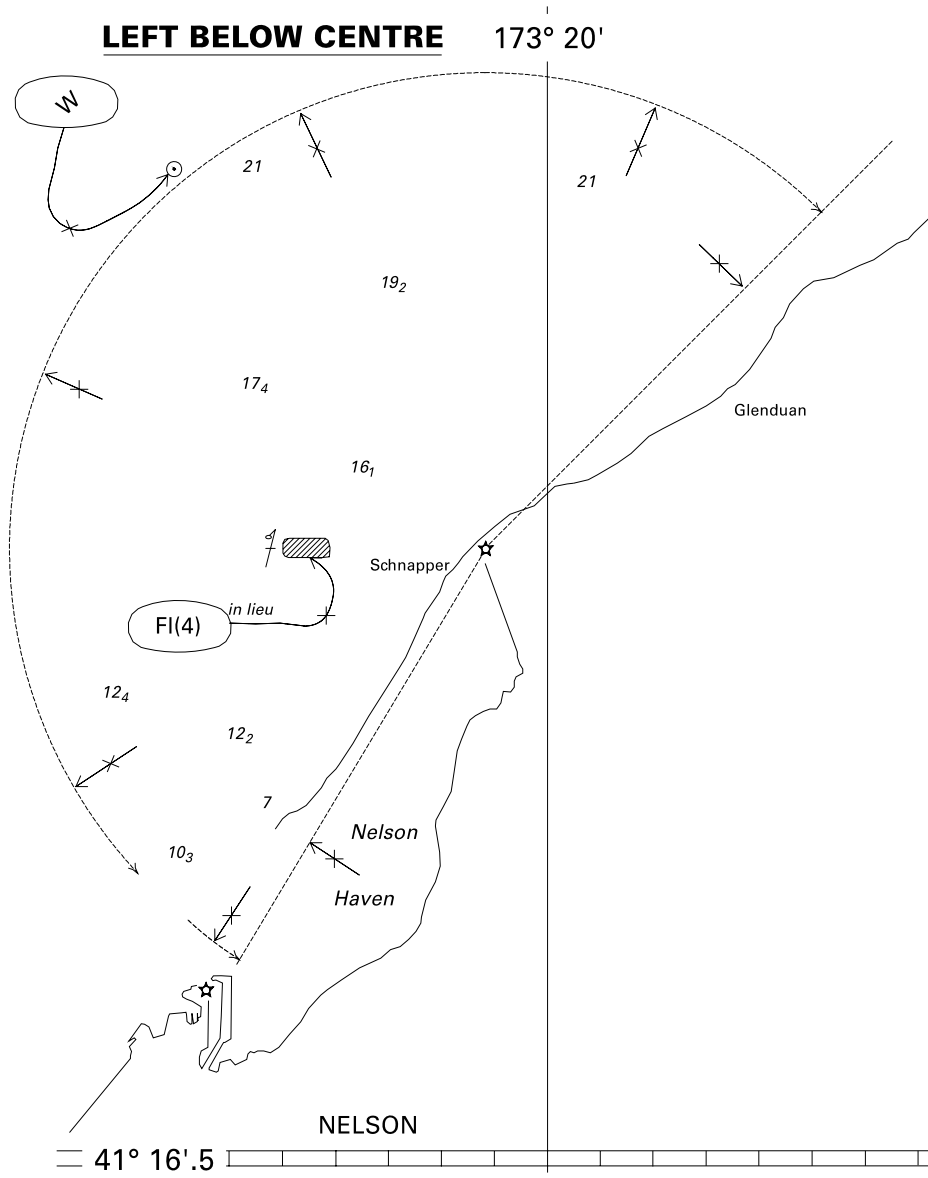
Port Nelson Ltd
NZ Light List K4222
NI 35/2007



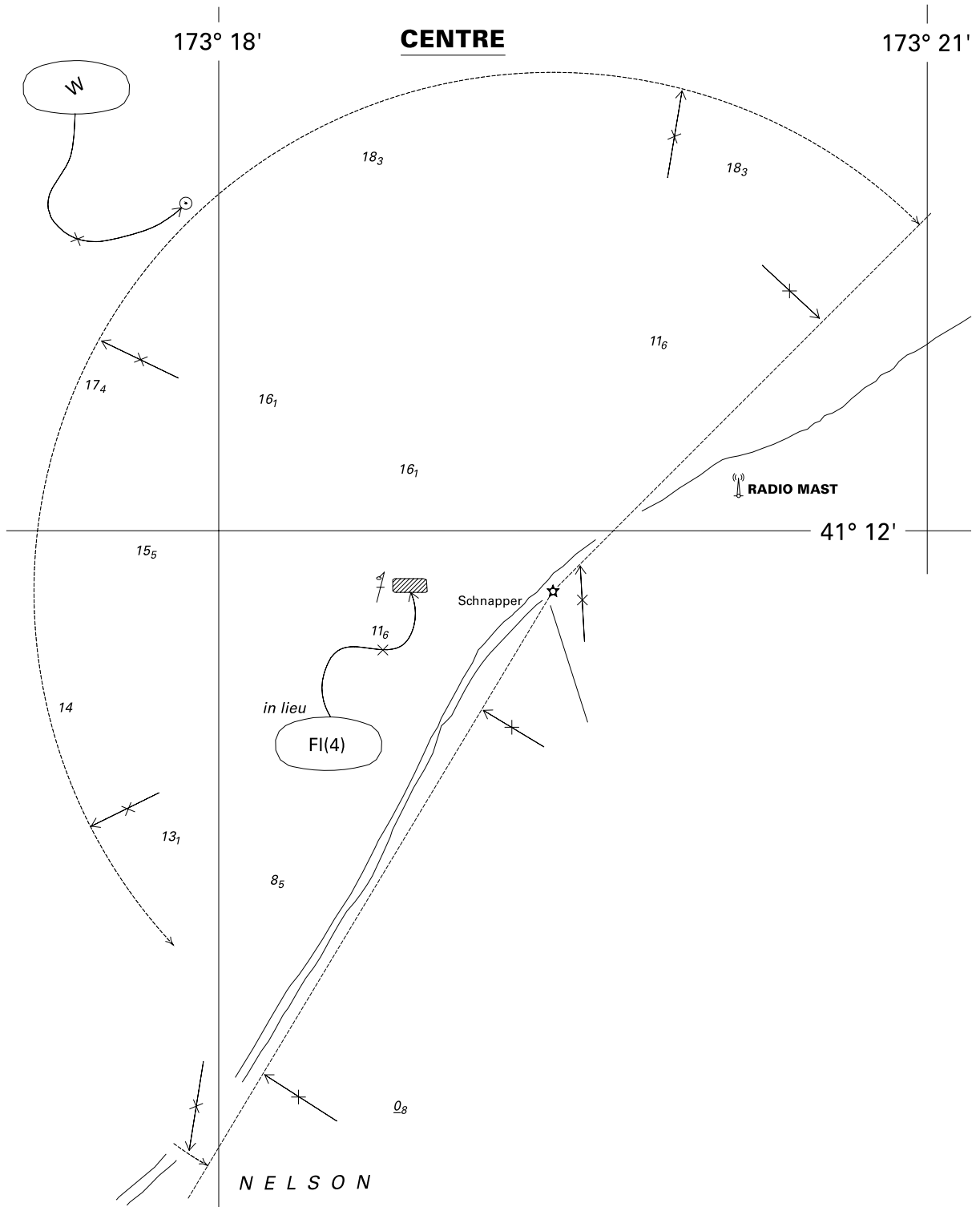
<i>Issued as a guide to chart correction.</i>		<i>Use in conjunction with the appropriate NZ Notice to Mariners.</i>	
LAST CORRECTION	NZ NTM No.	CHART No.	
NZ 26/07	NZ 53/07	NZ 48	



<i>Issued as a guide to chart correction.</i>		<i>Use in conjunction with the appropriate NZ Notice to Mariners.</i>	
LAST CORRECTION	NZ NTM No.	CHART No.	
NZ 161/06	NZ 53/07	NZ 61	



<i>Issued as a guide to chart correction.</i>		<i>Use in conjunction with the appropriate NZ Notice to Mariners.</i>	
LAST CORRECTION	NZ NTM No.	CHART No.	
NZ 161/06	NZ 53/07	NZ 614	



<i>Issued as a guide to chart correction.</i>		<i>Use in conjunction with the appropriate NZ Notice to Mariners.</i>	
LAST CORRECTION	NZ NTM No.	CHART No.	
NZ 161/06	NZ 53/07	NZ 6142	

**NZ 54(T)/07 NEW ZEALAND – North Island – East Coast – Bay of Islands – Veronica Channel –
Replacement of Underwater Power Cables.**

Former Notice – NZ 44(T)/07 is cancelled.

Cancel this notice on receipt.

Charts formerly affected – NZ 512 – NZ 5124

Northland Regional Council
NI 36/2007

NZ 55(P)/07 NEW ZEALAND – North Island – West Coast – Cape Egmont Westwards – Seabed Installation.

1. From 1st March through April 2007, the *Rockwater 2* (call sign C6BM5) will install sub-surface and seabed structures for the FPSO Umuroa within 1NM of position 39° 25'.66S., 173° 14'.21E.
2. On or about the 1st April 2007, the FPSO Umuroa will be installed in position 39° 25'.66S., 173° 14'.21E.
3. The vessels *Far Grip* (call sign LGRO), *Pacific Wrangler* (call sign 9V6218), *Pacific Challenger* (call sign 9V9547), *Pacific Chieftain* (call sign 9V5925) and *Pacific Runner* (call sign S6GS5) will assist at various times during the period.
4. All vessels should pass 5NM clear of the area.

Charts temporarily affected – NZ 21 (INT 641) – NZ 23 (INT 640) – NZ 25 (INT 648) – NZ 45 – NZ 48

Australia Worldwide Exploration Ltd
NI 34/2007

NZ 56(T)/07 NEW ZEALAND – South Island – West Coast – Jackson Bay – Dolphin Monitoring Sensors.

1. Dolphin monitoring sensors have been laid at the following four locations in Jackson Bay until further notice.
 - i. 43° 58'.77S., 168° 38'.45E.
 - ii. 43° 58'.95S., 168° 38'.65E.
 - iii. 43° 58'.95S., 168° 38'.35E.
 - iv. 43° 58'.72S., 168° 38'.16E.
2. Each sensor is suspended below an unlit orange buoy and moored to the seabed.
3. Mariners are requested to exercise caution when navigating in the area.

Charts temporarily affected – NZ 73

NIWA
NI 40/2007

NZ 57(T)07 NEW ZEALAND – North Island – East Coast – Mahia Peninsula to Cape Palliser – Research Survey Work.

1. The *RV SONNE* (call sign DFCG) is undertaking survey work until the end of March 2007 in the area bounded by the following coordinates:

39° 18'S., 177° 50'E.
39° 18'S., 178° 30'E.
40° 10'S., 178° 30'E.
41° 30'S., 177° 00'E.
41° 50'S., 175° 10'E.
41° 30'S., 175° 10'E.

2. All vessels are requested to pass at least 2NM clear of the *RV SONNE*.

Charts temporarily affected – NZ 23 (INT 640) – NZ 26 – NZ 46 – NZ 56 – NZ 57 – NZ 58 – NZ 62

RV Sonne
NI 41/2007

NZ 58(T)/07 NEW ZEALAND – South Island – South Coast – Bluff Harbour – Light-Buoy.

Former Notice - NZ 194(T)/06 is cancelled.

1. The South Davey Buoy (46° 36'.83S., 168° 22'.04E) has been removed until further notice.
2. Mariners are requested to exercise caution when navigating in this area.

Chart temporarily affected – NZ 6821


South Port NZ Ltd
NI 42/2007

III

CORRECTIONS TO NEW ZEALAND LIGHT LIST

(NZ NTM Edition No.5 dated 2 March 2007)

NEW ZEALAND NAUTICAL ALMANAC 2006/07 LIGHT LIST SECTION

3700.5	-The Brothers	35 11.86 174 03.90	Q. (2) W. 5 s	5	5	Black  on black pile with red band 5	<i>fl 0.3, ec 0.7, fl 0.3, ec 3.7</i>
	*	*			*		
4222	-Schnapper	41 12.19 173 19.42	Fl. (4) W. R. 20 s	13	W15 R8	Steel column 11	<i>(fl 0.06, ec 3.24) x 3, fl 0.06, ec 9.94</i> R. 031°-047° (16°) W. 047°-225° (178°) Ra refl.
	*	*	*		*		*

(NI 35,38/2007)

IV

CORRECTIONS TO PUBLICATIONS

(NZ NTM Edition No.5 dated 2 March 2007)

Nil

V

NAVIGATIONAL WARNINGS

Navarea XIV warnings in force 28 February 2007

NAVAREA XIV (South West Pacific)

- 049/06 SOUTH PACIFIC. VOLUNTARY SHIP REPORTING SYSTEM IN THE NEW ZEALAND SEARCH AND RESCUE AREA SOUTH OF 60° SOUTH
1. The New Zealand Search and Rescue authorities have established a voluntary ship reporting system for all vessels operating in the NZSAR region south of 60° south for the purposes of assisting the SAR authority in coordinating SAR operations in that area.
 2. Area covered: 60°S to the southern edge of the Ross Sea bounded by 163°E to 131°W.
 3. All vessels are requested to notify Taupo Maritime Radio on entry and departure into the area and are also encouraged to make daily position reports. Information provided will be used for SAR purposes only.
 4. Taupo Maritime Radio can be contacted on Inmarsat C 582 451 200 067, HF, email maritime@kordia.co.nz or 00 64 4 914 8333
- 005/07 SOUTH PACIFIC OCEAN. TONGA. VOLCANIC ACTIVITY. INT CHART 605
1. A new active volcanic island is reported in position 18 59S, 174 46W.
 2. Vessels advised to navigate with caution in this area.
- 007/07 SOUTH PACIFIC OCEAN. TONGA. VOLCANIC ACTIVITY. INT CHART 631
1. Volcanic activity reported in position 20 51.3S 175 33.1W
 2. Smoke visible on surface, no floating pumice reported.

V

010/07 SOUTH PACIFIC. FIJI LIGHTS. INT CHART 638

Following light reported unlit: Navula Point K4706 17 53.2s 177 15.2e.

VI

CORRECTIONS TO ADMIRALTY LIST OF RADIO SIGNALS

(NZ NTM Edition No.5 dated 2 March 2007)

Nil
