

NEW ZEALAND NOTICES TO MARINERS

Notices

NZ 81 – 91

© Crown Copyright 2007. All rights Reserved. Permission is not required to make analogue copies of these Notices but such copies are not to be sold.

CONTENTS

- I [Explanatory Notes.](#)
 - II [New Zealand Notices to Mariners.](#)
 - III [Corrections to New Zealand Light List.](#)
 - IV [Corrections to Sailing Directions and New Zealand Publications.](#)
 - V [Navigational Warnings. \(NAVAREA XIV\)](#)
 - VI [Corrections to Admiralty List of Radio Signals.](#)
-

New Zealand Notices to Mariners are the authority for correcting New Zealand charts within the New Zealand area of charting responsibility as shown in Notice No. 1.

Mariners are requested to immediately inform Land Information New Zealand, Private Box 5501 Wellington 6145, New Zealand Phone : 0800 665 463 or (04) 460-0110 Fax: (04) 460-0161 or e-mail: info@linz.govt.nz, of the discovery of new or suspected dangers to navigation, or shortcomings in charts and publications.

Changes or defects in aids to navigation should be reported to the Rescue Coordination Centre New Zealand (RCCNZ) via the nearest New Zealand Coastal Maritime Radio Station Phone : (04) 914-8380 Fax : (04) 914-8388 e-mail: rccnz@maritimenz.govt.nz.

Copies of these Notices can be obtained from Land Information New Zealand, Maritime New Zealand, Principal Chart Agents at the major ports of New Zealand and the Internet: <http://www.linz.govt.nz>

EXPLANATORY NOTES

Charts. The notices in Section II give instructions for the correction of charts. Geographical positions refer to the largest scale chart unless otherwise stated. They are normally given in degrees, minutes and decimals of a minute, but may occasionally quote seconds for convenience when plotting from the graduation of some older-style charts. Bearings are true reckoned clockwise from 000° to 359°; those relating to lights are given as seen by an observer from seaward. Symbols referred are those shown in publication *NZ 201*.

Alterations to depth contours, deletion of depths to make way for new detail, etc. are not mentioned unless they have some navigational significance.

Blocks or notes accompanying notices in Section II are placed after Section VI.

Temporary and Preliminary Notices. These are indicated by (T) or (P) after the notice number. A list of (T) and (P) Notices in force is published in the fortnightly Editions of Notices to Mariners. Charts are not corrected for them before issue; they should be corrected in pencil on receipt.

Light Lists. The detailed correction to the Light List is given in Section III and may not be published in the same edition as the chart correcting notice. The entire entry for each light is printed, and an asterisk (*) is shown under the column which contains an amendment. In the case of a new light, an asterisk (*) appears under all the columns. New and extensively altered entries are intended to be pasted in. It is recommended that a manuscript entry be made for all shorter corrections.

It is emphasized that the List of Lights is the authority for lights and that many alterations, especially those of a temporary but operational nature, may only be promulgated as corrections to the List of Lights.

Radio Signals. When radio signals are affected by a notice the Admiralty List of Radio Signals reference number is quoted. The detailed correction to the List of Radio Signals is given in Section VI and may be published in a later edition than the chart correcting notice.

Sailing Directions Corrections to Sailing Directions are given in Section IV. It is recommended that such corrections be kept together in a file with the latest list of those in force on top. The file can then be consulted when using the parent book to see if any notices affecting the area under consideration are extant.

Corrections should not be pasted into the parent book or Supplement as corrections may be issued between closing date and issue of a new Supplement. These will be embodied in the text of the following Supplement. A summary of corrections in force will be issued in Section IV of the Fortnightly Edition at monthly intervals.

New Zealand Publications. Corrections to New Zealand Publications are given in Section IV.

Correction of Charts and Publications by the User. New Zealand Notices to Mariners contain important information and should be used to keep the specified charts and books up to date.

THE USE OF CHARTS AND ASSOCIATED PUBLICATIONS

Reliance on Charts and Associated Publications. While every effort is made to ensure the accuracy of the information on New Zealand charts and other publications, it should be appreciated that it may not always be complete and up to date. The mariner must be the final judge of the reliance to be placed on the information given, bearing in mind their particular circumstances, local pilotage guidance and the judicious use of available navigational aids.

Charts. Charts should be used with prudence: there are areas where the source data are old, incomplete or of poor quality. The mariner should use the largest scale appropriate for his particular purpose; apart from being the most detailed, the larger scales are usually corrected first. When extensive new information (such as a new hydrographic survey) is received, some months may elapse before it can be fully incorporated in published charts. On small scale charts of ocean areas where hydrographic information is, in many cases, still sparse, charted shoals may be in error as regards position, least depth and extent. Undiscovered dangers may exist, particularly away from well-established routes.

Further guidance. The Mariner's Handbook (NP 100) gives a fuller explanation of the limitations of charts. All users should study it in their own interest.

II

NUMERICAL INDEX OF CHARTS AFFECTED

(NZ NTM Edition No.8 dated 13 April 2007)

NZ Chart No.	NZ Notices	INT Chart No.	Notices
NZ 21	NZ 86(T), 87(T), 88(T), 89(T)	INT 641	NZ 86(T), 87(T), 88(T), 89(T)
NZ 22	NZ 85(T)	INT 639	NZ 85(T)
NZ 23	NZ 85(T), 86(T), 87(T), 88(T), 89(T), 91(T)	INT 640	NZ 85(T), 86(T), 87(T), 88(T), 89(T), 91(T)
NZ 25	NZ 85(T), 86(T), 87(T), 88(T), 91(T)	INT 648	NZ 85(T), 86(T), 87(T), 88(T), 91(T)
NZ 26	NZ 85(T)		
NZ 42	NZ 88(T), 89(T)		
NZ 43	NZ 88(T), 89(T)		
NZ 45	NZ 86(T), 87(T), 88(T)		
NZ 46	NZ 85(T)		
NZ 48	NZ 86(T), 87(T), 88(T), 90(T)		
NZ 53	NZ 83		
NZ 54	NZ 83, 85(T)		
NZ 55	NZ 85(T)		
NZ 56	NZ 85(T)		
NZ 58	NZ 85(T)		
NZ 61	NZ 90(T)		
NZ 62	NZ 85(T)		
NZ 63	NZ 91(T)		
NZ 64	NZ 91(T)		
NZ 66	NZ 91(T)		
NZ 223F	NZ 85(T)		
NZ 443	NZ 86(T)		
NZ 534	NZ 83		
NZ 561	NZ 85(T)		
NZ 614	NZ 90(T)		
NZ 632	NZ 91(T)		
NZ 661	NZ 91(T)		
NZ 5327	NZ 82		
NZ 5328	NZ 82		
NZ 5612	NZ 85(T)		
NZ 6142	NZ 84		
NZ 14060	NZ 85(T)	INT 60	NZ 85(T)
NZ 14600	NZ 85(T)	INT 600	NZ 85(T)
NZ 14605	NZ 85(T)	INT 605	NZ 85(T)

NEW ZEALAND TEMPORARY AND PRELIMINARY NOTICES IN FORCE

(NZ NTM Edition No.8 dated 13 April 2007)

NZ Notice	T/P	Charts Affected		Locality and Subject
		NZ	INT	
133/01	T	6612		Otago Hr.: Shoaling
180/03	T	6154		Picton Hr.: Shoal Depths.
129/04	T	52, 53, 522, 5227		Hauraki Gulf: Dredging Operations
194/04	P	46, 48, 61, 463, 614, 6151, 6152, 6153, 6154		Marlborough Sounds – Use of Automated Navigation Systems.
39/05	P	52, 53, 522, 531, 5225		Gt. Barrier Is.: Isolated Danger Buoy.
54/05	T	5322		Auckland Hr. : Works in Progress
110/05	T	8248		Tonga : Light Unlit
159/05	T	5322		Auckland Hr. Bridge: Precautionary Area.
161/05	P	4633, 4634		Wellington Hr.: Navigation Safety Bylaw
173/05	T	53, 54, 531, 534, 5318		Whitianga Hr. : Sandbar
219/05	T	614		Motueka River : Current Meter
237/05	T	5214, 5215		Whangarei Hr.: Light : Works in Progress
240/05	T	6821		Bluff Hr. : Depths
25/06	P	5214, 5215		Whangarei Hr.: Lights
36/06	T	5215		Whangarei Hr.: Shoaling
46/06	P	43, 443		Taranaki Bight: Works in Progress
69/06	T	43, 443		Taranaki Bight: Wave Recorder, Mooring Buoy
104/06	T	4314, 4315		Manukau Hr.: Light Destroyed, Light Buoy
123/06	T	5214, 5215		Whangarei Hr.: Works in Progress
141/06	T	42, 4212		Hokianga Hr. Entrance: Waverider Buoy
149/06	P	827, 8275		Tonga: Fishing & Anchoring Prohibited Areas
162/06	T	42, 43, 4314		Manukau Hr.: Ninepin Rock Light
167/06	T	5322		Waitemata Hr., Devonport: Works in Progress
176/06	T	23, 26, 56, 14060, 14600	60, 600, 640	N. Island, E. Coast: Scientific Instruments
177/06	T			Indian Ocean: Operation 'Enduring Freedom'
185/06	T	4633, 4634		Wellington Hr.: Racing Buoys
186/06	T	661		Approaches to Otago Hr.: Works in Progress
202/06	P	53, 532, 5321, 5322, 5324, 5325		Auckland Hr.: Rangitoto Channel.: Buoys
205/06	T	532, 5324		Tamaki Strait: Motuihe Is.: E. Cardinal Lt Beacon
206/06	P	4265		Kaipara Hr.: Lights, Buoys and Beacons
213/06	P	6153, 6154		Picton Hr.: Lights
218/06	P	48, 61, 614		Tasman, Golden Bays: Spat Catching Areas
219/06	T	14051, 14052, 14060, 14061, 14604, 14605, 14606, 14607, 14629	51, 52, 60, 61, 604, 605, 606, 607, 629	North, South Pacific Ocean: Buoys
225/06	T	4432		Port Taranaki: Dredging Operations
230/06	P	52, 521, 5214, 5215		Whangarei Hr.: Deepwater Port Extension
234/06	T	56, 561		Hawke Bay: Research Light-Buoy
243/06	T	48, 61, 614		S. Island, N. Coast, Golden Bay: Buoys
244/06	T	23, 25, 63, 64	640, 648	Lyttelton Hr.: Waverider Buoy
245/06	T	5322, 5324		Auckland Hr., Rangitoto Channel: Buoys
22/07	P	43, 443		N. Taranaki Bight, Waitara Northwards: Drilling and pipelaying operations
27/07	T			Maritime Safety Broadcasts
30/07	T	54, 542		Bay of Plenty: Research Instruments.
37/07	T	53, 532, 533, 5327		Firth of Thames: Moorings, Research Instruments
40/07	T	23, 26, 46, 58, 62	640	Cape Palliser SE: Scientific Instruments
42/07	T	4314		Manukau Hr. Entrance: South West Channel
49/07	T	21, 23, 25, 45, 48	640, 641, 648	Taranaki Westwards: Buoys
55/07	P	21, 23, 25, 45, 48	640, 641, 648	Cape Egmont Westwards: Seabed Installation
56/07	T	73		S. Island, W. Coast, Jackson Bay: Dolphin Monitoring Sensors
62/07	T	53, 54, 531, 5318		N. Island, E. Coast, Buffalo Bay: Scientific Instruments
63/07	T	4633		Wellington Harbour: Race Marker Buoys
68/07	T	53, 532, 5324		N. Island, Tamaki Strait: Light-Beacon
76/07	T	6422		S. Island, Timaru Approaches: Light-Buoy
77/07	T	22, 23, 54, 222, 223F, 542, 2225, 5423, 14060, 14061, 14600, 14602, 14605, 14613, 14638	60, 61, 600, 602, 605, 613, 638, 639, 640	Kermadec Trench: Research Survey Work
80/07	T	845, 14630, 14631	630, 631	Niue Is.: Navigational Aids, Lights

(continued)

II

(continued)

85/07	T	22, 23, 25, 26, 46, 54, 55, 56, 58, 62, 223F, 561, 5612, 14060, 14600, 14605	60, 600, 605, 639, 640, 648	Cooks Strait to East Cape Northwards: Seismic Surveys
87/07	T	21, 23, 25, 45, 48	640, 641, 648	Taranaki Westwards: Drilling Operations
89/07	T	21, 23, 42, 43	640, 641	N. Island, W. Coast, Manukau to Kawhia: Seismic Survey

NZ 81/07 BRITISH ADMIRALTY PUBLICATIONS – New Edition Published.

<i>NP No.</i>	<i>Title and other remarks</i>	<i>Date</i>	<i>Remarks</i>
NP 282	Admiralty List of Radio Signals. Radio Aids to Navigation, Satellite Navigation Systems, Legal Time, Radio Time Signals and Electronic Position Fixing System. Edition 2007/08.	29/03/2007	Corrections accrued whilst the publication was in the press, from Week 01/07 to Week 13/07 inclusive, and are issued in Section VI of the Weekly Editions of Admiralty Notices to Mariners commencing with this weeks edition. This edition supersedes the 2006/07 edition of NP 282 which is thereby cancelled.

UKHO Weekly Edition 13/07
NI 73/2007

NZ 82/07 NEW ZEALAND – North Island – East Coast – Coromandel Harbour – Buoys.

Chart NZ 5327 [126/06]

Substitute  for  36° 48'.36S., 175° 26'.46E.
 G

 for  36° 48'.44S., 175° 28'.10E.
 G G

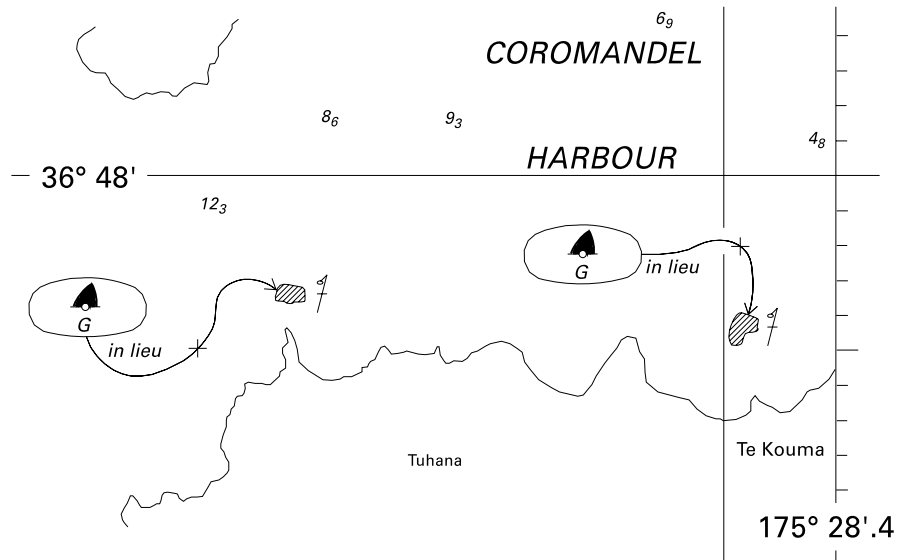
Chart NZ 5328 [126/06]

Substitute  for  36° 48'.36S., 175° 26'.46E.
 G

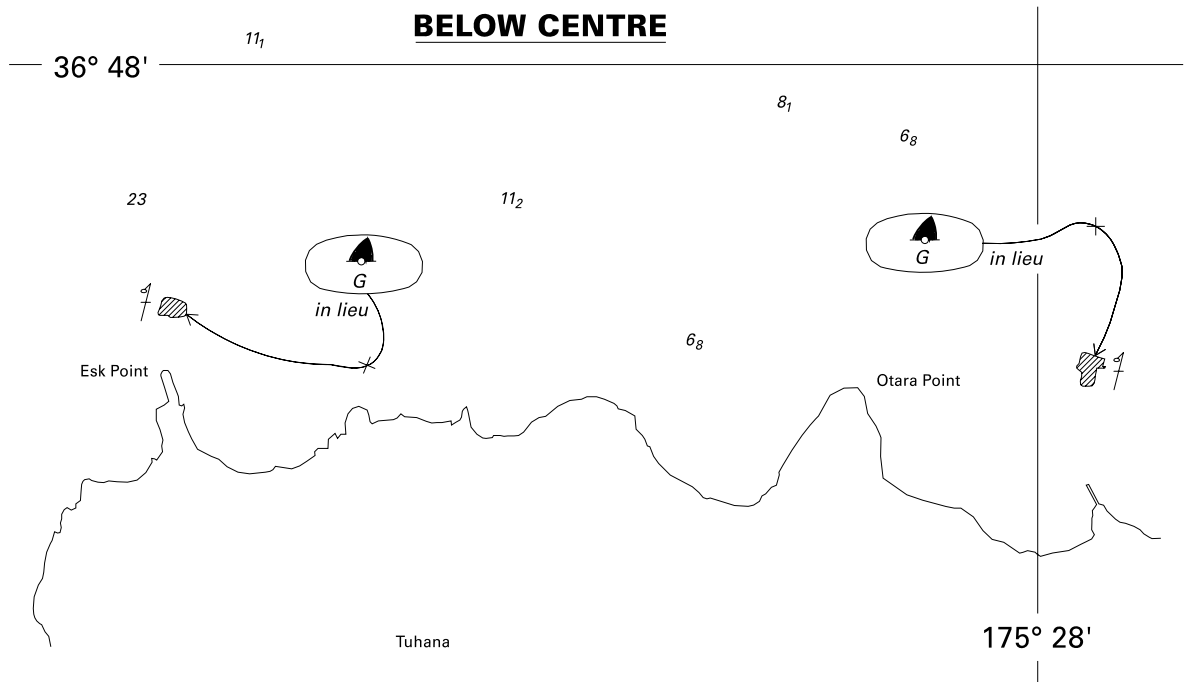
 for  36° 48'.44S., 175° 28'.10E.
 G G

Land Information New Zealand
 NI 43/2007

RIGHT OF CENTRE



<i>Issued as a guide to chart correction.</i>		<i>Use in conjunction with the appropriate NZ Notice to Mariners.</i>
LAST CORRECTION	NZ NTM No.	CHART No.
NZ 126/06	NZ 82/07	NZ 5327



<i>Issued as a guide to chart correction.</i>		<i>Use in conjunction with the appropriate NZ Notice to Mariners.</i>	
LAST CORRECTION	NZ NTM No.	CHART No.	
NZ 126/06	NZ 82/07	NZ 5328	

NZ 83/07 NEW ZEALAND – North Island – East Coast – Bay of Plenty – Aldermen Islands – Uncharted Rock.

Former Notice – NZ 154(T)/02 is cancelled.

Chart NZ 53 [215/06]

Substitute  Rep (2002) for depth 21 36° 58'.2S., 176° 05'.5E.

Chart NZ 54 [95/05]

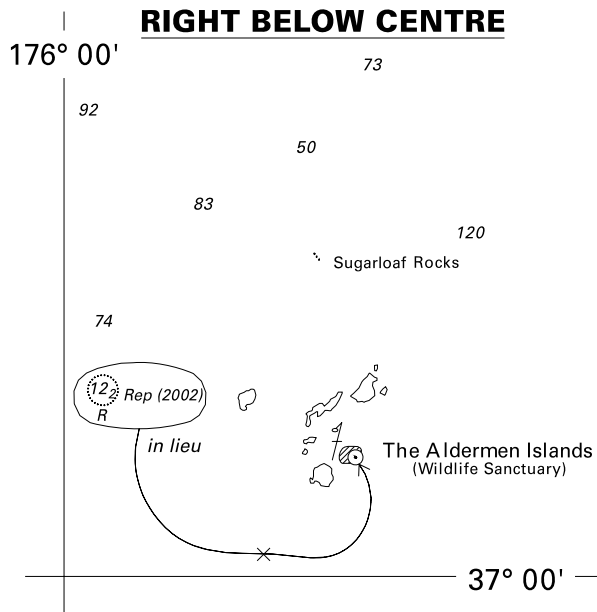
Insert  Rep (2002) 36° 58'.2S., 176° 05'.5E.

Chart NZ 534 [70/04]

Insert  Rep (2002) 36° 58'.2S., 176° 05'.5E.

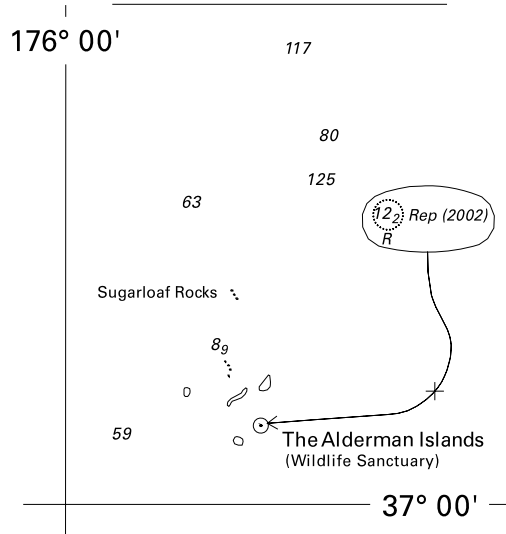
Delete depth 21 36° 58'.2S., 176° 05'.4E.

HMNZS *Kiwi*
 NI 76/2007



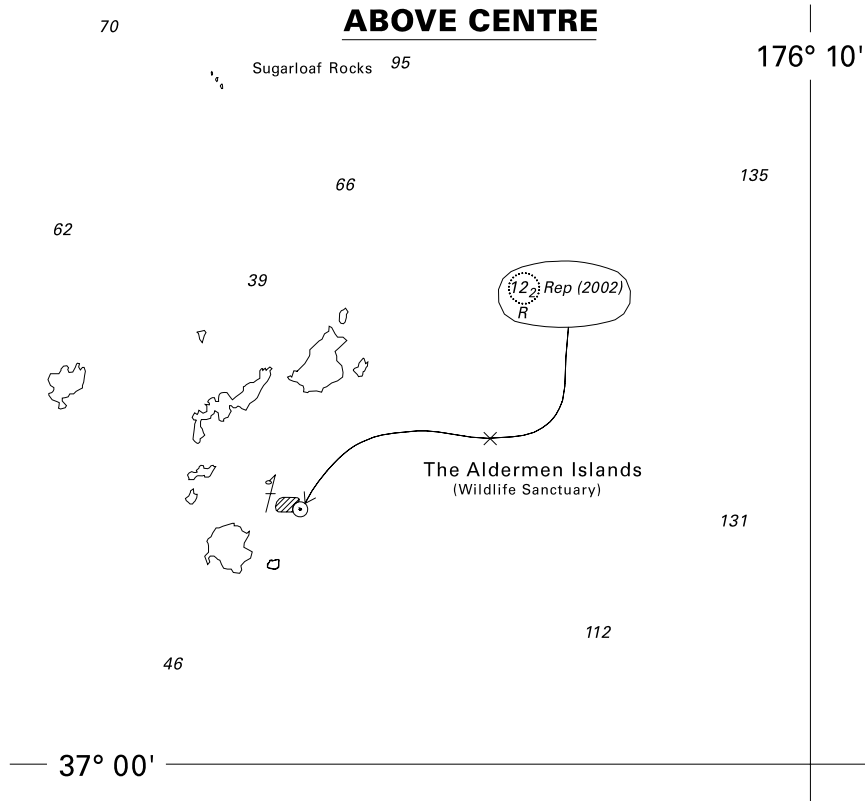
<i>Issued as a guide to chart correction.</i>		<i>Use in conjunction with the appropriate NZ Notice to Mariners.</i>	
LAST CORRECTION	NZ NTM No.	CHART No.	
NZ 215/06	NZ 83/07	NZ 53	

LEFT ABOVE CENTRE



<i>Issued as a guide to chart correction.</i>		<i>Use in conjunction with the appropriate NZ Notice to Mariners.</i>	
LAST CORRECTION	NZ NTM No.	CHART No.	
NZ 95/05	NZ 83/07	NZ 54	

ABOVE CENTRE



<i>Issued as a guide to chart correction.</i>		<i>Use in conjunction with the appropriate NZ Notice to Mariners.</i>	
LAST CORRECTION	NZ NTM No.	CHART No.	
NZ 70/04	NZ 83/07	NZ 534	

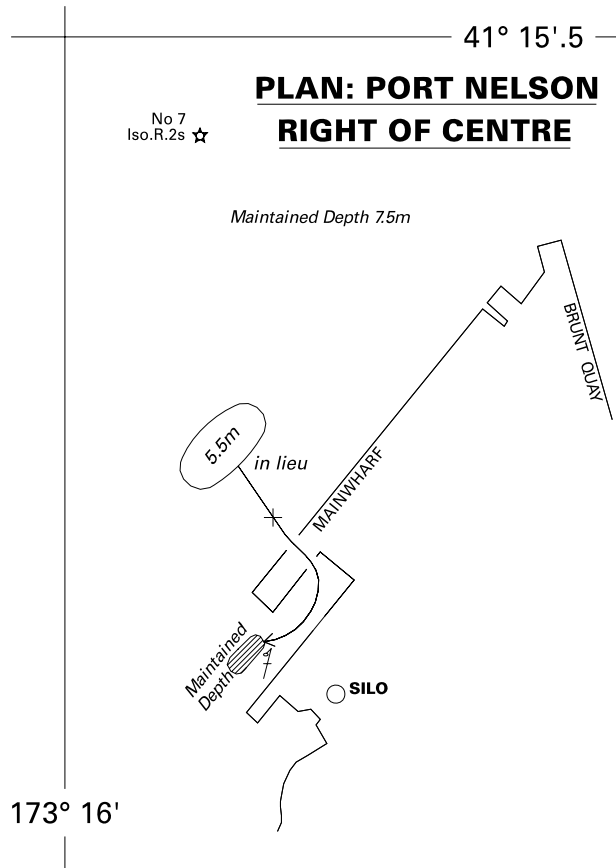
NZ 84/07 NEW ZEALAND – South Island – North Coast – Nelson – Maintained Depth.

Chart NZ 6142 (plan, Port Nelson) [53/07]

Amend maintained depth to 5.5m

41° 15'.77S., 173° 16'.10E.

Port Nelson Ltd
 NI 75/2007



<i>Issued as a guide to chart correction.</i>		<i>Use in conjunction with the appropriate NZ Notice to Mariners.</i>	
LAST CORRECTION	NZ NTM No.	CHART No.	
NZ 53/07	NZ 84/07	NZ 6142	

NZ 85(T)/07 NEW ZEALAND – North Island – East Coast – Cooks Strait to East Cape Northwards – Seismic Surveys.

1. From middle of April until the end of May 2007 the *CGG Duke* (call sign LACS4) will undertake seismic work in the areas bounded by the following coordinates:

Hawke Bay	38° 49'S.,	177° 56'E.
	38° 49'S.,	178° 10'E.
	39° 00'S.	178° 35'E.
	39° 47'S.,	178° 00'E.
	39° 56'S.,	177° 30'E.
	39° 48'S.,	177° 00'E.
East Cape	37° 58'S.,	178° 42'E.
	38° 05'S.,	179° 00'E.
	38° 30'S.,	178° 42'E.
	38° 22'S.,	178° 24'E.
East Cape (northwards)	34° 00'S.,	179° 30'E.
	35° 00'S.,	177° 30'W.
	38° 00'S.,	180° 00'E.
	37° 41'S.,	178° 33'E.
	37° 32'S.,	178° 00'E.
	37° 00'S.,	177° 00'E.
Cook Strait	41° 30'S.	175° 35'E
	42° 00'S.	176° 00'E
	42° 40'S.	174° 30'E
	42° 15'S.	174° 00'E

2. *CGG Duke* will be deploying streamers up to 8km long and is restricted in its ability to manoeuvre.
3. The end of the streamer will be marked by a yellow buoy and flashing light.
4. All vessels are requested to pass at least 5NM clear of the *CGG Duke* and tail buoy.
5. The chase boat *Raubtier* (call sign ZMQ4757) will accompany the *CGG Duke*.
6. *CGG Duke* will be monitoring VHF channel 16.
7. Mariners are requested to exercise caution when navigating in this area.

Charts temporarily affected – NZ 22 (INT 639) – NZ 23 (INT 640) – NZ 25 (INT 648) – NZ 26 – NZ 46 – NZ 54 – NZ 55 – NZ 56 – NZ 58 – NZ 62 – NZ 223F – NZ 561 – NZ 5612 – NZ 14060 (INT 60) – NZ 14600 (INT 600) – NZ 14605 (INT 605)

Pogo Producing Company
 NI 81/2007

**NZ 86(T)/07 NEW ZEALAND – North Island – West Coast – Cape Egmont – Taranaki Westwards –
Drilling Operations.**

Former Notice – NZ 223(T)/06 is cancelled.

Cancel this notice on receipt.

Charts formerly affected – NZ 21 (INT 641) – NZ 23 (INT 640) – NZ 25 (INT 648) – NZ 45 – NZ 48 – NZ 443

Australian Worldwide Exploration Ltd
NI 77/2007

**NZ 87(T)/07 NEW ZEALAND – North Island – West Coast – Cape Egmont – Taranaki Westwards –
Drilling Operations.**

1. The semi-submersible drilling rig, *Ocean Patriot*, will be undertaking drilling operations in the following positions, until further notice:

Pateke-3H	39° 22'.9S.,	173° 12'.4E.
Amokura-2H	39° 25'.4S..	173° 12'.7E.
2. Two anchor-handling vessels, *Far Grip* (call sign LGRO) and *Pacific Wrangler* (call sign 9VICTOR6218) will assist in operations and act as supply vessels for the duration of the drilling.
3. The *Ocean Patriot* (call sign V7EL6) will monitor VHF channel 16.
4. All vessels should pass 5NM clear of the rig.

Charts temporarily affected – NZ 21 (INT 641) – NZ 23 (INT 640) – NZ 25 (INT 648) – NZ 45 – NZ 48

Australia Worldwide Exploration Ltd
NI 78/2007

**NZ 88(T)/07 NEW ZEALAND – North Island – South Coast – South Taranaki Bight, West Coast –
Tasman Sea – Manukau to Kawhia – Seismic Surveys.**

Former Notice – NZ 21(T)/07 is cancelled.

Cancel this notice on receipt.

**Charts formerly affected – NZ 21 (INT 641) – NZ 23 (INT 640) – NZ 25 (INT 648) – NZ 42 – NZ 43 – NZ 45
– NZ 48**

Origin Energy Resources NZ Ltd
NI 79/2007

NZ 89(T)/07 NEW ZEALAND – North Island – West Coast – Tasman Sea – Manukau to Kawhia – Seismic Survey.

1. Until the end of May 2007 the *SRV Pacific Titan* will undertake 2D and 3D seismic work in an area bounded by the following coordinates:

36° 50'S.,	173° 35'E.
36° 50'S.,	174° 10'E.
37° 35'S.,	174° 35'E.
38° 00'S.,	174° 35'E.
38° 00'S.,	173° 35'E.
2. *SRV Pacific Titan* will be deploying streamers up to 6km long and is restricted in its ability to manoeuvre.
3. The *MV Star Keys* (call sign 62549) will act as the support vessel to the *SRV Pacific Titan*.
4. All vessels are requested to pass at least 6NM clear of the *SRV Pacific Titan*.
5. *SRV Pacific Titan* (call sign 9V5935) will be monitoring VHF channel 16.
6. Mariners are requested to exercise caution when navigating in these areas.

Charts temporarily affected – NZ 21 (INT 641) – NZ 23 (INT 640) – NZ 42 – NZ 43

Origin Energy Resources NZ Ltd
NI 80/2007

NZ 90(T)/07 NEW ZEALAND – South Island – North Coast – Tasman Bay – Buoys.

Former Notice – NZ 237(T)/06 is cancelled.

Cancel this notice on receipt.

Charts formerly affected – NZ 48 – NZ 61 – NZ 614

Tasman District Council
NI 74/2007

NZ 91(T)/07 NEW ZEALAND – South Island – East Coast – Banks Peninsula to Otago Peninsula – Seismic Surveys.

Former Notice – NZ 66(T)/07 is cancelled.

Cancel this notice on receipt.

Charts formerly affected – NZ 23 (INT 640) – NZ 25 (INT 648) – NZ 63 – NZ 64 – NZ 66 – NZ 632 – NZ 661

Origin Energy Resources NZ Ltd
NI 84/2007

III

CORRECTIONS TO NEW ZEALAND LIGHT LIST

(NZ NTM Edition No.8 dated 13 April 2007)

NEW ZEALAND NAUTICAL ALMANAC 2006/07 LIGHT LIST SECTION

Nil

IV

CORRECTIONS TO PUBLICATIONS

(NZ NTM Edition No.8 dated 13 April 2007)

AMENDMENTS TO ADMIRALTY SAILING DIRECTIONS

NP 9 Antarctic Pilot (2004 Edition)

**Southern Ocean - Heard and McDonald Islands
— Marine Reserve**

100

After Paragraph 2.189 3 Insert:

Protected area

2.189a

- 1* The territory of Heard Island and McDonald Islands (HIMI) is located within the HIMI Marine Reserve. Vessels may traverse the territorial sea in innocent passage but a permit is required to enter the territorial waters when pursuing other activities. Other restrictions on access and activities which are included in the HIMI Marine Reserve Management Plan, may apply.

The areas are shown on the chart.

Australian Chart 597

(HH. 510/420/03)

[BA 14/07]

NP 13 Australia Pilot Volume I (2005 Edition)

**Northern Territory - Darwin —
Light buoys established**

155

After Paragraph 4.122 3 line 4 Add:

LNG vessels. An alternative deep-water route for LNG vessels has been established passing between Light Buoys LNG 1 (starboard hand) and LNG 2 (port hand) (8¼ miles NW).

Darwin Port Corp NW2007/07

(A231357)

[BA 11/07]

NP 13 Australia Pilot Volume I (2005 Edition)

**South Australia - South Page —
Racon established**

375

After Paragraph 12.32 1 Insert:

2 **Racon:**

South Page Light - as above.

For further details see *Admiralty List of Radio Signals Volume 2*.

AMSA ATH 07/07

(A235049)

[BA 14/07]

NP 14 Australia Pilot Volume II (2004 Edition)

Victoria - Western Port — Beacons discontinued

127

Paragraph 5.26 5 lines 1-5 *Delete*

Toll Westernport

(A234604)

[BA 13/07]

IV

NP 15 Australia Pilot Volume III (2005 Edition)

Queensland - Brisbane — Controlling depths; under keel clearances

136

Paragraph 4.66 1 lines 1-5 including existing Section IV Notice Week 08/06 *Replace by:*

- 1 Moreton Bay Channels (2006):
North West Channel and Spitfire Channel have a maintained depth of 15.0 m.
Brisbane River Entrance Beacons to Fisherman Islands Swing Basin has a maintained depth of 14.0 m.
Main Channel (Light beacons M8 to M9) 10.0 m.
East Knoll Bypass Channel 6.9 m.
East Channel 15.0 m.
East Channel (Light Beacon E5 to Entrance Beacons) 14.7 m.

137

Paragraph 4.67 1 lines 5-8 *Replace by:*

The following minimum under-keel allowances are required (2006):

North West Channel 1.6 m; increased to 1.8 m for vessels of beam 35 m to 45 m, and 2.1 m for vessels of beam greater than 45 m.

Paragraph 4.67 2 *Replace by:*

- 2 Spitfire Channel 1.2 m for vessels of beam up to 45 m, and 1.5 m for vessels of beam greater than 45 m.
Main Channel (between Light-buoys M8 and M9) 1.8 m.
East Knoll Bypass Channel 1.4 m.
East Channel 1.2 m for vessels of beam up to 45 m, and 1.5 m for vessels of beam greater than 45 m.
E5 Light-beacon (East Channel) to Entrance Beacons 1.2 m for vessels of beam up to 45 m, and 1.5 m for vessels of beam greater than 45 m.
Brisbane River Entrance Beacons to Fisherman Island Swing Basin 1.0 m for vessels of beam up to 45 m, and 1.3 m for vessels of beam greater than 45 m.
Pelican Banks Reach to Hamilton Reach 0.6 m to 0.9 m, depending on draught and tide.

A minimum under-keel clearance of 0.3 m is required alongside all berths.

Australian Notice 21/1088T/06
(HH. 577/415/08)

[BA 11/07]

NP 15 Australia Pilot Volume III (2005 Edition)

Queensland - Gladstone — Pilot boarding places

165

Paragraph 5.167 1 lines 6-8 *Replace by:*

...and displays the usual signals. The boarding places for the port of Gladstone are:

Alpha: 23°51'0S 151°31'5E

Bravo: 23°51'9S 151°32'7E

Charlie: 23°53'0S 151°33'0E

Delta: 23°55'0S 151°31'0E

Gladstone Port Control will advise which pilot boarding place is to be used.

Queensland Notice 164P/07
(A234620)

[BA 14/07]

NP 51 New Zealand Pilot (2004 Edition)

South Island - Marlborough Sounds - Picton Harbour — Light

125

Paragraph 4.247 line 1 *Replace by:*

- 1 **Caution.** When large vessels are manoeuvring at Picton Wharves, a warning light (quick blue flash) is shown from Waitohi Wharf Head Light.

From a position clear NW of Picton Point (41°15'3S...

New Zealand Notice 03/34/07
(HH. 580/550/04)

[BA 12/07]

NP 61 Pacific Islands Pilot Volume II (2006 Edition)

Tarawa - Betio northwards — Wreck

451

Paragraph 16.79 3 line 3 *Replace by:*

...(16.75), and a 4 m (13 ft) wreck in the SW corner, is bounded by a line joining the following positions...

Ministry of Communication, Transport and Tourism Development, Betio
(HH. 593/410/03)

[BA 10/07]

IV

NP 62 Pacific Islands Pilot Volume III
(2006 Edition)

Polynésie Française - Tahiti - Passe de Taapuna
— Submarine pipeline

152

After Paragraph 6.92 s line 3 Insert:

Submarine pipeline. An outfall pipeline is laid through Passe de Taapuna from 17°36'·1S 149°36'·8W to 17°36'·2S 149°37'·6W.

French Notice 3/59/07
(HH. 595/440/03)

[BA 10/07]

(NI 71/2007)

NP 62 Pacific Islands Pilot Volume III
(2006 Edition)

Hawaiian Islands, Hawaii -
Keauhou Bay — Directions

268

Paragraph 11.115 2-3 Replace by:

- 2 **Directions.** From WSW the line of bearing 069° of Keauhou Bay Light (mast, 6 m in height) (19°34'N 155°58'W) leads towards the bay.

US Chart 19327
(HH. 613/405/04)

[BA 12/07]

V

NAVIGATIONAL WARNINGS

Navarea XIV warnings in force 11 April 2007

NAVAREA XIV

(South West Pacific)

- 049/06 SOUTH PACIFIC. VOLUNTARY SHIP REPORTING SYSTEM IN THE NEW ZEALAND SEARCH AND RESCUE AREA SOUTH OF 60° SOUTH
1. The New Zealand Search and Rescue authorities have established a voluntary ship reporting system for all vessels operating in the NZSAR region south of 60° south for the purposes of assisting the SAR authority in coordinating SAR operations in that area.
 2. Area covered: 60°S to the southern edge of the Ross Sea bounded by 163°E to 131°W.
 3. All vessels are requested to notify Taupo Maritime Radio on entry and departure into the area and are also encouraged to make daily position reports. Information provided will be used for SAR purposes only.
 4. Taupo Maritime Radio can be contacted on Inmarsat C 582 451 200 067, HF, email maritime@kordia.co.nz or 00 64 4 914 8333
- 005/07 SOUTH PACIFIC OCEAN. TONGA. VOLCANIC ACTIVITY. INT CHART 605
1. A new active volcanic island is reported in position 18 59S, 174 46W.
 2. Vessels advised to navigate with caution in this area.
- 007/07 SOUTH PACIFIC OCEAN. TONGA. VOLCANIC ACTIVITY. INT CHART 631
1. Volcanic activity reported in position 20 51.3S 175 33.1W
 2. Smoke visible on surface, no floating pumice reported.
- 010/07 SOUTH PACIFIC. FIJI LIGHTS. INT CHART 638
- Following light reported unlit: Navula Point K4706 17 53.2S 177 15.2E.

VI

CORRECTIONS TO ADMIRALTY LIST OF RADIO SIGNALS

(NZ NTM Edition No.8 dated 13 April 2007)

VOLUME 1, PART 1, NP 281(1), 2006/07

Published BA Wk 26/06

(Last Amendments: BA Weekly Edition No. 8 dated 22 February 2007)

GLOBAL COMMUNICATION NETWORKS

PAGE 3, INMARSAT C LAND EARTH STATION OPERATORS AND ACCESS CODES, STRATOS MOBILE NETWORKS.

Delete entry and replace by:

Stratos Mobile Networks	ex UK/New Zealand	102	002	302	202
	Netherlands/Australia	122	012	312	212

(former amendment 6/07)

Stratos Global (HH080/050/04 - E12) 10/07

[BA 10/07]

VOLUME 1, PART 2, NP 281(2), 2006/07

Published BA Wk 26/06

(Last Amendments: BA Weekly Edition No. 13 dated 29 March 2007)

GLOBAL COMMUNICATION NETWORKS

PAGE 3, INMARSAT C LAND EARTH STATION OPERATORS AND ACCESS CODES, STRATOS MOBILE NETWORKS.

Delete entry and replace by:

Stratos Mobile Networks	ex UK/New Zealand	102	002	302	202
	Netherlands/Australia	122	012	312	212

(former amendment 6/07)

Stratos Global (HH080/050/04 - E12) 10/07

[BA 10/07]

PAGE 49, AUSTRALIA, after COAST RADIO HF VOICE NETWORK.

Insert new entry:

TOWNSVILLE (GLOBAL LINK NETWORK)					
19°28'35S 147°13'75E					
+61(0)747 714210 Mobile: +61 418885489	+61(0)747 243060				
			E-MAIL: seabourne@ozemail.com.au		
Seabourne Electronics provides data services in partnership with the Global Link Network. Other GLN stations operate from the following locations: Kiel (Germany), Bern (Switzerland), Manila (Philippines), Buenos Aires (Argentina) Weihai (China) Washington (USA Pacific). Further stations are planned for Patagonia (Chile), Yerevan (Armenia), and other locations in Norway, South Africa and the USA.					

	Dial Frequency Rx	Dial Frequency Tx	Status/Hours
Data Service (HF)			
VZG420_1	8434.5	8394.5	H24
VZG420_2	12649	12547	
VZG420_3	16901	16783	

Global Link Network (HH080/021/19 - E40) 14/07

[BA 14/07]

