

NEW ZEALAND NOTICES TO MARINERS

Notices

NZ 188 – 196

© Crown Copyright 2007. All rights Reserved. Permission is not required to make analogue copies of these Notices but such copies are not to be sold.

CONTENTS

- I [Explanatory Notes.](#)
 - II [New Zealand Notices to Mariners.](#)
 - III [Corrections to New Zealand Light List.](#)
 - IV [Corrections to Sailing Directions and New Zealand Publications.](#)
 - V [Navigational Warnings. \(NAVAREA XIV\)](#)
 - VI [Corrections to Admiralty List of Radio Signals.](#)
-

New Zealand Notices to Mariners are the authority for correcting New Zealand charts within the New Zealand area of charting responsibility as shown in Notice No. 1.

Mariners are requested to immediately inform Land Information New Zealand, Private Box 5501 Wellington 6145, New Zealand Phone : 0800 665 463 or (04) 460-0110 Fax: (04) 460-0161 or e-mail: info@linz.govt.nz, of the discovery of new or suspected dangers to navigation, or shortcomings in charts and publications.

Changes or defects in aids to navigation should be reported to the Rescue Coordination Centre New Zealand (RCCNZ) via the nearest New Zealand Coastal Maritime Radio Station Phone : (04) 577-8030 Fax : (04) 577-8038 or (04) 577-8041 e-mail: rccnz@maritimenz.govt.nz.

Copies of these Notices can be obtained from Land Information New Zealand, Maritime New Zealand, Principal Chart Agents at the major ports of New Zealand and the Internet: <http://www.linz.govt.nz>

EXPLANATORY NOTES

Charts. The notices in Section II give instructions for the correction of charts. Geographical positions refer to the largest scale chart unless otherwise stated. They are normally given in degrees, minutes and decimals of a minute, but may occasionally quote seconds for convenience when plotting from the graduation of some older-style charts. Bearings are true reckoned clockwise from 000° to 359°; those relating to lights are given as seen by an observer from seaward. Symbols referred are those shown in publication *NZ 201*.

Alterations to depth contours, deletion of depths to make way for new detail, etc. are not mentioned unless they have some navigational significance.

Blocks or notes accompanying notices in Section II are placed after Section VI.

Temporary and Preliminary Notices. These are indicated by (T) or (P) after the notice number. A list of (T) and (P) Notices in force is published in the fortnightly Editions of Notices to Mariners. Charts are not corrected for them before issue; they should be corrected in pencil on receipt.

Light Lists. The detailed correction to the Light List is given in Section III and may not be published in the same edition as the chart correcting notice. The entire entry for each light is printed, and an asterisk (*) is shown under the column which contains an amendment. In the case of a new light, an asterisk (*) appears under all the columns. New and extensively altered entries are intended to be pasted in. It is recommended that a manuscript entry be made for all shorter corrections.

It is emphasized that the List of Lights is the authority for lights and that many alterations, especially those of a temporary but operational nature, may only be promulgated as corrections to the List of Lights.

Radio Signals. When radio signals are affected by a notice the Admiralty List of Radio Signals reference number is quoted. The detailed correction to the List of Radio Signals is given in Section VI and may be published in a later edition than the chart correcting notice.

Sailing Directions Corrections to Sailing Directions are given in Section IV. It is recommended that such corrections be kept together in a file with the latest list of those in force on top. The file can then be consulted when using the parent book to see if any notices affecting the area under consideration are extant.

Corrections should not be pasted into the parent book or Supplement as corrections may be issued between closing date and issue of a new Supplement. These will be embodied in the text of the following Supplement. A summary of corrections in force will be issued in Section IV of the Fortnightly Edition at monthly intervals.

New Zealand Publications. Corrections to New Zealand Publications are given in Section IV.

Correction of Charts and Publications by the User. New Zealand Notices to Mariners contain important information and should be used to keep the specified charts and books up to date.

THE USE OF CHARTS AND ASSOCIATED PUBLICATIONS

Reliance on Charts and Associated Publications. While every effort is made to ensure the accuracy of the information on New Zealand charts and other publications, it should be appreciated that it may not always be complete and up to date. The mariner must be the final judge of the reliance to be placed on the information given, bearing in mind their particular circumstances, local pilotage guidance and the judicious use of available navigational aids.

Charts. Charts should be used with prudence: there are areas where the source data are old, incomplete or of poor quality. The mariner should use the largest scale appropriate for his particular purpose; apart from being the most detailed, the larger scales are usually corrected first. When extensive new information (such as a new hydrographic survey) is received, some months may elapse before it can be fully incorporated in published charts. On small scale charts of ocean areas where hydrographic information is, in many cases, still sparse, charted shoals may be in error as regards position, least depth and extent. Undiscovered dangers may exist, particularly away from well-established routes.

Further guidance. The Mariner's Handbook (NP 100) gives a fuller explanation of the limitations of charts. All users should study it in their own interest.

II

NUMERICAL INDEX OF CHARTS AFFECTED
(NZ NTM Edition No.20 dated 28 September 2007)

NZ Chart No.	NZ Notices	INT Chart No.	Notices
NZ 21	NZ 195(T), 196(T)	INT 641	NZ 195(T), 196(T)
NZ 23	NZ 193(T), 195(T), 196(T)	INT 640	NZ 193(T), 195(T), 196(T)
NZ 25	NZ 193(T), 196(T)	INT 648	NZ 193(T), 196(T)
NZ 43	NZ 196(T)		
NZ 45	NZ 193(T), 196(T)		
NZ 48	NZ 193(T), 195(T), 196(T)		
NZ 63	NZ 194(T)		
NZ 64	NZ 194(T)		
NZ 532	NZ 190		
NZ 885	NZ 188		
NZ 5324	NZ 190		
NZ 5325	NZ 190		
NZ 9558	NZ 191		
NZ 14600	NZ 188	INT 600	NZ 188
NZ 14601	NZ 188	INT 601	NZ 188
NZ 14602	NZ 188	INT 602	NZ 188
NZ 14605	NZ 188	INT 605	NZ 188
NZ 14606	NZ 188	INT 606	NZ 188
NZ 14901	NZ 188	INT 9001	NZ 188
NZ 14902	NZ 188	INT 9002	NZ 188

NEW ZEALAND TEMPORARY AND PRELIMINARY NOTICES IN FORCE

(NZ NTM Edition No.20 dated 28 September 2007)

NZ Notice	T/P	Charts Affected		Locality and Subject
		NZ	INT	
133/01	T	6612		Otago Hr.: Shoaling
180/03	T	6154		Picton Hr.: Shoal Depths.
129/04	T	52, 53, 522, 5227		Hauraki Gulf: Dredging Operations
194/04	P	46, 48, 61, 463, 614, 6151, 6152, 6153, 6154		Marlborough Sounds – Use of Automated Navigation Systems.
54/05	T	5322		Auckland Hr. : Works in Progress
110/05	T	8248		Tonga : Light Unlit
159/05	T	5322		Auckland Hr. Bridge: Precautionary Area.
161/05	P	4633, 4634		Wellington Hr.: Navigation Safety Bylaw
173/05	T	53, 54, 531, 534, 5318		Whitianga Hr. : Sandbar
219/05	T	614		Motueka River : Current Meter
237/05	T	5214, 5215		Whangarei Hr.: Light : Works in Progress
25/06	P	5214, 5215		Whangarei Hr.: Lights
36/06	T	5215		Whangarei Hr.: Shoaling
104/06	T	4314, 4315		Manukau Hr.: Light Destroyed, Light Buoy
141/06	T	42, 4212		Hokianga Hr. Entrance: Waverider Buoy
176/06	T	23, 26, 56, 14060, 14600	60, 600, 640	N. Island, E. Coast: Scientific Instruments
177/06	T			Indian Ocean: Operation 'Enduring Freedom'
186/06	T	661		Approaches to Otago Hr.: Works in Progress
205/06	T	532, 5324		Tamaki Strait: Motuihe Is.: E. Cardinal Lt Beacon
213/06	P	6153, 6154		Picton Hr.: Lights
219/06	T	14051, 14052, 14060, 14061, 14604, 14605, 14606, 14607, 14629	51, 52, 60, 61, 604, 605, 606, 607, 629	North, South Pacific Ocean: Buoys
234/06	T	56, 561		Hawke Bay: Research Light-Buoy
244/06	T	23, 25, 63, 64	640, 648	Lyttelton Hr.: Waverider Buoy
30/07	T	54, 542		Bay of Plenty: Research Instruments.
37/07	T	53, 532, 533, 5327		Firth of Thames: Moorings, Research Instruments
40/07	T	23, 26, 46, 58, 62	640	Cape Palliser SE: Scientific Instruments
56/07	T	73		S. Island, W. Coast, Jackson Bay: Dolphin Monitoring Sensors
63/07	T	4633		Wellington Harbour: Race Marker Buoys
80/07	T	845, 14630, 14631	630, 631	Niue Is.: Navigational Aids, Lights
97/07	T	45, 48		S. Taranaki Bight: Waverider Buoy
100/07	P	4265		Kaipara Hr.: Lights, Buoys and Beacons
117/07	T	5215		Whangarei Hr.: Beacon
127/07	P	45, 48		S. Taranaki Bight: Platform Installation
133/07	T	56, 561		Napier, Awatoto: Current Meter
135/07	T	43, 443		N. Taranaki Bight, Waitara Northwards: Drilling Operations
143/07	T	48, 61		S. Island, N. Coast, Golden Bay: Buoy
144/07	T	6321		Lyttelton Harbour: Works in Progress
152/07	T			Maritime Safety Broadcasts
156/07	T	632, 6321		Lyttelton Harbour: Buoys, Lights
158/07	T	6821		Bluff Harbour: Beacon, Buoy
162/07	T	5214, 5215		Whangarei Hr.: Beacon
165/07	P	615, 6153, 6154		Marlborough Sounds, Tory Channel: Marine Safety Broadcast
172/07	T	51, 512, 5111, 5114		Doubtless Bay, Mangonui Hr.: Light
175/07	T	4314		Manukau Hr. Entrance: South West Channel
183/07	T	4633, 4634		Wellington Harbour: Racing Buoys
193/07	T	23, 25, 45, 48	640, 648	S. Taranaki Bight: Waverider Buoy
194/07	T	63, 64		Lyttelton Hr.: Works in Progress
196/07	T	21, 23, 25, 43, 45, 48	640, 641, 648	Cape Egmont Westwards: Drilling Operations

NZ 188/07 NEW ZEALAND PUBLICATIONS – (1) New Charts Published.

<i>Chart</i>	<i>Published Date</i>	<i>Title and other remarks</i>	<i>Scale 1:</i>	<i>Page of 14th. Edition NZ 202 26 & 27</i>
NZ 14901 (INT 9001)	July 07	Cape Royds to Pram Point <i>New Chart compiled from existing and new survey data.</i> Chart Limits: 77° 22'.80S – 77° 54'.50S 165° 37'.00E – 167° 12'.00E	60 000	
NZ 14902 (INT 9002)	July 07	McMurdo Station and Scott Base <i>New Chart compiled from existing and new survey data.</i> Chart Limits: 77° 50'.35S – 77° 52'.05S 166° 34'.10E – 166° 46'.70E	5 000	26 & 27

– (2) New Editions Published.

<i>Chart</i>	<i>Published Date</i>	<i>Title and other remarks</i>	<i>Scale 1:</i>	<i>Page of 14th. Edition NZ 202 6 & 7</i>
NZ 14600 (INT 600)	July 07	New Zealand including Norfolk Island and Campbell Island / Motu Ihupuku <i>New Edition including updated EEZ.</i> Chart Limits: 28° 05'.00S – 53° 00'.00S 164° 00'.00E – 174° 34'.30W	3 500 000	
NZ 14601 (INT 601)	July 07	Tasman Sea, New Zealand to S.E. Australia <i>New Edition including updated EEZ.</i> Chart Limits: 33° 30'.00S – 49° 28'.68S 142° 30'.00E – 175° 50'.15E	3 500 000	6 & 7
NZ 14602 (INT 602)	July 07	Tasman and Coral Seas, Australia to Northern New Zealand and Fiji <i>New Edition including updated EEZ.</i> Chart Limits: 16° 00'.00S – 35° 17'.24S 146° 40'.00E – 180° 00'.00E	3 500 000	6 & 7
NZ 14605 (INT 605)	July 07	New Zealand to Fiji and Samoa Islands <i>New Edition including updated EEZ.</i> Chart Limits: 7° 30'.00S – 37° 55'.40S 171° 34'.30E – 167° 00'.00W	3 500 000	6 & 7

(continued)

(continued)

NZ 14606 (INT 606)	July 07	Tonga to Archipel Des Tuamotu <i>New Edition including updated EEZ.</i> Chart Limits: 7° 30'.00S – 27° 54'.50S 175° 20'.00W – 142° 00'.00W	3 500 000	6 & 7
NZ 885	July 07	Tokelau Atafu Nukunonu Fakaofu <i>New Edition comprising four plans, compiled from existing and new survey data.</i> Chart Limits: Tokelau 7° 18'.00S – 10° 10'.00S 173° 15'.00W – 170° 18'.50W Atafu 8° 26'.50S – 8° 41'.70S 172° 36'.70W – 172° 21'.70W Nukunonu 9° 00'.77S – 9° 18'.43S 171° 57'.50W – 171° 40'.50W Fakaofu 9° 16'.10S – 9° 31'.75S 171° 23'.00W – 171° 06'.00W	500 000 100 000 100 000 100 000	8 & 9

– (3) Charts Permanently Withdrawn.

<i>Chart</i>	<i>On Publication of New Chart/New Edition</i>	<i>Date</i>
NZ 885	NZ 885	July 07
NZ 14600 (INT 600)	NZ 14600 (INT 600)	July 07
NZ 14601 (INT 601)	NZ 14601 (INT 601)	July 07
NZ 14602 (INT 602)	NZ 14602 (INT 602)	July 07
NZ 14605 (INT 605)	NZ 14605 (INT 605)	July 07
NZ 14606 (INT 606)	NZ 14606 (INT 606)	July 07

NZ 189/07 ADMIRALTY PUBLICATIONS – New Edition Published.

<i>NP No.</i>	<i>Title</i>	<i>Date</i>	<i>Remarks</i>
NP 286(4)	Admiralty List of Radio Signals. Pilot Services, Vessel Traffic Services and Port Operations. Part 4: Asia and Australasia Edition 2007/08	30/08/07	Corrections accrued whilst the publication was in the press, from Week 27/07 to Week 35/07 inclusive, along with new information are issued in Section VI of the Weekly Editions of Admiralty Notices to Mariners commencing with this weeks edition. The 2006/07 edition of NP 286 (4) is thereby cancelled and replaced by the 2007/08 New Edition.

UKHO WK 35/07
NI 225/2007

NZ 190/07 NEW ZEALAND – North Island – East Coast – Auckland – Tamaki Strait – Quarantine Anchorage.

Chart NZ 532 [168/07]

Delete	quarantine anchorage symbol	36° 49'.22S.,	174° 55'.72E.
	quarantine anchorage limit, joining	36° 50'.69S.,	174° 54'.23E.
		36° 49'.32S.,	174° 56'.36E.
		36° 47'.85S.,	174° 54'.74E.
		36° 47'.91S.,	174° 53'.68E.
		36° 49'.72S.,	174° 53'.34E.
	quarantine anchorage limit, joining	36° 50'.16S.,	174° 53'.48E.
		36° 50'.77S.,	174° 54'.03E.

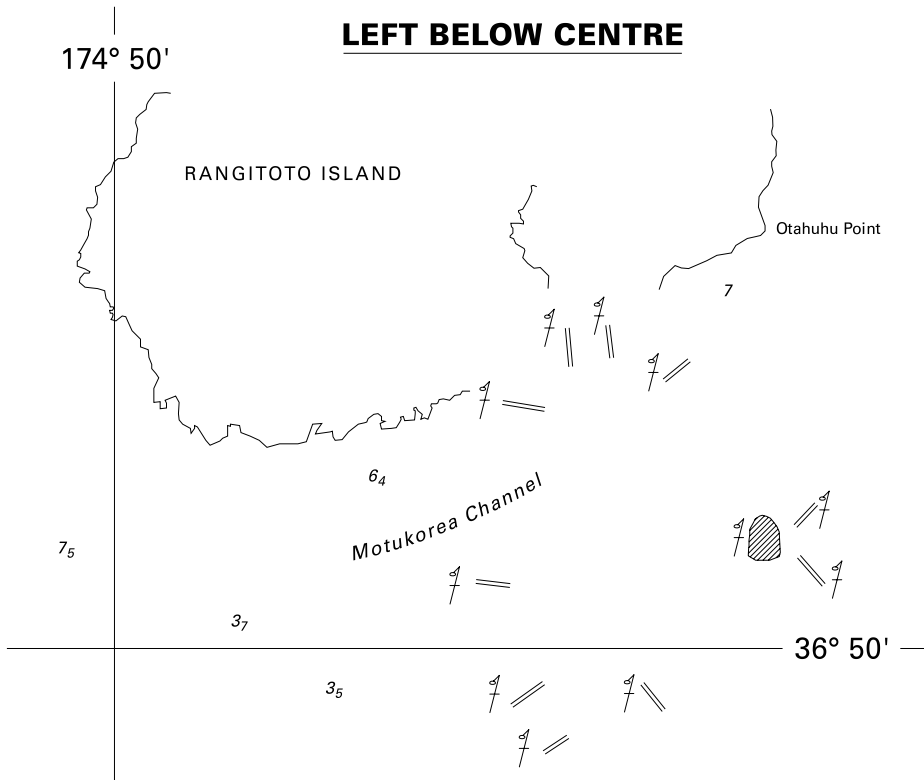
Chart NZ 5324 [149/07]

Delete	quarantine anchorage symbol	36° 48'.95S.,	174° 55'.48E.
	quarantine anchorage limit, joining	36° 50'.77S.,	174° 54'.14E.
		36° 49'.32S.,	174° 56'.39E.
		36° 47'.83S.,	174° 54'.72E.
		36° 47'.92S.,	174° 53'.71E.
	quarantine anchorage limit, joining	36° 48'.00S.,	174° 53'.63E.
		36° 49'.65S.,	174° 53'.36E.
	quarantine anchorage limit, joining	36° 50'.16S.,	174° 53'.50E.
		36° 50'.79S.,	174° 54'.07E.

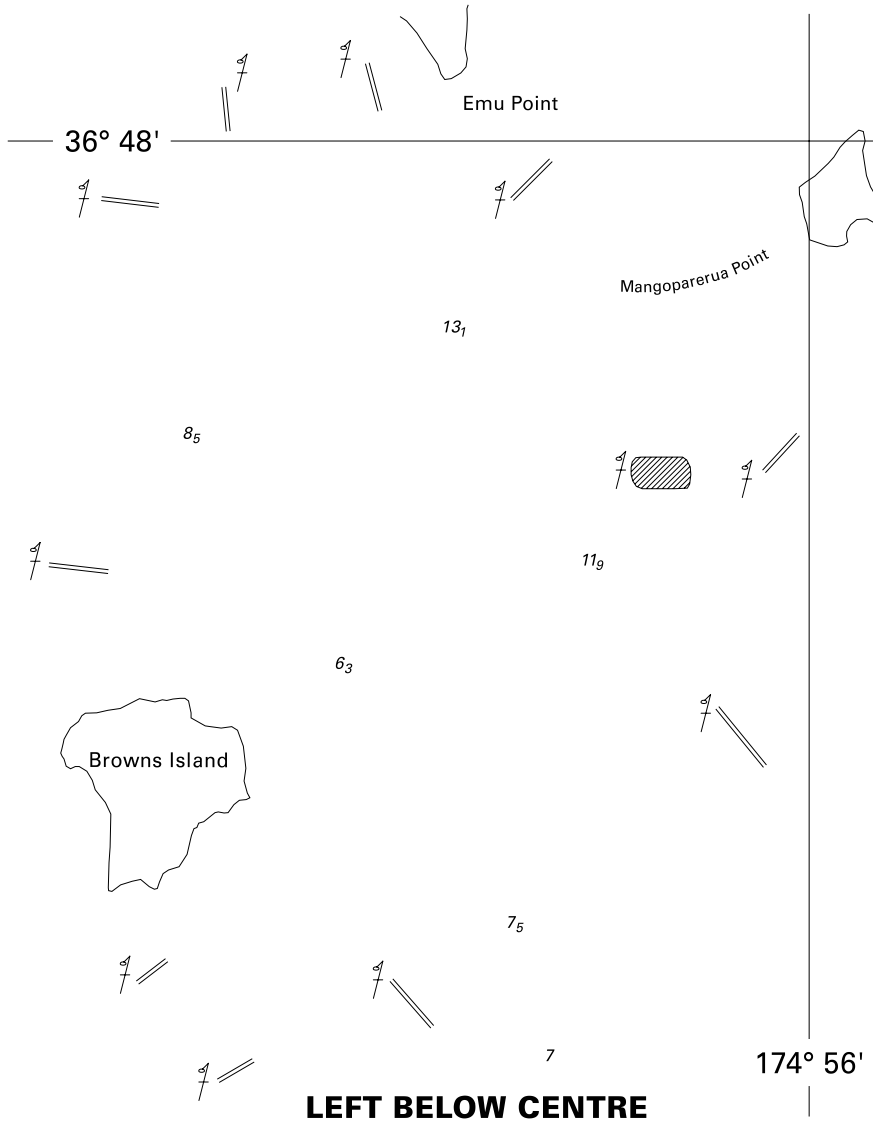
Chart NZ 5325 [150/07]

Delete	quarantine anchorage limit, joining	36° 49'.40S.,	174° 53'.41E.
		36° 49'.70S.,	174° 53'.35E.
	quarantine anchorage limit, joining	36° 50'.15S.,	174° 53'.51E.
		36° 50'.78S.,	174° 54'.09E.
		36° 49'.88S.,	174° 55'.50E.

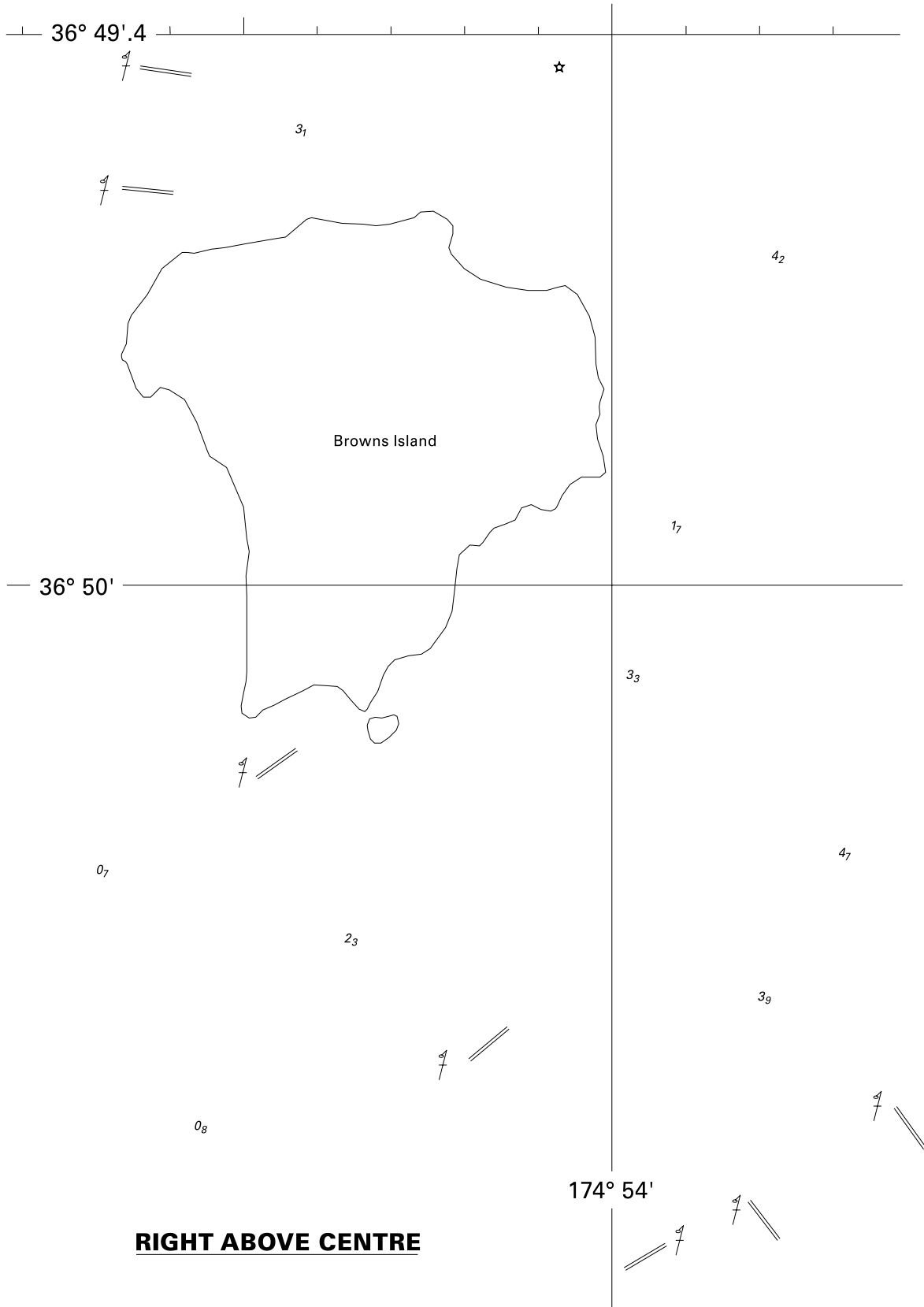
Auckland Regional Council
 NI 222/2007



<i>Issued as a guide to chart correction.</i>		<i>Use in conjunction with the appropriate NZ Notice to Mariners.</i>	
LAST CORRECTION	NZ NTM No.	CHART No.	
NZ 168/07	NZ 190/07	NZ 532	

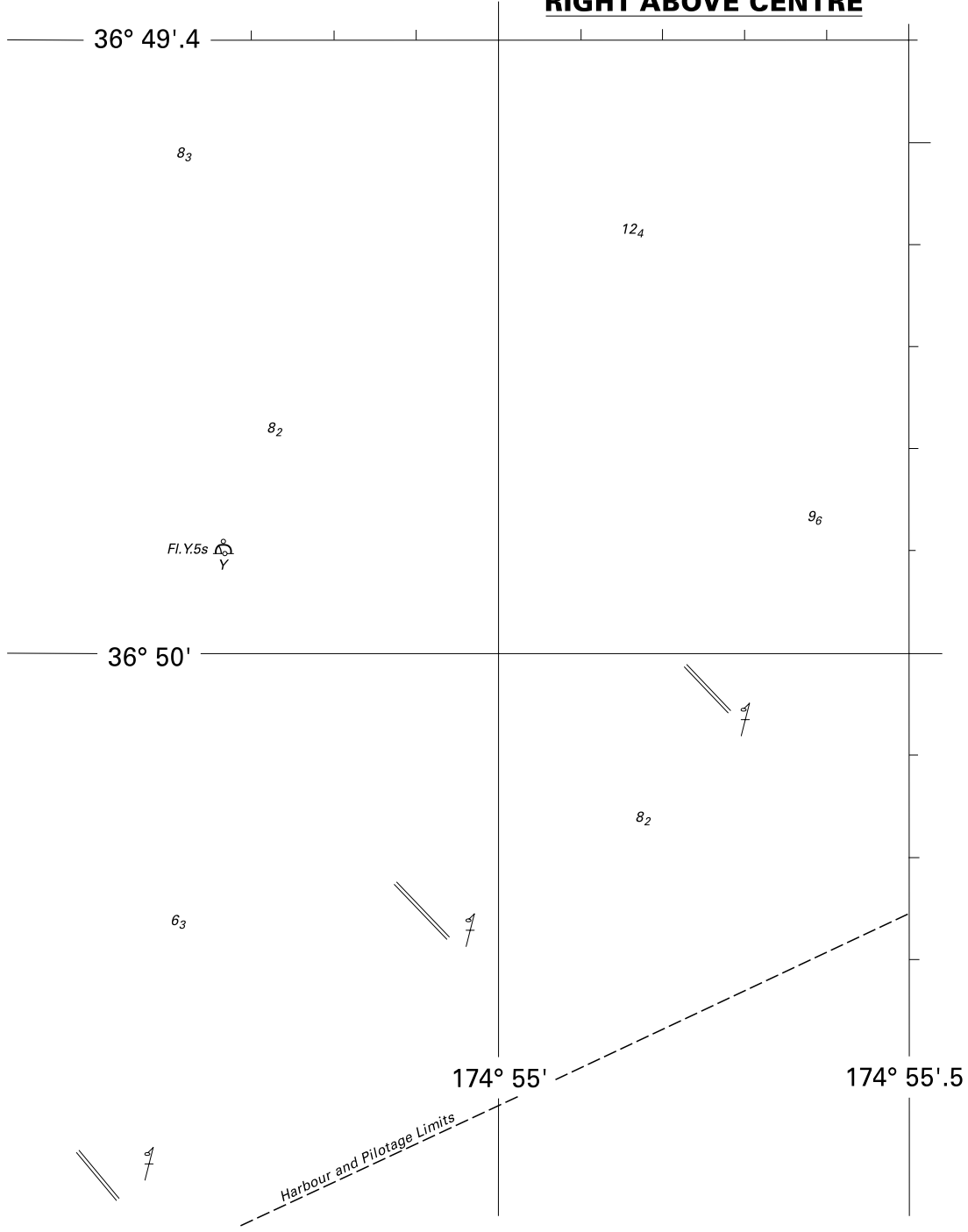


<i>Issued as a guide to chart correction.</i>		<i>Use in conjunction with the appropriate NZ Notice to Mariners.,</i>	
LAST CORRECTION	NZ NTM No.	CHART No.	
NZ 149/07	NZ 190/07	NZ 5324	



<i>Issued as a guide to chart correction.</i>		<i>Use in conjunction with the appropriate NZ Notice to Mariners.</i>
LAST CORRECTION	NZ NTM No.	CHART No.
NZ 150/07	NZ 190/07	NZ 5325

RIGHT ABOVE CENTRE



<i>Issued as a guide to chart correction.</i>		<i>Use in conjunction with the appropriate NZ Notice to Mariners.</i>	
LAST CORRECTION	NZ NTM No.	CHART No.	
NZ 150/07	NZ 190/07	NZ 5325	

NZ 191/07 SOUTH PACIFIC OCEAN – Cook Islands – Rarotonga – Avarua and Avatiu Harbours – Leading Lights.

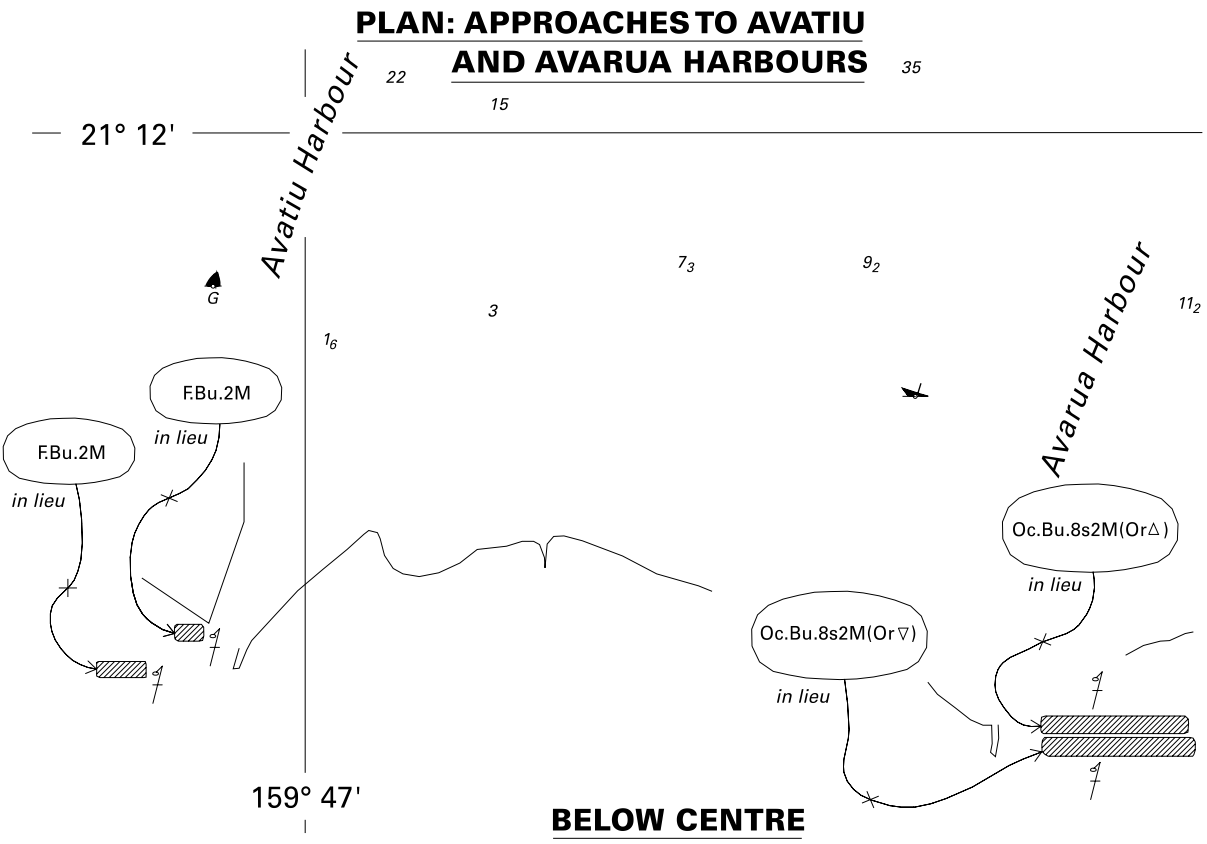
Chart NZ 9558 (plan, Approaches to Avatiu and Avarua Harbours) [160/03]

Amend	light to, F.Bu.2M	21° 12'.33S.,	159° 47'.10W.
	light to, F.Bu.2M	21° 12'.35S.,	159° 47'.11W.
	light to, Oc.Bu.8s2M(Or△)	21° 12'.38S.,	159° 46'.50W.
	light to, Oc.Bu.8s2M(Or▽)	21° 12'.40S.,	159° 46'.50W.

Chart NZ 9558 (plan, Avatiu Harbour)

Insert	the accompanying block, incorporating changes to the leading lights in Avatiu Harbour, centred on	21° 12'.316S.,	159° 47'.107W.
--------	---	----------------	----------------

Cook Islands Harbourmaster
 UKHO Light List K4552, 4552.1, 4559, 4559.1
 NI 199/2007



<i>Issued as a guide to chart correction.</i>		<i>Use in conjunction with the appropriate NZ Notice to Mariners.</i>	
LAST CORRECTION	NZ NTM No.	CHART No.	
NZ 160/03	NZ 191/07	NZ 9558	

NZ 192/07 NEW ZEALAND PUBLICATIONS – Cumulative List of New Zealand Notices to Mariners.

The Cumulative List of New Zealand Notices to Mariners, corrected up to Edition 20/07 dated 28 September 2007 is attached as an accompanying supplement to this Edition.

Land Information New Zealand
NI 227/2007

**NZ 193(T)/07 NEW ZEALAND – North Island – South Coast – South Taranaki Bight Westwards
Waverider Buoy.**

1. A waverider buoy, Fl(5).Y.20s, has been laid in position 39° 59'.44S., 173° 16'.86E until August 2008.
2. Mariners are advised to exercise caution and not approach within 500m of the buoy.

Charts temporarily affected – NZ 23 (INT 640) – NZ 25 (INT 648) – NZ 45 – NZ 48

MetOcean Solutions Ltd
NI 178/2007

NZ 194(T)/07 NEW ZEALAND – South Island – East Coast – Lyttelton Harbour – Works in Progress.

1. The construction of an ocean outfall pipeline has commenced north of Lyttelton Harbour and will continue until May 2008. The construction area is bounded by the following co-ordinates:
43° 31'.7S., 172° 45'.0E.
43° 31'.7S., 172° 46'.8E.
43° 31'.3S., 172° 46'.8E.
43° 31'.3S., 172° 45'.0E.

2. All vessels should pass 2NM clear of the area.

Charts temporarily affected – NZ 63 – NZ 64

McConnell Dowell
NI 223/2007

**NZ 195(T)/07 NEW ZEALAND – North Island – West Coast – Cape Egmont Westwards –
Drilling Operations Completed.**

Former notice – NZ 186(T)/07 is cancelled.

Cancel this notice on receipt.

Charts formerly affected – NZ 21 (INT 641) – NZ 23 (INT 640) – NZ 48

Australian Worldwide Exploration Ltd
NI 231/2007

**NZ 196(T)/07 NEW ZEALAND – North Island – West Coast – Cape Egmont Westwards –
Drilling Operations.**

1. From the 29th September 2007 until further notice, the semi-submersible drilling rig, *Ocean Patriot*, will be undertaking drilling operations in the following position:
Kopuwai-1 39° 18'.2S., 173° 08'.6E.
2. Two anchor-handling vessels, *Far Grip* (call sign LGRO) and *Pacific Wrangler* (call sign 9V6218) will assist in operations and act as supply vessels for the duration of the drilling.
3. The *Ocean Patriot* (call sign V7EL6) will monitor VHF channel 16.
4. All vessels should pass 5NM clear of the rig.

Charts temporarily affected – NZ 21 (INT 641) – NZ 23 (INT 640) – NZ 25 (INT 648) – NZ 43 – NZ 45 – NZ 48

Australian Worldwide Exploration Ltd
NI 230/2007

III

CORRECTIONS TO NEW ZEALAND LIGHT LIST
(NZ NTM Edition No.20 dated 28 September 2007)

NEW ZEALAND NAUTICAL ALMANAC 2007/08
LIGHT LIST SECTION

Nil

IV

CORRECTIONS TO PUBLICATIONS
(NZ NTM Edition No.20 dated 28 September 2007)

CORRECTIONS TO NEW ZEALAND CHART CATALOGUE (NZ 202)
14th. Edition

Page 7

PACIFIC OCEAN

NZ 14600 (INT 600)	<i>Amend</i>	Title to New Zealand including Norfolk Island and Campbell Island / Motu Ihupuku
	<i>Amend</i>	New Edition date to 7/2007
NZ 14601 (INT 601)	<i>Amend</i>	New Edition date to 7/2007
NZ 14602 (INT 602)	<i>Amend</i>	New Edition date to 7/2007
NZ 14605 (INT 605)	<i>Amend</i>	New Edition date to 7/2007
NZ 14606 (INT 606)	<i>Amend</i>	New Edition date to 7/2007

Page 9

SOUTH WEST PACIFIC OCEAN

NZ 885	<i>Amend</i>	New Edition date to 7/2007
---------------	--------------	----------------------------

Page 27

SOUTHERN OCEAN and ROSS DEPENDENCY

Insert

14901 (INT 9001)	Cape Royds to Pram Point.....	60 000	7/2007
14902 (INT 9002)	McMurdo Station and Scott Base.....	5 000	7/2007

Page 30

NUMERICAL CHART LIST

Small Scale International Charts

Chart No.	Scale 1:	Page
	<i>Insert</i>	
NZ 14901 (INT 9001)	60 000	27
	<i>Insert</i>	
NZ 14902 (INT 9002)	5 000	27

(NI 228/2007)

V

NAVIGATIONAL WARNINGS

Navarea XIV warnings in force 26 September 2007

NAVAREA XIV

(South West Pacific)

- 010/07 SOUTH PACIFIC. FIJI LIGHTS. INT CHART 638
- Following light reported unlit: Navula Point K4706 17 53.2S 177 15.2E.
- 026/07 SOUTH PACIFIC. MARQUESIAN ARCHIPELAGO - TUAMOTU ARCHIPELAGO - GAMBIER ARCHIPELAGO. SOUTHERN ISLANDS. INT CHART 607
1. Since 080100 UTC JUN 07 local radio station, Mahina Radio, is unable to transmit on channel 2182 KHz.
 2. Channel 8291 KHz is operational for watch distress alerts.
 3. Meteorological forecast and navigational warnings are broadcast on channels 2620 KHz and 8803 KHz at scheduled times. There is no alert broadcast on 2182 KHz.
 4. Navigators are requested to report all distress alerts to Maritime Rescue Coordination Center Papeete via MRCC Papeete telephone 689 465316, Inmarsat-C 582 422 799 192, email mrccpapeete@mail.pf
- 047/07 SOUTHERN OCEAN. CHATHAM ISLANDS. ICEBERGS. INT CHART 61
1. Large iceberg reported in vicinity 46 59S 175 18W approximately 180NM south of the Chatham Islands at 212300 UTC SEP 07.
 2. First iceberg reported in vicinity 48 49S 169 42W approximately 400NM south east of the Chatham Islands.
 3. Cancel this message 260030 UTC SEP 07.
- 048/07 SOUTHERN OCEAN. CHATHAM ISLANDS. ICEBERGS. INT CHART 61
1. Bergy bits reported in vicinity 45 50S 175 50W approximately 85NM south of the Chatham Islands at 250248 UTC SEP 07.
 2. Cancel this message 300000 UTC SEP 07.
- 050/07 SOUTH PACIFIC. FRENCH POLYNESIA. ARCHIPEL DES TUAMOTU. FALLING ROCKET ELEMENTS. INT CHART 607
1. Impact area dangerous to navigation from rocket elements falling between 03 OCT 07 and 24 OCT 07 from 0200 to 0500 UTC.
 2. Danger area bounded by:
19 00S 132 00W, 16 00S 120 00W
18 00S 120 00W, 21 00S 132 00W
 3. Cancel this message 240530 UTC OCT 07.
-

VI

CORRECTIONS TO ADMIRALTY LIST OF RADIO SIGNALS
(NZ NTM Edition No.20 dated 28 September 2007)

Nil

To accompany New Zealand Notice to Mariners No.191/07. Image size (mm) 87.3 x 88.0

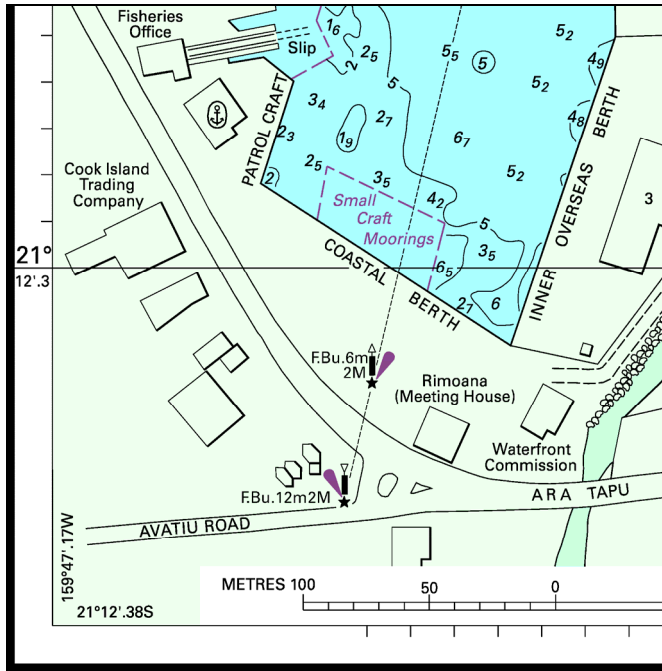


Chart No. NZ 9558



CUMULATIVE LIST OF NEW ZEALAND NOTICES TO MARINERS

September 2007

GENERAL INFORMATION

This list records the date of issue of the current edition of each chart and of subsequent relevant New Zealand Notices to Mariners up to and including **Edition No. 20 of 28 September 2007**. Users of this list are reminded that the authoritative source for information concerning current editions of New Zealand charts and the corrections that affect them are the Editions of New Zealand Notices to Mariners.

THE CURRENT EDITION OF A CHART

When a new chart or new edition is published the date of publication is shown in the bottom outside margin of the chart. A new edition of a chart, on being published and issued as notified by a Notice to Mariners, becomes the current edition and the previous edition is superseded. Withdrawn charts and superseded editions should not be used for navigation; nor should current editions that have not been corrected for relevant Notices to Mariners.

Published by Land Information New Zealand
For further information contact LINZ Hydrographic Services
Land Information New Zealand, P.O. Box 5501
Wellington 6145, New Zealand
Phone: 0800 665 463 or (04) 460 0110
Fax: (04) 460 0161
E-mail: info@linz.govt.nz
Internet site: <http://www.linz.govt.nz>

NZ 21 (INT 641)	Apr 2005	2005-163-248, 2006-23, 2007-26-94-131-180
NZ 22 (INT 639)	Apr 2005	
NZ 23 (INT 640)	Apr 2005	2005-163, 2006-23-32, 2007-26-94-104-131-180
NZ 24	Apr 2005	
NZ 25 (INT 648)	Apr 2005	2005-163, 2006-34-114 -145, 2007-26-94-104-131-180
NZ 26	Apr 2005	2005-163, 2006-32
NZ 27	Apr 2005	
NZ 28	Apr 2005	
NZ 29	Apr 2005	2005-206
NZ 31	Apr 2005	
NZ 41	Jan 2003	2003-119, 2004-219, 2005-135
NZ 42	Apr 2001	2003-119, 2004-219, 2005-135
NZ 43	Jun 1999	1999-326, 2000-201-208, 2002-118, 2003-143, 2004-101, 2007-69-94-119-120-131
NZ 45	Jul 2001	2003-114-149, 2004-100, 2006-128-160, 2007-26-94-105-124-180
NZ 46	Jul 2000	2000-365-417-420, 2001-153-204-205, 2002-104, 2003-57-131-149-175, 2004-29-53-80, 2005-49-127-245
NZ 48	Apr 2000	2000-417-420, 2001-167-195-241, 2003-29-114-131-143-149, 2004-108-109-126, 2006-128-160, 2007-26-53-94-119-124-131-180
NZ 51	Apr 2001	2003-119, 2004-219, 2005-135, 2007-45
NZ 52	Jul 2004	2005-167, 2006-23
NZ 53	Mar 2002	2002-67-93-135, 2003-66-141-155-172, 2004-57-70-106-164, 2005-133-167-189, 2006-199-215, 2007-83-168
NZ 54	Jul 1997	1997-333, 1998-109-122-123-233, 2000-220-338-402, 2002-25-94-135, 2003-142, 2005-95, 2007-83
NZ 55	Apr 1998	2000-176-253, 2002-94, 2004-47-88
NZ 56	Sep 2001	2006-32-79-227, 2007-25
NZ 57	Sep 2001	
NZ 58	Sep 2001	
NZ 61	Apr 1999	1999-452, 2000-420, 2001-153-195-241-248, 2002-143, 2003-29-120, 2004-89-109-207, 2006-43-161, 2007-53
NZ 62	Apr 1998	1998-255-355, 1999-90-284, 2001-204, 2002-104, 2003-175, 2004-29-53, 2007-178
NZ 63	Apr 1998	1998-255-355-402, 1999-90-200-284-302, 2000-275-296-403, 2002-104
NZ 64	Mar 2003	2006-34-53 -145-229-240
NZ 66	Jan 2003	2006-34-53-114 -145
NZ 68	Jan 2003	2004-208, 2006-114-172-173, 2007-170
NZ 69	Jul 2001	2002-68-69, 2003-91, 2004-208, 2006-172-173
NZ 71	Mar 2002	2005-63-113
NZ 72	Mar 2002	
NZ 73	Mar 2002	
NZ 76	Jul 2001	2003-111
NZ 82 (T 82)	Oct 1993	1994-77-92-182-222-228-298-353, 1995-20-34-35-118-191-214-220-231-236, 1996-278, 1997-97, 1998-409, 1999-327-418, 2000-51, 2002-27, 2005-103, 2007-140
NZ 86	Oct 1993	1994-36, 1995-225, 1998-32-304-305-325, 1999-364, 2003-97
NZ 93	Oct 1997	2002-72-73
NZ 222	Apr 1994	1994-209, 1995-147-161, 1996 -148
NZ 223 F	Apr 1999	2000-80-259-268, 2003-132-156, 2005-248
NZ 224 F	Apr 1999	2006-114-145
NZ 232	Jun 2006	
NZ 252	Oct 2006	
NZ 268	Oct 1995	1996-165-343, 1997-112-132-396, 1999-137-252, 2001-197, 2002-70, 2004-111
NZ 286	Apr 1992	1994-158-209-321, 2000-21
NZ 443	Jul 2001	2002-118, 2003-143, 2004-101, 2006-128-160, 2007-26-94-105-119-131-138-180
NZ 463	Jul 2000	2000-365, 2001-205, 2002-79-104, 2003-57-131, 2004-53-80-90, 2005-49-127-245, 2006-113-127, 2007-118
NZ 512	Dec 1999	2001-107-214, 2006-66, 2007-45
NZ 521	Jul 2004	2004-217, 2006-23

NZ 522	Sep 1999	2000-116-260-390, 2001- 239, 2003-141, 2004-46-106-155, 2005-47-167, 2007-167
NZ 531	Dec 1999	2000-437, 2001-237, 2002-135, 2003-141, 2004-78. 2005-190
NZ 532	Sep 1999	2000-104-339-347-390-436-437, 2001-36-177-181, 2002-32-49-78-93, 2003-28-66-148-155-172, 2004-107-156-164, 2005-47-101-133-189-232-244, 2006-96-111-126-198-199-215-239, 2007-24-168-190
NZ 533	Dec 1999	2001-177, 2002-49-78-93, 2003-28, 2004-157, 2005-76-77-189, 2006-126-170-191
NZ 534	Dec 1999	1999-471, 2001-237, 2002-135, 2004-70, 2007-83
NZ 541	Jan 1998	1998-436, 2000-220-378, 2002-24-25, 2003-142, 2004-171-172, 2005-95
NZ 542	Apr 1997	1998-122-123-233, 1999-23, 2000-220-338-378,
NZ 561	Oct 2006	2006-228, 2007-93-169
NZ 614	Jan 1999	2000-84-409-418, 2001-153-195-248, 2002-143, 2003-29-43-107, 2004-49-53-207, 2005-155-165, 2006-43-161, 2007-53-151
NZ 615	Apr 1999	1999-276-376-400-424-452, 2000-93-355-417-420, 2001-76, 2002-62-104, 2003-57, 2004-49-53-80-110, 2005-62, 2006-113, 2007-61
NZ 632	Jun 2000	2000-296-403, 2001-228, 2005-205-246, 2007-106
NZ 661	Jun 2000	2002-128, 2003-101, 2004-23 -2006 -145
NZ 681	Jul 2000	2002-68-69, 2004-184-208, 2006-172-173, 2007-170
NZ 827 (T 827)	Oct 1998	1999-327, 2000-51, 2003-177, 2005-103
NZ 845	Jul 1996	1999-319,
NZ 865	Oct 1993	1998-304-325, 2003-97
NZ 885	Jul 2007	
NZ 945	Oct 1995	2001-84, 2002-71
NZ 955	Oct 1993	1994-209, 1995-284, 1997-397, 2001-85, 2002-73
NZ 1414	Oct 1980	1983-165-174, 1990-87-192, 1991-23, 2001-242
NZ 2225	Apr 1994	1994-209-254-279, 1995-147,
NZ 2325	Jun 2006	2006-144, 2007-70
NZ 2411	Jul 2000	2004-71
NZ 2681	Oct 1995	1997-132,
NZ 2862	Apr 1992	1993-37, 1994-158-209,
NZ 3111	Apr 1992	1992-335, 1993-38-91-92, 1994-209, 1995-282, 2000-364,
NZ 4111	Jan 2003	
NZ 4212	Apr 2001	2001-226, 2006-216
NZ 4265	Oct 1995	1995-381, 1996-210, 2000-267, 2005-233-247, 2006-81-200
NZ 4314	Jun 2004	2004-176, 2005-177, 2006-129
NZ 4315	Oct 2004	2004-226, 2005-20-48, 2006-80
NZ 4421	Jul 2001	2003-143
NZ 4423	Jul 2001	
NZ 4424	Jul 2001	2004-102
NZ 4432	Jul 1997	2002-51-159, 2003-143, 2007-94
NZ 4541	Apr 1995	2001-110, 2003-114-149
NZ 4631	Jan 2000	2003-131-149
NZ 4632	Jul 2000	2003-131
NZ 4633	Jul 2000	2001-165-205, 2002-79-104, 2003-58-67, 2004-158-218, 2005-49-96-127-221-245, 2006-127, 2007-118
NZ 4634	Jul 2000	2001-165-194, 2003-58-67, 2004-158-216-218, 2005-89-127-221, 2006-159, 2007-118
NZ 5111	Apr 2001	2003-51, 2004-26-87
NZ 5113	Apr 2001	
NZ 5114	Apr 2001	
NZ 5121	Oct 1994	
NZ 5124	Jul 1994	1994-287-314, 1995-240-290-317, 1996-80-144-182-285-291-407, 1997-145-206-214, 1998-108-394, 2000-346-398, 2001-107-214, 2003-153, 2004-56-189, 2005-117-137-175, 2007-33-51
NZ 5125	Jul 1994	1995-30, 1996-80, 1997-20-206, 1998-296-403, 2000-346, 2001-214, 2005-117-118, 2006-66, 2007-45-51
NZ 5212	Sep 1999	2003-154, 2005-167
NZ 5214	Jul 2004	2005-53, 2005-163, 2006-189
NZ 5215	Jul 2004	2005-53-112-220-243, 2006-180-189-197

<i>Chart Number</i>	<i>Current Edition</i>	<i>Notices to Mariners Affecting Chart</i>
NZ 5225	Oct 1997	1998-268, 1999-109-232-374, 2000-219, 2003-141, 2007-167
NZ 5227	Jan 1996	1996-156, 1997-401, 1998-101, 1999-38, 2000-104-390, 2001-239, 2004-106, 2005-47-166-167
NZ 5318	Sep 2001	2002-135, 2004-70, 2005-190, 2006-208
NZ 5321	Dec 2003	2004-156, 2005-232, 2006-42-111-198-215-239, 2007-24
NZ 5322	Sep 2001	2001- 246, 2002-20, 2003-73-148-155, 2004-156-170-190, 2005-168, 2006-42-58-134-190-226-239, 2007-24-60-147-148
NZ 5324	Oct 2002	2003-28-66-148, 2004-107-124, 2005-101-133-189-197-244, 2006-96-111-112-190-198-215-226-239, 2007-147-148-149-190
NZ 5325	Jul 1994	1997-355-382, 1998-173-202-332, 1999-442, 2000-347, 2001-121, 2003-148, 2004-163, 2005-197, 2007-149-150-190
NZ 5327	Mar 2005	2005-77, 2006-126, 2007-82
NZ 5328	Mar 2005	2006-126, 2007-82
NZ 5411	Jul 2004	2005-78-95
NZ 5412	Oct 2004	2005-78-95
NZ 5413	Jan 1998	1998-362, 2000-220-425, 2002-24-25, 2003-142-185, 2004-171-172, 2005-95
NZ 5423	Jul 2001	
NZ 5551	Apr 1997	
NZ 5612	Oct 2006	2006-228, 2007-46-52-93-169
NZ 5613	Jan 1998	2000-329, 2001-109, 2003-42-84, 2004-47-99-141, 2005-134, 2006-52-78-158-171
NZ 6142	Jan 1998	1999-99-246-265-377, 2000-234, 2001-29-30-112-153, 2002-143, 2003-100, 2005-156, 2006-43-161, 2007-53-84
NZ 6143	Apr 2002	
NZ 6151	Apr 1998	1999-120-452, 2000-420, 2001-76-196, 2004-49-53
NZ 6152	Apr 1998	1998-303-334, 1999-120-185-276-452, 2001-62-76, 2002-62, 2004-49-53-173, 2005-146
NZ 6153	Jul 2000	2003-90-187, 2004-53-110, 2005-61-62, 2006-209, 2007-34-61-121
NZ 6154	Jul 2000	2003-90, 2004-53-125, 2005-204, 2006-209, 2007-34-121
NZ 6212	May 1999	1999-293, 2000-356, 2002-104, 2003-57, 2004-53-60
NZ 6321	Jun 2000	2000-379-403, 2001-154-228, 2002-55-63, 2004-81-174, 2005-178, 2006-33
NZ 6324	Jan 1999	1999-433, 2001-111-123, 2005-246, 2007-106
NZ 6422	Jun 2004	2004-177, 2006-135-240-241
NZ 6433	Apr 2003	
NZ 6612	Jul 2004	2005-102-157
NZ 6821	Jan 2000	2001-206, 2003-121-176, 2004-134-184-196, 2007-125-170-177
NZ 6823	Jul 2000	2001-64, 2002-33-69-85, 2005-222, 2006-173
NZ 6912	Jul 2001	2003-91, 2004 -82
NZ 7132	Mar 2005	
NZ 7142	Oct 1994	1997-263
NZ 7622	Oct 1998	1999-24-284, 2004-227, 2005-64, 2006-54
NZ 7623	Apr 1999	2005-64, 2006-54
NZ 7624	Apr 1999	2005-79, 2006-67
NZ 7653	Jan 1997	1997-168, 1998 -151-298, 1999-410, 2005-90, 2006-59
NZ 7654	Mar 2002	2002-108, 2005-90, 2006-54-89
NZ 8215 (T 8215)	Jan 1996	
NZ 8234 (T 8234)	Oct 1993	1994-77
NZ 8235 (T 8235)	Oct 1993	2004-31
NZ 8238 (T 8238)	Apr 2005	
NZ 8247 (T 8247)	Oct 1993	1994-182-266, 1998 -180-378, 2005-97-129
NZ 8248 (T 8248)	Oct 1993	1994-182-266, 1995-262, 1998-180-378, 2005-97-129
NZ 8259 (T 8259)	Jul 1993	
NZ 8266 (T 8266)	Jul 1993	1993-304, 1994-87-106-346, 1995-181, 1997-298, 1998-409
NZ 8275 (T 8275)	Apr 2007	2007-139
NZ 8655	Oct 1993	1997-324, 1998-240-342, 2004-165, 2007-177
NZ 8685	Oct 1993	1995-203-224, 1996-30-280, 1997-154-169, 1998-32, 2004-166
NZ 9558	Oct 1992	1994-209, 1995-126-269-357, 2002-72-95, 2003-160, 2007-191

<i>Chart Number</i>	<i>Current Edition</i>	<i>Notices to Mariners Affecting Chart</i>
NZ 14051 (INT 51)	Jan 1997	1997-370, 2000-43-44 -92-357-426, 2001-124, 2004-94-135, 2005-140-158-183, 2006-137-151, 2007-171
NZ 14052 (INT 52)	Apr 1997	1997 -264-340-377, 1998-134-181-220, 1999-80-219, 2000 -74-102-163-178-244-276-277-357-410-427, 2001-51-57, 2002-58-59-96, 2004-73-93, 2005-28-80-81-158-182-199-201-214-215-251-252, 2006-35-55-60-98-99-116-164-165-166-174-181-221, 2007-36
NZ 14060 (INT 60)	Jan 1997	1997-138-144-170-196-264-283-300-340, 1998-85-142-195-220-234-248-316-344-392, 1999-80-101-167-218-411-418-435, 2000 - 52-74-95-112-129-190-243-244-252-302, 2001-51-144-168, 2002-34-42-56-58, 2003-125-133-156, 2004-40-61-62-63-65-66-73, 2005-25-26-28-35-37-81-138-179-180-199-213-214-234-235-248-250-251, 2006-60-90-97-98-115-130-164-165-166, 2007-36-47-140
NZ 14061 (INT 61)	Jan 1997	1997-120-144-170-196-283-291-300, 1998-85-142-195-220-234-316-392, 1999-101-167-213-218-239-418, 2000-44-65-74-95-126-129-140-274-302-311-374-380-391, 2001-51-124-135-168-169, 2002-34-58, 2003-125-128-156, 2004-64-127-142-167-179, 2005-28-35-147-234-235-248, 2006-181, 2007-47-140
NZ 14065 (INT 65)	Jan 1997	1997-162-178, 1998 -152-195-392, 1999-137-320-338, 2002-74, 2004-103, 2005-235
NZ 14600 (INT 600)	Jul 2007	
NZ 14601 (INT 601)	Jul 2007	
NZ 14602 (INT 602)	Jul 2007	
NZ 14604 (INT 604)	Oct 1996	1997-21-144-163-277, 1998-125-220, 1999-81, 2000-94-95-129-190-300-302, 2001-86-168-2002-34-42-56-57-58, 2003-133-150, 2004-40-50-63-67-91-92, 2005-27-37-81-179-180-198-214-223-250, 2006-100-150-164, 2007-36
NZ 14605 (INT 605)	Jul 2007	
NZ 14606 (INT 606)	Jul 2007	
NZ 14607 (INT 607)	Apr 1997	1997-278, 1999-201-213, 2000-65-311-374-380-391, 2001-124-135-169, 2002-113, 2003-128, 2004-64-127-135-142-167-178-179, 2005-148, 2006-131-181
NZ 14612	Apr 1999	
NZ 14613	Apr 1999	2000-154, 2001-135, 2004-74
NZ 14629 (INT 629)	Apr 1997	1998-212, 2000-161, 2001-51, 2002-120, 2005-28
NZ 14630 (INT 630)	Apr 1997	1997-283, 2000-169, 2001-51, 2002-72-73-120
NZ 14631 (INT 631)	Apr 1997	1997-283, 1998-132-234, 1999-327, 2000-74-175, 2001-51, 2002-27-120, 2004-41, 2005-28, 2007-140
NZ 14638 (INT 638)	Oct 1996	1997-196, 1998 -132-234-290-316-317, 1999-81-327-367, 2000-22-23-129-320, 2002-34, 2003-127-156, 2004-41, 2005-223, 2007-47
NZ 14900 (INT 900)	Apr 1998	2002-74, 2003-126
NZ 14901 (INT 9001)	Jul 2007	
NZ 14902 (INT 9002)	Jul 2007	
NZ 14906 (INT 9006)	Aug 2006	
NZ 14907 (INT 9007)	Aug 2006	
NZ 14908 (INT 9008)	Aug 2006	
NZ 14909 (INT 909)	Jun 2004	
NZ 14912 (INT 9012)	Aug 2006	