

NEW ZEALAND NOTICES TO MARINERS

Notices

NZ 229 – 235

© Crown Copyright 2007. All rights Reserved. Permission is not required to make analogue copies of these Notices but such copies are not to be sold.

CONTENTS

- I [Explanatory Notes.](#)
 - II [New Zealand Notices to Mariners.](#)
 - III [Corrections to New Zealand Light List.](#)
 - IV [Corrections to Sailing Directions and New Zealand Publications.](#)
 - V [Navigational Warnings. \(NAVAREA XIV\)](#)
 - VI [Corrections to Admiralty List of Radio Signals.](#)
-

New Zealand Notices to Mariners are the authority for correcting New Zealand charts within the New Zealand area of charting responsibility as shown in Notice No. 1.

Mariners are requested to immediately inform Land Information New Zealand, Private Box 5501 Wellington 6145, New Zealand Phone : 0800 665 463 or (04) 460-0110 Fax: (04) 460-0161 or e-mail: info@linz.govt.nz, of the discovery of new or suspected dangers to navigation, or shortcomings in charts and publications.

Changes or defects in aids to navigation should be reported to the Rescue Coordination Centre New Zealand (RCCNZ) via the nearest New Zealand Coastal Maritime Radio Station Phone : (04) 577-8030 Fax : (04) 577-8038 or (04) 577-8041 e-mail: rccnz@maritimenz.govt.nz.

Copies of these Notices can be obtained from Land Information New Zealand, Maritime New Zealand, Principal Chart Agents at the major ports of New Zealand and the Internet: <http://www.linz.govt.nz>

EXPLANATORY NOTES

Charts. The notices in Section II give instructions for the correction of charts. Geographical positions refer to the largest scale chart unless otherwise stated. They are normally given in degrees, minutes and decimals of a minute, but may occasionally quote seconds for convenience when plotting from the graduation of some older-style charts. Bearings are true reckoned clockwise from 000° to 359°; those relating to lights are given as seen by an observer from seaward. Symbols referred are those shown in publication *NZ 201*.

Alterations to depth contours, deletion of depths to make way for new detail, etc. are not mentioned unless they have some navigational significance.

Blocks or notes accompanying notices in Section II are placed after Section VI.

Temporary and Preliminary Notices. These are indicated by (T) or (P) after the notice number. A list of (T) and (P) Notices in force is published in the fortnightly Editions of Notices to Mariners. Charts are not corrected for them before issue; they should be corrected in pencil on receipt.

Light Lists. The detailed correction to the Light List is given in Section III and may not be published in the same edition as the chart correcting notice. The entire entry for each light is printed, and an asterisk (*) is shown under the column which contains an amendment. In the case of a new light, an asterisk (*) appears under all the columns. New and extensively altered entries are intended to be pasted in. It is recommended that a manuscript entry be made for all shorter corrections.

It is emphasized that the List of Lights is the authority for lights and that many alterations, especially those of a temporary but operational nature, may only be promulgated as corrections to the List of Lights.

Radio Signals. When radio signals are affected by a notice the Admiralty List of Radio Signals reference number is quoted. The detailed correction to the List of Radio Signals is given in Section VI and may be published in a later edition than the chart correcting notice.

Sailing Directions Corrections to Sailing Directions are given in Section IV. It is recommended that such corrections be kept together in a file with the latest list of those in force on top. The file can then be consulted when using the parent book to see if any notices affecting the area under consideration are extant.

Corrections should not be pasted into the parent book or Supplement as corrections may be issued between closing date and issue of a new Supplement. These will be embodied in the text of the following Supplement. A summary of corrections in force will be issued in Section IV of the Fortnightly Edition at monthly intervals.

New Zealand Publications. Corrections to New Zealand Publications are given in Section IV.

Correction of Charts and Publications by the User. New Zealand Notices to Mariners contain important information and should be used to keep the specified charts and books up to date.

THE USE OF CHARTS AND ASSOCIATED PUBLICATIONS

Reliance on Charts and Associated Publications. While every effort is made to ensure the accuracy of the information on New Zealand charts and other publications, it should be appreciated that it may not always be complete and up to date. The mariner must be the final judge of the reliance to be placed on the information given, bearing in mind their particular circumstances, local pilotage guidance and the judicious use of available navigational aids.

Charts. Charts should be used with prudence: there are areas where the source data are old, incomplete or of poor quality. The mariner should use the largest scale appropriate for his particular purpose; apart from being the most detailed, the larger scales are usually corrected first. When extensive new information (such as a new hydrographic survey) is received, some months may elapse before it can be fully incorporated in published charts. On small scale charts of ocean areas where hydrographic information is, in many cases, still sparse, charted shoals may be in error as regards position, least depth and extent. Undiscovered dangers may exist, particularly away from well-established routes.

Further guidance. The Mariner's Handbook (NP 100) gives a fuller explanation of the limitations of charts. All users should study it in their own interest.

II

NUMERICAL INDEX OF CHARTS AFFECTED
(NZ NTM Edition No.25 dated 7 December 2007)

NZ Chart No.	NZ Notices	INT Chart No.	Notices
NZ 21	NZ 235(T)	INT 641	NZ 235(T)
NZ 23	NZ 235(T)	INT 640	NZ 235(T)
NZ 43	NZ 235(T)		
NZ 5125	NZ 229		
NZ 5215	NZ 234(T)		
NZ 5325	NZ 230		
NZ 5328	NZ 231		
NZ 8655	NZ 232		
NZ 14606	NZ 233	INT 606	NZ 233

NEW ZEALAND TEMPORARY AND PRELIMINARY NOTICES IN FORCE

(NZ NTM Edition No.25 dated 7 December 2007)

NZ Notice	T/P	Charts Affected		Locality and Subject
		NZ	INT	
133/01	T	6612		Otago Hr.: Shoaling
180/03	T	6154		Picton Hr.: Shoal Depths.
129/04	T	52, 53, 522, 5227		Hauraki Gulf: Dredging Operations
194/04	P	46, 48, 61, 463, 614, 6151, 6152, 6153, 6154		Marlborough Sounds: Use of Automated Navigation Systems
54/05	T	5322		Auckland Hr.: Works in Progress
110/05	T	8248		Tonga: Light Unlit
159/05	T	5322		Auckland Hr. Bridge: Precautionary Area.
161/05	P	4633, 4634		Wellington Hr.: Navigation Safety Bylaw
173/05	T	53, 54, 531, 534, 5318		Whitianga Hr.: Sandbar
219/05	T	614		Motueka River: Current Meter
237/05	T	5214, 5215		Whangarei Hr., Light : Works in Progress
25/06	P	5214, 5215		Whangarei Hr.: Lights
36/06	T	5215		Whangarei Hr.: Shoaling
104/06	T	4314, 4315		Manukau Hr.: Light Destroyed, Light Buoy
176/06	T	23, 26, 56, 14060, 14600	60, 600, 640	N. Island, E. Coast: Scientific Instruments
177/06	T			Indian Ocean: Operation 'Enduring Freedom'
186/06	T	661		Approaches to Otago Hr.: Works in Progress
205/06	T	532, 5324		Tamaki Strait: Motuihe Is.: E. Cardinal Lt Beacon
213/06	P	6153, 6154		Picton Hr.: Lights
219/06	T	14051, 14052, 14060, 14061, 14604, 14605, 14606, 14607, 14629	51, 52, 60, 61, 604, 605, 606, 607, 629	North, South Pacific Ocean: Buoys
234/06	T	56, 561		Hawke Bay: Research Light-Buoy
244/06	T	23, 25, 63, 64	640, 648	Lyttelton Hr.: Waverider Buoy
30/07	T	54, 542		Bay of Plenty: Research Instruments
37/07	T	53, 532, 533, 5327		Firth of Thames: Moorings, Research Instruments
40/07	T	23, 26, 46, 58, 62	640	Cape Palliser SE: Scientific Instruments
56/07	T	73		S. Island, W. Coast, Jackson Bay: Dolphin Monitoring Sensors
63/07	T	4633		Wellington Harbour: Race Marker Buoys
80/07	T	845, 14630, 14631	630, 631	Niue Is.: Navigational Aids, Lights
97/07	T	45, 48		S. Taranaki Bight: Waverider Buoy
100/07	P	4265		Kaipara Hr.: Lights, Buoys and Beacons
117/07	T	5215		Whangarei Hr.: Beacon
127/07	P	45, 48		S. Taranaki Bight: Platform Installation
133/07	T	56, 561		Napier, Awatoto: Current Meter
135/07	T	43, 443		N. Taranaki Bight, Waitara Northwards: Drilling Operations
143/07	T	48, 61		S. Island, N. Coast, Golden Bay: Buoy
144/07	T	6321		Lyttelton Hr.: Works in Progress
156/07	T	632, 6321		Lyttelton Hr.: Buoys, Lights
162/07	T	5214, 5215		Whangarei Hr.: Beacon
172/07	T	51, 512, 5111, 5114		Doubtless Bay, Mangonui Hr.: Light
183/07	T	4633, 4634		Wellington Hr.: Racing Buoys
193/07	T	23, 25, 45, 48	640, 648	S. Taranaki Bight: Waverider Buoy
194/07	T	63, 64		Lyttelton Hr.: Works in Progress
204/07	T			Maritime Safety Broadcasts
211/07	T	52, 53, 522, 5212, 5227		N. Island, E. Coast: Scientific Moorings
216/07	T	63, 6321		Lyttelton Hr.: Current Meter
218/07	T	534, 541, 5411		Bay of Plenty, Waihi Beach: Current Meters
219/07	P	54, 542		Bay of Plenty, Opotiki: Fish Haven
220/07	T	24, 25, 29, 64, 66, 68, 69	648	Foveaux Strait Eastwards: Seismic Survey
221/07	P	45, 48, 443		S. Taranaki Bight: Pipe Laying Operations
222/07	T	512, 521, 522, 5113, 5114, 5121, 5214		N. Island, Rangaunu, Doubtless, Whangaroa, Matauri and Bream Bays: Scientific Moorings
223/07	T	532, 5321		N. Island, Mairangi Bay: Drilling Operations
225/07	T	4432		Port Taranaki: Waverider Buoy
226/07	T	4314		Manukau Hr.: Depths
227/07	T	61, 614		Golden Bay: Spat Catching Area
228/07	T	61, 614		Tasman and Golden Bays: Spat Catching Area
234/07	T	5215		Whangarei Hr.: Beacons, Lights

NZ 229/07 NEW ZEALAND – North Island – East Coast – Bay of Islands – Deep Water Cove – Wreck.

Former notice – NZ 217(P)/07 is cancelled

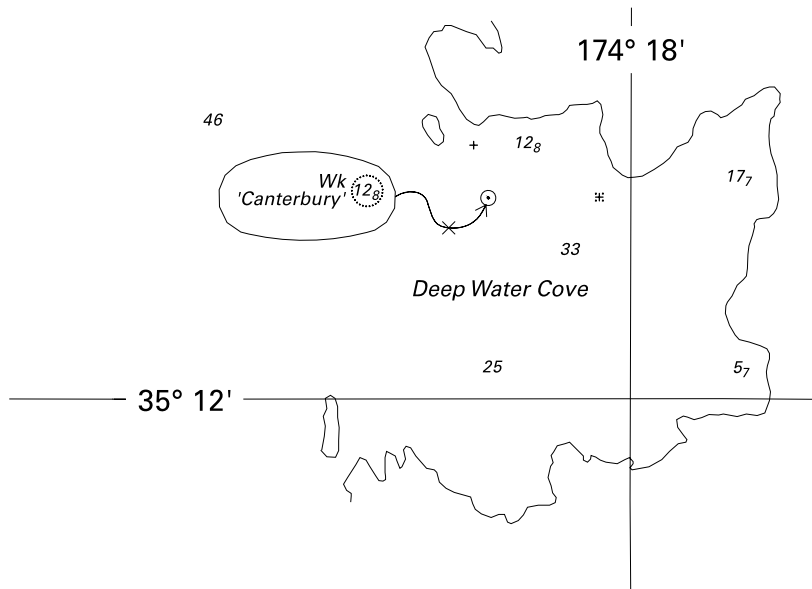
Chart NZ 5125 [51/07]

Insert  Wk 'Canterbury'

35° 11'.64S., 174° 17'.69E.

Northland Regional Council
 NI 283/2007



RIGHT ABOVE CENTRE



<i>Issued as a guide to chart correction.</i>		<i>Use in conjunction with the appropriate NZ Notice to Mariners.</i>	
LAST CORRECTION	NZ NTM No.	CHART No.	
NZ 51/07	NZ 229/07	NZ 5125	

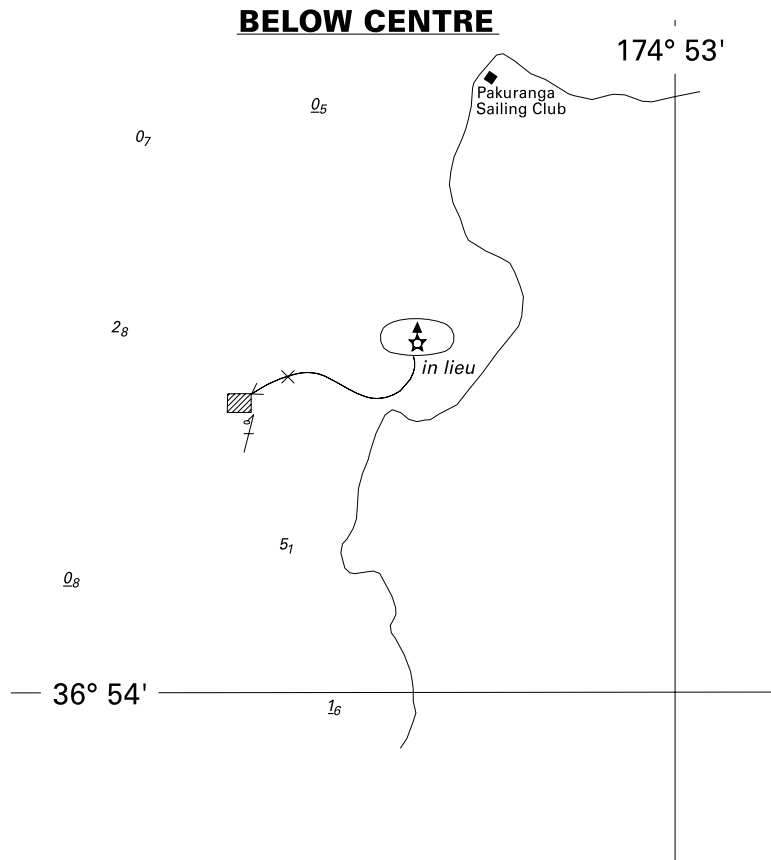
NZ 230/07 NEW ZEALAND – North Island – East Coast – Tamaki River – Beacon.

Chart NZ 5325 [190/07]

Substitute  for 

36°53'.75S., 174°52'.53E.

Land Information New Zealand
 NZ Light List K3849.62
 NI 280/2007



<i>Issued as a guide to chart correction.</i>		<i>Use in conjunction with the appropriate NZ Notice to Mariners.</i>	
LAST CORRECTION	NZ NTM No.	CHART No.	
NZ 190/07	NZ 230/07	NZ 5325	

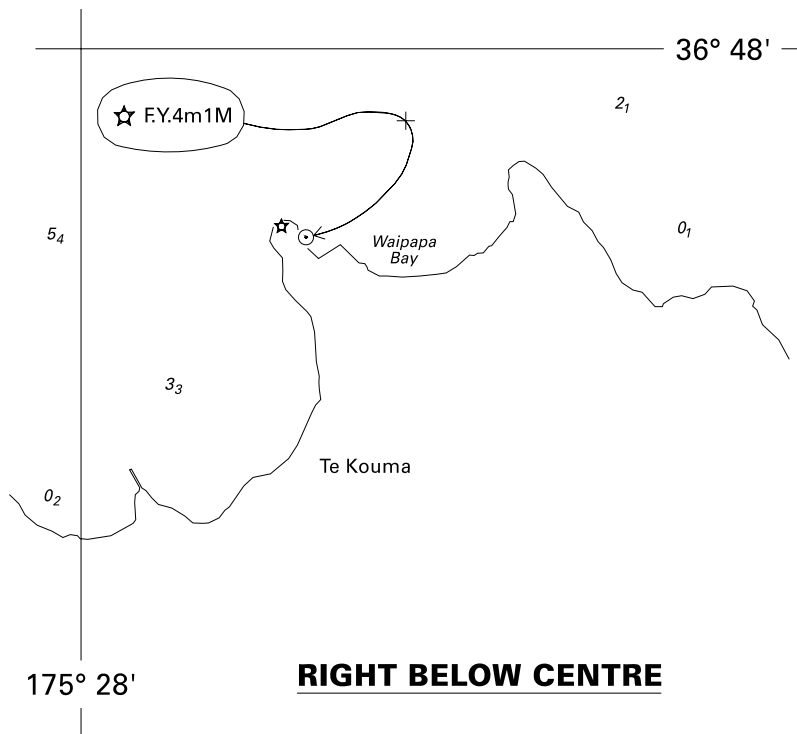
NZ 231/07 NEW ZEALAND – North Island – East Coast – Coromandel Harbour – Waipapa Bay – Light.

Chart NZ 5328 [82/07]

Insert  F.Y.4m1M

36° 48'.27S., 175° 28'.40E.

Environment Waikato
 NZ Light List K3879.7
 NI 281/2007



<i>Issued as a guide to chart correction.</i>		<i>Use in conjunction with the appropriate NZ Notice to Mariners.</i>	
LAST CORRECTION	NZ NTM No.	CHART No.	
NZ 82/07	NZ 231/07	NZ 5328	

NZ 232/07 SOUTH PACIFIC OCEAN – Samoa – Apia Harbour – Anchoring Prohibited Area, Depth.

Chart NZ 8655 [NE Jul 07]

Insert  joining:

- 13° 49'.31S., 171° 46'.00W.
- 13° 49'.31S., 171° 45'.81W.
- 13° 49'.63S., 171° 45'.87W.
- 13° 49'.71S., 171° 45'.95W.
- 13° 49'.62S., 171° 46'.01W.
- 13° 49'.52S., 171° 46'.07W.

depth, 5₆

(a) 13° 48'.58S., 171° 46'.24W.

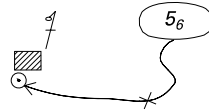
Delete depth, 10₅

close N. of (a) above.

Land Information New Zealand
NI 275/2007

ABOVE CENTRE

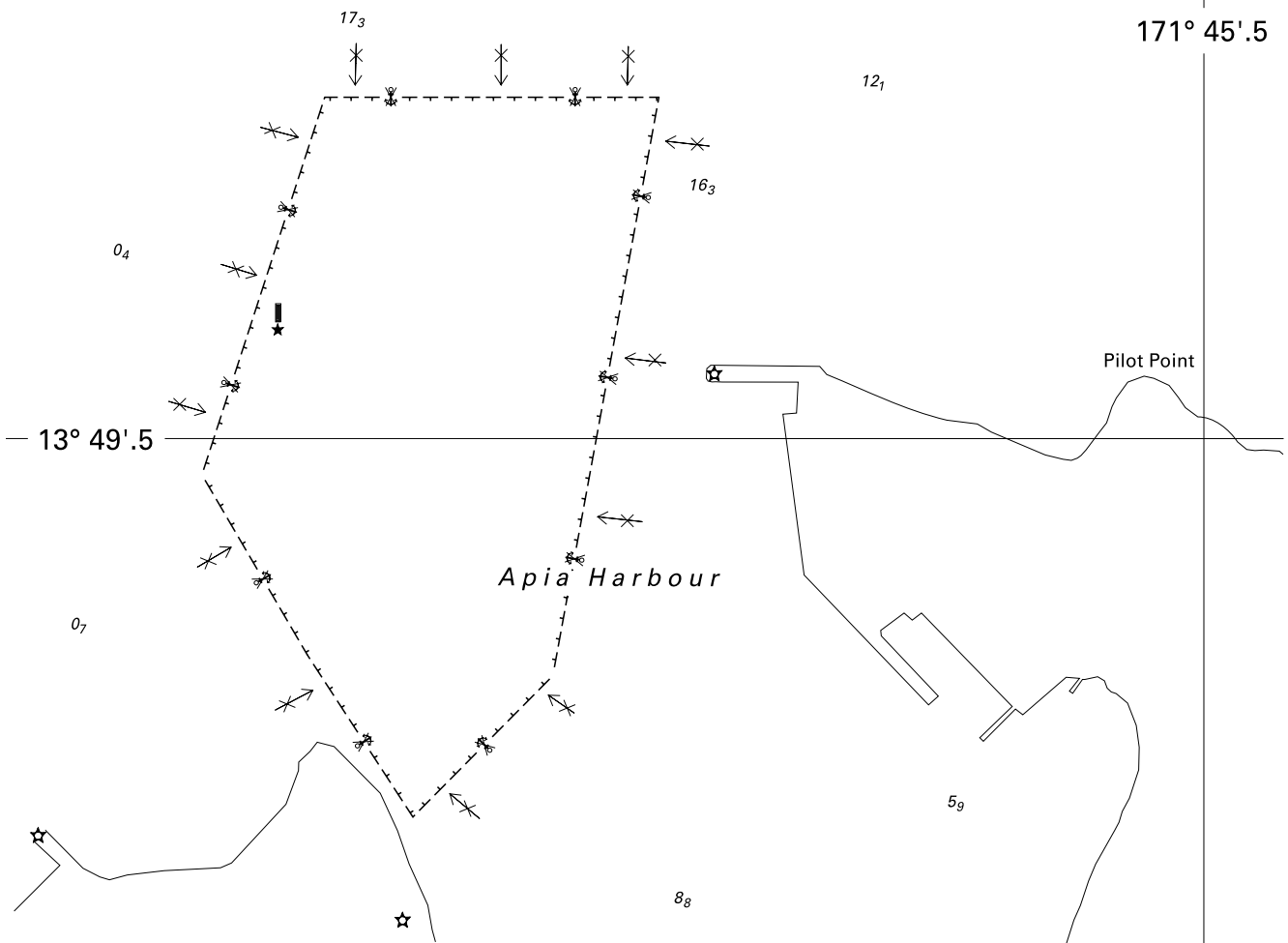
— 13° 48'.5



171° 46'

BELOW CENTRE

171° 45'.5



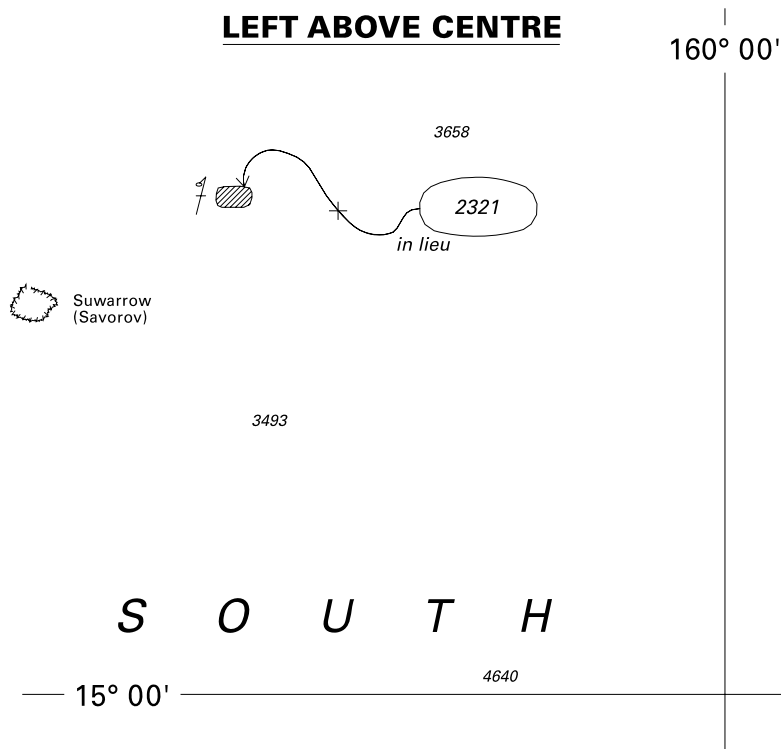
<i>Issued as a guide to chart correction.</i>		<i>Use in conjunction with the appropriate NZ Notice to Mariners.</i>	
LAST CORRECTION	NZ NTM No.	CHART No.	
NE Jul 07	NZ 232/07	NZ 8655	

NZ 233/07 SOUTH PACIFIC OCEAN – Cook Islands – Suvarrow Northeastwards and Rarotonga Westwards – Depths.

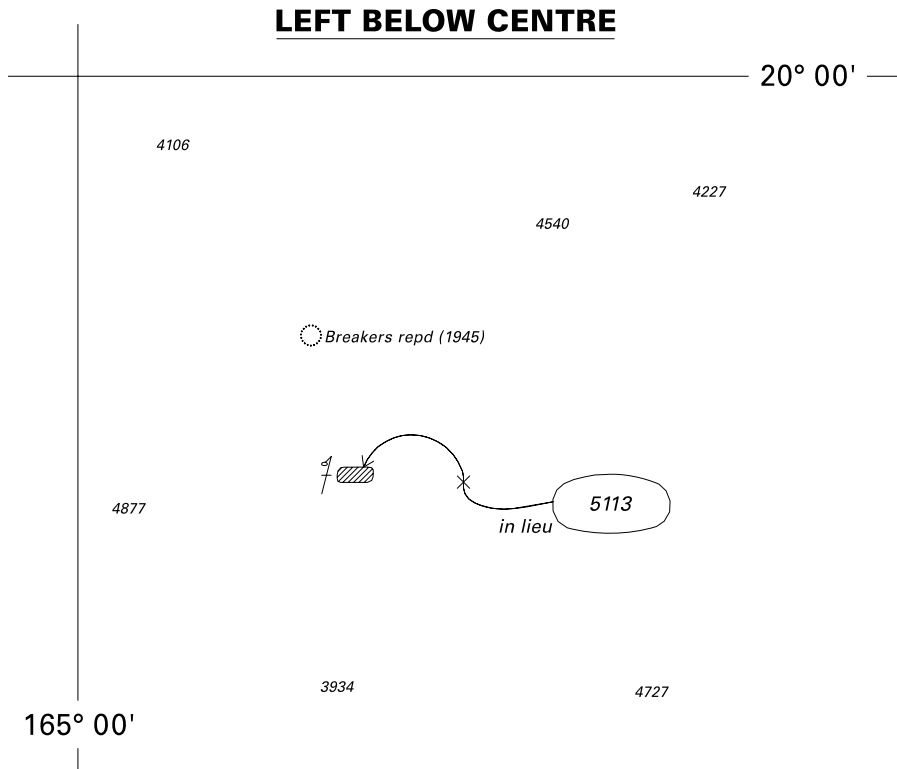
Chart NZ 14606 (INT 606) [NE Jul 2007]

Amend	depth to, 2321	12° 49'S.,	162° 12'W.
	depth to, 5113	21° 41'S.,	163° 46'W.

Land Information New Zealand
 NI 279/2007



<i>Issued as a guide to chart correction.</i>		<i>Use in conjunction with the appropriate NZ Notice to Mariners.</i>	
LAST CORRECTION	NZ NTM No.	CHART No.	
NE Jul 2007	NZ 233/07	NZ 14606 (INT 606)	



<i>Issued as a guide to chart correction.</i>		<i>Use in conjunction with the appropriate NZ Notice to Mariners.</i>	
LAST CORRECTION	NZ NTM No.	CHART No.	
NE Jul 2007	NZ 233/07	NZ 14606 (INT 606)	

**NZ 234(T)/07 NEW ZEALAND – North Island – East Coast – Whangarei Harbour – Kioreroa Reach –
Lights, Beacons.**

1. From 3rd December 2007 until further notice the following beacons will be removed for maintenance:

K2	35° 46'.74S., 174° 21'.83E.	Q.R.
K4	35° 46'.69S., 174° 21'.53E.	Q.R.
K6	35° 46'.51S., 174° 21'.26E.	Q.R.
K10	35° 46'.18S., 174° 21'.14E.	Q.R.
K13	35° 45'.82S., 174° 21'.15E.	Q.G.

2. Mariners are requested to exercise caution when navigating in the area.

Chart temporarily affected – NZ 5215

Northland Regional Council
NZ Light List K3722.9, 3723.2, 3723.6, 3724.6, 3725.2
NI 284/2007

**NZ 235(T)/07 NEW ZEALAND – North Island – West Coast – Cape Egmont Northwards – Drilling
Operations Complete.**

Former notice – NZ 214(T)/07 is cancelled.

Cancel this notice on receipt.

Charts formerly affected – NZ 21 (INT 641) – NZ 23 (INT 640) – NZ 43

OMV New Zealand Ltd
NI 276/2007

III

CORRECTIONS TO NEW ZEALAND LIGHT LIST

(NZ NTM Edition No.25 dated 7 December 2007)

NEW ZEALAND NAUTICAL ALMANAC 2007/08 LIGHT LIST SECTION

3722.9	-- K2	35 46.74 174 21.83	Q R	5	2	Red □ on pile	Beacon removed (T) 2007
		*					*
3723.2	-- K4	35 46.69 174 21.53	Q R	5	2	Red □ on pile	Beacon removed (T) 2007
		*					*
3723.6	-- K6	35 46.51 174 21.26	Q R	5	2	Red □ on pile	Beacon removed (T) 2007
		*					*
3724.6	-- K10	35 46.18 174 21.14	Q R	5	2	Red □ on pile	Beacon removed (T) 2007
		*					*
3725.2	-- K13	35 45.82 174 21.15	Q G	5	1	Green △ on pile	Beacon removed (T) 2007
		*					*
3849.62	- No. 15	36 53.75 174 52.53	Q G	4	2	Green △ on green beacon	
		*					
3879.7	-Te Kouma Boat Ramp	36 48.27 175 28.40	F Y	4	1	Wooden pole 4	
		*					
*	*	*	*	*	*	*	*

(NI 280, 281, 284/2007)

IV

CORRECTIONS TO PUBLICATIONS

(NZ NTM Edition No.25 dated 7 December 2007)

AMENDMENTS TO SELECTED ADMIRALTY SAILING DIRECTIONS 2007 (IN NEW ZEALAND CHARTING AREA)

NP 14 Australia Pilot Volume II (2004 Edition)

New South Wales - Batemans Bay — Leading lights

269

Paragraph 11.74 1 lines 6-12 *Replace by:*

Front light (orange rectangle, white vertical stripe, 9 m in height) (35°43'1S 150°11'8E).

Rear light (similar structure, 12 m in height) (35 m from front).

Australian Hydrographic Office
(AA 295800; AA 295803)

[BA48/07]

New South Wales - Port Kembla — Boarding grounds

283

Paragraph 12.31 1 lines 5-8 (including existing Section IV Notice Week 32/06) *Replace by:*

Inner A: in position 34°25'2S 150°56'9E.

Outer B: for vessels 226 m LOA or greater; in position 34°24'2S 150°57'6E.

Paragraph 12.31 2 lines 1-4 (including existing Section IV Notice Week 32/06) *Delete*

Port Kembla Notice 022-07
(AA 294803)

[BA48/07]

NP 15 Australia Pilot Volume III (2005 Edition)

Queensland - Brisbane River — Directions; leading lights

140

Paragraph 4.100 1 line 7 *Replace by:*

Parker Island Reach directional light

Paragraph 4.100 2 line 1 *Replace by:*

No 9 Light Beacon (directional)...

Paragraph 4.100 2 line 3 *Delete*

Paragraph 4.100 2 lines 6-7 *Replace by:*

...navigational span of Gateway Bridge; and the white sector (061¾°), astern, of No 9 Light Beacon (also displayed...

Queensland Notice 744P/2007
(AA 293824)

[BA46/07]

Queensland - Barwon Bank — Directions; light buoys

148

Paragraph 5.41 1 lines 5-7 *Replace by:*

Clear of Barwon Bank (24 miles ESE), as required by draught and weather. Two fish aggregation devices, marked by light buoys (special) lie 9 miles W of the bank. Thence:

Australian Notice 22/951/07
(AA 291640; AA 296434)

[BA48/07]

Queensland - Great Sandy Strait — Directions; light buoy

158

Paragraph 5.107 8 lines 3-5 *Replace by:*

ENE of S9 Light Buoy (starboard hand) (1¼ miles NE), moored on the E side of Long Middle Bank; thence:

Australian Notice 20/852/07
(AA 291596)

[BA44/07]

IV

NP 61 Pacific Islands Pilot Volume II (2006 Edition)

Nouvelle Calédonie, Île Lifou - Baie de Chépénéhé — Submarine cable; anchorage

161

After Paragraph 5.65 1 line 8 *Insert*:

Submarine cable. A cable is laid SW from Pte de débarquement (20°47'0S 167°09'2E) to 20°47'3S 167°08'9E.

Local knowledge is advisable when it is required to anchor at night, due to the proximity of the drying reefs SW of Rocher la Tour.

Paragraph 5.65 5 *Replace by*:

- 5 **Anchorage** may be obtained as convenient in Baie de Chépénéhé but clear of drying reefs and a submarine cable which lie within 4½ cables SW and 5 cables SSW, respectively, of Rocher la Tour.

An anchorage is situated in a depth of 25 m, sand and coral, with the war memorial bearing 015°, distant 5½ cables, taking note of the submarine cable which lies about 1½ cables NW.

French Notice 41/52/07
(HH. 585/410/03)

[BA46/07]

Nouvelle Calédonie, Atoll d'Ouvéa - Passe du Coëtlogon — Submarine cable

164

After Paragraph 5.84 *Insert*:

Submarine cable **5.84a**

- 1 A submarine cable is laid generally NNW, from 20°43'1S 166°23'4E to 20°42'9S 166°23'2E. This cable extends 1½ cables across the W entrance of Passe du Coëtlogon.

French Notice 41/51/07
(HH. 585/410/03)

[BA46/07]

(NI 277/2007)

NP 62 Pacific Islands Pilot Volume III (2006 Edition)

Homeland Security Advisory System

11

After Paragraph 1.77 *Insert*:

Homeland Security Advisory System

1.77a

- 1 The Homeland Security Advisory System (HSAS) is used throughout the United States to disseminate information regarding the risk of terrorism. The system is comparable to US Coastguard Maritime Security (MARSEC) threat levels used in accordance with the ISPS Code.
- 2 The Commandant of the US Coastguard sets MARSEC threat levels commensurate with the HSAS. Because of the unique nature of the maritime industry, the HSAS threat conditions and MARSEC threat levels will align closely, though they will not directly correlate.
- 3 The following table illustrates the relationship between the MARSEC and HSAS threat levels:

<i>MARSEC Level</i>	<i>HSAS Level</i>	<i>HSAS Colour Code</i>
1	Low	Green
1	Guarded	Blue
1	Elevated	Yellow
2	High	Orange
3	Severe	Red

- 4 For further information, refer to *The Mariner's Handbook*.

US Coast Pilot 9 25th Edition Change No 4
(HH. 078/557/10)

[BA44/07]

Hawaiian Islands, Oahu - Pearl Harbor — Outfall

305

After Paragraph 13.89 *Insert*:

Submarine pipeline **13.89a**

- 1 A submarine outfall is laid at the E edge of the entrance channel, generally SSE, from 21°18'6N 157°57'5W to 21°17'7N 157°57'1W.

USA Notice 42/19369/07
(HH. 613/410/070)

[BA46/07]

V

NAVIGATIONAL WARNINGS

Navarea XIV warnings in force 5 December 2007

NAVAREA XIV (South West Pacific)

010/07 SOUTH PACIFIC. FIJI LIGHTS. INT CHART 638

Following light reported unlit: Navula Point K4706 17 53.2S 177 15.2E.

026/07 SOUTH PACIFIC. MARQUESIAN ARCHIPELAGO - TUAMOTU ARCHIPELAGO - GAMBIER ARCHIPELAGO. SOUTHERN ISLANDS. INT CHART 607

1. Since 080100 UTC JUN 07 local radio station, Mahina Radio, is unable to transmit on channel 2182 KHz.
2. Channel 8291 KHz is operational for watch distress alerts.
3. Meteorological forecast and navigational warnings are broadcast on channels 2620 KHz and 8803 KHz at scheduled times. There is no alert broadcast on 2182 KHz.
4. Navigators are requested to report all distress alerts to Maritime Rescue Coordination Center Papeete via MRCC Papeete telephone 689 465316, Inmarsat-C 582 422 799 192, email mrccpapeete@mail.pf

052/07 SOUTH PACIFIC. FRENCH POLYNESIA - ILES AUSTRALES - FALLING SPACE DEBRIS. INT CHART 61

1. Impact area dangerous to navigation from falling space debris between 072124 UTC and 072322 UTC Dec 07.
 2. Danger area bounded by:
30 02S 152 30W, 27 58S 150 16W, 25 20S 147 36W,
21 26S 143 59W, 22 32S 142 31W, 23 09S 141 47W,
24 00S 142 23W, 27 01S 145 14W, 29 56S 148 15W.
 3. Cancel this message on 072330 UTC Dec 07.
-

VI

CORRECTIONS TO ADMIRALTY LIST OF RADIO SIGNALS (NZ NTM Edition No.25 dated 7 December 2007)

VOLUME 2, NP 282, 2007/08

Published Wk 13/07

(Last Amendments: Weekly Edition No. 47 dated 22 November 2007)

LEGAL TIME

PAGE 218, Lord Howe I.

Delete entry and replace by:

Lord Howe I.	-10½	-11	First Sun in Oct 0200h LT	First Sun in April 0230h LT
--------------	------	-----	---------------------------	-----------------------------

OAG Worldwide Ltd (HH080/030/10 - E86) 48/07

VOLUME 3, PART 2, NP 283(2), 2007/08

Published Wk 3/07

(Last Amendments: BA Weekly Edition No. 44 dated 1 November 2007)

RADIO-FACSIMILE

PAGE 77, VMC AUSTRALIA WEATHER EAST (CHARLEVILLE).

Delete entry and replace by:

VMC AUSTRALIA WEATHER EAST (CHARLEVILLE)				26°19'S 146°16'E
	2628			0900-1900
	5100			H24
	11030			
	13920			
	20469			
DIAGRAMS: pages 47, 79 and 80				
Map Areas				
AUST 0°.88°E 0°.173°E 50°S.66°E 50°S.162°W	(b)	MSL 10°S-90°S 0° east to 180°	(c)	SWP 40°S.6°W 6°S.154°E 8°S.78°W 7°N.160°W
PSST 20°N.140°E 20°N.100°W 50°S.140°E 50°S.100°W	(a)	IOSST 20°N.30°E 20°N.150°E 50°S.30°E 50°S.150°E	(a)	CASEY 50°S.80°E 50°S.160°E 70°S.80°E 70°S.160°E
A 30°N.70°E 30°N.130°E 35°S.70°E 35°S.130°E	(a)	B 30°N.120°E 30°N.180° 35°S.120°E 35°S.180°	(a)	C 30°N.70°E 30°N.180° 35°S.70°E 35°S.180°
ASIAN 40°N.70°E 40°N.180° 40°S.70°E 40°S.180°	(a)	SH 20°S-90°S All longitudes	(c)	WW 0°.88°E 0°.173°E 53°S.88°E 53°S.173°E
				IO 12°N.50°E 12°N.130°E 20°S.0° 20°S.180°
				FDI 7°S.108°E 7°S.169°E 50°S.108°E 50°S.169°E

continued on next page

VI

Schedule			
IO	Indian Ocean MSLP Anal (Manual) ¹	0000(12)	
AUST	Australian MSLP Prog (H+36)	1200(12)	
	VMC / VMW Schedule, page 1 of 2	0015	1215
	VMC / VMW Schedule, page 2 of 2	0030	1230
	VMC / VMW Information Notice	0045	
	IPS Recommended Frequencies for VMC (Charleville)	0100	
	IPS Recommended Frequencies for VMW (Wiluna)	0130	
MSL	Indian Ocean MSLP Prog (H+36)	1245(12)	
SWP	South Pacific Ocean Total Waves (H+48)	1315(00)	
IO	Indian Ocean Total Waves (H+48)	1330(00)	
PSST	Pacific Ocean Sea Surface Temps (weekly)	1345	
AUST	Australian MSLP Prog (H+36)	0200(00)	
IOSST	Indian Ocean Sea Surface Temps (weekly)	1400	
CASEY	Casey Eastern and Western High Seas (H+48)	1415(00)	
	Australia MSLP Anal (Manual)	0245(00)	1430(12)
AUST	Australian 500 hPa Anal	0300(00)	1500(12)
	Australian MSLP Prog (H+36)	1515(12)	
	Voice broadcast information for VMW (Wiluna)	0315	
	Australian MSLP Anal (Manual) ¹	0345(00)	
AUST	Australian 500 hPa Prog (H+24)	0400(00)	1600(12)
	Australian MSLP 4 day forecast days 1 and 2	0430	
	Australian MSLP 4 day forecast days 3 and 4	0445	
FDF	Australian MSLP 4 day forecast, days 1 and 2 ¹	0500	
	Australian MSLP 4 day forecast, days 3 and 4 ¹	0515	
	IPS Recommended Frequencies for VMC (Charleville)	1630	
	IPS Recommended Frequencies for VMW (Wiluna)	1700	
A	Asian (part A) Gradient Level Wind Anal (Manual)	0600(00)	1800(12)
B	Asian (part B) Gradient Level Wind Anal (Manual)	0623(00)	1823(12)
C	Asian MSLP Anal (Manual)	0645(00)	
IO	Indian Ocean MSLP Anal (Manual)	0730(00)	1915(12)
	Australian Wind Waves Ht(m) Prog (H+24)	0745(00)	1930(12)
WW	Australian Swell Waves Ht(m) Prog (H+24)	0800(00)	1945(12)
SWP	South Pacific Ocean MSLP Anal (Manual)	2000(12)	
CASEY	Casey Eastern and Western High Seas (H+24)	2015(12)	
SWP	South Pacific Ocean MSLP Anal	0830(00)	
AUST	Australian MSLP Anal (Manual)	0845(06)	2030(18)
	Casey Eastern and Western High Seas (H+24)	1015(00)	
	Casey Eastern and Western High Seas (H+36)	2215(12)	
	SH 500 hPa Prog (H+48)	2230(12)	
SH	SH MSLP Prog (H+48)	1045(00)	2245(12)
	SH 500 hPa Anal	2300(12)	
	Casey Eastern and Western High Seas (H+36)	1100(00)	
	Casey Eastern and Western High Seas (H+48)	2315(12)	
AUST	Australian MSLP Prog (H+36)	2330(00)	
ASIAN	Asian Sea Surface Temp Anal (weekly)	1130	
MSL	Indian Ocean MSLP Prog (H+48)	2345(12)	
	VMC / VMW Information Notice	1145	

120/576

NOTE: (1) These charts are repeat broadcasts on 11030 kHz only via a directional aerial pointing from Charleville (VMC) towards Tasmania.

(former amendment 25/07)
Bureau of Meteorology, Australia (HH080/021/20 - E25) 46/07

VI

Page 80, diagram, VMC Australia Weather East, VMW Australia Weather West, Index of Map Areas - 1.

Delete map area identifier A and replace by B in approximate positions 29°N 179°E and 34°S 121°E.
Delete map area identifier B and replace by A in approximate positions 29°N 129°E and 34°S 71°E.

(former amendment 25/07)
Bureau of Meteorology, Australia (HH080/021/20 - E25) 46/07

RADIO WEATHER SERVICES AND NAVIGATIONAL WARNINGS

PAGE 202, POLYNÉSIE FRANÇAISE, MAHINA (TAHITI), Weather Bulletins and Navigational Warnings.

Delete and replace by:

Weather Bulletins	
A, C: 0700 2200 LT B, C: 0640 2100 LT	Storm warnings and special weather bulletins (BMS) for all Areas and 24 hour forecast for Areas A35, A40, B35-B45, C35-C50, D30-D50 and E35-E45 in French.
A, C: On receipt 0403 1803 1833 LT B: On Receipt At the end of the next silence period 0030 0230 1845 LT	Special weather bulletins (BMS) only.
Navigational Warnings	
A: 0403 1803 1833 LT B: 0030 0230 1845 2100 LT	Navigational warnings for Îles de la Société, Archipel des Tuamotu and adjacent sea areas.

French Notices 41/07 (RSDRA2007000078776) and Pub. Radio Communications Maritimes, No.92-2 (HH080/022/11 - E9) 46/07

PAGE 202, POLYNÉSIE FRANÇAISE, RADIO TAHITI (RADIO-FRANCE OUTRE-MER (RFO)), Weather Bulletins.

Delete and replace by:

Weather Bulletins	
0355 1555 1655 1735 2030 LT (Mon to Fri) 0425 or 0455 1555 1745 LT (Sat and Sun)	Forecast for the archipelago for fishing vessels and pleasure craft in the triangle Tahiti-Maupiti-Manihi, in French and Tahitian.

French Notices 41/07 (RSDRA2007000078776) 46/07

VOLUME 6, PART 4, NP 286(4), 2007/08

Published Wk 35/07

(Last Amendments: BA Weekly Edition No. 43 dated 25 October 2007)

PAGE 322, NEW ZEALAND, AUCKLAND, Auckland, Waitemata Harbour, Pilots and Port, PROCEDURE.

Delete sections (4) and (5) and replace by:

- (4) Inward-bound vessels greater than 200m LOA or of draught greater than 10.5m must embark a pilot before passing the outer pilot boarding position.
- (5) Outward-Bound vessels should request pilot no less than 2h in advance.
- (6) **Pilot boards** in the following positions:
 - (a) 36°44'·20S 174°50'·50E (Outer)
 - (b) 36°45'·10S 174°49'·80E (Inner)

NZ Notice 21/197/2007, (HH580/130/03 - E11), 44/07

(NI 278/2007)