

NEW ZEALAND NOTICES TO MARINERS

Notices

NZ 30 – 39

© Crown Copyright 2009. All rights Reserved. Permission is not required to make analogue copies of these Notices but such copies are not to be sold.

CONTENTS

- [I Explanatory Notes.](#)
- [II New Zealand Notices to Mariners.](#)
- [III Corrections to New Zealand Light List.](#)
- [IV Corrections to Sailing Directions and New Zealand Publications.](#)
- [V Navigational Warnings. \(NAVAREA XIV\)](#)
- [VI Corrections to Admiralty List of Radio Signals.](#)

New Zealand Notices to Mariners are the authority for correcting New Zealand charts within the New Zealand area of charting responsibility as shown in Notice No. 1.

Mariners are requested to immediately inform Land Information New Zealand, Private Box 5501 Wellington 6145, New Zealand Phone : 0800 665 463 or (04) 460-0110 Fax: (04) 460-0161 or e-mail: info@linz.govt.nz, of the discovery of new or suspected dangers to navigation, or shortcomings in charts and publications.

Changes or defects in aids to navigation should be reported to the Rescue Coordination Centre New Zealand (RCCNZ) via the nearest New Zealand Coastal Maritime Radio Station Phone : (04) 577-8030 Fax : (04) 577-8038 or (04) 577-8041 e-mail: rccnz@maritimenz.govt.nz.

Copies of these Notices can be obtained from Land Information New Zealand, Maritime New Zealand, Principal Chart Agents at the major ports of New Zealand and the Internet: <http://www.linz.govt.nz>

EXPLANATORY NOTES

Charts. The notices in Section II give instructions for the correction of charts. Geographical positions refer to the largest scale chart unless otherwise stated. They are normally given in degrees, minutes and decimals of a minute, but may occasionally quote seconds for convenience when plotting from the graduation of some older-style charts. Bearings are true reckoned clockwise from 000° to 359°; those relating to lights are given as seen by an observer from seaward. Symbols referred are those shown in publication Chart 5011 (*INT 1*) Symbols and Abbreviations used on Admiralty Charts, published by the United Kingdom Hydrographic Office.

Alterations to depth contours, deletion of depths to make way for new detail, etc. are not mentioned unless they have some navigational significance.

Blocks or notes accompanying notices in Section II are placed after Section VI.

Temporary and Preliminary Notices. These are indicated by (T) or (P) after the notice number. A list of (T) and (P) Notices in force is published in the fortnightly Editions of Notices to Mariners. Charts are not corrected for them before issue; they should be corrected in pencil on receipt.

Light Lists. The detailed correction to the Light List is given in Section III and may not be published in the same edition as the chart correcting notice. The entire entry for each light is printed, and an asterisk (*) is shown under the column which contains an amendment. In the case of a new light, an asterisk (*) appears under all the columns. New and extensively altered entries are intended to be pasted in. It is recommended that a manuscript entry be made for all shorter corrections.

It is emphasized that the List of Lights is the authority for lights and that many alterations, especially those of a temporary but operational nature, may only be promulgated as corrections to the List of Lights.

Radio Signals. When radio signals are affected by a notice the Admiralty List of Radio Signals reference number is quoted. The detailed correction to the List of Radio Signals is given in Section VI and may be published in a later edition than the chart correcting notice.

Sailing Directions Corrections to Sailing Directions are given in Section IV. It is recommended that such corrections be kept together in a file with the latest list of those in force on top. The file can then be consulted when using the parent book to see if any notices affecting the area under consideration are extant.

Corrections should not be pasted into the parent book or Supplement as corrections may be issued between closing date and issue of a new Supplement. These will be embodied in the text of the following Supplement. A summary of corrections in force will be issued in Section IV of the Fortnightly Edition at monthly intervals.

New Zealand Publications. Corrections to New Zealand Publications are given in Section IV.

Correction of Charts and Publications by the User. New Zealand Notices to Mariners contain important information and should be used to keep the specified charts and books up to date.

THE USE OF CHARTS AND ASSOCIATED PUBLICATIONS

Reliance on Charts and Associated Publications. While every effort is made to ensure the accuracy of the information on New Zealand charts and other publications, it should be appreciated that it may not always be complete and up to date. The mariner must be the final judge of the reliance to be placed on the information given, bearing in mind their particular circumstances, local pilotage guidance and the judicious use of available navigational aids.

Charts. Charts should be used with prudence: there are areas where the source data are old, incomplete or of poor quality. The mariner should use the largest scale appropriate for his particular purpose; apart from being the most detailed, the larger scales are usually corrected first. When extensive new information (such as a new hydrographic survey) is received, some months may elapse before it can be fully incorporated in published charts. On small scale charts of ocean areas where hydrographic information is, in many cases, still sparse, charted shoals may be in error as regards position, least depth and extent. Undiscovered dangers may exist, particularly away from well-established routes.

Further guidance. The Mariner's Handbook (NP 100) gives a fuller explanation of the limitations of charts. All users should study it in their own interest.

II

NUMERICAL INDEX OF CHARTS AFFECTED (NZ NTM Edition No.2 dated 23 January 2009)

NZ Chart No.	NZ Notices	INT Chart No.	Notices
NZ 52 NZ 53 NZ 56 NZ 531 NZ 532 NZ 561 NZ 4314 NZ 4315 NZ 4432 NZ 5214 NZ 5215 NZ 5324 NZ 5612	NZ 34(T) NZ 34(T), 35(T) NZ 36(T) NZ 34(T) NZ 35(T) NZ 36(T), 37(T) NZ 39(T) NZ 39(T) NZ 32 NZ 31 NZ 31 NZ 35(T) NZ 37(T), 38(T)		
ENC Cell	Notices		
NZ200053 NZ300532 NZ405321 NZ405324 NZ505322 NZ505323 NZ505325 NZ653221 NZ653222 NZ653231 NZ653232	NZ 30 NZ 30 NZ 30 NZ 30 NZ 30 NZ 30 NZ 30 NZ 30 NZ 30 NZ 30 NZ 30		

II

NEW ZEALAND TEMPORARY AND PRELIMINARY NOTICES IN FORCE

(NZ NTM Edition No.2 dated 23 January 2009)

NZ Notice	T/P	Charts Affected		Locality and Subject
		NZ	INT	
133/01	T	6612		Otago Hr.: Shoaling
180/03	T	6154		Picton Hr.: Shoal Depths.
129/04	T	52, 53, 522, 5227		Hauraki Gulf: Dredging Operations
194/04	P	46, 48, 61, 463, 614, 6151, 6152, 6153, 6154		Marlborough Sounds: Use of Automated Navigation Systems
110/05	T	8248		Tonga: Light Unlit
161/05	P	4633, 4634		Wellington Hr.: Navigation Safety Bylaw
173/05	T	53, 54, 531, 534, 5318		Whitianga Hr.: Sandbar
36/06	T	5215		Whangarei Hr.: Shoaling
176/06	T	23, 26, 56, 14060, 14600	60, 600, 640	N. Island, E. Coast: Scientific Instruments
177/06	T			Indian Ocean: Operation 'Enduring Freedom'
205/06	T	532, 5324		Tamaki Strait: Motuihe Is.: E. Cardinal Lt Beacon
213/06	P	6153, 6154		Picton Hr.: Lights
244/06	T	23, 25, 63, 64	640, 648	Lyttelton Hr.: Waverider Buoy
37/07	T	53, 532, 533, 5327		Firth of Thames: Moorings, Research Instruments
56/07	T	73		Jackson Bay: Dolphin Monitoring Sensors
63/07	T	4633		Wellington Hr.: Race Marker Buoys
80/07	T	845, 14630, 14631	630, 631	Niue Is.: Navigational Aids, Lights
219/07	P	54, 542		Bay of Plenty, Opotiki: Fish Haven
20/08	T	54, 542		Bay of Plenty: Research Instruments
35/08	T	614		Motueka River: Current Meter
91/08	P	4424		W. Coast, Taharoa Hr.: Hr. Limits
98/08	T	7142		Greymouth Hr.: Depths
131/08	T	68, 69, 681		Foveaux Strait, Ruapuke Is.: Seabed Obstruction
132/08	T	14051, 14052, 14060, 14061, 14604, 14605, 14606, 14607, 14629	51, 52, 60, 61, 604, 605, 606, 607, 629	North, South Pacific Ocean: ATLAS Buoys
146/08	T	4265		Kaipara Hr.: Light Beacon
147/08	T	6321		Lyttelton Hr.: Works in Progress
159/08	T	661		Approaches to Otago Hr.: Works in Progress
172/08	T	4265		Kaipara Hr.: Light
204/08	T	45, 4541		Wanganui: Light
216/08	T	45, 48		S. Taranaki Bight: Drilling Operations
221/08	T	61, 614		Tasman Bay & Golden Bay: Spat Catching Areas
227/08	T	532, 5321		Karepiro Bay: Scientific Instruments
233/08	T	61, 614		Golden Bay: Spat Catching Area
237/08	T	632, 6321		Lyttelton Hr.: Buoys, Lights
241/08	T	512, 521, 522, 5113, 5114, 5121, 5214		Rangaunu Bay, Doubtless Bay, Whangaroa Bay, Matakuri Bay & Bream Bay: Scientific Moorings
243/08	P	5612		Napier Hr.: New Wharf Development
244/08	P	632, 6321		Banks Peninsula: Mussel Farms
245/08	P	614		Tasman Bay: Mussel Farm
251/08	T	522, 5225		Great Barrier Island: Beacon, Light
252/08	T	512, 521, 5125, 5214, 5215		Bay of Islands, Whangarei & Bream Bay: Scientific Moorings
255/08	T	4314		Manukau Hr.: Depths
258/08	T	63, 64		Lyttelton Hr.: Works in Progress
259/08	T	5225		Great Barrier Island: Marine Farm
260/08	T	21, 23, 25, 43, 48	641, 640, 648	Tasman Sea: Seismic Surveys
261/08	T	25, 64, 66	648	Otago Peninsula: Seismic Surveys
262/08	T	2411		Snares Islands/Tini Heke: Seabed Obstruction
24/09	P	5215		Whangarei Hr.: Lights, Beacons
27/09	T	46, 48, 463, 615		Cook Strait: Scientific Moorings
28/09	T	7142		Greymouth Hr.: Depths
29/09	T	5215		Marsden Point: Beacon, Light
33/09	T			Maritime Safety Broadcasts
37/09	T	561, 5612		Napier Hr.: Dredging Operations
39/09	T	4314, 4315		Manukau Hr.: Light Beacons, Buoys

NZ 30/09 NEW ZEALAND PUBLICATIONS – New Zealand ENC's to be Published Shortly.

<i>ENC Cell</i>	<i>Title</i>
NZ200053	North Island - East Coast - Bream Head to Slipper Island including Hauraki Gulf
NZ300532	North Island - East Coast - Approaches to Auckland
NZ405321	North Island - East Coast - Mahurangi Harbour to Rangitoto
NZ405324	North Island - East Coast - Tamaki Strait and Approaches including Waiheke Island
NZ505322	North Island - East Coast - Auckland Harbour East
NZ505323	North Island - East Coast - Auckland Harbour West
NZ505325	North Island - East Coast - Tamaki River
NZ653221	North Island - East Coast - Auckland Harbour East - Commercial Harbour
NZ653222	North Island - East Coast - Auckland Harbour East - Calliope Wharves
NZ653231	North Island - East Coast - Auckland Harbour West - Kauri Point Wharf
NZ653232	North Island - East Coast - Auckland Harbour West - Chelsea Wharf

Land Information New Zealand
NI 20/2009

NZ NOTICES TO MARINERS
EDITION 2
23 January 2009

NZ 31/09 NEW ZEALAND – North Island – East Coast – Marsden Point – Beacon.

Chart NZ 5214 [141/08]




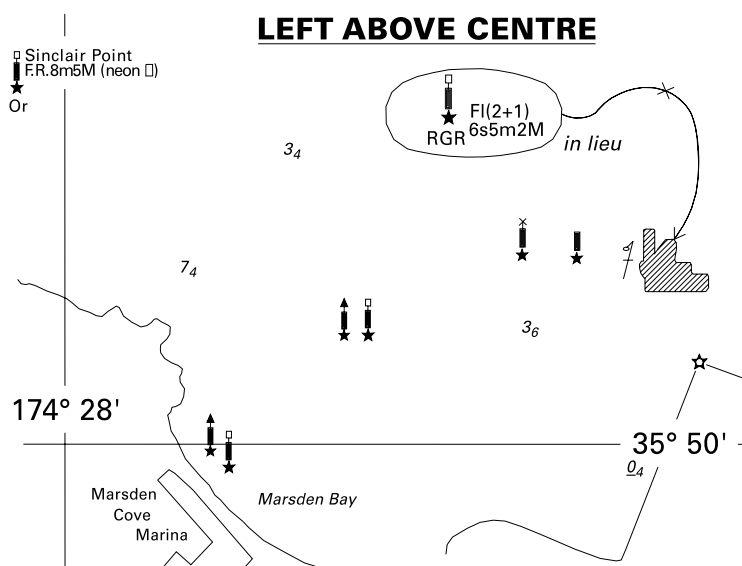
Substitute  FI(2+1)6s5m2M for  Q.R.5m5M 35° 49'.78S., 174° 28'.93E.

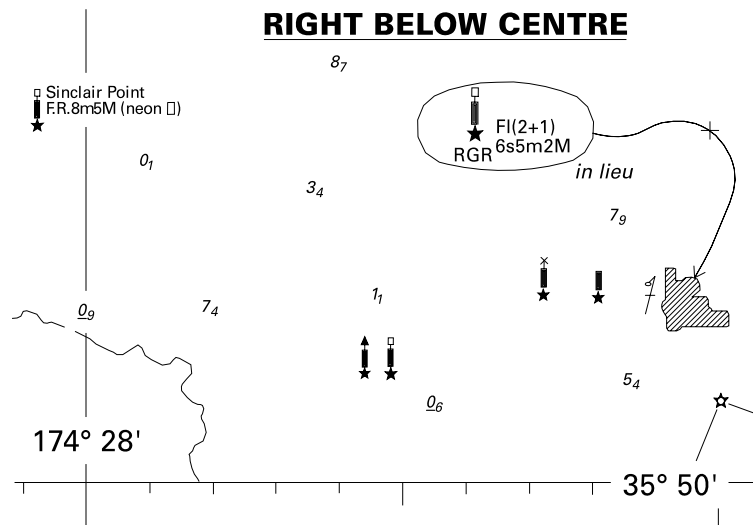
Chart NZ 5215 [141/08]

Substitute  FI(2+1)6s5m2M for  Q.R.5m5M 35° 49'.78S., 174° 28'.93E.

Northland Regional Council
NZ Light List K3716.66
NI 11/2009



<p><i>Issued as a guide to chart correction. Use in conjunction with the appropriate NZ Notice to Mariners.</i></p>		
LAST CORRECTION	NZ NTM No.	CHART No.
NZ 141/08	NZ 31/09	NZ 5214



<i>Issued as a guide to chart correction.</i>		<i>Use in conjunction with the appropriate NZ Notice to Mariners.</i>
LAST CORRECTION	NZ NTM No.	CHART No.
NZ 141/08	NZ 31/09	NZ 5215

NZ 32/09 NEW ZEALAND – North Island – West Coast – Port Taranaki – Lights.

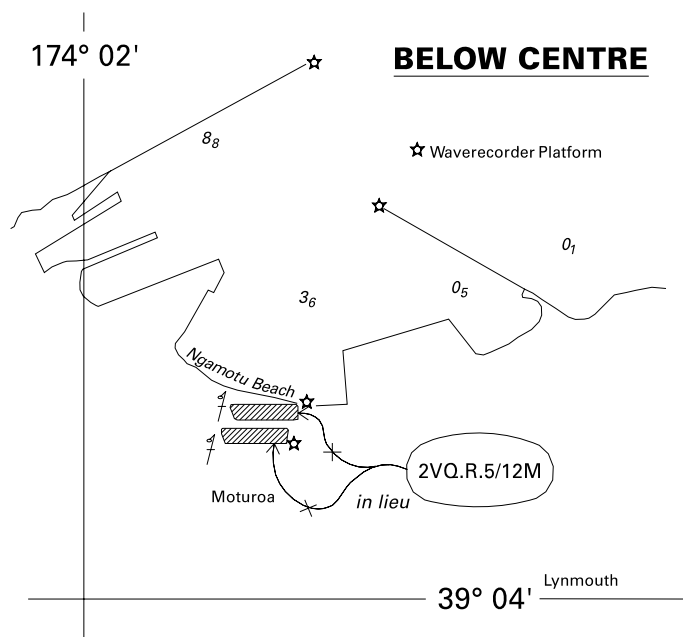
Chart NZ 4432 [Jul 08]

Amend	light to 2VQ.R.5/12M	39° 03'.65S., 174° 02'.51E.
	light to 2VQ.R.5/12M	39° 03'.72S., 174° 02'.48E.

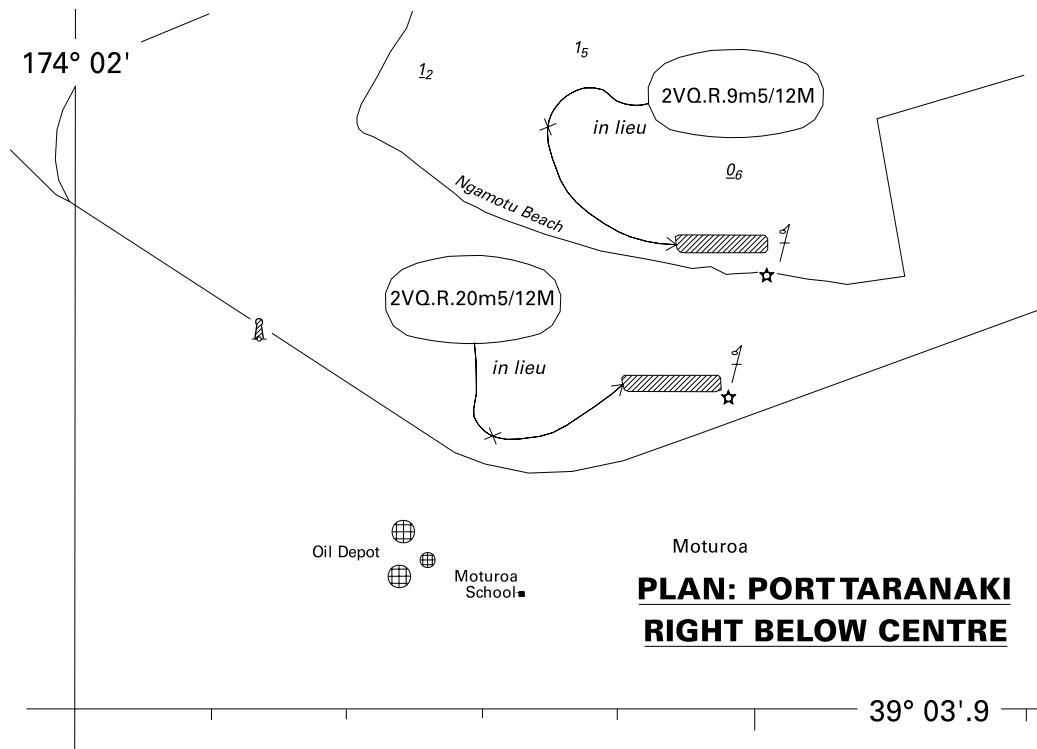
Chart NZ 4432 (plan, Port Taranaki)

Amend	light to 2VQ.R.9m5/12M	39° 03'.65S., 174° 02'.51E.
	light to 2VQ.R.20m5/12M	39° 03'.72S., 174° 02'.48E.

Port Taranaki Ltd
 NZ Light List K4093, 4093.1
 NI 17/2009



<i>Issued as a guide to chart correction. Use in conjunction with the appropriate NZ Notice to Mariners.</i>		
LAST CORRECTION	NZ NTM No.	CHART No.
Jul 08	NZ 32/09	NZ 4432



<i>Issued as a guide to chart correction.</i>		<i>Use in conjunction with the appropriate NZ Notice to Mariners.</i>
LAST CORRECTION	NZ NTM No.	CHART No.
Jul 08	NZ 32/09	NZ 4432

NZ 33(T)/09 NEW ZEALAND – Maritime Safety Broadcasts.

Former notice – NZ 210(T)/08 is cancelled.

Optimum R/T frequencies within Navarea XIV

The accompanying diagrams show the optimum R/T calling and working frequency bands and times for navigational warnings broadcast within 1000 nautical miles of Taupo Maritime Radio (ZLM) (38° 50'S., 176° 00'E. approx.) for the period February to April 2009.

Australian Government IPS Radio and Space Services
NI 07/2009

**NZ 34(T)/09 NEW ZEALAND – North Island – East Coast – Great Barrier Island –
Current Meter Recovered.**

Former notice – NZ 195(T)/08 is cancelled.

Cancel this notice on receipt.

Charts formerly affected – NZ 52 – NZ 53 – NZ 531

University of Waikato
NI 12/2009

NZ 35(T)/09 NEW ZEALAND – North Island – East Coast – Tamaki Strait – Sector Light Operational.

Former notice – NZ 149(T)/08 is cancelled.

Cancel this notice on receipt.

Charts formerly affected – NZ 53 – NZ 532 – NZ 5324

Ports of Auckland Ltd
NZ Light List K3847.5
NI 22/2009

**NZ 36(T)/09 NEW ZEALAND – North Island – East Coast – Hawke Bay – Research Light-Buoy
Recovered.**

Former notice – NZ 234(T)/06 is cancelled.

Cancel this notice on receipt.

Charts formerly affected – NZ 56 – NZ 561

Cawthron Institute
NI 10/2009

NZ 37(T)/09 NEW ZEALAND – North Island – East Coast – Napier Harbour – Dredging Operations.

Former Notice – NZ 203(T)/08 is cancelled.

1. Dredging operations are underway within the Inner Harbour and channel entrance until March 2009 from the backhoe dredge *Combi* accompanied by 2 dump hopper barges and the tug *Manukau*.
2. Dredge spoils will be dumped from the barges in the designated spoil ground north west of the harbour bounded by:
39° 26'.9S., 176° 53'.9E.
39° 27'.6S., 176° 54'.2E.
39° 27'.7S., 176° 53'.9E.
39° 26'.9S., 176° 53'.6E.
3. The tug and barges will exhibit the appropriate lights and shapes for a vessel under tow.
4. The dredge *Combi* and the tug *Manukau* will maintain a listening watch on VHF Channel 12 or 16 and further information may be obtained by contacting Napier Harbour Radio Port Operations also on VHF Channel 12.
5. Mariners are advised to exercise caution when navigating in the area and to give the dredger a wide berth.

Charts temporarily affected – NZ 561 – NZ 5612

Hawke's Bay Regional Council
NI 18/2009

NZ 38(T)/09 NEW ZEALAND – North Island – East Coast – Napier Harbour – Light.

Former notice – NZ 225(T)/08 is cancelled.

Cancel this notice on receipt.

Chart formerly affected – NZ 5612

Hawke's Bay Regional Council
NI 21/2009

NZ 39(T)/09 NEW ZEALAND – North Island – West Coast – Manukau Harbour – Light Beacons, Buoys.

Former Notices – NZ 104(T)/06, 106(T)/08 and 130(T)/08 are cancelled.

1. The Wairopa Channel No.1 beacon, Q(2)G.3s, in position 37° 00'.94S., 174° 36'.74E has been destroyed and replaced with a temporary starboard hand light buoy, Q(2)G.5s.
2. The Manukau Harbour Spit beacon, Fl.G.3s, in position 37° 01'.13S., 174° 36'.98E, has been destroyed and replaced by a temporary starboard hand buoy, Fl.G.3s.
3. The Huia Bank beacon, Fl(2)R.6s, in position 37° 02'.11S., 174° 34'.12E, has been withdrawn until further notice and replaced with a light buoy of the same characteristics.
4. Mariners are advised to exercise caution when navigating in the area.

Charts temporarily affected – NZ 4314 – NZ 4315

Ports of Auckland Ltd
NZ Light List K4108.3, 4116, 4116.1
NI 13/2009

III

CORRECTIONS TO NEW ZEALAND LIGHT LIST (NZ NTM Edition No.2 dated 23 January 2009)

NEW ZEALAND NAUTICAL ALMANAC 2008/09 LIGHT LIST SECTION

3716.66	Marsden Bay - Beacon No 1	35 49.78 174 28.93	Fl(2+1) 6s	5	2	Red □ on beacon 6	Ra refl
		*	*		*		
3847.5	- Iliomama Rock	36 48.50 174 53.20	Q WR	2	W5 R3	Black and white metal pile	R 062°-249.5° (187.5°), W 249.5°-062° (172.5°), Ra refl
							*
4093	- Ldg Lts 197°16'. Front	39 03.65 174 02.51	VQ R	9	12	Orange O on orange pyramid beacon	R strip light 1m long
			VQ R	9	5		
		*	*	*	*		*
4093.1	- - Rear 140 m from front	39 03.72 174 02.48	VQ R	20	12	Orange O on orange pyramid beacon	R strip light 1m long
			VQ R	20	5		
		*	*	*	*		*
4108.3	- - Huia Bank Beacon	37 02.11 174 34.12	Fl(2)R 6s	2	3	Red □ on red metal pile 2	Withdrawn; Fl(2)R 6s light buoy in situ (T) 2009
							*
4116	Spit	37 01.13 174 36.98	Fl G 3s	2	2	Green △ on green steel pile 2	Destroyed; Fl G 3s light buoy in situ (T) 2009
							*
4116.1	- No. 1	37 01.0 174 36.7	Q(2)G 3s			Green △ on green steel pile	Destroyed; Q(2)G 5s in situ (T) 2009
							*

(NI 11,13,17,22/2009)

IV

CORRECTIONS TO PUBLICATIONS (NZ NTM Edition No.2 dated 23 January 2009)

CORRECTIONS TO NEW ZEALAND NAUTICAL ALMANAC (NZ 204), 2008/09 EDITION

PAGE 222, ANNUAL NZ NOTICE TO MARINERS 9
RADIO NAVIGATION WARNINGS, NAVAREA XIV R/T Broadcasts.
Delete and replace by:

Radio Station	Call Sign	Frequency kHz		Time (UTC)
		Calling	Working	
Taupo Maritime Radio	ZLM	6215 12290	6224 12356	03:03, 09:03, 15:03, 21:03
		8291 16420	8297 16531	03:33, 10:03, 15:33, 22:03

(NI 15/2009)

V

NAVIGATIONAL WARNINGS

Navarea XIV warnings in force 21 January 2009

NAVAREA XIV

(South West Pacific)

085/08 SOUTH PACIFIC. VOLUNTARY SHIP REPORTING SYSTEM IN THE NEW ZEALAND SEARCH AND RESCUE AREA SOUTH OF 60° SOUTH.

1. The New Zealand Search and Rescue Authorities have established a voluntary ship reporting system for all vessels operating in the NZSAR region South of 60° South for the purposes of assisting the SAR Authority in coordinating SAR operations in that area.

2. Area covered: 60°S to the Southern edge of the Ross Sea bounded by 163° E. to 131°W.

3. All vessels are requested to notify Taupo Maritime Radio on entry and departure into the area and are also encouraged to make daily position reports. Information provided will be used for SAR purposes only.

4. Taupo Maritime Radio can be contacted on INMARSAT C 582 451 200 067, HF, email maritime@kordia.co.nz or 00 64 4 914 8333.

090/08 SOUTH PACIFIC OCEAN. FIJI, VITI LEVU. LIGHT UNLIT. INT 638.

The following light is reported unlit:

Naikorokoro K4710 17 39.2S 177 22.6E

002/09 RADIO SERVICES.

Mariners are advised that NAVAREA XIV R/T broadcasts from Taupo Maritime Radio (ZLM) will be made at the following times:

0303, 0333, 0903, 1003, 1503, 1533, 2103, 2203 UTC.

003/09 SOUTH PACIFIC OCEAN. WESTERN SAMOA, MULIFANU HARBOUR. SHOALS. CHART NZ 865 (INT 631)

Shoals Located:

A. 3.1 metres 13-48.61S 172-02.61W Undetermined Datum
(13-49.07S 172-02.94W WGS84 Datum)

B. 2.1 metres 13-48.66S 172-02.62W Undetermined Datum
(13-49.12S 172-02.95W WGS84 Datum)

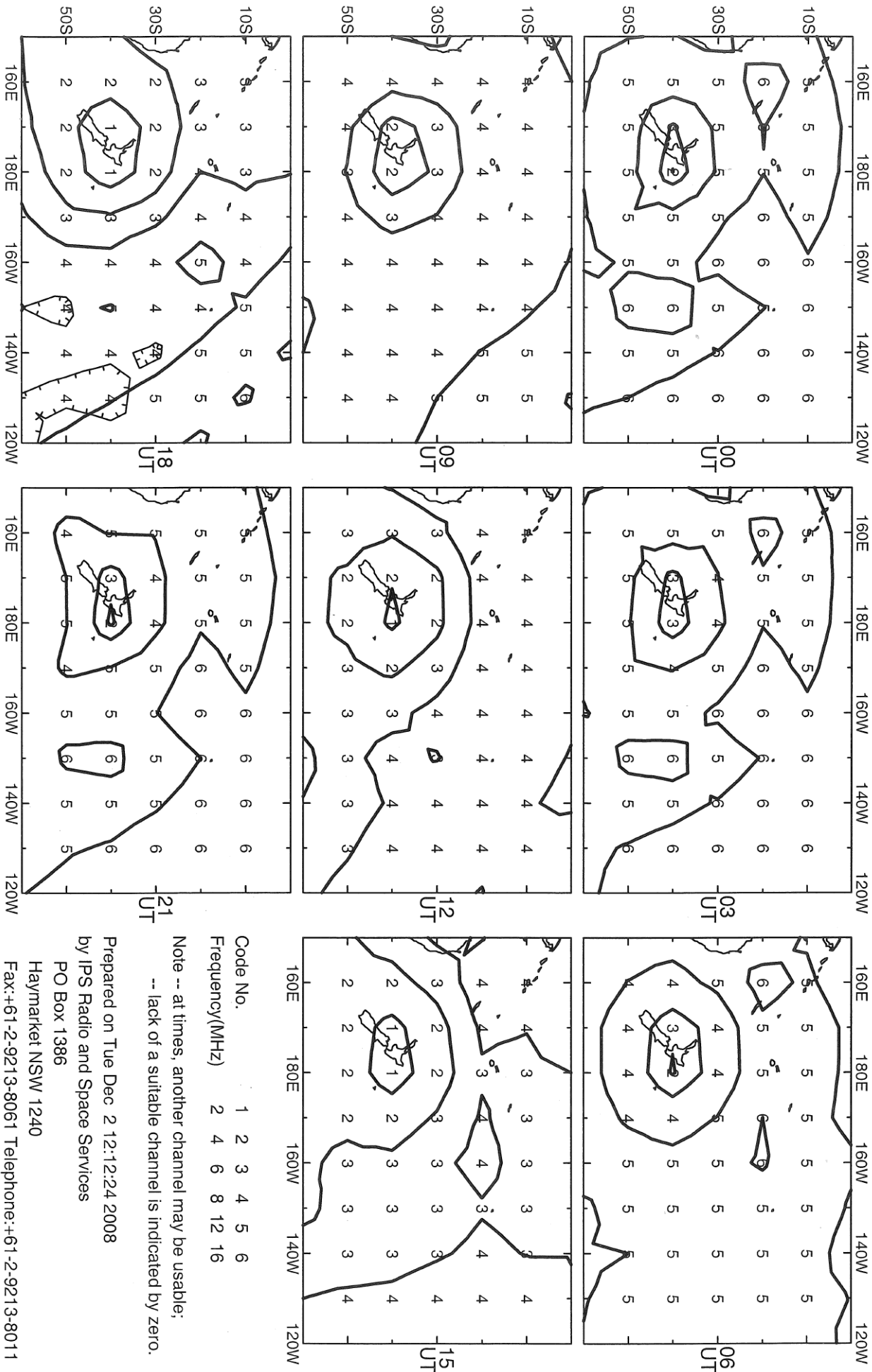
VI

CORRECTIONS TO ADMIRALTY LIST OF RADIO SIGNALS

(NZ NTM Edition No.2 dated 23 January 2009)

Nil

Recommended frequency bands for communication with Taupo FEBRUARY - APRIL 2009



IPS Radio and Space Services
Local Area Mobile Predictions

February–April 2009

NAVAREA XIV

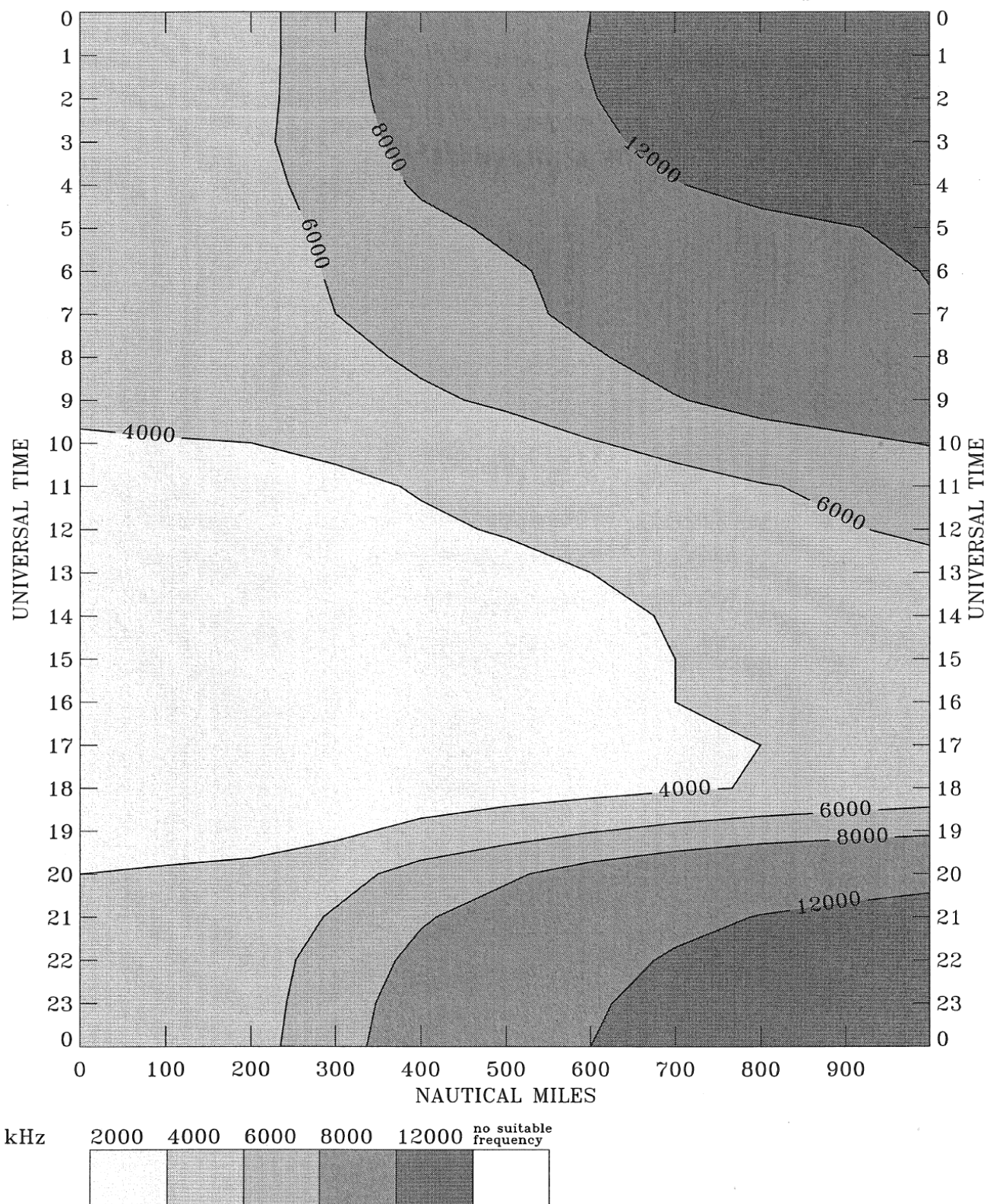


Chart: 1

Address No: 9038