

NEW ZEALAND NOTICES TO MARINERS

Notices

NZ 110 – 119

© Crown Copyright 2009. All rights Reserved. Permission is not required to make analogue copies of these Notices but such copies are not to be sold.

CONTENTS

- I [Explanatory Notes.](#)
- II [New Zealand Notices to Mariners.](#)
- III [Corrections to New Zealand Light List.](#)
- IV [Corrections to Sailing Directions and New Zealand Publications.](#)
- V [Navigational Warnings. \(NAVAREA XIV\)](#)
- VI [Corrections to Admiralty List of Radio Signals.](#)

New Zealand Notices to Mariners are the authority for correcting New Zealand charts within the New Zealand area of charting responsibility as shown in Notice No. 1.

Mariners are requested to immediately inform Land Information New Zealand, Private Box 5501 Wellington 6145, New Zealand Phone : 0800 665 463 or (04) 460-0110 Fax: (04) 460-0161 or e-mail: info@linz.govt.nz, of the discovery of new or suspected dangers to navigation, or shortcomings in charts and publications.

Changes or defects in aids to navigation should be reported to the Rescue Coordination Centre New Zealand (RCCNZ) via the nearest New Zealand Coastal Maritime Radio Station Phone : (04) 577-8030 Fax : (04) 577-8038 or (04) 577-8041 e-mail: rccnz@maritimenz.govt.nz.

Copies of these Notices can be obtained from Land Information New Zealand, Maritime New Zealand, Principal Chart Agents at the major ports of New Zealand and the Internet: <http://www.linz.govt.nz>

EXPLANATORY NOTES

Charts. The notices in Section II give instructions for the correction of charts. Geographical positions refer to the largest scale chart unless otherwise stated. They are normally given in degrees, minutes and decimals of a minute, but may occasionally quote seconds for convenience when plotting from the graduation of some older-style charts. Bearings are true reckoned clockwise from 000° to 359°; those relating to lights are given as seen by an observer from seaward. Symbols referred are those shown in publication Chart 5011 (*INT 1*) Symbols and Abbreviations used on Admiralty Charts, published by the United Kingdom Hydrographic Office.

Alterations to depth contours, deletion of depths to make way for new detail, etc. are not mentioned unless they have some navigational significance.

Blocks or notes accompanying notices in Section II are placed after Section VI.

Temporary and Preliminary Notices. These are indicated by (T) or (P) after the notice number. A list of (T) and (P) Notices in force is published in the fortnightly Editions of Notices to Mariners. Charts are not corrected for them before issue; they should be corrected in pencil on receipt.

Light Lists. The detailed correction to the Light List is given in Section III and may not be published in the same edition as the chart correcting notice. The entire entry for each light is printed, and an asterisk (*) is shown under the column which contains an amendment. In the case of a new light, an asterisk (*) appears under all the columns. New and extensively altered entries are intended to be pasted in. It is recommended that a manuscript entry be made for all shorter corrections.

It is emphasized that the List of Lights is the authority for lights and that many alterations, especially those of a temporary but operational nature, may only be promulgated as corrections to the List of Lights.

Radio Signals. When radio signals are affected by a notice the Admiralty List of Radio Signals reference number is quoted. The detailed correction to the List of Radio Signals is given in Section VI and may be published in a later edition than the chart correcting notice.

Sailing Directions Corrections to Sailing Directions are given in Section IV. It is recommended that such corrections be kept together in a file with the latest list of those in force on top. The file can then be consulted when using the parent book to see if any notices affecting the area under consideration are extant.

Corrections should not be pasted into the parent book or Supplement as corrections may be issued between closing date and issue of a new Supplement. These will be embodied in the text of the following Supplement. A summary of corrections in force will be issued in Section IV of the Fortnightly Edition at monthly intervals.

New Zealand Publications. Corrections to New Zealand Publications are given in Section IV.

Correction of Charts and Publications by the User. New Zealand Notices to Mariners contain important information and should be used to keep the specified charts and books up to date.

THE USE OF CHARTS AND ASSOCIATED PUBLICATIONS

Reliance on Charts and Associated Publications. While every effort is made to ensure the accuracy of the information on New Zealand charts and other publications, it should be appreciated that it may not always be complete and up to date. The mariner must be the final judge of the reliance to be placed on the information given, bearing in mind their particular circumstances, local pilotage guidance and the judicious use of available navigational aids.

Charts. Charts should be used with prudence: there are areas where the source data are old, incomplete or of poor quality. The mariner should use the largest scale appropriate for his particular purpose; apart from being the most detailed, the larger scales are usually corrected first. When extensive new information (such as a new hydrographic survey) is received, some months may elapse before it can be fully incorporated in published charts. On small scale charts of ocean areas where hydrographic information is, in many cases, still sparse, charted shoals may be in error as regards position, least depth and extent. Undiscovered dangers may exist, particularly away from well-established routes.

Further guidance. The Mariner's Handbook (NP 100) gives a fuller explanation of the limitations of charts. All users should study it in their own interest.

II

NUMERICAL INDEX OF CHARTS AFFECTED (NZ NTM Edition No.10 dated 15 May 2009)

NZ Chart No.	NZ Notices	INT Chart No.	Notices
NZ 21 NZ 23 NZ 25 NZ 54 NZ 61 NZ 64 NZ 66 NZ 532 NZ 534 NZ 541 NZ 614 NZ 661 NZ 5321 NZ 5411 NZ 5413 NZ 7142 NZ 8275 (T 8275)	NZ 114(T) NZ 114(T) NZ 117(T) NZ 114(T) NZ 116(T) NZ 117(T) NZ 117(T) NZ 112(T) NZ 114(T) NZ 113(T), 114(T) NZ 115(T), 116(T) NZ 117(T) NZ 112(T) NZ 113(T) NZ 113(T) NZ 111, 119(T) NZ 118(T)		
ENC Cell	Notices		
NZ300443 NZ404432 NZ406142 NZ504432 NZ606142	NZ 110 NZ 110 NZ 110 NZ 110 NZ 110		

NEW ZEALAND TEMPORARY AND PRELIMINARY NOTICES IN FORCE

(NZ NTM Edition No.10 dated 15 May 2009)

NZ Notice	T/P	Charts Affected		Locality and Subject
		NZ	INT	
133/01	T	6612		Otago Hr.: Shoaling
180/03	T	6154		Picton Hr.: Shoal Depths.
129/04	T	52, 53, 522, 5227		Hauraki Gulf: Dredging Operations
194/04	P	46, 48, 61, 463, 614, 6151, 6152, 6153, 6154		Marlborough Sounds: Use of Automated Navigation Systems
110/05	T	8248		Tonga: Light Unlit
161/05	P	4633, 4634		Wellington Hr.: Navigation Safety Bylaw
173/05	T	53, 54, 531, 534, 5318		Whitianga Hr.: Sandbar
36/06	T	5215		Whangarei Hr.: Shoaling
176/06	T	23, 26, 56, 14060, 14600	60, 600, 640	N. Island, E. Coast: Scientific Instruments
177/06	T			Indian Ocean: Operation 'Enduring Freedom'
205/06	T	532, 5324		Tamaki Strait: Motuihe Is.: E. Cardinal Lt Beacon
213/06	P	6153, 6154		Picton Hr.: Lights
244/06	T	23, 25, 63, 64	640, 648	Lyttelton Hr.: Waverider Buoy
37/07	T	53, 532, 533, 5327		Firth of Thames: Moorings, Research Instruments
56/07	T	73		Jackson Bay: Dolphin Monitoring Sensors
63/07	T	4633		Wellington Hr.: Race Marker Buoys
80/07	T	845, 14630, 14631	630, 631	Niue Is.: Navigational Aids, Lights
219/07	P	54, 542		Bay of Plenty, Opotiki: Fish Haven
20/08	T	54, 542		Bay of Plenty: Research Instruments
35/08	T	614		Motueka River: Current Meter
91/08	P	4424		W. Coast, Taharoa Hr.: Hr. Limits
131/08	T	68, 69, 681		Foveaux Strait, Ruapuke Is.: Seabed Obstruction
132/08	T	14051, 14052, 14060, 14061, 14604, 14605, 14606, 14607, 14629	51, 52, 60, 61, 604, 605, 606, 607, 629	North, South Pacific Ocean: ATLAS Buoys
147/08	T	6321		Lyttelton Hr.: Works in Progress
216/08	T	45, 48		S. Taranaki Bight: Drilling Operations
237/08	T	632, 6321		Lyttelton Hr.: Buoys, Lights
243/08	P	5612		Napier Hr.: New Wharf Development
244/08	P	632, 6321		Banks Peninsula: Mussel Farms
245/08	P	614		Tasman Bay: Mussel Farm
251/08	T	522, 5225		Great Barrier Island: Beacon, Light
258/08	T	63, 64		Lyttelton Hr.: Works in Progress
259/08	T	5225		Great Barrier Island: Marine Farm
262/08	T	2411		Snares Islands/Tini Heke: Seabed Obstruction
24/09	P	5215		Whangarei Hr.: Lights, Beacons
39/09	T	4314, 4315		Manukau Hr.: Light Beacons, Buoys
45/09	T	5214		Marsden Point: Works in Progress
48/09	T	6321		Sumner Head: Buoy
61/09	T	43, 48, 443		North Taranaki Bight: Underwater Operations
78/09	T	43, 443		North Taranaki Bight: Waverider Buoy
79/09	T	21, 23, 42, 43	640, 641	Tasman Sea: Seismic Survey
80/09	T	21, 23, 43, 4424	640, 641	Taharoa Offshore Terminal: Buoy, Light
95/09	T	521		Bream Bay: Scientific Moorings
96/09	T	532, 5321, 5322		Hauraki Gulf: Works in Progress
97/09	T	4314		Manukau Hr.: Depths
103/09	T			Maritime Safety Broadcasts
105/09	T	23, 25, 62, 63		Kaikoura Peninsula: Scientific Moorings
106/09	T	6321		Lyttelton Hr.: Dredging Operations
107/09	P	6612		Otago Hr: Lights
113/09	T	541, 5411, 5413		Mount Maunganui: Current Meters
114/09	T	21, 23, 54, 534, 541		Mayor Island: Light
117/09	T	25, 64, 66, 661		Cape Saunders Southwards: Waverider Buoy
118/09	T	8275 (T 8275)		Tonga, Nuku'alofa Hr.: Light
119/09	T	7142		Greymouth Hr.: Depths

NZ 110/09 NEW ZEALAND PUBLICATIONS – New Zealand ENC's to be Published Shortly.

<i>ENC Cell</i>	<i>Title</i>
NZ406142	NZ6142 - South Island - North Coast - Nelson Harbour and Entrance
NZ606142	NZ6142 - South Island - North Coast - Port Nelson
NZ300443	NZ443 - North Island - West Coast - Approaches to Port Taranaki
NZ404432	NZ4432 - North Island - West Coast - Taranaki Roads
NZ504432	NZ4432 - North Island - West Coast - Port Taranaki

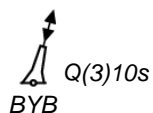
Land Information New Zealand
NI 106/2009

NZ 111/09 NEW ZEALAND – South Island – West Coast – Greymouth Harbour – Erua Moana Lagoon – Buoy, Light.

Former notice – NZ 98(T)/08 is cancelled.

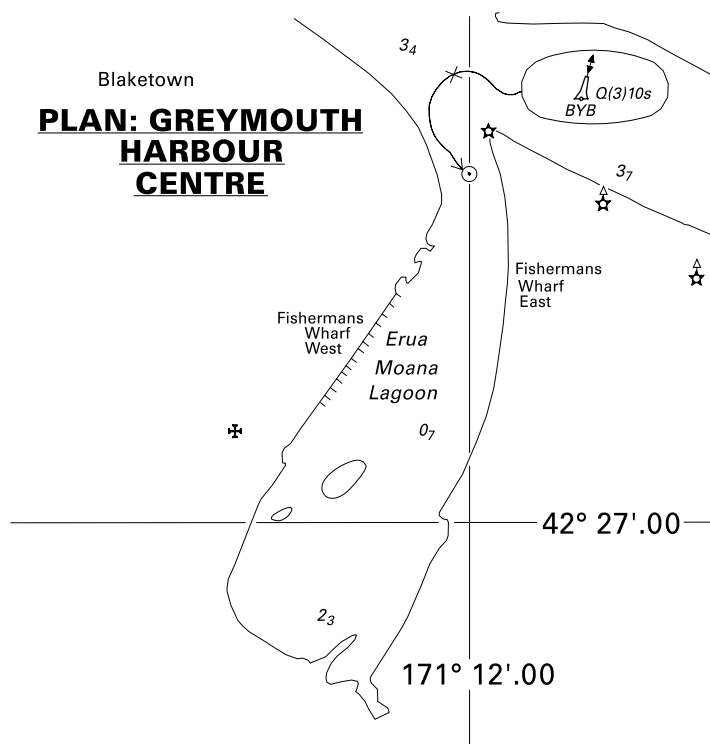
Chart NZ 7142 (Plan, Greymouth Harbour) [263/97]

Insert



42° 26'.75S., 171° 12'.00E.

Grey District Council
 NI 105/2009



<i>Issued as a guide to chart correction.</i>		<i>Use in conjunction with the appropriate NZ Notice to Mariners.</i>
LAST CORRECTION	NZ NTM No.	CHART No.
NZ 263/97	NZ 111/09	NZ 7142

**NZ 112(T)/09 NEW ZEALAND – North Island – East Coast – Whangaparaoa – Scientific Instruments
Recovered.**

Former notice – NZ 59(T)/09 is cancelled.

Cancel this notice on receipt.

Charts formerly affected – NZ 532 – NZ 5321

NIWA

NI 103/2009

NZ 113(T)/09 NEW ZEALAND – North Island – East Coast – Mount Maunganui – Current Meters.

1. Three current meters have been deployed in the following positions until June 2009:
 - a. 37° 38'.00S., 176° 12'.70E.
 - b. 37° 38'.70S., 176° 12'.14E.
 - c. 37° 38'.67S., 176° 12'.18E.
2. Mariners are advised to exercise caution when navigating in the area.

Charts temporarily affected – NZ 541 – NZ 5411 – NZ 5413

The University of Waikato
NI 101/2009

NZ 114(T)/09 NEW ZEALAND – North Island – East Coast – Mayor Island – Light.

1. The Mayor Island (Tuhua) light, Fl(3)WR.15s30m7/4M, in position 37° 18'.62S., 176° 15'.51E. is temporarily extinguished until further notice.
2. Mariners are advised to exercise caution when navigating in the area.

Charts temporarily affected – NZ 21 – NZ 23 – NZ 54 – NZ 534 – NZ 541

Environment Bay of Plenty
NZ Light List K3898
NI 100/2009

NZ 115(T)/09 NEW ZEALAND – South Island – North Coast – Tasman Bay – Current Meter Recovered.

Former notice – NZ 109(T)/09 is cancelled.

Cancel this notice on receipt.

Chart formerly affected – NZ 614

Cawthron Institute
NI 108/2009

**NZ 116(T)/09 NEW ZEALAND – South Island – North Coast – Tasman Bay and Golden Bay –
Seasonal Spat Catching Areas Removed.**

Former notices – NZ 221(T)/08 & NZ 233(T)/08 are cancelled.

Cancel this notice on receipt.

Charts formerly affected – NZ 61 – NZ 614

Golden Bay Ring Road Ltd, Tasman Bay Ring Road Ltd and Challenger Scallop Enhancement Co. Ltd
NI 99/2009

NZ 117(T)/09 NEW ZEALAND – South Island – East Coast – Cape Saunders Southwards – Waverider Buoy.

1. A waverider buoy, *FI(5)Y.20s* has been deployed in position 45° 59'.88S., 170° 51'.54E. until November 2009.
2. Mariners are advised to exercise caution when navigating in the area.

Charts temporarily affected – NZ 25 – NZ 64 – NZ 66 – NZ 661

MetOcean Solutions Ltd
NI 102/2009

NZ 118(T)/09 SOUTH PACIFIC OCEAN – Tonga – Tongatapu – Nuku'alofa Harbour – Light.

1. The Boat Harbour light, Fl.R.4s5m2M in position 21° 08'.24S., 175° 11'.03W. is extinguished until further notice.
2. Mariners are advised to exercise caution when navigating in the area.

Chart temporarily affected – NZ 8275 (T 8275)

Land Information New Zealand
BA Light List K4649.3
NI 107/2009

NZ 119(T)/09 NEW ZEALAND – South Island – West Coast – Greymouth Harbour Entrance – Depths.

Former notice – NZ 108(T)/09 is cancelled.

1. A recent survey (11 May 2009) indicates the following depths below CD on the bar at the Grey River entrance:

North Transit Lead	2.8m	42° 26'.32S., 171° 11'.39E.
Central Transit Lead	2.8m	42° 26'.35S., 171° 11'.40E.
South Transit Lead	3.0m	42° 26'.36S., 171° 11'.40E.

2. Mariners should be aware that depths in Greymouth Harbour entrance are constantly changing and should contact the Harbourmaster for the latest conditions on (027) 435 3424 or (03) 768 5666 or Greymouth Harbour Radio Ch14.

Chart temporarily affected – NZ 7142

Port of Greymouth
NI 109/2009

III

CORRECTIONS TO NEW ZEALAND LIGHT LIST

(NZ NTM Edition No.10 dated 15 May 2009)

NEW ZEALAND NAUTICAL ALMANAC 2008/09 LIGHT LIST SECTION

3898	Mayor Island (Tuhua)	37 18.62 176 15.51	Fl(3)WR 15s	30	W7 R4	White metal column 4	(fl 0.5, ec 1) x 2, fl 0.5, ec 11.5. W 236°-248.5° (12.5°), R 248.5°-274.5° (26°), W 274.5°-094.5° (180°) TE (2009)
		*					*

(NI 100/2009)

IV

CORRECTIONS TO PUBLICATIONS

(NZ NTM Edition No.10 dated 15 May 2009)

Nil

V

NAVIGATIONAL WARNINGS

Navarea XIV warnings in force 13 May 2009

NAVAREA XIV

(South West Pacific)

- 024/09 SOUTH PACIFIC. CHART NZ22 (INT 639)
1. Underwater earthquake activity reported in vicinity 25-53S 177-11W.
 2. Mariners are advised gas may be present at the sea surface and to keep watch for discoloured water.

VI

CORRECTIONS TO ADMIRALTY LIST OF RADIO SIGNALS

(NZ NTM Edition No.10 dated 15 May 2009)

Nil