

NEW ZEALAND NOTICES TO MARINERS

Notices

NZ 216 – 224

© Crown Copyright 2009. All rights Reserved. Permission is not required to make analogue copies of these Notices but such copies are not to be sold.

CONTENTS

- I [Explanatory Notes.](#)
- II [New Zealand Notices to Mariners.](#)
- III [Corrections to New Zealand Light List.](#)
- IV [Corrections to Sailing Directions and New Zealand Publications.](#)
- V [Navigational Warnings. \(NAVAREA XIV\)](#)
- VI [Corrections to Admiralty List of Radio Signals.](#)

New Zealand Notices to Mariners are the authority for correcting New Zealand charts within the New Zealand area of charting responsibility as shown in Notice No. 1.

Mariners are requested to immediately inform Land Information New Zealand, PO Box 5501 Lambton Quay, Wellington 6145, New Zealand Phone : 0800 665 463 or (04) 460-0110 Fax: (04) 460-0161 or e-mail: info@linz.govt.nz, of the discovery of new or suspected dangers to navigation, or shortcomings in charts and publications. A copy of a Hydrographic Note, a convenient form on which to send such information, is included at the end of Section VI of the Fortnightly Notices to Mariners.

Changes or defects in aids to navigation should be reported to the Rescue Coordination Centre New Zealand (RCCNZ) via the nearest New Zealand Coastal Maritime Radio Station Phone : (04) 577-8030 Fax : (04) 577-8038 or (04) 577-8041 e-mail: rccnz@maritimenz.govt.nz.

Copies of these Notices can be obtained from Land Information New Zealand, Maritime New Zealand, Principal Chart Agents at the major ports of New Zealand and the Internet: www.linz.govt.nz

EXPLANATORY NOTES

Charts. The notices in Section II give instructions for the correction of charts. Geographical positions refer to the largest scale chart unless otherwise stated. They are normally given in degrees, minutes and decimals of a minute, but may occasionally quote seconds for convenience when plotting from the graduation of some older-style charts. Bearings are true reckoned clockwise from 000° to 359°; those relating to lights are given as seen by an observer from seaward. Symbols referred are those shown in publication Chart 5011 (*INT 1*) Symbols and Abbreviations used on Admiralty Charts, published by the United Kingdom Hydrographic Office.

Alterations to depth contours, deletion of depths to make way for new detail, etc. are not mentioned unless they have some navigational significance.

Blocks or notes accompanying notices in Section II are placed after Section VI.

Temporary and Preliminary Notices. These are indicated by (T) or (P) after the notice number. A list of (T) and (P) Notices in force is published in the fortnightly Editions of Notices to Mariners. Charts are not corrected for them before issue; they should be corrected in pencil on receipt.

Light Lists. The detailed correction to the Light List is given in Section III and may not be published in the same edition as the chart correcting notice. The entire entry for each light is printed, and an asterisk (*) is shown under the column which contains an amendment. In the case of a new light, an asterisk (*) appears under all the columns. New and extensively altered entries are intended to be pasted in. It is recommended that a manuscript entry be made for all shorter corrections.

It is emphasized that the List of Lights is the authority for lights and that many alterations, especially those of a temporary but operational nature, may only be promulgated as corrections to the List of Lights.

Radio Signals. When radio signals are affected by a notice the Admiralty List of Radio Signals reference number is quoted. The detailed correction to the List of Radio Signals is given in Section VI and may be published in a later edition than the chart correcting notice.

Sailing Directions. Corrections to Sailing Directions are given in Section IV. It is recommended that such corrections be kept together in a file with the latest list of those in force on top. The file can then be consulted when using the parent book to see if any notices affecting the area under consideration are extant.

Corrections should not be pasted into the parent book or Supplement as corrections may be issued between closing date and issue of a new Supplement. These will be embodied in the text of the following Supplement. A summary of corrections in force will be issued in Section IV of the Fortnightly Edition at monthly intervals.

New Zealand Publications. Corrections to New Zealand Publications are given in Section IV.

Correction of Charts and Publications by the User. New Zealand Notices to Mariners contain important information and should be used to keep the specified charts and books up to date.

THE USE OF CHARTS AND ASSOCIATED PUBLICATIONS

Reliance on Charts and Associated Publications. While every effort is made to ensure the accuracy of the information on New Zealand charts and other publications, it should be appreciated that it may not always be complete and up to date. The mariner must be the final judge of the reliance to be placed on the information given, bearing in mind their particular circumstances, local pilotage guidance and the judicious use of available navigational aids.

Charts. Charts should be used with prudence: there are areas where the source data are old, incomplete or of poor quality. The mariner should use the largest scale appropriate for his particular purpose; apart from being the most detailed, the larger scales are usually corrected first. When extensive new information (such as a new hydrographic survey) is received, some months may elapse before it can be fully incorporated in published charts. On small scale charts of ocean areas where hydrographic information is, in many cases, still sparse, charted shoals may be in error as regards position, least depth and extent. Undiscovered dangers may exist, particularly away from well-established routes.

Further guidance. The Mariner's Handbook (NP 100) gives a fuller explanation of the limitations of charts. All users should study it in their own interest.

NEW ZEALAND TEMPORARY AND PRELIMINARY NOTICES IN FORCE

(NZ NTM Edition No.24 dated 27 November 2009)

NZ Notice	T/P	Charts Affected	Locality and Subject
		NZ Chart, INT Chart, ENC Cell	
133/01	T	NZ 6612	Otago Hr.: Shoaling
180/03	T	NZ 6154	Picton Hr.: Shoal Depths
129/04	T	NZ 52, 53, 522, 5227	Hauraki Gulf: Dredging Operations
194/04	P	NZ 46, 48, 61, 463, 614, 6151, 6152, 6153, 6154	Marlborough Sounds: Use of Automated Navigation Systems
110/05	T	NZ 8248	Tonga: Light Unlit
161/05	P	NZ 4633, 4634	Wellington Hr.: Navigation Safety Bylaw
173/05	T	NZ 53, 54, 531, 534, 5318	Whitianga Hr.: Sandbar
176/06	T	NZ 23, 26, 56, 14060, 14600, INT 60, 600, 640	N. Island, E. Coast: Scientific Instruments
177/06	T		Indian Ocean: Operation 'Enduring Freedom'
205/06	T	NZ 532, 5324	Tamaki Strait: Motuihe Is.: E. Cardinal Lt Beacon
213/06	P	NZ 6153, 6154	Picton Hr.: Lights
244/06	T	NZ 23, 25, 63, 64, INT 640, 648	Lyttelton Hr.: Waverider Buoy
37/07	T	NZ 53, 532, 533, 5327	Firth of Thames: Moorings, Research Instruments
63/07	T	NZ 4633	Wellington Hr.: Race Marker Buoys
219/07	P	NZ 54, 542	Bay of Plenty, Opotiki: Fish Haven
91/08	P	NZ 4424	W. Coast, Taharoa Hr.: Hr. Limits
131/08	T	NZ 68, 69, 681	Foveaux Strait, Ruapuke Is.: Seabed Obstruction
132/08	T	NZ 14051, 14052, 14060, 14061, 14604, 14605, 14606, 14607, 14629, INT 51, 52, 60, 61, 604, 605, 606, 607, 629	North, South Pacific Ocean: ATLAS Buoys
243/08	P	NZ 5612	Napier Hr.: New Wharf Development
244/08	P	NZ 632, 6321	Banks Peninsula: Mussel Farms
259/08	T	NZ 5225	Great Barrier Island: Marine Farm
262/08	T	NZ 2411	Snares Islands/Tini Heke: Seabed Obstruction
39/09	T	NZ 4314, 4315	Manukau Hr.: Light Beacons, Buoys
96/09	T	NZ 532, 5321, 5322	Hauraki Gulf: Works in Progress
117/09	T	NZ 25, 64, 66, 661	Cape Saunders Southwards: Waverider Buoy
118/09	T	NZ 8275 (T 8275)	Tonga, Nuku'alofa Hr.: Light
123/09	T	NZ 4634, NZ546342	Wellington Hr.: Light, Beacon
138/09	T	NZ 23, 25, 62, 63, INT 640, 648	Kaikoura Peninsula: Scientific Moorings
139/09	T	NZ 845, 14630, 14631, INT 630, 631	Nuie Is: Lights
143/09	T	NZ 5322, 5323, NZ505322	Auckland Hr.: Vertical Clearance
155/09	T	NZ 5125	Bay of Islands: Light
164/09	T	NZ 4314, NZ404314	Manukau Hr.: Depths
182/09	T	NZ 51, 512, 5125	Bay of Islands: Scientific Moorings
184/09	T	NZ 614, 6144	Motueka River: Current Meter
188/09	T	NZ 561, 5612, NZ400561, 505612, 605612	Napier Hr.: Dredging Operations
189/09	T	NZ 53, 532, 533, 5327, NZ200053, 305321	Firth of Thames: Scientific Buoy
190/09	T	NZ 632, 6321	Lyttelton Hr.: Dredging Operations
194/09	T	NZ 512, 521, 522, 5113, 5114, 5125, 5214, 5215	Rangitoto Channel: Light
195/09	T	NZ 6321	Rangitoto Channel: Light
196/09	T	NZ 7142	Sumner Head: Buoy
200/09	T		Greymouth Hr.: Depths
202/09	T	NZ 53, 532, 5322, 5324, 5325, NZ305322, 405324, 505322, 505325	Maritime Safety Broadcasts
204/09	T	NZ 43, 443, NZ300443	Rangitoto Channel: Light
205/09	T	NZ 632, 6321	N. Taranaki Bight: Waverider Buoy.
215/09	T	NZ 63, 64	Lyttelton Hr.: Current Meter
219/09	T	NZ 5125	Lyttelton Hr.: Works in Progress
220/09	T	NZ 21, 22, 23, 53, 54, 531, 534, 5318, INT 639, 640, 641, NZ20022E, 200023, 300053	Bay of Islands: Scientific Moorings
221/09	T	NZ 43, 443, NZ300443	Great Mercury Island: Danger Area
222/09	T	NZ 23, 25, 26, 27, 46, 57, 58, 62, 63, 463, 4633, INT 640, 648, NZ200023, 200025, 300046, 300463, 404633	North Taranaki Bight: Drilling Operations
223/09	T	NZ 61, 614, 6144	Cook Strait Eastwards: Seismic Survey
224/09	T	NZ 25, 64, INT 648, NZ200025	Tasman Bay and Golden Bay: Spat Catching Areas
			Canterbury Basin: Scientific Drilling Operations

NZ 216/09 NEW ZEALAND PUBLICATIONS – New Zealand ENC's Published.

ENC Cell Published Title

NZ300055	Nov 09	NZ300055 - NZ55 - North Island - East Coast - Cape Runaway to Table Cape
NZ400055	Nov 09	NZ400055 - NZ55 - North Island - East Coast - Cape Runaway to Table Cape - Ranfurly Bank
NZ405411	Nov 09	NZ405411 – NZ5411 - North Island - East Coast - Tauranga Harbour - Katikati Entrance to Mount Maunganui
NZ405413	Nov 09	NZ405413 – NZ5413 - North Island - East Coast - Approaches to Tauranga
NZ405571	Nov 09	NZ405571 - NZ5571 - North Island - East Coast - Poverty Bay and Approaches to Gisborne
NZ505412	Nov 09	NZ505412 – NZ5412 - North Island - East Coast - Port of Tauranga
NZ505571	Nov 09	NZ505571 - NZ5571 - North Island - East Coast - Gisborne Harbour and Entrance

README.TXT File

The README.TXT file located within the ENC_ROOT folder of an ENC exchange set contains important safety related information. This file is updated on a regular basis and should be consulted to ensure that all related issues are taken into consideration. The latest README.TXT file is also located on the LINZ website

www.linz.govt.nz/hydro/enc/readme

Use of Electronic Navigational Charts

For compliance with New Zealand legal requirements for nautical charts and publications please refer to Maritime Rules Part 25, as supported by Maritime New Zealand Marine Guidance Notice 8 "Use of Electronic Charts, ECDIS and ENC's in NZ" available from the Maritime New Zealand website www.maritimenz.govt.nz/Commercial/Shipping-safety/Safety-updates/Guidance-notice.aspx.

NZ 217/09 NEW ZEALAND – North Island – East Coast – Bay of Plenty – Volkner Rocks – Marine Reserve.

Chart NZ 542 [73/09]

Insert accompanying block, showing marine reserve, centred on: 37°28'.79S., 177°08'.34E.

Chart NZ 5423 [NE Jul 01]

Insert accompanying block, showing marine reserve, centred on: 37°27'.57S., 177°09'.35E.

Department of Conservation
NI 212/2009

NZ 218/09 SOUTH PACIFIC OCEAN – Kermadec Islands Northwards – Volcanic Activity.

Chart NZ 22 (INT 639) [NE Apr 05]

Amend legend to *Volcanic Activity (2009)*, centred on: 25°53'.5S., 176°58'.5W.

Chart NZ 223F [249/08]

Amend legend to *Volcanic Activity (2009)*, centred on: 25°55'S., 177°21'W.

Chart NZ 14605 (INT 605) [143/08]

Amend legend to *Volcanic Activity (2009)*, centred on: 25°55'S., 177°24'W.

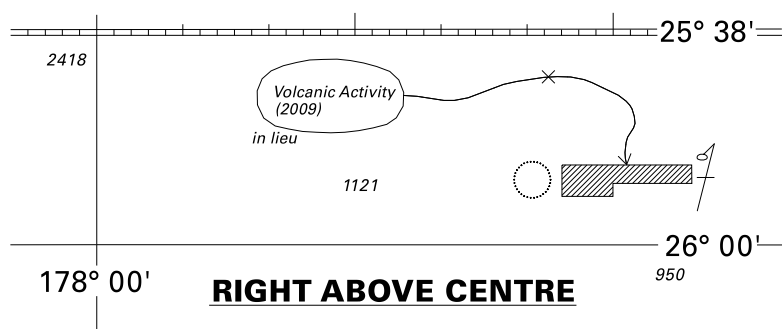
Chart NZ 14631 (INT 631) [143/08]

Amend legend to *Volcanic Activity (2009)*, centred on: 25°53'S., 176°59'W.

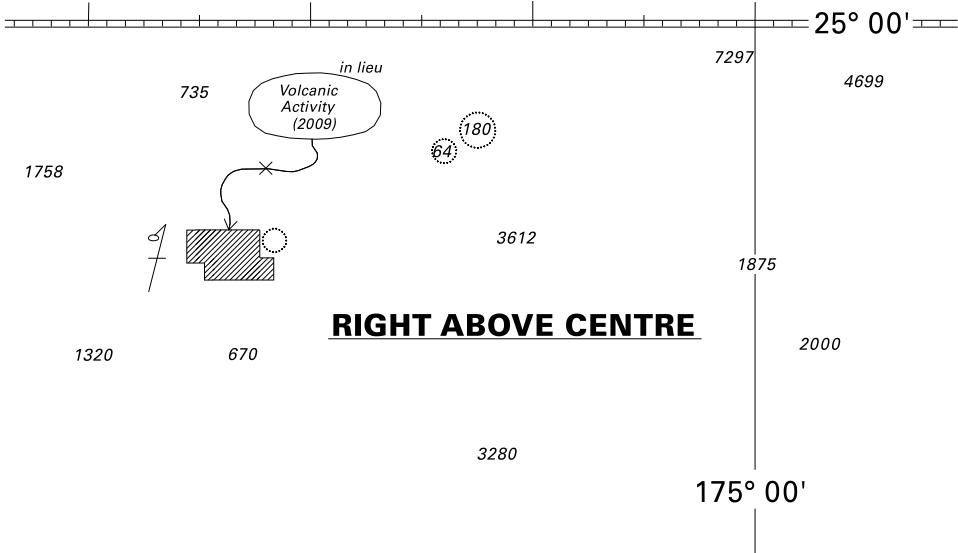
Chart NZ 14638 (INT 638) [143/08]

Amend legend to *Volcanic Activity (2009)*, centred on: 25°53'S., 176°59'W.

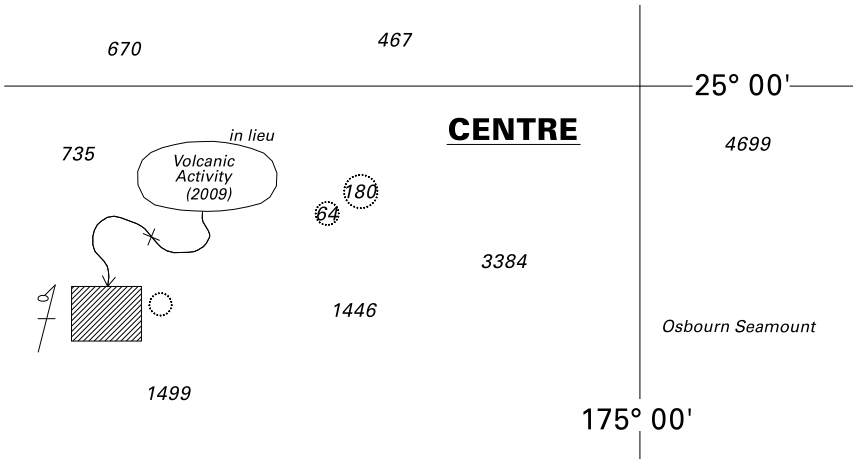
Land Information New Zealand
 NI 237/2009



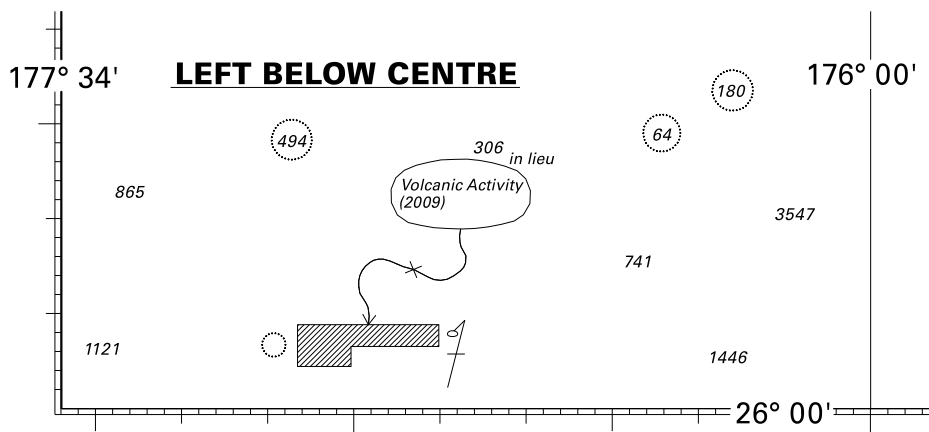
<i>Issued as a guide to chart correction.</i>		<i>Use in conjunction with the appropriate NZ Notice to Mariners.</i>
LAST CORRECTION	NZ NTM No.	CHART No.
NE Apr 05	NZ 218/09	NZ 22 (INT 639)



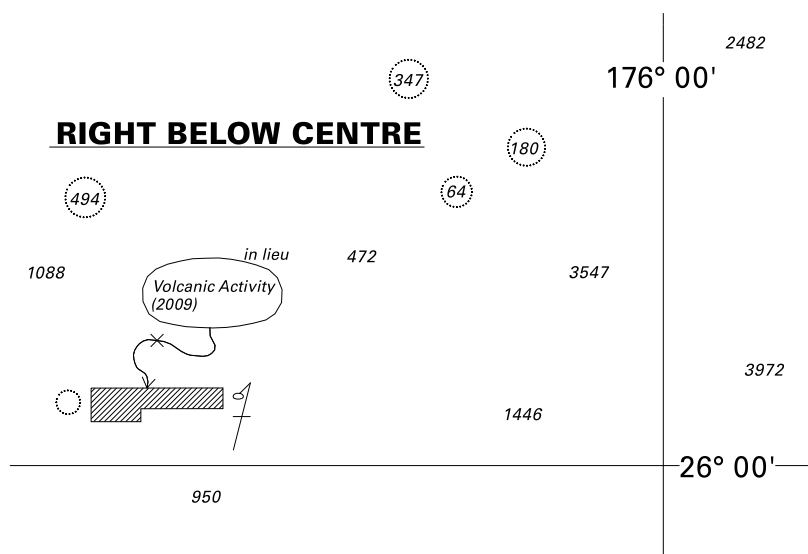
Issued as a guide to chart correction.		Use in conjunction with the appropriate NZ Notice to Mariners.
LAST CORRECTION	NZ NTM No.	CHART No.
NZ 249/08	NZ 218/09	NZ 223F



Issued as a guide to chart correction.		Use in conjunction with the appropriate NZ Notice to Mariners.
LAST CORRECTION	NZ NTM No.	CHART No.
NZ 143/08	NZ 218/09	NZ 14605 (INT 605)



<i>Issued as a guide to chart correction.</i>		<i>Use in conjunction with the appropriate NZ Notice to Mariners.</i>
LAST CORRECTION	NZ NTM No.	CHART No.
NZ 143/08	NZ 218/09	NZ 14631 (INT 631)



<i>Issued as a guide to chart correction.</i>		<i>Use in conjunction with the appropriate NZ Notice to Mariners.</i>
LAST CORRECTION	NZ NTM No.	CHART No.
NZ 143/08	NZ 218/09	NZ 14638 (INT 638)

NZ 219(T)/09 NEW ZEALAND – North Island – East Coast – Bay of Islands – Scientific Moorings.

1. Scientific moorings, marked by unlit orange buoys, have been deployed until further notice at the following locations:

Urupukapuka Channel	35° 13'.20S.,	174° 13'.11E.
	35° 13'.18S.,	174° 13'.17E.
	35° 13'.16S.,	174° 13'.11E.
Poroporo Island	35° 13'.90S.,	174° 13'.14E.
	35° 13'.88S.,	174° 13'.23E.
	35° 13'.91S.,	174° 13'.27E.
Ngatokaparangi Island	35° 13'.62S.,	174° 12'.69E.
	35° 13'.58S.,	174° 12'.68E.
	35° 13'.57S.,	174° 12'.71E.
Omakiwi Cove	35° 14'.38S.,	174° 14'.45E.
	35° 14'.38S.,	174° 14'.51E.
Kapurarahurahu Point	35° 13'.68S.,	174° 13'.90E.
	35° 13'.67S.,	174° 13'.85E.
Parorenui Bay	35° 14'.76S.,	174° 13'.75E.
	35° 14'.77S.,	174° 13'.75E.

2. Mariners are advised to exercise caution when navigating in the area.

Charts temporarily affected – NZ 5125

NIWA
 NI 243/2009

NZ 220(T)/09 NEW ZEALAND – North Island – East Coast – Great Mercury Island – Temporary Danger Area.

1. Between 30 November and 4 December 2009, a rocket will be launched in Temporary Danger Area NZD293, bounded by the following co-ordinates:
36°35'S., 175°47'E.
36°20'S., 175°50'E.
35°50'S., 175°50'E.
35°50'S., 177°00'E.
37°00'S., 177°00'E.
37°00'S., 176°25'E.
2. Falling debris may cause a hazard to surface navigation and mariners are advised to exercise caution when navigating in the area.

Charts temporarily affected – NZ 21 (INT 641) – NZ 22 (INT 639) – NZ 23 (INT 640) – NZ 53 – NZ 54 – NZ 531 – NZ 534 – NZ 5318 – NZ20022E – NZ200023 – NZ300053

Rocket Lab Ltd.
NI 239/2009

NZ 221(T)/09 NEW ZEALAND – North Island – West Coast – North Taranaki Bight – Drilling Operations.

1. Until further notice drilling activities will be performed by the *ENSCO 107* Jack-Up Drilling Rig (call sign A8GS5) at the Albacore-1 well location north of Cape Egmont, in position 38°26'.95S., 174°01'.54E.
2. The MV *Pacific Warlock* (call sign 9VKQ4) and MV *Yeo Tide* (call sign YJUM6) will be servicing the jack up drilling rig.
3. Mariners are requested to exercise caution when navigating in this area. Vessels should keep at least 5 nautical miles clear of the rig.

Charts temporarily affected – NZ 43 – NZ 443 – NZ300443

Westech Energy
NI 232/2009

NZ 222(T)/09 NEW ZEALAND – Cook Strait Eastwards – Seismic Survey.

1. From November until further notice the MV *Bergen Resolution* (call sign LAJH6) will undertake seismic work in the area bounded by the following coordinates:
40° 45'.0S., 176° 15'.6E.
40° 45'.0S., 177° 19'.8E.
43° 07'.8S., 177° 19'.8E.
43° 07'.8S., 173° 56'.4E.
42° 06'.0S., 173° 56'.4E.
41° 24'.6S., 174° 52'.2E.
2. The MV *Bergen Resolution* will be deploying a streamer up to 12km long marked by a lit yellow tail buoy and is restricted in its ability to manoeuvre. All vessels are requested to pass at least 5NM clear of the vessel and tail buoy.
3. The MV *Ocean Pioneer* (call sign ZM2582) will act as the support vessel to the MV *Bergen Resolution*.
4. MV *Bergen Resolution* will be monitoring VHF channel 16.
5. Mariners are requested to exercise caution when navigating in the area.

Charts temporarily affected – NZ 23 (INT 640) – NZ 25 (INT 648) – NZ 26 – NZ 27 – NZ 46 – NZ 57 – NZ 58 – NZ 62 – NZ 63 – NZ 463 – NZ 4633 – NZ200023 – NZ200025 – NZ300046 – NZ300463 – NZ404633

Ministry of Economic Development
NI 234/2009

NZ 223(T)/09 NEW ZEALAND – South Island – North Coast – Tasman Bay and Golden Bay – Spat Catching Areas.

Former notice – NZ 211(T)/09 is cancelled.

1. Seasonal Spat catching areas have been established in Tasman Bay and Golden Bay until April 2010. The perimeter corners are identified by cardinal marks at the following positions:

Tasman Bay 41°03'.32S., 173°07'.21E.
 41°04'.55S., 173°08'.24E.
 41°04'.38S., 173°04'.89E.
 41°05'.60S., 173°05'.91E.

Golden Bay 40°45'.11S., 172°50'.88E.
 40°46'.03S., 172°52'.88E.
 40°46'.66S., 172°49'.33E.
 40°47'.61S., 172°51'.33E.

 40°41'.88S., 172°44'.97E.
 40°42'.04S., 172°46'.27E.
 40°43'.05S., 172°46'.40E.
 40°42'.88S., 172°45'.13E.

2. Mariners are requested to exercise caution when navigating in the area.

Charts temporarily affected – NZ 61 – NZ 614 – NZ 6144

Golden Bay Ring Road Limited, Tasman Bay Ring Road Limited and Golden Bay Mussels Limited
NI 236/2009

NZ 224(T)/09 NEW ZEALAND – South Island – East Coast – Canterbury Basin – Scientific Drilling Operations.

1. From November until further notice the scientific drilling vessel *JOIDES Resolution* (call sign D5BC) will undertake scientific drilling operations in the area bounded by the following coordinates:
44° 41'.5S., 171° 40'.4E.
45° 02'.2S., 171° 40'.4E.
45° 02'.2S., 172° 33'.9E.
44° 41'.5S., 172° 33'.9E.
2. The *JOIDES Resolution* will be monitoring VHF channels 10 and 16.
3. All vessels are requested to pass at least 0.5NM clear of the vessel.

Charts temporarily affected – NZ 25 (INT 648) – NZ 64 – NZ200025

JOIDES Resolution
NI 238/2009

III

CORRECTIONS TO NEW ZEALAND LIGHT LIST (NZ NTM Edition No.24 dated 27 November 2009)

NEW ZEALAND NAUTICAL ALMANAC 2009/10 LIGHT LIST SECTION

3734	Burgess Island (Pokohinu Island) (M)	35 54.37 175 06.90	FI W 10s	122	19	White stone tower 14	<i>fl 0.1.</i> Reserve light range 10 M
		*					
3736	- Motuhaku Island. Summit (M)	36 09.87 175 17.45	FI W 15s	119	9	White metal column 4	<i>fl 1.</i> Obscured by islands on certain bearings
		*					
3736.2	Tryphena Point (M)	39 19.16 175 28.79	FI(3)W 6s	26	4	White metal column 3	<i>(fl 0.5, ec 1.0) x 2, fl 0.5, ec 2.5</i>
		*					
3800	- - E Entrance. E side	36 50.20 174 45.45	Oc R 6s	3	5	Red □ on red beacon	
		*				*	
3837.1	- - No.9. Pollen Island Marine Reserve – NW limit	36 51.09 174 39.82	Q R	2	1	Red □ on red beacon	
	*	*					
3839	- - No.17. West Park Marina. Entrance	36 48.54 174 38.96	Q R	3	2	Red □ on beacon	<i>fl 0.3</i>
	*	*					
3840	- - No.18. West Park Marina. Entrance	36 48.54 174 38.98	Q G	3	2	Green △ on beacon	<i>fl 0.3</i>
	*	*					
3932	East Cape (M)	37 41.36 178 32.90	FI W 10s	154	19	White round metal tower 14	<i>fl 0.1.</i> Vis 140°-146° (6'), Vis 153°-026° (233'), partially obscured by East Island (Whangaokeno Island).
		*					*
3962	- - S breakwater Head	38 40.68 178 01.12	Iso G 3s	6	4	Green metal tower	<i>fl 0.3.</i> Vis 349°-236° (247') F R on mast 0.62 M E
		*	*				

(NI215, 235/2009)

IV

CORRECTIONS TO PUBLICATIONS (NZ NTM Edition No.24 dated 27 November 2009)

Nil

V

NAVIGATIONAL WARNINGS

Navarea XIV warnings in force 25 November 2009

NAVAREA XIV

(South West Pacific)

- 059/09 SOUTH PACIFIC. VOLUNTARY SHIP REPORTING SYSTEM IN THE NEW ZEALAND SEARCH AND RESCUE AREA SOUTH OF 60° SOUTH
1. The New Zealand Search and Rescue Authorities have established a voluntary ship reporting system for all vessels operating in the NZSAR Region South of 60° South for the purposes of assisting the SAR authority in coordinating SAR operations in that area.
 2. Area covered: 60°S to the southern edge of the Ross Sea bounded by 163°E to 131°W.
 3. All vessels are requested to notify Taupo Maritime Radio on entry and departure into the area and are also encouraged to make daily position reports. Information provided will be used for SAR purposes only.
 4. Taupo Maritime Radio can be contacted on Inmarsat C 582 451 200 067, HF, email maritime@kordia.co.nz or 00 64 4 914 8333
- 066/09 SOUTH PACIFIC OCEAN ILES DE LA SOCIETE CHART SHOM 6688, INT 606
- Cable laying operations in progress by vessel Ile de Re until 08 Jan 10 at Bora Bora, Raiatea, Huanhine, Moorea and Tahiti. Wide berth requested.
- 068/09 SOUTH PACIFIC OCEAN CHART INT 601
1. 16mtr sloop 'Horizon' abandoned and adrift in position 46-55S. 158-52E. at 231900 UTC NOV 09
 2. Cancel this message 261900 UTC NOV 09
-

VI

CORRECTIONS TO ADMIRALTY LIST OF RADIO SIGNALS

(NZ NTM Edition No.24 dated 27 November 2009)

Nil

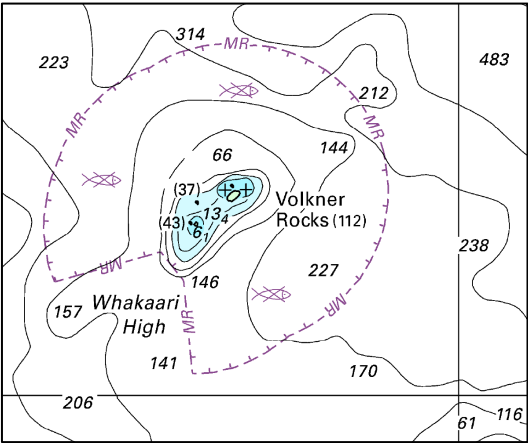


Chart No. NZ 542

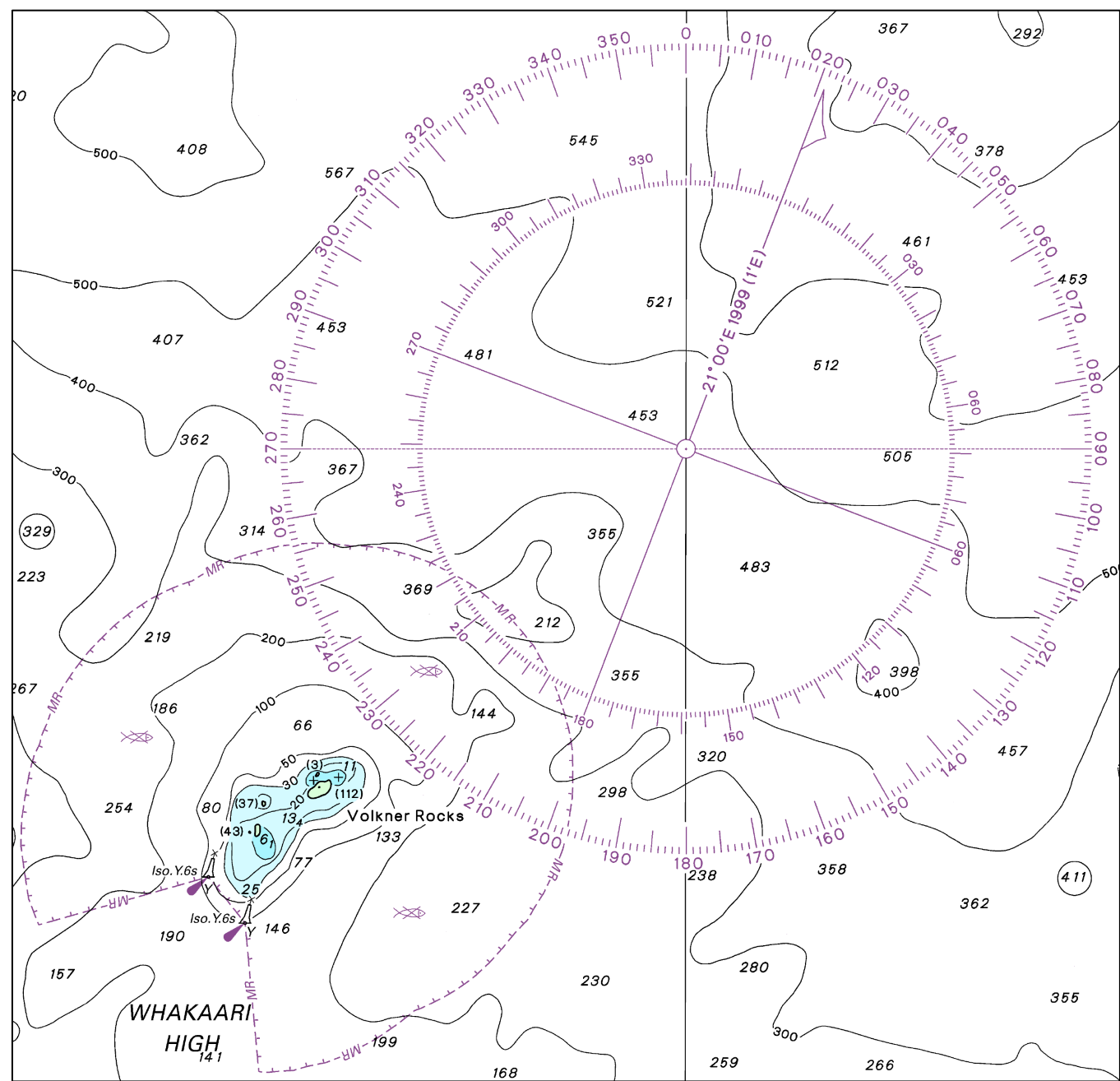


Chart No. NZ 5423



HYDROGRAPHIC NOTE

(For instructions, see next page)

LINZ Hydrographic Services
 National Office
 PO Box 5501
 Lambton Quay
 Wellington 6145
 New Zealand

Tel: 0800 665 463
 Fax : +64 4 460 0161
 Email: info@linz.govt.nz

Date Ref.No.

Name and address of ship or sender

.....

Tel/Fax/Telex/Email of sender

General locality

Subject

Position. Lat. Long.

Position fixing system used

Datum

Charts affected Edition

Dated

Latest Notice to Mariners held

Publications affected (Edition No. and date of latest supplement, page no, ID no. etc)

Details:

A replacement copy of Chart No.
 is required (see Instruction 4).

Signature of observer/reporter

HYDROGRAPHIC NOTE

Forwarding Information for Charts and Hydrographic Publications

Note: An acknowledgement of receipt will be sent and the information then used to the best advantage, which may mean immediate action or inclusion in a revision in due course. When a Notices to Mariners is issued, the sender's ship or name is quoted as authority unless (as sometimes happens) the information is also received in a foreign Notices to Mariners. An explanation of the use of contributions from all parts of the world would be too greater task and a further communication should only be expected when the information is of outstanding value or has unusual features.

INSTRUCTIONS:

1. Mariners are requested to notify LINZ Hydrographic Services, National Office, Land Information New Zealand, PO Box 5501, Lambton Quay, Wellington 6145, New Zealand, when new or suspected dangers to navigation are discovered, changes observed in aids to navigation, or corrections to publications seem to be necessary. The *Admiralty* publication, *The Mariner's Handbook* (NP 100), "Chapter 8", gives general instructions.
2. This form and its instructions have been designed to help both the sender and the recipient. It should be used, or followed, closely, whenever appropriate. Copies of this form may be obtained gratis from LINZ Hydrographic Services at the address above, or in PDF format directly from the LINZ website at www.linz.govt.nz.
3. When a position is defined by sextant angles or bearings (true or magnetic being specified) more than two should be used in order to provide a check. Distances observed by radar should be quoted. However, when there is a series of fixes along a ship's course, only the method of fixing and the objects used need to be indicated. Latitude and longitude should only be used specifically to position the details when they have been fixed by astronomical observations or GPS and a full description of the method, equipment and datum used should be given.
4. A cutting from the largest scale paper chart is the best medium for forwarding details, the alterations and additions being shown thereon in red. When requested, a new copy will be sent in replacement of a chart that has been used to forward information, or when extensive observations have involved defacement of the observer's chart. If it is preferred to show the amendments on a tracing of the largest scale chart (rather than the chart itself) these should be in red as above, but adequate detail from the chart must be traced in black ink to enable the amendments to be fitted correctly.
5. When soundings are obtained, *The Mariners Handbook* (NP 100) should be consulted. The echo sounding trace should be marked with times, depths, etc., and forwarded with the report. It is important to state whether the echo sounder is set to register depths below the surface, or below the keel; in the latter case the vessel's draught should be given. Time and date should be given in order that corrections for the height of the tide may be made where necessary. The make, name, and type of echo sounder set should also be given.
6. Modern echo sounders frequently record greater depths than the set's nominal range, e.g. with a set whose maximum is 500m a trace appearing at 50m may in fact be 550m or even 1,050m. Erroneous deep soundings beyond the sets nominal range can usually be recognised by the following:
 - (a) The trace being weaker than normal for the depth registered
 - (b) The trace appearing to pass through the transmission line
 - (c) The "feathery" nature of the trace.
7. Reports which cannot be confirmed or are lacking in certain details should not be withheld. Shortcomings should be stressed and any firm expectation of being able to check the information on a succeeding voyage should be mentioned.
8. Reports of shoal soundings, uncharted dangers and navigational aids out of order should, at the mariner's discretion, also be made by radio to the nearest coast radio station. The draught of modern tankers is such that any uncharted depth under 30 metres or 15 fathoms may be of sufficient importance to justify a radio message.