

NEW ZEALAND NOTICES TO MARINERS

Notices NZ 45 – 51

© Crown Copyright 2012. All rights Reserved. Permission is not required to make analogue copies of these Notices but such copies are not to be sold.

CONTENTS

- I [Explanatory Notes.](#)
 - II [New Zealand Notices to Mariners.](#)
 - III [Corrections to New Zealand Light List.](#)
 - IV [Corrections to Sailing Directions and New Zealand Publications.](#)
 - V [Navigational Warnings \(NAVAREA XIV\).](#)
 - VI [Corrections to Admiralty List of Radio Signals.](#)
-

New Zealand Notices to Mariners are the authority for correcting New Zealand charts within the New Zealand area of charting responsibility as shown in [Annual Notice No. 1](#).

Mariners are requested to immediately inform New Zealand Hydrographic Authority, Land Information New Zealand, 155 The Terrace, PO Box 5501, Wellington 6145, New Zealand, Phone : 0800 665 463 or +64 (0)4 460-0110 Fax: +64 (0)4 460-0161 or e-mail: customersupport@linz.govt.nz, of the discovery of new or suspected dangers to navigation, or shortcomings in charts and publications. A copy of a Hydrographic Note, a convenient form on which to send such information, is included at the end of Section VI of the Fortnightly Notices to Mariners.

Changes or defects in aids to navigation should be reported to the Rescue Coordination Centre New Zealand (RCCNZ) via the nearest New Zealand Coastal Maritime Radio Station Phone : +64 (0)4 577-8030 Fax : +64 (0)4 577-8038 or +64 (0)4 577-8041 e-mail: rccnz@maritimenz.govt.nz.

Copies of these Notices can be obtained from Land Information New Zealand, Maritime New Zealand, Principal Chart Agents at the major ports of New Zealand and the Internet: www.linz.govt.nz.

EXPLANATORY NOTES

Charts. The notices in Section II give instructions for the correction of charts. Geographical positions refer to the largest scale chart unless otherwise stated. They are normally given in degrees, minutes and decimals of a minute, but may occasionally quote seconds for convenience when plotting from the graduation of some older-style charts. Bearings are true reckoned clockwise from 000° to 359°; those relating to lights are given as seen by an observer from seaward. Symbols referred to are those shown in publication Chart 5011 (*INT 1*) Symbols and Abbreviations used on Admiralty Paper Charts, published by the United Kingdom Hydrographic Office.

Alterations to depth contours, deletion of depths to make way for new detail, etc. are not mentioned unless they have some navigational significance.

Block corrections or notes accompanying notices in Section II are placed after Section VI.

Temporary and Preliminary Notices. These are indicated by (T) or (P) after the notice number. A list of [\(T\) and \(P\) Notices in force](#) is published on the LINZ website and in the fortnightly Editions of Notices to Mariners. Charts are not corrected for them before issue; they should be corrected in pencil on receipt.

Light Lists. The detailed correction to the Light List is given in Section III and may not be published in the same edition as the chart correcting notice. The entire entry for each light is printed, and an asterisk (*) is shown under the column which contains an amendment. In the case of a new light, an asterisk (*) appears under all the columns. New and extensively altered entries are intended to be pasted in. It is recommended that a manuscript entry be made for all shorter corrections.

It is emphasized that the [List of Lights](#) is the authority for lights and that many alterations, especially those of a temporary but operational nature, may only be promulgated as corrections to the List of Lights.

Sailing Directions. Corrections to Sailing Directions are given in Section IV. It is recommended that such corrections be kept together in a file with the latest list of those in force on top. The file can then be consulted when using the Current Edition of the book to see if any notices affecting the area under consideration are extant. Corrections should not be pasted into the Current Edition of the book or Supplement.

New Zealand Publications. Corrections to New Zealand Publications are given in Section IV.

Navigational Warnings (NAVAREA XIV). NAVAREA XIV Navigational Warnings that are in force at the time of publication are given in Section V.

Radio Signals. When radio signals are affected by a notice the Admiralty List of Radio Signals reference number is quoted. The detailed correction to the List of Radio Signals is given in Section VI and may be published in a later edition than the chart correcting notice. It is recommended that such corrections be kept together in a file with the latest list of those in force on top. Corrections should not be pasted into the Current Edition of the book.

Correction of Charts and Publications by the User. New Zealand Notices to Mariners contain important information and should be used to keep the specified charts and books up to date.

THE USE OF CHARTS AND ASSOCIATED PUBLICATIONS

Reliance on Charts and Associated Publications. While every effort is made to ensure the accuracy of the information on New Zealand charts and other publications, it should be appreciated that it may not always be complete and up to date. The mariner must be the final judge of the reliance to be placed on the information given, bearing in mind their particular circumstances, local pilotage guidance and the judicious use of available navigational aids.

Charts. Charts should be used with prudence: there are areas where the source data are old, incomplete or of poor quality. The mariner should use the largest scale appropriate for his particular purpose; apart from being the most detailed, the larger scales are usually corrected first. When extensive new information (such as a new hydrographic survey) is received, some months may elapse before it can be fully incorporated in published charts. On small scale charts of ocean areas where hydrographic information is, in many cases, still sparse, charted shoals may be in error as regards position, least depth and extent. Undiscovered dangers may exist, particularly away from well-established routes.

Further guidance. The Mariner's Handbook (NP 100) gives a fuller explanation of the limitations of charts. All users should study it in their own interest.

II

NUMERICAL INDEX OF CHARTS AFFECTED
(NZ NTM Edition No. 6 dated 16 March 2012)

NZ Chart No.	INT Chart No.	ENC No.	Notice to Mariners
NZ 43			50 (T), 51 (T)
NZ 45			50 (T), 51 (T)
NZ 48			50 (T), 51 (T)
NZ 52			46
NZ 54			49 (T)
NZ 443		NZ300443	50 (T), 51 (T)
NZ 534			49 (T)
NZ 541		NZ300541	49 (T)
NZ 542			49 (T)
NZ 5411		NZ405411	49 (T)
NZ 5413		NZ405413	49 (T)
NZ 6142			47
NZ 6324			48

NEW ZEALAND TEMPORARY AND PRELIMINARY NOTICES IN FORCE

(NZ NTM Edition No. 6 dated 16 March 2012)

NZ Notice	T/P	Charts Affected	Locality and Subject
		NZ Chart, ENC Cell	
129/04	T	NZ 52, NZ53, NZ 522, NZ 5227	Hauraki Gulf: Dredging Operations
194/04	P	NZ 46, NZ 48, NZ 61, NZ 463, NZ 614, NZ 6151, NZ 6152, NZ 6153, NZ 6154	Marlborough Sounds: Use of Automated Navigation Systems
161/05	P	NZ 4633, NZ 4634	Wellington Hr.: Navigation Safety Bylaw
173/05	T	NZ 53, NZ 54, NZ 531, NZ 534, NZ 5318	Whitianga Hr.: Sandbar
176/06	T	NZ 23 (INT 640), NZ 26, NZ 56, NZ 14060 (INT 60), NZ 14600 (INT 600)	N. Island, E. Coast: Scientific Instruments
177/06	T		Indian Ocean: Operation 'Enduring Freedom'
205/06	T	NZ 532, NZ 5324	Tamaki Strait: Motuihe Is.: E. Cardinal Lt Beacon
37/07	T	NZ 53, NZ 532, NZ 533, NZ 5327	Firth of Thames: Moorings, Research Instruments
63/07	T	NZ 4633	Wellington Hr.: Race Marker Buoys
219/07	P	NZ 54, NZ 542	Bay of Plenty, Opotiki: Fish Haven
91/08	P	NZ 4424	W. Coast, Taharoa Hr.: Hr. Limits
131/08	T	NZ 68, NZ 69, NZ 681	Foveaux Strait, Ruapuke Is.: Seabed Obstruction
132/08	T	NZ 14051 (INT 51), NZ 14052 (INT 52), NZ 14060 (INT 60), NZ 14061 (INT 61), NZ 14604 (INT 604), NZ 14605 (INT 605), NZ 14606 (INT 606), NZ 14607 (INT 607), NZ 14629 (INT 629)	North, South Pacific Ocean: ATLAS Buoys
244/08	P	NZ 632, NZ 6321	Banks Peninsula: Mussel Farms
118/09	T	NZ 8275 (T 8275)	Tonga, Nuku'alofa Hr.: Light
139/09	T	NZ 845, NZ 14630 (INT 630), NZ 14631 (INT 631)	Nuie Is: Lights
242/09	P	NZ 42, NZ 4265	Kaipara Hr. Entrance: Depths
28/10	T	NZ 5321, NZ 5322, NZ405321, NZ505322	Auckland Hr. Approaches: Light
63/10	T	NZ 53, NZ 532, NZ 533, NZ 5327, NZ300053, NZ305321	Firth of Thames: Scientific Buoy
132/10	P	NZ 5113	Rangauu Hr.: Lights, Beacons, Buoys
151/10	P	NZ 4314, NZ404314	Manukau Hr.: Lights, Beacons, Buoys
222/10	P	NZ 542	Whakatane: Depths
20/11	P	NZ 5411, NZ5412, NZ405411, NZ505412	Tauranga Hr.: Lights
40/11	T	NZ 4633, NZ 4634, NZ404633, NZ546341, NZ546342	Wellington Hr.: Yacht Club Race Marker Buoys
68/11	P	NZ 53, NZ 532, NZ 5322, NZ 5324, NZ 5325, NZ305322, NZ405324, NZ505322, NZ505325	Rangitoto Channel: Light
78/11	P	NZ 521, NZ 5219	Marsden Point & Whangarei Hr.: Radio Reporting Points & Anchorage Areas.
81/11	T	NZ 46, NZ 463, NZ 615, NZ300463, NZ300615	Cook Strait: Scientific Instruments
82/11	T	NZ 68, NZ 69, NZ 681, NZ 6821, NZ 6825, NZ300681, NZ506811	Foveaux Strait: Scientific Instruments
127/11	T	NZ 63, NZ 632, NZ400632, NZ506321	Okains Bay: Scientific Instruments
128/11	P	NZ 9558	Rarotonga Avatiu: Works in Progress
149/11	P	NZ 6153, NZ 6154, NZ406153, NZ561541	Tory Channel: Light Beacon, Rock
156/11	T	NZ 632, NZ 6321, NZ400632, NZ506321, NZ606321	Lyttelton Hr.: Light
158/11	T	NZ 14060 (INT 60), NZ 14061 (INT 61), NZ 14605 (INT 605), NZ 14638 (INT 638)	Kingdom of Tonga, N. & S. Minerva Reefs: Lights
166/11	T	NZ 6321, NZ506321, NZ606321	Lyttelton Hr.: Beacon
172/11	P	NZ 4265	Kaipara Hr.: Lights, Beacons, Buoys
175/11	P	NZ 6152	Havelock: Lights, Beacons
202/11	P	NZ 6142, NZ606142	Port Nelson: Light, Beacon, Works in Progress
209/11	T	NZ 45, NZ 48	South Taranaki Bight: Drilling Operations
226/11	T	NZ 23(INT 640), NZ 26, NZ 55, NZ14600 (INT 600), NZ200023, NZ300055	Gisborne, Northeastwards: Scientific Instrument
241/11	T	NZ 61, NZ 614, NZ 6144, NZ300614, NZ406144	Tasman Bay and Golden Bay: Spat Catching Areas.
247/11	T	NZ 54, NZ 541, NZ 542, NZ 5413, NZ300541, NZ405413	East Coast, Bay of Plenty: Waverider Buoy
260/11	T	NZ 6612, NZ506612	Otago Hr.; Lower Hr.: Beacon, Light.
267/11	T	NZ 25 (INT 648), NZ 29, NZ 64, NZ 66, NZ 68, NZ200025	Otago Peninsula Southwards: Seismic Survey
26/12	P	NZ 43, NZ 4424	West Coast, Taharoa Offshore Terminal: Works in Progress
33/12	T		South Pacific Ocean: Maritime Safety Broadcasts
39/12	T	NZ 7142, NZ407142, NZ507142	West Coast, Greymouth Hr: Depths
40/12	T	NZ 4314, NZ404314	Manukau Hr. Entrance: Depths

Continued

Continued

NZ Notice	T/P	Charts Affected	Locality and Subject
		NZ Chart, ENC Cell	
43/12	T	NZ 23 (INT 640), NZ 25 (INT 648), NZ 45, NZ 48, NZ 443, NZ200023, NZ200025, NZ300443	West Coast, Cape Egmont Southwestwards: Drilling Operations
44/12	T	NZ 45, NZ 48	West Coast, South Taranaki Bight: Waverider Buoy
49/12	T	NZ 54, NZ 534, NZ 541, NZ 542, NZ 5411, NZ 5413, NZ300541, NZ405411, NZ405413	East Coast, Tauranga, Astrolabe Reef: Exclusion Zone




NZ 45/12 BRITISH ADMIRALTY PUBLICATIONS – New Edition Published.

<i>NP No.</i>	<i>Title</i>	<i>Date</i>	<i>Remarks</i>
NP 282	Admiralty List of Radio Signals. Radio Aids to Navigation, Differential GPS (DGPS), Legal Time, Radio Time Signals and Electronic Position Fixing System	15/03/12	Updated to 10/01/12. First amendments in UKHO Week 11/12. The 2011/12 edition of NP282 is cancelled.

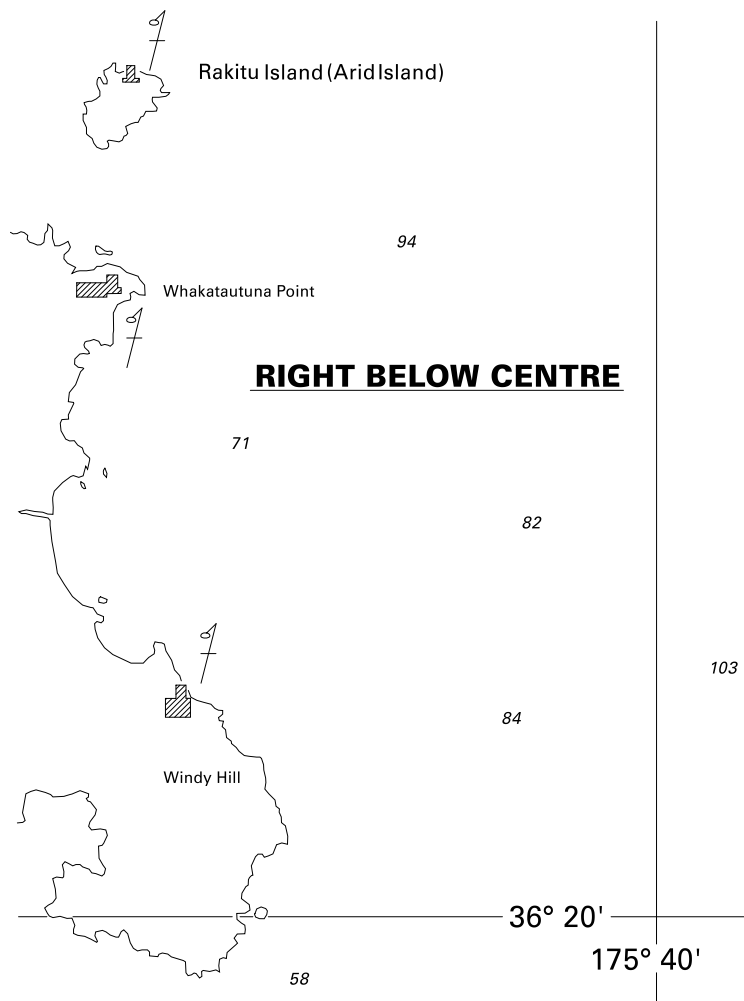
UKHO Weekly Edition 11/12
NI 41/2012

NZ 46/12 NEW ZEALAND – North Island – East Coast – Great Barrier Island – Beacons.

Chart NZ 52 [36/12]

Delete		36° 07'.18S., 175° 30'.07E.
	 and associated spot height value 183	36° 10'.42S., 175° 29'.76E.
	 and associated spot height value 176	36° 16'.71S., 175° 31'.04E.

New Zealand Hydrographic Authority.
 NI 40/2012



<i>Issued as a guide to chart correction.</i>		<i>Use in conjunction with the appropriate NZ Notice to Mariners.</i>	
LAST CORRECTION	NZ NTM No.	CHART No.	
36/12	NZ 46/12	NZ 52	

NZ 47/12 NEW ZEALAND – South Island – North Coast – Port Nelson – Dredged Depths.

Chart NZ 6142 (plan, Port Nelson) [30/12]

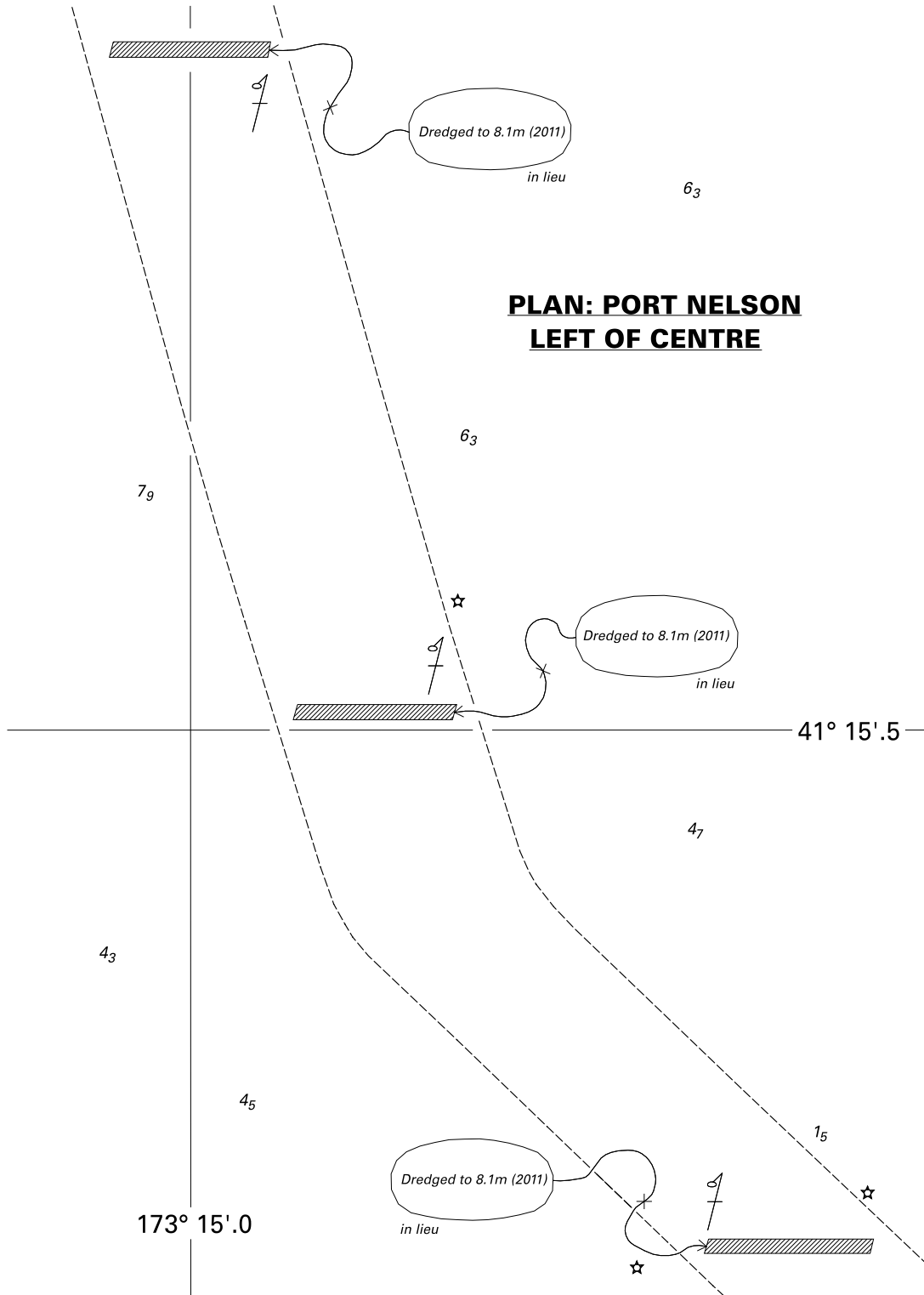
Amend legend to, *Dredged to 8.1m (2011)*

41° 15'.157S., 173° 15'.000E.
41° 15'.490S., 173° 15'.124E.
41° 15'.760S., 173° 15'.400E.

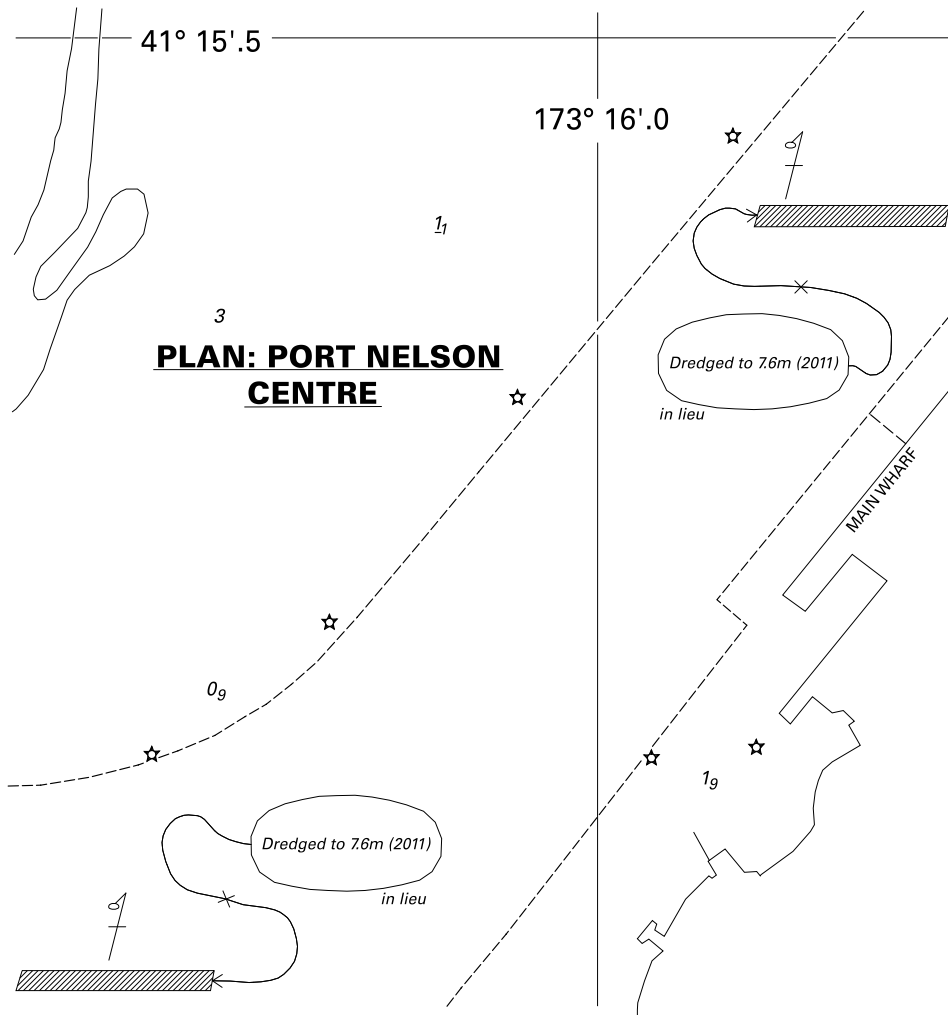
Amend legend to, *Dredged to 7.6m (2011)*

41° 15'.904S., 173° 15'.727E.
41° 15'.577S., 173° 16'.146E.

Port Nelson Ltd.
NI 46/2012



<i>Issued as a guide to chart correction.</i>		<i>Use in conjunction with the appropriate NZ Notice to Mariners.</i>	
LAST CORRECTION	NZ NTM No.	CHART No.	
30/12	NZ 47/12	NZ 6142	



<i>Issued as a guide to chart correction.</i>		<i>Use in conjunction with the appropriate NZ Notice to Mariners.</i>	
LAST CORRECTION	NZ NTM No.	CHART No.	
30/12	NZ 47/12	NZ 6142	

NZ 48/12 NEW ZEALAND – South Island – East Coast – Akaroa Harbour – Harbour Regulations.

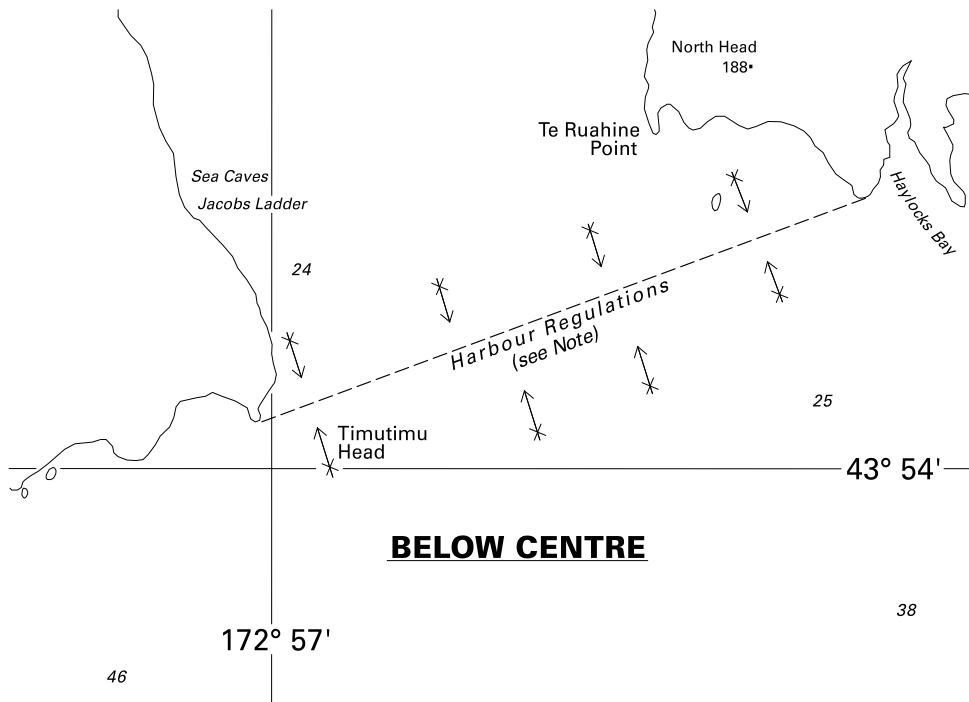
Chart NZ 6324 [NE Apr 09]

Insert -----, from: (a) 43° 53'.42S., 172° 58'.76E.
 to: (b) 43° 53'.90S., 172° 56'.97E.

legend, *Harbour Regulations* (see Note), along: (a)-(b) above

accompanying note, HARBOUR REGULATIONS below title

Environment Canterbury
 NI 47/2012



<i>Issued as a guide to chart correction.</i>		<i>Use in conjunction with the appropriate NZ Notice to Mariners.</i>	
LAST CORRECTION	NZ NTM No.	CHART No.	
NE Apr 09	NZ 48/12	NZ 6324	

NZ 49(T)/12 NEW ZEALAND – North Island – East Coast – Tauranga – Astrolabe Reef – Exclusion Zone.

Former notice – NZ 24(T)/12 is cancelled.

1. Mariners are advised that a temporary Exclusion Zone has been set up around the stranded vessel M.V. *Rena* and Astrolabe Reef in the Bay of Plenty near the approaches to the Port of Tauranga, until further notice.
- * 2. The Bay of Plenty Regional Harbourmaster has closed an area of sea within 2 NM of the M.V. *Rena* in position 37° 32'.42S., 176° 25'.73E.
3. The Harbourmaster has directed that no vessel, craft or person may access the area of sea within the above area unless authorised by:
 - a. The National On-Scene Commander; or
 - b. The salvage master for the M.V. *Rena*; or
 - c. The Bay of Plenty Harbourmaster.
4. The Harbourmaster has directed that all vessels must stay at least 200 metres clear of all containers from the M.V. *Rena*, as well as any salvage vessel working on the response.
5. This direction is made by the Harbourmaster pursuant to clauses 2.17.1 and 3.11 of the Bay of Plenty Regional Navigation Safety Bylaw 2010. Anyone breaching this direction commits an offence and is liable to a fine not exceeding \$20,000: section 239(1) and 242(4) of the Local Government Act 2002.
6. Container corralling areas, containing unlit buoys and floating ropes, have been established in the following locations:
 - Motuotau Island
 - a. 37° 38'.15S., 176° 15'.20E.
 - b. 37° 39'.00S., 176° 14'.30E.
 - c. 37° 37'.80S., 176° 12'.38E.
 - d. 37° 36'.90S., 176° 13'.30E.
 - Motiti Island
 - a. 37° 37'.50S., 176° 24'.50E.
 - b. 37° 37'.50S., 176° 23'.30E.
 - c. 37° 39'.20S., 176° 23'.10E.
 - d. 37° 39'.20S., 176° 24'.30E.

A circle of radius 0.4NM centred on 37° 40'.00S., 176° 20'.00E.

7. Mariners are requested to remain clear of the above areas.

* indicates new or revised entry.

Charts temporarily affected: NZ 54, NZ 534, NZ 541, NZ 542, NZ 5411, NZ 5413, NZ300541, NZ405411, NZ405413

Bay of Plenty Regional Council
NI 35/2012

NZ 50(T)/12 NEW ZEALAND – North Island – West Coast – Cape Egmont – Underwater Operations completed.

Former notice – NZ 25(T)/12 is cancelled.

Cancel this message on receipt.

Charts formerly affected – NZ 43, NZ 45, NZ 48, NZ 443, NZ300443

AWE, Shell Exploration New Zealand Ltd., Shell Todd Oil Services Ltd., Origin Energy Resources (Kupe) Limited.

NI 44/2012

NZ 51(T)/12 NEW ZEALAND – North Island – West Coast – Cape Egmont Southwestwards – Tui Oil Field – Underwater Operations completed

Former notice – NZ 27(T)/12 is cancelled.

Cancel this notice on receipt.

Charts formerly affected – NZ 43, NZ 45, NZ 48, NZ 443, NZ300443

AWE Limited
NI 43/2012

III

CORRECTIONS TO NEW ZEALAND LIGHT LIST (NZ NTM Edition No. 6 dated 16 March 2012)

NEW ZEALAND NAUTICAL ALMANAC 2011/12 LIGHT LIST SECTION

3879.8	- Whangarahi Stream	36 46.01 175 29.02 *	Fl(3)G 20s	8	2	Light on metal pole 8 *
3880.5	- Little Passage	36 46.19 175 27.39 *	Fl(3)G 10s	8	2	Green Δ on green metal pole 8 *

(NI 48/2012)

IV

CORRECTIONS TO SAILING DIRECTIONS AND NEW ZEALAND PUBLICATIONS (NZ NTM Edition No. 6 dated 16 March 2012)

NP9 Antarctic Pilot (2009 Edition)

South Georgia and Approaches – Cumberland Bay – King Edward Cove — Directions; light beacons

169

Paragraph 3.73 1 *Replace by:*

1 **Outer leading light beacons:**

Front beacon (orange triangular topmark, point uppermost on white metal post with orange bands, 8.5m in height) (54°17'06S 36°30'44W).

Rear beacon (orange triangular topmark, point uppermost on white metal post with orange bands, 12.5m in height) (54°17'04S 36°30'59W).

Paragraph 3.73 4 lines 5-8 *Replace by:*

Inner leading light beacons:

Front beacon (orange triangular topmark, point down on white metal post with orange bands, 6m in height) (54°16'86S 36°30'46W).

Paragraph 3.73 5 lines 1-2 *Replace by:*

- 5 Rear beacon (orange triangular topmark, point down on white metal post) (54°16'81S 36°30'57W).
The spire of Grytviken Church (elevation 27m) is in line with these light beacons .

ADLL G1365, G1365-1; G1367, G1367-1
(SDD 2012000 022492)

[10/12]

South Georgia and Approaches – Cumberland Bay to Cape Charlotte – Ocean Harbour — Directions

173

Paragraph 3.94 2 line 5 *For E Read W*

MV *Pharos SG*
(SDD 2012000 022483)

[10/12]

NP13 Australia Pilot Volume 1 (2011 Edition)

**Western Australia - Port Walcott —
Controlling depths**

231

Paragraph 6.80 *1* line 4 *For* 16.0 m *Read* 15.6 m

Chart Aus 55 [09/12]

**South Australia - Warburton Channel —
Directions; depth**

346

Paragraph 10.86 *3* line 5 *For* 8.5 m *Read* 7.3 m

Chart Aus 121 [09/12]

**South Australia - Streaky Bay —
Directions; depth**

346

Paragraph 10.87 *1* line 4 *For* 4.6 m *Read* 3.6 m

Chart Aus 121 [09/12]

NP14 Australia Pilot Volume 2 (2010 Edition)

Victoria – Port Phillip – South Channel — Controlling Depths

104

After Paragraph 4.12 2 line 1 Including existing Section IV
Notice Week 35/11 *Insert*:

South Channel E entrance maintained depth 16.0 m
within deepwater channel and 13.1 m in the adjacent
secondary channel.

AA571850 [11/12]

Victoria – Port Phillip – Approaches to Geelong — Directions; channel

115

Paragraph 4.75 1 lines 1-3 *Replace by*:

On rounding Middle Ground Bank, vessels with a
draught of greater than 11.6 m must use the defined deep
water channel (16 m); vessels with a draught of less than
11.6 m may use the 400m wide secondary channel as
shown on chart AUS 158.

Caution. The alignment (182°), astern, of No 19 Light
Beacon and Rosebud Jetty Light does not serve as a
leading line for either the deep water channel or the
secondary channel.

From a position close E of No.22 Light Buoy (port
hand) (38°19'64S 144°54'20E) the track leads NNW,
passing (with positions from Hovell Pile Light):

Australian Notice 1/44/12
(HH 014/200/02; AA571850) [11/12]

Victoria – Port Phillip – Approaches to Melbourne — Directions; channel

126

Paragraph 4.122 1 lines 1-8 *Replace by*:

1 On rounding Middle Ground Bank, vessels with a
draught of greater than 11.6 m must use the defined deep
water channel (16 m); vessels with a draught of less than
11.6 m may use the 400m wide secondary channel as
shown on chart AUS 158.

Caution. The alignment (182°), astern, of No 19 Light
Beacon and Rosebud Jetty Light does not serve as a
leading line for either the deep water channel or the
secondary channel.

From a position close E of No.22 Light Buoy (port
hand) (38°19'64S 144°54'20E) the track leads N into the
Shipping Fairway as shown on the chart, passing (with
positions from Hovell Pile Light):

Australian Notice 1/44/12
(HH 014/200/02; AA571850) [11/12]

NP15 Australia Pilot Volume 3 (2009 Edition)

**Queensland – Mooloolaba Harbour —
Directions; depth**

146

Paragraph 4.55 2 line 10 *For* 3 m *Read* 2.5 m

AA577312 [09/12]

Queensland – Hervey Bay — Directions; shoal

175

Paragraph 5.90 4 lines 5-10 *Replace by:*

WNW of Ferguson Spit (24°46'·31S 153°05'·58E),
thence:
WNW of Rooney Point (24°48'·91S 153°07'·25E), low
and sandy, backed by sand hills.

Chart Aus 817 [09/12]

Queensland – Cape Tribulation — Directions; wreck

312

Paragraph 9.105 1 line 9 *Delete*

Australian Notice 03/136/12 [09/12]

**Queensland – Torres Strait – Great North East
Channel — Directions; depth**

416

Paragraph 13.31 1 line 2 *For* 19 *Read* 18

Chart Aus 839 [09/12]

NP15 Australia Pilot Volume 3 (2009 Edition)

Australia – Queensland – Kolan River — Directions

184

Paragraph 5.146 2 lines 1-6 *Delete*

Chart Aus 818 [11/12]

**Australia – Queensland – Colosseum Inlet —
Approach; obstruction**

184

Paragraph 5.147 2 line 4 *Add:*

...A dangerous obstruction lies in position 23°57'·55S
151°26'·24E.

Australian Notice 04/181/12 [11/12]

NP51 New Zealand Pilot (2010 Edition)

Cape Brett to Tutukaka Harbour — Directions; depth

199

Paragraph 7.96 4 line 3 *For* 4.3m *Read* 1.5m

New Zealand Notice 04/36/12
(SDD 2012000 033723)

[10/12]

NP60 Pacific Islands Pilot Volume 1 (2007 Edition)

**Federated States of Micronesia - Caroline Islands -
Pingelap and Mokil Atolls — Positions;
reference charts**

418

Paragraph 11.32 1 line 4 *For* (6°40'N 159°47'E) *Read*
(6°41'·00N 159°45'·00E).

Paragraph 11.33 *Delete:*

Charts 761, 978 Plan of Pingelap Atoll

Paragraph 11.36 *Delete:*

Charts 761, 978 Plan of Mokil Atoll

Paragraph 11.36 1 line 1 *For* (6°40'N 159°47'E) *Read*
(6°41'·00N 159°45'·00E).

Admiralty Notice 07/646/12
(HH. 060/200/01)

[09/12]

V

NAVIGATIONAL WARNINGS

Navarea XIV warnings in force 14 March 2012

NAVAREA XIV

(South West Pacific)

24/12 SECURITE
FM NAVAREA XIV COORDINATOR 251850 UTC FEB 12
NAVAREA XIV 024/12
SOUTH PACIFIC
THERE ARE CURRENTLY NO WARNINGS ISSUED FOR NAVAREA XIV.

VI

CORRECTIONS TO ADMIRALTY LIST OF RADIO SIGNALS (NZ NTM Edition No. 6 dated 16 March 2012)

VOLUME 2, NP 282, 2012/13

Published Wk 11/12
First amendments in Wk 11/12
The 2011/12 edition is cancelled

RECORD OF AMENDMENTS

PAGE ii, NEW EDITION, First Amendments.
Insert:

This edition was published in Wk 11/12.
First amendments issued in Wk 11/12.

UKHO 11/12

PAGE 130, CHILE.

Insert:

Islotes Salientes Lt	55°06'·80S 70°14'·40W					0		92257
----------------------	-----------------------	--	--	--	--	---	--	-------

Chilean Notice 11/145/11 (RSDRA2011000235302) 11/12

VOLUME 6, PART 4, NP 286(4), 2011/12

Published Wk 34/11

(Last Amendments: Weekly Edition No. 10 dated 8 March 2012)

**PAGE 84, AUSTRALIA, QUEENSLAND COAST AND TORRES STRAIT
PILOTAGE, Torres Pilots PTY Ltd, PILOT BOARDING POSITIONS,
Table, Cairns (Cairns Fairway) section.**

Delete and replace by:

Cairns (Cairns Fairway)	16°45'·00S 145°50'·00E	79	PV or Helicopter
-------------------------	---------------------------	----	---------------------

Australian Notice 4/187/12. (RSDRA2012000040337). 11/12

HYDROGRAPHIC NOTE

(For instructions, see next page)

New Zealand Hydrographic Authority
Land Information New Zealand
Radio New Zealand House
155 The Terrace
PO Box 5501
Wellington 6145
New Zealand

Tel: 0800 665 463 or +64 (0)4 460-0110
Fax : +64 (0)4 460-0161
Email: customersupport@linz.govt.nz

Date Ref.No.

Name and address of ship or sender
.....
.....

Tel/Fax/Telex/Email of sender

General locality

Subject

Position. Lat. Long.....

Position fixing system used

Datum

Paper Chart/ENC affected Edition.....

Dated

Latest Notice to Mariners held.....

Publications affected (Edition No. and date of latest supplement, page no, ID no. etc)

Details:

A replacement copy of Chart No.
is required (see Instruction 4).

Signature of observer/reporter.....

HYDROGRAPHIC NOTE

Forwarding Information for Charts and Hydrographic Publications

Note: An acknowledgement of receipt will be sent and the information then used to the best advantage, which may mean immediate action or inclusion in a revision in due course. When a Notices to Mariners is issued, the sender's ship or name is quoted as authority unless (as sometimes happens) the information is also received in a foreign Notices to Mariners. An explanation of the use of contributions from all parts of the world would be too greater task and a further communication should only be expected when the information is of outstanding value or has unusual features.

INSTRUCTIONS:

1. Mariners are requested to notify New Zealand Hydrographic Authority, Land Information New Zealand, 155 The Terrace, PO Box 5501, Wellington 6145, New Zealand, when new or suspected dangers to navigation are discovered, changes observed in aids to navigation, or corrections to publications seem to be necessary. The *Admiralty* publication, *The Mariner's Handbook* (NP 100), Chapter 4, gives general instructions.
2. This form and its instructions have been designed to help both the sender and the recipient. It should be used, or followed, closely, whenever appropriate. Copies of this form may be obtained gratis from the New Zealand Hydrographic Authority at the address above, or in PDF format directly from the LINZ website, www.linz.govt.nz/hydro.
3. When a position is defined by sextant angles or bearings (true or magnetic being specified) more than two should be used in order to provide a check. Distances observed by radar should be quoted. However, when there is a series of fixes along a ship's course, only the method of fixing and the objects used need to be indicated. Latitude and longitude should only be used specifically to position the details when they have been fixed by astronomical observations or GPS and a full description of the method, equipment and datum used should be given.
4. Paper Charts: A cutting from the largest scale paper chart is the best medium for forwarding details, the alterations and additions being shown thereon in red. When requested, a new copy will be sent in replacement of a chart that has been used to forward information, or when extensive observations have involved defacement of the observer's chart. If it is preferred to show the amendments on a tracing of the largest scale chart (rather than the chart itself) these should be in red as above, but adequate detail from the chart must be traced in black ink to enable the amendments to be fitted correctly.
Electronic Navigational Charts (ENCs): A screen dump of the largest scale usage band ENC with the alterations and additions being shown thereon in red.
5. When soundings are obtained, *The Mariners Handbook* (NP 100) should be consulted. The echo sounding trace should be marked with times, depths, etc., and forwarded with the report. It is important to state whether the echo sounder is set to register depths below the surface, or below the keel; in the latter case the vessel's draught should be given. Time and date should be given in order that corrections for the height of the tide may be made where necessary. The make, name, and type of echo sounder set should also be given.
6. Modern echo sounders frequently record greater depths than the set's nominal range, e.g. with a set whose maximum is 500m a trace appearing at 50m may in fact be 550m or even 1,050m. Erroneous deep soundings beyond the sets nominal range can usually be recognised by the following:
 - (a) The trace being weaker than normal for the depth registered
 - (b) The trace appearing to pass through the transmission line
 - (c) The "feathery" nature of the trace.
7. Reports which cannot be confirmed or are lacking in certain details should not be withheld. Shortcomings should be stressed and any firm expectation of being able to check the information on a succeeding voyage should be mentioned.
8. Reports of shoal soundings, uncharted dangers and navigational aids out of order should, at the mariner's discretion, also be made by radio to the nearest coast radio station. The draught of modern tankers is such that any uncharted depth under 30 metres or 15 fathoms may be of sufficient importance to justify a radio message.

To accompany New Zealand Notice to Mariners No. 48/12

HARBOUR REGULATIONS

The masters of all vessels over 40m LOA are required to contact the Regional Harbourmaster (mobile telephone) for entry instructions and Harbourmaster Directions. Refer to New Zealand Nautical Almanac, Harbourmasters, for contact details.

Chart No. NZ 6324