

# NEW ZEALAND NOTICES TO MARINERS

## Notices NZ 52 – 62

© Crown Copyright 2012. All rights Reserved. Permission is not required to make analogue copies of these Notices but such copies are not to be sold.

---

### CONTENTS

- I [Explanatory Notes.](#)
  - II [New Zealand Notices to Mariners.](#)
  - III [Corrections to New Zealand Light List.](#)
  - IV [Corrections to Sailing Directions and New Zealand Publications.](#)
  - V [Navigational Warnings \(NAVAREA XIV\).](#)
  - VI [Corrections to Admiralty List of Radio Signals.](#)
- 

New Zealand Notices to Mariners are the authority for correcting New Zealand charts within the New Zealand area of charting responsibility as shown in [Annual Notice No. 1](#).

Mariners are requested to immediately inform New Zealand Hydrographic Authority, Land Information New Zealand, 155 The Terrace, PO Box 5501, Wellington 6145, New Zealand, Phone : 0800 665 463 or +64 (0)4 460-0110 Fax: +64 (0)4 460-0161 or e-mail: [customersupport@linz.govt.nz](mailto:customersupport@linz.govt.nz), of the discovery of new or suspected dangers to navigation, or shortcomings in charts and publications. A copy of a Hydrographic Note, a convenient form on which to send such information, is included at the end of Section VI of the Fortnightly Notices to Mariners.

Changes or defects in aids to navigation should be reported to the Rescue Coordination Centre New Zealand (RCCNZ) via the nearest New Zealand Coastal Maritime Radio Station Phone : +64 (0)4 577-8030 Fax : +64 (0)4 577-8038 or +64 (0)4 577-8041 e-mail: [rccnz@maritimenz.govt.nz](mailto:rccnz@maritimenz.govt.nz).

Copies of these Notices can be obtained from Land Information New Zealand, Maritime New Zealand, Principal Chart Agents at the major ports of New Zealand and the Internet: [www.linz.govt.nz](http://www.linz.govt.nz).

## EXPLANATORY NOTES

**Charts.** The notices in Section II give instructions for the correction of charts. Geographical positions refer to the largest scale chart unless otherwise stated. They are normally given in degrees, minutes and decimals of a minute, but may occasionally quote seconds for convenience when plotting from the graduation of some older-style charts. Bearings are true reckoned clockwise from 000° to 359°; those relating to lights are given as seen by an observer from seaward. Symbols referred to are those shown in publication Chart 5011 (*INT 1*) Symbols and Abbreviations used on Admiralty Paper Charts, published by the United Kingdom Hydrographic Office.

Alterations to depth contours, deletion of depths to make way for new detail, etc. are not mentioned unless they have some navigational significance.

Block corrections or notes accompanying notices in Section II are placed after Section VI.

**Temporary and Preliminary Notices.** These are indicated by (T) or (P) after the notice number. A list of [\(T\) and \(P\) Notices in force](#) is published on the LINZ website and in the fortnightly Editions of Notices to Mariners. Charts are not corrected for them before issue; they should be corrected in pencil on receipt.

**Light Lists.** The detailed correction to the Light List is given in Section III and may not be published in the same edition as the chart correcting notice. The entire entry for each light is printed, and an asterisk (\*) is shown under the column which contains an amendment. In the case of a new light, an asterisk (\*) appears under all the columns. New and extensively altered entries are intended to be pasted in. It is recommended that a manuscript entry be made for all shorter corrections.

It is emphasized that the [List of Lights](#) is the authority for lights and that many alterations, especially those of a temporary but operational nature, may only be promulgated as corrections to the List of Lights.

**Sailing Directions.** Corrections to Sailing Directions are given in Section IV. It is recommended that such corrections be kept together in a file with the latest list of those in force on top. The file can then be consulted when using the Current Edition of the book to see if any notices affecting the area under consideration are extant. Corrections should not be pasted into the Current Edition of the book or Supplement.

**New Zealand Publications.** Corrections to New Zealand Publications are given in Section IV.

**Navigational Warnings (NAVAREA XIV).** NAVAREA XIV Navigational Warnings that are in force at the time of publication are given in Section V.

**Radio Signals.** When radio signals are affected by a notice the Admiralty List of Radio Signals reference number is quoted. The detailed correction to the List of Radio Signals is given in Section VI and may be published in a later edition than the chart correcting notice. It is recommended that such corrections be kept together in a file with the latest list of those in force on top. Corrections should not be pasted into the Current Edition of the book.

**Correction of Charts and Publications by the User.** New Zealand Notices to Mariners contain important information and should be used to keep the specified charts and books up to date.

## THE USE OF CHARTS AND ASSOCIATED PUBLICATIONS

**Reliance on Charts and Associated Publications.** While every effort is made to ensure the accuracy of the information on New Zealand charts and other publications, it should be appreciated that it may not always be complete and up to date. The mariner must be the final judge of the reliance to be placed on the information given, bearing in mind their particular circumstances, local pilotage guidance and the judicious use of available navigational aids.

**Charts.** Charts should be used with prudence: there are areas where the source data are old, incomplete or of poor quality. The mariner should use the largest scale appropriate for his particular purpose; apart from being the most detailed, the larger scales are usually corrected first. When extensive new information (such as a new hydrographic survey) is received, some months may elapse before it can be fully incorporated in published charts. On small scale charts of ocean areas where hydrographic information is, in many cases, still sparse, charted shoals may be in error as regards position, least depth and extent. Undiscovered dangers may exist, particularly away from well-established routes.

**Further guidance.** The Mariner's Handbook (NP 100) gives a fuller explanation of the limitations of charts. All users should study it in their own interest.

II

**NUMERICAL INDEX OF CHARTS AFFECTED**  
*(NZ NTM Edition No.7 dated 30 March 2012)*

NZ Chart No.	INT Chart No.	ENC No.	Notice to Mariners
NZ 23	INT 640	NZ200023	58(T), 62(T)
NZ 25	INT 648	NZ200025	58(T), 61(T)
NZ 26			62(T)
NZ 29			61(T)
NZ 45			58(T)
NZ 48			58(T)
NZ 56			62(T)
NZ 61			53, 58(T)
		NZ300061	58(T)
NZ 64			61(T)
NZ 66			61(T)
NZ 68			61(T)
NZ 532		NZ305322	57(T)
NZ 614		NZ300614	59(T)
NZ 5322		NZ505322	56(P),
		NZ653221	56(P)
NZ 5323			56(P)
NZ 5324		NZ405324	57(T)
NZ 6144		NZ406144	59(T)
NZ 6321			54
NZ 6612		NZ506612	60(T)
NZ 14060	INT 60		62(T)
NZ 14600	INT 600		62(T)

**NEW ZEALAND TEMPORARY AND PRELIMINARY NOTICES IN FORCE**

(NZ NTM Edition No.7 dated 30 March 2012)

NZ Notice	T/P	Charts Affected	Locality and Subject
		NZ Chart, ENC Cell	
129/04	T	<b>NZ 52, NZ53, NZ 522, NZ 5227</b>	Hauraki Gulf: Dredging Operations
194/04	P	<b>NZ 46, NZ 48, NZ 61, NZ 463, NZ 614, NZ 6151, NZ 6152, NZ 6153, NZ 6154</b>	Marlborough Sounds: Use of Automated Navigation Systems
161/05	P	<b>NZ 4633, NZ 4634</b>	Wellington Hr.: Navigation Safety Bylaw
173/05	T	<b>NZ 53, NZ 54, NZ 531, NZ 534, NZ 5318</b>	Whitianga Hr.: Sandbar
177/06	T		Indian Ocean: Operation 'Enduring Freedom'
37/07	T	<b>NZ 53, NZ 532, NZ 533, NZ 5327</b>	Firth of Thames: Moorings, Research Instruments
63/07	T	<b>NZ 4633</b>	Wellington Hr.: Race Marker Buoys
219/07	P	<b>NZ 54, NZ 542</b>	Bay of Plenty, Opotiki: Fish Haven
91/08	P	<b>NZ 4424</b>	W. Coast, Taharoa Hr.: Hr. Limits
131/08	T	<b>NZ 68, NZ 69, NZ 681</b>	Foveaux Strait, Ruapuke Is.: Seabed Obstruction
132/08	T	<b>NZ 14051 (INT 51), NZ 14052 (INT 52), NZ 14060 (INT 60), NZ 14061 (INT 61), NZ 14604 (INT 604), NZ 14605 (INT 605), NZ 14606 (INT 606), NZ 14607 (INT 607), NZ 14629 (INT 629)</b>	North, South Pacific Ocean: ATLAS Buoys
244/08	P	<b>NZ 632, NZ 6321</b>	Banks Peninsula: Mussel Farms
118/09	T	<b>NZ 8275 (T 8275)</b>	Tonga, Nuku'alofa Hr.: Light
139/09	T	<b>NZ 845, NZ 14630 (INT 630), NZ 14631 (INT 631)</b>	Nuie Is: Lights
242/09	P	<b>NZ 42, NZ 4265</b>	Kaipara Hr. Entrance: Depths
28/10	T	<b>NZ 5321, NZ 5322, NZ405321, NZ505322</b>	Auckland Hr. Approaches: Light
63/10	T	<b>NZ 53, NZ 532, NZ 533, NZ 5327, NZ300053, NZ305321</b>	Firth of Thames: Scientific Buoy
132/10	P	<b>NZ 5113</b>	Rangaunu Hr.: Lights, Beacons, Buoys
151/10	P	<b>NZ 4314, NZ404314</b>	Manukau Hr.: Lights, Beacons, Buoys
222/10	P	<b>NZ 542</b>	Whakatane: Depths
20/11	P	<b>NZ 5411, NZ5412, NZ405411, NZ505412</b>	Tauranga Hr.: Lights
40/11	T	<b>NZ 4633, NZ 4634, NZ404633, NZ546341, NZ546342</b>	Wellington Hr.: Yacht Club Race Marker Buoys
68/11	P	<b>NZ 53, NZ 532, NZ 5322, NZ 5324, NZ 5325, NZ305322, NZ405324, NZ505322, NZ505325</b>	Rangitoto Channel: Light
78/11	P	<b>NZ 521, NZ 5219</b>	Marsden Point & Whangarei Hr.: Radio Reporting Points & Anchorage Areas.
81/11	T	<b>NZ 46, NZ 463, NZ 615, NZ300463, NZ300615</b>	Cook Strait: Scientific Instruments
82/11	T	<b>NZ 68, NZ 69, NZ 681, NZ 6821, NZ 6825, NZ300681, NZ506811</b>	Foveaux Strait: Scientific Instruments
127/11	T	<b>NZ 63, NZ 632, NZ400632, NZ506321</b>	Okains Bay: Scientific Instruments
128/11	P	<b>NZ 9558</b>	Rarotonga Avatiu: Works in Progress
149/11	P	<b>NZ 6153, NZ 6154, NZ406153, NZ561541</b>	Tory Channel: Light Beacon, Rock
156/11	T	<b>NZ 632, NZ 6321, NZ400632, NZ506321, NZ606321</b>	Lyttelton Hr.: Light
158/11	T	<b>NZ 14060 (INT 60), NZ 14061 (INT 61), NZ 14605 (INT 605), NZ 14638 (INT 638)</b>	Kingdom of Tonga, N. & S. Minerva Reefs: Lights
166/11	T	<b>NZ 6321, NZ506321, NZ606321</b>	Lyttelton Hr.: Beacon
172/11	P	<b>NZ 4265</b>	Kaipara Hr.: Lights, Beacons, Buoys
175/11	P	<b>NZ 6152</b>	Havelock: Lights, Beacons
202/11	P	<b>NZ 6142, NZ606142</b>	Port Nelson: Light, Beacon, Works in Progress
209/11	T	<b>NZ 45, NZ 48</b>	South Taranaki Bight: Drilling Operations
226/11	T	<b>NZ 23(INT 640), NZ 26, NZ 55, NZ14600 (INT 600), NZ200023, NZ300055</b>	Gisborne, Northeastwards: Scientific Instrument
241/11	T	<b>NZ 61, NZ 614, NZ 6144, NZ300614, NZ406144</b>	Tasman Bay and Golden Bay: Spat Catching Areas.
247/11	T	<b>NZ 54, NZ 541, NZ 542, NZ 5413, NZ300541, NZ405413</b>	East Coast, Bay of Plenty: Waverider Buoy
26/12	P	<b>NZ 43, NZ 4424</b>	West Coast, Taharoa Offshore Terminal: Works in Progress
33/12	T		South Pacific Ocean: Maritime Safety Broadcasts
39/12	T	<b>NZ 7142, NZ407142, NZ507142</b>	West Coast, Greymouth Hr.: Depths
40/12	T	<b>NZ 4314, NZ404314</b>	Manukau Hr. Entrance: Depths
43/12	T	<b>NZ 23 (INT 640), NZ 25 (INT 648), NZ 45, NZ 48, NZ 443, NZ200023, NZ200025, NZ300443</b>	West Coast, Cape Egmont Southwestwards: Drilling Operations
44/12	T	<b>NZ 45, NZ 48</b>	West Coast, South Taranaki Bight: Waverider Buoy
49/12	T	<b>NZ 54, NZ 534, NZ 541, NZ 542, NZ 5411, NZ 5413, NZ300541, NZ405411, NZ405413</b>	East Coast, Tauranga, Astrolabe Reef: Exclusion Zone

II

NZ Notice	T/P	Charts Affected	Locality and Subject
		NZ Chart, ENC Cell	
56/12	P	<b>NZ 5322, NZ 5323, NZ505322, NZ653221</b>	East Coast, Auckland Hr., Fergusson Wharf: Dolphin
57/12	T	<b>NZ 532, NZ 5324, NZ305322, NZ405324</b>	East Coast, Tamaki Strait, Motuihe Island: East Cardinal Light Beacon
58/12	T	<b>NZ 23 (INT 640), NZ 25 (INT 648), NZ 45, NZ 48, NZ 61, NZ200023, NZ200025, NZ300061</b>	West Coast, South Taranaki Bight: Seismic Survey
59/12	T	<b>NZ 614, NZ 6144, NZ300614, NZ406144</b>	North Coast, Tasman Bay: Scientific Instruments

**NZ 52/12 ENC/ECDIS Data Presentation and Performance Check in Ships**

The International Maritime Organization (IMO) has recently indicated its concerns about operating anomalies identified in some ECDIS that fail to display important new chart features.

The International Hydrographic Organization (IHO) has produced an ENC Data Presentation and Performance Check dataset that allows mariners to check their ECDIS. The check dataset is available through ENC service providers and from the IHO website ([www.iho.int](http://www.iho.int)) which includes instructions.

Mariners are strongly recommended to use the dataset and report the results of their checks to help the IHO identify how the different brands of ECDIS display and handle chart information. Mariners are asked to also inform the IMO, national Hydrographic Offices, ECDIS manufacturers and others, so that they can take any corrective action that may be necessary.

In order to present the most comprehensive report possible to the IMO and to further assist in resolving the issues so far identified, the IHO is keen that as many ships as possible forward their results. Reports on the results can be sent via a form provided with the data or the results can be submitted on-line through a web-form.

All relevant documentation can be downloaded free from the IHO website at: [www.iho.int](http://www.iho.int)

New Zealand Hydrographic Authority  
NI 50/2012

**NZ 53/12 NEW ZEALAND – South Island – North Coast – D’Urville Island – Harbour Limit.**

**Chart NZ 61 [ 25/11 ]**

Insert harbour limits, - - - - - , joining:

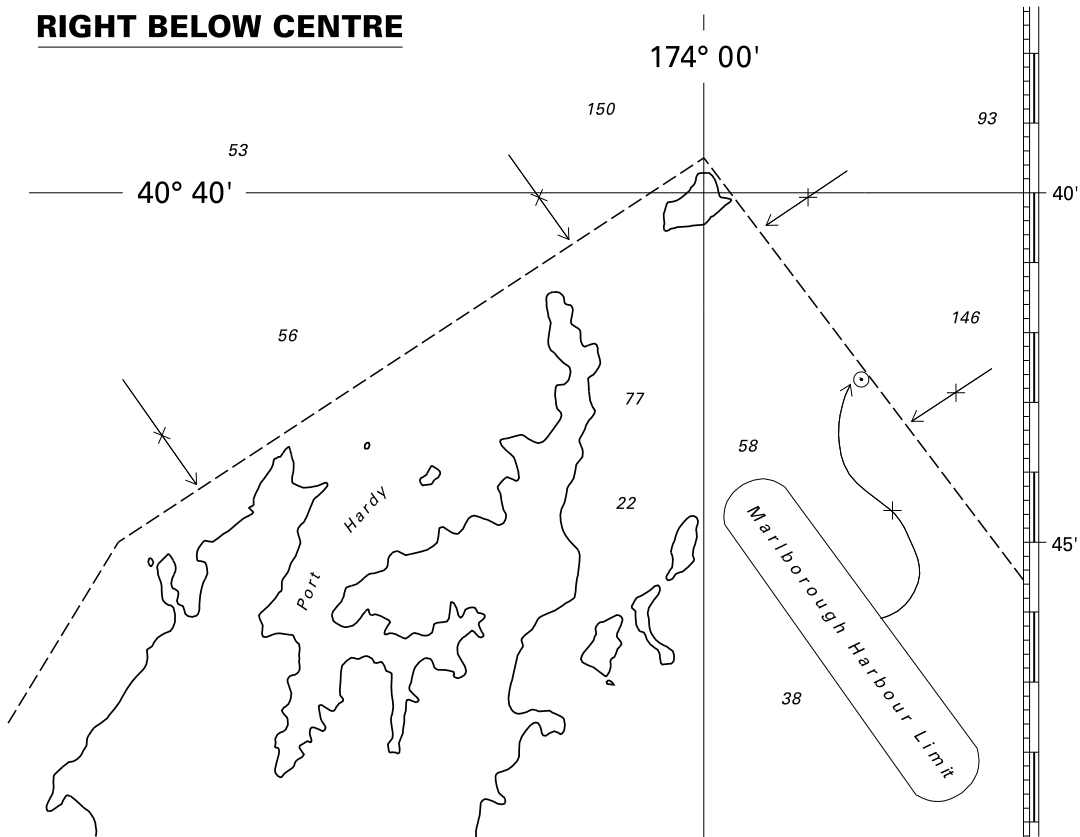
- (a) 41° 02'.88S., 173° 35'.96E.
- (b) 40° 50'.00S., 173° 45'.00E.  
40° 45'.00S., 173° 49'.00E.
- (c) 40° 39'.50S., 174° 00'.00E.
- (d) 40° 45'.54S., 174° 06'.00E. (chart edge)

legend, *Marlborough Harbour Limit*, along:

- (a) – (b) above
- (c) – (d) above

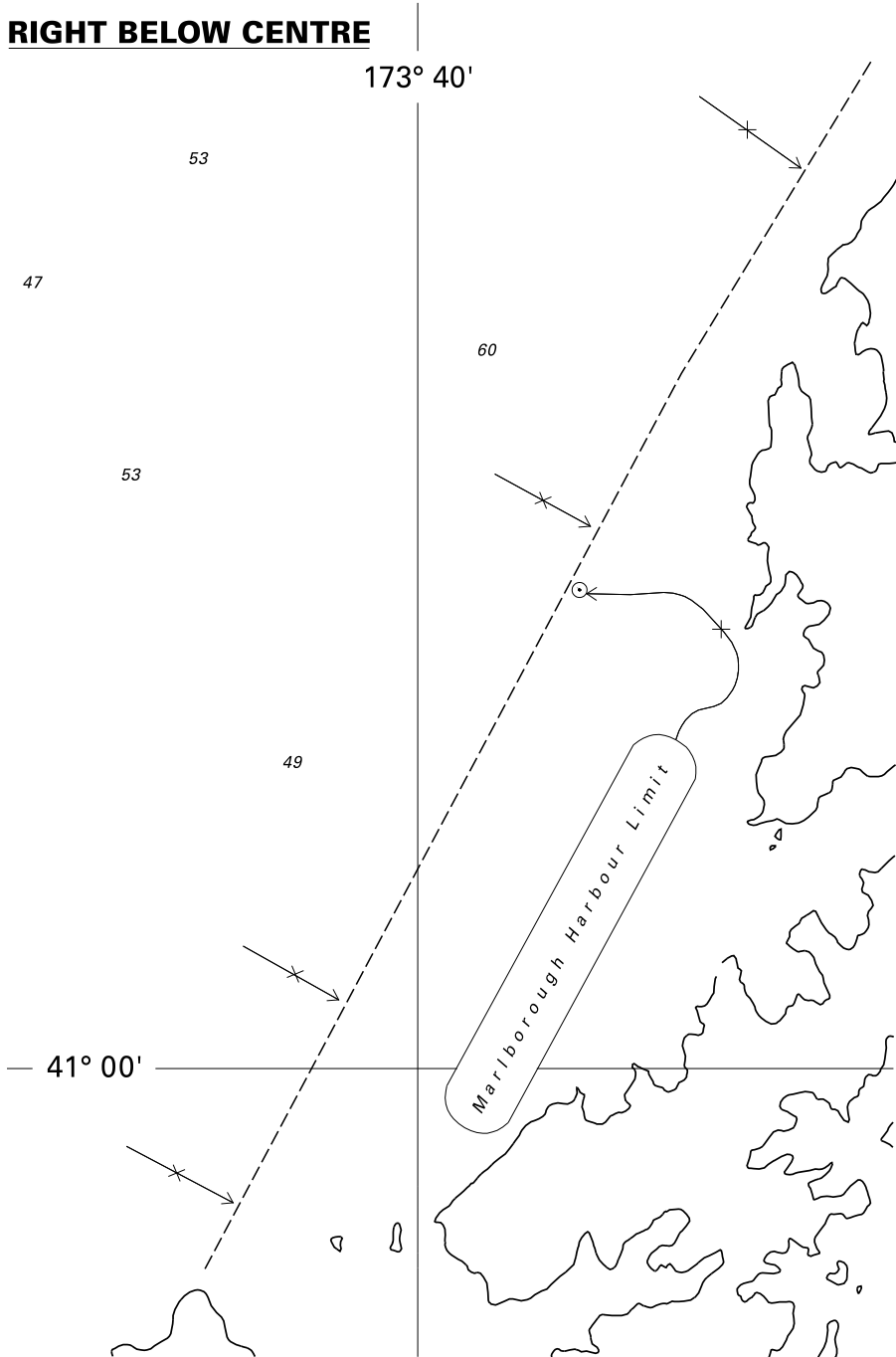
New Zealand Hydrographic Authority  
 NI 52/2012

**RIGHT BELOW CENTRE**



<i>Issued as a guide to chart correction.</i>		<i>Use in conjunction with the appropriate NZ Notice to Mariners.</i>	
<b>LAST CORRECTION</b>	<b>NZ NTM No.</b>	<b>CHART No.</b>	
<b>NZ 25/11</b>	<b>NZ 53/12</b>	<b>NZ 61</b>	

**RIGHT BELOW CENTRE**






<i>Issued as a guide to chart correction.</i>		<i>Use in conjunction with the appropriate NZ Notice to Mariners.</i>	
<b>LAST CORRECTION</b>	<b>NZ NTM No.</b>	<b>CHART No.</b>	
<b>NZ 25/11</b>	<b>NZ 53/12</b>	<b>NZ 61</b>	

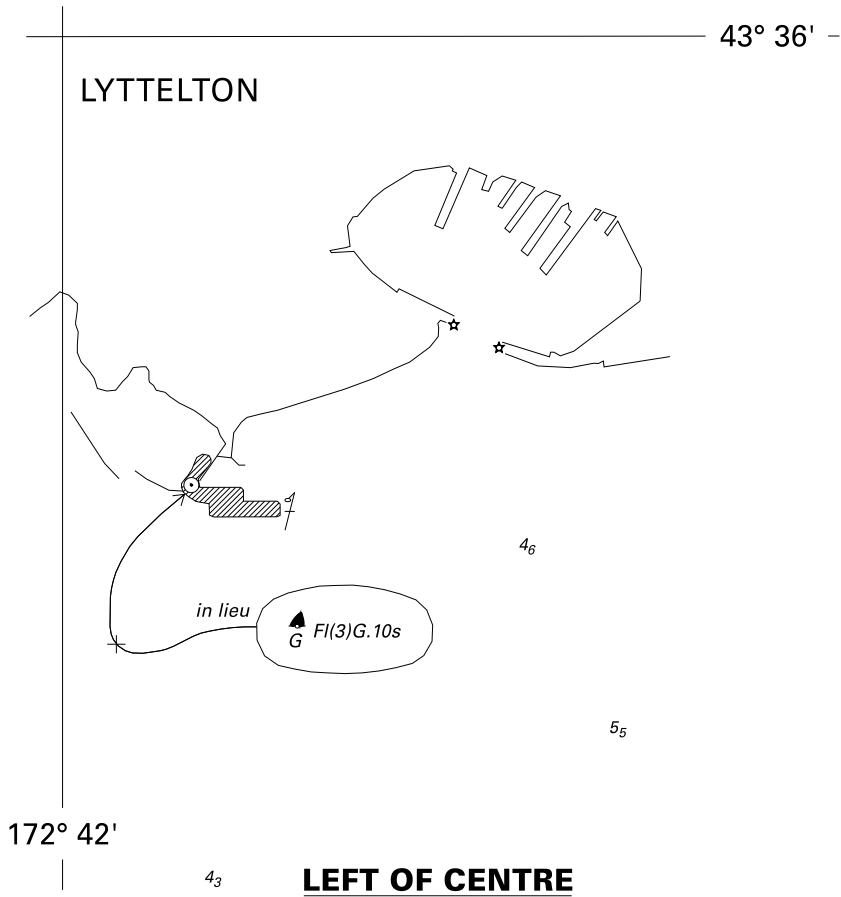


**NZ 54/12 NEW ZEALAND – South Island – East Coast – Lyttelton Harbour – Magazine Bay – Light Buoy.**

**Chart NZ 6321 [ 33/06 ]**

Replace  Fl(3)G.10s2m2M with  Fl(3)G.10s 43° 36'.80S., 172° 42'.31E.  


Environment Canterbury  
 NZ Light List K4302  
 NI 36/2012



<i>Issued as a guide to chart</i>		
<i>correction. Use in conjunction with the appropriate NZ Notice to Mariners.</i>		
<b>LAST CORRECTION</b>	<b>NZ NTM No.</b>	<b>CHART No.</b>
<b>NZ 33/06</b>	<b>NZ 54/12</b>	<b>NZ 6321</b>

**NZ 55/12 NEW ZEALAND PUBLICATIONS – Cumulative List of New Zealand Notices to Mariners.**

The Cumulative List of New Zealand Notices to Mariners, corrected up to Edition 7/12 dated 30 March 2012 is attached as an accompanying supplement to this Edition.

Hydrographic Authority New Zealand  
NI 60/2012

**NZ 56(P)/12 NEW ZEALAND – North Island – East Coast – Auckland Harbour – Fergusson Wharf - Dolphin.**

1. A lit mooring dolphin, 3F.ROrR.5m2M (vert), has been constructed at the northern end of the Fergusson Wharf, in position 36° 50'.391S., 174° 46'.982E.
2. Charting action will take place in due course.

**Charts affected: NZ 5322, NZ 5323, NZ505322, NZ653221**

Ports of Auckland Ltd.  
NZ Light List K3774  
NI 57/2012

**NZ 57(T)/12 NEW ZEALAND – North Island – East Coast – Tamaki Strait – Motuihe Island – East  
Cardinal Light Beacon.**

*Former notice* – NZ 205(T)/06 is cancelled.

1. Motuihe Island East Cardinal Light beacon, Q(3)10s2m1M, in position 36° 48'.53S., 174° 57'.66E has been destroyed and replaced with a temporary buoy, Q(3)6s, until further notice.
2. Mariners are advised to exercise caution when navigating in the area.

**Charts temporarily affected – NZ 532, NZ 5324, NZ305322, NZ405324**

Ports of Auckland Ltd.  
NZ Light List K3845.2  
NI 51/2012

**NZ 58(T)/12 NEW ZEALAND – North Island – West Coast – South Taranaki Bight – Seismic Survey.**

1. The MV *Polarcus Alima* (call sign C6XK4) is undertaking seismic survey operations in the area bounded by the following coordinates, until April 2012:

39° 45'.5S., 172° 57'.8E.

39° 45'.5S., 173° 36'.8E.

40° 16'.5S., 173° 36'.8E.

40° 16'.5S., 172° 57'.8E.

2. The MV *Polarcus Alima* will be deploying 10 streamers 4NM long, marked by a lit tail buoy and is restricted in its ability to manoeuvre. All vessels are requested to pass at least 6NM clear of the vessel and streamers
3. The MV *Polarcus Alima* will be supported by the MV *Jaya Amazon* (call sign 9V8851) and the MV *Ocean Pioneer* (call sign ZM2582) and can be contacted on VHF Channels 12 and 72.
4. Mariners are requested to exercise caution when navigating in the area.

**Charts temporarily affected: NZ 23 (INT 640), NZ 25 (INT 648), NZ 45, NZ 48, NZ 61, NZ200023, NZ200025, NZ300061**

OMV New Zealand Ltd.

NI 56/2012

**NZ 59(T)/12 NEW ZEALAND – South Island – North Coast – Tasman Bay – Scientific Instruments.**

1. Two current meter moorings, marked with yellow buoys, Q(5)Y.20s, have been deployed in the following positions until May 2012.

41° 04'.28S., 173° 06'.06E.

41° 03'.25S., 173° 05'.32E.

2. Mariners are requested to exercise caution when navigating in the area.

**Charts temporarily affected: NZ 614, NZ 6144, NZ300614, NZ406144**

The Cawthron Institute  
NI 58/2012

**NZ 60(T)/12 NEW ZEALAND – South Island – East Coast – Otago Harbour – Lower Harbour – Beacon,  
Light Operational**

*Former notice* – NZ 260(T)/11 is cancelled.

Cancel this notice on receipt.

**Charts formerly affected: NZ 6612, NZ506612**

Port Otago Limited  
NZ Light List K4367.3  
NI 49/2012

**NZ 61(T)/12 NEW ZEALAND – South Island – East Coast – Otago Peninsula Southwards – Seismic  
Survey Completed.**

*Former notice* - NZ 267(T)/11 is cancelled.

Cancel this notice on receipt.

**Charts formerly affected: NZ 25 (INT 648), NZ 29, NZ 64, NZ 66, NZ 68, NZ200025**

OMV New Zealand Ltd.  
NI 55/2012



**NZ 62(T)/12 NEW ZEALAND – North Island – West Coast – Cape Kidnappers Eastwards – Scientific Instruments Recovered.**

*Former notice* – NZ 176(T)/06 is cancelled.

Cancel this notice on receipt.

**Charts formerly affected: NZ 23 (INT 640), NZ 26, NZ 56, NZ 14060 (INT 60), NZ 14600 (INT 600)**

NIWA

NI 59/2012

### III

#### CORRECTIONS TO NEW ZEALAND LIGHT LIST (NZ NTM Edition No.7 dated 30 March 2012)

#### NEW ZEALAND NAUTICAL ALMANAC 2011/12 LIGHT LIST SECTION

3774	Commercial Harbour, Fergusson Wharf, Northern Dolphin	36 50.39 174 46.98	3 F ROrR (vert)	5	2	Metal post	LED Vis 197°-343° (146°)
*	*	*	*	*	*	*	*
3845.2	- E Cardinal	36 48.53 174 57.66	Q(3)W 10s	2	1	⚠ on wood pile, black & yellow bands	<b>Destroyed; buoy, Q(3)6s in situ (T) 2012</b>
		*					*
4302	Delete from list						
4367.3	No. 3	45 47.36 170 43.09	Fl(2)G 4s	3	3	Green △ on green beacon	Ra refl *

---

(NI 36, 49, 51, 53, 57/2012)

### IV

#### CORRECTIONS TO SAILING DIRECTIONS AND NEW ZEALAND PUBLICATIONS (NZ NTM Edition No.7 dated 30 March 2012)

*Nil*

---

**V**

**NAVIGATIONAL WARNINGS**

*Navarea XIV warnings in force 28 March 2012*

**NAVAREA XIV**

*(South West Pacific)*

- 28/12 FM NAVAREA XIV COORDINATOR 141850 UTC MAR 12  
NAVAREA XIV 28/12  
DISPLAY ANOMALIES IN SOME ECDIS.  
MARINERS ARE ADVISED THAT THE INTERNATIONAL HYDROGRAPHIC ORGANIZATION (IHO) CHECK DATA SET SHOWS THAT SOME ECDIS SYSTEMS FAIL TO DISPLAY SOME SIGNIFICANT UNDERWATER FEATURES IN THE STANDARD DISPLAY MODE. THE USE OF THIS CHECK DATA SET, ISSUED THROUGH ENC SERVICE PROVIDERS AND AVAILABLE FROM THE IHO WEBSITE [WWW.IHO.INT](http://WWW.IHO.INT), TO CHECK THE OPERATION OF ECDIS IS STRONGLY RECOMMENDED. JRC HAS CONFIRMED THAT CERTAIN VERSIONS OF JRC ECDIS FAIL TO DISPLAY SOME TYPES OF WRECK AND OBSTRUCTIONS, INCLUDING STRANDED WRECKS, IN ANY DISPLAY MODE.  
WHERE JRC ECDIS IS IN USE, PAPER CHARTS SHOULD BE THE PRIMARY MEANS OF NAVIGATION UNTIL THE ECDIS HAS BEEN PROVED TO OPERATE CORRECTLY. SEE [WWW.JRC.CO.JP/ENG/PRODUCT/MARINE/WHATSNEW/20120313/INDEX.HTML](http://WWW.JRC.CO.JP/ENG/PRODUCT/MARINE/WHATSNEW/20120313/INDEX.HTML) FOR FURTHER INFORMATION.
- 29/12 FM NAVAREA XIV COORDINATOR 182115 UTC MAR 12  
SOUTHERN OCEAN  
1. HAZARDOUS OPERATIONS SPACE DEBRIS DAILY 0056 UTC TO 0905 UTC 23 MAR TO 23 APR 12 IN AREA BOUNDED BY:  
A. 40-15S 143-49W  
B. 42-51S 141-23W  
C. 51-59S 170-00W  
D. 48-54S 171-07W  
2. CANCEL THIS MESSAGE 231005 UTC APR 12
-

**VI**

**CORRECTIONS TO ADMIRALTY LIST OF RADIO SIGNALS**  
*(NZ NTM Edition No.7 dated 30 March 2012)*

*Nil*

---

**HYDROGRAPHIC NOTE**

(For instructions, see next page)

New Zealand Hydrographic Authority  
Land Information New Zealand  
Radio New Zealand House  
155 The Terrace  
PO Box 5501  
Wellington 6145  
New Zealand

Tel: 0800 665 463 or +64 (0)4 460-0110  
Fax : +64 (0)4 460-0161  
Email: [customersupport@linz.govt.nz](mailto:customersupport@linz.govt.nz)

Date ..... Ref.No. ....

Name and address of ship or sender  
.....  
.....

Tel/Fax/Telex/Email of sender .....

General locality .....

Subject .....

Position. Lat. .... Long.....

Position fixing system used .....

Datum .....

Paper Chart/ENC affected ..... Edition.....

Dated .....

Latest Notice to Mariners held.....

Publications affected (Edition No. and date of latest supplement, page no, ID no. etc) .....

Details:

A replacement copy of Chart No. ....  
is required (see Instruction 4).

Signature of observer/reporter.....

# HYDROGRAPHIC NOTE

## Forwarding Information for Charts and Hydrographic Publications

**Note:** An acknowledgement of receipt will be sent and the information then used to the best advantage, which may mean immediate action or inclusion in a revision in due course. When a Notices to Mariners is issued, the sender's ship or name is quoted as authority unless (as sometimes happens) the information is also received in a foreign Notices to Mariners. An explanation of the use of contributions from all parts of the world would be too greater task and a further communication should only be expected when the information is of outstanding value or has unusual features.

### INSTRUCTIONS:

1. Mariners are requested to notify New Zealand Hydrographic Authority, Land Information New Zealand, 155 The Terrace, PO Box 5501, Wellington 6145, New Zealand, when new or suspected dangers to navigation are discovered, changes observed in aids to navigation, or corrections to publications seem to be necessary. The *Admiralty* publication, *The Mariner's Handbook* (NP 100), Chapter 4, gives general instructions.
2. This form and its instructions have been designed to help both the sender and the recipient. It should be used, or followed, closely, whenever appropriate. Copies of this form may be obtained gratis from the New Zealand Hydrographic Authority at the address above, or in PDF format directly from the LINZ website, [www.linz.govt.nz/hydro](http://www.linz.govt.nz/hydro).
3. When a position is defined by sextant angles or bearings (true or magnetic being specified) more than two should be used in order to provide a check. Distances observed by radar should be quoted. However, when there is a series of fixes along a ship's course, only the method of fixing and the objects used need to be indicated. Latitude and longitude should only be used specifically to position the details when they have been fixed by astronomical observations or GPS and a full description of the method, equipment and datum used should be given.
4. Paper Charts: A cutting from the largest scale paper chart is the best medium for forwarding details, the alterations and additions being shown thereon in red. When requested, a new copy will be sent in replacement of a chart that has been used to forward information, or when extensive observations have involved defacement of the observer's chart. If it is preferred to show the amendments on a tracing of the largest scale chart (rather than the chart itself) these should be in red as above, but adequate detail from the chart must be traced in black ink to enable the amendments to be fitted correctly.  
  
Electronic Navigational Charts (ENCs): A screen dump of the largest scale usage band ENC with the alterations and additions being shown thereon in red.
5. When soundings are obtained, *The Mariners Handbook* (NP 100) should be consulted. The echo sounding trace should be marked with times, depths, etc., and forwarded with the report. It is important to state whether the echo sounder is set to register depths below the surface, or below the keel; in the latter case the vessel's draught should be given. Time and date should be given in order that corrections for the height of the tide may be made where necessary. The make, name, and type of echo sounder set should also be given.
6. Modern echo sounders frequently record greater depths than the set's nominal range, e.g. with a set whose maximum is 500m a trace appearing at 50m may in fact be 550m or even 1,050m. Erroneous deep soundings beyond the sets nominal range can usually be recognised by the following:
  - (a) The trace being weaker than normal for the depth registered
  - (b) The trace appearing to pass through the transmission line
  - (c) The "feathery" nature of the trace.
7. Reports which cannot be confirmed or are lacking in certain details should not be withheld. Shortcomings should be stressed and any firm expectation of being able to check the information on a succeeding voyage should be mentioned.
8. Reports of shoal soundings, uncharted dangers and navigational aids out of order should, at the mariner's discretion, also be made by radio to the nearest coast radio station. The draught of modern tankers is such that any uncharted depth under 30 metres or 15 fathoms may be of sufficient importance to justify a radio message.



## CUMULATIVE LIST OF NEW ZEALAND NOTICES TO MARINERS

**30 March 2012**

---

### GENERAL INFORMATION

This list records the date of issue of the current edition of each chart and of subsequent relevant New Zealand Notices to Mariners up to and including **Edition No. 7 of 30 March 2012**. Users of this list are reminded that the authoritative source for information concerning current editions of New Zealand charts and the corrections that affect them are the Editions of New Zealand Notices to Mariners.

### THE CURRENT EDITION OF A CHART

When a new chart or new edition is published the date of publication is shown in the bottom outside margin of the chart. A new edition of a chart, on being published and issued as notified by a Notice to Mariners, becomes the current edition and the previous edition is superseded. Withdrawn charts and superseded editions should not be used for navigation; nor should current editions that have not been corrected for relevant Notices to Mariners.

### Published by Land Information New Zealand

*For further information contact*

New Zealand Hydrographic Authority  
Land Information New Zealand  
Radio New Zealand House  
155 The Terrace  
PO Box 550  
Wellington 6145  
New Zealand

Phone: 0800 665 463 or +64 (0)4 460 0110  
Fax: +64 (0)4 460 0161

E-mail: [customersupport@linz.govt.nz](mailto:customersupport@linz.govt.nz)  
Internet site: [www.linz.govt.nz](http://www.linz.govt.nz)

<i>Chart Number</i>	<i>Current Edition</i>	<i>Notices to Mariners Affecting Chart</i>
<b>NZ 21 (INT 641)</b>	Apr 2005	<b>2005-163-248, 2006-23, 2007-26-94-131-180, 2008-31-134, 2009-43-199, 2011-216</b>
<b>NZ 22 (INT 639)</b>	Apr 2005	<b>2009-218, 2012-32</b>
<b>NZ 23 (INT 640)</b>	Apr 2005	<b>2005-163, 2006-23-32, 2007-26-94-104-131-180, 2008-31-134-249, 2009-43-199, 2011-216</b>
<b>NZ 24</b>	Apr 2005	<b>2007-209, 2008-101</b>
<b>NZ 25 (INT 648)</b>	Apr 2005	<b>2005-163, 2006-34-114 -145, 2007-26-94-104-131-180, 2008-31-134-249</b>
<b>NZ 26</b>	Apr 2005	<b>2005-163, 2006-32</b>
<b>NZ 27</b>	Apr 2005	
<b>NZ 28</b>	Apr 2005	
<b>NZ 29</b>	Apr 2005	<b>2005-206</b>
<b>NZ 31</b>	Apr 2005	
<b>NZ 41</b>	Jan 2003	<b>2003-119, 2004-219, 2005-135</b>
<b>NZ 42</b>	Apr 2001	<b>2003-119, 2004-219, 2005-135</b>
<b>NZ 43</b>	Jun 1999	<b>1999-326, 2000-201-208, 2002-118, 2003-143, 2004-101, 2007-69-94-119-120-131, 2008-134, 2009-43, 2010-130, 2011-216</b>
<b>NZ 45</b>	Jul 2001	<b>2003-114-149, 2004-100, 2006-128-160, 2007-26-94-105-124-180, 2008-31-240</b>
<b>NZ 46</b>	Jul 2000	<b>2000-365-417-420, 2001-153-204-205, 2002-104, 2003-57-131-149-175, 2004-29-53-80, 2005-49-127-245, 2009-186, 2010-123-174</b>
<b>NZ 48</b>	Apr 2000	<b>2000-417-420, 2001-167-195-241, 2003-29-114-131-143-149, 2004-108-109-126, 2006-128-160, 2007-26-53-94-119-124-131-180, 2008-31-240, 2011-25</b>
<b>NZ 51</b>	Apr 2001	<b>2003-119, 2004-219, 2005-135, 2007-45, 2008-64</b>
<b>NZ 52</b>	Jul 2004	<b>2005-167, 2006-23, 2008-77-248, 2009-199, 2010-53-205, 2011-115-199-207, 2012-36-46</b>
<b>NZ 53</b>	Mar 2002	<b>2002-67-93-135, 2003-66-141-155-172, 2004-57-70-106-164, 2005-133-167-189, 2006-199-215, 2007-83-168-197-238, 2008-30-42-77-179-230-248, 2009-130-199, 2010-53-114-205, 2011-115-199-213-251, 2012-21</b>
<b>NZ 54</b>	Jul 1997	<b>1997-333, 1998-109-122-123-233, 2000-220-338-402, 2002-25-94-135, 2003-142, 2005-95, 2007-83</b>
<b>NZ 55</b>	Apr 1998	<b>2000-176-253, 2002-94, 2004-47-88, 2010-26</b>
<b>NZ 56</b>	Sep 2001	<b>2006-32-79-227, 2007-25</b>
<b>NZ 57</b>	Sep 2001	
<b>NZ 58</b>	Sep 2001	
<b>NZ 61</b>	Apr 1999	<b>1999-452, 2000-420, 2001-153-195-241-248, 2002-143, 2003-29-120, 2004-89-109-207, 2006-43-161, 2007-53, 2008-100, 2011-25, 2012-53</b>
<b>NZ 62</b>	Apr 1998	<b>1998-255-355, 1999-90-284, 2001-204, 2002-104, 2003-175, 2004-29-53, 2007-178, 2011-246-252</b>
<b>NZ 63</b>	Apr 1998	<b>1998-255-355-402, 1999-90-200-284-302, 2000-275-296-403, 2002-104, 2010-158, 2011-246</b>
<b>NZ 64</b>	Mar 2003	<b>2006-34-53 -145-229-240, 2010-158-196</b>
<b>NZ 66</b>	Jan 2003	<b>2006-34-53-114 -145</b>
<b>NZ 68</b>	Aug 2009	<b>2011-75-90</b>
<b>NZ 69</b>	Aug 2009	<b>2011-75-90</b>
<b>NZ 71</b>	Mar 2002	<b>2005-63-113, 2009 - 210</b>
<b>NZ 72</b>	Mar 2002	<b>2009-210, 2010-146</b>
<b>NZ 73</b>	Mar 2002	
<b>NZ 76</b>	Aug 2009	<b>2010-163</b>
<b>NZ 82 (T 82)</b>	Oct 1993	<b>1994-77-92-182-222-228-298-353, 1995-20-34-35-118-191-214-220-231-236, 1996-278, 1997-97, 1998-409, 1999-327-418, 2000-51, 2002-27, 2005-103, 2007-140, 2011-134</b>
<b>NZ 86</b>	Jun 2010	
<b>NZ 93</b>	Oct 1997	<b>2002-72-73</b>
<b>NZ 222</b>	Jun 2008	
<b>NZ 223 F</b>	Apr 1999	<b>2000-80-259-268, 2003-132-156, 2005-248, 2008-52-134-249, 2009-218</b>
<b>NZ 224 F</b>	Apr 1999	<b>2006-114-145</b>
<b>NZ 232</b>	Jun 2006	<b>2007-240, 2008-117, 2009-22, 2011-74</b>
<b>NZ 252</b>	Oct 2006	
<b>NZ 268</b>	Oct 1995	<b>1996-165-343, 1997-112-132-396, 1999-137-252, 2001-197, 2002-70, 2004-111</b>
<b>NZ 286</b>	Apr 1992	<b>1994-158-209-321, 2000-21</b>
<b>NZ 443</b>	May 2010	<b>2010-130-195, 2011-24</b>
<b>NZ 463</b>	Mar 2011	<b>2012-23</b>
<b>NZ 512</b>	Dec 1999	<b>2001-107-214, 2006-66, 2007-45, 2008-64-80-219-229</b>
<b>NZ 521</b>	Oct 2010	<b>2011-115-244, 2012-36</b>



<i>Chart Number</i>	<i>Current Edition</i>	<i>Notices to Mariners Affecting Chart</i>
<b>NZ 522</b>	Apr 2011	<b>2011-207, 2012-37</b>
<b>NZ 531</b>	Apr 2011	<b>2011-245</b>
<b>NZ 532</b>	Apr 2008	<b>2008-163-179-201, 2009-121-130-191, 2010-67, 2011-59-73-251</b>
<b>NZ 533</b>	Dec 1999	<b>2001-177, 2002-49-78-93, 2003-28, 2004-157, 2005-76-77-189, 2006-126-170-191, 2007-238, 2008-30-42-163-201, 2011-215-251</b>
<b>NZ 534</b>	Dec 1999	<b>1999-471, 2001-237, 2002-135, 2004-70, 2007-83, 2008-78-202, 2010-114</b>
<b>NZ 541</b>	Jan 1998	<b>1998-436, 2000-220-378, 2002-24-25, 2003-142, 2004-171-172, 2005-95, 2011-87-193</b>
<b>NZ 542</b>	Apr 1997	<b>1998-122-123-233, 1999-23, 2000-220-338-378, 2009-73-217, 2011-47-170-193</b>
<b>NZ 561</b>	Oct 2006	<b>2006-228, 2007-93-169, 2009-209, 2010-75</b>
<b>NZ 614</b>	Apr 2009	<b>2011-25-89-107-223</b>
<b>NZ 615</b>	Mar 2011	<b>2011-223-238</b>
<b>NZ 632</b>	Jun 2000	<b>2000-296-403, 2001-228, 2005-205-246, 2007-106, 2010-41</b>
<b>NZ 661</b>	Jun 2000	<b>2002-128, 2003-101, 2004-23, 2006-145, 2009-92, 2011-151</b>
<b>NZ 681</b>	Aug 2009	<b>2011-75-90-100</b>
<b>NZ 822 (T 822)</b>	Apr 2011	
<b>NZ 827 (T 827)</b>	Oct 1998	<b>1999-327, 2000-51, 2003-177, 2005-103</b>
<b>NZ 845</b>	Apr 2009	
<b>NZ 861</b>	Jun 2010	
<b>NZ 864</b>	Jun 2010	
<b>NZ 865</b>	Jun 2010	<b>2010-185</b>
<b>NZ 885</b>	Apr 2009	
<b>NZ 945</b>	Oct 1995	<b>2001-84, 2002-71</b>
<b>NZ 955</b>	Oct 1993	<b>1994-209, 1995-284, 1997-397, 2001-85, 2002-73</b>
<b>NZ 1414</b>	Oct 1980	<b>1983-165-174, 1990-87-192, 1991-23, 2001-242</b>
<b>NZ 2225</b>	Jun 2008	
<b>NZ 2325</b>	Jun 2006	<b>2006-144, 2007-70</b>
<b>NZ 2411</b>	Jul 2000	<b>2004-71, 2011-147</b>
<b>NZ 2681</b>	Oct 1995	<b>1997-132</b>
<b>NZ 2862</b>	Apr 1992	<b>1993-37, 1994-158-209</b>
<b>NZ 3111</b>	Jun 2008	
<b>NZ 4111</b>	Jan 2003	
<b>NZ 4212</b>	Apr 2001	<b>2001-226, 2006-216</b>
<b>NZ 4265</b>	Jul 2008	<b>2009-55, 2010-40</b>
<b>NZ 4314</b>	Jun 2004	<b>2004-176, 2005-177, 2006-129, 2008-116, 2010-212, 2011-171</b>
<b>NZ 4315</b>	Aug 2011	
<b>NZ 4421</b>	Jul 2001	<b>2003-143, 2010-157</b>
<b>NZ 4423</b>	Jul 2001	
<b>NZ 4424</b>	Jul 2001	<b>2001-98, 2004-102</b>
<b>NZ 4432</b>	Jul 2008	<b>2009-32-67, 2010-130-195</b>
<b>NZ 4541</b>	Apr 1995	<b>2001-110, 2003-114-149</b>
<b>NZ 4631</b>	Jan 2000	<b>2003-131-149</b>
<b>NZ 4632</b>	Jul 2000	<b>2003-131</b>
<b>NZ 4633</b>	Jul 2000	<b>2001-165-205, 2002-79-104, 2003-58-67, 2004-158-218, 2005-49-96-127-221-245, 2006-127, 2007-118-198, 2008-220, 2009-75, 2010-174, 2011-88-106-117, 2012-23</b>
<b>NZ 4634</b>	Jul 2000	<b>2001-165-194, 2003-58-67, 2004-158-216-218, 2005-89-127-221, 2006-159, 2007-118, 2008-220, 2011-106, 2012-23</b>
<b>NZ 5111</b>	Apr 2001	<b>2003-51, 2004-26-87, 2008-64</b>
<b>NZ 5113</b>	Apr 2009	
<b>NZ 5114</b>	Apr 2001	<b>2008-64-219, 2009-180, 2012-35</b>
<b>NZ 5121</b>	Oct 1994	
<b>NZ 5124</b>	Jul 1994	<b>1994-287-314, 1995-240-290-317, 1996-80-144-182-285-291-407, 1997-145-206-214, 1998-108-394, 2000-346-398, 2001-107-214, 2003-153, 2004-56-189, 2005-117-137-175, 2007-33-51, 2008-170, 2009-90, 2010-211, 2011-48</b>
<b>NZ 5125</b>	Jul 2004	<b>1995-30, 1996-80, 1997-20-206, 1998-296-403, 2000-346, 2001-214, 2005-117-118, 2006-66, 2007-45-51-229, 2008-80-170-229, 2009-146, 2011-48-144</b>
<b>NZ 5212</b>	Sep 1999	<b>2003-154, 2005-167</b>

<i>Chart Number</i>	<i>Current Edition</i>	<i>Notices to Mariners Affecting Chart</i>
NZ 5214	Mar 2011	
NZ 5215	Mar 2011	
NZ 5219	Apr 2010	2011-115
NZ 5221	Mar 2011	2011-116
NZ 5222	Mar 2011	
NZ 5223	Oct 2010	2011-37-145
NZ 5224	Oct 2010	2011-37
NZ 5227	Apr 2008	2009-121-191, 2011-207
NZ 5318	Sep 2001	2002-135, 2004-70, 2005-190, 2006-208, 2008-78-200, 2010-114-115-217
NZ 5321	Apr 2008	2008-155-179-193, 2009-191, 2010-67, 2011-59-214
NZ 5322	Apr 2008	2008-155-179, 2009-167-168-191, 2010-67, 2011-59-184, 2012-22
NZ 5323	Apr 2008	2008-155, 2009-167, 2010-67-89, 2011-232, 2012-22
NZ 5324	Apr 2008	2008-127-163-179-193, 2009-83-130, 2010-67, 2011-23-60-214-251
NZ 5325	Jan 2008	2008-127-164, 2009-192, 2011-23-60-214
NZ 5327	Mar 2005	2005-77, 2006-126, 2007-82-238, 2008-41-42, 2011- 251
NZ 5328	Mar 2005	2006-126, 2007-82-231-238, 2008-41-42
NZ 5411	Jul 2004	2005-78-95, 2007-239, 2009-42-66, 2010-62, 2011-87
NZ 5412	Oct 2004	2005-78-95, 2007-239, 2008-58, 2009-42-66
NZ 5413	Jan 1998	1998-362, 2000-220-425, 2002-24-25, 2003-142-185, 2004-171-172, 2005-95, 2011-87-193
NZ 5423	Jul 2001	2009-217
NZ 5551	Apr 1997	
NZ 5571	Jun 2008	2010-81
NZ 5612	Apr 2011	2012-42
NZ 6142	Jun 2008	2010-140-154-218, 2012-30-47
NZ 6144	Apr 2009	2009-228, 2011-107-108
NZ 6151	Sept 2011	
NZ 6152	Apr 1998	1998-303-334, 1999-120-185-276-452, 2001-62-76, 2002-62, 2004-49-53-173, 2005-146, 2011-89-223
NZ 6153	Mar 2011	2011-238
NZ 6154	Mar 2011	
NZ 6212	May 1999	1999-293, 2000-356, 2002-104, 2003-57, 2004-53-60, 2009-176-186
NZ 6321	Jun 2000	2000-379-403, 2001-154-228, 2002-55-63, 2004-81-174, 2005-178, 2006-33, 2012-54
NZ 6324	Apr 2009	2012-48
NZ 6422	Apr 2009	2011-109
NZ 6433	Apr 2003	
NZ 6612	Jul 2004	2005-102-157, 2008-135, 2009-153, 2011-132-151
NZ 6821	Aug 2009	2010-175
NZ 6825	Mar 2011	2011-133
NZ 6912	Jul 2001	2003-91, 2004 -82
NZ 7132	Mar 2005	
NZ 7142	Oct 1994	1997-263, 2009-111-210. 2010-155
NZ 7621	Aug 2009	2011- 253
NZ 7622	Aug 2009	
NZ 7623	Apr 1999	2005-64, 2006-54
NZ 7624	Aug 2009	2011-38
NZ 7625	Aug 2009	2011-38-146
NZ 7653	Aug 2009	2011-152
NZ 7654	Mar 2002	2002-108, 2005-90, 2006-54-89
NZ 7655	Aug 2009	
NZ 7656	Aug 2009	2011-152
NZ 8215 (T 8215)	Jan 1996	2012-31
NZ 8225 (T 8225)	May 2010	
NZ 8235 (T 8235)	Oct 1993	2004-31, 2010-109
NZ 8238 (T 8238)	Apr 2005	
NZ 8247 (T 8247)	Oct 1993	1994-182-266, 1998 -180-378, 2005-97-129

<i>Chart Number</i>	<i>Current Edition</i>	<i>Notices to Mariners Affecting Chart</i>
<b>NZ 8248 (T 8248)</b>	Oct 1993	<b>1994-182-266, 1995-262, 1998-180-378, 2005-97-129</b>
<b>NZ 8259 (T 8259)</b>	Jul 1993	
<b>NZ 8266 (T 8266)</b>	Jul 1993	<b>1993-304, 1994-87-106-346, 1995-181, 1997-298, 1998-409</b>
<b>NZ 8275 (T 8275)</b>	Apr 2010	
<b>NZ 8277 (T 8277)</b>	Apr 2010	
<b>NZ 8645</b>	Jun 2010	
<b>NZ 8655</b>	Jul 2007	<b>2007-232, 2010-185</b>
<b>NZ 8685</b>	Oct 1993	<b>1995-203-224, 1996-30-280, 1997-154-169, 1998-32, 2004-166, 2009-76</b>
<b>NZ 9558</b>	Oct 1992	<b>1994-209, 1995-126-269-357, 2002-72-95, 2003-160, 2007-191</b>
<b>NZ 14051 (INT 51)</b>	Jan 1997	<b>1997-370, 2000-43-44 -92-357-426, 2001-124, 2004-94-135, 2005-140-158-183, 2006-137-151, 2007-171-210</b>
<b>NZ 14052 (INT 52)</b>	Apr 1997	<b>1997 -264-340-377, 1998-134-181-220, 1999-80-219, 2000 -74-102-163-178-244-276-277-357-410-427, 2001-51-57, 2002-58-59-96, 2004-73-93, 2005-28-80-81-158-182-199-201-214-215-251-252, 2006-35-55-60-98-99-116-164-165-166-174-181-221, 2007-36</b>
<b>NZ 14060 (INT 60)</b>	Oct 2008	<b>2009-56</b>
<b>NZ 14061 (INT 61)</b>	Oct 2008	<b>2009-56-161</b>
<b>NZ 14065 (INT 65)</b>	Jan 1997	<b>1997-162-178, 1998 -152-195-392, 1999-137-320-338, 2002-74, 2004-103, 2005-235</b>
<b>NZ 14600 (INT 600)</b>	Jul 2007	<b>2008-52-134-249</b>
<b>NZ 14601 (INT 601)</b>	Jul 2007	<b>2007-209, 2008-52-101-134-249,</b>
<b>NZ 14602 (INT 602)</b>	Jul 2007	
<b>NZ 14604 (INT 604)</b>	Oct 1996	<b>1997-21-144-163-277, 1998-125-220, 1999-81, 2000-94-95-129-190-300-302, 2001-86-168-2002-34-42-56-57-58, 2003-133-150, 2004-40-50-63-67-91-92, 2005-27-37-81-179-180-198-214-223-250, 2006-100-150-164, 2007-36-201</b>
<b>NZ 14605 (INT 605)</b>	Jul 2007	<b>2008-143, 2009-218</b>
<b>NZ 14606 (INT 606)</b>	Jul 2007	<b>2007-233, 2008-88-143, 2009-161</b>
<b>NZ 14607 (INT 607)</b>	Apr 1997	<b>1997-278, 1999-201-213, 2000-65-311-374-380-391, 2001-124-135-169, 2002-113, 2003-128, 2004-64-127-135-142-167-178-179, 2005-148, 2006-131-181, 2009-161</b>
<b>NZ 14612</b>	Apr 1999	
<b>NZ 14613</b>	Apr 1999	<b>2000-154, 2001-135, 2004-74</b>
<b>NZ 14629 (INT 629)</b>	Apr 1997	<b>1998-212, 2000-161, 2001-51, 2002-120, 2005-28</b>
<b>NZ 14630 (INT 630)</b>	Apr 1997	<b>1997-283, 2000-169, 2001-51, 2002-72-73-120</b>
<b>NZ 14631 (INT 631)</b>	Apr 1997	<b>1997-283, 1998-132-234, 1999-327, 2000-74-175, 2001-51, 2002-27-120, 2004-41, 2005-28, 2007-140, 2008-143, 2009-218</b>
<b>NZ 14638 (INT 638)</b>	Oct 1996	<b>1997-196, 1998 -132-234-290-316-317, 1999-81-327-367, 2000-22-23-129-320, 2002-34, 2003-127-156, 2004-41, 2005-223, 2007-47, 2008-143, 2009-218, 2010-27-213, 2012-38</b>
<b>NZ 14900 (INT 900)</b>	Apr 1998	<b>2002-74, 2003-126</b>
<b>NZ 14901 (INT 9001)</b>	Jul 2007	
<b>NZ 14902 (INT 9002)</b>	Jul 2007	
<b>NZ 14903 (INT 9003)</b>	Aug 2008	
<b>NZ 14906 (INT 9006)</b>	Aug 2006	
<b>NZ 14907 (INT 9007)</b>	Aug 2006	
<b>NZ 14908 (INT 9008)</b>	Aug 2006	
<b>NZ 14909 (INT 909)</b>	Jun 2004	<b>2011-233</b>
<b>NZ 14912 (INT 9012)</b>	Aug 2006	