

NEW ZEALAND NOTICES TO MARINERS

Notices

NZ 145 – 150

© Crown Copyright 2012. All rights Reserved. Permission is not required to make analogue copies of these Notices but such copies are not to be sold.

CONTENTS

- I [Explanatory Notes.](#)
 - II [New Zealand Notices to Mariners.](#)
 - III [Corrections to New Zealand Light List.](#)
 - IV [Corrections to Sailing Directions and New Zealand Publications.](#)
 - V [Navigational Warnings \(NAVAREA XIV\).](#)
 - VI [Corrections to Admiralty List of Radio Signals.](#)
-

New Zealand Notices to Mariners are the authority for correcting New Zealand charts within the New Zealand area of charting responsibility as shown in [Annual Notice No. 1](#).

Mariners are requested to immediately inform New Zealand Hydrographic Authority, Land Information New Zealand, 155 The Terrace, PO Box 5501, Wellington 6145, New Zealand, Phone : 0800 665 463 or +64 (0)4 460-0110 Fax: +64 (0)4 460-0161 or e-mail: customersupport@linz.govt.nz, of the discovery of new or suspected dangers to navigation, or shortcomings in charts and publications. A copy of a Hydrographic Note, a convenient form on which to send such information, is included at the end of Section VI of the Fortnightly Notices to Mariners.

Changes or defects in aids to navigation should be reported to the Rescue Coordination Centre New Zealand (RCCNZ) via the nearest New Zealand Coastal Maritime Radio Station Phone : +64 (0)4 577-8030 Fax : +64 (0)4 577-8038 or +64 (0)4 577-8041 e-mail: rccnz@maritimenz.govt.nz.

Copies of these Notices can be obtained from Land Information New Zealand, Maritime New Zealand, Principal Chart Agents at the major ports of New Zealand and the Internet: www.linz.govt.nz.

EXPLANATORY NOTES

Charts. The notices in Section II give instructions for the correction of charts. Geographical positions refer to the largest scale chart unless otherwise stated. They are normally given in degrees, minutes and decimals of a minute, but may occasionally quote seconds for convenience when plotting from the graduation of some older-style charts. Bearings are true reckoned clockwise from 000° to 359°; those relating to lights are given as seen by an observer from seaward. Symbols referred to are those shown in publication Chart 5011 (*INT 1*) Symbols and Abbreviations used on Admiralty Paper Charts, published by the United Kingdom Hydrographic Office.

Alterations to depth contours, deletion of depths to make way for new detail, etc. are not mentioned unless they have some navigational significance.

Block corrections or notes accompanying notices in Section II are placed after Section VI.

Temporary and Preliminary Notices. These are indicated by (T) or (P) after the notice number. A list of [\(T\) and \(P\) Notices in force](#) is published on the LINZ website and in the fortnightly Editions of Notices to Mariners. Charts are not corrected for them before issue; they should be corrected in pencil on receipt.

Light Lists. The detailed correction to the Light List is given in Section III and may not be published in the same edition as the chart correcting notice. The entire entry for each light is printed, and an asterisk (*) is shown under the column which contains an amendment. In the case of a new light, an asterisk (*) appears under all the columns. New and extensively altered entries are intended to be pasted in. It is recommended that a manuscript entry be made for all shorter corrections.

It is emphasized that the [List of Lights](#) is the authority for lights and that many alterations, especially those of a temporary but operational nature, may only be promulgated as corrections to the List of Lights.

Sailing Directions. Corrections to Sailing Directions are given in Section IV. It is recommended that such corrections be kept together in a file with the latest list of those in force on top. The file can then be consulted when using the Current Edition of the book to see if any notices affecting the area under consideration are extant. Corrections should not be pasted into the Current Edition of the book or Supplement.

New Zealand Publications. Corrections to New Zealand Publications are given in Section IV.

Navigational Warnings (NAVAREA XIV). NAVAREA XIV Navigational Warnings that are in force at the time of publication are given in Section V.

Radio Signals. When radio signals are affected by a notice the Admiralty List of Radio Signals reference number is quoted. The detailed correction to the List of Radio Signals is given in Section VI and may be published in a later edition than the chart correcting notice. It is recommended that such corrections be kept together in a file with the latest list of those in force on top. Corrections should not be pasted into the Current Edition of the book.

Correction of Charts and Publications by the User. New Zealand Notices to Mariners contain important information and should be used to keep the specified charts and books up to date.

THE USE OF CHARTS AND ASSOCIATED PUBLICATIONS

Reliance on Charts and Associated Publications. While every effort is made to ensure the accuracy of the information on New Zealand charts and other publications, it should be appreciated that it may not always be complete and up to date. The mariner must be the final judge of the reliance to be placed on the information given, bearing in mind their particular circumstances, local pilotage guidance and the judicious use of available navigational aids.

Charts. Charts should be used with prudence: there are areas where the source data are old, incomplete or of poor quality. The mariner should use the largest scale appropriate for his particular purpose; apart from being the most detailed, the larger scales are usually corrected first. When extensive new information (such as a new hydrographic survey) is received, some months may elapse before it can be fully incorporated in published charts. On small scale charts of ocean areas where hydrographic information is, in many cases, still sparse, charted shoals may be in error as regards position, least depth and extent. Undiscovered dangers may exist, particularly away from well-established routes.

Further guidance. The Mariner's Handbook (NP 100) gives a fuller explanation of the limitations of charts. All users should study it in their own interest.

ENC/ECDIS Data Presentation and Performance Check in Ships. The International Maritime Organization (IMO) has recently indicated its concerns about operating anomalies identified in some ECDIS that fail to display important new chart features.

The International Hydrographic Organization (IHO) has produced an ENC Data Presentation and Performance Check dataset that allows mariners to check their ECDIS. The check dataset is available through ENC service providers and from the IHO website (www.iho.int) which includes instructions.

Mariners are strongly recommended to use the dataset and report the results of their checks to help the IHO identify how the different brands of ECDIS display and handle chart information. Mariners are asked to also inform the IMO, national Hydrographic Offices, ECDIS manufacturers and others, so that they can take any corrective action that may be necessary.

In order to present the most comprehensive report possible to the IMO and to further assist in resolving the issues so far identified, the IHO is keen that as many ships as possible forward their results. Reports on the results can be sent via a form provided with the data or the results can be submitted on-line through a web-form.

All relevant documentation can be downloaded free from the IHO website at: www.iho.int

II

NUMERICAL INDEX OF CHARTS AFFECTED
(NZ NTM Edition No.17 dated 17 August 2012)

NZ Chart No.	INT Chart No.	ENC No.	Notice to Mariners
NZ 45		NZ300045	146(T)
NZ 46			145, 147(T)
NZ 48			146(T)
NZ 463			145, 147(T)
		NZ300463	147(T)
NZ 615			145, 147(T)
		NZ300615	147(T)
NZ 6153			145
NZ 6154			145
NZ 6422		NZ406422	148(T)
NZ 7132		NZ407132	150(T)
		NZ507132	150(T)
NZ 14060	INT 60		149(T)
NZ 14061	INT 61		149(T)
NZ 14605	INT 605		149(T)
NZ 14638	INT 638		149(T)

NEW ZEALAND TEMPORARY AND PRELIMINARY NOTICES IN FORCE

(NZ NTM Edition No.17 dated 17 August 2012)

NZ Notice	T/P	Charts Affected	Locality and Subject
		NZ Chart, ENC Cell	
194/04	P	NZ 46, NZ 48, NZ 61, NZ 463, NZ 614, NZ 6151, NZ 6152, NZ 6153, NZ 6154	Marlborough Sounds: Use of Automated Navigation Systems
161/05	P	NZ 4633, NZ 4634	Wellington Hr.: Navigation Safety Bylaw
173/05	T	NZ 53, NZ 54, NZ 531, NZ 534, NZ 5318	Whitianga Hr.: Sandbar
37/07	T	NZ 53, NZ 532, NZ 533, NZ 5327	Firth of Thames: Moorings, Research Instruments
63/07	T	NZ 4633	Wellington Hr.: Race Marker Buoys
219/07	P	NZ 54, NZ 542	Bay of Plenty, Opotiki: Fish Haven
91/08	P	NZ 4424	W. Coast, Taharoa Hr.: Hr. Limits
131/08	T	NZ 68, NZ 69, NZ 681	Foveaux Strait, Ruapuke Is.: Seabed Obstruction
244/08	P	NZ 632, NZ 6321	Banks Peninsula: Mussel Farms
118/09	T	NZ 8275 (T 8275)	Tonga, Nuku'alofa Hr.: Light
139/09	T	NZ 845, NZ 14630 (INT 630), NZ 14631 (INT 631)	Nuie Is: Lights
242/09	P	NZ 42, NZ 4265	Kaipara Hr. Entrance: Depths
28/10	T	NZ 5321, NZ 5322, NZ405321, NZ505322	Auckland Hr. Approaches: Light
132/10	P	NZ 5113	Rangaunu Hr.: Lights, Beacons, Buoys
222/10	P	NZ 542	Whakatane: Depths
20/11	P	NZ 5411, NZ5412, NZ405411, NZ505412	Tauranga Hr.: Lights
40/11	T	NZ 4633, NZ 4634, NZ404633, NZ546341, NZ546342	Wellington Hr.: Yacht Club Race Marker Buoys
82/11	T	NZ 68, NZ 69, NZ 681, NZ 6821, NZ 6825, NZ300681, NZ506811	Foveaux Strait: Scientific Instruments
128/11	P	NZ 9558	Rarotonga Avatiu: Works in Progress
166/11	T	NZ 6321, NZ506321, NZ606321	Lyttelton Hr.: Beacon
172/11	P	NZ 4265	Kaipara Hr.: Lights, Beacons, Buoys
175/11	P	NZ 6152	Havelock: Lights, Beacons
202/11	P	NZ 6142, NZ606142	Port Nelson: Light, Beacon, Works in Progress
226/11	T	NZ 23(INT 640), NZ 26, NZ 55, NZ14600 (INT 600), NZ200023, NZ300055	Gisborne, Northeastwards: Scientific Instrument
247/11	T	NZ 54, NZ 541, NZ 542, NZ 5413, NZ300541, NZ405413	East Coast, Bay of Plenty: Waverider Buoy
26/12	P	NZ 43, NZ 4424	West Coast, Taharoa Offshore Terminal: Works in Progress
44/12	T	NZ 45, NZ 48	West Coast, South Taranaki Bight: Waverider Buoy
57/12	T	NZ 532, NZ 5324, NZ305322, NZ405324	East Coast, Tamaki Strait, Motuihe Island: East Cardinal Light Beacon
67/12	T	NZ 53, NZ 532, NZ 5324, NZ305321, NZ405324	East Coast, Waiheke Channel: Scientific Instrument
68/12	T	NZ 53, NZ 533, NZ300533	East Coast, Firth of Thames: Scientific Instrument
76/12	T	NZ 23 (INT 640) NZ 26, NZ 55, NZ 56, NZ14600 (INT 600), NZ200023, NZ300055, NZ300056	East Coast, Gisborne, Eastwards: Scientific Instruments
81/12	T	NZ 45, NZ 48, NZ 4541	West Coast, Wanganui: South Mole Light
83/12	T	NZ 614, NZ300614	North Coast, Golden Bay: Scientific Instruments
94/12	T	NZ 4633, NZ404633	South Coast, Wellington, Moa Point Southwards: Light Buoys
102/12	T	NZ 63, NZ 632, NZ300063, NZ400632	East Coast, Banks Peninsula, Okains Bay: Scientific Instrument
116/12	T	NZ 532, NZ 5324, NZ305322, NZ405324	East Coast, Waiheke Island, Matiata Bay: Lead Light
117/12	T	NZ 54, NZ 534, NZ 541, NZ 542, NZ 5411, NZ 5413, NZ300541, NZ405411, NZ405413	East Coast, Tauranga, Astrolabe Reef: Exclusion Zone
118/12	T	NZ 5324, NZ 5325, NZ405324, NZ505325	East Coast, Tamaki Strait: Buoy
119/12	T	NZ 4314, NZ404314	West Coast, Manukau Harbour Entrance: Depths
122/12	T	NZ 532, NZ 5324, NZ305322, NZ405324	Tamaki Strait, Papakohatu Island: West Cardinal Buoy
123/12	P	NZ 23 (INT 640), NZ 25 (INT 648), NZ 63, NZ 64, NZ 224F, NZ 632, NZ 6321, NZ 14600 (INT 600), NZ 14601 (INT 601), NZ14600E, NZ200025, NZ300063, NZ400632, NZ506321	East Coast, Godley Head: Light
132/12	T	NZ 4315, NZ504315	West Coast, Approaches to Onehunga: Beacons
133/12	P	NZ 8275, NZ 8277	Kingdom of Tonga, Nuku'alofa Harbour: Wharf Developments
142/12	T		South Pacific Ocean: Maritime Safety Broadcasts
144/12	T	NZ 7142, NZ407142, NZ507142	West Coast, Greymouth Harbour: Depths
150/12	T	NZ 7132, NZ407132, NZ507132	West Coast, Westport: Light

NZ 145/12 NEW ZEALAND – South Island – North Coast – Marlborough Sounds – Pilot Boarding Points, Light, Rock, Buoy.

Former notices – NZ 149(P)/11 and NZ109(P)/12 are cancelled.

Chart NZ 46 [174/10]

Insert	⓪ <i>Alpha (see Note)</i>	41° 04'.62S., 174° 18'.92E.
	⓪ <i>Bravo (see Note)</i>	41° 03'.65S., 174° 19'.85E.
	⓪	41° 15'.26S., 174° 22'.16E.
	⓪ <i>Fl(5)Y.20s</i> Y	41° 12'.95S., 174° 20'.96E.

accompanying note, QUEEN CHARLOTTE SOUND /
 TOTARANUI PILOT BOARDING STATIONS

Left below chart title

Delete	⓪	41° 05'.95S., 174° 17'.46E.
--------	---	-----------------------------

Chart NZ 463 [23/12]

Insert	⓪ <i>Alpha (see Note)</i>	41° 04'.62S., 174° 18'.92E.
	⓪ <i>Bravo (see Note)</i>	41° 03'.65S., 174° 19'.85E.
	⓪	41° 15'.26S., 174° 22'.16E.
	⓪ <i>Fl(5)Y.20s</i> Y	41° 12'.95S., 174° 20'.96E.

accompanying note, QUEEN CHARLOTTE SOUND
 (TOTARANUI) PILOT BOARDING STATIONS

below chart title

Delete	⓪	41° 05'.86S., 174° 17'.23E.
--------	---	-----------------------------

Chart NZ 615 [80/12]

Insert	⓪ <i>Alpha (see Note)</i>	41° 04'.62S., 174° 18'.92E.
	⓪ <i>Bravo (see Note)</i>	41° 03'.65S., 174° 19'.85E.
	⓪	41° 15'.26S., 174° 22'.16E.
	⓪ <i>Fl(5)Y.20s</i> Y	41° 12'.95S., 174° 20'.96E.

accompanying note, QUEEN CHARLOTTE SOUND PILOT
 BOARDING STATIONS

right of chart title

Delete	⓪	41° 05'.86S., 174° 17'.24E.
--------	---	-----------------------------

continued

continued

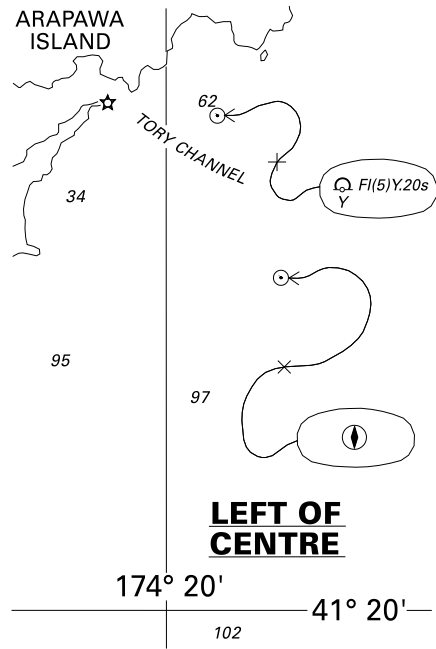
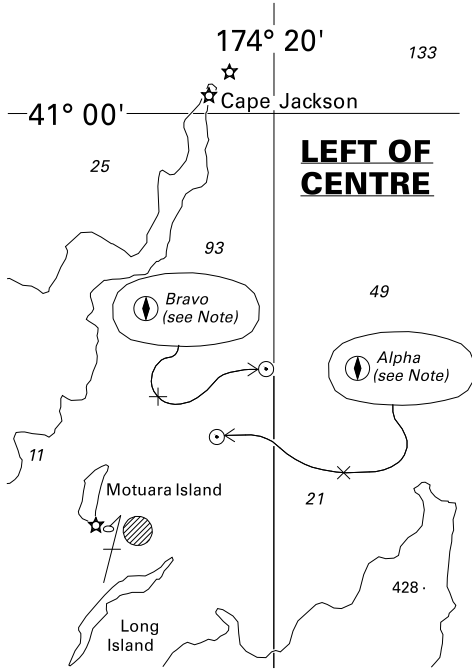
Chart NZ 6153 [238/11]

Insert		41° 15'.26S., 174° 22'.16E.
	 ★ Fl.G.3s2M G	(a) 41°12'.43S., 174°18'.29E.
	 Y Fl(5)Y.20s	41° 12'.95S., 174° 20'.96E.
Delete		41° 05'.96S., 174° 17'.25E.
		adjacent to (a) above

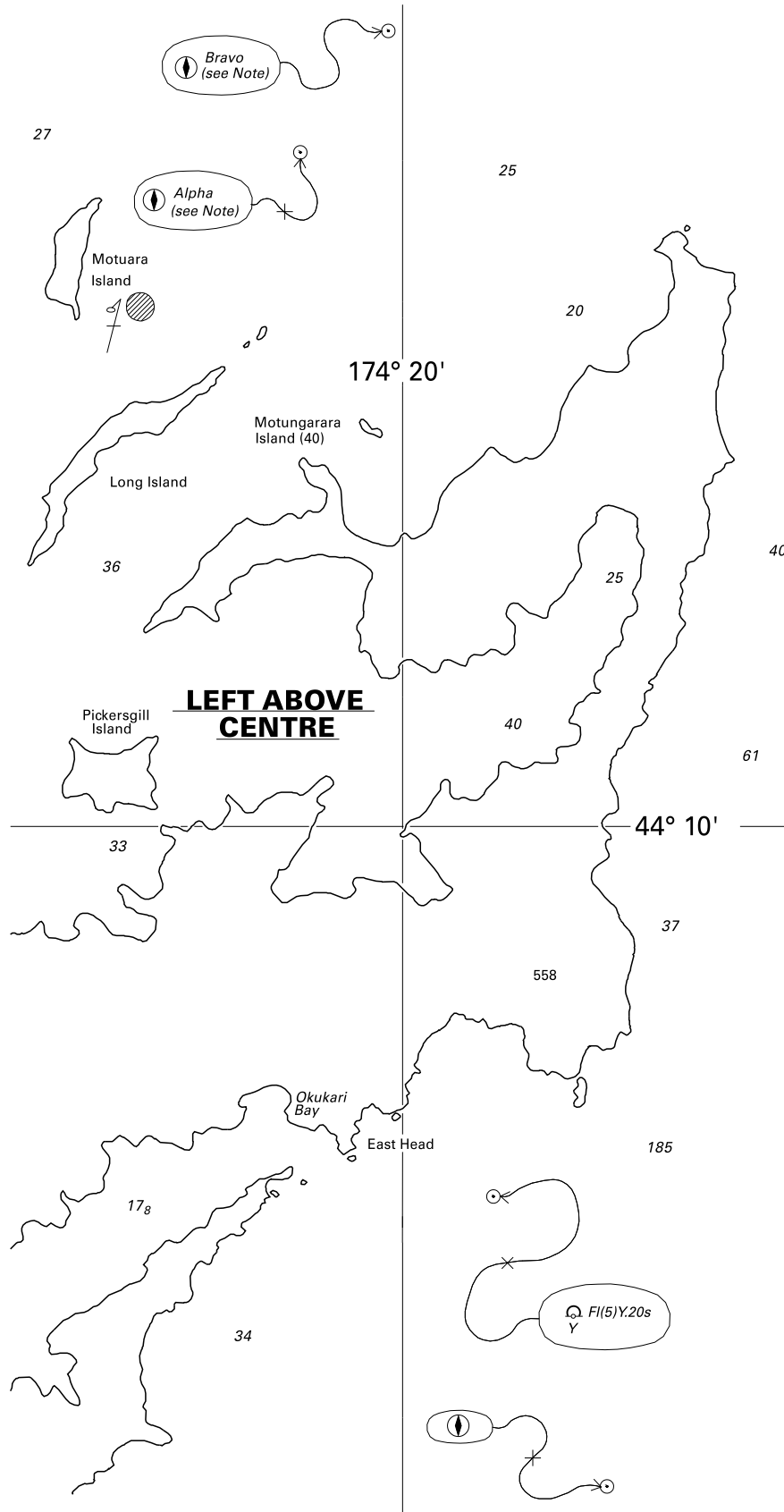
Chart NZ 6154 [NE Mar 11]

Insert	 ★ Wheki Rock Fl.G.3s2M G	(a) 41°12'.43S., 174°18'.29E.
	 Y Fl(5)Y.20s	41° 12'.95S., 174° 20'.96E.
Delete		adjacent to (a) above

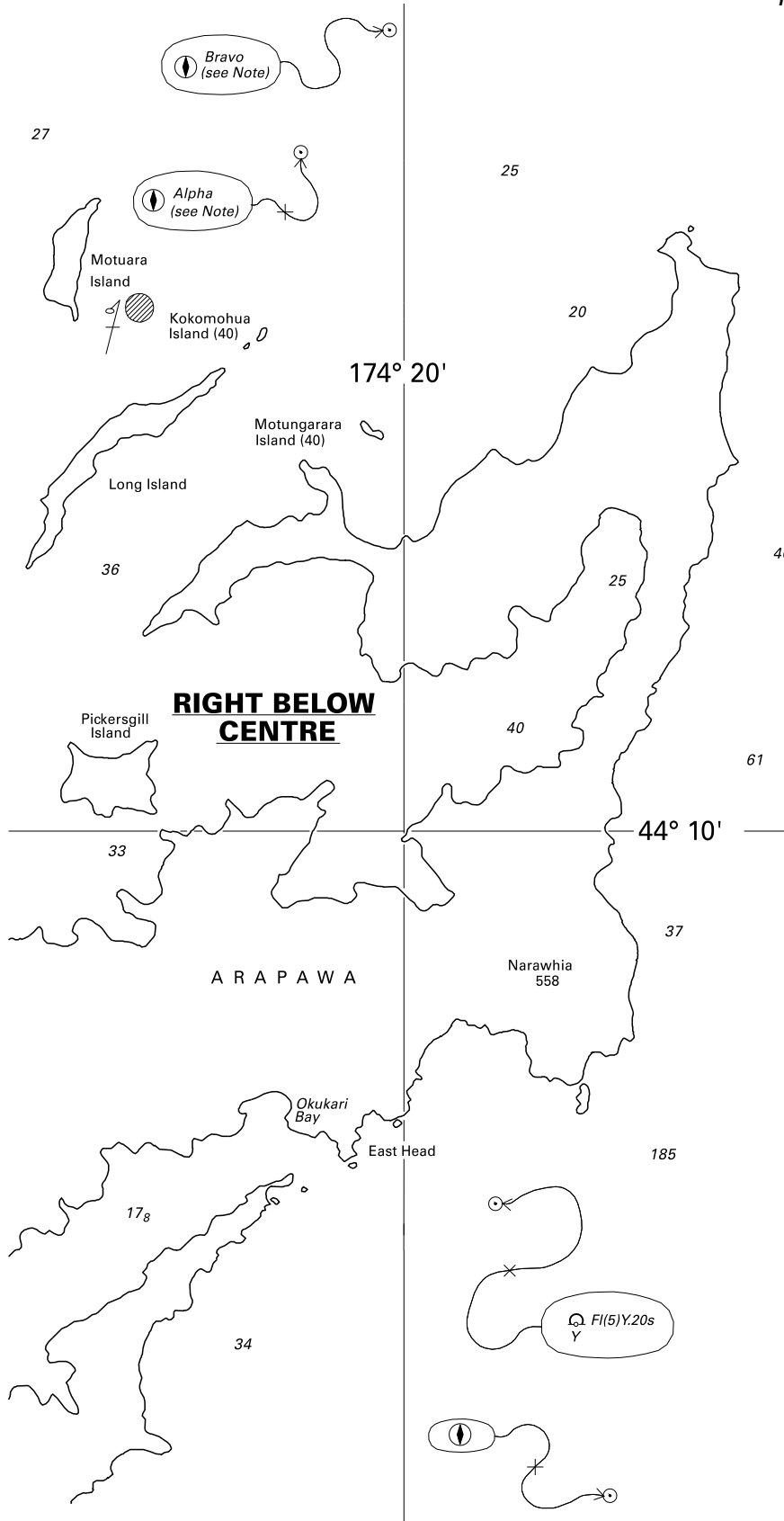
Marlborough District Council
 NZ light List K 4264.5
 NI 164/2012



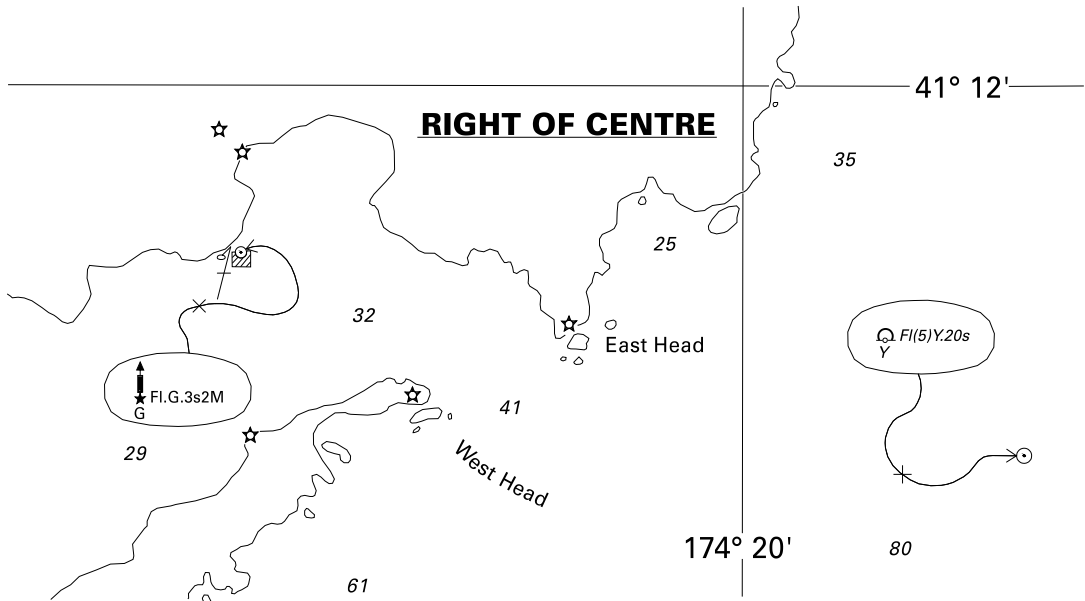
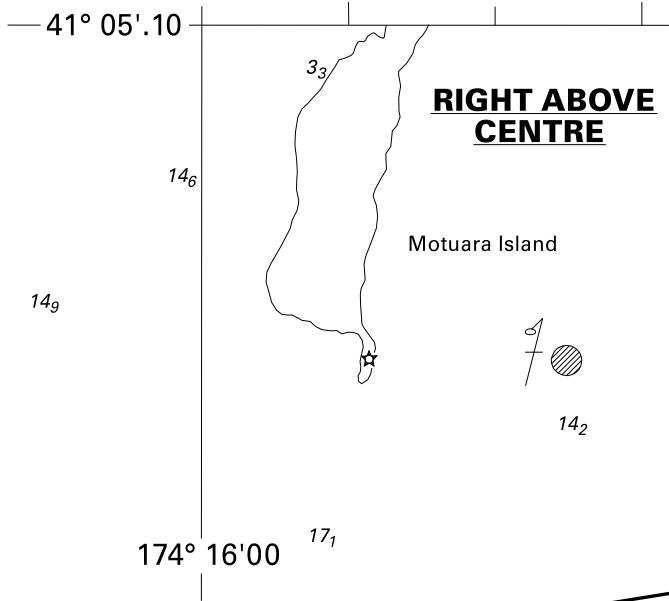
<i>Issued as a guide to chart correction.</i>		<i>Use in conjunction with the appropriate NZ Notice to Mariners.</i>	
LAST CORRECTION	NZ NTM No.	CHART No.	
NZ 174/10	NZ 145/12	NZ 46	



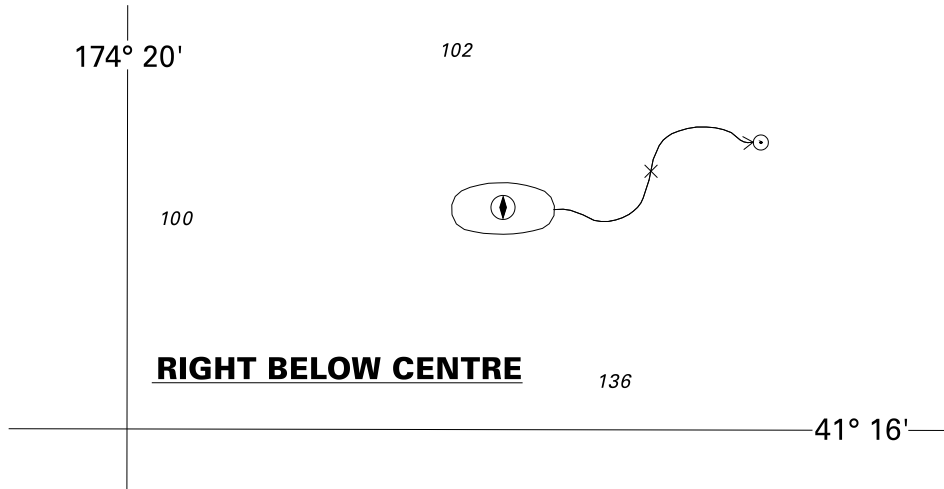
<i>Issued as a guide to chart correction.</i>		<i>Use in conjunction with the appropriate NZ Notice to Mariners.</i>	
LAST CORRECTION	NZ NTM No.	CHART No.	
NZ 23/12	NZ 145/12	NZ 463	



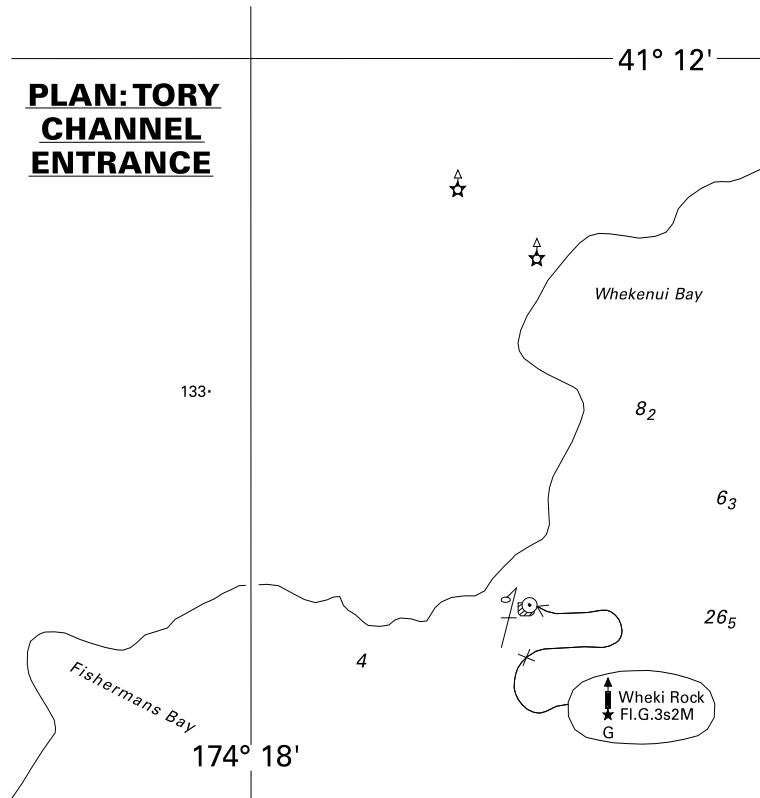
<i>Issued as a guide to chart correction.</i>		<i>Use in conjunction with the appropriate NZ Notice to Mariners.</i>	
LAST CORRECTION	NZ NTM No.	CHART No.	
NZ 80/12	NZ 145/12	NZ 615	



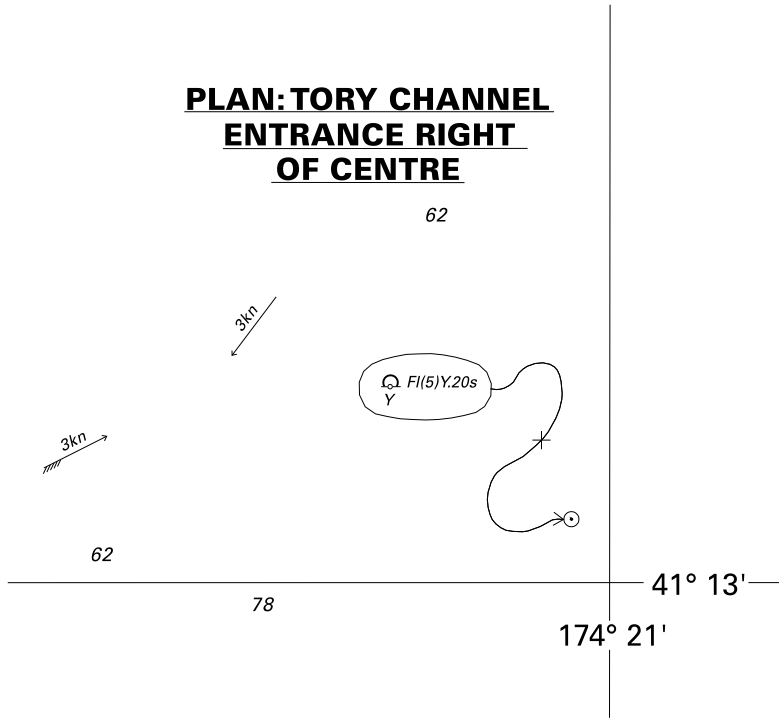
<i>Issued as a guide to chart correction.</i>		<i>Use in conjunction with the appropriate NZ Notice to Mariners.</i>	
LAST CORRECTION	NZ NTM No.	CHART No.	
NZ 238/11	NZ 145/12	NZ 6153	



<i>Issued as a guide to chart correction.</i>		<i>Use in conjunction with the appropriate NZ Notice to Mariners.</i>
LAST CORRECTION	NZ NTM No.	CHART No.
NZ 238/11	NZ 145/12	NZ 6153



<i>Issued as a guide to chart correction.</i>		<i>Use in conjunction with the appropriate NZ Notice to Mariners.</i>
LAST CORRECTION	NZ NTM No.	CHART No.
NE Mar 03	NZ 145/12	NZ 6154



<i>Issued as a guide to chart correction.</i>		<i>Use in conjunction with the appropriate NZ Notice to Mariners.</i>	
LAST CORRECTION	NZ NTM No.	CHART No.	
NE Mar 11	NZ 145/12	NZ 6154	

NZ 146(T)/12 NEW ZEALAND – North Island – West Coast – South Taranaki Bight – Drilling Operations – Works Complete.

Former notice – NZ 101(T)/12 is cancelled.

Cancel this notice on receipt.

Charts formerly affected: NZ 45, NZ 48, NZ300045

New Zealand Diving & Salvage Ltd
NI 167/2012

NZ 147(T)/12 NEW ZEALAND – Cook Strait – Scientific Instruments Recovered.

Former notice – NZ 104(T)/12 is cancelled.

Cancel this notice on receipt.

Charts formerly affected: NZ 46, NZ 463, NZ 615, NZ300463, NZ300615

NIWA

NI 166/2012

NZ 148(T)/12 NEW ZEALAND – South Island – East Coast – Timaru – Depth Restored.

Former notice – NZ 121(T)/12 is cancelled.

Cancel this notice on receipt.

Charts formerly affected: NZ 6422, NZ406422

Primeport Timaru
NI 168/2012

NZ 149(T)/12 SOUTH PACIFIC OCEAN – Kingdom of Tonga – Lau Ridge – South Minerva Reef – Light.

Former notice – NZ 158(T)/11 is cancelled.

Cancel this notice on receipt.

Charts formerly affected: NZ 14060 (INT 60), NZ 14061 (INT 61), NZ 14605 (INT 605), NZ 14638 (INT 638)

Tonga Hydrographic Unit
NI 165/2012

NZ 150(T)/12 NEW ZEALAND – South Island – West Coast – Westport – Light.

1. Eastern Breakwater Head light, Fl.R.2s9m5M, in position 41° 43'.64S., 174° 35'.36E, is extinguished until further notice.
2. Mariners are advised to exercise caution when navigating in the area.

Charts temporarily affected: NZ 7132, NZ407132, NZ507132

Westport Harbour
NZ Light List K4492
NI 170/2012

III

CORRECTIONS TO NEW ZEALAND LIGHT LIST (NZ NTM Edition No.17 dated 17 August 2012)

NEW ZEALAND NAUTICAL ALMANAC 2011/12 LIGHT LIST SECTION

4110.33	-- No. 1A	37 02.47 174 45.58	FI G 2s	3	3	Green Δ on wooden pile	
		*					
4492	- E breakwater head	41 43.64 171 35.36	FI R 2s	9	5	White round tower with red band at top	<i>f</i> 0.5 TE (2012)
		*			5		*

(NI 169, 170/2012)

IV

CORRECTIONS TO SAILING DIRECTIONS AND NEW ZEALAND PUBLICATIONS (NZ NTM Edition No.17 dated 7 August 2012)

Nil

V

NAVIGATIONAL WARNINGS

Navarea XIV warnings in force 15 August 2012

NAVAREA XIV

(South West Pacific)

- 65/12 FM NAVAREA XIV COORDINATOR 072030 UTC AUG 12
NAVAREA XIV 065/12
SOUTH PACIFIC OCEAN
KERMADEC ISLANDS NORTHWARDS
1. CANCEL NAVAREA XIV 062/12
 2. UNDERWATER VOLCANIC ACTIVITY REPORTED 061745 UTC AUG 12 IN VICINITY 25-53S 177-11W.
 3. MARINERS ARE ADVISED GAS MAY BE PRESENT AT THE SEA SURFACE AND TO KEEP WATCH FOR DISCOLOURED WATER.
- 66/12 SECURITE
FM NAVAREA XIV COORDINATOR 100350 UTC AUG 12
NAVAREA XIV 066/12
SOUTH PACIFIC OCEAN
RAOUL ISLAND WESTWARDS
- PUMICE RAFT 150NM BY 35NM ORIENTED NE-SW REPORTED
70NM WEST OF RAOUL ISLAND.
-

VI

CORRECTIONS TO ADMIRALTY LIST OF RADIO SIGNALS

(NZ NTM Edition No.17 dated 17 August 2012)

Nil

HYDROGRAPHIC NOTE

(For instructions, see next page)

New Zealand Hydrographic Authority
Land Information New Zealand
Radio New Zealand House
155 The Terrace
PO Box 5501
Wellington 6145
New Zealand

Tel: 0800 665 463 or +64 (0)4 460-0110
Fax : +64 (0)4 460-0161
Email: customersupport@linz.govt.nz

Date Ref.No.

Name and address of ship or sender
.....
.....

Tel/Fax/Telex/Email of sender

General locality

Subject

Position. Lat. Long.....

Position fixing system used

Datum

Paper Chart/ENC affected Edition.....

Dated

Latest Notice to Mariners held.....

Publications affected (Edition No. and date of latest supplement, page no, ID no. etc)

Details:

A replacement copy of Chart No.
is required (see Instruction 4).

Signature of observer/reporter.....

HYDROGRAPHIC NOTE

Forwarding Information for Charts and Hydrographic Publications

Note: An acknowledgement of receipt will be sent and the information then used to the best advantage, which may mean immediate action or inclusion in a revision in due course. When a Notices to Mariners is issued, the sender's ship or name is quoted as authority unless (as sometimes happens) the information is also received in a foreign Notices to Mariners. An explanation of the use of contributions from all parts of the world would be too greater task and a further communication should only be expected when the information is of outstanding value or has unusual features.

INSTRUCTIONS:

1. Mariners are requested to notify New Zealand Hydrographic Authority, Land Information New Zealand, 155 The Terrace, PO Box 5501, Wellington 6145, New Zealand, when new or suspected dangers to navigation are discovered, changes observed in aids to navigation, or corrections to publications seem to be necessary. The *Admiralty* publication, *The Mariner's Handbook* (NP 100), Chapter 4, gives general instructions.
2. This form and its instructions have been designed to help both the sender and the recipient. It should be used, or followed, closely, whenever appropriate. Copies of this form may be obtained gratis from the New Zealand Hydrographic Authority at the address above, or in PDF format directly from the LINZ website, www.linz.govt.nz/hydro.
3. When a position is defined by sextant angles or bearings (true or magnetic being specified) more than two should be used in order to provide a check. Distances observed by radar should be quoted. However, when there is a series of fixes along a ship's course, only the method of fixing and the objects used need to be indicated. Latitude and longitude should only be used specifically to position the details when they have been fixed by astronomical observations or GPS and a full description of the method, equipment and datum used should be given.

Electronic Navigational Charts (ENCs): A screen dump of the largest scale usage band ENC with the alterations and additions being shown thereon in red.
4. Paper Charts: A cutting from the largest scale paper chart is the best medium for forwarding details, the alterations and additions being shown thereon in red. When requested, a new copy will be sent in replacement of a chart that has been used to forward information, or when extensive observations have involved defacement of the observer's chart. If it is preferred to show the amendments on a tracing of the largest scale chart (rather than the chart itself) these should be in red as above, but adequate detail from the chart must be traced in black ink to enable the amendments to be fitted correctly.
5. When soundings are obtained, *The Mariners Handbook* (NP 100) should be consulted. The echo sounding trace should be marked with times, depths, etc., and forwarded with the report. It is important to state whether the echo sounder is set to register depths below the surface, or below the keel; in the latter case the vessel's draught should be given. Time and date should be given in order that corrections for the height of the tide may be made where necessary. The make, name, and type of echo sounder set should also be given.
6. Modern echo sounders frequently record greater depths than the set's nominal range, e.g. with a set whose maximum is 500m a trace appearing at 50m may in fact be 550m or even 1,050m. Erroneous deep soundings beyond the sets nominal range can usually be recognised by the following:
 - (a) The trace being weaker than normal for the depth registered
 - (b) The trace appearing to pass through the transmission line
 - (c) The "feathery" nature of the trace.
7. Reports which cannot be confirmed or are lacking in certain details should not be withheld. Shortcomings should be stressed and any firm expectation of being able to check the information on a succeeding voyage should be mentioned.
8. Reports of shoal soundings, uncharted dangers and navigational aids out of order should, at the mariner's discretion, also be made by radio to the nearest coast radio station. The draught of modern tankers is such that any uncharted depth under 30 metres or 15 fathoms may be of sufficient importance to justify a radio message.

To accompany New Zealand Notice to Mariners No. 145/12

Chart No. NZ 46

QUEEN CHARLOTTE SOUND / TOTARANUI
PILOT BOARDING STATIONS
Vessels arriving at the Northern Entrance to Queen Charlotte Sound/Totaranui will be directed to Alpha pilot boarding station. Bravo pilot boarding station will only be used in heavy weather.

Chart No. NZ 463

QUEEN CHARLOTTE SOUND (TOTARANUI)
PILOT BOARDING STATIONS
Vessels arriving at the Northern Entrance to Queen Charlotte Sound will be directed to Alpha pilot boarding station. Bravo pilot boarding station will only be used in heavy weather.

Chart No. NZ 615

QUEEN CHARLOTTE SOUND
PILOT BOARDING STATIONS
Vessels arriving at the Northern Entrance to Queen Charlotte Sound (Totaranui) will be directed to Alpha pilot boarding station. Bravo pilot boarding station will only be used in heavy weather.