

NEW ZEALAND NOTICES TO MARINERS

Notices

NZ 161 – 168

© Crown Copyright 2012. All rights Reserved. Permission is not required to make analogue copies of these Notices but such copies are not to be sold.

CONTENTS

- [I Explanatory Notes.](#)
 - [II New Zealand Notices to Mariners.](#)
 - [III Corrections to New Zealand Light List.](#)
 - [IV Corrections to Sailing Directions and New Zealand Publications.](#)
 - [V Navigational Warnings \(NAVAREA XIV\).](#)
 - [VI Corrections to Admiralty List of Radio Signals.](#)
-

New Zealand Notices to Mariners are the authority for correcting New Zealand charts within the New Zealand area of charting responsibility as shown in [Annual Notice No. 1](#).

Mariners are requested to immediately inform New Zealand Hydrographic Authority, Land Information New Zealand, 155 The Terrace, PO Box 5501, Wellington 6145, New Zealand, Phone : 0800 665 463 or +64 (0)4 460-0110 Fax: +64 (0)4 460-0161 or e-mail: customersupport@linz.govt.nz, of the discovery of new or suspected dangers to navigation, or shortcomings in charts and publications. A copy of a Hydrographic Note, a convenient form on which to send such information, is included at the end of Section VI of the Fortnightly Notices to Mariners.

Changes or defects in aids to navigation should be reported to the Rescue Coordination Centre New Zealand (RCCNZ) via the nearest New Zealand Coastal Maritime Radio Station Phone : +64 (0)4 577-8030 Fax : +64 (0)4 577-8038 or +64 (0)4 577-8041 e-mail: rccnz@maritimenz.govt.nz.

Copies of these Notices can be obtained from Land Information New Zealand, Maritime New Zealand, Principal Chart Agents at the major ports of New Zealand and the Internet: www.linz.govt.nz.

EXPLANATORY NOTES

Charts. The notices in Section II give instructions for the correction of charts. Geographical positions refer to the largest scale chart unless otherwise stated. They are normally given in degrees, minutes and decimals of a minute, but may occasionally quote seconds for convenience when plotting from the graduation of some older-style charts. Bearings are true reckoned clockwise from 000° to 359°; those relating to lights are given as seen by an observer from seaward. Symbols referred to are those shown in publication Chart 5011 (*INT 1*) Symbols and Abbreviations used on Admiralty Paper Charts, published by the United Kingdom Hydrographic Office.

Alterations to depth contours, deletion of depths to make way for new detail, etc. are not mentioned unless they have some navigational significance.

Block corrections or notes accompanying notices in Section II are placed after Section VI.

Temporary and Preliminary Notices. These are indicated by (T) or (P) after the notice number. A list of [\(T\) and \(P\) Notices in force](#) is published on the LINZ website and in the fortnightly Editions of Notices to Mariners. Charts are not corrected for them before issue; they should be corrected in pencil on receipt.

Light Lists. The detailed correction to the Light List is given in Section III and may not be published in the same edition as the chart correcting notice. The entire entry for each light is printed, and an asterisk (*) is shown under the column which contains an amendment. In the case of a new light, an asterisk (*) appears under all the columns. New and extensively altered entries are intended to be pasted in. It is recommended that a manuscript entry be made for all shorter corrections.

It is emphasized that the [List of Lights](#) is the authority for lights and that many alterations, especially those of a temporary but operational nature, may only be promulgated as corrections to the List of Lights.

Sailing Directions. Corrections to Sailing Directions are given in Section IV. It is recommended that such corrections be kept together in a file with the latest list of those in force on top. The file can then be consulted when using the Current Edition of the book to see if any notices affecting the area under consideration are extant. Corrections should not be pasted into the Current Edition of the book or Supplement.

New Zealand Publications. Corrections to New Zealand Publications are given in Section IV.

Navigational Warnings (NAVAREA XIV). NAVAREA XIV Navigational Warnings that are in force at the time of publication are given in Section V.

Radio Signals. When radio signals are affected by a notice the Admiralty List of Radio Signals reference number is quoted. The detailed correction to the List of Radio Signals is given in Section VI and may be published in a later edition than the chart correcting notice. It is recommended that such corrections be kept together in a file with the latest list of those in force on top. Corrections should not be pasted into the Current Edition of the book.

Correction of Charts and Publications by the User. New Zealand Notices to Mariners contain important information and should be used to keep the specified charts and books up to date.

THE USE OF CHARTS AND ASSOCIATED PUBLICATIONS

Reliance on Charts and Associated Publications. While every effort is made to ensure the accuracy of the information on New Zealand charts and other publications, it should be appreciated that it may not always be complete and up to date. The mariner must be the final judge of the reliance to be placed on the information given, bearing in mind their particular circumstances, local pilotage guidance and the judicious use of available navigational aids.

Charts. Charts should be used with prudence: there are areas where the source data are old, incomplete or of poor quality. The mariner should use the largest scale appropriate for his particular purpose; apart from being the most detailed, the larger scales are usually corrected first. When extensive new information (such as a new hydrographic survey) is received, some months may elapse before it can be fully incorporated in published charts. On small scale charts of ocean areas where hydrographic information is, in many cases, still sparse, charted shoals may be in error as regards position, least depth and extent. Undiscovered dangers may exist, particularly away from well-established routes.

Further guidance. The Mariner's Handbook (NP 100) gives a fuller explanation of the limitations of charts. All users should study it in their own interest.

ENC/ECDIS Data Presentation and Performance Check in Ships. The International Maritime Organization (IMO) has recently indicated its concerns about operating anomalies identified in some ECDIS that fail to display important new chart features.

The International Hydrographic Organization (IHO) has produced an ENC Data Presentation and Performance Check dataset that allows mariners to check their ECDIS. The check dataset is available through ENC service providers and from the IHO website (www.iho.int) which includes instructions.

Mariners are strongly recommended to use the dataset and report the results of their checks to help the IHO identify how the different brands of ECDIS display and handle chart information. Mariners are asked to also inform the IMO, national Hydrographic Offices, ECDIS manufacturers and others, so that they can take any corrective action that may be necessary.

In order to present the most comprehensive report possible to the IMO and to further assist in resolving the issues so far identified, the IHO is keen that as many ships as possible forward their results. Reports on the results can be sent via a form provided with the data or the results can be submitted on-line through a web-form.

All relevant documentation can be downloaded free from the IHO website at: www.iho.int

II

NUMERICAL INDEX OF CHARTS AFFECTED
(NZ NTM Edition No. 20 dated 28 September 2012)

NZ Chart No.	INT Chart No.	ENC No.	Notice to Mariners
NZ 45			168(T)
NZ 48			168(T)
NZ 54			165(T)
NZ 463			163
NZ 521			162
NZ 541		NZ300541	165(T)
NZ 542		NZ300541	165(T)
NZ 615			163
NZ 4541			168(T)
NZ 4633		NZ404633	166(T), 167(T)
NZ 5214			162
NZ 5219			162
NZ 5413		NZ405413	165(T)
NZ 6153			163

NEW ZEALAND TEMPORARY AND PRELIMINARY NOTICES IN FORCE

(NZ NTM Edition No. 20 dated 28 September 2012)

NZ Notice	T/P	Charts Affected	Locality and Subject
		NZ Chart, ENC Cell	
194/04	P	NZ 46, NZ 48, NZ 61, NZ 463, NZ 614, NZ 6151, NZ 6152, NZ 6153, NZ 6154	Marlborough Sounds: Use of Automated Navigation Systems
173/05	T	NZ 53, NZ 54, NZ 531, NZ 534, NZ 5318	Whitianga Hr.: Sandbar
37/07	T	NZ 53, NZ 532, NZ 533, NZ 5327	Firth of Thames: Moorings, Research Instruments
219/07	P	NZ 54, NZ 542	Bay of Plenty, Opotiki: Fish Haven
91/08	P	NZ 4424	W. Coast, Taharoa Hr.: Hr. Limits
131/08	T	NZ 68, NZ 69, NZ 681	Foveaux Strait, Ruapuke Is.: Seabed Obstruction
244/08	P	NZ 632, NZ 6321	Banks Peninsula: Mussel Farms
118/09	T	NZ 8275 (T 8275)	Tonga, Nuku'alofa Hr.: Light
139/09	T	NZ 845, NZ 14630 (INT 630), NZ 14631 (INT 631)	Nuie Is: Lights
242/09	P	NZ 42, NZ 4265	Kaipara Hr. Entrance: Depths
28/10	T	NZ 5321, NZ 5322, NZ405321, NZ505322	Auckland Hr. Approaches: Light
132/10	P	NZ 5113	Rangaunu Hr.: Lights, Beacons, Buoys
222/10	P	NZ 542	Whakatane: Depths
20/11	P	NZ 5411, NZ5412, NZ405411, NZ505412	Tauranga Hr.: Lights
82/11	T	NZ 68, NZ 69, NZ 681, NZ 6821, NZ 6825, NZ300681, NZ506811	Foveaux Strait: Scientific Instruments
128/11	P	NZ 9558	Rarotonga Avatiu: Works in Progress
166/11	T	NZ 6321, NZ506321, NZ606321	Lyttelton Hr.: Beacon
172/11	P	NZ 4265	Kaipara Hr.: Lights, Beacons, Buoys
175/11	P	NZ 6152	Havelock: Lights, Beacons
202/11	P	NZ 6142, NZ606142	Port Nelson: Light, Beacon, Works in Progress
226/11	T	NZ 23(INT 640), NZ 26, NZ 55, NZ14600 (INT 600), NZ200023, NZ300055	Gisborne, Northeastwards: Scientific Instrument
247/11	T	NZ 54, NZ 541, NZ 542, NZ 5413, NZ300541, NZ405413	East Coast, Bay of Plenty: Waverider Buoy
26/12	P	NZ 43, NZ 4424	West Coast, Taharoa Offshore Terminal: Works in Progress
44/12	T	NZ 45, NZ 48	West Coast, South Taranaki Bight: Waverider Buoy
67/12	T	NZ 53, NZ 532, NZ 5324, NZ305321, NZ405324	East Coast, Waiheke Channel: Scientific Instrument
68/12	T	NZ 53, NZ 533, NZ300533	East Coast, Firth of Thames: Scientific Instrument
76/12	T	NZ 23 (INT 640) NZ 26, NZ 55, NZ 56, NZ14600 (INT 600), NZ200023, NZ300055, NZ300056	East Coast, Gisborne, Eastwards: Scientific Instruments
83/12	T	NZ 614, NZ300614	North Coast, Golden Bay: Scientific Instruments
102/12	T	NZ 63, NZ 632, NZ300063, NZ400632	East Coast, Banks Peninsula, Okains Bay: Scientific Instrument
116/12	T	NZ 532, NZ 5324, NZ305322, NZ405324	East Coast, Waiheke Island, Matiata Bay: Lead Light
118/12	T	NZ 5324, NZ 5325, NZ405324, NZ505325	East Coast, Tamaki Strait: Buoy
119/12	T	NZ 4314, NZ404314	West Coast, Manukau Harbour Entrance: Depths
122/12	T	NZ 532, NZ 5324, NZ305322, NZ405324	Tamaki Strait, Papakohatu Island: West Cardinal Buoy
123/12	P	NZ 23 (INT 640), NZ 25 (INT 648), NZ 63, NZ 64, NZ 224F, NZ 632, NZ 6321, NZ 14600 (INT 600), NZ 14601 (INT 601), NZ14600E, NZ200025, NZ300063, NZ400632, NZ506321	East Coast, Godley Head: Light
132/12	T	NZ 4315, NZ504315	West Coast, Approaches to Onehunga: Beacons
133/12	P	NZ 8275, NZ 8277	Kingdom of Tonga, Nuku'alofa Harbour: Wharf Developments
142/12	T		South Pacific Ocean: Maritime Safety Broadcasts
144/12	T	NZ 7142, NZ407142, NZ507142	West Coast, Greymouth Harbour: Depths
154/12	T	NZ 71, NZ 7132, NZ300071, NZ407132, NZ507132	West Coast, Westport: Light
159/12	P	NZ 541, NZ 5413, NZ300541, NZ405413	East Coast, Tauranga, Motiti Island: Underwater Rocks
160/12	T	NZ 632, NZ 6321, NZ400632, NZ506321, NZ606321	East Coast, Port of Lyttelton: Depths
165/12	T	NZ 54, NZ 541, NZ 542, NZ 5413, NZ300541, NZ405413	East Coast, Tauranga, Astrolabe Reef: Exclusion Zone
167/12	T	NZ 4633, NZ404633	South Coast, Wellington, Moa Point Southwards: Subsurface Buoys

NZ 161/12 BRITISH ADMIRALTY PUBLICATIONS – New Editions Published.

<i>NP No.</i>	<i>Title</i>	<i>Date</i>	<i>Remarks</i>
NP 281(2)	Admiralty List of Radio Signals. Maritime Radio Stations The Americas, Far East and Oceania.	20/09/12	Updated to 25/07/2012. First amendments in NM week 38/12. The 2011/12 Edition of NP281(2) is cancelled.
NP 286(5)	Admiralty List of Radio Signals. Pilot Services, Vessel Traffic Services and Port Operations. North America, Canada and Greenland.	27/09/12	Updated to 07/08/2012. First amendments in NM week 39/12. The 2011/12 Edition of NP286(5) is cancelled.

UKHO Weekly Edition 38/12, 39/12
NI 185/2012

NZ 162/12 NEW ZEALAND – North Island – East Coast – Marsden Point – Buoy.

Chart NZ 521 [98/12]

Replace  *Fl.(5)Y.20s* with  *Fl.Y.2s* 35° 53.01S., 174° 32'.91E.
Y Y

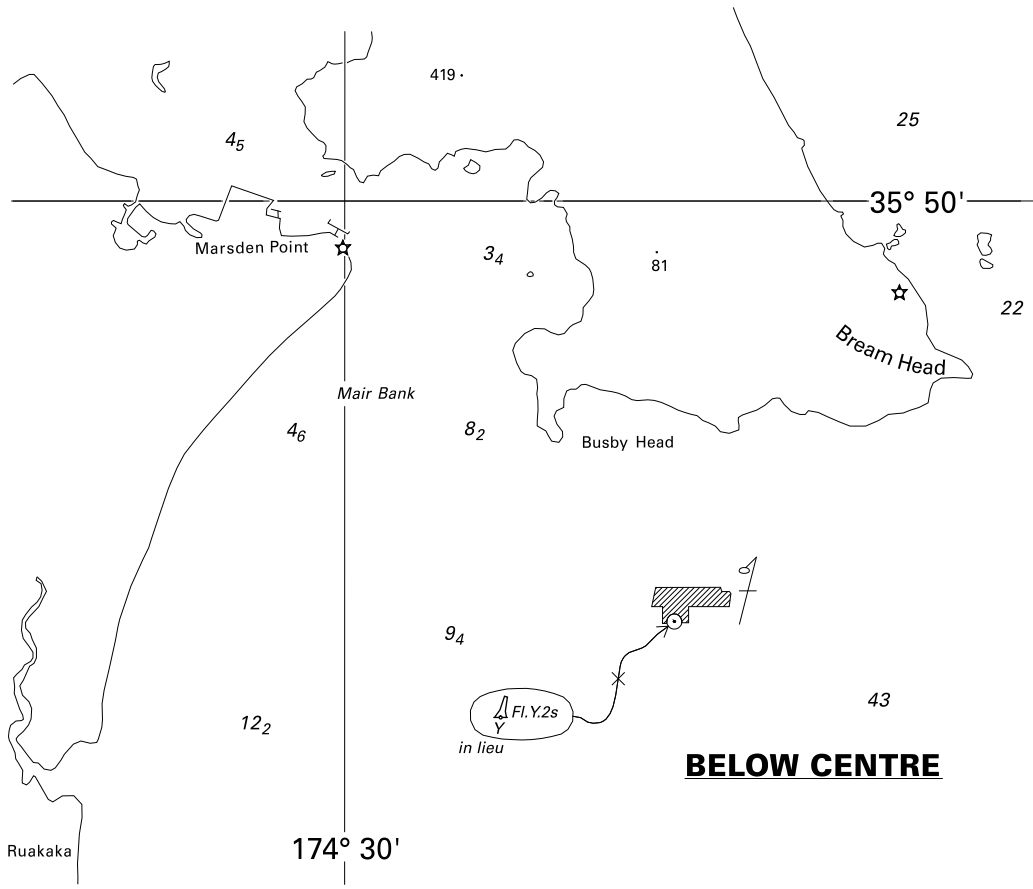
Chart NZ 5214 [NE Mar 11]

Replace  *Fl.(5)Y.20s* with  *Fl.Y.2s* 35° 52'.99S., 174° 32'.90E.
Y Y

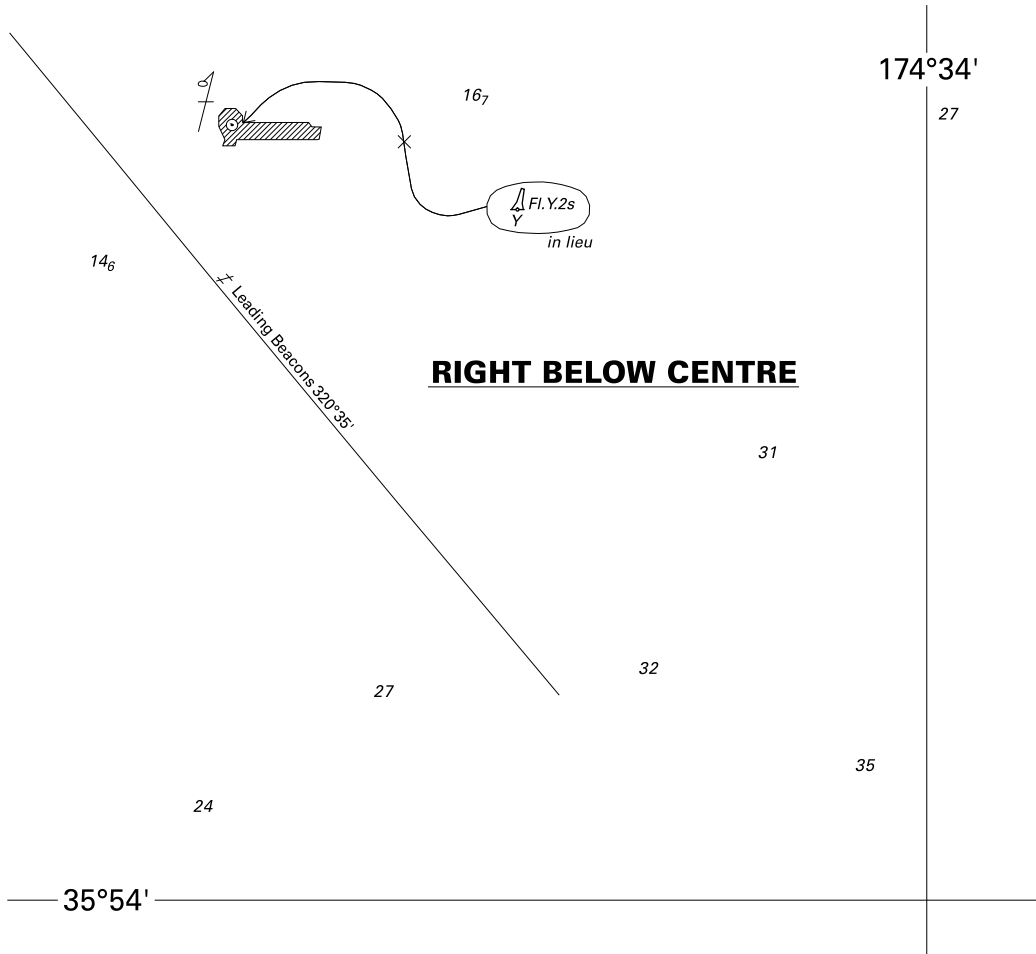
Chart NZ 5219 [NE May 12]

Replace  *Fl.(5)Y.20s* with  *Fl.Y.2s* 35° 52'.99S., 174° 32'.92E.
Y Y

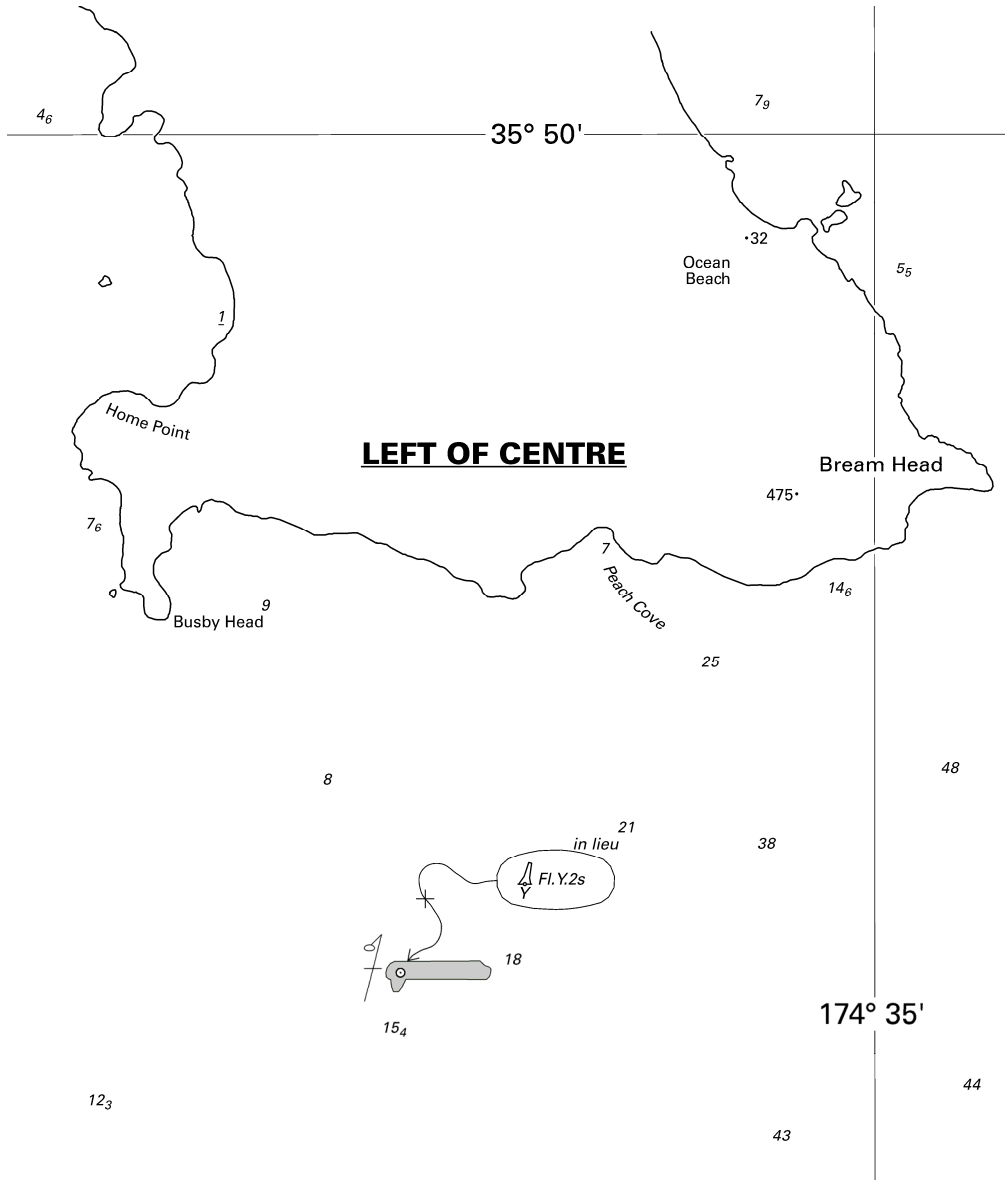
Northport Ltd
NI 178/2012



<i>Issued as a guide to chart correction.</i>		<i>Use in conjunction with the appropriate NZ Notice to Mariners.</i>	
LAST CORRECTION	NZ NTM No.	CHART No.	
98/12	NZ 162/12	NZ 521	



<i>Issued as a guide to chart correction.</i>		<i>Use in conjunction with the appropriate NZ Notice to Mariners.</i>	
LAST CORRECTION	NZ NTM No.	CHART No.	
NE Mar 11	NZ 162/12	NZ 5214	



<i>Issued as a guide to chart correction.</i>		<i>Use in conjunction with the appropriate NZ Notice to Mariners.</i>	
LAST CORRECTION	NZ NTM No.	CHART No.	
NE May 12	NZ 162/12	NZ 5219	

NZ 163/12 NEW ZEALAND – South Island – North Coast – Marlborough Sounds - Light.

Chart NZ 463 [145/12]

Insert ★ LFI.WRG.10s6m10M (a) 41° 10'.35S., 174° 12'.02E.
Sectors at light as follows: (a) above
G 219° - 221° (2°)
W 221° - 224° (3°)
R 224° - 226° (2°)

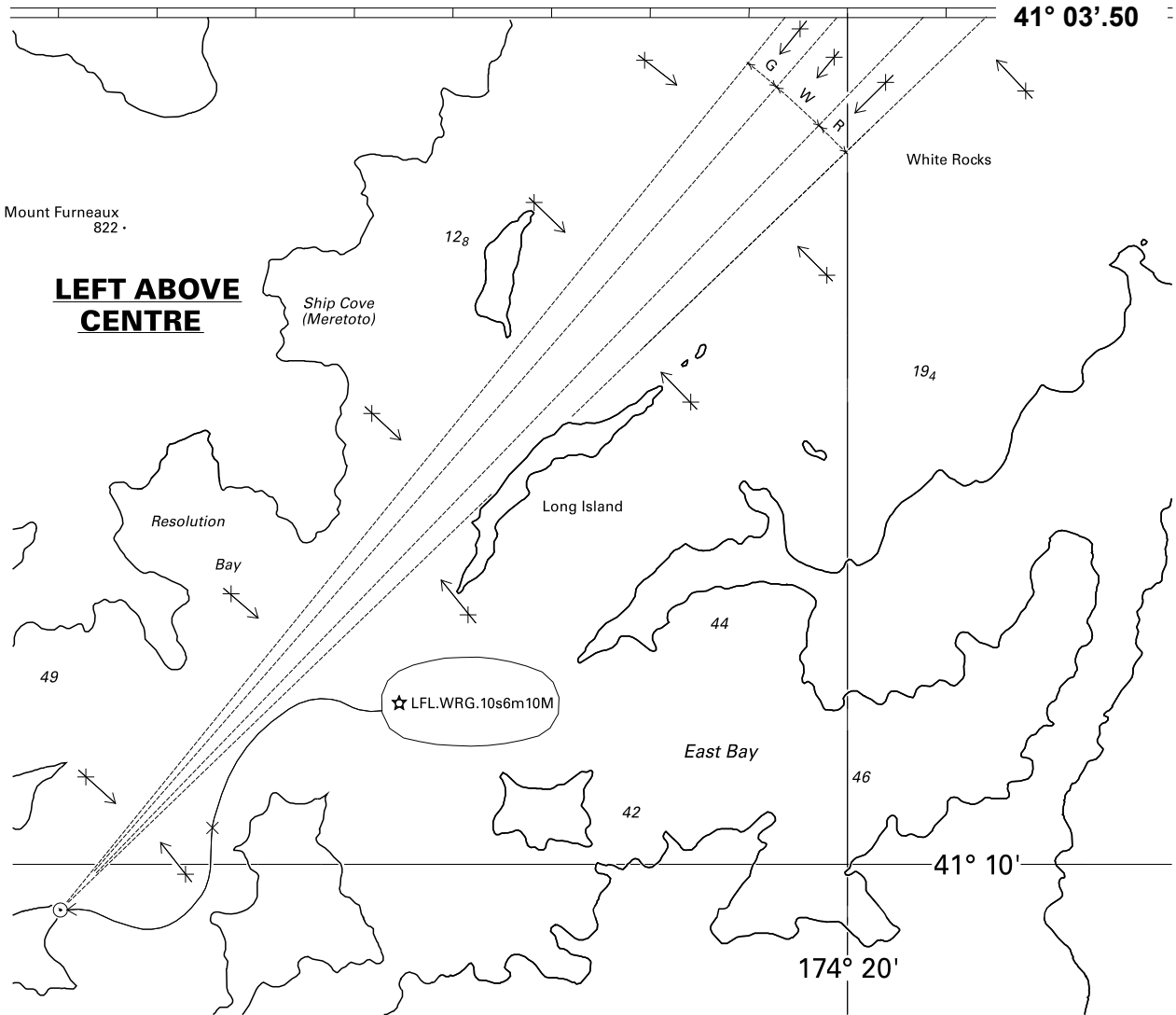
Chart NZ 615 [145/12]

Insert ★ LFI.WRG.10s6m10M (a) 41° 10'.35S., 174° 12'.02E.
Sectors at light as follows: (a) above
G 219° - 221° (2°)
W 221° - 224° (3°)
R 224° - 226° (2°)

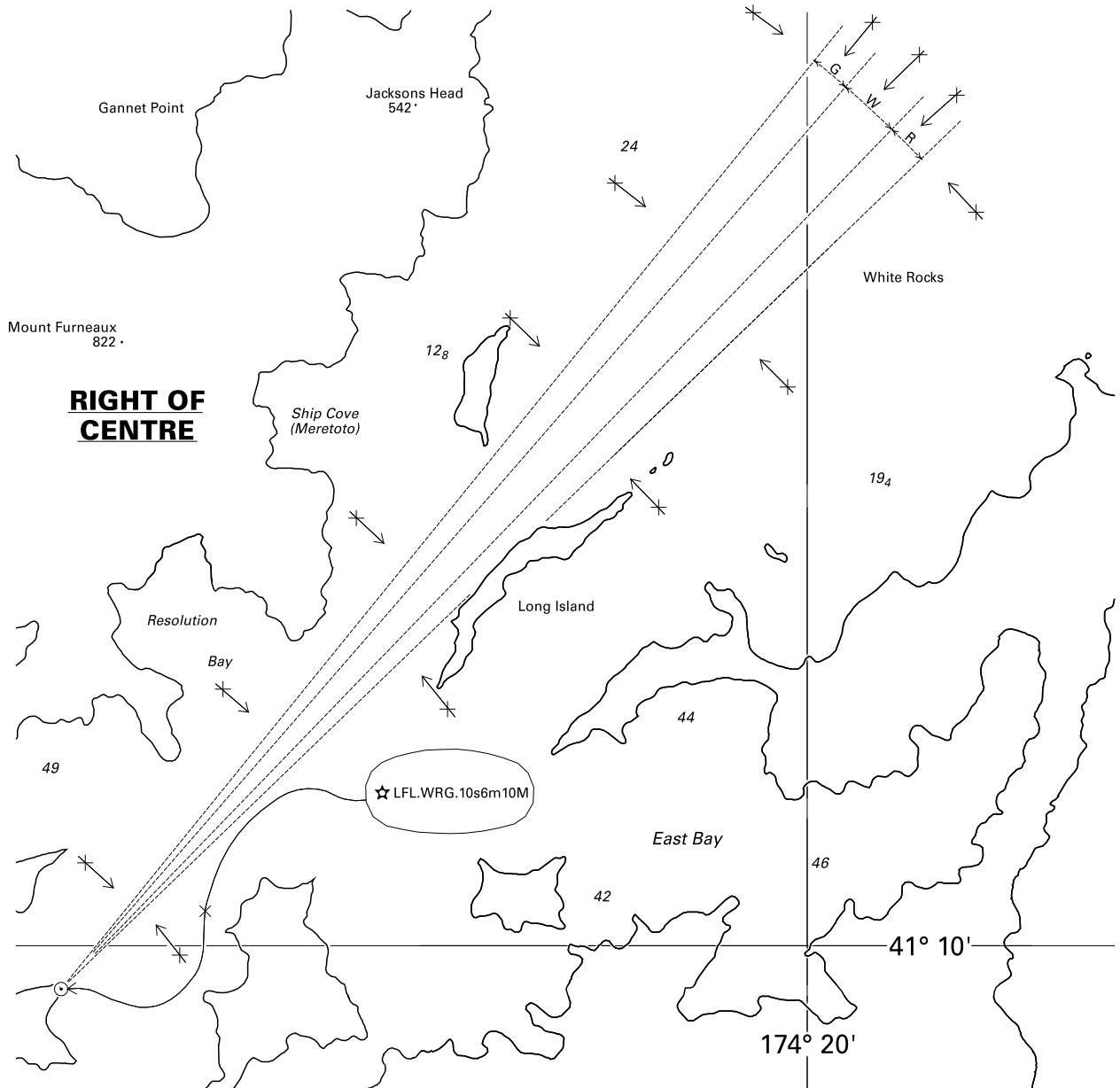
Chart NZ 6153 [145/12]

Insert ★ LFI.WRG.10s6m10M (a) 41° 10'.35S., 174° 12'.02E.
Sectors at light as follows: (a) above
G 219° - 221° (2°)
W 221° - 224° (3°)
R 224° - 226° (2°)

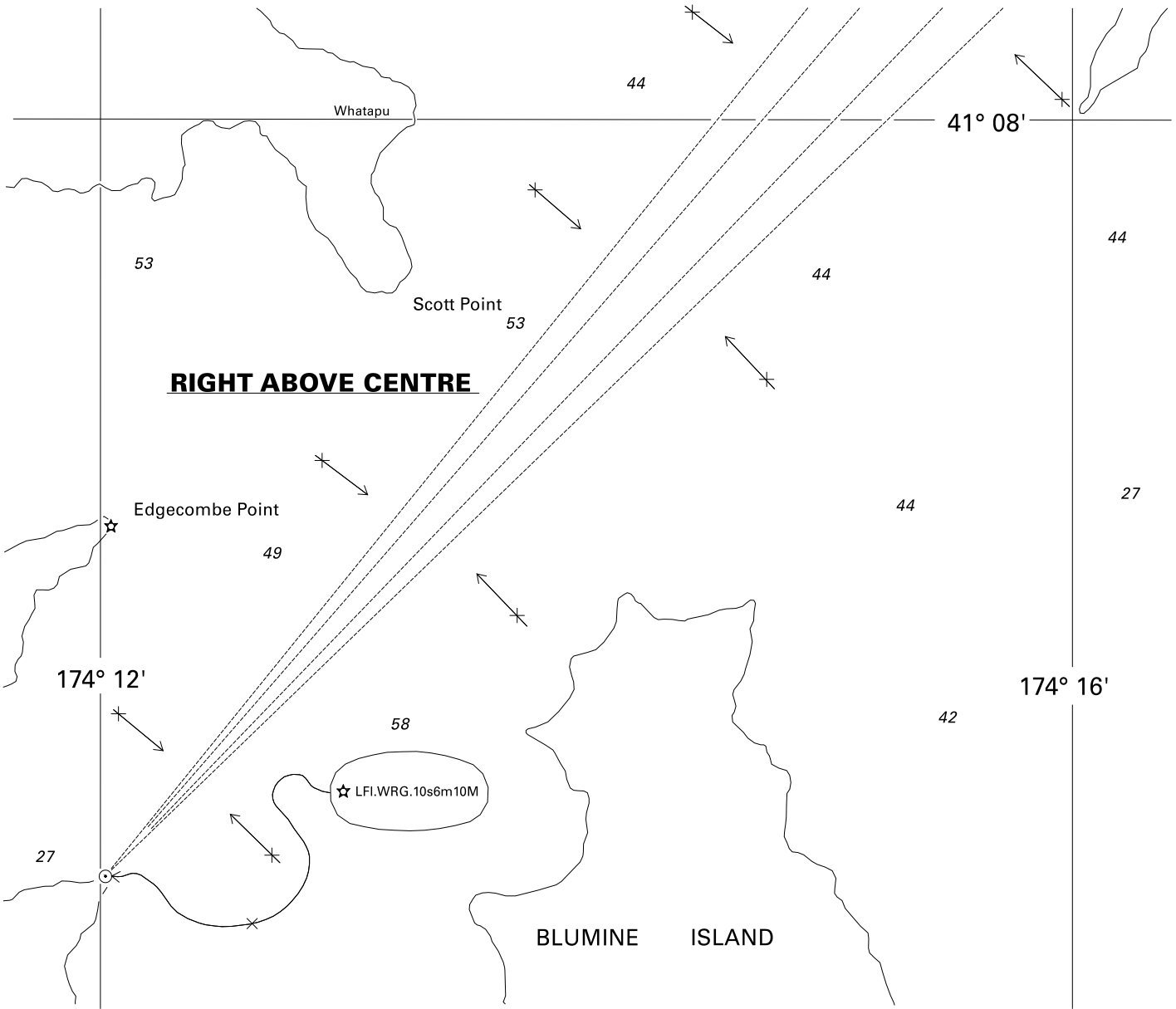
MarlboroughDistrict Council
NZ light List K 4249.5
NI 182/2012



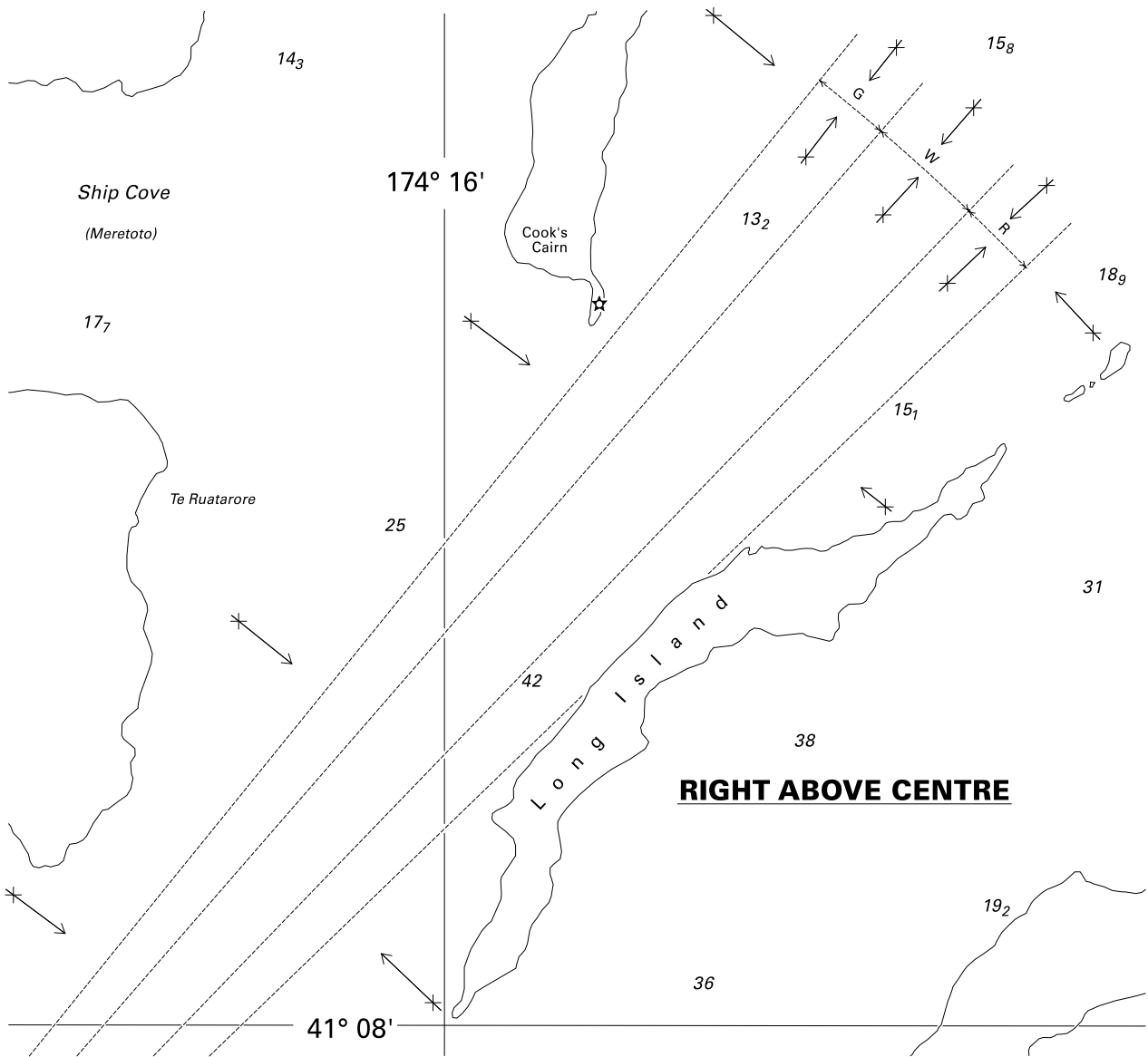
<i>Issued as a guide to chart correction.</i>		<i>Use in conjunction with the appropriate NZ Notice to Mariners.</i>	
LAST CORRECTION	NZ NTM No.	CHART No.	
NZ 145/12	NZ 163/12	NZ 463	



<i>Issued as a guide to chart correction.</i>		<i>Use in conjunction with the appropriate NZ Notice to Mariners.</i>	
LAST CORRECTION	NZ NTM No.	CHART No.	
NZ 145/12	NZ 163/12	NZ 615	



<i>Issued as a guide to chart correction.</i>		<i>Use in conjunction with the appropriate NZ Notice to Mariners.</i>	
LAST CORRECTION	NZ NTM No.	CHART No.	
NZ 145/12	NZ 163/12	NZ 6153	



<i>Issued as a guide to chart correction.</i>		<i>Use in conjunction with the appropriate NZ Notice to Mariners.</i>	
LAST CORRECTION	NZ NTM No.	CHART No.	
NZ 145/12	NZ 163/12	NZ 6153	

NZ 164/12 NEW ZEALAND PUBLICATIONS – Cumulative List of New Zealand Notices to Mariners.

The Cumulative List of New Zealand Notices to Mariners, corrected up to Edition 20/12 dated 28 September 2012 is attached as an accompanying supplement to this Edition.

New Zealand Hydrographic Authority
NI 184/2012

NZ 165(T)/12 NEW ZEALAND – North Island – East Coast – Tauranga – Astrolabe Reef – Exclusion Zone.

Former notice – NZ 158(T)/12 is cancelled.

1. Mariners are advised that a temporary Exclusion Zone has been set up around the stranded vessel M.V. *Rena* and Astrolabe Reef in the Bay of Plenty near the approaches to the Port of Tauranga, until further notice.
2. The Bay of Plenty Regional Harbourmaster has closed an area of sea within 2 NM of the M.V. *Rena* in position 37° 32'.42S., 176° 25'.73E.
3. The Harbourmaster has directed that no vessel, craft or person may access the area of sea within the above area unless authorised by:
 - a. The Bay of Plenty Harbour Master; or
 - b. The salvage master for the M.V. *Rena*
4. This direction is made by the Harbourmaster pursuant to clauses 2.17.1 and 3.11 of the Bay of Plenty Regional Navigation Safety Bylaw 2010. Anyone breaching this direction commits an offence and is liable to a fine not exceeding \$20,000: section 239(1) and 242(4) of the Local Government Act 2002.
- * 5. Containers and/or debris constituting a seabed obstruction, outside the 2 NM closed area, have been reported at the following locations:
 - 37°34.79S., 176°25.72E
 - 37°34.54S., 176°25.66E
 - 37°31.77S., 176°16.17E
 - 37°31.39S., 176°20.86E
 - 37°30.32S., 176°18.96E
 - 37°34.85S., 176°25.26E

Mariners engaged in seabed trawling activities are advised to remain clear of the above locations.

* indicates new or revised entry

Charts temporarily affected – NZ 54, NZ 541, NZ 542, NZ 5413, NZ300541, NZ405413

Bay of Plenty Regional Council
NI 192/2012

NZ 166(T)/12 NEW ZEALAND – North Island – South Coast – Wellington – Moa Point Southwards – Light buoys.

Former notice – NZ 94(T)/12 is cancelled.

Cancel this notice on receipt.

Charts formerly affected – NZ 4633, NZ404633

Power Projects Limited
NI 189/2012

**NZ 167(T)/12 NEW ZEALAND – North Island – South Coast – Wellington – Moa Point Southwards –
Subsurface buoys.**

1. Subsea buoys have been deployed 2m off the seabed within the area bounded by:

41° 21'.35S., 174° 48'.29E.

41° 21'.46S., 174° 48'.29E.

41° 21'.40S., 174° 48'.22E.

41° 21'.40S., 174° 48'.36E.

2. Mariners are advised to exercise caution when navigating in the area.

Charts temporarily affected – NZ 4633, NZ404633

Power Projects Limited
NI 190/2012

NZ 168(T)/12 NEW ZEALAND – North Island – West Coast – Wanganui – South Mole Light.

Former notice – NZ 81(T)/12 is cancelled.

Cancel this notice on receipt.

Charts formerly affected – NZ 45, NZ 48, NZ 4541

Port of Wanganui
NZ Light List K4074
NI 188/2012

III

CORRECTIONS TO NEW ZEALAND LIGHT LIST (NZ NTM Edition No. 20 dated 28 September 2012)

NEW ZEALAND NAUTICAL ALMANAC 2012/13 LIGHT LIST SECTION

4074	- S Mole Head	39 57.00 174 58.90	FI G 1.5s	10	5	Green steel structure 5	<i>fl 0.4</i>	
4249.5	- Farnham Point	41 10.35 174 12.02	LFI 10s	6	10	White metal tower	<i>fl 2, ec 8</i> G 219° - 221° (2°) W 221° - 224° (3°) R 224° - 226° (2°)	*
*	*	*	*	*	*	*		*
4405	- No. 3 Reach. Ldg Lts 313° 25'. Front	46 35.52 169 20.61	Iso G 2s	7	5	White tower on pile beacon		<i>fl 0.5</i>
		*						

(NI 182, 188/2012)

IV

CORRECTIONS TO SAILING DIRECTIONS AND NEW ZEALAND PUBLICATIONS (NZ NTM Edition No. 20 dated 28 September 2012)

NP51 New Zealand Pilot (2010 Edition)

Queen Charlotte Sound – Troy Channel — Directions; pilot boarding positions

114

Paragraph 4.155 1 lines 5-9 *Replace by:*

Pilotage is compulsory for all vessels of more than 500 gt within the entire Queen Charlotte Sound, subject to exemption by law. Pilot normally boards at Alpha pilot boarding position (41°04'·62S 174°18'·92E), but in heavy weather pilot boards at Bravo pilot boarding position (41°03'·65S 174°19'·85E).

115

Paragraph 4.162 2 lines 4-7 *Replace by:*

Thence to a position 2 miles NE of Motuara Island Light (white metal framework tower, 5 m in height) (41°06'·0S 174°16'·6E), in the vicinity of Alpha pilot boarding position (41°04'·62S 174°18'·92E).

Paragraph 4.163 2 lines 1-4 *Replace by:*

Thence the track continues SW to Alpha pilot boarding position (41°04'·62S 174°18'·92E) 2 miles NE of Motuara Island. A dangerous rock marked by a beacon (N cardinal) lies about ½ mile N of the island.

Paragraph 4.164 1 lines 1-2 *Replace by:*

From the vicinity of Alpha pilot boarding position (41°04'·62S 174°18'·92E), the track...

Paragraph 4.175 2 lines 1-3 *Replace by:*

Pilot boarding place. By special arrangement with the Harbour Authority pilots board in position 41°15'·26S 174°22'·16E. In view of the heavy ferry traffic...

New Zealand Notice 17/145/12
(SDD 2012000 165047)

[36/12]

V

NAVIGATIONAL WARNINGS

Navarea XIV warnings in force 26 September 2012

NAVAREA XIV

(South West Pacific)

- 76/12 FM NAVAREA XIV COORDINATOR 070350 UTC SEP 12
NAVAREA XIV 76/12
DISPLAY ANOMALIES IN SOME ECDIS.
1. SOME ELECTRONIC CHART DISPLAY AND INFORMATION SYSTEMS (ECDIS) MAY EXHIBIT OPERATING ANOMALIES. THE INTERNATIONAL MARITIME ORGANIZATION (IMO) CIRCULAR SN.1/CIRC. 312 (WWW.IMO.ORG/OURWORK/CIRCULARS/PAGES/IMODOCS.ASPX) (REGISTRATION REQUIRED) LISTS IDENTIFIED ANOMALIES, THEIR CHARACTERISTICS AND REMEDIAL ADVICE. MARINERS ARE REMINDED THAT THEY SHOULD ACCESS THE INTERNATIONAL HYDROGRAPHIC ORGANIZATION (IHO) DATA PRESENTATION AND PERFORMANCE CHECK DATASET (WWW.IHO.INT IHO NEWS) AND ENSURE THAT ALL INSTALLED ECDIS UNITS ARE CHECKED.
2. CANCEL NAVAREA XIV 74/12
- 84/12 FM NAVAREA XIV COORDINATOR 192120 UTC SEP 12
NAVAREA XIV 84/12
SOUTH PACIFIC OCEAN
RAOUL ISLAND WESTWARDS
PUMICE ON OR NEAR SURFACE REPORTED 17 SEP 12 IN AREA BOUNDED BY:
A. 28-00S 178-00W
B. 30-00S 178-00W
C. 30-00S 178-00E
D. 28-00S 178-00E
- 85/12 FM NAVAREA XIV COORDINATOR 202130 SEP 12
NAVAREA XIV 085/12
SOUTH PACIFIC AND SOUTHERN OCEAN
1. HAZARDOUS OPERATIONS SPACE DEBRIS FROM 270215 UTC TO 270520 UTC SEP 12 IN AREA BOUNDED BY:
A. 50-19S 157-24W
B. 47-51S 143-48W
C. 43-57S 131-46W
D. 45-31S 130-30W
E. 47-56S 136-23W
F. 51-16S 149-37W
G. 52-06S 156-55W
2. AND FROM 272035 UTC TO 272340 UTC SEP 12 IN AREA BOUNDED BY:
H. 34-35S 143-54W
I. 40-53S 133-39W
J. 46-07S 121-28W
K. 47-43S 122-38W
L. 45-30S 129-09W
M. 39-33S 140-24W
N. 35-55S 145-22W
3. AND FROM 280225 UTC TO 280530 UTC SEP 12 IN AREA BOUNDED BY:
O. 48-56S 156-43W
P. 45-29S 144-14W
Q. 40-51S 133-25W
R. 42-20S 132-02W
S. 45-05S 137-18W
T. 49-17S 149-11W
U. 50-39S 155-53W
4. CANCEL THIS MESSAGE 280630 UTC SEP 12
-

VI

CORRECTIONS TO ADMIRALTY LIST OF RADIO SIGNALS (NZ NTM Edition No. 20 dated 28 September 2012)

VOLUME 1, PART 2, NP 281(2), 2011/12

Published Wk 40/11
(Last Updates: Weekly Edition No. 33 dated 16 August 2012)

THE 2012/13 EDITION OF THIS VOLUME HAS NOW BEEN PUBLISHED
THE 2011/12 EDITION IS CANCELLED

VOLUME 1, PART 2, NP 281(2), 2012/13

Published Wk 38/12

RECORD OF UPDATES

PAGE ii, NEW EDITION, First Updates.

Insert:

This edition was published in week 38/12.

The first Weekly Notice to Mariners was issued in week 38/12.

UKHO 38/12

VOLUME 2, NP 282, 2012/13

Published Wk 11/12
(Last Updates: Weekly Edition No. 38 dated 20 September 2012)

PAGE 160, AUSTRALIA, above Mermaid Strait Lt Buoy entry.

Insert:

Goods Island Rear Ldg Lt	10°33'·91S 142°09'·13E	995031023		Real	
-----------------------------	------------------------	-----------	--	------	--

Auscoast Warning 234/12 (RSDRA2012000182882) 39/12

PAGE 160, AUSTRALIA, below Pluto A Platform entry.

Insert:

Point Richards Channel Entrance Lt Bn	38°04'·95S 144°39'·94E	995031042		Real	
Point Richards Channel 4A	38°05'·34S 144°37'·32E	995036038	Port Hand Mark	Virtual	
Point Richards Channel 6A	38°05'·57S 144°36'·50E	995036039	Port Hand Mark	Virtual	

Australian Notice 18/893/12 (RSDRA2012000182882) and Victorian Notice 115/12 (RSDRA2012000183405) 39/12

VOLUME 6, PART 4, NP 286(4), 2012/13

Published Wk 31/12

(Last Updates: Weekly Edition No. 35 dated 30 August 2012)

PAGE 273, NEW ZEALAND, PICTON (PORT MARLBOROUGH), Pilots, PROCEDURE, section (3).

Delete and replace by:

- (3) **Pilot boards** in the following positions:
- (a) Alpha: 41°04'·62S 174°18'·92E
 - (b) Bravo: 41°03'·65S 174°19'·85E (heavy weather)
 - (c) 41°15'·26S 174°22'·16E (Tory Channel)

New Zealand Notice 145/17/12. (RSDRA2012000165047). 36/12

PAGE 277, NEW ZEALAND, TORY CHANNEL, above Reporting System section.

Insert:

Pilots

For details see PICTON.

New Zealand Notice 145/17/12. (RSDRA2012000165047). 36/12

(NI 187/2012)

HYDROGRAPHIC NOTE

(For instructions, see next page)

New Zealand Hydrographic Authority
Land Information New Zealand
Radio New Zealand House
155 The Terrace
PO Box 5501
Wellington 6145
New Zealand

Tel: 0800 665 463 or +64 (0)4 460-0110
Fax : +64 (0)4 460-0161
Email: customersupport@linz.govt.nz

Date Ref.No.

Name and address of ship or sender
.....
.....

Tel/Fax/Telex/Email of sender

General locality

Subject

Position. Lat. Long.....

Position fixing system used

Datum

Paper Chart/ENC affected Edition.....

Dated

Latest Notice to Mariners held.....

Publications affected (Edition No. and date of latest supplement, page no, ID no. etc)

Details:

A replacement copy of Chart No.
is required (see Instruction 4).

Signature of observer/reporter.....

HYDROGRAPHIC NOTE

Forwarding Information for Charts and Hydrographic Publications

Note: An acknowledgement of receipt will be sent and the information then used to the best advantage, which may mean immediate action or inclusion in a revision in due course. When a Notices to Mariners is issued, the sender's ship or name is quoted as authority unless (as sometimes happens) the information is also received in a foreign Notices to Mariners. An explanation of the use of contributions from all parts of the world would be too greater task and a further communication should only be expected when the information is of outstanding value or has unusual features.

INSTRUCTIONS:

1. Mariners are requested to notify New Zealand Hydrographic Authority, Land Information New Zealand, 155 The Terrace, PO Box 5501, Wellington 6145, New Zealand, when new or suspected dangers to navigation are discovered, changes observed in aids to navigation, or corrections to publications seem to be necessary. The *Admiralty* publication, *The Mariner's Handbook* (NP 100), Chapter 4, gives general instructions.
2. This form and its instructions have been designed to help both the sender and the recipient. It should be used, or followed, closely, whenever appropriate. Copies of this form may be obtained gratis from the New Zealand Hydrographic Authority at the address above, or in PDF format directly from the LINZ website, www.linz.govt.nz/hydro.
3. When a position is defined by sextant angles or bearings (true or magnetic being specified) more than two should be used in order to provide a check. Distances observed by radar should be quoted. However, when there is a series of fixes along a ship's course, only the method of fixing and the objects used need to be indicated. Latitude and longitude should only be used specifically to position the details when they have been fixed by astronomical observations or GPS and a full description of the method, equipment and datum used should be given.
4. Paper Charts: A cutting from the largest scale paper chart is the best medium for forwarding details, the alterations and additions being shown thereon in red. When requested, a new copy will be sent in replacement of a chart that has been used to forward information, or when extensive observations have involved defacement of the observer's chart. If it is preferred to show the amendments on a tracing of the largest scale chart (rather than the chart itself) these should be in red as above, but adequate detail from the chart must be traced in black ink to enable the amendments to be fitted correctly.

Electronic Navigational Charts (ENCs): A screen dump of the largest scale usage band ENC with the alterations and additions being shown thereon in red.
5. When soundings are obtained, *The Mariners Handbook* (NP 100) should be consulted. The echo sounding trace should be marked with times, depths, etc., and forwarded with the report. It is important to state whether the echo sounder is set to register depths below the surface, or below the keel; in the latter case the vessel's draught should be given. Time and date should be given in order that corrections for the height of the tide may be made where necessary. The make, name, and type of echo sounder set should also be given.
6. Modern echo sounders frequently record greater depths than the set's nominal range, e.g. with a set whose maximum is 500m a trace appearing at 50m may in fact be 550m or even 1,050m. Erroneous deep soundings beyond the sets nominal range can usually be recognised by the following:
 - (a) The trace being weaker than normal for the depth registered
 - (b) The trace appearing to pass through the transmission line
 - (c) The "feathery" nature of the trace.
7. Reports which cannot be confirmed or are lacking in certain details should not be withheld. Shortcomings should be stressed and any firm expectation of being able to check the information on a succeeding voyage should be mentioned.
8. Reports of shoal soundings, uncharted dangers and navigational aids out of order should, at the mariner's discretion, also be made by radio to the nearest coast radio station. The draught of modern tankers is such that any uncharted depth under 30 metres or 15 fathoms may be of sufficient importance to justify a radio message.



CUMULATIVE LIST OF NEW ZEALAND NOTICES TO MARINERS

28 September 2012

GENERAL INFORMATION

This list records the date of issue of the current edition of each chart and of subsequent relevant New Zealand Notices to Mariners up to and including **Edition No. 20 of 28 September 2012**. Users of this list are reminded that the authoritative source for information concerning current editions of New Zealand charts and the corrections that affect them are the Editions of New Zealand Notices to Mariners.

THE CURRENT EDITION OF A CHART

When a new chart or new edition is published the date of publication is shown in the bottom outside margin of the chart. A new edition of a chart, on being published and issued as notified by a Notice to Mariners, becomes the current edition and the previous edition is superseded. Withdrawn charts and superseded editions should not be used for navigation; nor should current editions that have not been corrected for relevant Notices to Mariners.

Published by Land Information New Zealand

For further information contact

New Zealand Hydrographic Authority
Land Information New Zealand
Radio New Zealand House
155 The Terrace
PO Box 550
Wellington 6145
New Zealand

Phone: 0800 665 463 or +64 (0)4 460 0110

Fax: +64 (0)4 460 0161

E-mail: customersupport@linz.govt.nz

Internet site: www.linz.govt.nz

NZ 21 (INT 641)	Apr 2005	2005-163-248, 2006-23, 2007-26-94-131-180, 2008-31-134, 2009-43-199, 2011-216
NZ 22 (INT 639)	Jun 2012	2012-151
NZ 23 (INT 640)	Jun 2012	
NZ 24	Apr 2005	2007-209, 2008-101
NZ 25 (INT 648)	Jun 2012	
NZ 26	Apr 2005	2005-163, 2006-32
NZ 27	Apr 2005	
NZ 28	Apr 2005	
NZ 29	Apr 2005	2005-206
NZ 31	Apr 2005	
NZ 41	Jan 2003	2003-119, 2004-219, 2005-135
NZ 42	Apr 2001	2003-119, 2004-219, 2005-135
NZ 43	Jun 1999	1999-326, 2000-201-208, 2002-118, 2003-143, 2004-101, 2007-69-94-119-120-131, 2008-134, 2009-43, 2010-130, 2011-216, 2012-73
NZ 45	Jul 2001	2003-114-149, 2004-100, 2006-128-160, 2007-26-94-105-124-180, 2008-31-240, 2012-66-73
NZ 46	Jul 2000	2000-365-417-420, 2001-153-204-205, 2002-104, 2003-57-131-149-175, 2004-29-53-80, 2005-49-127-245, 2009-186, 2010-123-174, 2012-145
NZ 48	Apr 2000	2000-417-420, 2001-167-195-241, 2003-29-114-131-143-149, 2004-108-109-126, 2006-128-160, 2007-26-53-94-119-124-131-180, 2008-31-240, 2011-25, 2012-66-73
NZ 51	Apr 2001	2003-119, 2004-219, 2005-135, 2007-45, 2008-64
NZ 52	Jul 2004	2005-167, 2006-23, 2008-77-248, 2009-199, 2010-53-205, 2011-115-199-207, 2012-36-46-98
NZ 53	Jun 2012	
NZ 54	Jul 1997	1997-333, 1998-109-122-123-233, 2000-220-338-402, 2002-25-94-135, 2003-142, 2005-95, 2007-83
NZ 55	Apr 1998	2000-176-253, 2002-94, 2004-47-88, 2010-26
NZ 56	Sep 2001	2006-32-79-227, 2007-25
NZ 57	Sep 2001	
NZ 58	Sep 2001	2012-72
NZ 61	Apr 1999	1999-452, 2000-420, 2001-153-195-241-248, 2002-143, 2003-29-120, 2004-89-109-207, 2006-43-161, 2007-53, 2008-100, 2011-25, 2012-53
NZ 62	Apr 1998	1998-255-355, 1999-90-284, 2001-204, 2002-104, 2003-175, 2004-29-53, 2007-178, 2011-246-252
NZ 63	Apr 1998	1998-255-355-402, 1999-90-200-284-302, 2000-275-296-403, 2002-104, 2010-158, 2011-246
NZ 64	Mar 2003	2006-34-53 -145-229-240, 2010-158-196
NZ 66	Jan 2003	2006-34-53-114 -145
NZ 68	Aug 2009	2011-75-90
NZ 69	Aug 2009	2011-75-90
NZ 71	Mar 2002	2005-63-113, 2009 - 210
NZ 72	Mar 2002	2009-210, 2010-146
NZ 73	Mar 2002	
NZ 76	Aug 2009	2010-163
NZ 82 (T 82)	Oct 1993	1994-77-92-182-222-228-298-353, 1995-20-34-35-118-191-214-220-231-236, 1996-278, 1997-97, 1998-409, 1999-327-418, 2000-51, 2002-27, 2005-103, 2007-140, 2011-134
NZ 86	Jun 2010	
NZ 93	Oct 1997	2002-72-73
NZ 222	Jun 2008	2012-151
NZ 223 F	Apr 1999	2000-80-259-268, 2003-132-156, 2005-248, 2008-52-134-249, 2009-218
NZ 224 F	Apr 1999	2006-114-145
NZ 232	Jun 2006	2007-240, 2008-117, 2009-22, 2011-74, 2012-79
NZ 252	Oct 2006	
NZ 268	Oct 1995	1996-165-343, 1997-112-132-396, 1999-137-252, 2001-197, 2002-70, 2004-111
NZ 286	Apr 1992	1994-158-209-321, 2000-21
NZ 443	May 2010	2010-130-195, 2011-24, 2012-66
NZ 463	Mar 2011	2012-23-145-163
NZ 512	Dec 1999	2001-107-214, 2006-66, 2007-45, 2008-64-80-219-229
NZ 521	Oct 2010	2011-115-244, 2012-36-98-162
NZ 522	Apr 2011	2011-207, 2012-37-98
NZ 531	Apr 2011	2011-245
NZ 532	Jun 2012	

NZ 533	Dec 1999	2001-177, 2002-49-78-93, 2003-28, 2004-157, 2005-76-77-189, 2006-126-170-191, 2007-238, 2008-30-42-163-201, 2011-215-251
NZ 534	Dec 1999	1999-471, 2001-237, 2002-135, 2004-70, 2007-83, 2008-78-202, 2010-114
NZ 541	Jan 1998	1998-436, 2000-220-378, 2002-24-25, 2003-142, 2004-171-172, 2005-95, 2011-87-193
NZ 542	Apr 1997	1998-122-123-233, 1999-23, 2000-220-338-378, 2009-73-217, 2011-47-170-193
NZ 561	Oct 2006	2006-228, 2007-93-169, 2009-209, 2010-75
NZ 614	Apr 2009	2011-25-89-107-223, 2012-128
NZ 615	Mar 2011	2011-223-238, 2012-80-145-163
NZ 632	Jun 2000	2000-296-403, 2001-228, 2005-205-246, 2007-106, 2010-41
NZ 661	Jun 2000	2002-128, 2003-101, 2004-23, 2006-145, 2009-92, 2011-151
NZ 681	Aug 2009	2011-75-90-100
NZ 822 (T 822)	Apr 2011	
NZ 827 (T 827)	Oct 1998	1999-327, 2000-51, 2003-177, 2005-103
NZ 845	Apr 2009	
NZ 861	Jun 2010	
NZ 864	Jun 2010	
NZ 865	Jun 2010	2010-185
NZ 885	Apr 2009	2012-885
NZ 945	Oct 1995	2001-84, 2002-71
NZ 955	Oct 1993	1994-209, 1995-284, 1997-397, 2001-85, 2002-73
NZ 1414	Oct 1980	1983-165-174, 1990-87-192, 1991-23, 2001-242
NZ 2225	Jun 2008	
NZ 2325	Jun 2006	2006-144, 2007-70
NZ 2411	Jul 2000	2004-71, 2011-147
NZ 2681	Oct 1995	1997-132
NZ 2862	Apr 1992	1993-37, 1994-158-209
NZ 3111	Jun 2008	
NZ 4111	Jan 2003	
NZ 4212	Apr 2001	2001-226, 2006-216
NZ 4265	Jul 2008	2009-55, 2010-40
NZ 4314	May 2012	2012-127-141
NZ 4315	Aug 2011	2012-99
NZ 4421	Jul 2001	2003-143, 2010-157
NZ 4423	Jul 2001	
NZ 4424	Jul 2001	2001-98, 2004-102
NZ 4432	Jul 2008	2009-32-67, 2010-130-195
NZ 4541	Apr 1995	2001-110, 2003-114-149
NZ 4631	Jan 2000	2003-131-149
NZ 4632	Jul 2000	2003-131
NZ 4633	Jul 2000	2001-165-205, 2002-79-104, 2003-58-67, 2004-158-218, 2005-49-96-127-221-245, 2006-127, 2007-118-198, 2008-220, 2009-75, 2010-174, 2011-88-106-117, 2012-23-156
NZ 4634	Jul 2000	2001-165-194, 2003-58-67, 2004-158-216-218, 2005-89-127-221, 2006-159, 2007-118, 2008-220, 2011-106, 2012-23-156
NZ 5111	Apr 2001	2003-51, 2004-26-87, 2008-64
NZ 5113	Apr 2009	
NZ 5114	Apr 2001	2008-64-219, 2009-180, 2012-35
NZ 5121	Oct 1994	
NZ 5124	Jul 1994	1994-287-314, 1995-240-290-317, 1996-80-144-182-285-291-407, 1997-145-206-214, 1998-108-394, 2000-346-398, 2001-107-214, 2003-153, 2004-56-189, 2005-117-137-175, 2007-33-51, 2008-170, 2009-90, 2010-211, 2011-48
NZ 5125	Jul 1994	1995-30, 1996-80, 1997-20-206, 1998-296-403, 2000-346, 2001-214, 2005-117-118, 2006-66, 2007-45-51-229, 2008-80-170-229, 2009-146, 2011-48-144
NZ 5212	Sep 1999	2003-154, 2005-167
NZ 5214	Mar 2011	2012-162
NZ 5215	Mar 2011	
NZ 5219	May 2012	2012-162
NZ 5221	Mar 2011	2011-116

NZ 5222	Mar 2011	
NZ 5223	Oct 2010	2011-37-145
NZ 5224	Oct 2010	2011-37
NZ 5227	Apr 2008	2009-121-191, 2011-207
NZ 5318	Sep 2001	2002-135, 2004-70, 2005-190, 2006-208, 2008-78-200, 2010-114-115-217
NZ 5321	Apr 2008	2008-155-179-193, 2009-191, 2010-67, 2011-59-214
NZ 5322	Jun 2012	
NZ 5323	Jun 2012	
NZ 5324	Jun 2012	
NZ 5325	Jan 2008	2008-127-164, 2009-192, 2011-23-60-214, 2012-140
NZ 5327	Mar 2005	2005-77, 2006-126, 2007-82-238, 2008-41-42, 2011- 251
NZ 5328	Mar 2005	2006-126, 2007-82-231-238, 2008-41-42
NZ 5411	Jul 2004	2005-78-95, 2007-239, 2009-42-66, 2010-62, 2011-87
NZ 5412	Oct 2004	2005-78-95, 2007-239, 2008-58, 2009-42-66, 2012-90
NZ 5413	Jan 1998	1998-362, 2000-220-425, 2002-24-25, 2003-142-185, 2004-171-172, 2005-95, 2011-87-193
NZ 5423	Jul 2001	2009-217
NZ 5551	Apr 1997	
NZ 5571	Jun 2008	2010-81, 2012-126
NZ 5612	Apr 2011	2012-42
NZ 6142	Jun 2008	2010-140-154-218, 2012-30-47-115
NZ 6144	Apr 2009	2009-228, 2011-107-108
NZ 6151	Sept 2011	2012-80
NZ 6152	Apr 1998	1998-303-334, 1999-120-185-276-452, 2001-62-76, 2002-62, 2004-49-53-173, 2005-146, 2011-89-223
NZ 6153	Mar 2011	2011-238, 2012-145-163
NZ 6154	Mar 2011	2012-145
NZ 6212	May 1999	1999-293, 2000-356, 2002-104, 2003-57, 2004-53-60, 2009-176-186
NZ 6321	Jun 2000	2000-379-403, 2001-154-228, 2002-55-63, 2004-81-174, 2005-178, 2006-33, 2012-54
NZ 6324	Apr 2009	2012-48
NZ 6422	Apr 2009	2011-109
NZ 6433	Apr 2003	
NZ 6612	Jul 2004	2005-102-157, 2008-135, 2009-153, 2011-132-151
NZ 6821	Aug 2009	2010-175, 2012-91
NZ 6825	Mar 2011	2011-133
NZ 6912	Jul 2001	2003-91, 2004 -82
NZ 7132	Mar 2005	
NZ 7142	Oct 1994	1997-263, 2009-111-210. 2010-155
NZ 7621	Aug 2009	2011- 253
NZ 7622	Aug 2009	
NZ 7623	Apr 1999	2005-64, 2006-54
NZ 7624	Aug 2009	2011-38
NZ 7625	Aug 2009	2011-38-146
NZ 7653	Aug 2009	2011-152
NZ 7654	Mar 2002	2002-108, 2005-90, 2006-54-89
NZ 7655	Aug 2009	
NZ 7656	Aug 2009	2011-152
NZ 8215 (T 8215)	Jan 1996	2012-31
NZ 8225 (T 8225)	May 2010	
NZ 8235 (T 8235)	Oct 1993	2004-31, 2010-109
NZ 8238 (T 8238)	Apr 2005	
NZ 8247 (T 8247)	Oct 1993	1994-182-266, 1998 -180-378, 2005-97-129
NZ 8248 (T 8248)	Oct 1993	1994-182-266, 1995-262, 1998-180-378, 2005-97-129
NZ 8259 (T 8259)	Jul 1993	
NZ 8266 (T 8266)	Jul 1993	1993-304, 1994-87-106-346, 1995-181, 1997-298, 1998-409
NZ 8275 (T 8275)	Apr 2010	
NZ 8277 (T 8277)	Apr 2010	

NZ 8645	Jun 2010	
NZ 8655	Jul 2007	2007-232, 2010-185
NZ 8685	Oct 1993	1995-203-224, 1996-30-280, 1997-154-169, 1998-32, 2004-166, 2009-76
NZ 9558	Oct 1992	1994-209, 1995-126-269-357, 2002-72-95, 2003-160, 2007-191
NZ 14051 (INT 51)	Jan 1997	1997-370, 2000-43-44 -92-357-426, 2001-124, 2004-94-135, 2005-140-158-183, 2006-137-151, 2007-171-210
NZ 14052 (INT 52)	Apr 1997	1997 -264-340-377, 1998-134-181-220, 1999-80-219, 2000 -74-102-163-178-244-276-277-357-410-427, 2001-51-57, 2002-58-59-96, 2004-73-93, 2005-28-80-81-158-182-199-201-214-215-251-252, 2006-35-55-60-98-99-116-164-165-166-174-181-221, 2007-36
NZ 14060 (INT 60)	Oct 2008	2009-56, 2012-151
NZ 14061 (INT 61)	Oct 2008	2009-56-161, 2012-151
NZ 14065 (INT 65)	Jan 1997	1997-162-178, 1998 -152-195-392, 1999-137-320-338, 2002-74, 2004-103, 2005-235
NZ 14600 (INT 600)	Jul 2007	2008-52-134-249, 2012-157
NZ 14601 (INT 601)	Jul 2007	2007-209, 2008-52-101-134-249,
NZ 14602 (INT 602)	Jul 2007	
NZ 14604 (INT 604)	Oct 1996	1997-21-144-163-277, 1998-125-220, 1999-81, 2000-94-95-129-190-300-302, 2001-86-168-2002-34-42-56-57-58, 2003-133-150, 2004-40-50-63-67-91-92, 2005-27-37-81-179-180-198-214-223-250, 2006-100-150-164, 2007-36-201
NZ 14605 (INT 605)	Jul 2007	2008-143, 2009-218, 2012-151
NZ 14606 (INT 606)	Jul 2007	2007-233, 2008-88-143, 2009-161
NZ 14607 (INT 607)	Apr 1997	1997-278, 1999-201-213, 2000-65-311-374-380-391, 2001-124-135-169, 2002-113, 2003-128, 2004-64-127-135-142-167-178-179, 2005-148, 2006-131-181, 2009-161
NZ 14612	Apr 1999	
NZ 14613	Apr 1999	2000-154, 2001-135, 2004-74
NZ 14629 (INT 629)	Apr 1997	1998-212, 2000-161, 2001-51, 2002-120, 2005-28
NZ 14630 (INT 630)	Apr 1997	1997-283, 2000-169, 2001-51, 2002-72-73-120
NZ 14631 (INT 631)	Apr 1997	1997-283, 1998-132-234, 1999-327, 2000-74-175, 2001-51, 2002-27-120, 2004-41, 2005-28, 2007-140, 2008-143, 2009-218
NZ 14638 (INT 638)	Oct 1996	1997-196, 1998 -132-234-290-316-317, 1999-81-327-367, 2000-22-23-129-320,2002-34, 2003-127-156, 2004-41, 2005-223, 2007-47, 2008-143, 2009-218, 2010-27-213, 2012-38
NZ 14900 (INT 900)	Apr 1998	2002-74, 2003-126, 2012-92
NZ 14901 (INT 9001)	Jul 2007	
NZ 14902 (INT 9002)	Jul 2007	
NZ 14903 (INT 9003)	Aug 2008	
NZ 14906 (INT 9006)	Aug 2006	
NZ 14907 (INT 9007)	Aug 2006	
NZ 14908 (INT 9008)	Aug 2006	
NZ 14909 (INT 909)	Jun 2004	2011-233
NZ 14912 (INT 9012)	Aug 2006	