

NEW ZEALAND NOTICES TO MARINERS

Notices

NZ 240 – 246

© Crown Copyright 2014. All rights Reserved. Permission is not required to make analogue copies of these Notices but such copies are not to be sold.

CONTENTS

- I [Explanatory Notes.](#)
 - II [New Zealand Notices to Mariners.](#)
 - III [Corrections to New Zealand Light List.](#)
 - IV [Corrections to Sailing Directions and New Zealand Publications.](#)
 - V [Navigational Warnings.](#)
 - VI [Corrections to Admiralty List of Radio Signals.](#)
-

New Zealand Notices to Mariners are the authority for correcting New Zealand charts within the New Zealand area of charting responsibility as shown in [Annual Notice No. 1](#).

Mariners are requested to immediately inform New Zealand Hydrographic Authority, Land Information New Zealand, 155 The Terrace, PO Box 5501, Wellington 6145, New Zealand, Phone: 0800 665 463 or +64 (0)4 460 0110, Fax: +64 (0)4 460 0161, email: ntm@linz.govt.nz, of the discovery of new or suspected dangers to navigation, or shortcomings in charts and publications. A copy of a Hydrographic Note, a convenient form on which to send such information, is included at the end of Section VI of the Fortnightly Notices to Mariners.

Changes or defects in aids to navigation should be reported to the Rescue Coordination Centre New Zealand (RCCNZ) via the nearest New Zealand Coastal Maritime Radio Station Phone: +64 (0)4 577 8030, Fax: +64 (0)4 577 8038 or +64 (0)4 577 8041, email: rccnz@maritimenz.govt.nz.

Copies of these Notices can be obtained from Land Information New Zealand, Maritime New Zealand, Principal Chart Agents at the major ports of New Zealand and the Internet: www.linz.govt.nz.

EXPLANATORY NOTES

Charts. The notices in Section II give instructions for the correction of charts. Geographical positions refer to the largest scale chart unless otherwise stated. They are normally given in degrees, minutes and decimals of a minute, but may occasionally quote seconds for convenience when plotting from the graduation of some older-style charts. Bearings are true reckoned clockwise from 000° to 359°; those relating to lights are given as seen by an observer from seaward. Symbols referred to are those shown in publication Chart 5011 (*INT 1*) Symbols and Abbreviations used on Admiralty Paper Charts, published by the United Kingdom Hydrographic Office.

Alterations to depth contours, deletion of depths to make way for new detail, etc. are not mentioned unless they have some navigational significance.

Block corrections or notes accompanying notices in Section II are placed after Section VI.

Temporary and Preliminary Notices. These are indicated by (T) or (P) after the notice number. A list of [\(T\) and \(P\) Notices in force](#) is published on the LINZ website and in the fortnightly Editions of Notices to Mariners. Charts are not corrected for them before issue; they should be corrected in pencil on receipt.

Light Lists. The detailed correction to the Light List is given in Section III and may not be published in the same edition as the chart correcting notice. The entire entry for each light is printed, and an asterisk (*) is shown under the column which contains an amendment. In the case of a new light, an asterisk (*) appears under all the columns. New and extensively altered entries are intended to be pasted in. It is recommended that a manuscript entry be made for all shorter corrections.

It is emphasized that the [List of Lights](#) is the authority for lights and that many alterations, especially those of a temporary but operational nature, may only be promulgated as corrections to the List of Lights.

Sailing Directions. Corrections to Sailing Directions are given in Section IV. It is recommended that such corrections be kept together in a file with the latest list of those in force on top. The file can then be consulted when using the Current Edition of the book to see if any notices affecting the area under consideration are extant. Corrections should not be pasted into the Current Edition of the book or Supplement.

New Zealand Publications. Corrections to New Zealand Publications are given in Section IV.

Navigational Warnings. NAVAREA XIV and NZ Coastal Navigational Warnings that are in force at the time of publication are given in Section V.

Radio Signals. When radio signals are affected by a notice the Admiralty List of Radio Signals reference number is quoted. The detailed correction to the List of Radio Signals is given in Section VI and may be published in a later edition than the chart correcting notice. It is recommended that such corrections be kept together in a file with the latest list of those in force on top. Corrections should not be pasted into the Current Edition of the book.

Correction of Charts and Publications by the User. New Zealand Notices to Mariners contain important information and should be used to keep the specified charts and books up to date.

THE USE OF CHARTS AND ASSOCIATED PUBLICATIONS

Reliance on Charts and Associated Publications. While every effort is made to ensure the accuracy of the information on New Zealand charts and other publications, it should be appreciated that it may not always be complete and up to date. The mariner must be the final judge of the reliance to be placed on the information given, bearing in mind their particular circumstances, local pilotage guidance and the judicious use of available navigational aids.

Charts. Charts should be used with prudence: there are areas where the source data are old, incomplete or of poor quality. The mariner should use the largest scale appropriate for his particular purpose; apart from being the most detailed, the larger scales are usually corrected first. When extensive new information (such as a new hydrographic survey) is received, some months may elapse before it can be fully incorporated in published charts. On small scale charts of ocean areas where hydrographic information is, in many cases, still sparse, charted shoals may be in error as regards position, least depth and extent. Undiscovered dangers may exist, particularly away from well-established routes.

Further guidance. The Mariner's Handbook (NP 100) gives a fuller explanation of the limitations of charts. All users should study it in their own interest.

ENC/ECDIS Data Presentation and Performance Check in Ships. The International Maritime Organization (IMO) has recently indicated its concerns about operating anomalies identified in some ECDIS that fail to display important new chart features.

The International Hydrographic Organization (IHO) has produced an ENC Data Presentation and Performance Check dataset that allows mariners to check their ECDIS. The check dataset is available through ENC service providers and from the IHO website (www.iho.int) which includes instructions.

Mariners are strongly recommended to use the dataset and report the results of their checks to help the IHO identify how the different brands of ECDIS display and handle chart information. Mariners are asked to also inform the IMO, national Hydrographic Offices, ECDIS manufacturers and others, so that they can take any corrective action that may be necessary.

In order to present the most comprehensive report possible to the IMO and to further assist in resolving the issues so far identified, the IHO is keen that as many ships as possible forward their results. Reports on the results can be sent via a form provided with the data or the results can be submitted on-line through a web-form.

All relevant documentation can be downloaded free from the IHO website at: www.iho.int.

II

NUMERICAL INDEX OF CHARTS AFFECTED
(NZ NTM Edition No. 23 dated 14 November 2014)

NZ Chart No.	INT Chart No.	ENC No.	Notice to Mariners
NZ 61			246(T)
NZ 531		NZ300531	245(P)
NZ 534			245(P)
NZ 614		NZ300614	246(T)
NZ 5113			243(P)
NZ 5315			244(P)
NZ 5318			245(P)
NZ 5321			242
NZ 6144		NZ406144	246(T)

II

NEW ZEALAND TEMPORARY AND PRELIMINARY NOTICES IN FORCE

(NZ NTM Edition No. 23 dated 14 November 2014)

NZ Notice	T/P	Charts Affected	Locality and Subject
		NZ Chart, ENC Cell	
194/04	P	NZ 46, NZ 48, NZ 61, NZ 463, NZ 614, NZ 6151, NZ 6152, NZ 6153, NZ 6154	Marlborough Sounds: Use of Automated Navigation Systems
131/08	T	NZ 68, NZ 69, NZ 681	Foveaux Strait, Ruapuke Is.: Seabed Obstruction
242/09	P	NZ 42, NZ 4265	Kaipara Hr. Entrance: Depths
222/10	P	NZ 542	Whakatane: Depths
20/11	P	NZ 5411, NZ5412, NZ405411, NZ505412	Tauranga Hr.: Lights
202/11	P	NZ 6142, NZ606142	Port Nelson: Light, Beacon, Works in Progress
247/11	T	NZ 54, NZ 541, NZ 542, NZ 5413, NZ300541, NZ405413	East Coast, Bay of Plenty: Waverider Buoy
211/12	P	NZ 61, NZ 614, NZ300061, NZ300614, NZ506141	North Coast, Golden Bay & Tasman Bay: Lights
28/13	P	NZ 4633, NZ 4634, NZ404633, NZ546341	South Coast, Wellington Harbour: Light Sectors
71/13	P	NZ 8655, NZ508655	Samoa, Apia Harbour: Buoys
85/13	P	NZ 541, NZ 5411, NZ 5412, NZ 5413, NZ300541, NZ405411, NZ505412	East Coast, Tauranga, Port of Tauranga: Works
89/13	T	NZ 45, NZ 48, NZ300045	West Coast, South Taranaki Bight: Waverider Buoy
140/13	P	NZ 5314	East Coast, Mercury Islands, Rocky Bay, Coralie Bay, Orauaki Point, Te Whanga Bay, Korapuki Islands: Rocks
147/13	P	NZ 521, NZ300521	East Coast, Poor Knights Islands: Depths
156/13	P	NZ 541, NZ 5413, NZ300541, NZ405413	East Coast, Tauranga, Motiti Island: Depths
169/13	P	NZ 5411, NZ405411	East Coast, Tauranga Harbour, Katikati Entrance: Buoy
170/13	T	NZ 54, NZ 541, NZ 542, NZ 5413, NZ300541, NZ405413	East Coast, Tauranga, Astrolabe Reef: Exclusion Zone
172/13	P	NZ 6152	North Coast, Havelock: Lights, Beacons
180/13	T	NZ 845, NZ 14630 (INT 630), NZ 14631 (INT 631), NZ214631, NZ300845	Nuie, Alofi Bay: Lights
194/13	P	NZ 5124	East Coast, Bay of Islands, Kerikeri Inlet: Light Beacons
219/13	P	NZ 4633, NZ 4634, NZ404633, NZ546343	Wellington Harbour, Point Howard: Wharf Developments
220/13	T	NZ 5612, NZ505612, NZ605612	East Coast, Napier Inner Harbour and Approaches: Dredging
221/13	P	NZ 4265	West Coast, Kaipara Harbour: Lights, Beacons, Buoys
242/13	T	NZ 53, NZ 532, NZ 5321, NZ 5324, NZ305322, NZ405321	East Coast, Auckland, Rakino Island: Light Unlit
265/13	T	NZ 4633, NZ 4634, NZ404633, NZ546342	South Coast, Wellington Harbour, Thorndon Container Terminal: Reclamation
270/13	T	NZ 4633, NZ 4634, NZ404633, NZ546341, NZ546342	South Coast, Wellington, Evans Bay, Lyall Bay: Restricted Areas
41/14	P	NZ 268	Chatham Islands: Depths and Rocks
42/14	P	NZ 26, NZ 27, NZ 268	Chatham Islands: Areas to be avoided
45/14	P	NZ 632, NZ 6324, NZ406324	East Coast, Akaroa Harbour: Area of Restricted Access
72/14	T	NZ 66, NZ 661, NZ300661	East Coast, Approaches to Otago Harbour: Scientific Instruments
94/14	T	NZ 6142, NZ406142, NZ606142	North Coast, Nelson: Light, Beacon
130/14	T	NZ 63, NZ 632, NZ 6321, NZ300063, NZ400632, NZ506321	East Coast, Lyttelton Harbour: Channel Depth
132/14	T	NZ 6321, NZ506321, NZ606321	East Coast, Lyttelton Harbour: Light, Beacon
138/14	T	NZ 23 (INT 640), NZ 26, NZ 55, NZ 56, NZ 14600 (INT 600), NZ200023, NZ300055, NZ300056, NZ14600E	East Coast, Poverty Bay, Eastwards: Scientific Instruments
139/14	P	NZ 5612	East Coast, Approaches to Napier: Light Sectors
140/14	T	NZ 23 (INT 640), NZ 26, NZ 58, NZ 14600 (INT 600), NZ200023, NZ300058, NZ14600E	East Coast, Honeycomb Southeastwards: Scientific Instruments
141/14	T	NZ 23 (INT 640), NZ 25 (INT 648), NZ 45, NZ 48, NZ200023, NZ300045	West Coast, South Taranaki Bight: Seabed Obstructions
156/14	P	NZ 82 (T 82), NZ 8238 (T 8238), NZ 8247 (T 8247), NZ 8248 (T 8248), NZ8259 (T 8259), NZ300082, NZ508238, NZ608238	Kingdom of Tonga, Ha'apai Group: Navigation Aids
171/14	P	NZ 521, NZ300521	East Coast, Whangarei Harbour: Directional light
185/14	T	NZ 5324, NZ 5325, NZ405324, NZ505325	East Coast, Auckland, Tamaki River: Panmure Bridge Vertical Clearance
193/14	T	NZ 46, NZ 463, NZ 4633, NZ 4634, NZ300463, NZ404633, NZ546341	South Coast, Pencarrow Head: Light
196/14	T	NZ 5571, NZ405571, NZ505571	East Coast, Poverty Bay, Gisborne: Scientific

II

NZ Notice	T/P	Charts Affected	Locality and Subject
		NZ Chart, ENC Cell	
197/14	T	NZ 23 (INT 640), NZ 25 (INT 648), NZ 45, NZ 48, NZ 443, NZ200023, NZ300443	Instruments West Coast, Cape Egmont Westwards: Drilling Operations.
198/14	T	NZ 865, NZ 8655, NZ400865, NZ508655	Samoa, Upolu, Apia Harbour: Exclusion Zone
205/14	P	NZ 5215, NZ505215	East Coast, Whangarei Harbour, Hatea River, Waiharohia Creek: Complete
206/14	T	NZ 5321, NZ 5322, NZ405321, NZ505322	East Coast, Auckland Harbour, Takapuna Beach: Research Buoy
207/14	T	NZ 561, NZ 5612, NZ400561, NZ505612	East Coast, Whirinaki Eastwards: Buoy
210/14	P	NZ 8215, NZ508215	Kingdom of Tonga, Niuaotuputu: Navigation Aids
211/14	P	NZ 82 (T 82), NZ 827 (T 827), NZ 8275 (T 8275), NZ 8277 (T 8277), NZ300827, NZ408275, NZ508277	Kingdom of Tonga, Tongatapu: Navigation Aids
212/14	T	NZ 4214, NZ404314	West Coast, Manukau Harbour: Depths
213/14	T	NZ 8655, NZ508655	Samoa, Approaches to Apia Harbour: Buoys
216/14	T	NZ 23 (INT 640), NZ 25 (INT 648), NZ 45, NZ 48, NZ200023, NZ300045	West Coast, South Taranaki Bight: Drilling Operations
217/14	T	NZ 7142, NZ407142, NZ507142	West Coast, Greymouth Harbour: Depths
218/14	T	NZ 4315, NZ504315, NZ604315	West Coast, Onehunga Wharf: Berth Depths
224/14	P	NZ 6422, NZ406422, NZ506422	East Coast; Timaru Harbour: Works, Exclusion Zone and Buoy
229/14	T	NZ 21 (INT 641), NZ 23 (INT 640), NZ 25 (INT 648), NZ 43, NZ 48, NZ 443, NZ 4432, NZ200023, NZ300443, NZ404432, NZ504432	West Coast, Port Taranaki: Light Temporarily Extinguished
232/14	T		Maritime Safety Broadcasts
233/14	T	NZ 463, NZ 4633, NZ 4634, NZ300463, NZ404633, NZ546342	South Coast, Wellington Harbour: Scientific Instruments
234/14	T	NZ 21 (INT 641), NZ 23 (INT 640), NZ 41, NZ 42, NZ 43, NZ 443, NZ 4111, NZ 14061 (INT 61), NZ 14600 (INT 600), NZ 14601 (INT 601), NZ 14602 (INT 602), NZ 14605 (INT 605), NZ14600E, NZ200021, NZ300023, NZ300041, NZ300042, NZ300043, NZ300443	West Coast, Seismic Survey
235/14	T	NZ 6422, NZ406422, NZ506422	East Coast, Timaru Harbour: Light
236/14	T	NZ 14638 (INT 638)	Fiji, Vitu Levu, Vanua Levu & Southern Lau Group: Lights
237/14	P	NZ 82 (T 82), NZ 822 (T 822), NZ 8225 (T 8225), NZ300082, NZ400822, NZ508225	Kingdom of Tonga, Vava'u Group: Navigation Aids
238/14	P	NZ 822 (T 822), NZ 8225 (T 8225), NZ400822, NZ508225	Kingdom of Tonga, Vava'u Group, Neiafu Harbour: Prohibited Area
239/14	T	NZ 521, NZ5215, NZ300521, NZ505215	East Coast, Whangarei Harbour: Works
243/14	P	NZ 5113	East Coast, Houhora & Rangaunu Harbour: Aids to Navigation
244/14	P	NZ 5315	East Coast, Mercury Bay: Depths, Rocks
245/14	P	NZ 531, NZ 534, NZ 5318, NZ300531	East Coast, Mercury Islands, Mercury Bay: Depths, Rocks
246/14	T	NZ 61, NZ 614, NZ 6144, NZ300614, NZ406144	North Coast, Tasman Bay and Golden Bay: Spat Catching Areas

NZ 240/14 NEW ZEALAND PUBLICATIONS – Raster Navigational Charts (RNCs).

From 14 November 2014, the *NZMariner* BSB cumulative update file for October 2014 will be available from the LINZ website www.linz.govt.nz/hydro/nzmariner.

NZMariner Raster Navigational Charts (RNCs) can be used only in conjunction with compatible viewing software called Electronic Charting Systems (ECS).

For compliance with New Zealand legal requirements for nautical charts and publications please refer to Maritime Rules Part 25, as supported by Maritime New Zealand Marine Guidance Notice 8 'Use of Electronic Charts, ECDIS and ENC's in New Zealand' available from the Maritime New Zealand website www.maritimenz.govt.nz/Commercial/Shipping-safety/Safety-updates/Guidance-notices.asp.

Further details are included in the Annual New Zealand Notices to Mariners, No.1 which can be found in the New Zealand Nautical Almanac (NZ 204) and on the LINZ website www.linz.govt.nz.

New Zealand Hydrographic Authority
NI 267/2014

NZ 241/14 BRITISH ADMIRALTY PUBLICATIONS – New Edition Published.

<i>NP No.</i>	<i>Title</i>	<i>Date</i>	<i>Remarks</i>
NP284	Admiralty List of Radio Signals. Meteorological Observation Stations.	06/11/14	Updated to BA Week 32/14 (07/08/14). First updates in BA Week 45/14. The 2013/14 Edition of NP284 is cancelled.

UKHO Weekly Edition 45/14
NI 271/2014

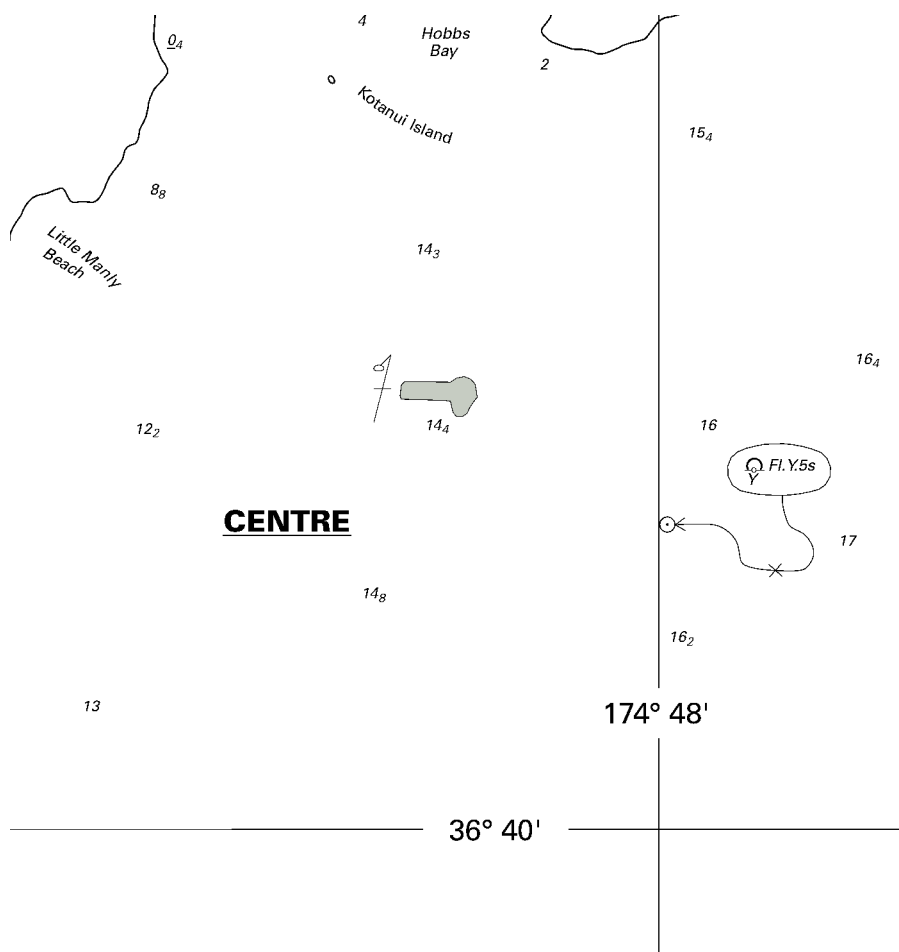
NZ 242/14 NEW ZEALAND – North Island – East Coast – Whangaparaoa Peninsula – Light Buoy.

Chart NZ 5321 [169/14]

Insert  Fl.Y.5s 36° 39'.13S., 174° 48'.03E.
Y

Delete  Fl.Y.5s 36° 38'.76S., 174° 47'.30E.
Y

Auckland Council
NI 268/2014



<i>Issued as a guide to chart correction.</i>		<i>Use in conjunction with the appropriate NZ Notice to Mariners.</i>	
LAST CORRECTION	NZ NTM No.	CHART No.	
NZ 169/14	NZ 242/14	NZ 5321	

NZ 243(P)/14 NEW ZEALAND – North Island – East Coast – Houhora Harbour and Rangaunu Harbour – Aids to Navigation.

1. The following aids to navigation have been established in Houhora Harbour:

<i>Name</i>	<i>Position</i>	<i>Characteristic</i>	<i>Type</i>
HH5	34° 48'.95S., 173° 07'.28E.	Q.G.3m2M	Starboard lateral mark, green cone topmark
Ripiri	34° 49'.26S., 173° 08'.75E.	Q.R.1m2M	Port lateral buoy

2. The following aids to navigation have been removed from Houhora Harbour:

<i>Name</i>	<i>Position</i>	<i>Characteristic</i>	<i>Type</i>
Ripiripi, P2-	34° 49'.26S., 173° 08'.75E.	Q.R.3m1M	Port lateral mark, red can topmark
S1	34° 49'.27S., 173° 08'.60E.	Q.G.3m1M	Starboard lateral mark, green cone topmark
S4	34° 49'.41S., 173° 08'.26E.	Q.G.3m1M	Starboard lateral mark, green cone topmark
-	34° 49'.23S., 173° 07'.74E.	unlit	Starboard lateral mark, green cone topmark

3. The following lit beacons have been established in Rangaunu Harbour:

<i>Name</i>	<i>Position</i>	<i>Characteristic</i>	<i>Type</i>
AC2	34° 56'.26S., 173° 16'.98E.	Fl.R.3s3m2M	Port lateral mark, red can topmark
AC4	34° 57'.42S., 173° 15'.64E.	Fl.R.3s3m2M	Port lateral mark, red can topmark
Home Creek	34° 57'.90S., 173° 15'.23E.	Fl.G.2.5s3m2M	Starboard lateral mark, green cone topmark
J6	34° 59'.35S., 173° 14'.96E.	Q.R.3m2M	Port lateral mark, red can topmark

4. The following aids to navigation have been removed from Rangaunu Harbour:

<i>Name</i>	<i>Position</i>	<i>Characteristic</i>	<i>Type</i>
-	34° 54'.37S., 173° 18'.37E.	unlit	Port lateral mark, red can topmark
A2	34° 56'.25S., 173° 16'.99E.	Fl.R.3s2M	Port lateral buoy
A4	34° 57'.42S., 173° 15'.64E.	Fl.R.3s2M	Port lateral buoy
Home Creek	34° 57'.89S., 173° 15'.26E.	Fl.G.2.5s2M	Starboard lateral buoy
Junction	34° 59'.35S., 173° 14'.95E.	Q.R.2M	Starboard lateral buoy

5. Charting action will take place in due course.

Chart affected: NZ 5113

Northland Regional Council

NZ Light List: 3690.89, 3691.45, 3691.52, 3691.55, 3691.595, 3690.72, 3690.74, 3690.78

NI 266/2014

NZ 244(P)/14 NEW ZEALAND – North Island – East Coast – Mercury Bay – Cooks Bluff to Te Karaka Island – Depths, Rocks.

1. Numerous depths less than charted exist between Cooks Bluff to Te Karaka Island. The most significant are:

<i>Position</i>	<i>Depth</i>	<i>Feature</i>
Cooks Bluff eastwards		
36° 49'.23S., 175° 46'.66E.	3.8	Underwater rocky ledge
36° 49'.28S., 175° 46'.78E.	1.7	Underwater rock
36° 49'.30S., 175° 46'.86E.	-1.9	Rock, covers and uncovers
Motueka Island (Pigeon Island)		
36° 49'.34S., 175° 47'.99E.	-0.5	Rock, covers and uncovers
Cathedral Cove eastwards		
36° 49'.72S., 175° 47'.85E.	2.9	
36° 49'.67S., 175° 47'.97E.	2.8	
36° 49'.76S., 175° 48'.00E.	4.1	
Mahurangi Island (Goat Island)		
36° 49'.77S., 175° 49'.27E.	3.0	
Wigmore Pass northwards		
36° 50'.16S., 175° 48'.88E.	0.3	Rock
36° 50'.12S., 175° 49'.00E.	3.2	
36° 50'.15S., 175° 49'.04E.	2.5	
36° 50'.13S., 175° 49'.17E.	0.3	Rock
36° 50'.23S., 175° 48'.97E.	-1.8	Rock, covers and uncovers
36° 50'.30S., 175° 48'.86E.	-1.3	Rock, covers and uncovers
36° 50'.36S., 175° 49'.10E.	-1.5	Rock, covers and uncovers
36° 50'.27S., 175° 49'.27E.	4.6	
36° 50'.09S., 175° 49'.24E.	6.4	

2. Charting action will take place in due course.

Chart affected: NZ 5315
New Zealand Hydrographic Authority
NI 269/2014

NZ 245(P)/14 NEW ZEALAND – North Island – East Coast – Mercury Islands and Mercury Bay – Depths, Rocks.

Former notice – NZ 172(P)/14 is cancelled.

1. Numerous depths less than charted exist within the vicinity of Mercury Islands and Mercury Bay. The most significant are:

<i>Position</i>	<i>Depth</i>	<i>Feature</i>
Great Mercury Island (Ahuahu)		
36° 34'.48S., 175° 45'.11E.	14.3	
36° 36'.82S., 175° 47'.18E.	-0.8	Rock, covers and uncovers
36° 37'.38S., 175° 47'.19E.	-0.5	Rock, covers and uncovers
Kawhiti or Stanley Island, Atiu or Middle Island, Green Island & Korapuki Island		
36° 38'.39S., 175° 50'.70E.	7.6	Underwater rock
36° 38'.07S., 175° 52'.42E.	6.7	
36° 37'.92S., 175° 53'.65E.	8.3	
Double Island (Moturehu) & Red Mercury Island (Whakau)		
36° 36'.96S., 175° 53'.80E.	14.5	
36° 35'.87S., 175° 56'.22E.	22.5	
36° 37'.06S., 175° 56'.61E.	10.4	
36° 39'.05S., 175° 58'.62E.	16.4	
Kuaotunu Beach		
36° 42'.67S., 175° 43'.62E.	Always dry	Islet
36° 42'.70S., 175° 43'.79E.	-2.1	Rock, covers and uncovers
Black Rocks, Flat Island & Whale Rock		
36° 41'.32S., 175° 51'.81E.	5.0	
36° 42'.16S., 175° 52'.15E.	2.6	
36° 42'.54S., 175° 52'.86E.	9.7	
36° 41'.91S., 175° 55'.02E.	8.8	
36° 41'.79S., 175° 55'.48E.	4.6	
Opito Bay		
36° 41'.66S., 175° 47'.96E.	5.5	
36° 41'.86S., 175° 47'.91E.	4.9	Underwater rock
Red Bay		
36° 43'.27S., 175° 49'.44E.	1.5	
36° 44'.15S., 175° 49'.71E.	4.3	
The Twins (Motumanga)		
36° 45'.73S., 175° 48'.19E.	7.3	

(continued)

NZ 245(P)/14 NEW ZEALAND – North Island – East Coast – Mercury Islands and Mercury Bay – Depths, Rocks.
(continued)

Motukorure Island

36° 47'.96S., 175° 46'.57E. 4.7 Underwater rock

Wharekaho Beach

36° 48'.31S., 175° 43'.64E. 4.7 Underwater rock

Buffalo Bay

36° 48'.89S., 175° 42'.96E. 2.3 Breaks

36° 49'.06S., 175° 43'.05E. 2.9 Breaks

Shakespeare Cliff Northwestwards

36° 49'.54S., 175° 43'.47E. 2.4 Underwater rock

Wigmore Pass

36° 50'.29S., 175° 49'.39E. -1.8 Rock, covers and uncovers

* 36° 50'.30S., 175° 48'.86E. -1.3 Rock, covers and uncovers

* 36° 50'.15S., 175° 49'.04E. 2.5 Underwater rock

* 36° 50'.09S., 175° 49'.24E. 6.4

* **Te Pupuha Point Southwards**

* 36° 51'.45S., 175° 49'.55E. 2.9 Underwater rock

* 36° 51'.60S., 175° 49'.67E. 8.9

* **Motueka Island (Pigeon Island) Southwards**

* 36° 49'.68S., 175° 47'.97E. 2.8 Underwater rock

* 36° 49'.44S., 175° 47'.94E. Always dry Islet

* **Cook Bluff Eastwards**

* 36° 49'.29S., 175° 46'.66E. 0.5 Underwater rock

* 36° 49'.23S., 175° 46'.66E. 3.8

2. Charting action will be taken in due course.

* *Indicates new or revised entry.*

Charts affected: NZ 531, NZ 534, NZ 5318, NZ300531

New Zealand Hydrographic Authority
NI 272/2014

**NZ 246(T)/14 NEW ZEALAND – South Island – North Coast – Tasman Bay and Golden Bay – Spat
Catching Areas.**

1. Seasonal spat catching areas have been established in Tasman Bay and Golden Bay until April 2015. The perimeter corners are identified by cardinal marks at the following positions:

Tasman Bay	41° 03'.32S., 173° 07'.21E.
	41° 04'.55S., 173° 08'.24E.
	41° 05'.60S., 173° 05'.91E.
	41° 04'.38S., 173° 04'.89E.

Golden Bay	40° 45'.11S., 172° 50'.88E.
	40° 46'.03S., 172° 52'.88E.
	40° 47'.61S., 172° 51'.33E.
	40° 46'.66S., 172° 49'.33E.

2. Mariners are requested to exercise caution when navigating in the area.

Charts temporarily affected: NZ 61, NZ 614, NZ 6144, NZ300614, NZ406144

Tasman Bay Ring Road Spat Catching Ltd & Golden Bay Ring Road Spat Catching Ltd
NI 273/2014

III

CORRECTIONS TO NEW ZEALAND LIGHT LIST
(NZ NTM Edition No. 23 dated 14 November 2014)

NEW ZEALAND NAUTICAL ALMANAC 2014/15
LIGHT LIST SECTION

3690.7	- HH2	34 49.54 173 09.36	Q R	3	1	Red □ on beacon	
	*	*					
3690.72	Remove from list						
3690.74	Remove from list						
3690.76	- HH1	34 49.33 173 08.53	Q G	3	1	Green △ on beacon	
	*	*					
3690.77	- HH3	34 49.38 173 08.43	Q G	3	1	Green △ on wooden pile	
	*	*					
3690.78	Remove from list						
3690.8	- HH4	34 49.48 173 08.23	Q R	5	2	Red □ on wooden pile	
	*	*					
3690.85	- HH6	34 49.20 173 07.57	Q R	3	2	Red □ on wooden pile	
	*	*					
3690.89	- HH5	34 48.95 173 07.28	Q G	3	2	Green △ on wooden pile	<i>fl 0.3, ec 0.7</i>
	*	*				3	*
3690.9	- Pukenui Wharf. Head SE corner	34 48.85 173 07.16	2 F R(vert)			On end of wharf	
	*	*				*	
3691.45	- AC2	34 56.26 173 16.98	Fl R 3s	3	2	Red □ on wooden pile	<i>fl 0.3, ec 2.7</i>
	*	*				3	*
3691.52	- AC4	34 57.42 173 15.64	Fl R 3s	3	2	Red □ on wooden pile	<i>fl 0.3, ec 2.7</i>
	*	*				3	*
3691.55	- Home Creek	34 57.90 173 15.23	Fl G 2.5s	3	2	Green △ on wooden pile	<i>fl 0.3, ec 2.2</i>
	*	*				3	*
3691.595	- -J6	34 59.35 173 14.96	Q R	3	2	Red □ on wooden pile	<i>fl 0.3, ec 0.7</i>
	*	*				3	*

(NI 266/2014)

IV

CORRECTIONS TO SAILING DIRECTIONS AND NEW ZEALAND PUBLICATIONS

(NZ NTM Edition No. 23 dated 14 November 2014)

NP13 Australia Pilot Volume 1 (2014 Edition)

Western Australia – Port Hedland — Outer anchorages

221

Paragraph 5.326 *Replace by:*

Outer anchorages

5.236

1 **Anchorage** may be obtained in the following areas, containing designated berths as charted; the bottom is sandy and the holding ground is reported to be good:

<i>Anchorage Nos</i>	<i>Position</i>	<i>Approximate depth</i>
A1 to A14	Area W of main approach channel, centred on position 20°09'·12S 118°26'·80E	10·0 m to 16·0 m
B1 to B15	Area between main approach channel and eastern approach channel, centred on position 20°06'·50S 118°31'·50E	11·0 m to 16·0 m
F1 to F2	Close S of B14 and B15 anchorages, centred on position 20°09'·20S 118°31'·80E	14·5 m to 15·0 m
D1 to D9	Area E of the eastern approach channel, centred on position 20°05'·90S 118°34'·30E	14·9 m to 16·6 m
G1 to G14	Area E of the eastern approach channel, centred on position 20°05'·70S 118°36'·30E	14·6 m to 17·1 m
H1 to H6	Area E of the eastern approach channel, centred on position 20°05'·70S 118°37'·90E	12·1 m to 14·5 m

Australian Chart 53
(SDD 2014000 222435)

[46/14]

V

NAVIGATIONAL WARNINGS

Warnings in force 12 November 2014

NAVAREA XIV

(South West Pacific)

- 85/14 FM NAVAREA XIV COORDINATOR 292300 UTC OCT 14
NAVAREA XIV 85/14
PACIFIC OCEAN
MELANESIAN BASIN
1. UNDERWATER OPERATIONS BY R/V MIRAI BETWEEN 04 NOV
AND 18 DEC 14 IN AREA BOUNDED BY:
A.10-40N 165-00E
B.10-00S 165-00E
C.10-00S 150-00E
D.10-00N 150-00E
2. CANCEL THIS MESSAGE 190001 UTC DEC 14

NZ Coastal Navigational Warnings

(Area Z)

- 218/14 FM: RCC NEW ZEALAND 112100 UTC NOV 14
COASTAL NAVIGATION WARNING 218/14
AREA COLVILLE
CUVIER ISLAND, BAY OF PLENTY
1. LIVE FIRING 161900 UTC TO 170900 UTC NOV 14 AND 171900 UTC TO 180900 UTC NOV
14 IN DANGER AREA NZM204. ANNUAL NEW ZEALAND NOTICES TO MARINERS NUMBER
5 REFERS.
2. CANCEL THIS MESSAGE 181000 UTC NOV 14.
-

VI

CORRECTIONS TO ADMIRALTY LIST OF RADIO SIGNALS

(NZ NTM Edition No. 23 dated 14 November 2014)

Nil

HYDROGRAPHIC NOTE

(For instructions, see next page)

New Zealand Hydrographic Authority
Land Information New Zealand
Radio New Zealand House
155 The Terrace
PO Box 5501
Wellington 6145
New Zealand

Tel: 0800 665 463 or +64 (0)4 460 0110

Fax: +64 (0)4 460 0161

Email: ntm@linz.govt.nz

Date Ref. No.

Name and address of ship or sender

.....
.....

Tel/Fax/Telex/Email of sender

General locality

Subject

Position. Lat. Long.

Position fixing system used

Datum

Paper Chart/ENC affected Edition

Dated

Latest Notice to Mariners held

Publications affected (Edition No. and date of latest supplement, page no., ID no. etc)

Details:

A replacement copy of Chart No.
is required (see Instruction 4).

Signature of observer/reporter

HYDROGRAPHIC NOTE

Forwarding Information for Charts and Hydrographic Publications

Note: An acknowledgement of receipt will be sent and the information then used to the best advantage, which may mean immediate action or inclusion in a revision in due course. When a Notices to Mariners is issued, the sender's ship or name is quoted as authority unless (as sometimes happens) the information is also received in a foreign Notices to Mariners. An explanation of the use of contributions from all parts of the world would be too greater task and a further communication should only be expected when the information is of outstanding value or has unusual features.

INSTRUCTIONS:

1. Mariners are requested to notify New Zealand Hydrographic Authority, Land Information New Zealand, 155 The Terrace, PO Box 5501, Wellington 6145, New Zealand, when new or suspected dangers to navigation are discovered, changes observed in aids to navigation, or corrections to publications seem to be necessary. The Admiralty publication, *The Mariner's Handbook* (NP 100), Chapter 4, gives general instructions.
2. This form and its instructions have been designed to help both the sender and the recipient. It should be used, or followed, closely, whenever appropriate. Copies of this form may be obtained gratis from the New Zealand Hydrographic Authority at the address above, or in PDF format directly from the LINZ website, www.linz.govt.nz/hydro. Hydrographic Notes can also be sent from mobile devices using the Hydrographic Notes Application available for [Android](#) and [Apple](#) devices.
3. When a position is defined by sextant angles or bearings (true or magnetic being specified) more than two should be used in order to provide a check. Distances observed by radar should be quoted. However, when there is a series of fixes along a ship's course, only the method of fixing and the objects used need to be indicated. Latitude and longitude should only be used specifically to position the details when they have been fixed by astronomical observations or GPS and a full description of the method, equipment and datum used should be given.
4. Paper Charts: A cutting from the largest scale paper chart is the best medium for forwarding details, the alterations and additions being shown thereon in red. When requested, a new copy will be sent in replacement of a chart that has been used to forward information, or when extensive observations have involved defacement of the observer's chart. If it is preferred to show the amendments on a tracing of the largest scale chart (rather than the chart itself) these should be in red as above, but adequate detail from the chart must be traced in black ink to enable the amendments to be fitted correctly.

Electronic Navigational Charts (ENCs): A screen dump of the largest scale usage band ENC with the alterations and additions being shown thereon in red.

5. When soundings are obtained, *The Mariners Handbook* (NP 100) should be consulted. The echo sounding trace should be marked with times, depths, etc., and forwarded with the report. It is important to state whether the echo sounder is set to register depths below the surface, or below the keel; in the latter case the vessel's draught should be given. Time and date should be given in order that corrections for the height of the tide may be made where necessary. The make, name, and type of echo sounder set should also be given.
6. Modern echo sounders frequently record greater depths than the set's nominal range, e.g. with a set whose maximum is 500m a trace appearing at 50m may in fact be 550m or even 1,050m. Erroneous deep soundings beyond the sets nominal range can usually be recognised by the following:
 - (a) The trace being weaker than normal for the depth registered
 - (b) The trace appearing to pass through the transmission line
 - (c) The "feathery" nature of the trace.
7. Reports which cannot be confirmed or are lacking in certain details should not be withheld. Shortcomings should be stressed and any firm expectation of being able to check the information on a succeeding voyage should be mentioned.
8. Reports of shoal soundings, uncharted dangers and navigational aids out of order should, at the mariner's discretion, also be made by radio to the nearest coast radio station. The draught of modern tankers is such that any uncharted depth under 30 metres or 15 fathoms may be of sufficient importance to justify a radio message.