

NEW ZEALAND NOTICES TO MARINERS

Notices NZ 55 - 59

Published fortnightly by the New Zealand Hydrographic Authority

© Crown Copyright 2024. All rights reserved. Permission is not required to make analogue copies of these Notices but such copies are not to be sold.

CONTENTS

- I [Explanatory Notes.](#)
 - II [Miscellaneous Notices.](#)
 - III [General Notices.](#)
 - IV [Notices to Mariners.](#)
 - V [Corrections to New Zealand Publications.](#)
 - VI [Corrections to Admiralty Publications.](#)
 - VII [Navigational Warnings.](#)
-

New Zealand Notices to Mariners are the authority for correcting New Zealand nautical publications and those charts within New Zealand's area of charting responsibility as shown in [Annual Notice No. 1](#).

Mariners are requested to immediately inform the New Zealand Hydrographic Authority, Toitū Te Whenua Land Information New Zealand, 155 The Terrace, PO Box 5501, Wellington 6145, New Zealand, Phone: 0800 665 463 or +64 (0)4 460 0110, Fax: +64 (0)4 460 0161, email: ntm@linz.govt.nz, of the discovery of new or suspected dangers to navigation, or shortcomings in charts and publications. A copy of a Hydrographic Note, a convenient form on which to send such information, is included at the end of Section VII of the Fortnightly Notices to Mariners.

Changes or defects in aids to navigation should be reported to the Rescue Coordination Centre New Zealand (RCCNZ) via the nearest New Zealand Coastal Maritime Radio Station Phone: +64 (0)4 577 8030, Fax: +64 (0)4 577 8038 or +64 (0)4 577 8041, email: rccnz@maritimenz.govt.nz.

Copies of these Notices can be obtained from Toitū Te Whenua Land Information New Zealand, Maritime New Zealand, Principal Chart Agents at the major ports of New Zealand and the internet: www.linz.govt.nz.

EXPLANATORY NOTES

This edition of Notices to Mariners includes all significant information affecting New Zealand nautical charts and publications which the New Zealand Hydrographic Authority (NZHA) has become aware of since the last edition. All reasonable efforts have been made to ensure the accuracy and completeness of the information, including third party information, on which these updates are based. The NZHA regards third parties from which it receives information as reliable, however the NZHA cannot verify all such information and errors may therefore exist. The NZHA does not accept liability for errors in third party information.

Correction of Charts and Publications by the User. New Zealand Notices to Mariners contain important information and should be used to keep the specified charts and publications up to date.

Charts. The notices in Section IV give instructions for the correction of charts.

Geographical positions refer to the largest scale chart unless otherwise stated. They are normally given in degrees, minutes and decimals of a minute, but may occasionally quote seconds for convenience when plotting from the graduation of some older-style charts.

Bearings are true, reckoned clockwise from 000° to 359°; those relating to lights are given as seen by an observer from seaward.

Alterations to depth contours, deletion of depths to make way for new detail, etc. are not mentioned unless they have some navigational significance.

Blocks, notes or tracings accompanying notices in Section IV are placed at the end of this publication.

Permanent Notices. A [Cumulative List](#) of permanent corrections affecting charts is published on the Toitū Te Whenua LINZ website.

Temporary and Preliminary Notices. These are indicated by (T) or (P) respectively after the notice number. Charts are not corrected for them before issue; they should be corrected in pencil on receipt.

An asterisk (*) in a re-issued notice indicates a new or revised entry.

A list of [\(T\) and \(P\) Notices in force](#) is published on the Toitū Te Whenua LINZ website.

Local Notices to Mariners. In addition to Toitū Te Whenua LINZ issued Notices to Mariners, harbourmasters and regional councils may promulgate local Notices to Mariners. Mariners are advised to refer to such notices. For mariners operating in the Auckland Region please see <https://at.govt.nz/boating-marine/local-notices-to-mariners/>.

New Zealand Publications. Corrections to New Zealand Publications are given in Section V.

Light Lists. The detailed correction to the Light List is given in Section V and may not be published in the same edition as the chart correcting notice. The entire entry for each light is printed, and an asterisk (*) is shown under the column which contains an amendment. In the case of a new light, an asterisk (*) appears under all the columns. New and extensively altered entries are intended to be pasted in. It is recommended that a manuscript entry be made for all shorter corrections.

It is emphasised that the [List of Lights](#) is the authority for lights and that many alterations, especially those of a temporary but operational nature, may be promulgated only as corrections to the List of Lights.

THE USE OF CHARTS AND ASSOCIATED PUBLICATIONS

Reliance on Charts and Associated Publications. While every effort is made to ensure the accuracy of the information on New Zealand charts and other publications, it should be appreciated that it may not always be complete and up to date. The mariner must be the final judge of the reliance to be placed on the information given, bearing in mind their particular circumstances, local pilotage guidance and the judicious use of available navigational aids.

Charts. Charts should be used with prudence: there are areas where the source data are old, incomplete or of poor quality. The mariner should use the largest scale appropriate for their particular purpose; apart from being the most detailed, the larger scales are usually corrected first. When extensive new information (such as a new hydrographic survey) is received, some months may elapse before it can be fully incorporated in published charts. On small scale charts of ocean areas where hydrographic information is, in many cases, still sparse, charted shoals may be in error as regards position, least depth and extent. Undiscovered dangers may exist, particularly away from well-established routes.

Symbols. Details on symbols and abbreviations used on charts are those shown in publication NP5011 (INT 1) Symbols and Abbreviations Used on ADMIRALTY Paper Charts, published by the United Kingdom Hydrographic Office.

Further guidance. The Mariner's Handbook (NP100) gives a fuller explanation of the limitations of charts. All users should study it in their own interest.

MISCELLANEOUS NOTICES

Index of Product Announcements

Chart No.
NZ 56
NZ 561
NZ 5612
Publication
Nil

NEW ZEALAND CHARTS. New Editions, Withdrawn Charts

New Editions Published

<i>Number</i>	<i>Title and other remarks</i>	<i>Scale 1:</i>	<i>Published</i>	<i>Notices to Mariners in Force</i>
NZ 56	Kahutara Point to Blackhead Point	200 000	July 2024	Nil
	<i>New edition incorporating new survey information and general updating throughout.</i>			
NZ 561	Approaches To Napier	75 000	July 2024	Nil
	<i>New edition incorporating new survey information and general updating throughout.</i>			
NZ 5612	Napier Roads	25 000	July 2024	NZ 51(T)/22
	<i>New edition incorporating new survey information and general updating throughout.</i>			
	Napier Harbour	7 500		

Chart(s) Permanently Withdrawn

<i>Number</i>	<i>Published</i>
NZ 56	February 2017
NZ 561	November 2022
NZ 5612	September 2022

Charts listed above as withdrawn no longer meet carriage requirements and should be marked as "superseded" and replaced with the new edition listed prior to passage through the area covered by the new chart.

New Zealand Hydrographic Authority
 HITS 5612/147

GENERAL NOTICES

ENC/ECDIS DATA PRESENTATION AND PERFORMANCE CHECK IN SHIPS

The International Maritime Organization (IMO) has recently indicated its concerns about operating anomalies identified in some ECDIS that fail to display important new chart features.

The International Hydrographic Organization (IHO) has produced an ENC Data Presentation and Performance Check dataset that allows mariners to check their ECDIS. The check dataset is available through ENC service providers and from the IHO website (www.iho.int) which includes instructions.

Mariners are strongly recommended to use the dataset and report the results of their checks to help the IHO identify how the different brands of ECDIS display and handle chart information. Mariners are asked to also inform the IMO, national Hydrographic Offices, ECDIS manufacturers and others, so that they can take any corrective action that may be necessary.

In order to present the most comprehensive report possible to the IMO and to further assist in resolving the issues so far identified, the IHO is keen that as many ships as possible forward their results. Reports on the results can be sent via a form provided with the data or the results can be submitted on-line through a web-form.

All relevant documentation can be downloaded free from the IHO website at: www.iho.int.

SOUTH PACIFIC OCEAN. MARITIME SAFETY BROADCASTS – OPTIMUM R/T FREQUENCIES WITHIN NAVAREA XIV

Diagrams showing the optimum R/T calling and working frequency bands and times for navigational warnings broadcast within 1000 nautical miles of Taupo Maritime Radio (ZLM) (38° 50'S., 176° 00'E. approx.) are available as follows:

https://downloads.sws.bom.gov.au/data/HF_Systems/Monthly_Predictions/9038/HAP9038Taupo_page_1.pdf
https://downloads.sws.bom.gov.au/data/HF_Systems/Monthly_Predictions/9038/LAMP9038NAVAREAXIV1.pdf

Australian Government IPS Radio and Space Services
HITS -/159

NOTICES TO MARINERS

Index of Charts Affected

Chart No.	Notices to Mariners
NZ 43	59
NZ 55	56, 58(P)
NZ 56	56
NZ 561	57(T)
NZ 4424	59
NZ 5571	58(P)
NZ 5612	57(T)
NZ 6612	55(P)
NZ 14600 (INT 600)	56

NZ 55(P)/24 NEW ZEALAND - South Island - East Coast - Otago Harbour. Aids to Navigation

1. Mariners are advised that the light characteristics of the lateral marks in Upper Harbour, Victoria Channel and Dunedin Wharves have been altered.
2. Mariners are advised to exercise caution when navigating in the area.
3. Charting action will take place in due course.

Chart affected: NZ 6612

NZ Light List: 4373.3 to 4375.1

Port Otago Limited
HITS 6612/351

IV

NZ 56/24 NEW ZEALAND - North Island - East Coast - Mahia Peninsula. Precautionary Area

1. Former notice - NZ 54(P)/24 is cancelled.

2. Chart NZ 55 [063/22]

Insert	the accompanying note, PRECAUTIONARY ROCKET LAUNCH AREA:	right of chart title
	limit of precautionary area, ---, joining:	(shoreline) 39°06'.16S., 177°59'.84E. 38°54'.00S., 178°18'.00E. 38°54'.00S., 178°42'.00E.
	legend, <i>Precautionary Rocket Launch Area (see Note)</i> , centred on:	(chart limit) 39°10'.00S., 178°42'.00E. 38°54'.20S., 178°25'.17E.

3. Chart NZ 14600 (INT 600) [NE Dec 23]

Insert	the accompanying block showing updates to the precautionary rocket launch area, centred on:	39°29'.10S., 178°00'.82E.
--------	---	---------------------------

Rocket Lab
 HITS 55/149

NZ 57(T)/24 NEW ZEALAND - North Island - East Coast - Napier Harbour. Aids to Navigation

1. Former notice - NZ 28(P)/24 is cancelled.
2. Cancel this notice on receipt.

Charts formerly affected: NZ 5612, NZ 561

NZ Light List: 3982.5, 3983.15

New Zealand Hydrographic Authority
 HITS 5612/147

NZ 58(P)/24 NEW ZEALAND - North Island - East Coast - Tūranganui-a-Kiwa / Poverty Bay to Te Anaopaieka Point. Obstruction and Rocks

1. A recent hydrographic survey (2022) in the vicinity of Gisborne, Tūranganui-a-Kiwa / Poverty Bay to Te Anaopaieka Point, has indicated changes to charted features. The most significant changes are as follows:

<i>Position</i>	<i>Depth</i>	<i>Feature</i>
(a) 38°43'.11S., 177°57'.41E	Unknown	Obstruction
(b) 38°42'.70S., 178°02'.81E	5.3	Underwater Rock
(c) 38°42'.58S., 178°03'.50E	4.0	Underwater Rock
(d) 38°42'.47S., 178°01'.99E	12.7	Underwater Rock
(e) 38°41'.96S., 178°01'.35E	14.9	Underwater Rock
(f) 38°35'.48S., 178°13'.21E	6.2	Underwater Rock

2. Mariners are advised to exercise caution when navigating in the area.

(continued)

**NZ 58(P)/24 NEW ZEALAND - North Island - East Coast - Tūranganui-a-Kiwa / Poverty Bay to Te Anaoipaika Point.
Obstruction and Rocks continued**

3. Charting action will take place in due course.

Charts affected: NZ 55, NZ 5571

New Zealand Hydrographic Authority
HITS 5571/49

NZ 59/24 NEW ZEALAND - North Island - West Coast - Taharoa Offshore Terminal. Aid to Navigation**1. Chart NZ 4424 [047/24]**

Delete ★L.Fl(2)20s36m12M 38°09'.94S., 174°42'.30E.

2. Chart NZ 43 [054/22]

Delete ★L.Fl(2)20s36m12M 38°09'.94S., 174°42'.30E.

NZ Light List: 4096

Taharoa Ironsands Limited
HITS 4424/17

V

CORRECTIONS TO NEW ZEALAND PUBLICATIONS

New Zealand Nautical Almanac 2024/25, NZ 204 Light List Information

4096	Remove from list						
4098	Prohibited Anchorage Area. N Limit. Lts in line 090°. Front	38 10.00 174 42.13	F R	4	3	White, red and white vertical stripes, beacon 3.9	Neon □ Rectangular beacon
		*		*		*	
4098.5	Prohibited Anchorage Area. N Limit. Rear	38 10.00 174 42.16	F R	7	3	White, red and white vertical stripes, beacon 3.9	Neon □ Rectangular beacon
		*		*		*	*
4373.3	No. 3	45 49.71 170 37.23	FI G 3s	3	1	Green △ Green pile beacon	
			*				
4373.4	No. 4	45 49.81 170 37.25	FI R 3s	3	1	Red □ Red pile beacon	
			*				
4373.44	No. 5	45 49.74 170 36.87	FI G 3s	3	1	Green △ Green pile beacon	
			*				
4373.6	No. 6	45 49.83 170 36.88	FI R 3s	3	1	Red □ Red pile beacon	
			*				
4373.7	No. 7	45 49.77 170 36.51	FI G 3s	3	1	Green △ Green pile beacon	
			*				
4373.8	No. 8	45 49.86 170 36.54	FI R 3s	3	1	Red □ Red pile beacon	
			*				
4373.9	No. 8A	45 49.90 170 36.32	FI R 3s	3	1	Red □ Red pile beacon	
			*				
4374	Kilgours Point. No. 9	45 49.88 170 36.15	FI G 3s	3	1	Green △ Green pile beacon	
			*				
4374.1	No. 11	45 50.00 170 35.82	FI G 3s	3	1	Green △ Green pile beacon	
			*				
4374.12	No. 12	45 50.06 170 35.87	FI R 3s	3	1	Red □ Red pile beacon	F R lights on radio masts 3.1 M SSW
			*				

(continued)

V

New Zealand Nautical Almanac 2024/25, NZ 204 Light List Information continued

4374.125	No. 13	45 50.04 170 35.72	FI G 3s	3	1	Green \triangle Green pile beacon	
							*
4374.13	No. 15	45 50.07 170 35.62	FI G 3s	3	1	Green \triangle Green pile beacon	
							*
4374.14	No. 16	45 50.14 170 35.66	FI R 3s	3	1	Red \square Red pile beacon	
							*
4374.16	No. 17	45 50.12 170 35.52	FI G 3s	3	1	Green \triangle Green pile beacon	
							*
4374.18	No. 18	45 50.20 170 35.54	FI R 3s	3	1	Red \square Red pile beacon	
							*
4374.2	No. 19	45 50.17 170 35.44	FI G 3s	3	1	Green \triangle Green pile beacon	
							*
4374.22	No. 20	45 50.29 170 35.45	FI R 3s	3	1	Red \square Red pile beacon	
							*
4374.24	No. 21	45 50.25 170 35.36	FI G 3s	3	1	Green \triangle Green pile beacon	
							*
4374.26	No. 22	45 50.40 170 35.37	FI R 3s	3	1	Red \square Red pile beacon	
							*
4374.28	No. 23	45 50.38 170 35.28	FI G 3s	3	1	Green \triangle Green pile beacon	
							*
4374.29	No. 24	45 50.49 170 35.32	FI R 3s	3	1	Red \square Red pile beacon	
							*
4374.3	No. 25	45 50.47 170 35.23	FI G 3s	3	1	Green \triangle Green pile beacon	
							*
4374.31	No. 26	45 50.67 170 35.24	FI R 3s	3	1	Red \square Red pile beacon	Double pile
							*
4374.32	No. 27	45 50.65 170 35.16	FI G 3s	3	1	Green \triangle Green pile beacon	Double pile
							*

(continued)

V

New Zealand Nautical Almanac 2024/25, NZ 204 Light List Information continued

4374.33	No. 28	45 50.83 170 35.15	FI R 3s	3	1	Red □ Red pile beacon	
							*
4374.34	No. 29	45 50.80 170 35.08	FI G 3s	3	1	Green △ Green pile beacon	
							*
4374.36	No. 30	45 51.01 170 35.03	FI R 3s	3	1	Red □ Red pile beacon	
							*
4374.38	No. 31	45 50.98 170 34.96	FI G 3s	3	1	Green △ Green pile beacon	
							*
4374.39	No. 32	45 51.16 170 34.91	FI R 3s	3	1	Red □ Red pile beacon	
							*
4374.395	No. 33	45 51.13 170 34.83	FI G 3s	3	1	Green △ Green pile beacon	
							*
4374.4	No. 34	45 51.28 170 34.81	FI R 3s	3	1	Red □ Red pile beacon	
							*
4374.42	No. 35	45 51.25 170 34.74	FI G 3s	3	1	Green △ Green pile beacon	
							*
4374.43	No. 36	45 51.41 170 34.70	FI R 3s	3	1	Red □ Red pile beacon	
							*
4374.44	No. 37	45 51.38 170 34.63	FI G 3s	3	1	Green △ Green pile beacon	
							*
4374.46	No. 38	45 51.53 170 34.59	FI R 3s	3	1	Red □ Red pile beacon	
							*
4374.47	No. 39	45 51.49 170 34.52	FI G 3s	3	1	Green △ Green pile beacon	
							*
4374.48	No. 40	45 51.70 170 34.43	FI R 3s	3	1	Red □ Red and white horizontal stripes, pile beacon	Marks telegraph cable
							*

(continued)

V

New Zealand Nautical Almanac 2024/25, NZ 204 Light List Information continued

4374.5	No. 41	45 51.66 170 34.34	FI G 3s	3	1	Green \triangle Green and white horizontal stripes, pile beacon	Marks telegraph cable
							*
4374.52	No. 42	45 51.85 170 34.21	FI R 3s	3	1	Red \square Red pile beacon	Double pile
							*
4374.54	No. 43	45 51.80 170 34.13	FI G 3s	3	1	Green \triangle Green pile beacon	Double pile
							*
4374.55	No. 44	45 51.95 170 33.99	FI R 3s	3	1	Red \square Red pile beacon	
							*
4374.56	No. 45	45 51.89 170 33.94	FI G 3s	3	1	Green \triangle Green pile beacon	
							*
4374.58	No. 46	45 52.03 170 33.78	FI R 3s	3	1	Red \square Red pile beacon	
							*
4374.6	No. 47	45 51.97 170 33.74	FI G 3s	3	1	Green \triangle Green pile beacon	
							*
4374.61	No. 48	45 52.08 170 33.63	FI R 3s	3	1	Red \square Red pile beacon	
							*
4374.615	No. 49	45 52.02 170 33.60	FI G 3s	3	1	Green \triangle Green pile beacon	
							*
4374.62	No. 50	45 52.11 170 33.50	FI R 3s	3	1	Red \square Red pile beacon	
							*
4374.64	No. 51	45 52.06 170 33.45	FI G 3s	3	1	Green \triangle Green pile beacon	
							*
4374.65	No. 52	45 52.16 170 33.33	FI R 3s	3	1	Red \square Red pile beacon	
							*
4374.655	No. 53	45 52.11 170 33.29	FI G 3s	3	1	Green \triangle Green pile beacon	
							*

(continued)

V

New Zealand Nautical Almanac 2024/25, NZ 204 Light List Information continued

4374.66	No. 54	45 52.21 170 33.12	FI R 3s	3	1	Red □ Red pile beacon	
							*
4374.68	No. 55	45 52.16 170 33.07	FI G 3s	3	1	Green △ Green pile beacon	Double pile
							*
4374.7	No. 56	45 52.26 170 32.88	FI R 3s	3	1	Red □ Red pile beacon	
							*
4374.72	No. 57	45 52.19 170 32.84	FI G 3s	3	1	Green △ Green pile beacon	
							*
4374.74	No. 58	45 52.35 170 32.43	FI R 3s	3	1	Red □ Red pile beacon	
							*
4374.76	No. 59	45 52.29 170 32.41	FI G 3s	3	1	Green △ Green pile beacon	
							*
4374.77	No. 60	45 52.40 170 32.21	FI R 3s	3	1	Red □ Red pile beacon	
							*
4374.78	No. 61	45 52.35 170 32.19	FI G 3s	3	1	Green △ Green pile beacon	
							*
4374.8	No. 62	45 52.45 170 31.98	FI R 3s	3	1	Red □ Red pile beacon	
							*
4374.82	No. 63	45 52.40 170 31.96	FI G 3s	3	1	Green △ Green pile beacon	
							*
4374.83	No. 64	45 52.50 170 31.76	FI R 3s	3	1	Red □ Red pile beacon	
							*
4374.84	No. 66	45 52.54 170 31.58	FI R 3s	3	1	Red □ Red pile beacon	
							*
4374.86	No. 67	45 52.47 170 31.65	FI G 3s	3	1	Green △ Green pile beacon	
							*

(continued)

V

New Zealand Nautical Almanac 2024/25, NZ 204 Light List Information continued

4374.88	No. 68	45 52.58 170 31.41	FI R 3s	3	1	Red □ Red pile beacon	
							*
4374.98	No. 70	45 52.61 170 31.27	FI R 3s	3	1	Red □ Red pile beacon	Temporarily removed.
							*
4375	No. 72	45 52.65 170 31.15	FI R 3s	3	1	Red □ Red pile beacon	
							*
4375.02	No. 74	45 52.74 170 30.97	FI R 3s	3	1	Red □ Red pile beacon	
							*
4375.1	No. 76	45 52.85 170 30.76	FI R 3s	3	1	Red □ Red pile beacon	
							*
4543	Point Weeding	43 56.60 176 34.31	FI W 5s	60	7	Metal pile beacon 3	<i>fl 0.5, ec 4.5</i> Lights also shown at Point Hanson Jetty 0.55M E. Column
							*

(HITS 2685/12, HITS 4424/16, HITS 6612/351, HITS 4424/17)

VI

CORRECTIONS TO ADMIRALTY PUBLICATIONS

The New Zealand Hydrographic Authority no longer publishes corrections to Admiralty Publications as part of the fortnightly New Zealand Notice to Mariners Edition. For information regarding these publications please refer to:
<https://www.admiralty.co.uk/publications>.

VII

NAVIGATIONAL WARNINGS

The New Zealand Hydrographic Authority no longer publishes navigational warnings for NAVAREA XIV and NZ Coastal Area Z as part of the fortnightly New Zealand Notice to Mariners Edition.

New Zealand navigational warnings are available at: <https://www.maritimenz.govt.nz/commercial/safety/maritime-radio/navigational-warnings.asp>.

Australian navigational warnings are available at: <https://www.amsa.gov.au/safety-navigation/navigation-systems/maritime-safety-information-database>.

As these lists may not be up to date it is not an authoritative source of navigational warnings so Masters/Captains are still required to receive navigational warnings from the appropriate International Maritime Organization (IMO) or World Meteorological Organization (WMO) approved Global Maritime Distress and Safety System (GMDSS) broadcast service i.e. the International SafetyNET system.

HYDROGRAPHIC NOTE

(For instructions, see next page)

New Zealand Hydrographic Authority
Toitū Te Whenua Land Information New Zealand
Radio New Zealand House
155 The Terrace
PO Box 5501
Wellington 6145
New Zealand

Tel: 0800 665 463 or +64 (0)4 460 0110
Email: ntm@linz.govt.nz

Date Ref. No.

Name and address of ship or sender

.....
.....

Tel/Email of sender

General locality

Subject

Position. Lat. Long.

Position fixing system used

Datum

Paper Chart/ENC affected Edition

Dated

Latest Notice to Mariners held

Publications affected (Edition No. and date of latest supplement, page no., ID no. etc).....

Details:

A replacement copy of Chart No.
is required (see Instruction 4).

Signature of observer/reporter

HYDROGRAPHIC NOTE

Forwarding Information for Charts and Hydrographic Publications

Note: An acknowledgement of receipt will be sent and the information then used to the best advantage, which may mean immediate action or inclusion in a revision in due course. When a Notices to Mariners is issued, the sender's ship or name is quoted as authority unless (as sometimes happens) the information is also received in a foreign Notices to Mariners. An explanation of the use of contributions from all parts of the world would be too greater task and a further communication should only be expected when the information is of outstanding value or has unusual features.

INSTRUCTIONS:

1. Mariners are requested to notify New Zealand Hydrographic Authority, Toitū Te Whenua Land Information New Zealand, 155 The Terrace, PO Box 5501, Wellington 6145, New Zealand, when new or suspected dangers to navigation are discovered, changes observed in aids to navigation, or corrections to publications seem to be necessary. The *Admiralty* publication, *The Mariner's Handbook* (NP100), Chapter 4, gives general instructions.
2. This form and its instructions have been designed to help both the sender and the recipient. It should be used, or followed, closely, whenever appropriate. Copies of this form may be obtained gratis from the New Zealand Hydrographic Authority at the address above, or in PDF format directly from the Toitū Te Whenua LINZ website, www.linz.govt.nz/products-services/maritime-safety.
3. When a position is defined by sextant angles or bearings (true or magnetic being specified) more than two should be used in order to provide a check. Distances observed by radar should be quoted. However, when there is a series of fixes along a ship's course, only the method of fixing and the objects used need to be indicated. Latitude and longitude should only be used specifically to position the details when they have been fixed by astronomical observations or GPS and a full description of the method, equipment and datum used should be given.
4. Paper Charts: A cutting from the largest scale paper chart is the best medium for forwarding details, the alterations and additions being shown thereon in red. When requested, a new copy will be sent in replacement of a chart that has been used to forward information, or when extensive observations have involved defacement of the observer's chart. If it is preferred to show the amendments on a tracing of the largest scale chart (rather than the chart itself) these should be in red as above, but adequate detail from the chart must be traced in black ink to enable the amendments to be fitted correctly.
Electronic Navigational Charts (ENCs): A screen dump of the largest scale usage band ENC with the alterations and additions being shown thereon in red.
5. When soundings are obtained, *The Mariners Handbook* (NP100) should be consulted. The echo sounding trace should be marked with times, depths, etc., and forwarded with the report. It is important to state whether the echo sounder is set to register depths below the surface, or below the keel; in the latter case the vessel's draught should be given. Time and date should be given in order that corrections for the height of the tide may be made where necessary. The make, name, and type of echo sounder set should also be given.
6. Modern echo sounders frequently record greater depths than the set's nominal range, e.g. with a set whose maximum is 500m a trace appearing at 50m may in fact be 550m or even 1,050m. Erroneous deep soundings beyond the sets nominal range can usually be recognised by the following:
 - (a) The trace being weaker than normal for the depth registered
 - (b) The trace appearing to pass through the transmission line
 - (c) The "feathery" nature of the trace.
7. Reports which cannot be confirmed or are lacking in certain details should not be withheld. Shortcomings should be stressed and any firm expectation of being able to check the information on a succeeding voyage should be mentioned.
8. Reports of shoal soundings, uncharted dangers and navigational aids out of order should, at the mariner's discretion, also be made by radio to the nearest coast radio station. The draught of modern tankers is such that any uncharted depth under 30 metres or 15 fathoms may be of sufficient importance to justify a radio message.

To accompany New Zealand Notices to Mariners No. 56/24

NZ 55

PRECAUTIONARY ROCKET LAUNCH AREA
Temporary Launch Hazard Areas with boundaries marked by virtual aids to navigation shall be established within the Precautionary Rocket Launch Area for the purpose of public safety during rocket launch operations from Mahia Peninsula. For further information refer to Annual New Zealand Notices to Mariners No.19, Maritime Safety Information broadcasts or local automated information broadcast on VHF Channel 79.

Image Size (mm) 32.3 x 54.5

To accompany New Zealand Notices to Mariners No. 56/24

NZ 14600 (INT 600)

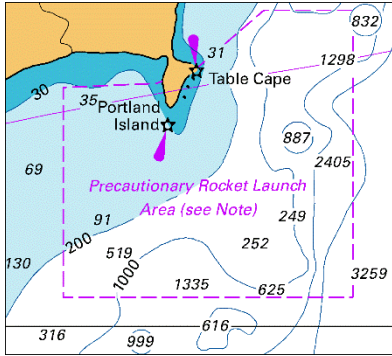


Image Size (mm) 46.6 x 51.5