

IV

**NZ 82/24 NEW ZEALAND - North Island - South Coast - Approaches to Wellington Harbour. Pilot Boarding Areas**

**1. Chart NZ 463 [ 040/23 ]**

Insert the accompanying block showing updates to pilot boarding points, centred on: 41°24'.10S., 174°49'.45E.

**2. Chart NZ 4633 [ 040/23 ]**

Insert the accompanying block showing updates to pilot boarding points, centred on: 41°23'.78S., 174°49'.18E.

Replace chart note, **PILOT BOARDING AREAS**, with the accompanying chart note, **PILOT BOARDING AREAS** below chart title

Delete  (a) 41°19'.56S., 174°51'.16E.

circular limit of pilot boarding area, radius 260m, - - -, centred on: (a) above

legend, *Pilot Boarding Area 'Delta (D)'* (see Note) close (a) above

**3. Chart NZ 4634 (plan, Entrance to Wellington Harbour) [ 034/22 ]**

Delete  (a) 41°19'.56S., 174°51'.16E.

circular limit of pilot boarding area, radius 260m, - - -, centred on: (a) above

legend, *Pilot Boarding Area 'Delta (D)'* (see Note) close (a) above

chart note, **PILOT BOARDING AREA** below chart plan title

Wellington Regional Council  
 HITS 4634/259

To accompany New Zealand Notices to Mariners No. 82/24

NZ 463

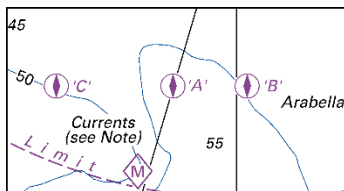


Image Size (mm) 24.52 x 45.16

To accompany New Zealand Notices to Mariners No. 82/24

NZ 4633

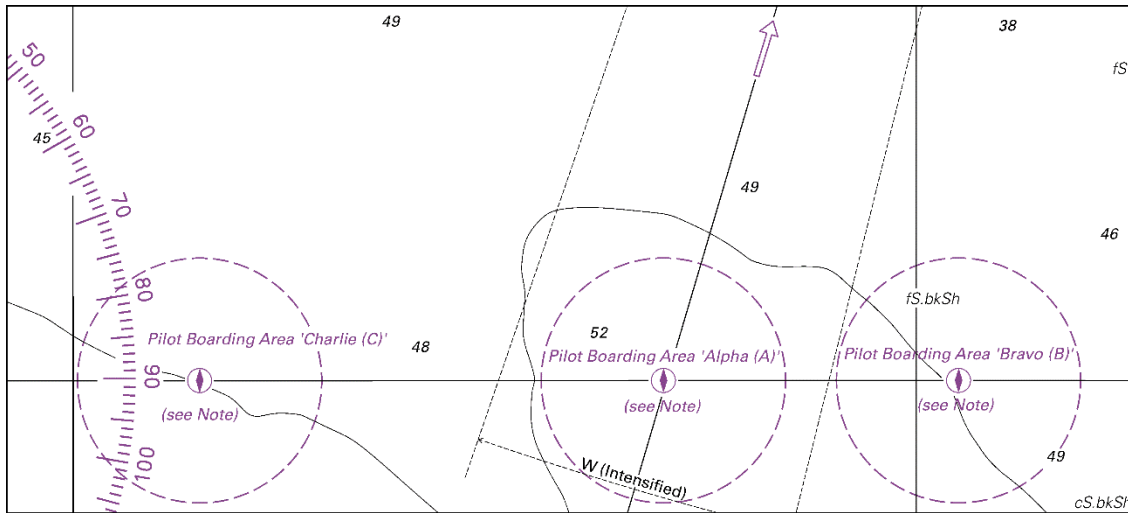


Image Size (mm) 67.20 x 149.75

To accompany New Zealand Notices to Mariners No. 82/24

NZ 4633

**PILOT BOARDING AREAS**  
Vessels entering Wellington Harbour will be directed by radio to pilot boarding areas Alpha (A), Bravo (B) or Charlie (C).

Image Size (mm) 14.00 x 52.00