

IV

NZ 20/26 NEW ZEALAND - South Island - North Coast - Tasman Bay / Te Tai-o-Aorere. Marine Farms and Aids to Navigation.
1. Chart NZ 61 [NE Sept 25]

Insert the accompanying block showing updates to Tasman Bay / Te Tai-o-Aorere marine farms centred on: 40°44'.07S., 172°54'.35E.

Delete  41°01'.55S., 173°04'.92E.

2. Chart NZ 6144 [NE Aug 25]

Insert the accompanying block showing updates to Tasman Bay / Te Tai-o-Aorere marine farms centred on: 40°45'.90S., 172°53'.29E.



41°03'.32S., 173°07'.21E.

Delete limit of marine farm, — — — —, joining: 40°59'.99S., 173°04'.08E.

41°01'.46S., 173°04'.48E.

41°02'.94S., 173°05'.28E.

41°03'.19S., 173°06'.82E.

41°01'.68S., 173°05'.93E.

41°00'.29S., 173°05'.54E.



(See Note)

41°02'.30S., 173°05'.50E.

Tasman District Council
HITS 614/167, HITS 614/170, HITS 614/174

To accompany New Zealand Notice to Mariners No. 20/26

NZ61

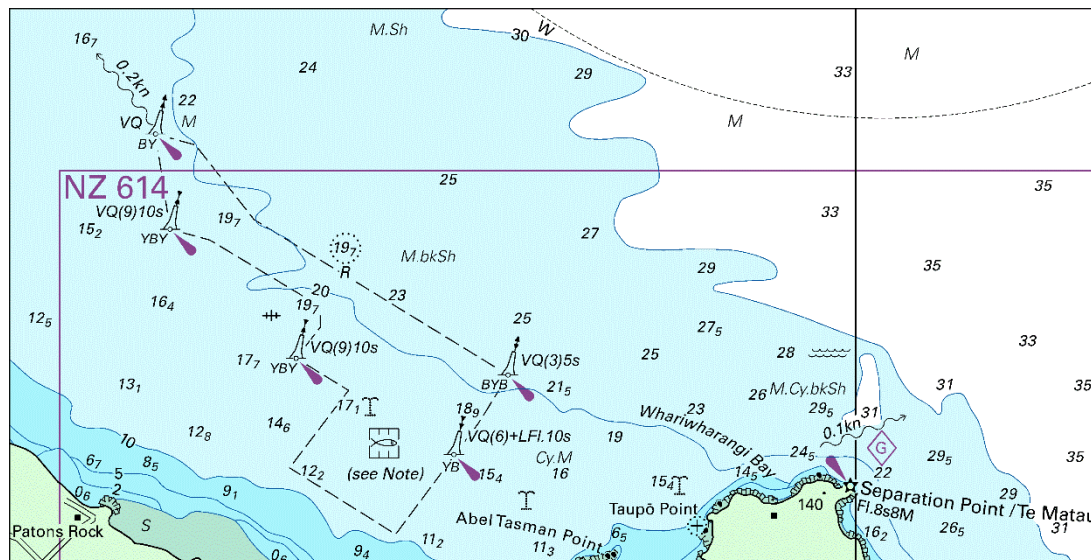


Image Size (mm) 73.7mm x 144.6mm

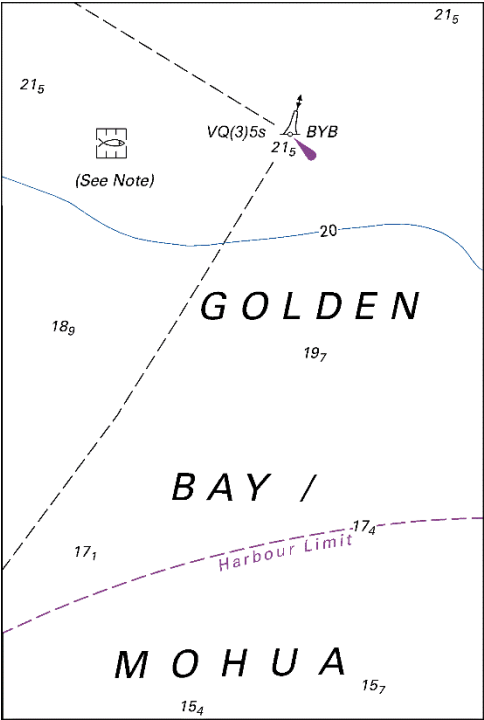


Image Size (mm) 94.8mm x 63.9mm